

MIDWEST SURVEYS
 LOGGING - PERFORATING - CONSOLIDATING SERVICES
 P.O. Box 68, Osawatomie, KS 66064
 913 / 755 - 2128

GAMMA RAY / NEUTRON / CCL

File No. _____

Company **Vast Petroleum Corporation**
 Well **Thohoff No. V-11**
 Field **Iola**
 County **Allen** State **Kansas**

Location **825' FSL & 3125' FEL**
SW-NE-SE-SW

Sec. 5 Type 24S Rga 19e Elevation
 Permanent Datum GL GL K.B. NA
 Log Measured From GL GL D.F. NA
 Drilling Measured From GL GL G.L. NA

Date 05-13-2014

Run Number One
 Depth Driller 1135.0
 Bottom Logged Interval 1092.0
 Top Log Interval 200.0
 Fluid Level Full

Type Fluid Water
 Density / Viscosity NA
 Salinity - PPM Cl NA
 Max. Recorded Temp NA
 Estimated Cement Top 0.0
 Equipment No. Location 107 Osawatomie
 Recorded By Steve Windisch
 Missused By Trent Christensen

BORE-HOLE RECORD

RUN No.	BIT	FROM	TO	SIZE	WGT.	FROM	TO
One	12.75"	0.0	22.0	8.625"	22.0 #	0.0	22.0
Two	6.75"	22.0	1135.0	4.50"	10.5 #	0.0	1127.0
				Ballie	Set	At	1095.0

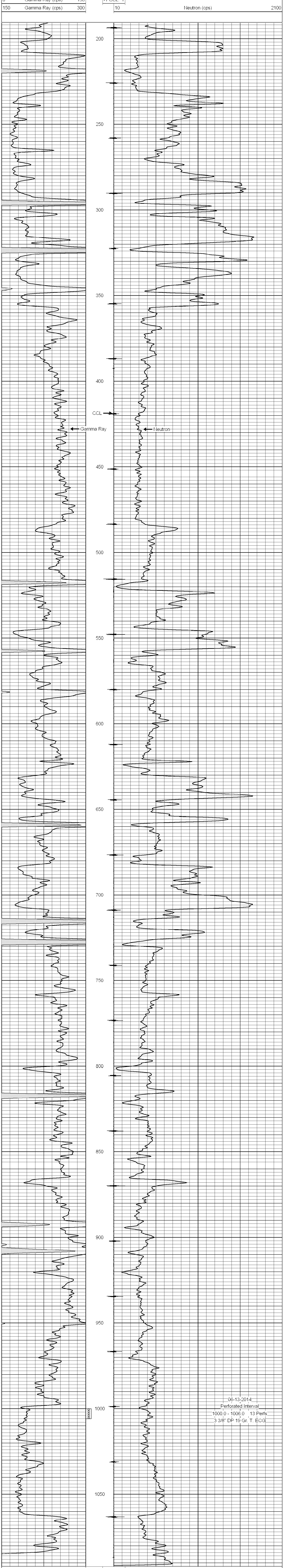
<<< Fold Here >>>

All interpretations are opinions based on inferences from electrical or other measurements and we cannot and do not guarantee the accuracy or correctness of any interpretation, and we shall not, except in the case of gross or willful negligence on our part, be liable or responsible for any loss, costs, damages, or expenses incurred or sustained by anyone resulting from any interpretation made by any of our officers, agents or employees. These interpretations are also subject to our general terms and conditions set out in our current Price Schedule.

Comments

Drilling Contractor :
 Hat Drilling, LLC

Database File: thohoff 11v.db
 Dataset Pathname: pass1
 Presentation Format: gr-n-ccl
 Dataset Creation: Fri Jun 13 11:55:46 2014 by Log SCH 111116
 Charted by:



0 Gamma Ray (cps) 150
 150 Gamma Ray (cps) 300
 -1 CCL 1
 10 Neutron (cps) 2100