



**MIDWEST SURVEYS**  
 LOGGING - PERFORATING - CONSULTING SERVICES  
 P.O. Box 68, Osawatomie, KS 66064  
 913 / 755 - 2128

**GAMMA RAY / NEUTRON / CCL**

File No. \_\_\_\_\_

Company **Altavista Energy, Inc.**

Well **Marjorie Crofts No. - 26**

Field **Neosho Falls - Leroy**

County **Coffey** State **Kansas**

Location **3795 FSL & 4785 FEL**

**NE-NW-SW-NW**

Other Services **Perforate**

Sec. 14 Twp. 22S Rge. 16E Elevation 1038'

Perforation Datum GL Log Measured From GL Drilling Measured From GL

Date 10-22-2014

Run Number One

Depth Driller 1122.0

Bottom Logger 1058.2

Top Log Interval 20.0

Bottom Log Interval 20.0

Fluid Level Full

Type Fluid Water

Density / Viscosity NA

Salinity / PPM Cl NA

Max. Recorded Temp NA

Estimated Cement Top 0.0

Equipment No. 107

Recorded By Steve Windisch

Checked By Doug Evans

BOREHOLE RECORD				CASING RECORD			
Run	BIT	FROM	TO	SIZE	WT	FROM	TO
One	12.25"	0.0	42.9	7.00"	19.0#	0.0	42.9
Two	5.875"	42.9	1122.0	2.875"	6.5#	0.0	1095.83
				Ballie	Set	At	1084.83

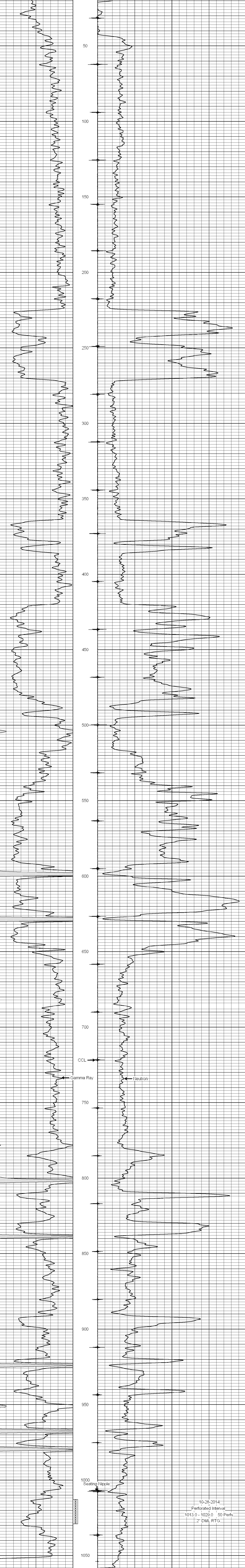
<<< Fold Here >>>

All interpretations are opinions based on inferences from electrical or other measurements and we cannot and do not guarantee the accuracy or correctness of any interpretation, and we shall not, except in the case of gross or willful negligence on our part, be liable or responsible for any loss, costs, damages, or expenses incurred or sustained by anyone resulting from any interpretation made by any of our officers, agents or employees. These interpretations are also subject to our general terms and conditions set out in our current Price Schedule.

Comments

Drilling Contractor :  
**Finney Drilling Company**

Database File: m crofts 26.db  
 Dataset Pathname: pass1  
 Presentation Format: gr-n-ccl  
 Dataset Creation: Wed Oct 22 14:50:55 2014 by Log SCH 111116  
 Charted by: Depth in Feet scaled 1:240



10-28-2014  
 Perforated Interval  
 1013.0 - 1029.0 50 Perfs  
 2" DML RTG