



**COMPLETION
& PRODUCTION
SERVICES CO.**

**MICRO
LOG**

Company LD DRILLING, INC.
Well ANITA 1-12
Field WILDCAT
County GOVE State KANSAS

Company LD DRILLING, INC.
Well ANITA 1-12
Field WILDCAT
County GOVE
State KANSAS

Location: API #: 15-063-22215-00-00
2970 FSL & 1060 FWL
E2 - SE - SW - NW
SEC 12 TWP 13S RGE 29W
GROUND LEVEL Elevation 2688
Log Measured From KELLY BUSHING 7' A.G.L.
Drilling Measured From KELLY BUSHING
Other Services
CNL/CDL
DIL
Elevation
K.B. 2695
D.F. 2693
G.L. 2688

| | | | |
|------------------------------|--------------|-------------------|--|
| Date | 9/15/14 | | |
| Run Number | TWO | | |
| Depth Driller | 4530 | | |
| Depth Logger | 4528 | | |
| Bottom Logged Interval | 4526 | | |
| Top Log Interval | 3700 | | |
| Casing Driller | 8 5/8 @ 369' | | |
| Casing Logger | 368' | | |
| Bit Size | 7.875 | | |
| Type Fluid in Hole | CHEMICAL MUD | | |
| Density / Viscosity | 9.3/57 | CHLORIDES 500 PPM | |
| pH / Fluid Loss | 10.0/8.8 | | |
| Source of Sample | FLOWLINE | | |
| Rm @ Meas. Temp | 1.10 @ 91F | | |
| Rmf @ Meas. Temp | 0.83 @ 91F | | |
| Rmc @ Meas. Temp | 1.32 @ 91F | | |
| Source of Rmf / Rmc | MEASURED | | |
| Rm @ BHT | 0.83 @ 121F | | |
| Time Circulation Stopped | 2 HOURS | | |
| Time Logger on Bottom | | | |
| Maximum Recorded Temperature | 121F | | |
| Equipment Number | 3802 | | |
| Location | HAYS, KS. | | |
| Recorded By | IAN MABB | | |
| Witnessed By | LARRY FRIEND | | |

<<< Fold Here >>>

All interpretations are opinions based on inferences from electrical or other measurements and we cannot and do not guarantee the accuracy or correctness of any interpretation, and we shall not, except in the case of gross or willful negligence on our part, be liable or responsible for any loss, costs, damages, or expenses incurred or sustained by anyone resulting from any interpretation made by any of our officers, agents or employees. These interpretations are also subject to our general terms and conditions set out in our current Price Schedule.

Comments

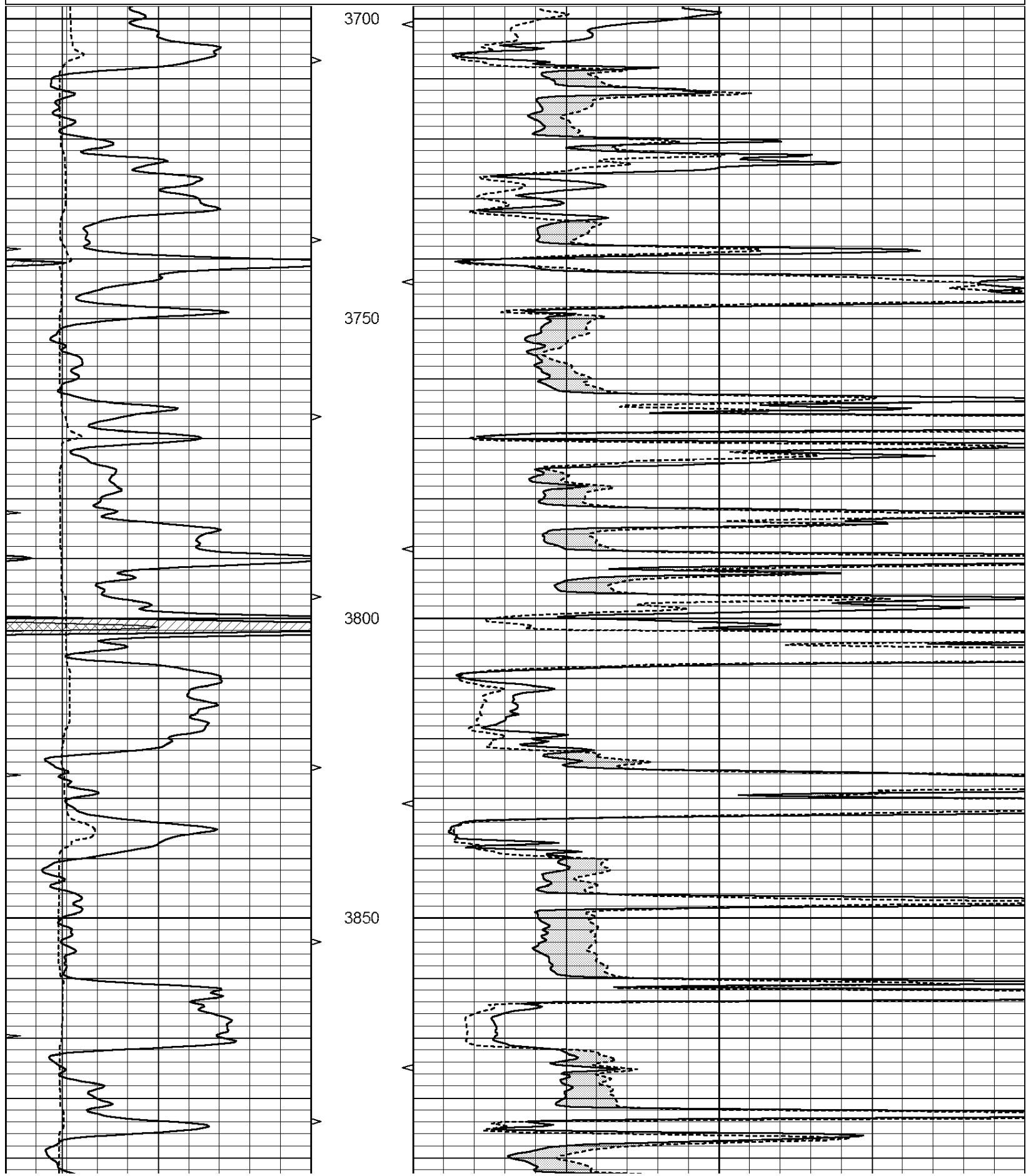
NABORS COMPLETION & PRODUCTION SERVICES CO.
785 (628 - 6395)
THANK YOU FOR YOUR BUSINESS
DIRECTIONS : GOVE, KS. - 1 MILE SOUTH THE RD R - WEST 1 MILE - SOUTH 1/2 MILE - EAST INTO

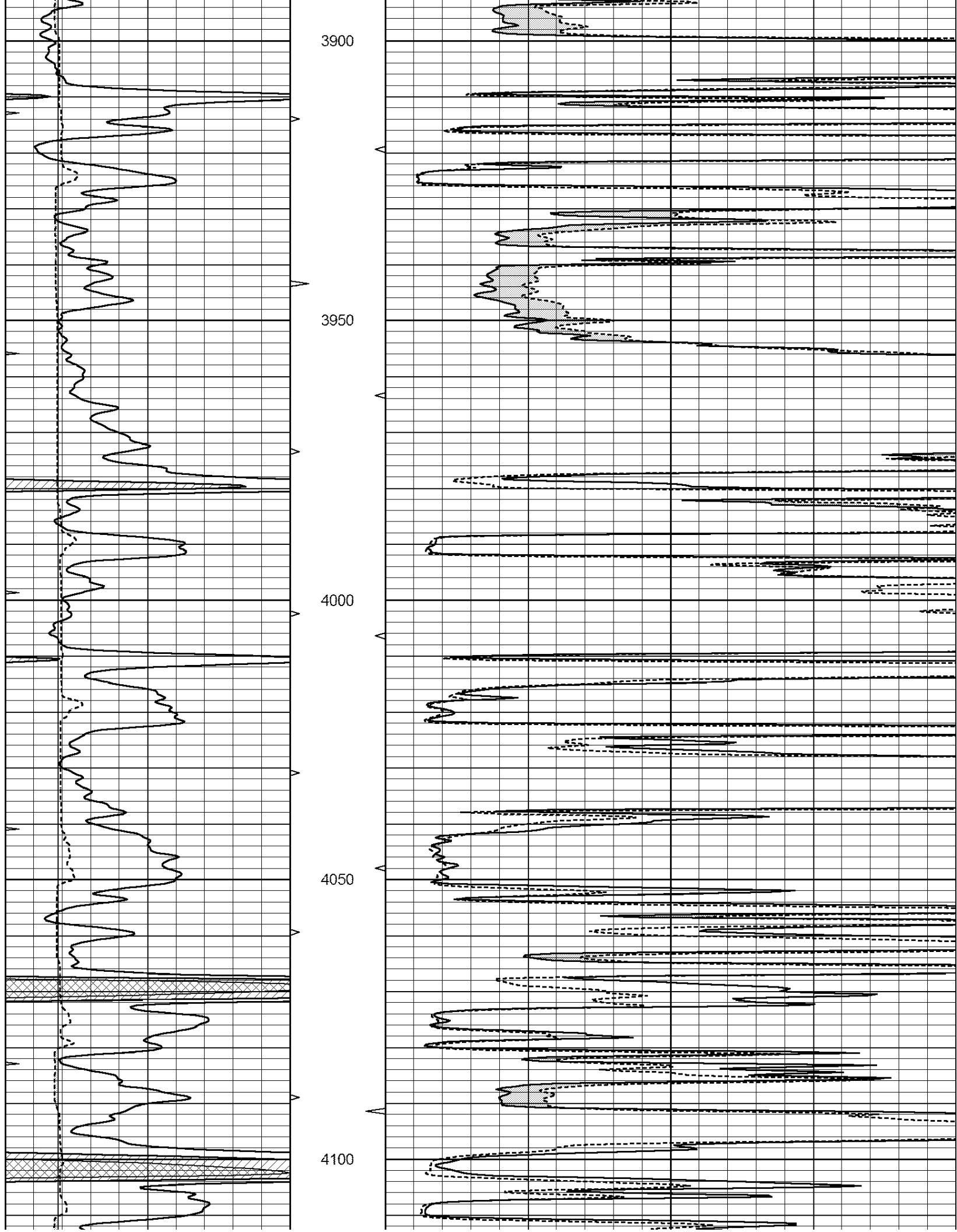
Charted by:

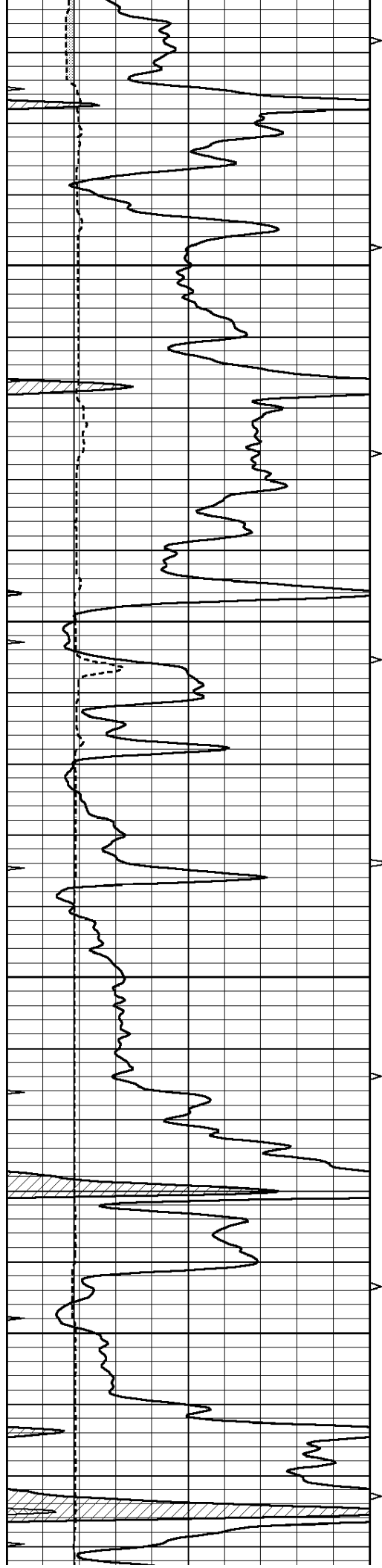
Depth in Feet scaled 1:240

| | | |
|---|------------------|-----|
| 0 | GAMMA RAY (GAPI) | 150 |
| 6 | MELCAL (in) | 16 |
| 0 | MINMK | 20 |

| | | |
|---|----------------|----|
| 0 | MEL1.5 (Ohm-m) | 40 |
| 0 | MEL2.0 (Ohm-m) | 40 |





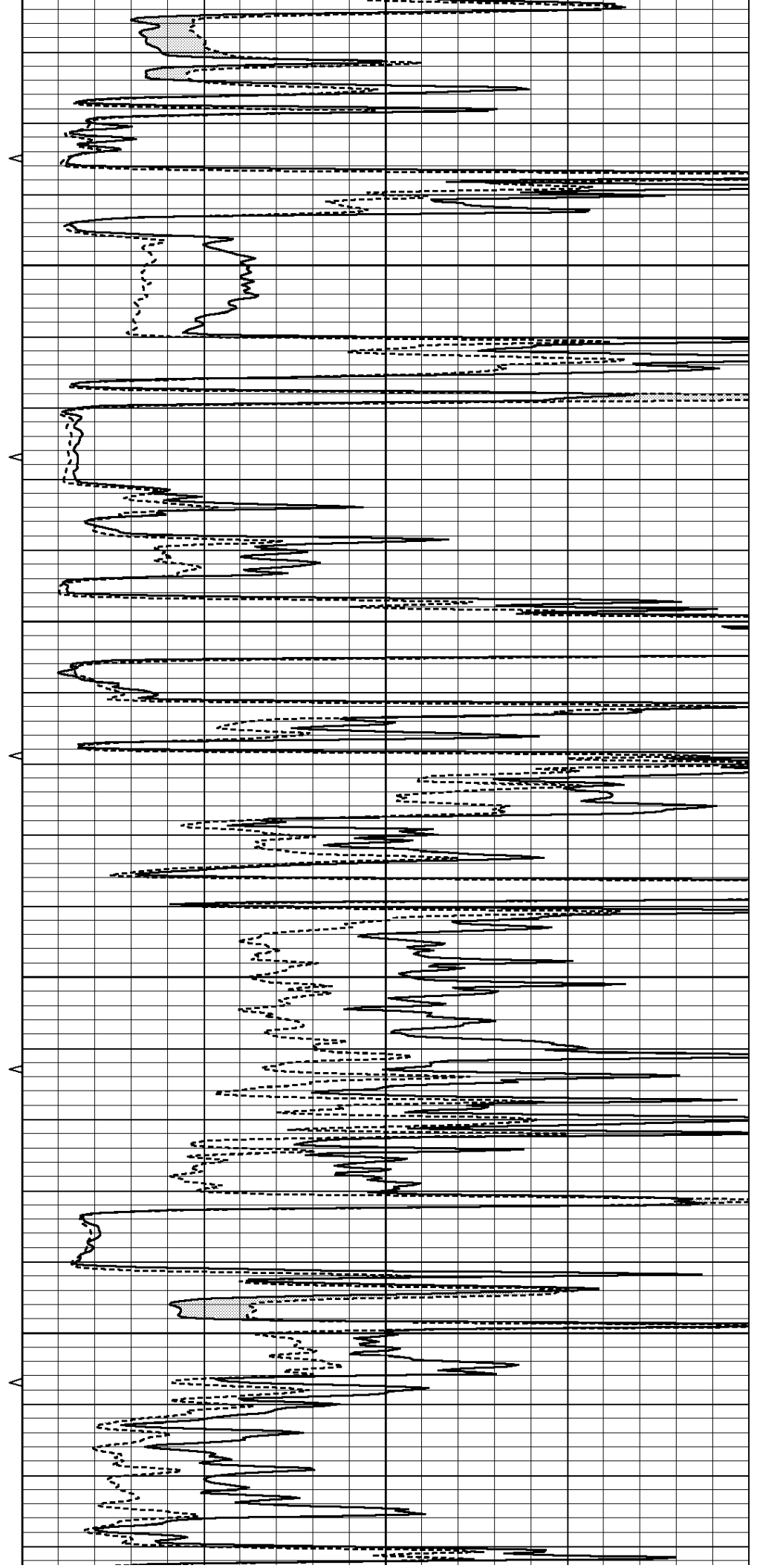


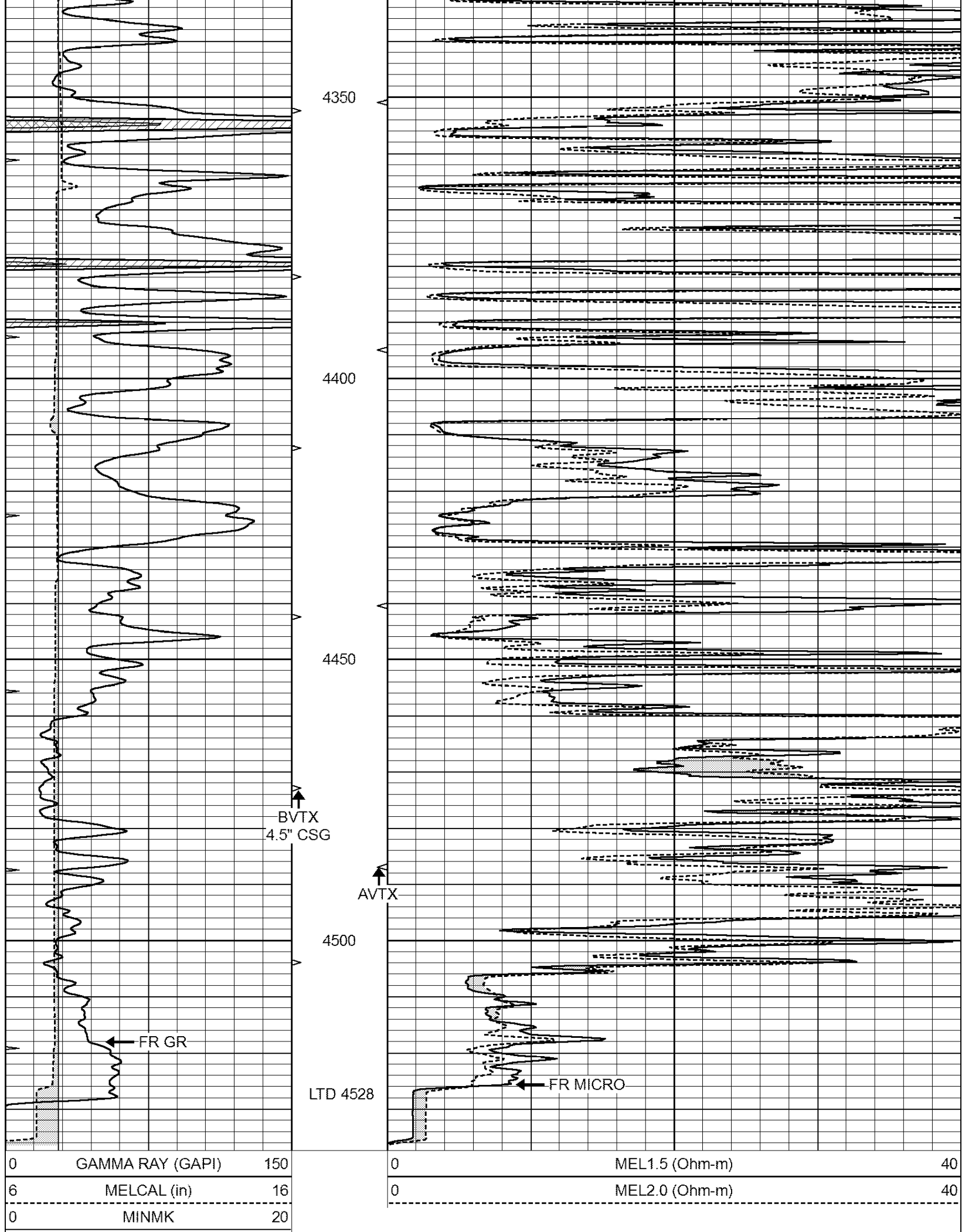
4150

4200

4250

4300





4350

4400

4450

4500

LTD 4528

BVTX
4.5\"/>

AVTX

FR GR

FR MICRO

| | | |
|---|------------------|-----|
| 0 | GAMMA RAY (GAPI) | 150 |
| 6 | MELCAL (in) | 16 |
| 0 | MINMK | 20 |

| | | |
|---|----------------|----|
| 0 | MEL1.5 (Ohm-m) | 40 |
| 0 | MEL2.0 (Ohm-m) | 40 |



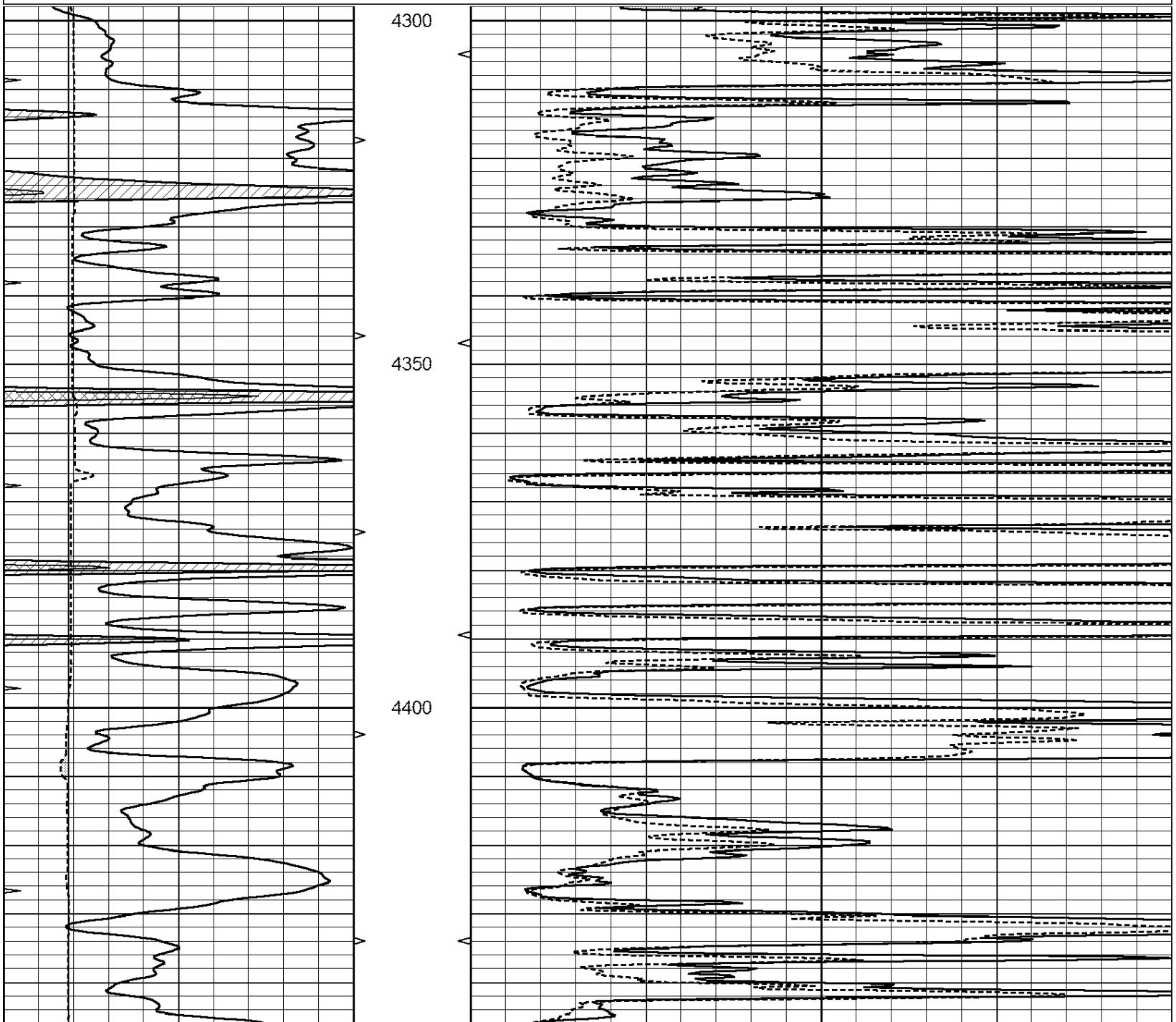
**COMPLETION
& PRODUCTION
SERVICES CO.**

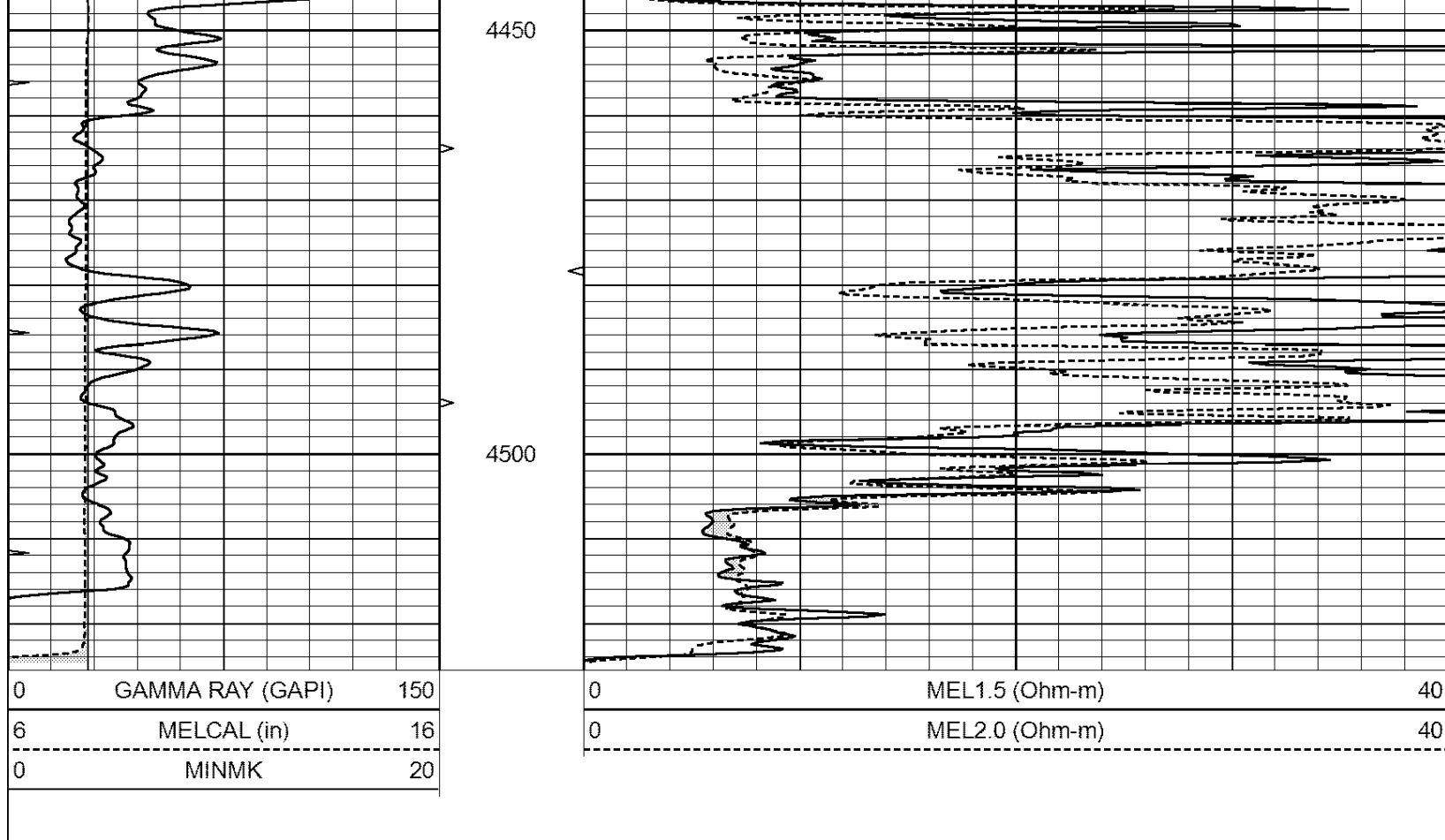
REPEAT SECTION

Database File: 25817ddn.db
Dataset Pathname: pass5.1
Presentation Format: _micro
Dataset Creation: Mon Sep 15 17:50:25 2014 by Calc Open-Cased 090629
Charted by: Depth in Feet scaled 1:240

| | | |
|---|------------------|-----|
| 0 | GAMMA RAY (GAPI) | 150 |
| 6 | MELCAL (in) | 16 |
| 0 | MINMK | 20 |

| | | |
|---|----------------|----|
| 0 | MEL1.5 (Ohm-m) | 40 |
| 0 | MEL2.0 (Ohm-m) | 40 |





Calibration Report

Database File: 25817ddn.db
 Dataset Pathname: pass6.1
 Dataset Creation: Mon Sep 15 18:18:12 2014 by Calc Open-Cased 090629

MICRO Calibration Report

| | | |
|----------------------|--------------------------|--------------|
| Serial Number: | MICRO6 | |
| Tool Model: | PROBE | |
| Performed: | Mon Sep 15 18:08:31 2014 | |
| Caliper Calibration: | Gain=1.984 | Offset=5.300 |
| References | Low Cal | High Cal |
| Readings | 7.800 | 14.000 |
| | 1.400 | 4.525 |
| 1.5" Calibration: | Gain=30.000 | Offset=0.000 |
| References | Low Cal | High Cal |
| Readings | 0.000 | 20.000 |
| | 0.004 | 0.843 |
| 2" Calibration: | Gain=38.000 | Offset=0.100 |
| References | Low Cal | High Cal |
| Readings | 0.000 | 20.000 |
| | 0.021 | 0.810 |

Gamma Ray Calibration Report

| | | |
|-------------------|--------------------------|------|
| Serial Number: | 7 | |
| Tool Model: | Probe1 | |
| Performed: | Mon Sep 15 17:48:33 2014 | |
| Calibrator Value: | 1.0 | GAPI |

Background Reading:

0.0

cps

Calibrator Reading:

1.0

cps

Sensitivity:

0.5000

GAPI/cps