



**COMPLETION
& PRODUCTION
SERVICES CO.**

**COMPENSATED
DENSITY / NEUTRON
LOG**

Company LD DRILLING, INC.
Well ANITA 1-12
Field WILDCAT
County GOVE State KANSAS

Company LD DRILLING, INC.
Well ANITA 1-12
Field WILDCAT
County GOVE
State KANSAS

Location: API #: 15-063-22215-00-00
2970 FSL & 1060 FWL
E2 - SE - SW - NW
SEC 12 TWP 13S RGE 29W
GROUND LEVEL Elevation 2688
Log Measured From KELLY BUSHING 7' A.G.L.
Drilling Measured From KELLY BUSHING
Other Services
DILMEL
Elevation
K.B. 2695
D.F. 2693
G.L. 2688

Date	9/15/14		
Run Number	ONE		
Depth Driller	4530		
Depth Logger	4528		
Bottom Logged Interval	4504		
Top Log Interval	3400		
Casing Driller	8 5/8 @ 369'		
Casing Logger	368'		
Bit Size	7.875		
Type Fluid in Hole	CHEMICAL MUD		
Density / Viscosity	9.3/57	CHLORIDES 500 PPM	
pH / Fluid Loss	10.0/8.8		
Source of Sample	FLOWLINE		
Rm @ Meas. Temp	1.10 @ 91F		
Rmf @ Meas. Temp	0.83 @ 91F		
Rmc @ Meas. Temp	1.32 @ 91F		
Source of Rmf / Rmc	MEASURED		
Rm @ BHT	0.83 @ 121F		
Time Circulation Stopped	2 HOURS		
Time Logger on Bottom			
Maximum Recorded Temperature	121F		
Equipment Number	3802		
Location	HAYS, KS.		
Recorded By	IAN MABB		
Witnessed By	LARRY FRIEND		

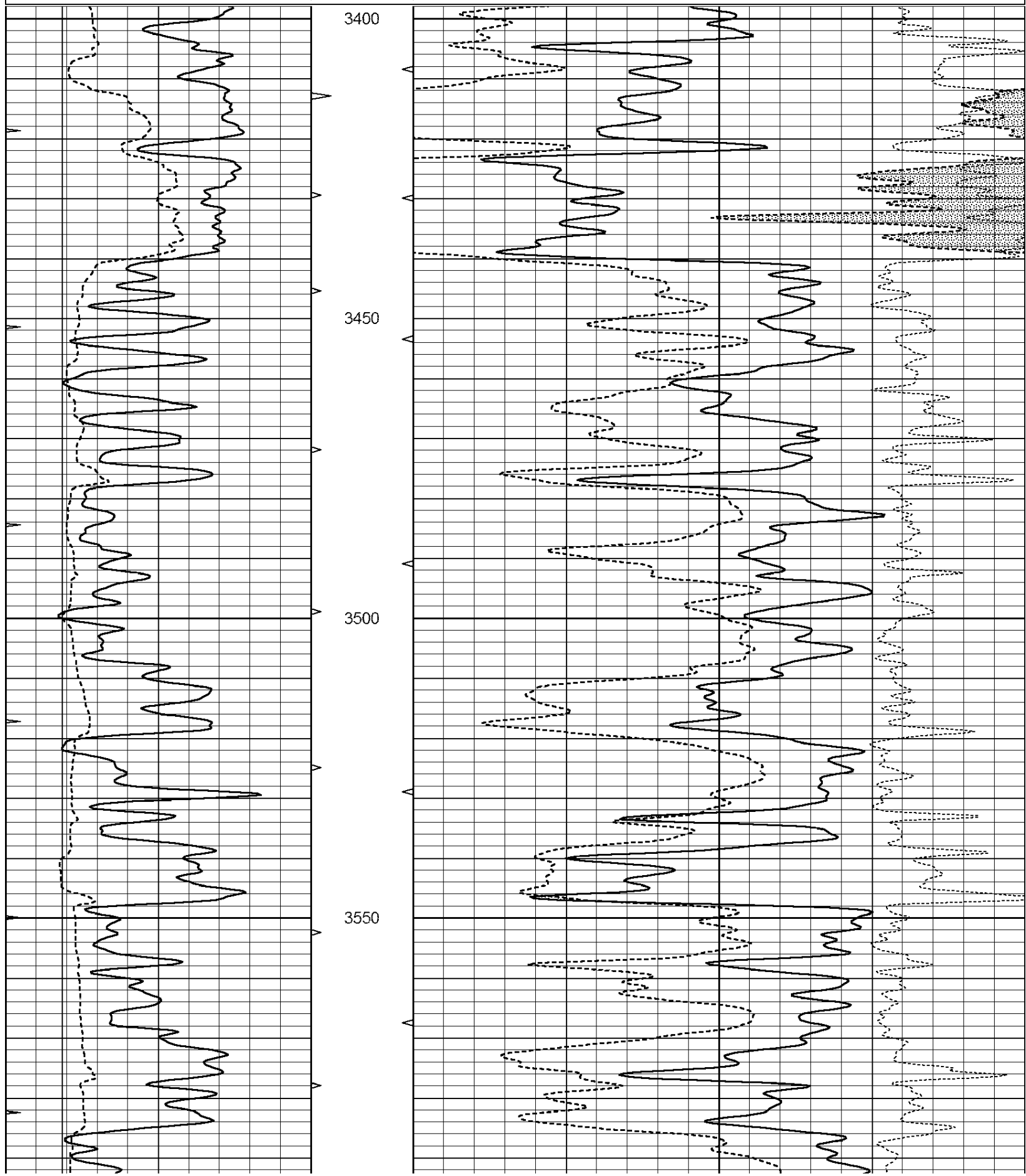
<<< Fold Here >>>

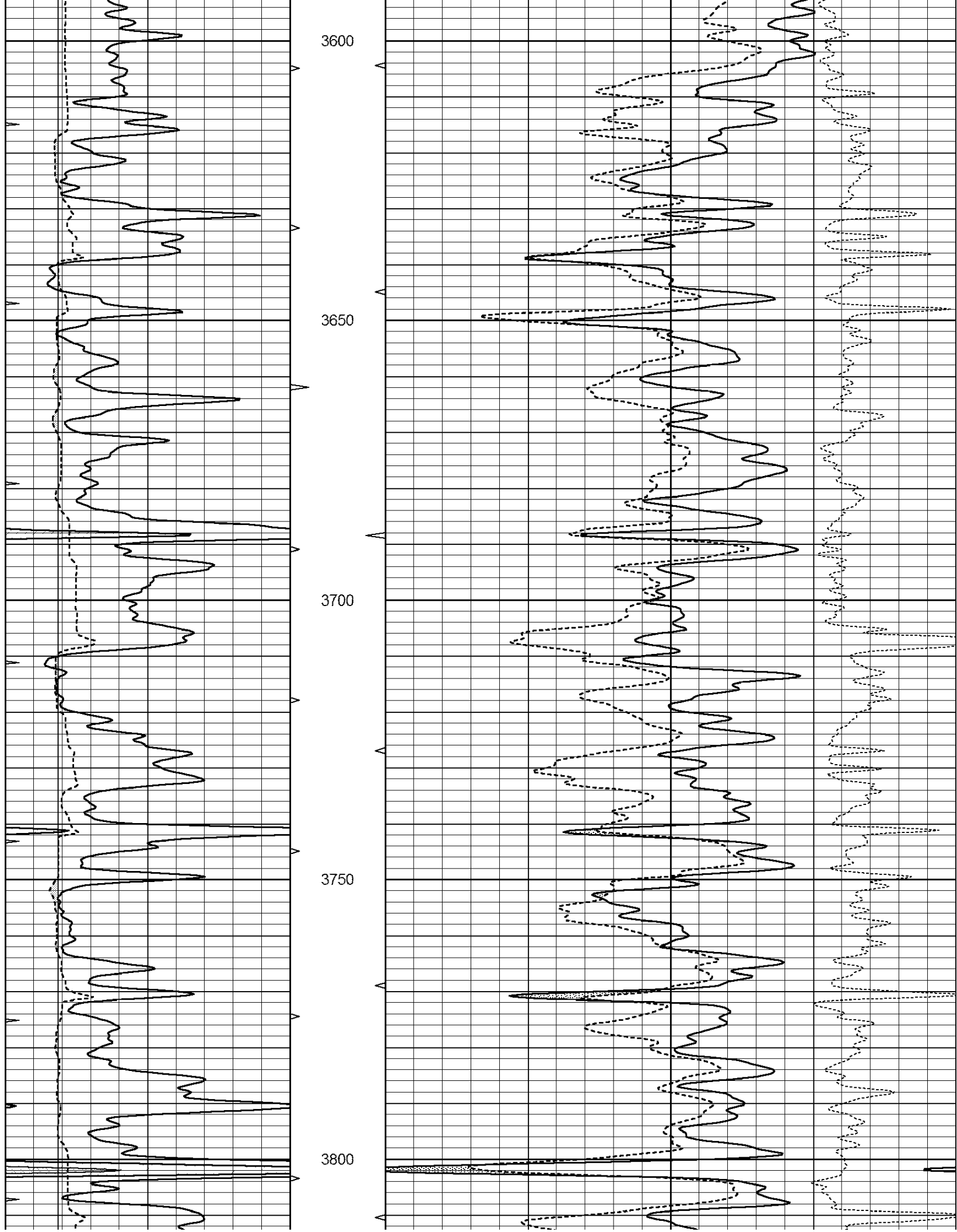
All interpretations are opinions based on inferences from electrical or other measurements and we cannot and do not guarantee the accuracy or correctness of any interpretation, and we shall not, except in the case of gross or willful negligence on our part, be liable or responsible for any loss, costs, damages, or expenses incurred or sustained by anyone resulting from any interpretation made by any of our officers, agents or employees. These interpretations are also subject to our general terms and conditions set out in our current Price Schedule.

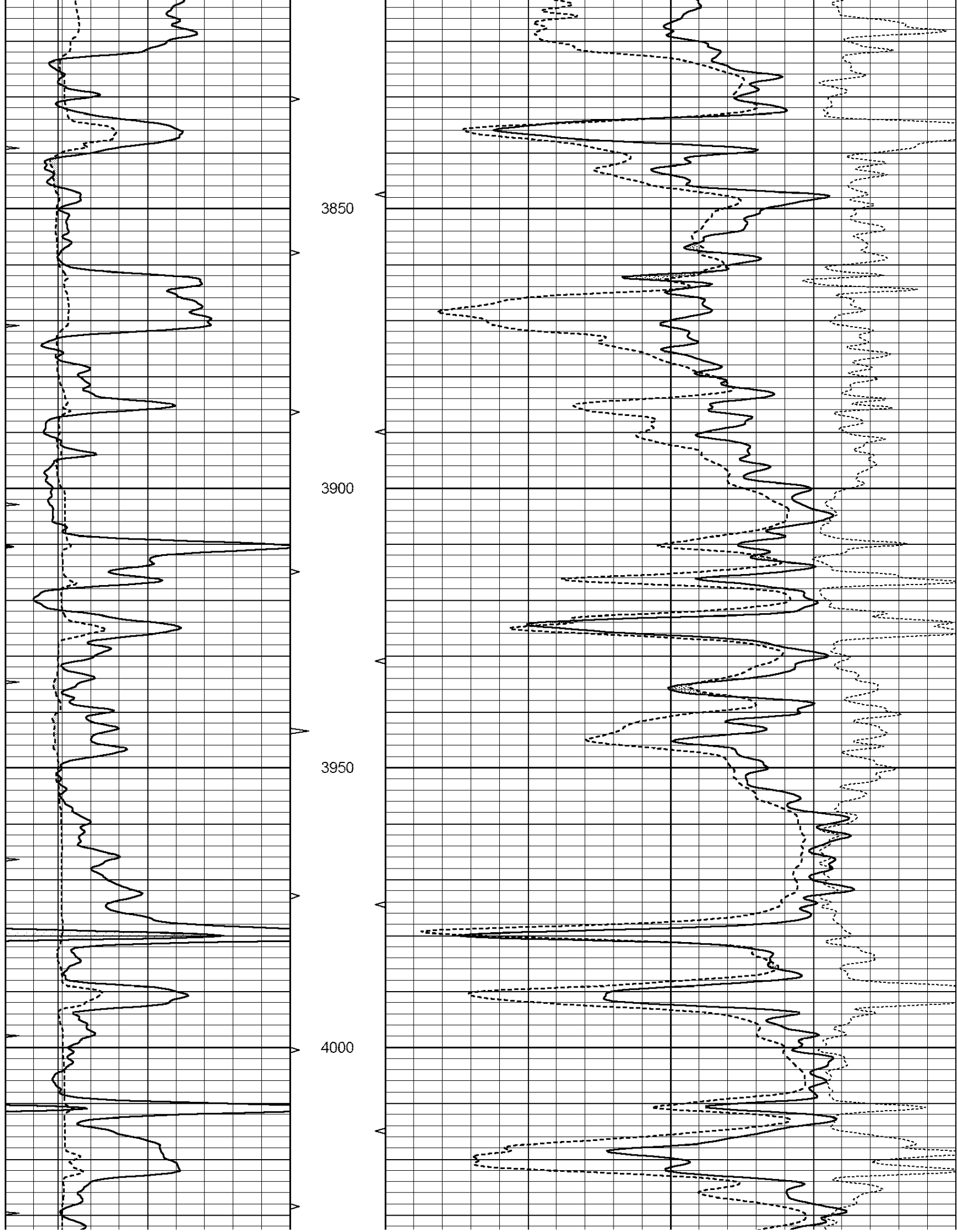
Comments

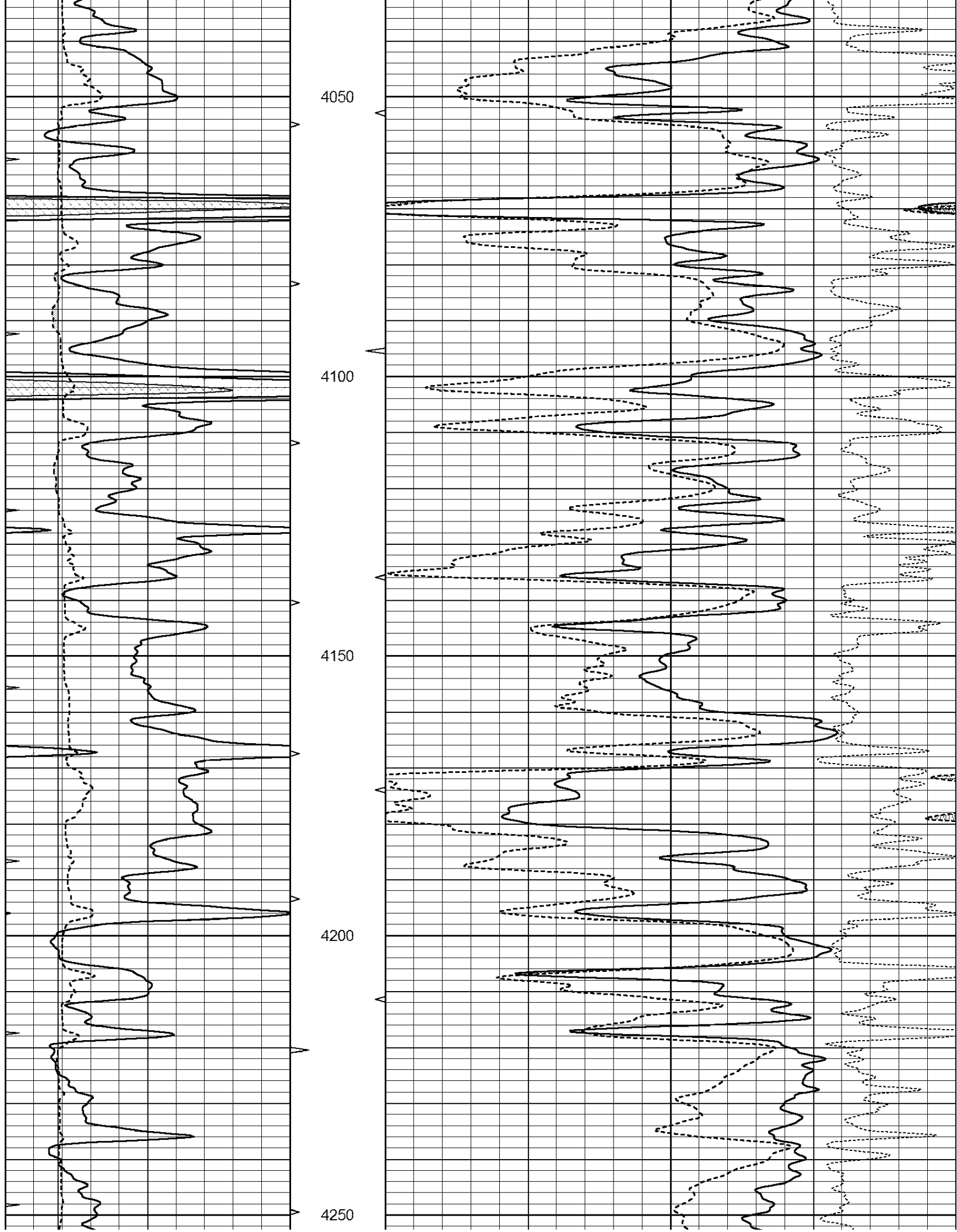
NABORS COMPLETION & PRODUCTION SERVICES CO.
785 (628 - 6395)
THANK YOU FOR YOUR BUSINESS
DIRECTIONS : GOVE, KS. - 1 MILE SOUTH THE RD R - WEST 1 MILE - SOUTH 1/2 MILE - EAST INTO

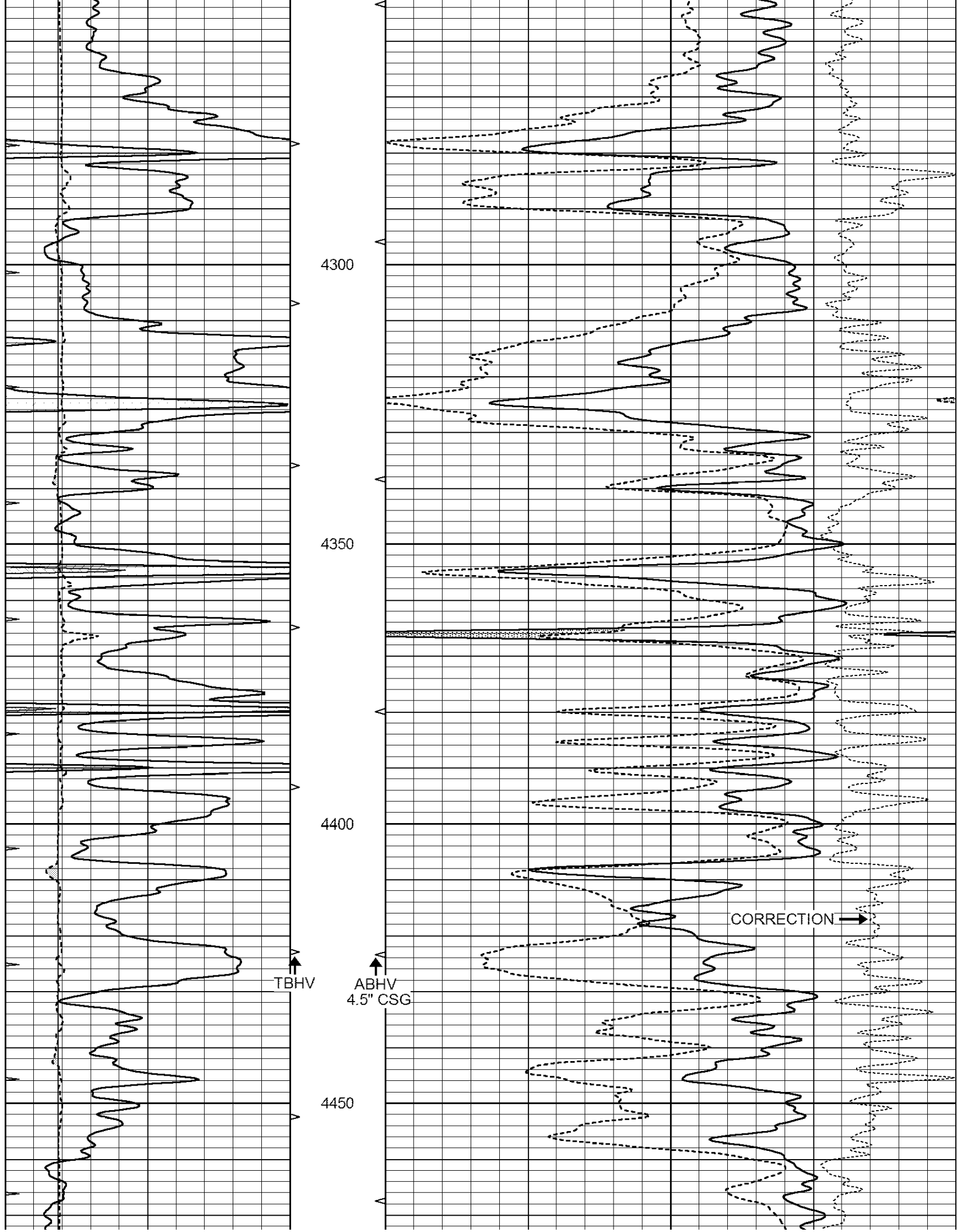
0	GAMMA RAY (GAPI)	150	ABHV	30	COMPENSATED DENSITY (pu)	-10
6	CALIPER (in)	16	10 (ft3)	0 30	COMPENSATED NEUTRON (pu)	-10
0	MINMK	20	TBHV		-0.25 CORRECTION (g/cc)	0.25
			0 (ft3)	10		

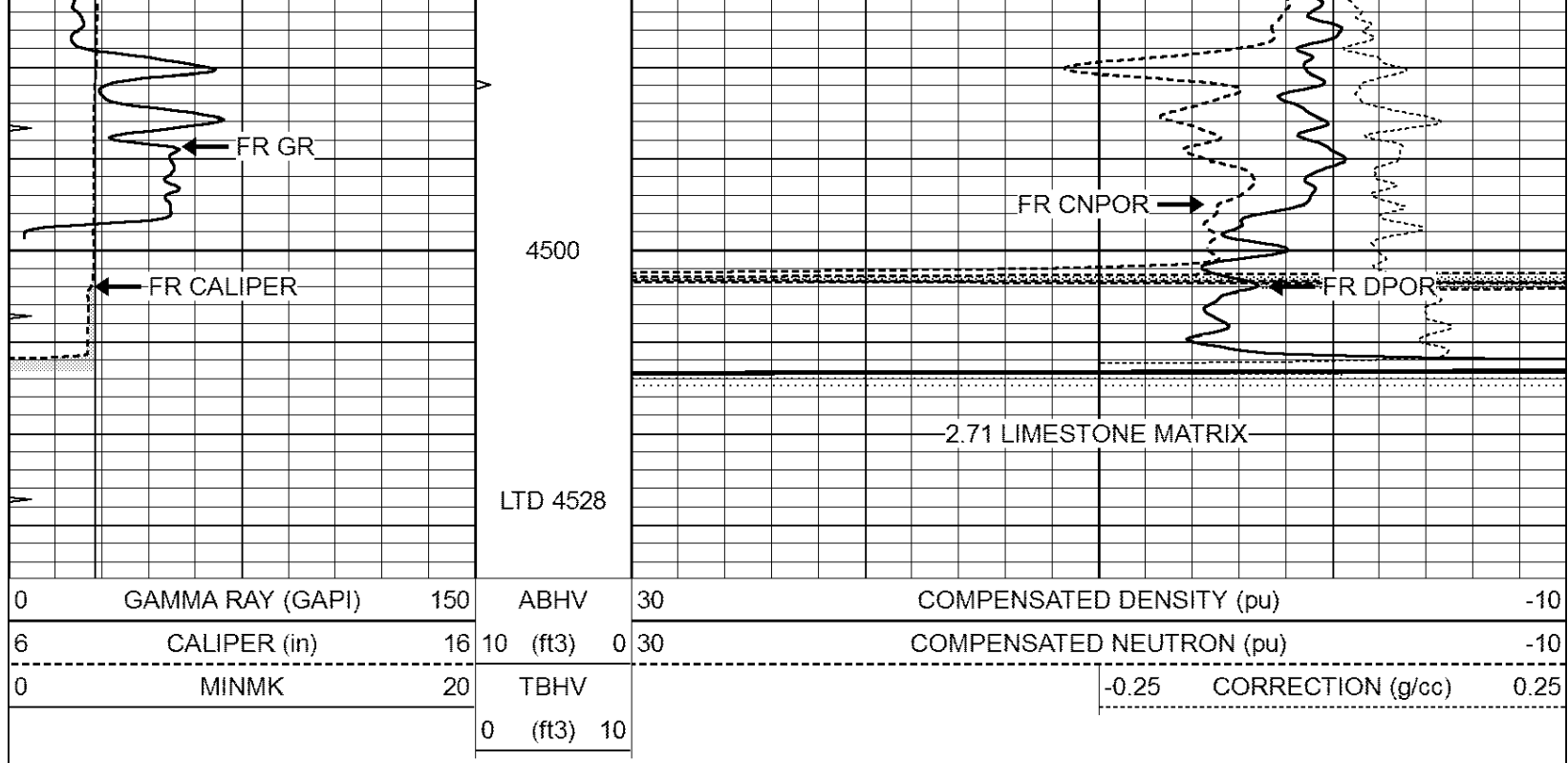








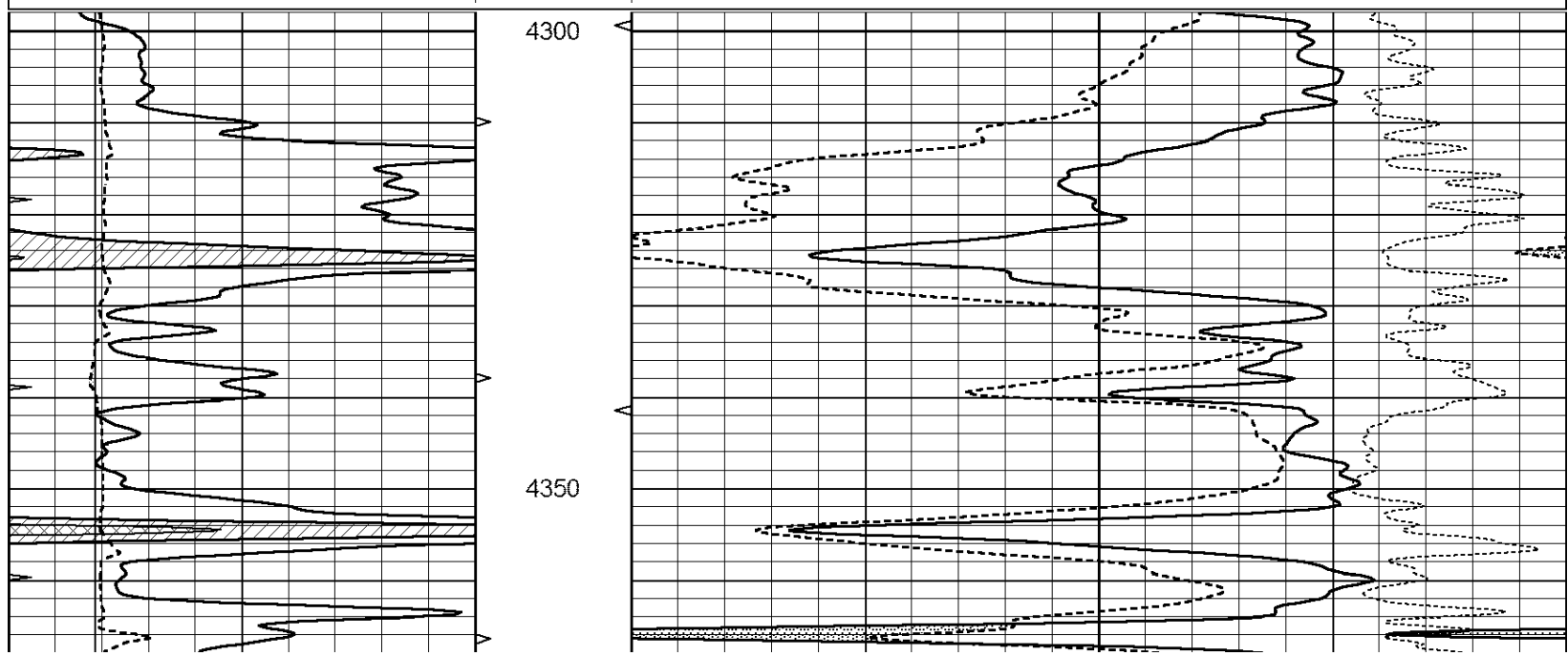


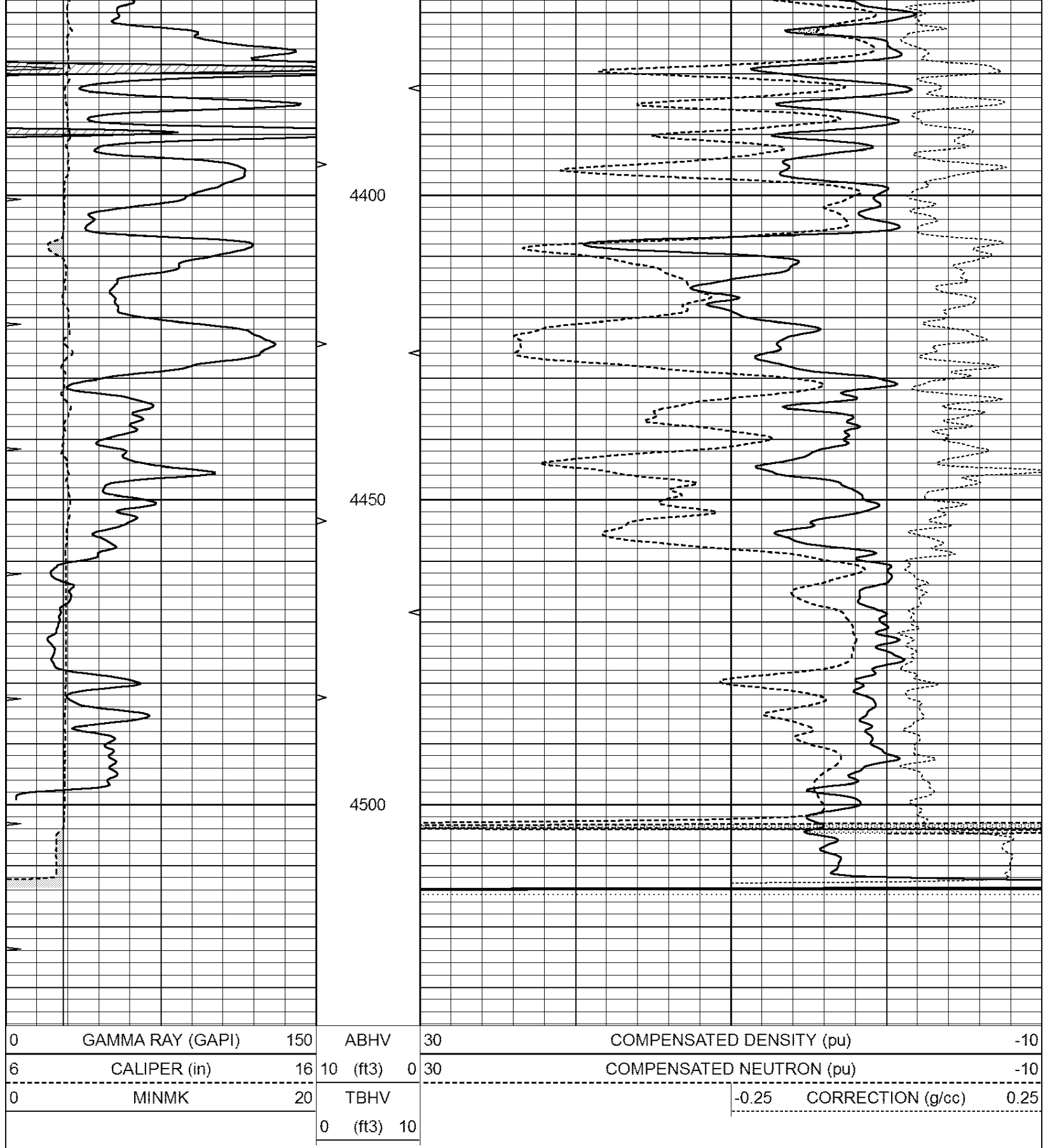


REPEAT SECTION

Database File: 25817ddn.db
 Dataset Pathname: pass2.1
 Presentation Format: _den_neu
 Dataset Creation: Mon Sep 15 15:36:44 2014 by Calc Open-Cased 090629
 Charted by: Depth in Feet scaled 1:240

0	GAMMA RAY (GAPI)	150	ABHV	30	COMPENSATED DENSITY (pu)	-10
6	CALIPER (in)	16	10 (ft3)	0 30	COMPENSATED NEUTRON (pu)	-10
0	MINMK	20	TBHV		-0.25 CORRECTION (g/cc)	0.25
			0 (ft3)	10		





Calibration Report

Database File: 25817ddn.db
 Dataset Pathname: pass3.1
 Dataset Creation: Mon Sep 15 16:20:57 2014 by Calc Open-Cased 090629

Dual Induction Calibration Report

Serial Model:

PROF7-DII G

Serial Model:
 Surface Cal Performed:
 Downhole Cal Performed:
 After Survey Verification Performed:

PROBET DLE0
 Fri Sep 12 18:11:27 2014
 Sat Jan 19 19:51:38 2013
 Sat Jan 19 19:51:38 2013

Surface Calibration									
		Readings			References			Results	
Loop:	Air	Loop	V	Air	Loop		m	b	
Deep	0.793	0.790	V	0.000	400.000	mmho/m	550.000	4.000	
Medium	0.992	1.002	V	0.000	464.000	mmho/m	580.000	-48.000	
Internal:	Zero	Cal		Zero	Cal		m	b	
Deep	0.041	0.642	V	0.000	400.000	mmho/m	664.874	-27.011	
Medium	0.035	0.802	V	0.000	464.000	mmho/m	604.936	-21.367	

Downhole Calibration									
		Readings			References			Results	
	Zero	Cal		Zero	Cal		m'	b'	
Deep	135384.000	27094.500	mmho/m	135400.000	27082.400	mmho/m	1.000	-19.259	
Medium	-47330.100	-9381.740	mmho/m	-47327.100	-9389.280	mmho/m	1.000	-10.154	
LL3		7.322	V		1400.000	Ohm-m			
		0.038	V		20.000	Ohm-m			
		-7.273	V		4000.000	mmho-m			

After Survey Verification									
		Readings			Targets			Results	
	Zero	Cal		Zero	Cal		m'	b'	
Deep	0.000	0.000	mmho/m	135384.000	27094.500	mmho/m	1.000	0.000	
Medium	0.000	0.000	mmho/m	-47330.100	-9381.740	mmho/m	1.000	0.000	
LL3		0.000	Ohm-m		1400.000	Ohm-m			
		0.000	Ohm-m		20.000	Ohm-m			
		0.000	mmho-m		4000.000	mmho-m			

Compensated Density Calibration Report

Serial-Model: GEAR5-GEARHART
 Source / Verifier: 147 / 147
 Master Calibration Performed: Sat Aug 02 01:49:41 2014
 Before Survey Verification Performed:
 After Survey Verification Performed:

Master Calibration							
		Density		Far Detector		Near Detector	
Magnesium		1.710	g/cc	943.83		576.01	cps
Aluminum		2.610	g/cc	212.01		399.19	cps
Spine Angle = 76.20				Density/Spine Ratio = 0.585			
		Size		Reading			
Small Ring		8.40	in	1.64	V		
Large Ring		14.00	in	2.93	V		

Before Survey Verification					
		Target		Measured	
			g/cc		g/cc
			g/cc		g/cc
			g/cc		g/cc

Target

Measured

g/cc
g/cc
g/cc

g/cc
g/cc
g/cc

Compensated Neutron Calibration Report

Serial Number: 080620
Tool Model: Probe

PRE-SURVEY VERIFICATION

Detector	Readings	Measured	Target
Short Space	cps		
Long Space	cps	pu	pu

POST-SURVEY VERIFICATION

Detector	Readings	Measured	Target
Short Space	cps		
Long Space	cps	pu	pu

Gamma Ray Calibration Report

Serial Number: 46001
Tool Model: Probe1
Performed: Fri Sep 12 17:20:19 2014

Calibrator Value: 1.0 GAPI

Background Reading: 0.0 cps
Calibrator Reading: 1.0 cps

Sensitivity: 0.2600 GAPI/cps