



MIDWEST SURVEYS
 LOGGING - PERFORATING - CONSULTING SERVICES
 P.O. Box 68, Osawatomie, KS 68064
 913 / 755 - 2128

GAMMA RAY / NEUTRON / CCL

File No. _____

Company **Altavista Energy, Inc.**

Well **Early No. A1-8**

Field **Baldwin**

County **Douglas** State **Kansas**

Location **3110' FSL & 1240' FEL**

NW-SW-SE-NE

Other Services
Perforate

Sec. 11 Typ. 15s Rge. 20e
 Permament Datum GL Elevation N/A
 Log Measured From GL
 Drilling Measured From GL

Date 05-02-2014

Run Number One

Depth Logger 10980.0

Bottom Logged Interval 1012.8

Fluid Level Full

Type Fluid Water

Density / Viscosity NA

Salinity - PPM Cl NA

Max. Recorded Temp NA

Estimated Cement Top NA

Equipment No. 107

Recorded By Steve Mundisch

Location 107

Checked By Doug Evans

BORE-HOLE RECORD				CASING RECORD			
RUN	NO.	BIT	FROM	TO	SIZE	WGT	FROM
One	9.875"	0.0	98.0	1060.0	7.00"	17.0#	0.0
Two	5.625"	98.0	1060.0		2.875"	6.5#	0.0
							1018.0

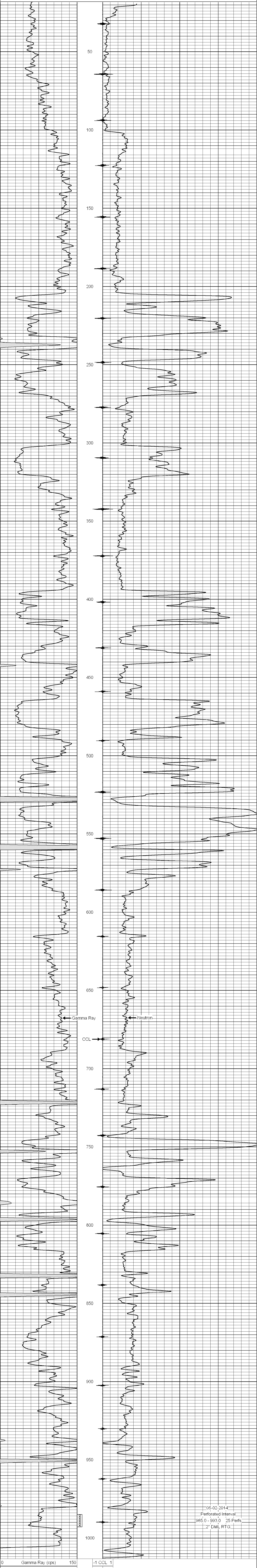
<<< Fold Here >>>

All interpretations are opinions based on inferences from electrical or other measurements and we cannot and do not guarantee the accuracy or correctness of any interpretation, and we shall not, except in the case of gross or willful negligence on our part, be liable or responsible for any loss, costs, damages, or expenses incurred or sustained by anyone resulting from any interpretation made by any of our officers, agents or employees. These interpretations are also subject to our general terms and conditions set out in our current Price Schedule.

Comments

Drilling Contractor :
 Town Oilfield Services, Inc

Database File: early 8ai.db
 Dataset Pathname: pass1
 Presentation Format: gr-n-ccl
 Dataset Creation: Fri May 02 09:10:39 2014 by Log SCH 111116
 Charted by: Depth in Feet scaled 1:240



05-02-2014
 Perforated Interval
 985.0 - 993.0 25 Perfs.
 2" DML RTG