



Pioneer Energy Services

Sonic Cement
Bond Log

15-035-24546-00-00

API No.

Company Future Acquisition Company, LLC

Well Tito's No.2

Field Wildcat

County Cowley State Kansas

Location

990' FNL & 330' FEL

Other Services

Perforate

Sec: 21 Twp: 33S Rge: 5E

Elevation

Permanent Datum Ground Level Elevation 1833

Log Measured From Kelly Bushing 10 Ft. Above Perm. Datum

K.B. 1843
D.F. 1842
G.L. 1833

Run Number One

Date Survey 1/7/2013

Date Cementing 12/17/2013

Type Cementing Operation Primary

Depth Driller 3650

Depth Logger 3600

Logged Interval 3598 to 1450

Casing Driller 5.5 @ TD

Float Collar -- D.V. Tool // @

Squeeze Depth //

Amount & Type Cement //

Amount & Type Admix //

Type Fluid In Hole Water

Fluid Level Full

Salinity PPM CL //

Weight lb/gal -- Vis. // //

Approx. Logged Cement Top 1658

Calculated Cement Top //

Max. Hole Temperature 120

Tool No. RBT1-1

Spacing Recorded 3-5

Equipment -- Location 106 Pratt

Recorded By S. Chesney

Witnessed By Terry Madden

<<< Fold Here >>>

All interpretations are opinions based on inferences from electrical or other measurements and we cannot and do not guarantee the accuracy or correctness of any interpretation, and we shall not, except in the case of gross or willful negligence on our part, be liable or responsible for any loss, costs, damages, or expenses incurred or sustained by anyone resulting from any interpretation made by any of our officers, agents or employees. These interpretations are also subject to our general terms and conditions set out in our current Price Schedule.

Comments

Thank you for using Pioneer Energy Services
(620) 672-8300

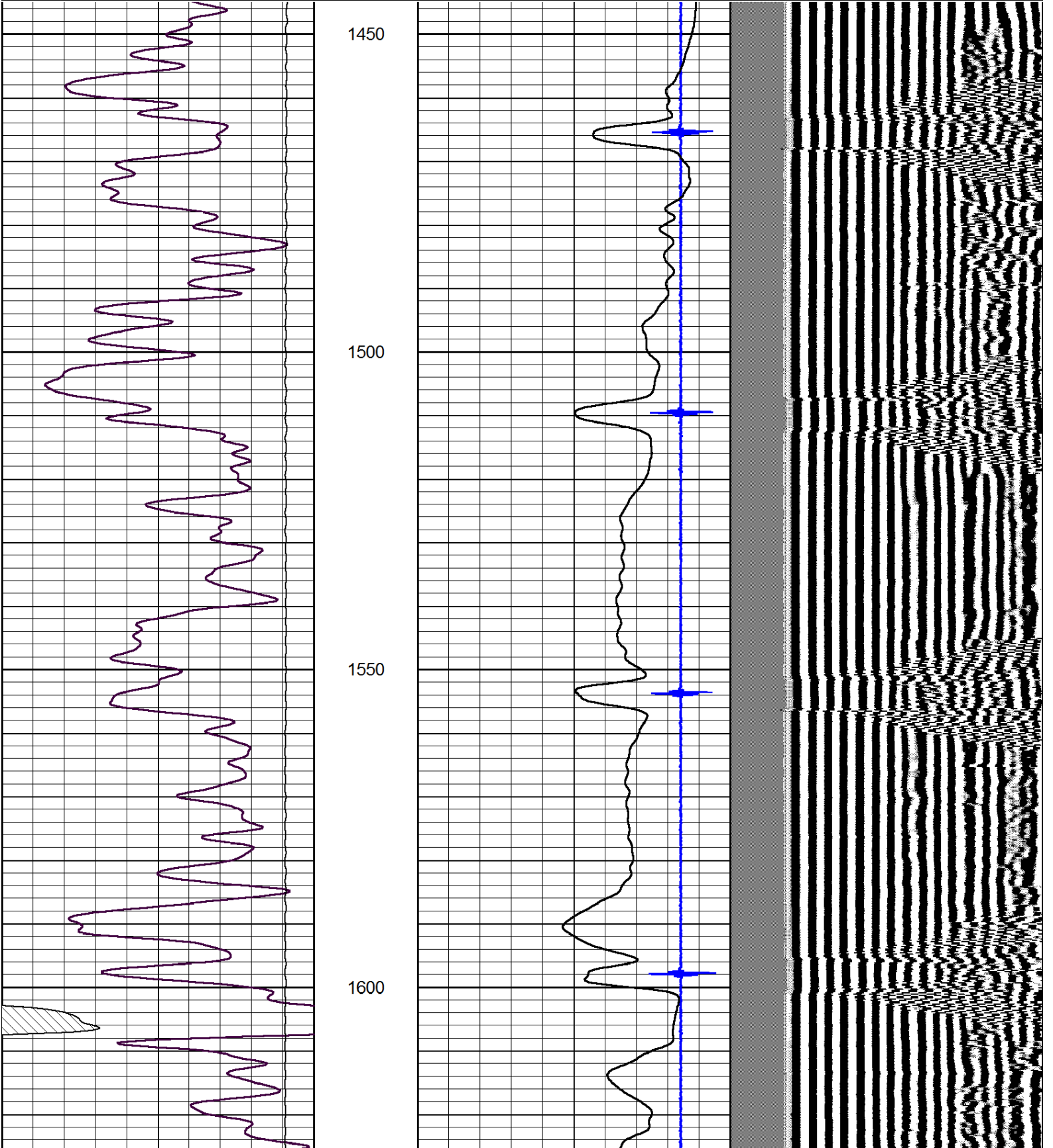
Winfield, E to CoRd 1, 5.25S,
W into

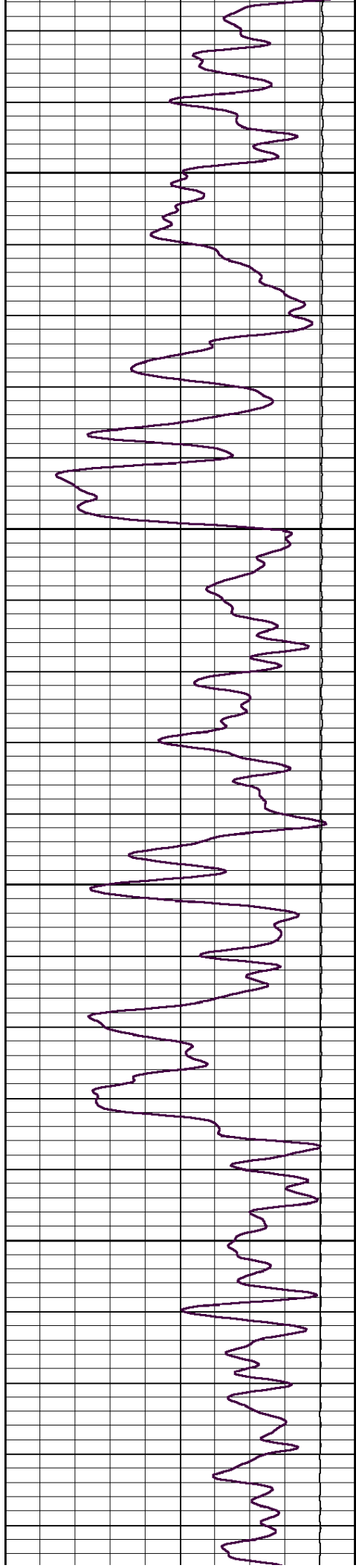


Main Pass

Database File: future-tito-2.db
Dataset Pathname: grcbl/pass5
Presentation Format: cbldr
Dataset Creation: Mon Jan 06 22:26:58 2014 by Calc SCH 111116
Charted by: Depth in Feet scaled 1:240

0	Gamma Ray	150	amp3ft	16	Casing Collars	-3	200	wvf5ft	1200
			(mV)	0	Amplified Amplitude (mV)	100			
			-100 10	0	Pipe Amplitude (mV)	20			





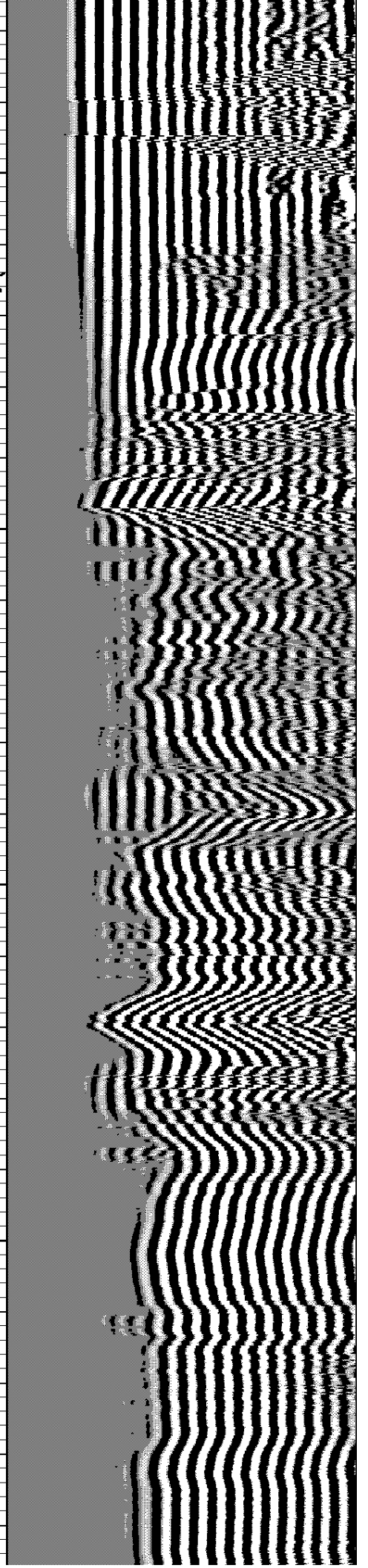
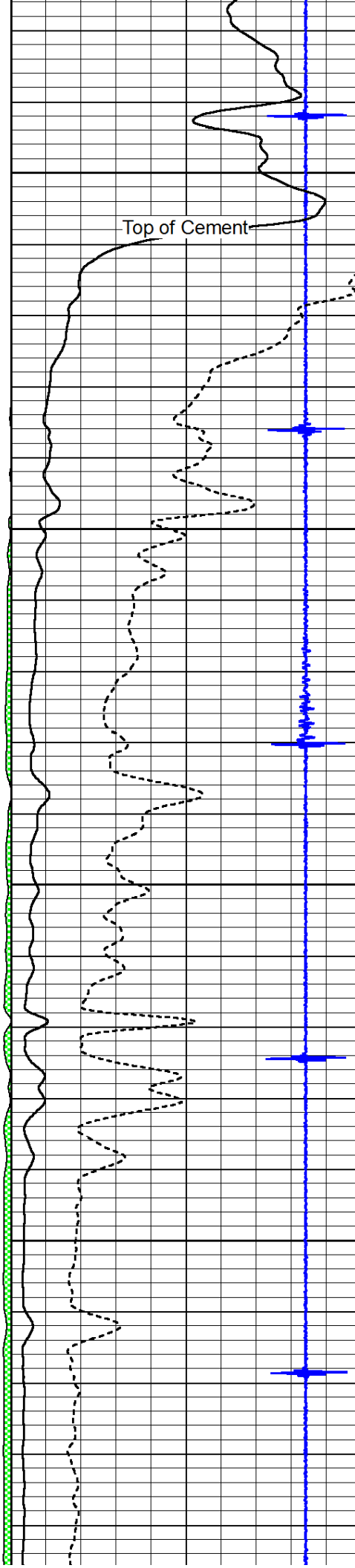
1650

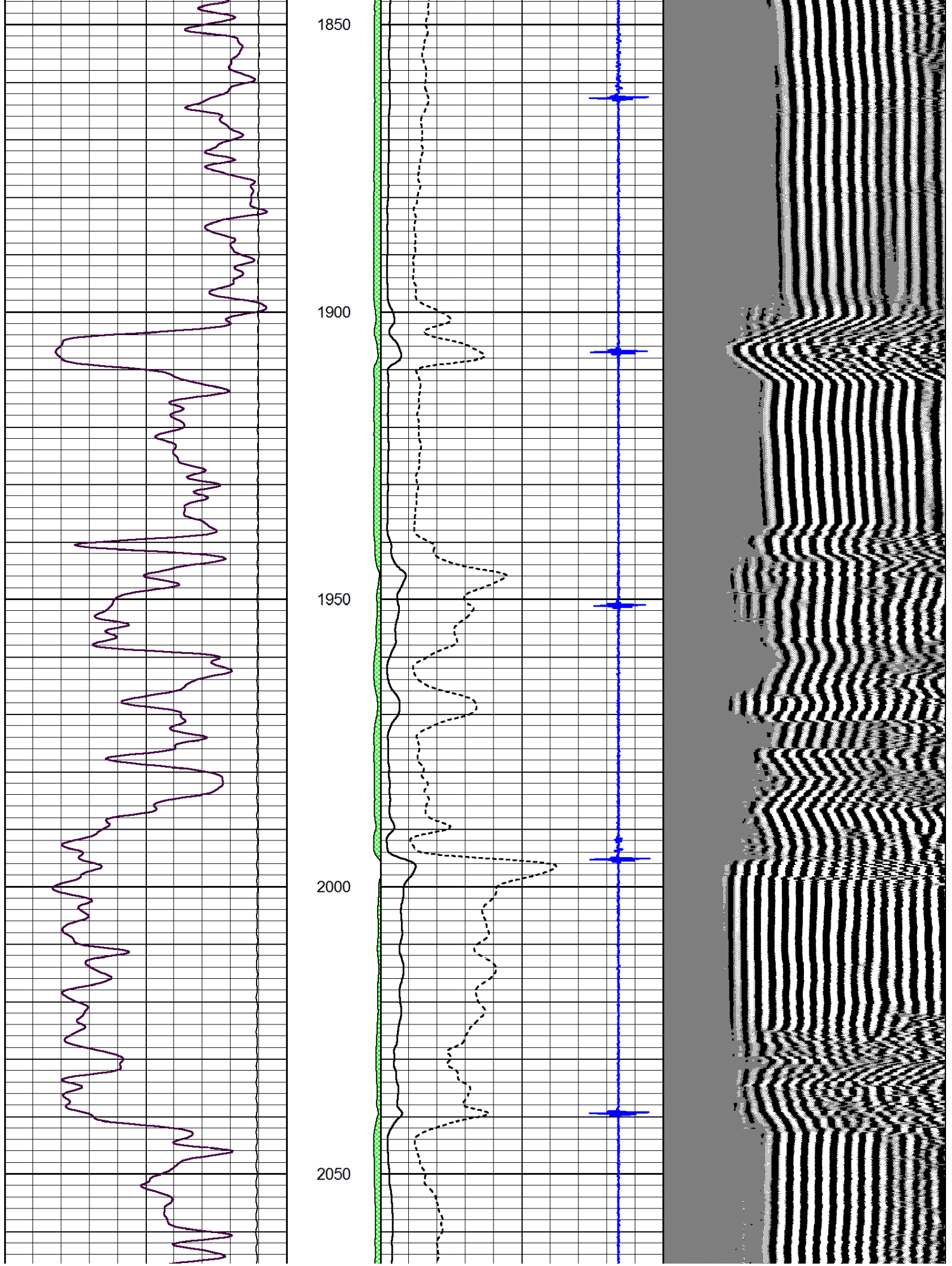
Top of Cement

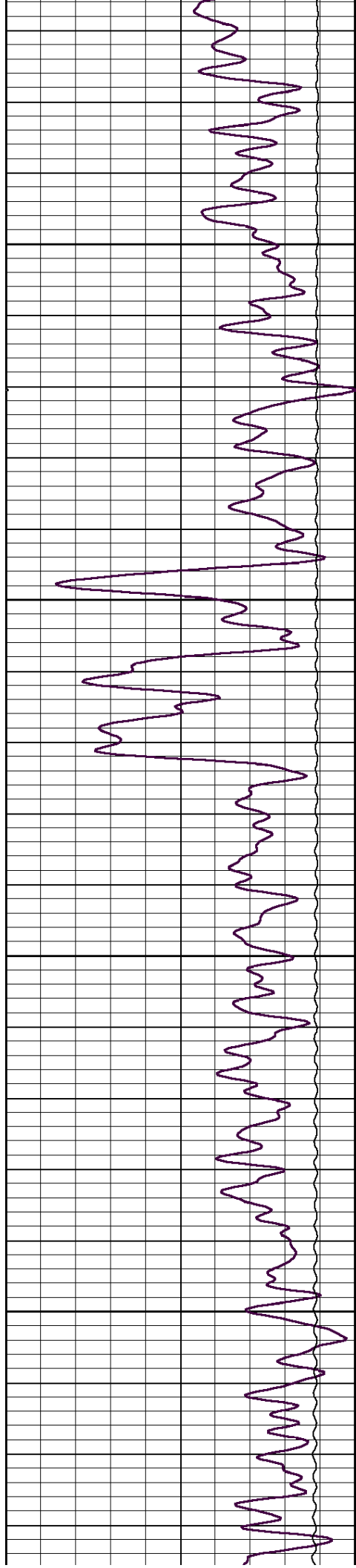
1700

1750

1800





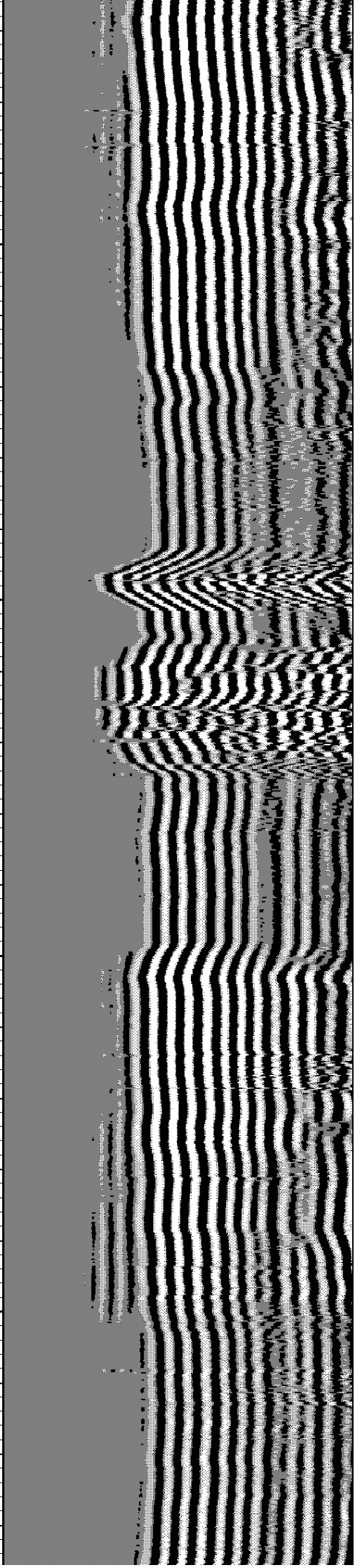
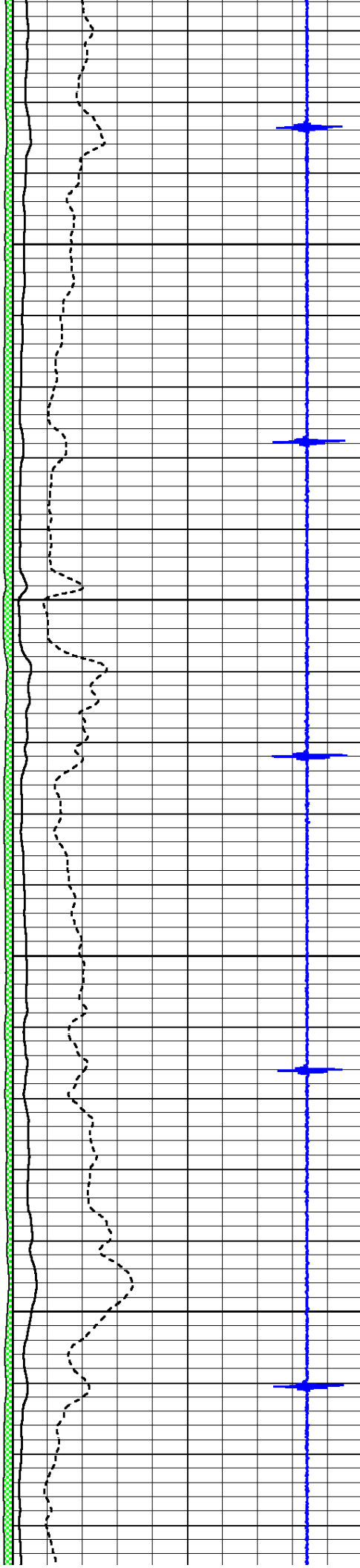


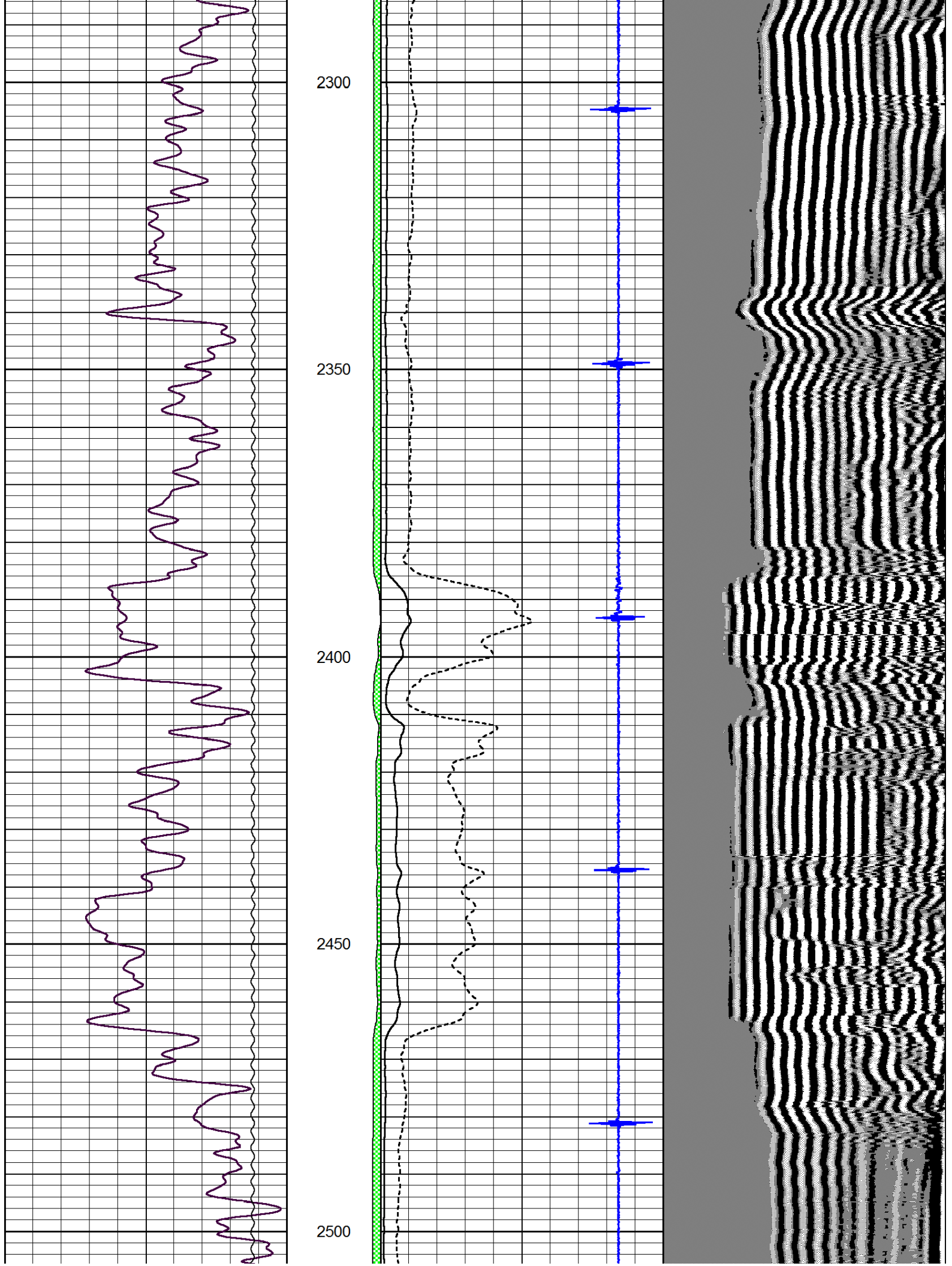
2100

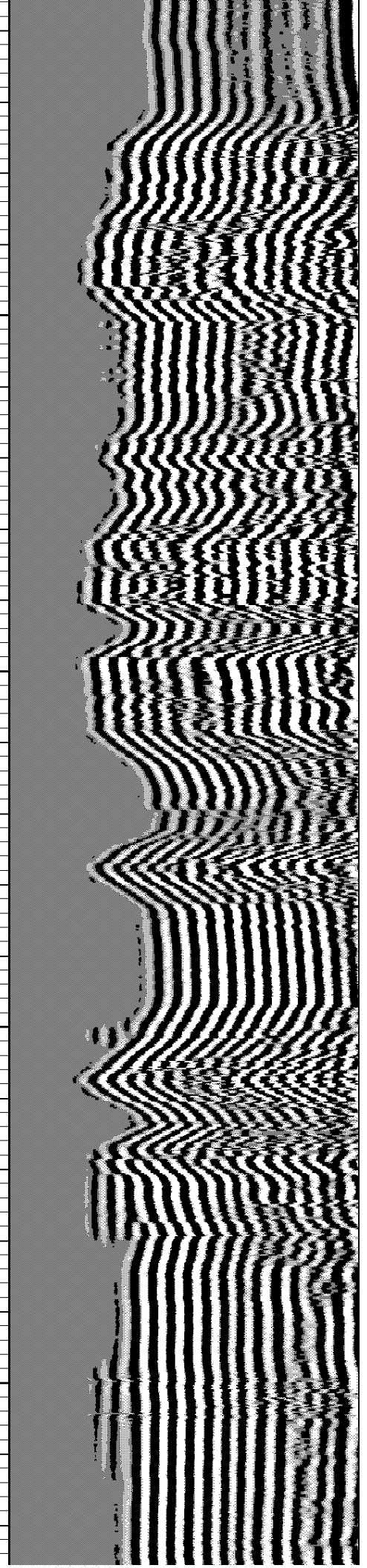
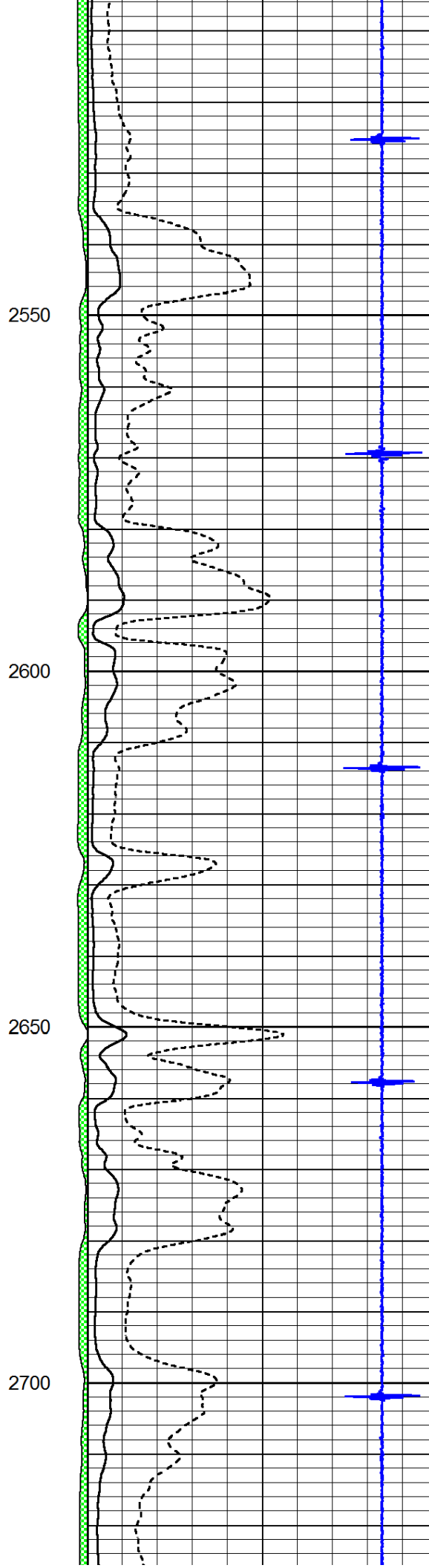
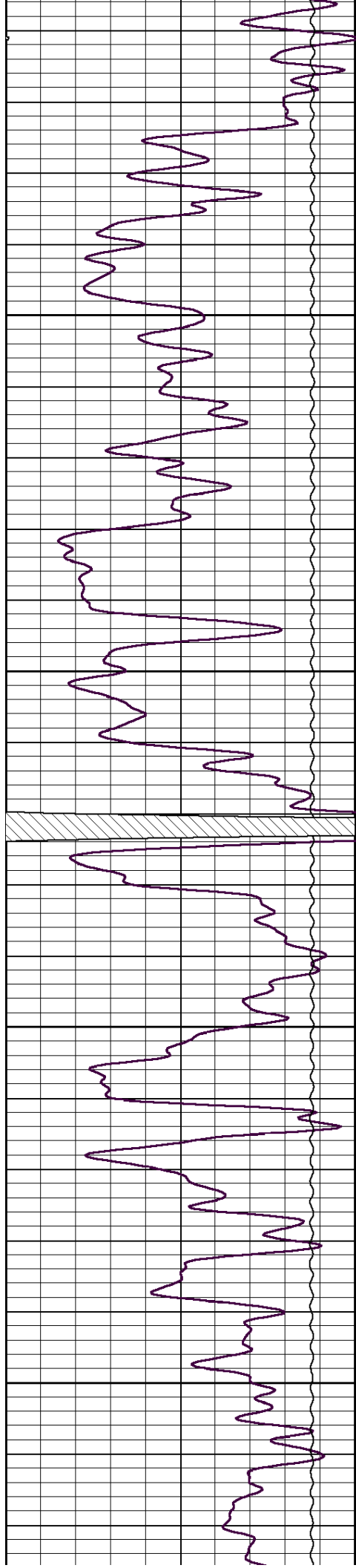
2150

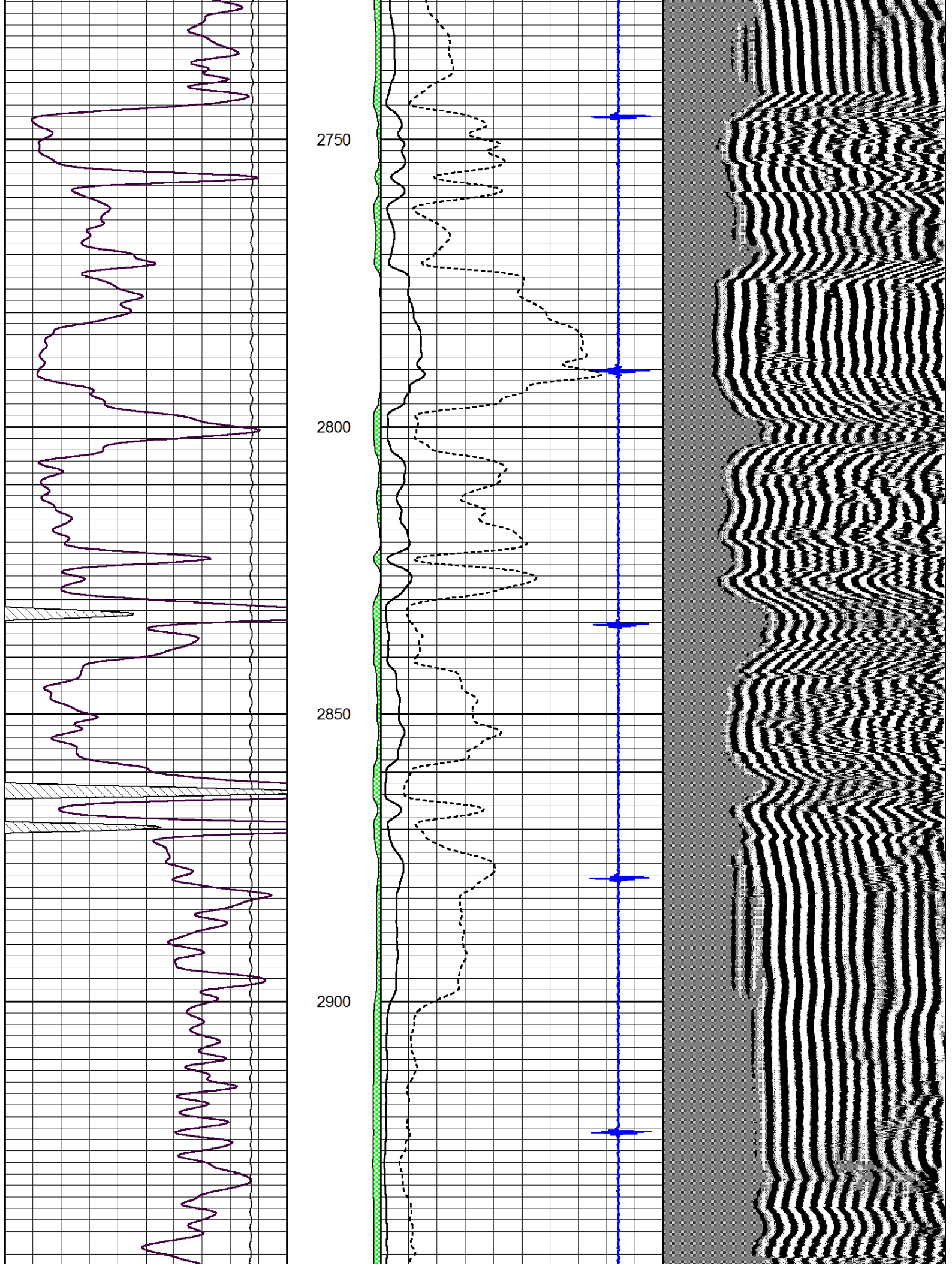
2200

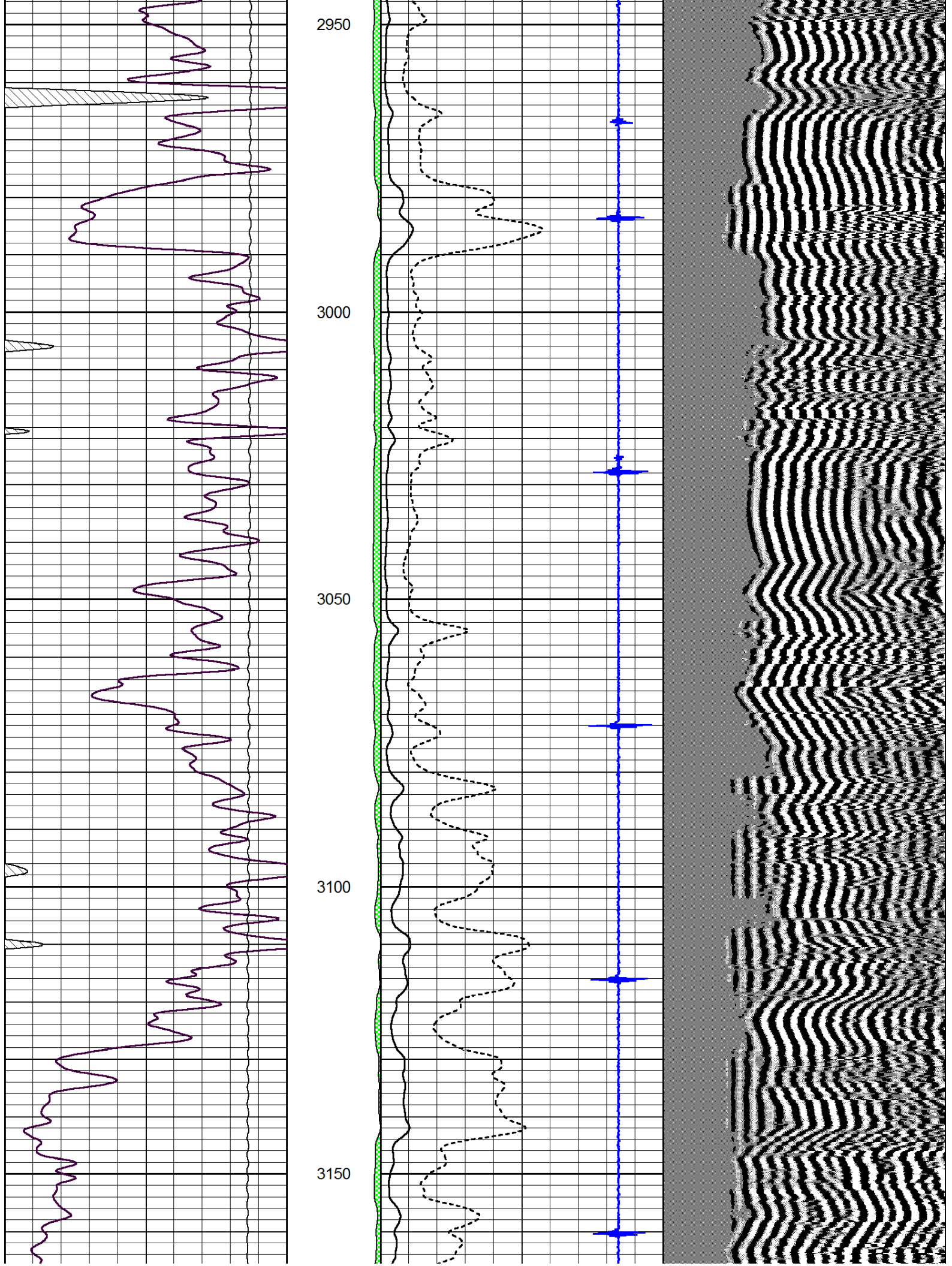
2250

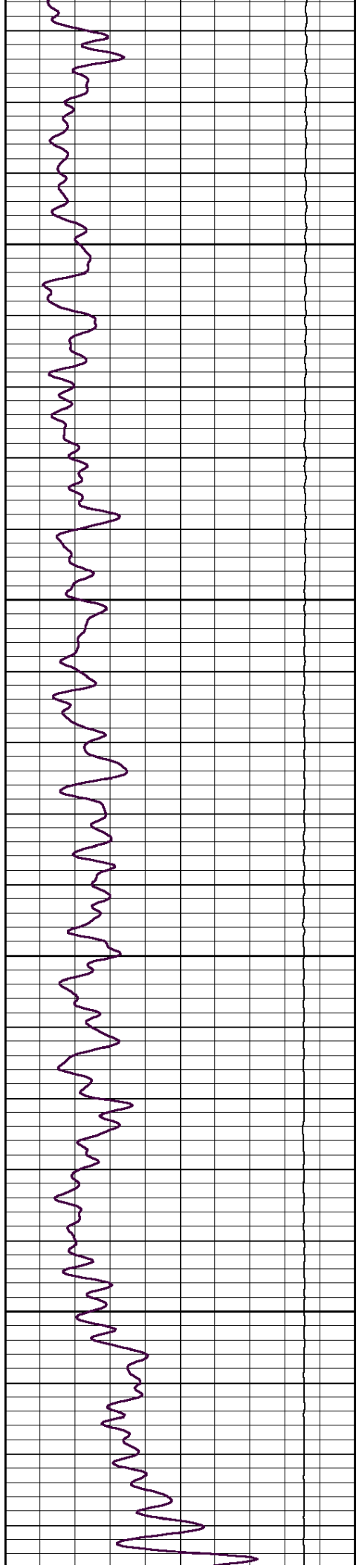










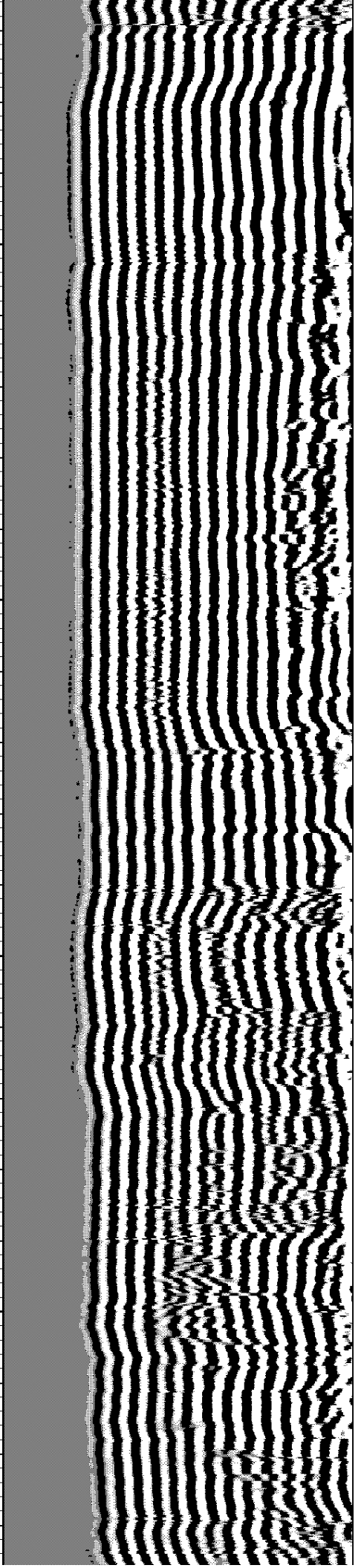
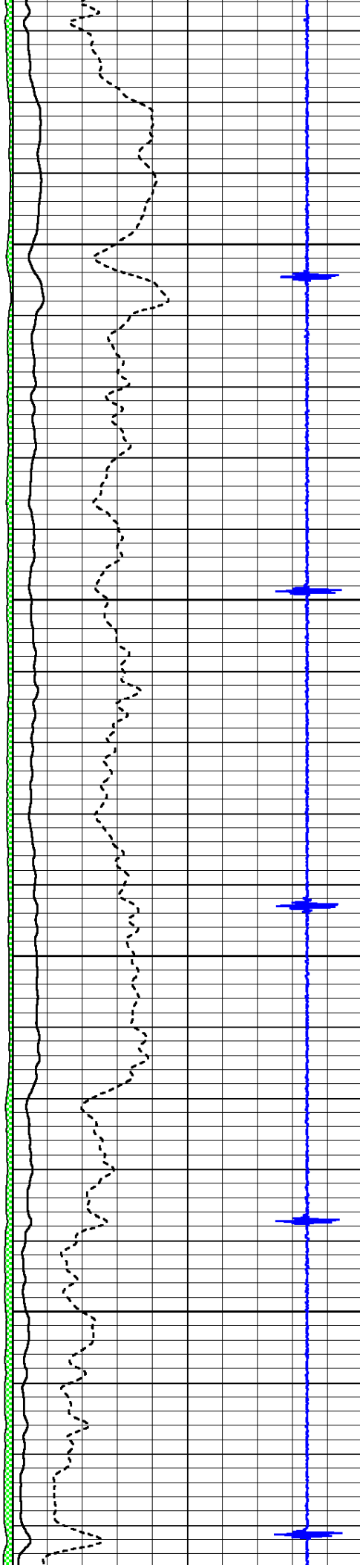


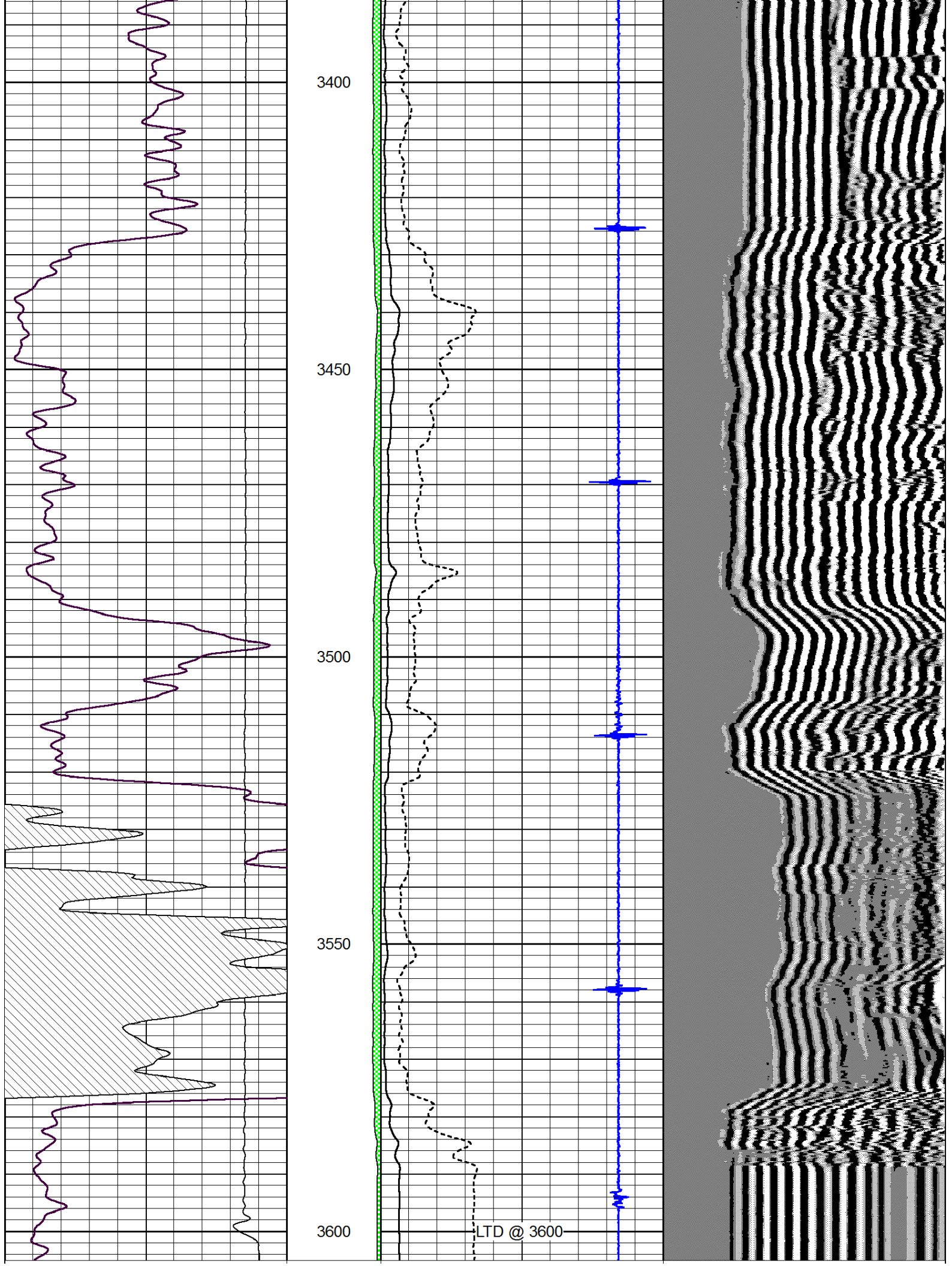
3200

3250

3300

3350





0	Gamma Ray	150	amp3ft	16	Casing Collars	-3	200	wvf5ft	1200
			(mV)	0	Amplified Amplitude (mV)	100			
			-100	10	Pipe Amplitude (mV)	20			



Repeat Section

Database File: future-tito-2.db
 Dataset Pathname: grcbl/pass4
 Presentation Format: cblcr
 Dataset Creation: Mon Jan 06 21:34:39 2014 by Log SCH 111116
 Charted by: Depth in Feet scaled 1:240

0	Gamma Ray	150	amp3ft	16	Casing Collars	-3	200	wvf5ft	1200
			(mV)	0	Amplified Amplitude (mV)	100			
			-100	10	Pipe Amplitude (mV)	20			

