



Pioneer Energy Services

# Dual Induction Log

API No.	15-009-20282-00-01		
Company	C G Oil, Inc.		
Well	JMR #1		
Field	Trapp		
County	Barton	State	Kansas
Location	4950' FSL & 2310' FEL		
Sec: 28	Twp: 16S	Rge: 13W	Other Services CNL/CDL MEL

Permanent Datum	Ground Level	Elevation 1968	K.B. 1978
Log Measured From	Kelly Bushing	10 Ft. Above Perm. Datum	D.F. 1968
Drilling Measured From	Kelly Bushing		G.L. 1968
Date	3/10/2014		
Run Number	One		
Depth Driller	3525		
Depth Logger	3510		
Bottom Logged Interval	3509		
Top Log Interval	350		
Casing Driller	8.625 @ 370		
Casing Logger	374		
Bit Size	7.875		
Type Fluid in Hole	Chemical		
Salinity, ppm CL	9700		
Density / Viscosity	8.7	87	
pH / Fluid Loss	11.0	9.2	
Source of Sample	Flowline		
Rm @ Meas. Temp	0.32 @ 70		
Rmf @ Meas. Temp	0.24 @ 70		
Rmc @ Meas. Temp	0.43 @ 70		
Source of Rmf / Rmc	Charts		
Rm @ BHT	0.20 @ 113		
Operating Rig Time	4 Hours		
Max Rec. Temp. F	113		
Equipment Number	91		
Location	Hays		
Recorded By	D. Schmidt		
Witnessed By	Ron Schmidberger		

<<< Fold Here >>>

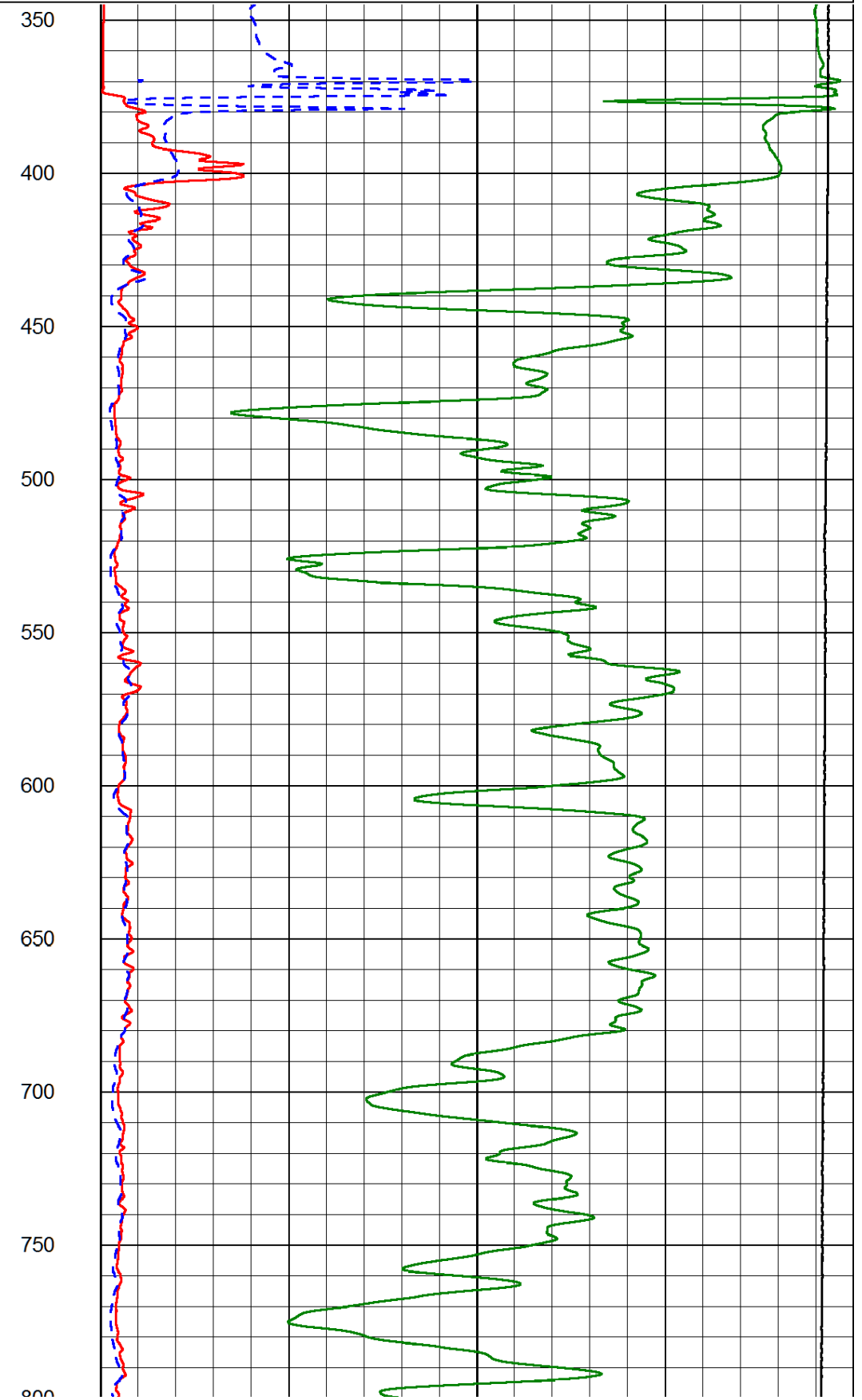
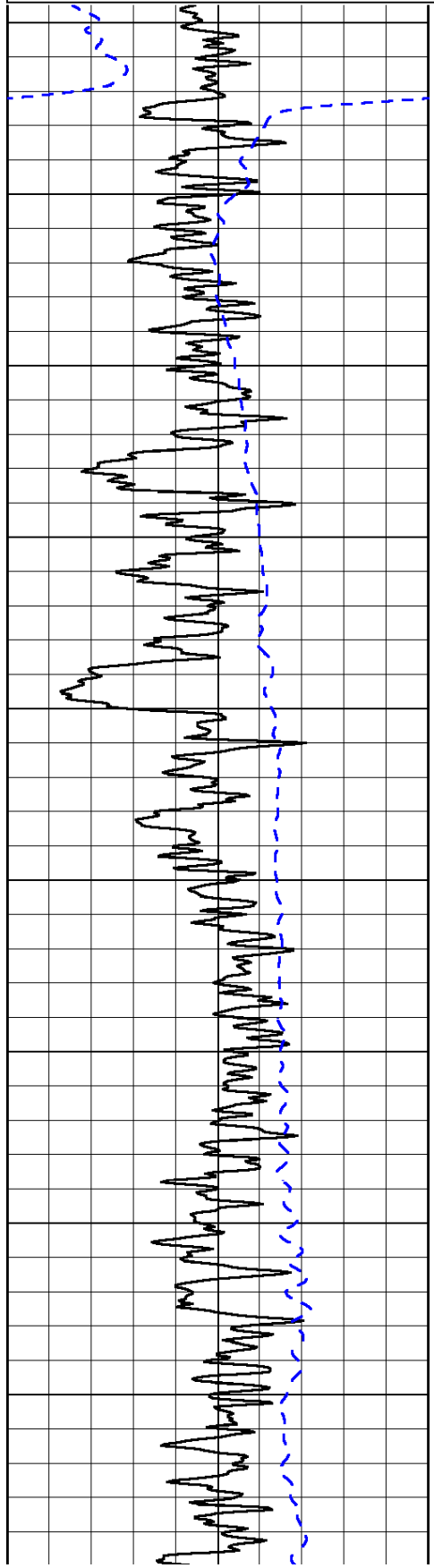
All interpretations are opinions based on inferences from electrical or other measurements and we cannot and do not guarantee the accuracy or correctness of any interpretation, and we shall not, except in the case of gross or willful negligence on our part, be liable or responsible for any loss, costs, damages, or expenses incurred or sustained by anyone resulting from any interpretation made by any of our officers, agents or employees. These interpretations are also subject to our general terms and conditions set out in our current Price Schedule.

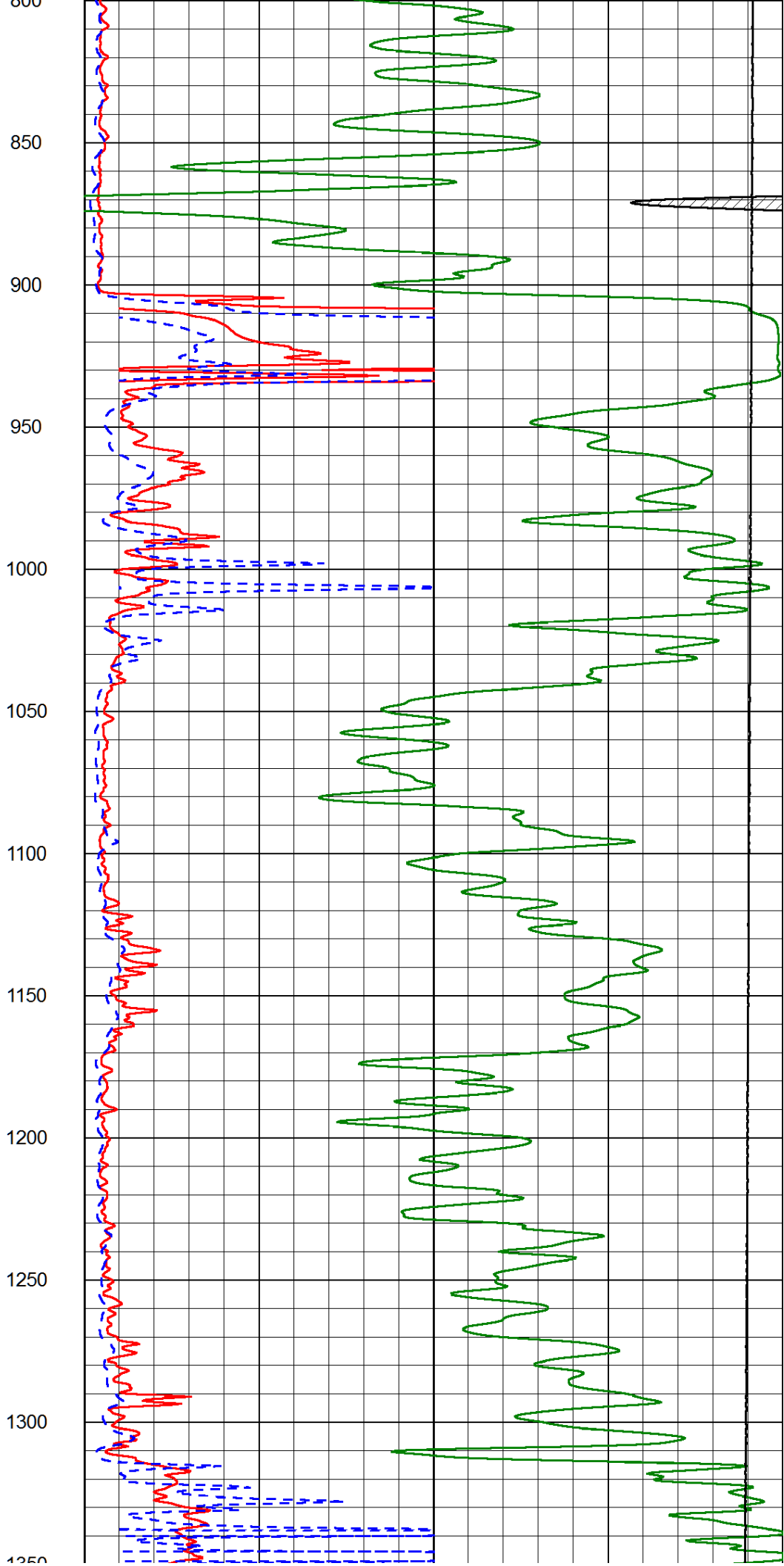
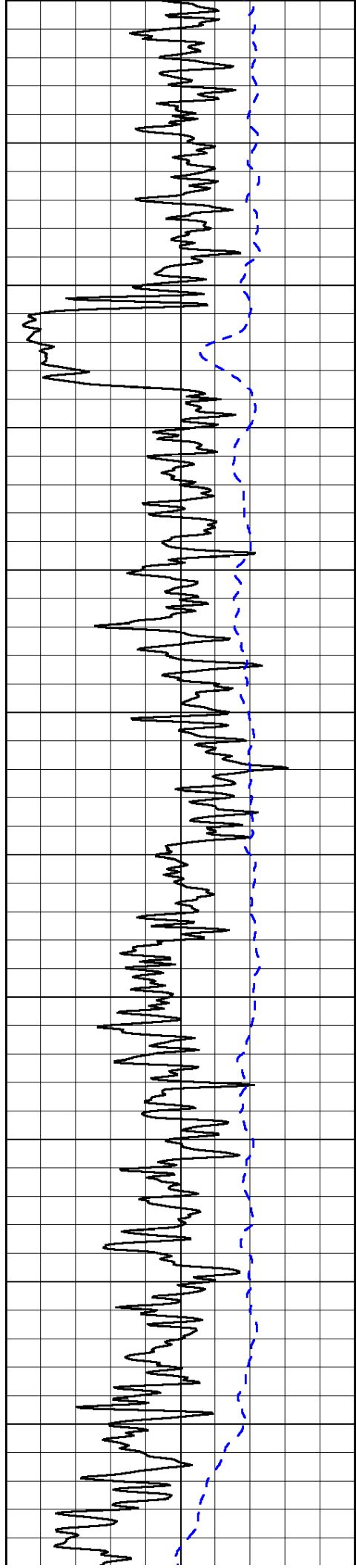
### Comments

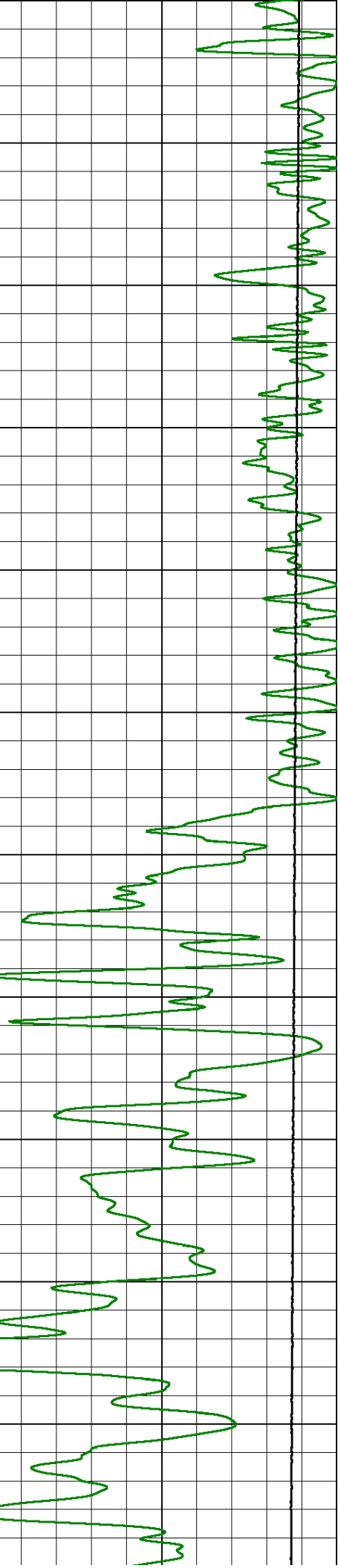
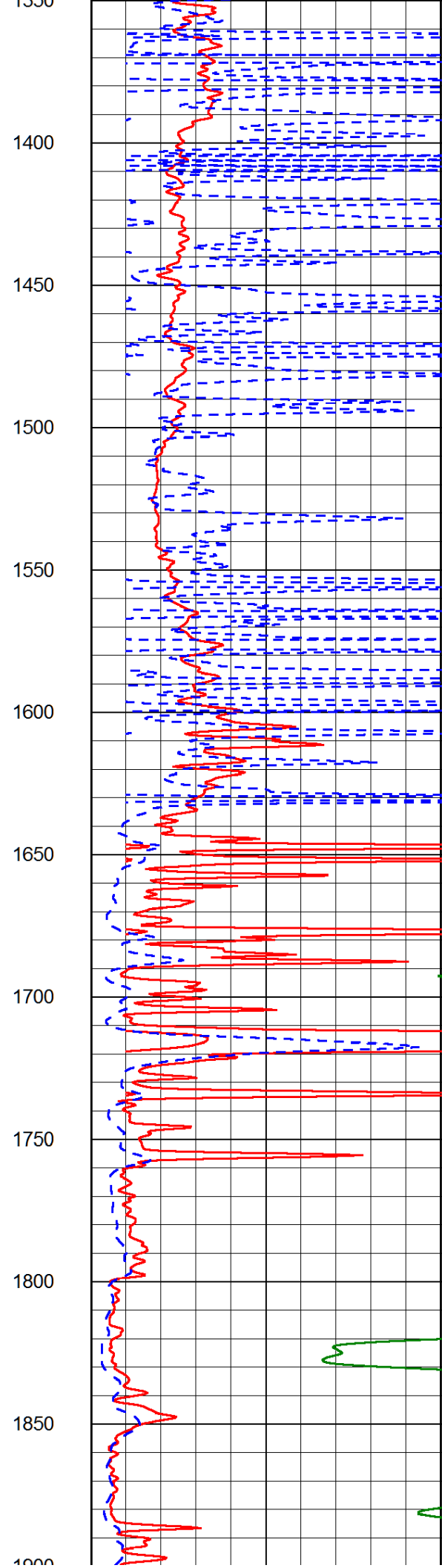
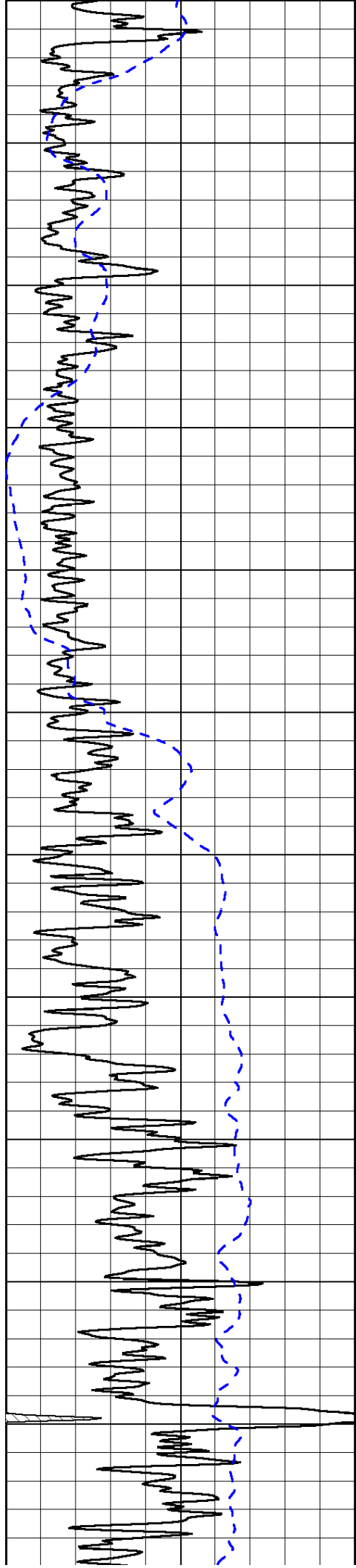
Thank you for using Log-Tech, Inc.  
(785) 625-3858  
  
Susank,  
1/2 East, South into

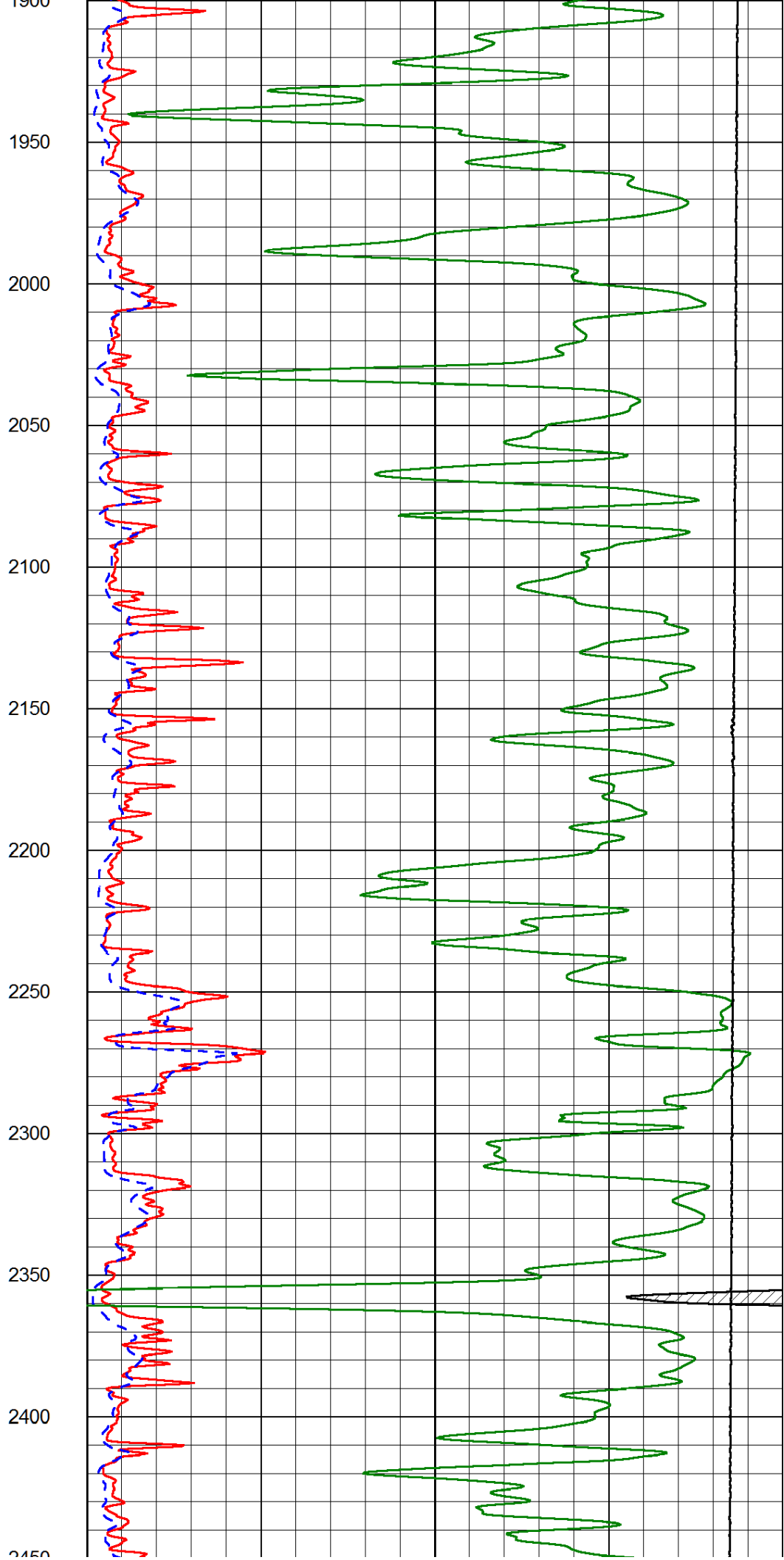
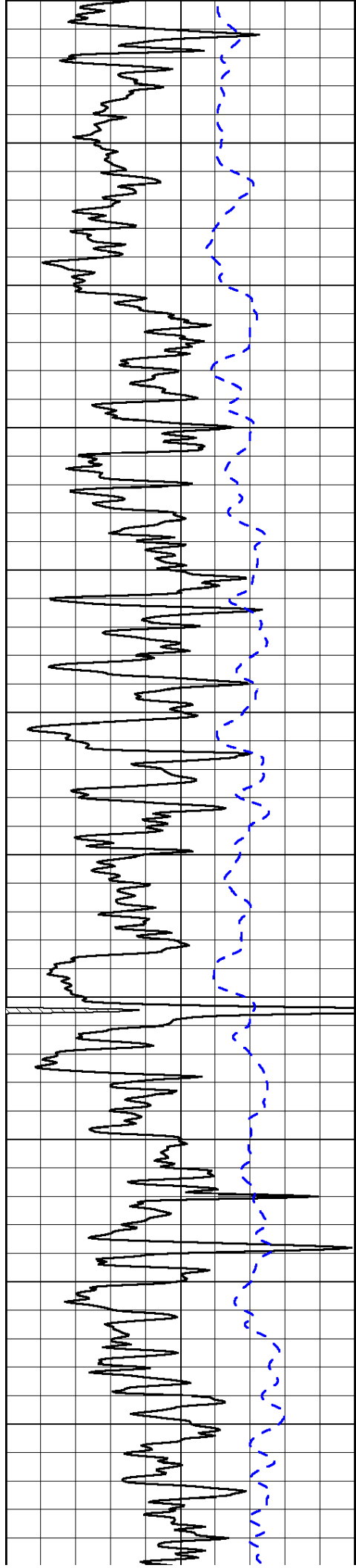
0	Gamma Ray (GAPI)	150
-200	SP (mV)	0

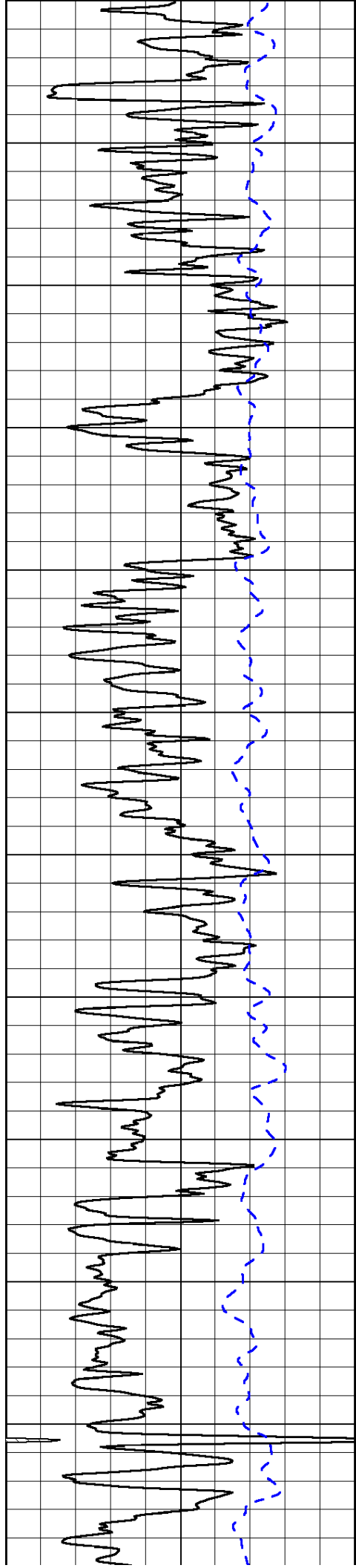
0	Shallow Resistivity (Ohm-m)	50
0	Deep Resistivity (Ohm-m)	50
1000	Conductivity (Ohm-m)	
15000	Line Tension (lb)	
50	Shallow Resistivity (Ohm-m)	500
50	Deep Resistivity (Ohm-m)	500



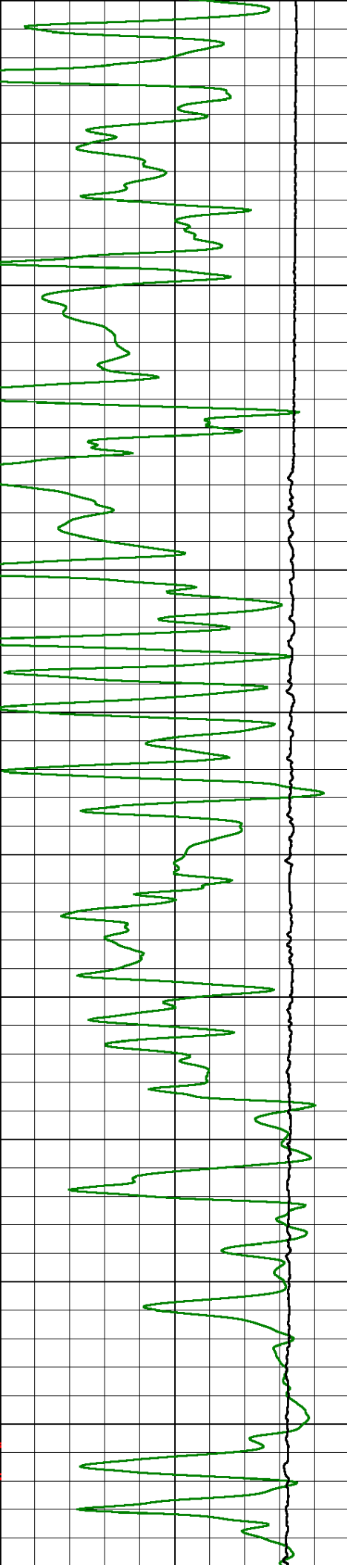
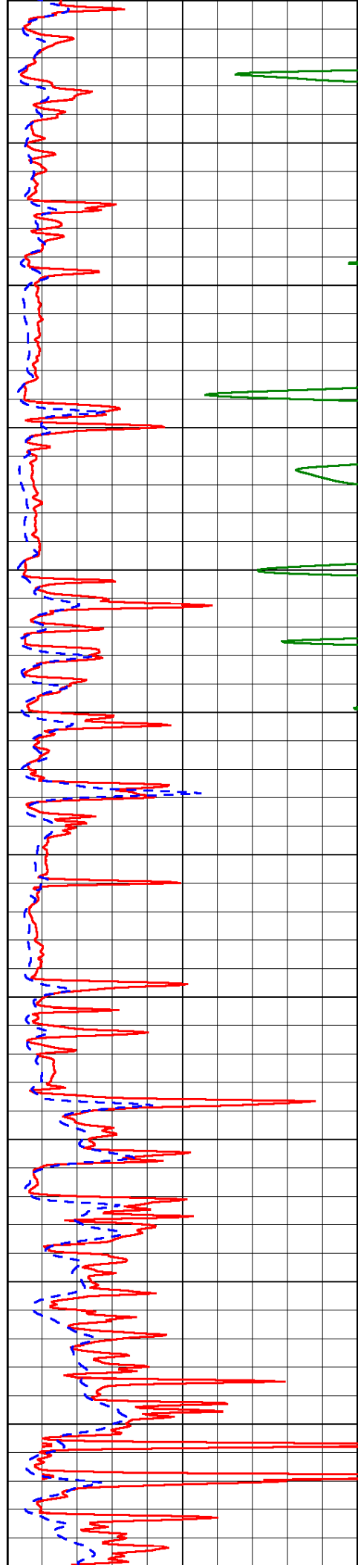


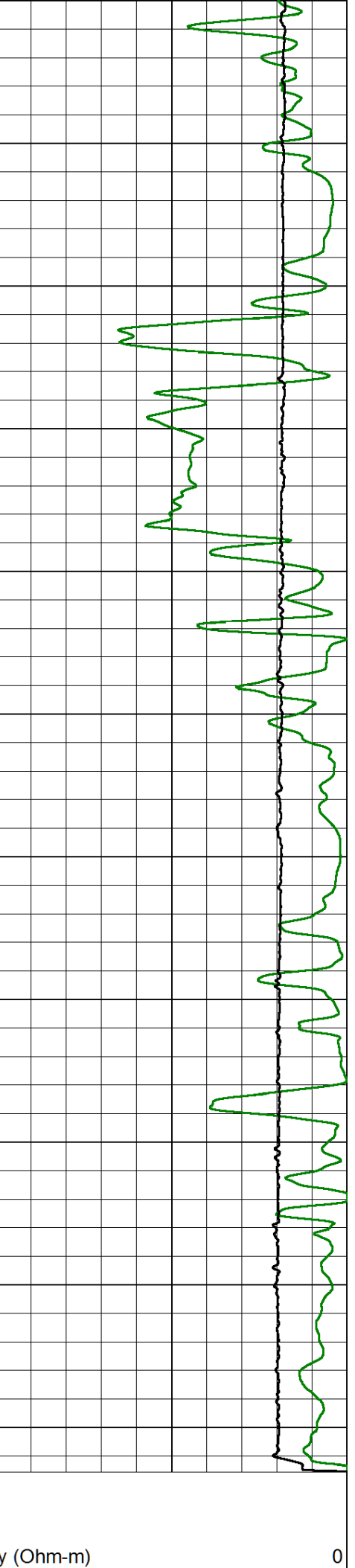
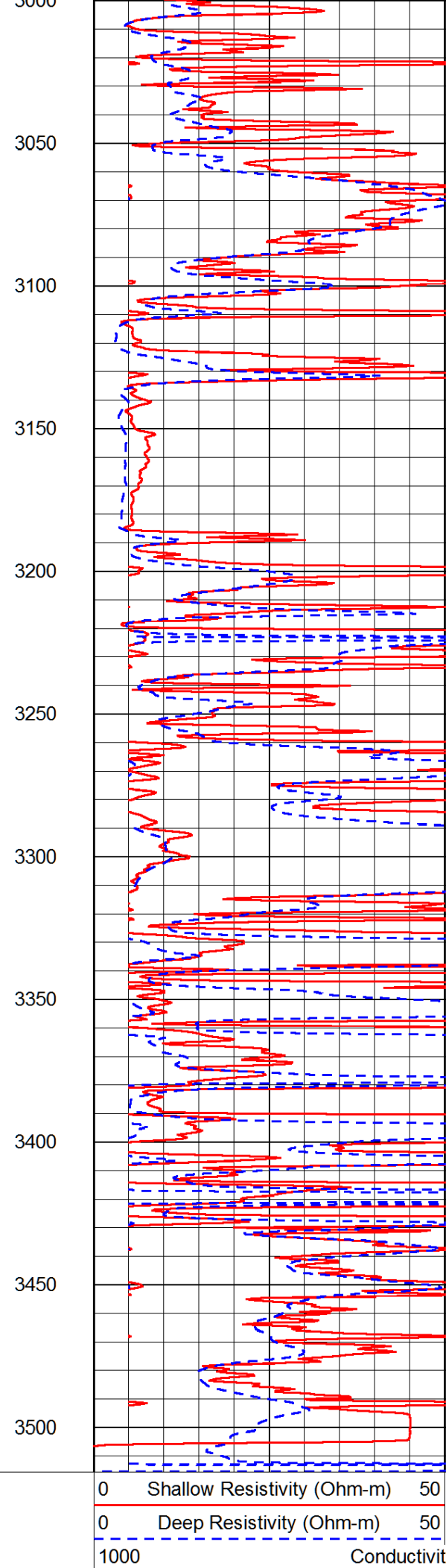
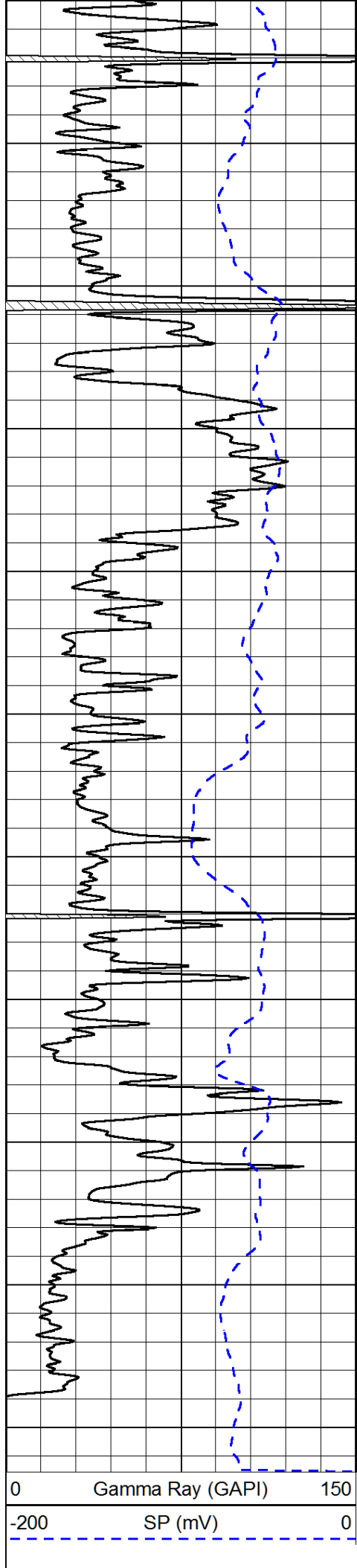






2450  
2500  
2550  
2600  
2650  
2700  
2750  
2800  
2850  
2900  
2950  
3000





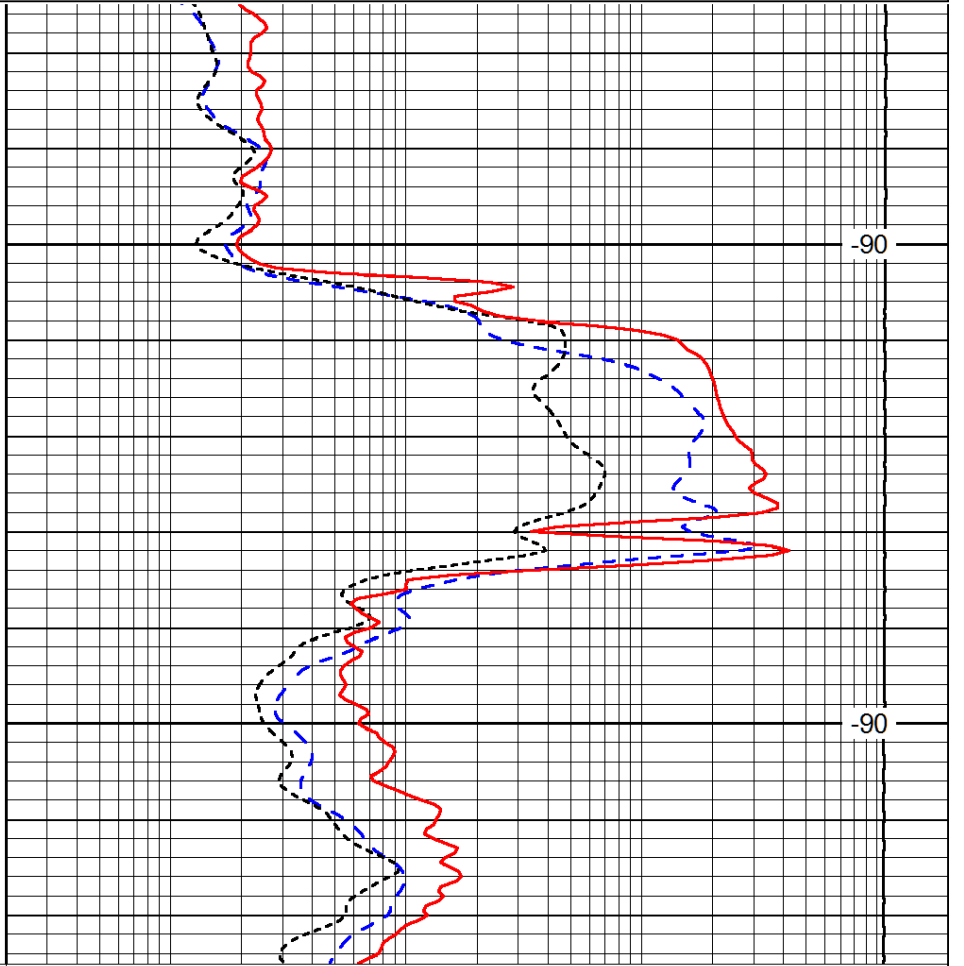
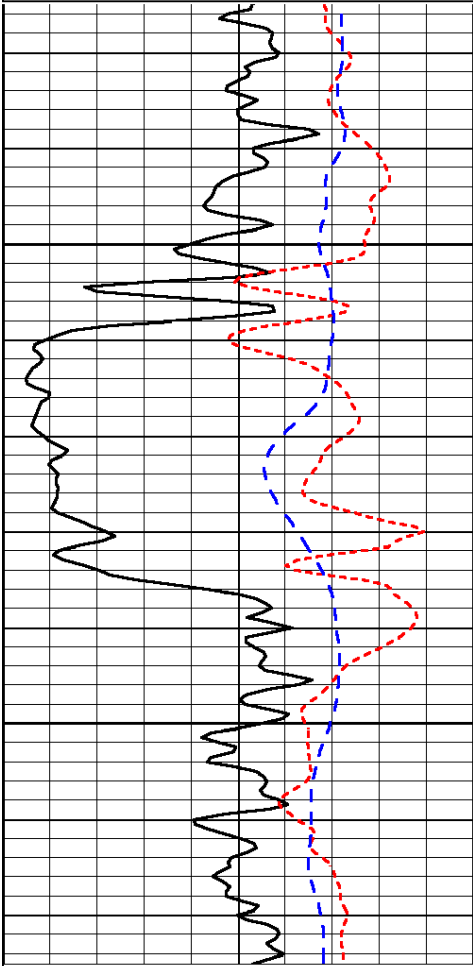
15000	Line Tension (lb)		0
Shallow Resistivity			
50	(Ohm-m)	500	
50	Deep Resistivity (Ohm-m)	500	

Database File: cg\_031014hd.db  
 Dataset Pathname: dil/cgstck  
 Presentation Format: dil  
 Dataset Creation: Tue Mar 11 05:15:20 2014  
 Charted by: Depth in Feet scaled 1:240

0	Gamma Ray (GAPI)	150
-160	RXO/RT	40
-200	SP (mV)	0

0.2	Deep Resistivity (Ohm-m)	2000
0.2	Medium Resistivity (Ohm-m)	2000
0.2	Shallow Resistivity (Ohm-m)	2000
10000	Line Tension (lb)	0

LSPD  
(ft/min)



0	Gamma Ray (GAPI)	150
-160	RXO/RT	40
-200	SP (mV)	0

0.2	Deep Resistivity (Ohm-m)	2000
0.2	Medium Resistivity (Ohm-m)	2000
0.2	Shallow Resistivity (Ohm-m)	2000
10000	Line Tension (lb)	0

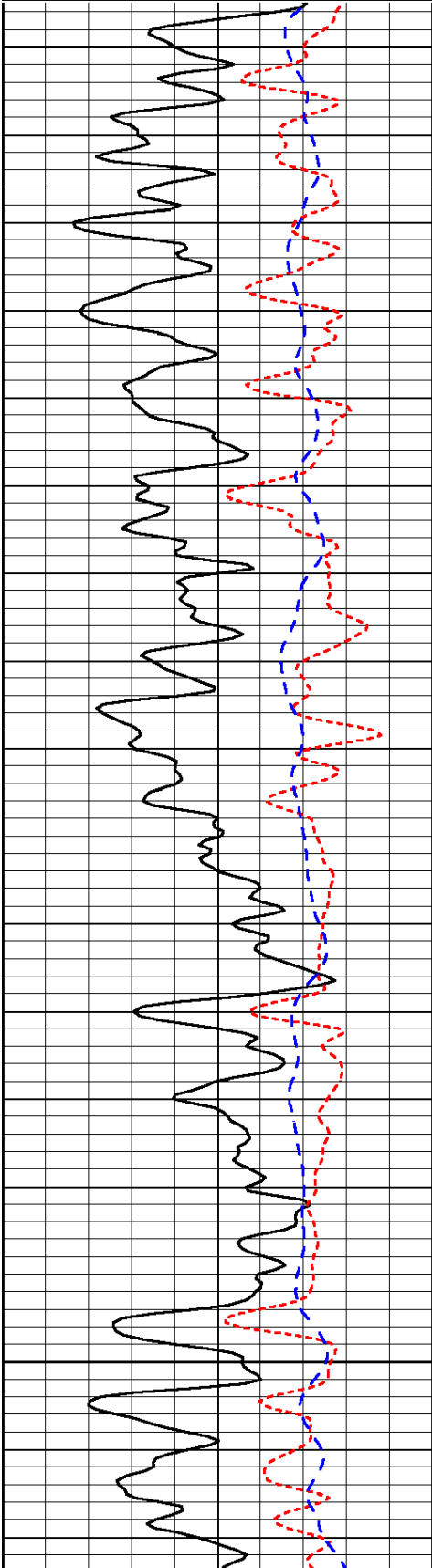
LSPD  
(ft/min)

Database File: cg\_031014hd.db  
 Dataset Pathname: dil/cgstck

0	Gamma Ray (GAPI)	150
-160	RXO/RT	40
-200	SP (mV)	0

0.2	Deep Resistivity (Ohm-m)	2000
0.2	Medium Resistivity (Ohm-m)	2000
0.2	Shallow Resistivity (Ohm-m)	2000
10000	Line Tension (lb)	0

LSPD  
(ft/min)

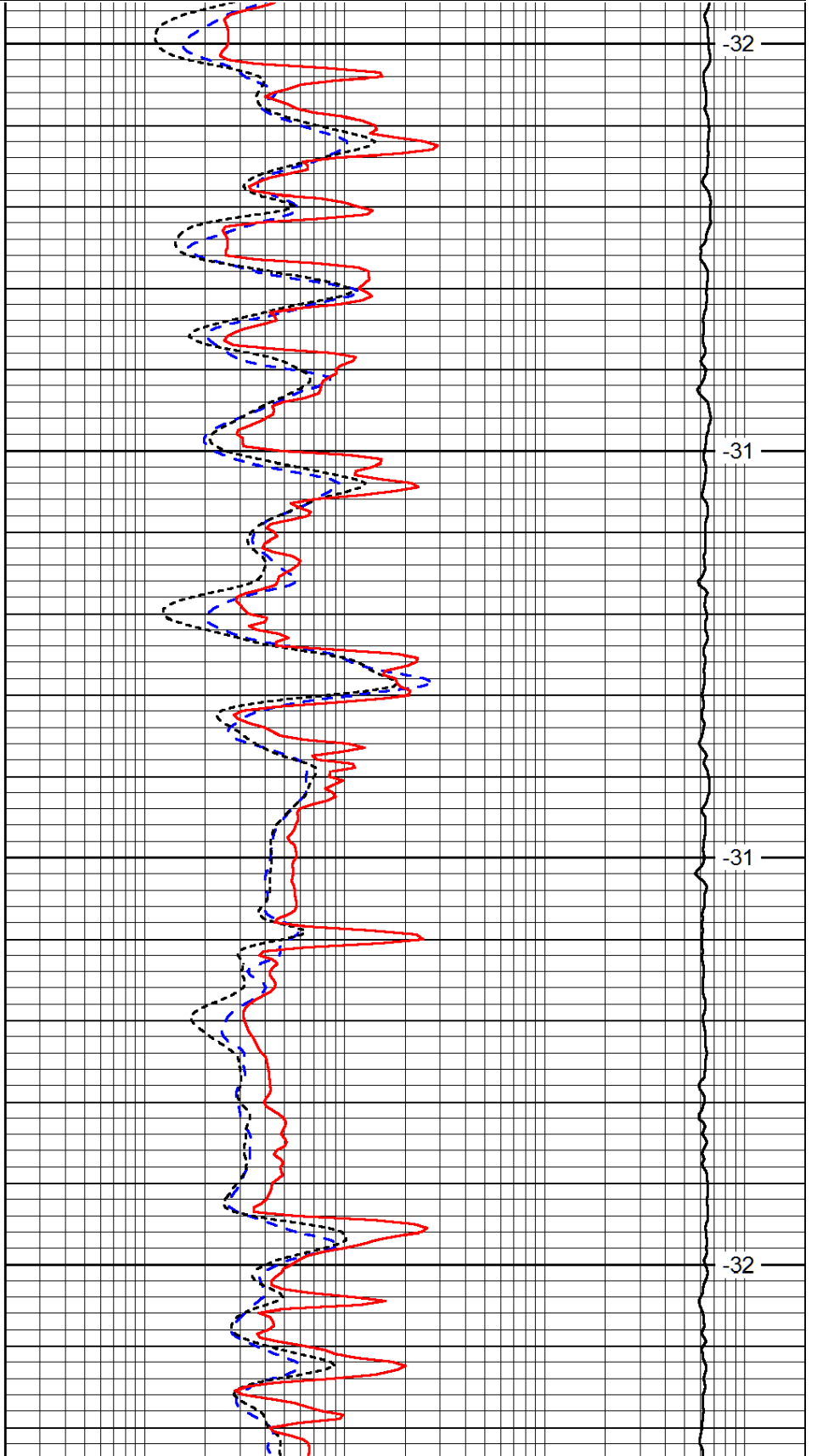


2650

2700

2750

2800

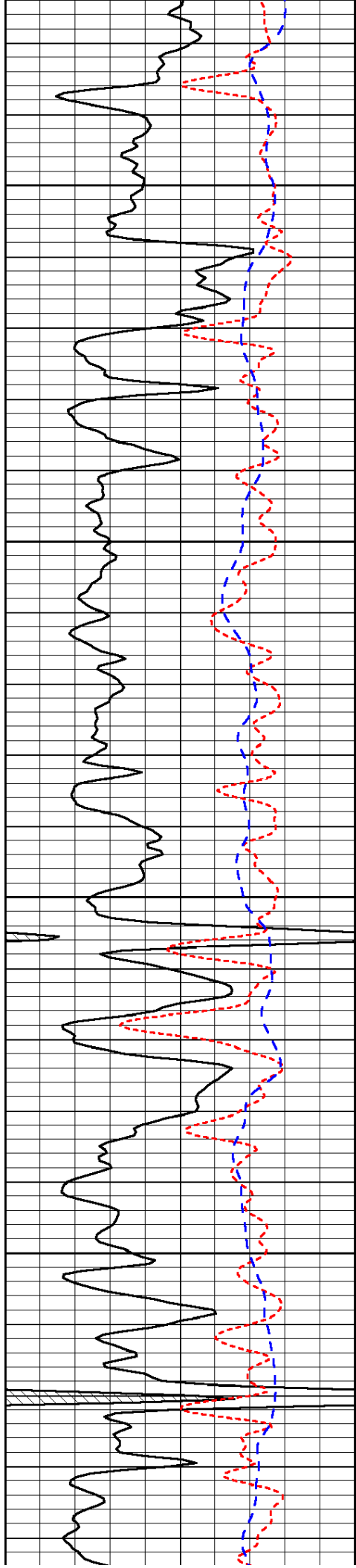


-32

-31

-31

-32

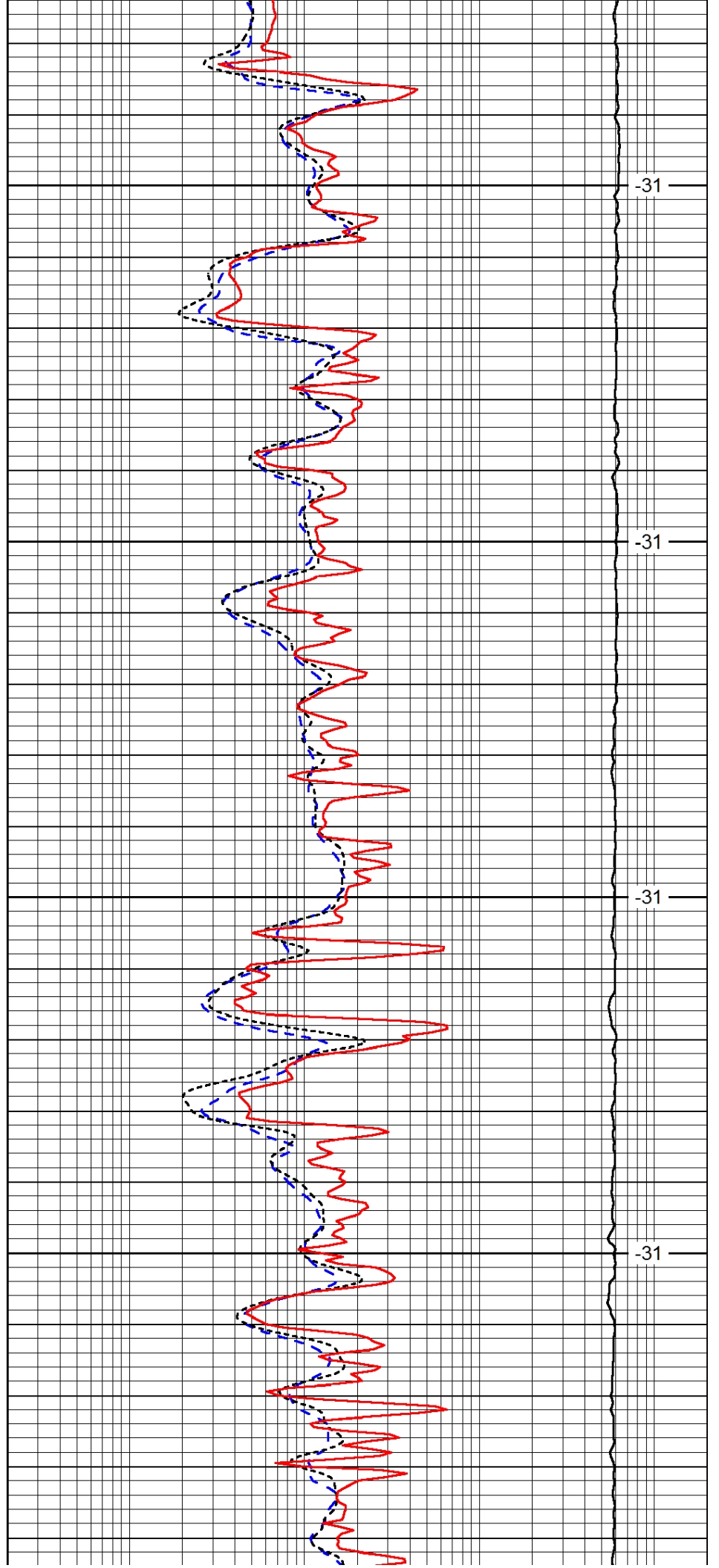


2850

2900

2950

3000

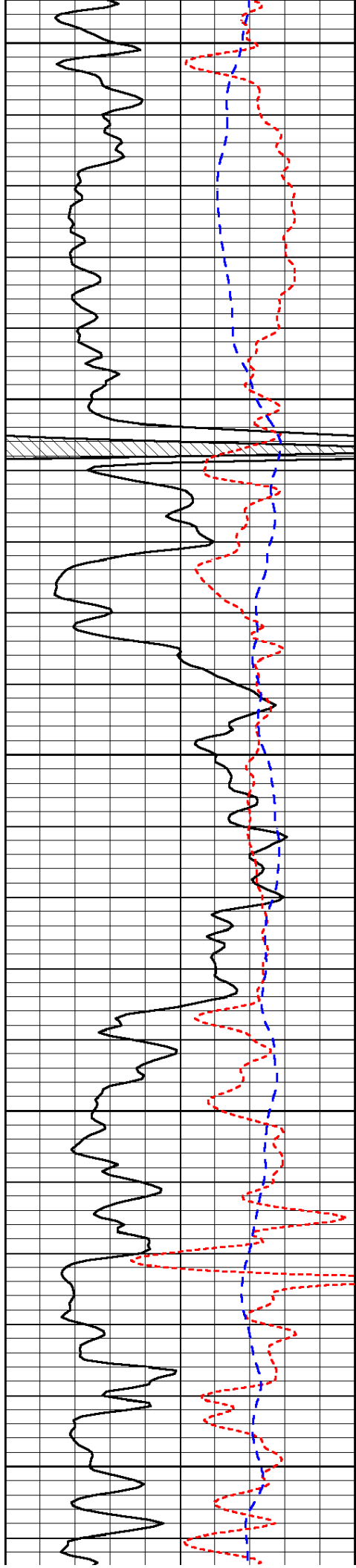


-31

-31

-31

-31



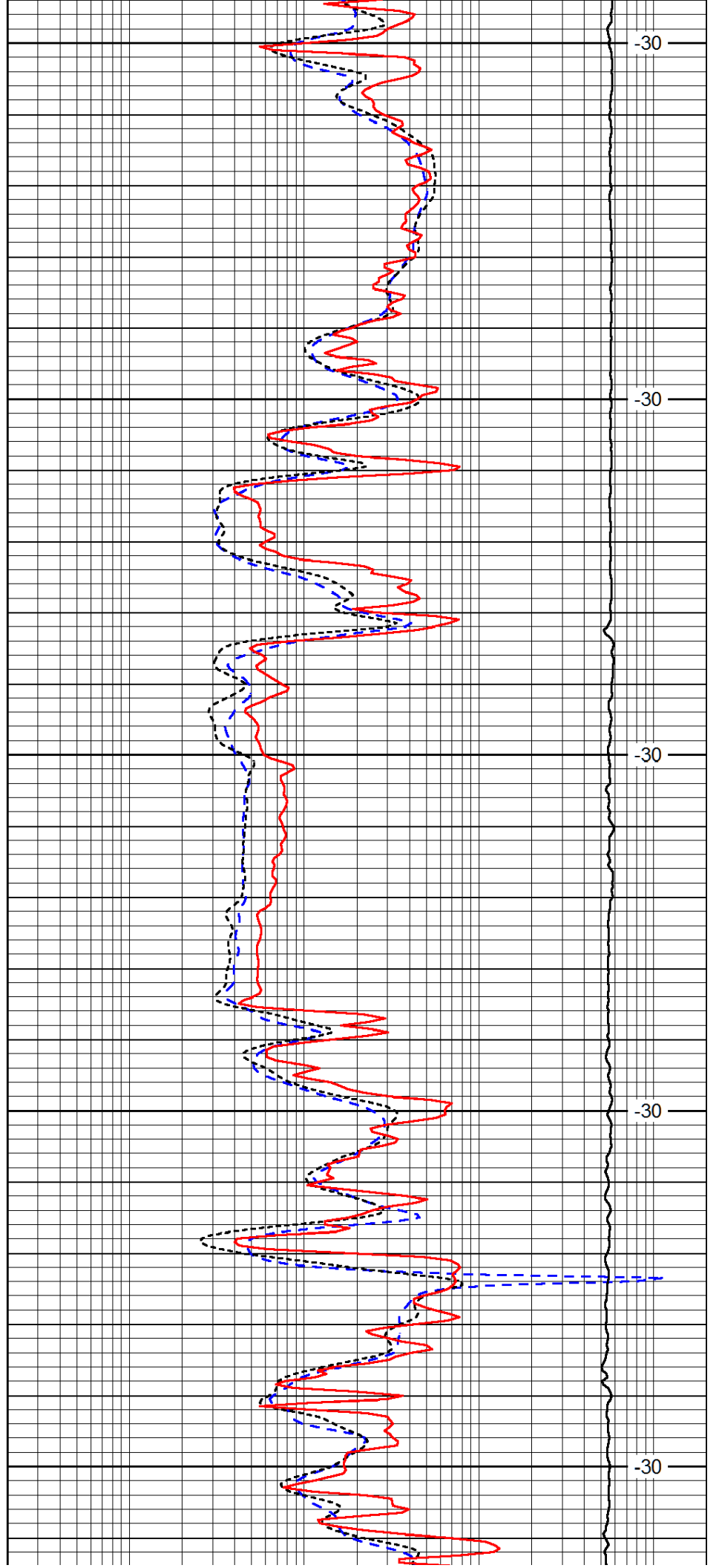
3050

3100

3150

3200

3250



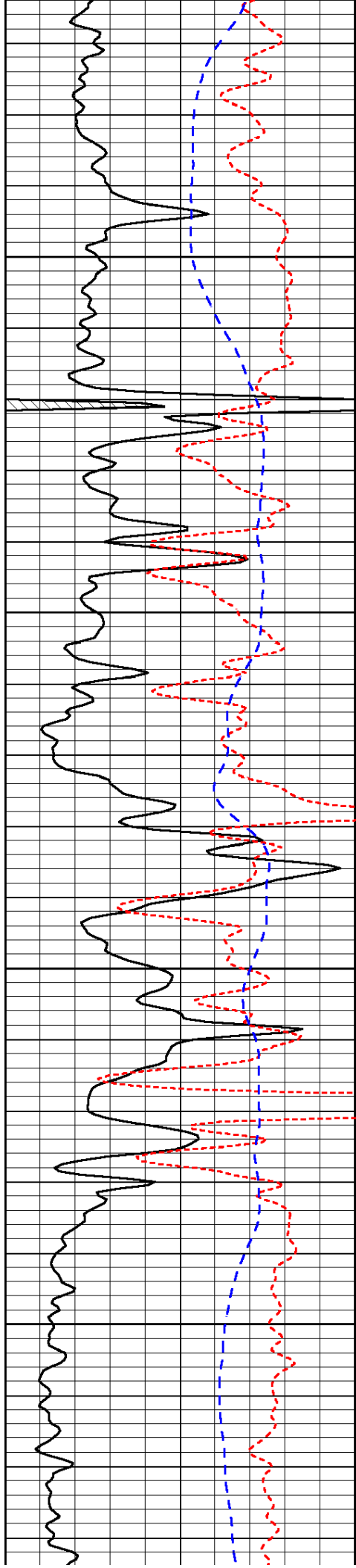
-30

-30

-30

-30

-30

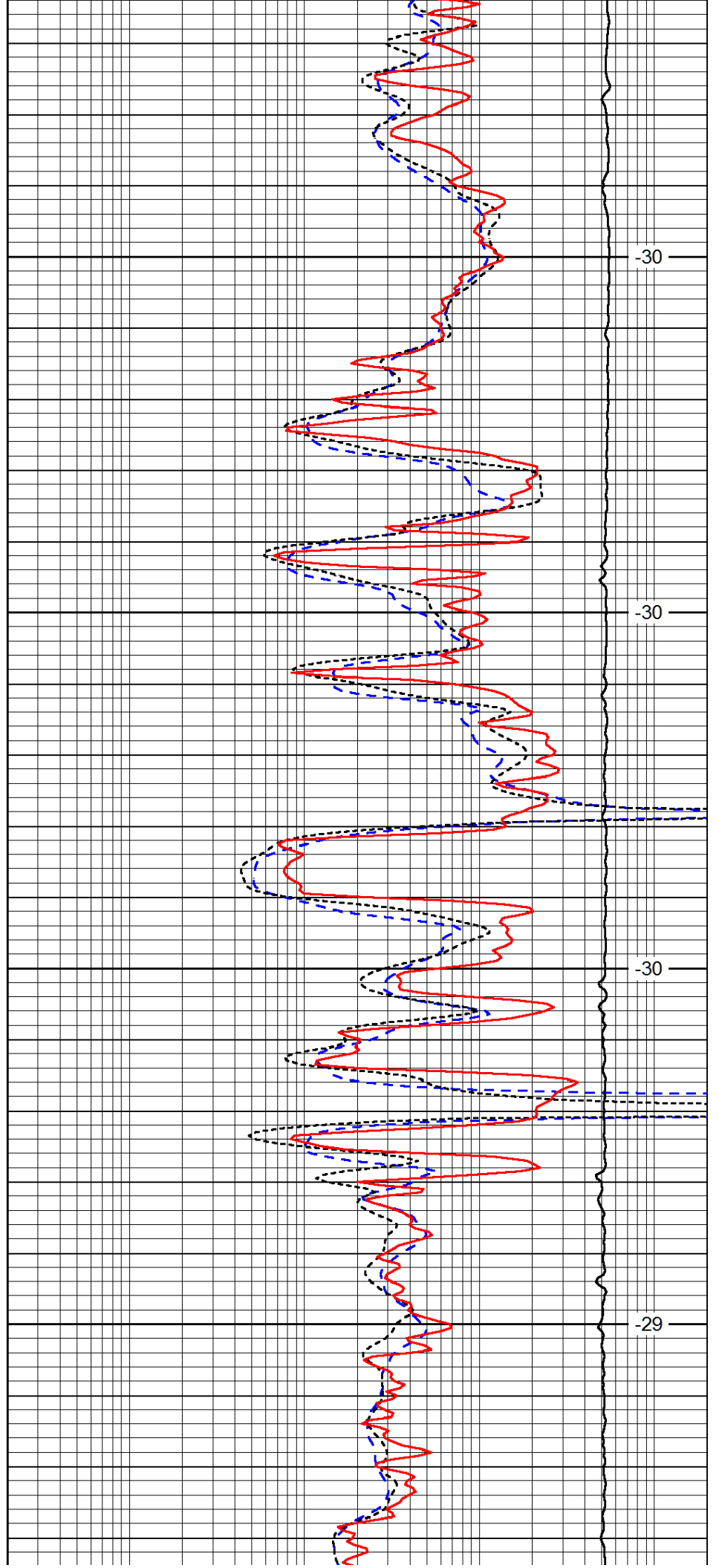


3300

3350

3400

3450

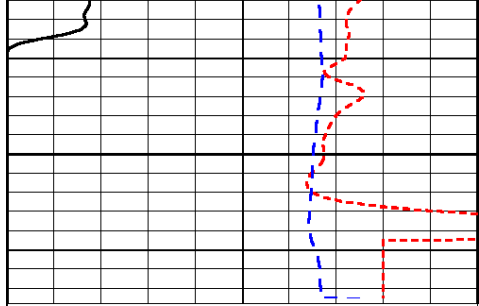


-30

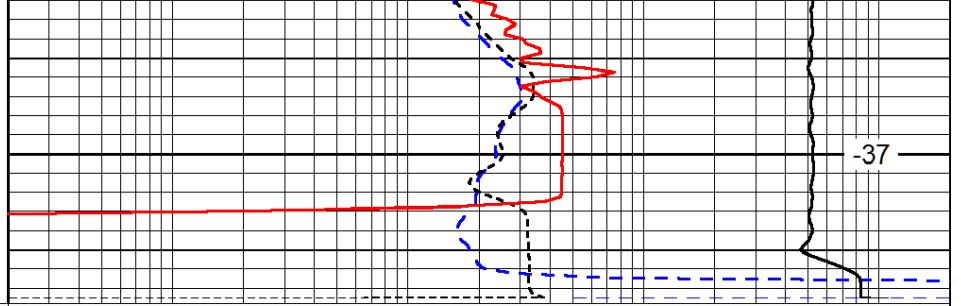
-30

-30

-29



3500



-37

0	Gamma Ray (GAPI)	150
-160	RXO/RT	40
-200	SP (mV)	0

0.2	Deep Resistivity (Ohm-m)	2000
0.2	Medium Resistivity (Ohm-m)	2000
0.2	Shallow Resistivity (Ohm-m)	2000
10000	Line Tension (lb)	0

LSPD  
(ft/min)