



Pioneer Energy Services

Microresistivity Log

API No. 15-009-20282-00-01	Company C G Oil, Inc. Well JMR #1 Field Trapp County Barton State Kansas Location 4950' FSL & 2310' FEL Sec: 28 Twp: 16S Rge: 13W	Permanent Datum Ground Level Elevation 1968 Log Measured From Kelly Bushing 10 Ft. Above Perm. Datum Drilling Measured From Kelly Bushing Other Services CNL/CDL DIL Elevation K.B. 1978 D.F. 1968 G.L. 1968
Date	3/10/2014	
Run Number	Two	
Depth Driller	3525	
Depth Logger	3510	
Bottom Logged Interval	3509	
Top Log Interval	2650	
Casing Driller	8.625 @ 370	
Casing Logger	374	
Bit Size	7.875	
Type Fluid in Hole	Chemical	
Salinity, ppm CL	9700	
Density / Viscosity	8.7 87	
pH / Fluid Loss	11.0 9.2	
Source of Sample	Flowline	
Rm @ Meas. Temp	0.32 @ 70	
Rmf @ Meas. Temp	0.24 @ 70	
Rmc @ Meas. Temp	0.43 @ 70	
Source of Rmf / Rmc	Charts	
Rm @ BHT	0.20 @ 113	
Operating Rig Time	4 Hours	
Max Rec. Temp. F	113	
Equipment Number	91	
Location	Hays	
Recorded By	D. Schmidt	
Witnessed By	Ron Schmidberger	

<<< Fold Here >>>

All interpretations are opinions based on inferences from electrical or other measurements and we cannot and do not guarantee the accuracy or correctness of any interpretation, and we shall not, except in the case of gross or willful negligence on our part, be liable or responsible for any loss, costs, damages, or expenses incurred or sustained by anyone resulting from any interpretation made by any of our officers, agents or employees. These interpretations are also subject to our general terms and conditions set out in our current Price Schedule.

Comments

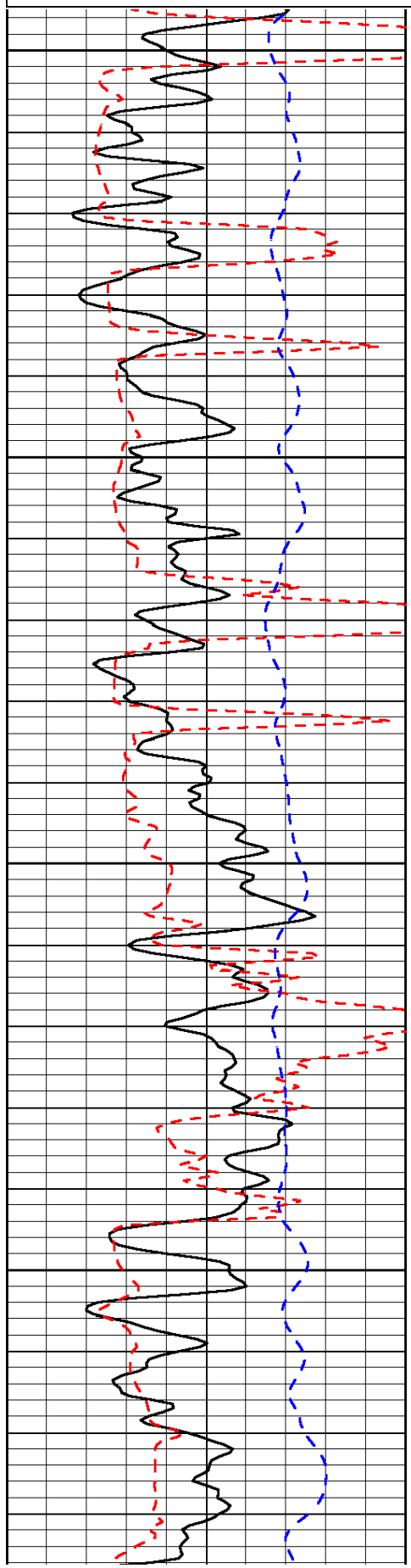
Thank you for using Log-Tech, Inc.
 (785) 625-3858

 Susank,
 1/2 East, South into

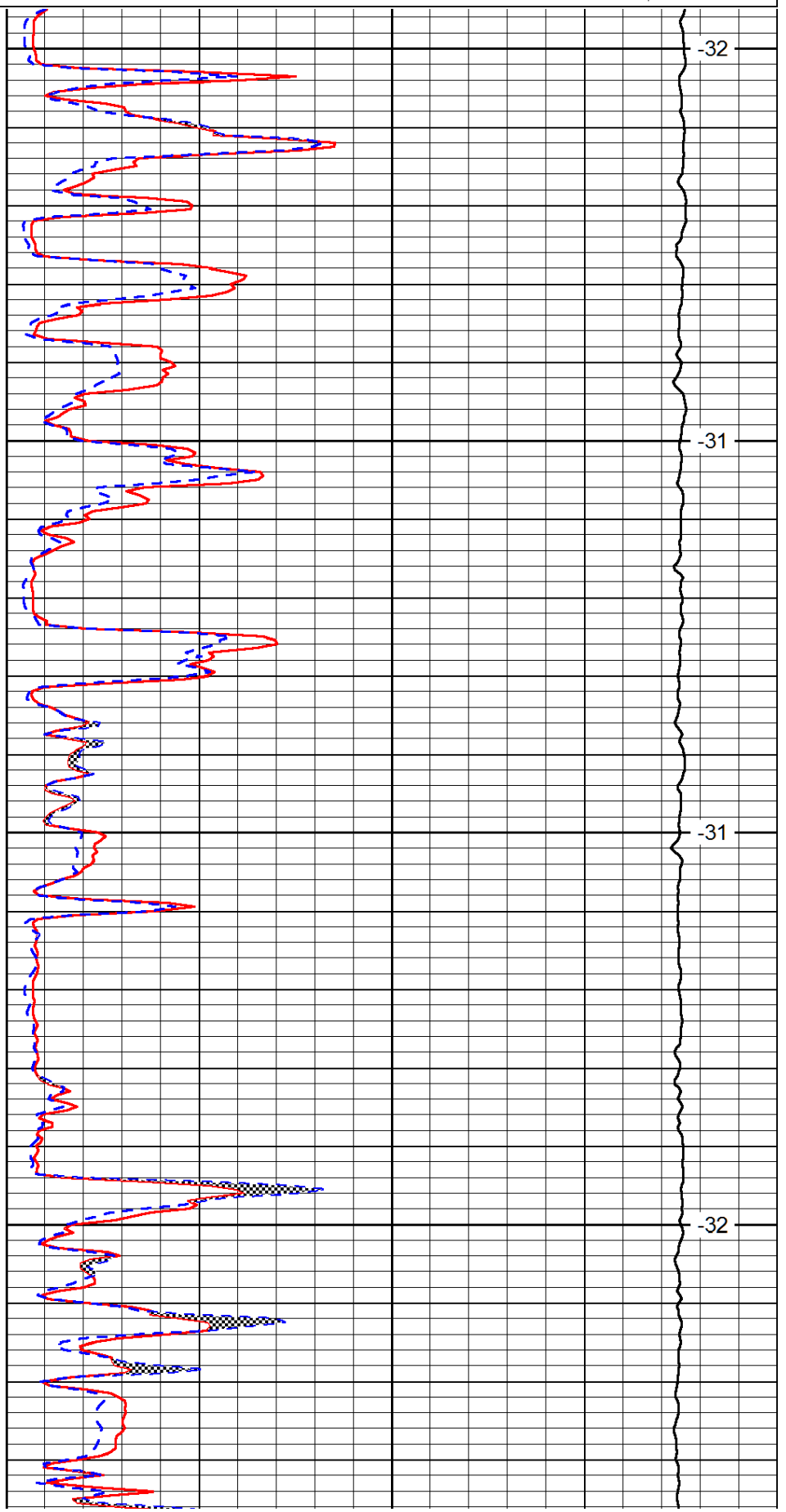
0	Gamma Ray (GAPI)	150
6	MCAL (in)	16
2.875	Mud Cake (in)	7.875
-200	SP (mV)	0

0	Micro Inverse 1 X 1 (Ohm-m)	40
0	Micro Normal 2" (Ohm-m)	40
10000	Line Weight (lb)	0

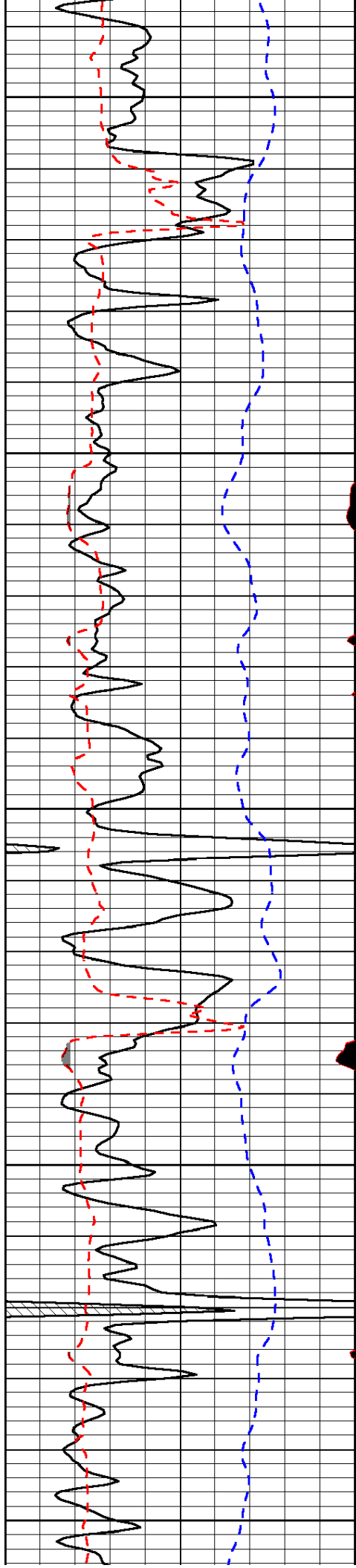
LSPD
(ft/min)



2650
2700
2750
2800



-32
-31
-31
-32



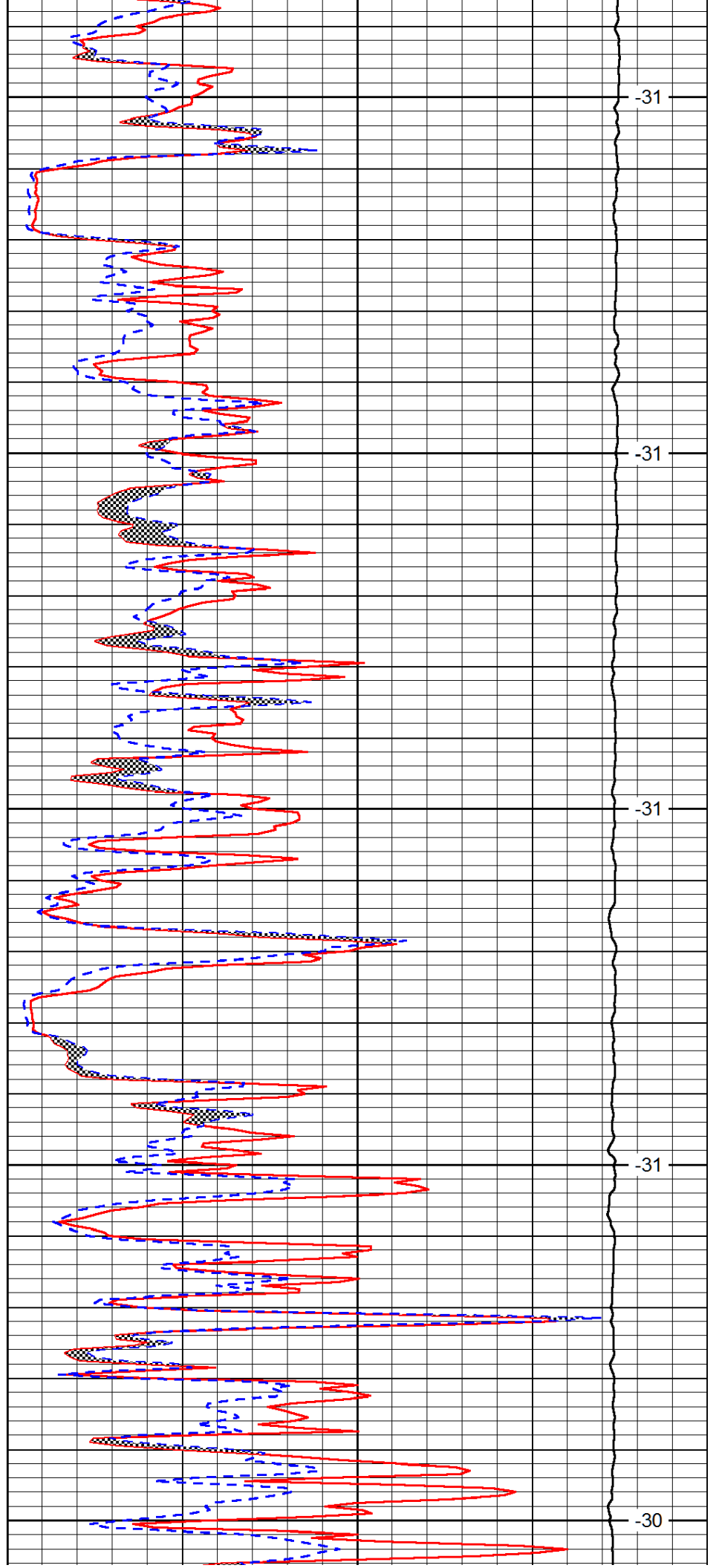
2850

2900

2950

3000

3050



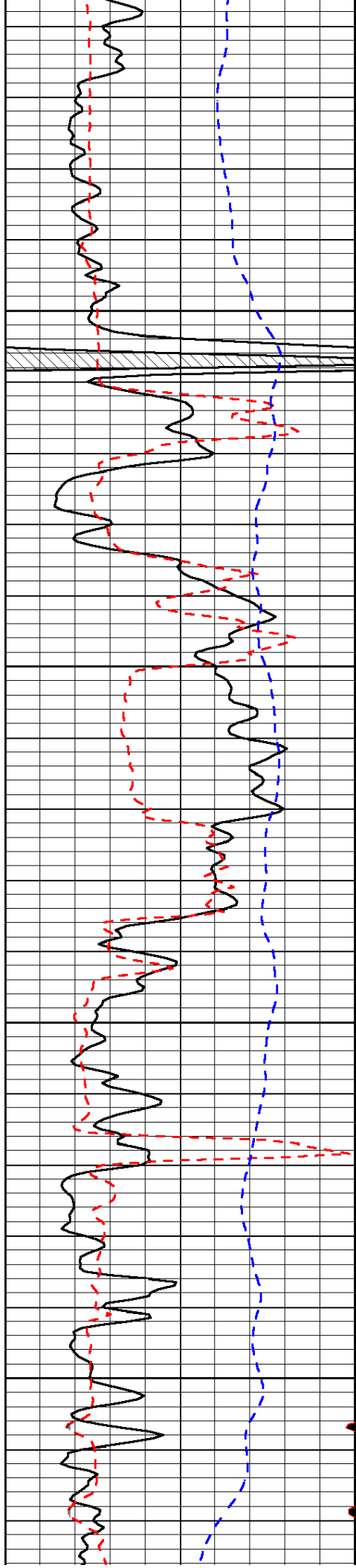
-31

-31

-31

-31

-30

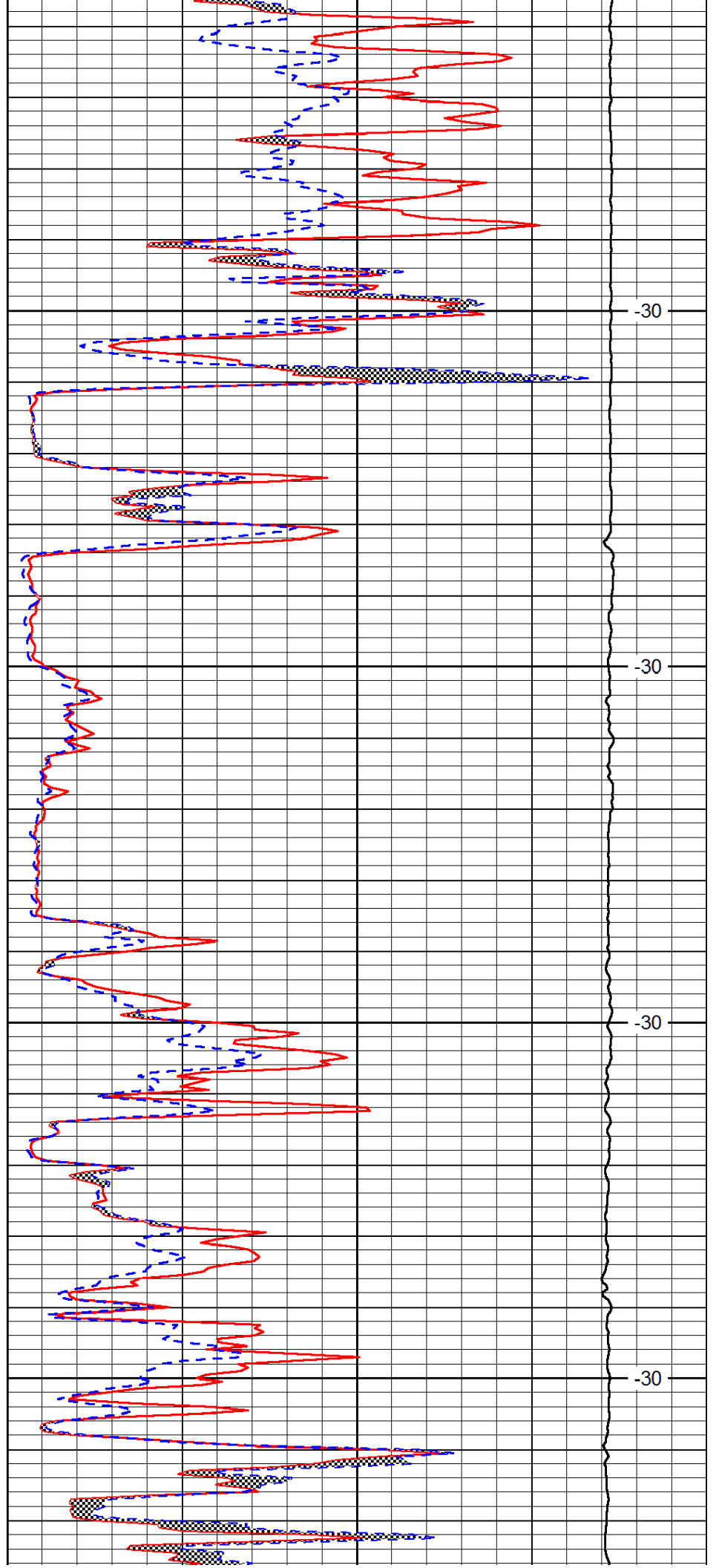


3100

3150

3200

3250

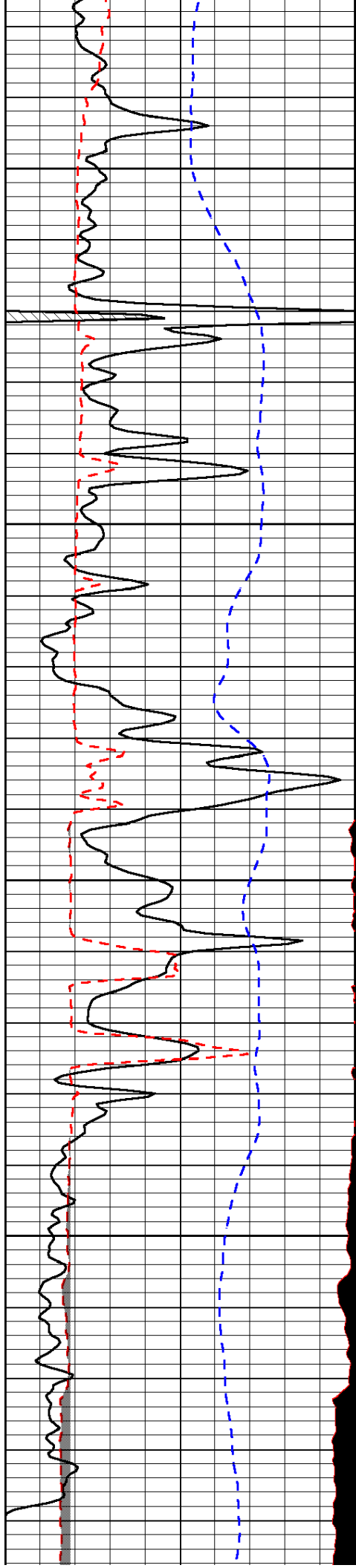


-30

-30

-30

-30

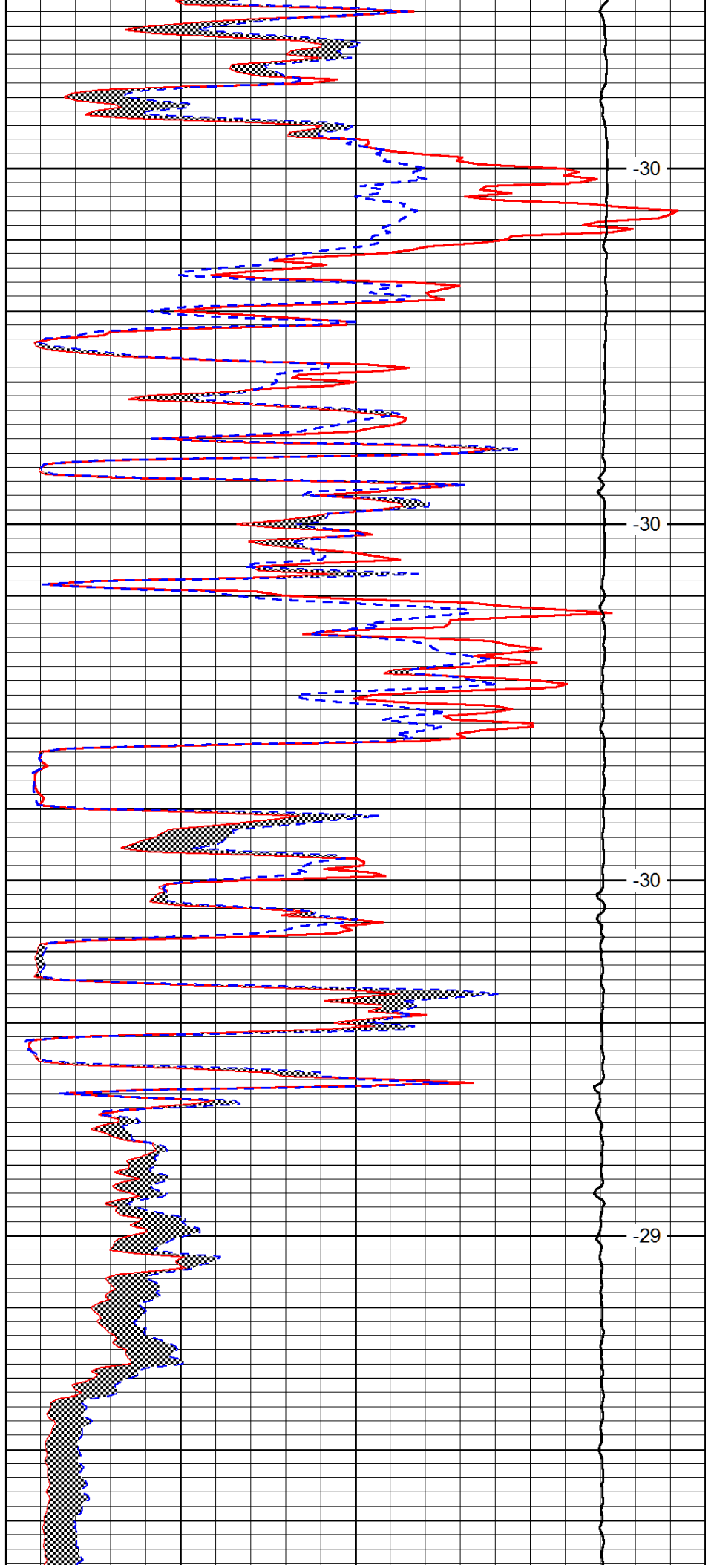


3300

3350

3400

3450

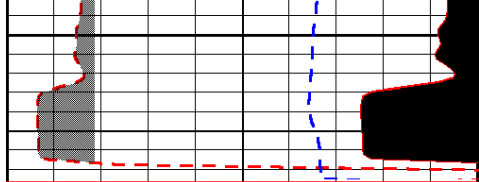


-30

-30

-30

-29



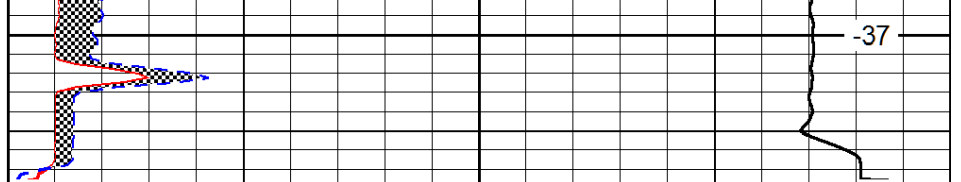
0	Gamma Ray (GAPI)	150
---	------------------	-----

6	MCAL (in)	16
---	-----------	----

2.875	Mud Cake (in)	7.875
-------	---------------	-------

-200	SP (mV)	0
------	---------	---

3500



0	Micro Inverse 1 X 1 (Ohm-m)	40
---	-----------------------------	----

0	Micro Normal 2" (Ohm-m)	40
---	-------------------------	----

10000	Line Weight (lb)	0
-------	------------------	---

LSPD (ft/min)
