



Pioneer Energy Services

Borehole Compensated Sonic Log

API No.	15-153-20974-00-00		
Company	Murfin Drilling Company, Inc.		
Well	Kacirek Trust #1-5		
Field	Wildcat		
County	Rawlins		
State	Kansas		
Location	2170' FNL & 330' FWL		
Sec: 5	Twp: 2S	Rge: 36W	Other Services CNL/CDL MEL/DIL
Permanent Datum	Ground Level	Elevation 3247	Elevation
Log Measured From	Kelly Bushing	5 Ft. Above Perm. Datum	K.B. 3252
Drilling Measured From	Kelly Bushing		D.F. 3247
Date	1/18/2014		

Run Number	Two		
Type Log	BHC Sonic		
Depth Driller	4945		
Depth Logger	4935		
Bottom Logged Interval	4924		
Top Logged Interval	250		
Type Fluid In Hole	Chemical		
Salinity, PPM CL	1000		
Density	9.3		
Level	Full		
Max. Rec. Temp. F	127		
Operating Rig Time	5 Hours		
Equipment -- Location	91 Hays		
Recorded By	D. Schmidt		
Witnessed By	Charles Schmatz		

Borehole Record				Casing Record			
Run No.	Bit	From	To	Size	Wgt.	From	To
One	12.25	00	254	8.625	23#	00	254
Two	7.875	254	TD				

<<< Fold Here >>>

All interpretations are opinions based on inferences from electrical or other measurements and we cannot and do not guarantee the accuracy or correctness of any interpretation, and we shall not, except in the case of gross or willful negligence on our part, be liable or responsible for any loss, costs, damages, or expenses incurred or sustained by anyone resulting from any interpretation made by any of our officers, agents or employees. These interpretations are also subject to our general terms and conditions set out in our current Price Schedule.

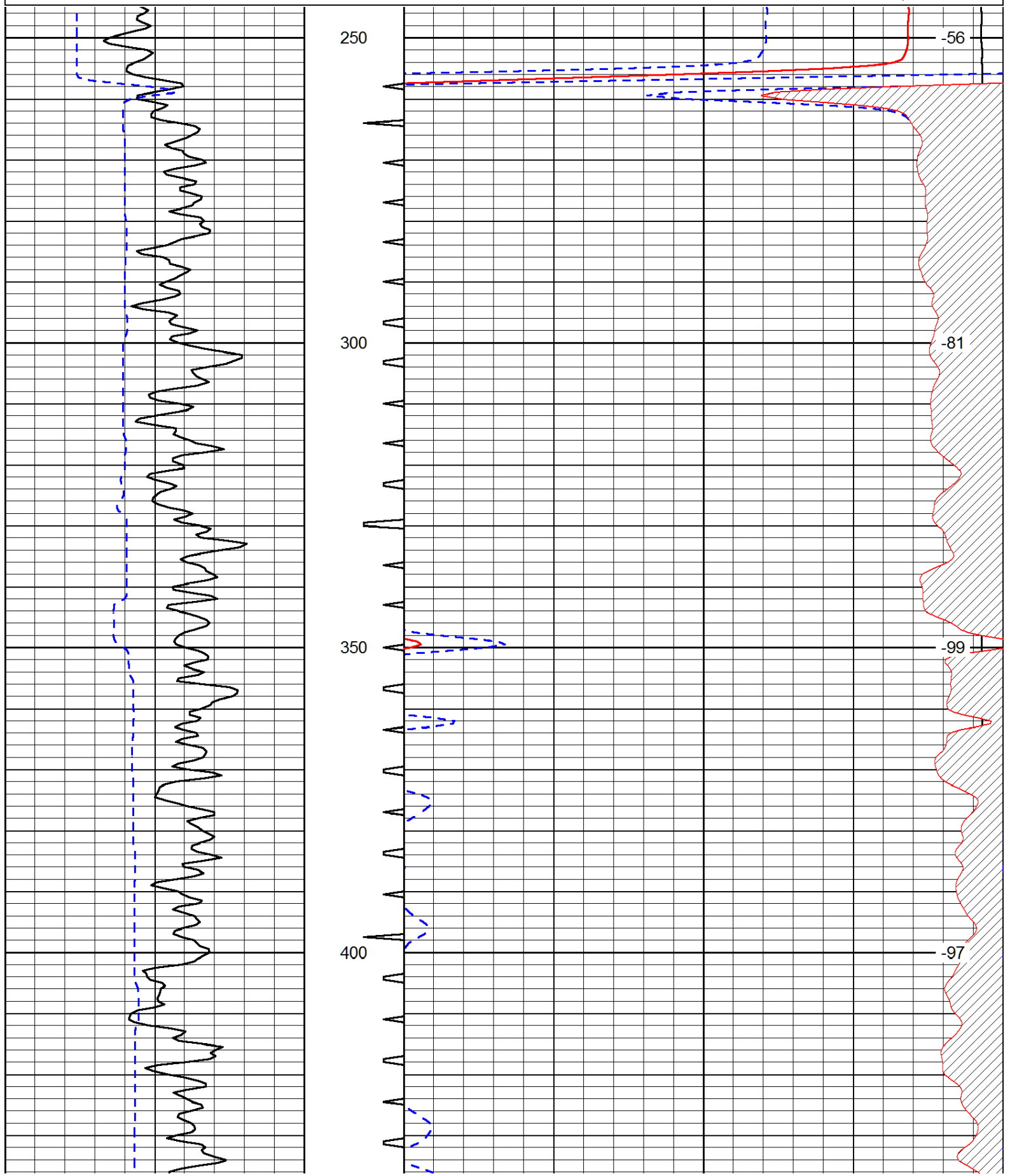
Comments

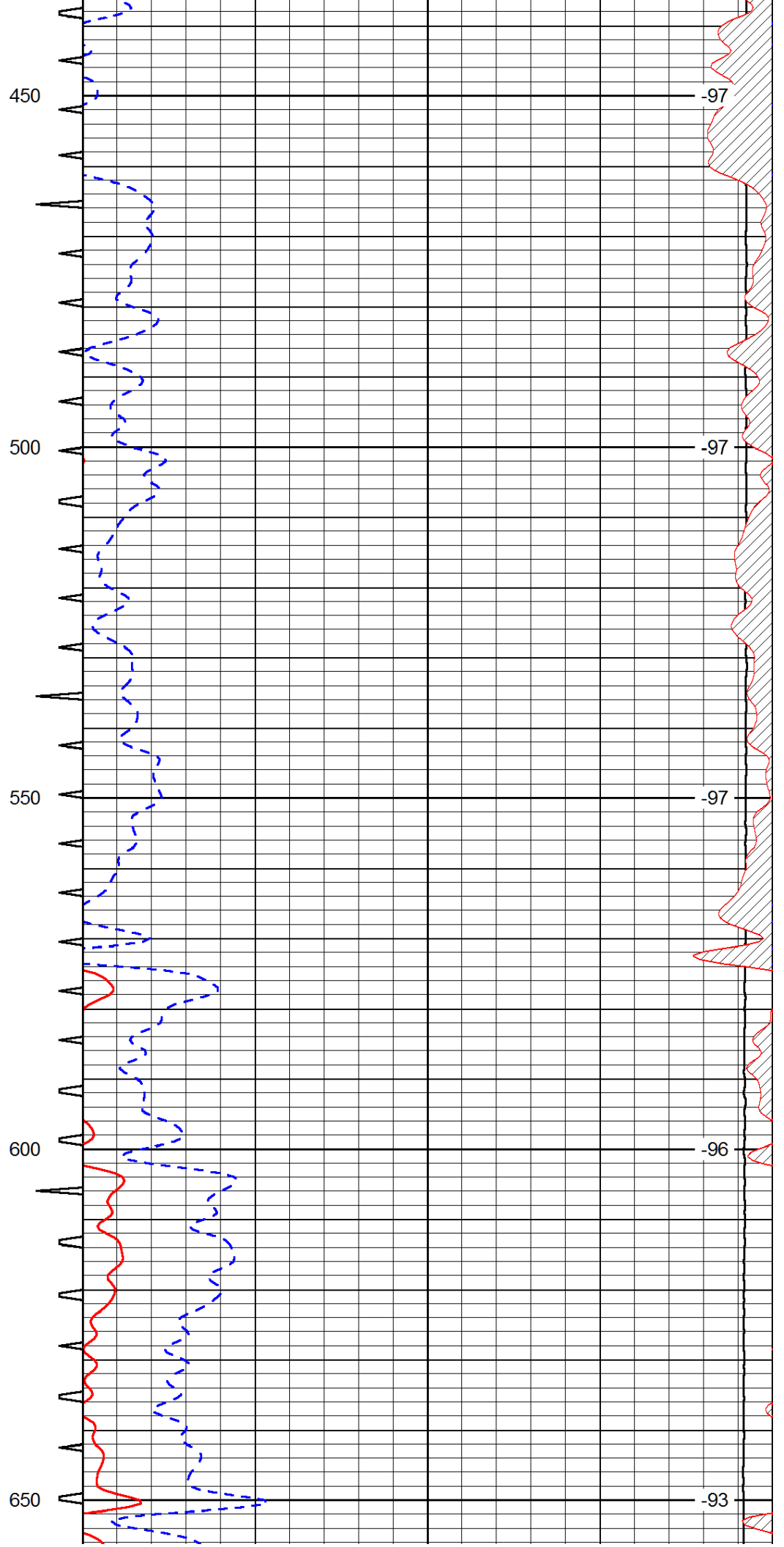
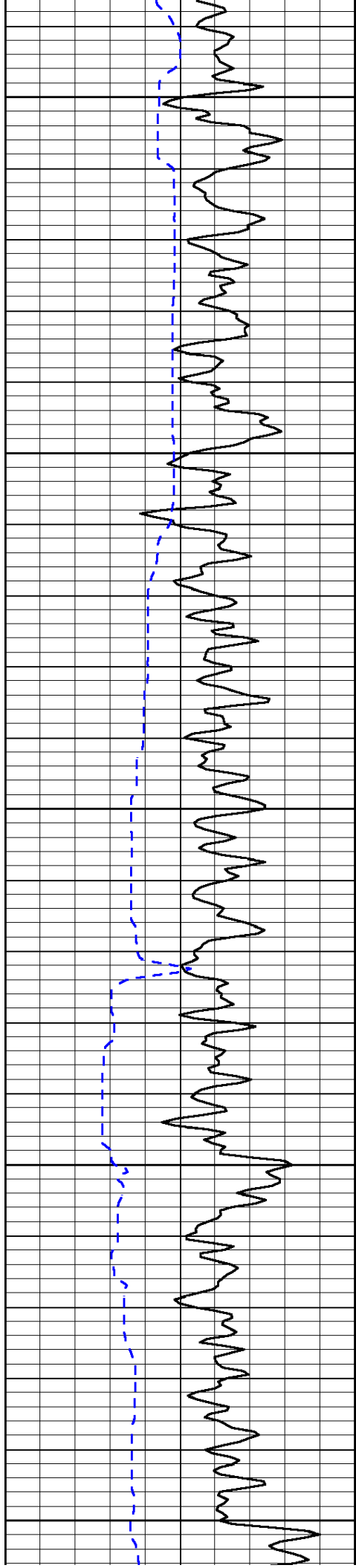
Thank you for using Log-Tech, Inc.
 (785) 625-3858

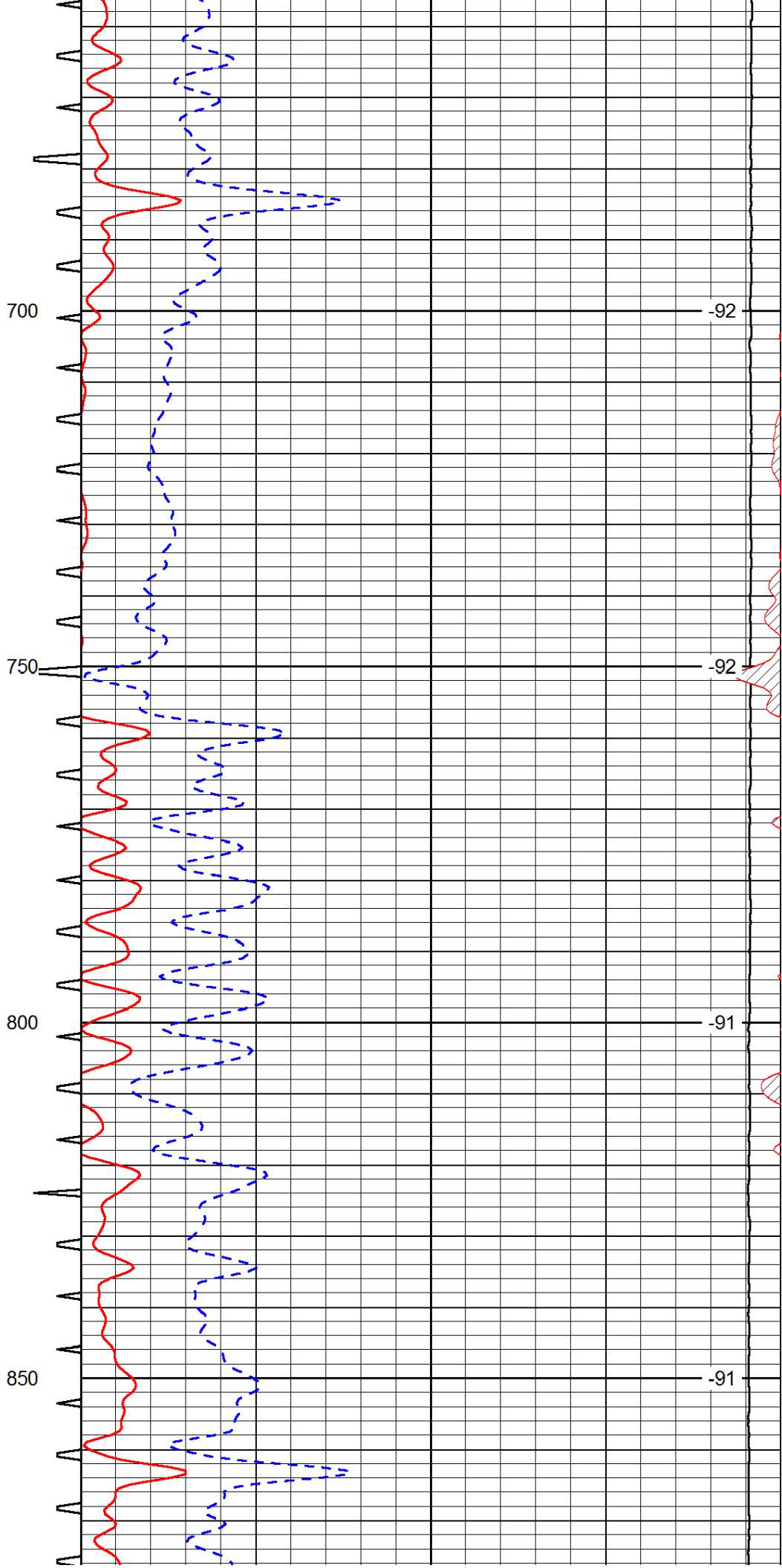
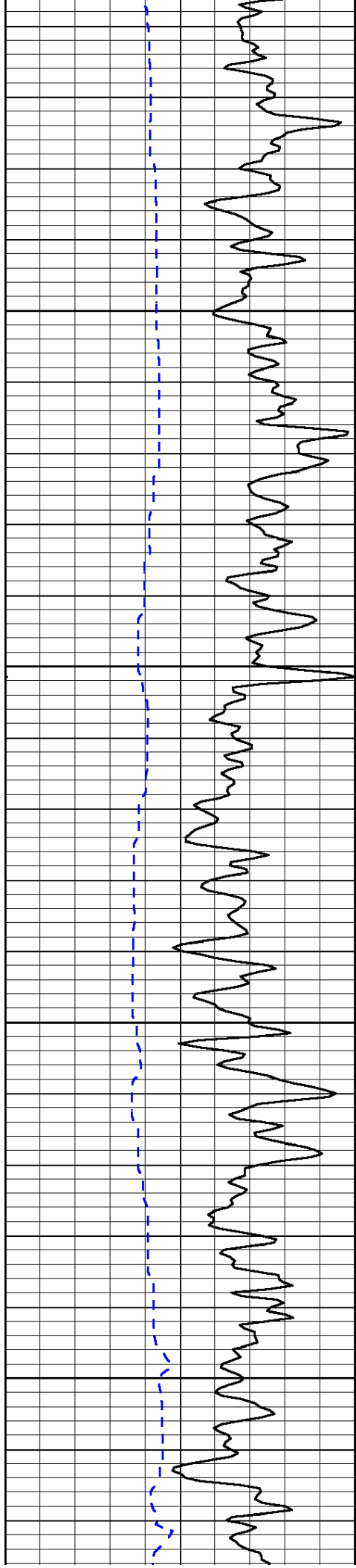
 McDonald,
 8 1/4 North, 1/2 West, 1/4 North,
 West & North to location

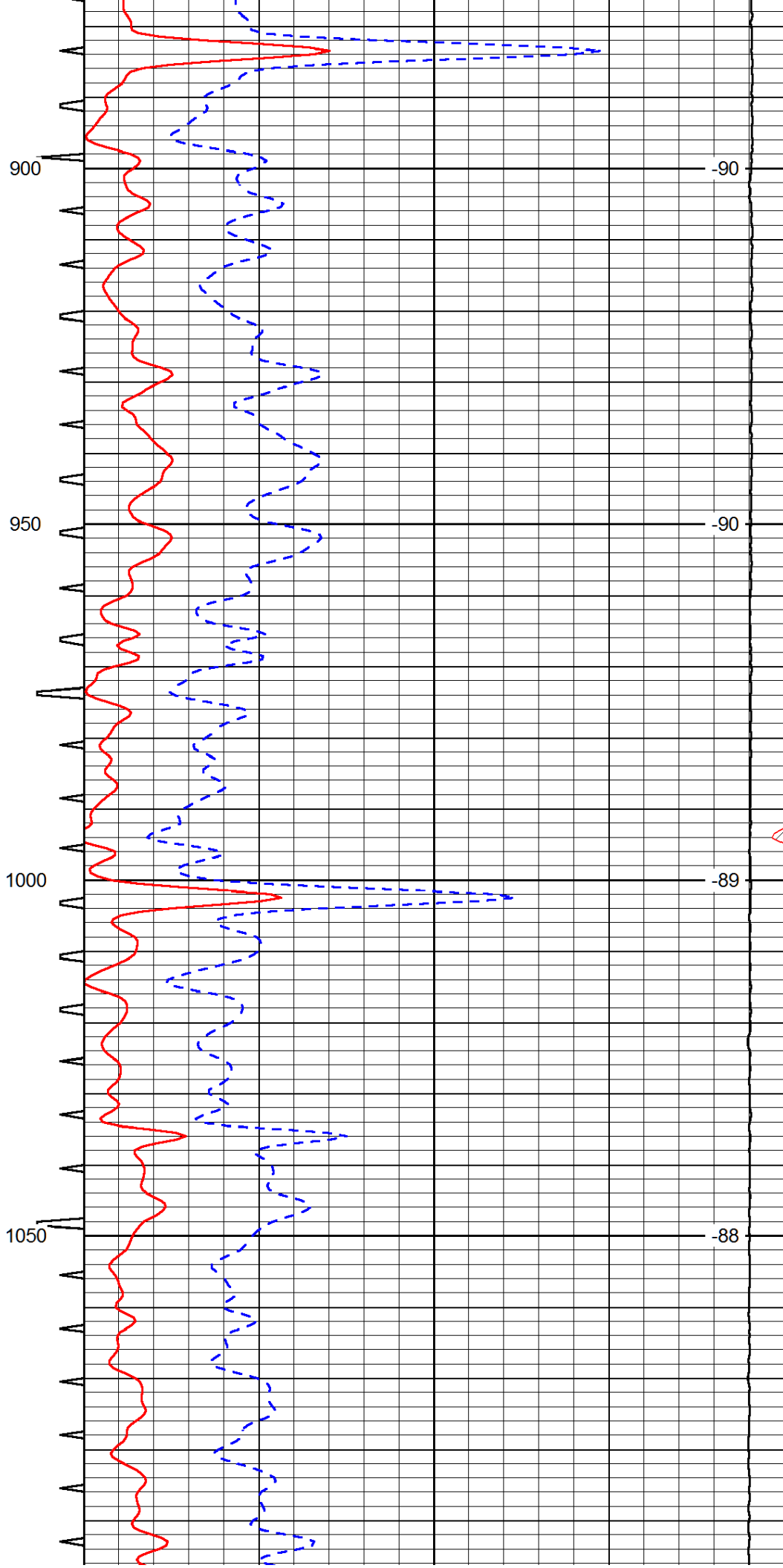
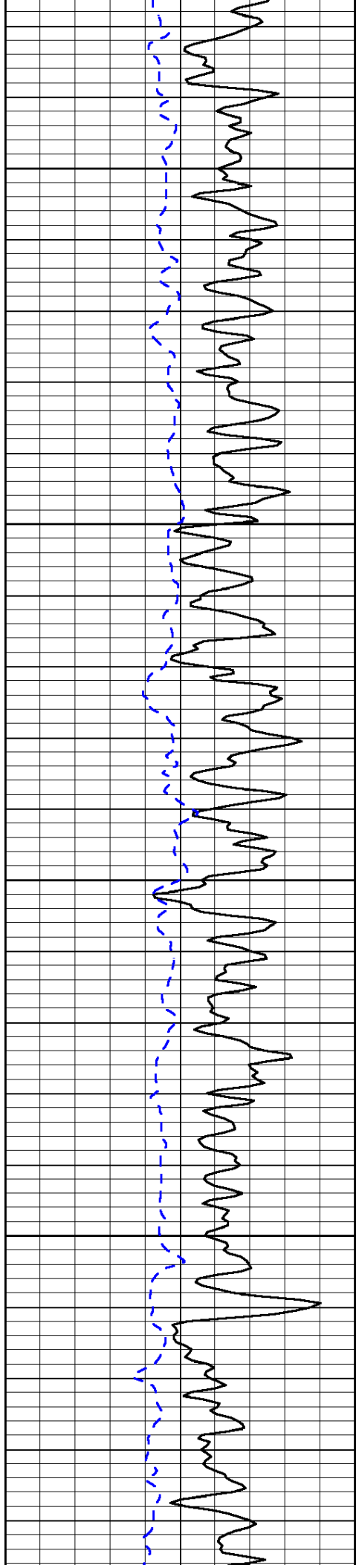
Database File: murfin_011814hd.db
 Dataset Pathname: dil/mrfstck
 Presentation Format: sonic
 Dataset Creation: Sat Jan 18 18:20:11 2014
 Charted by: Depth in Feet scaled 1:240

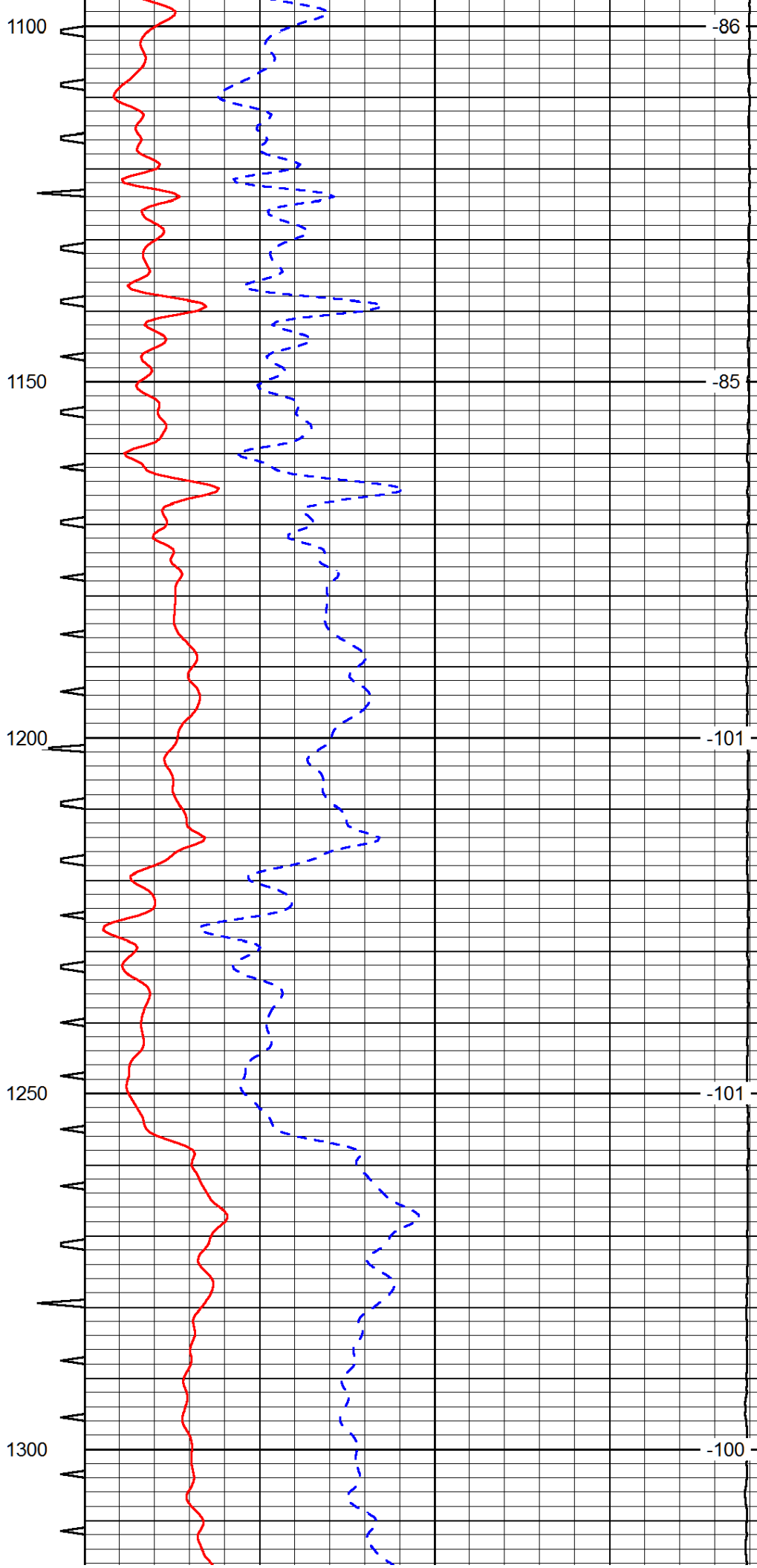
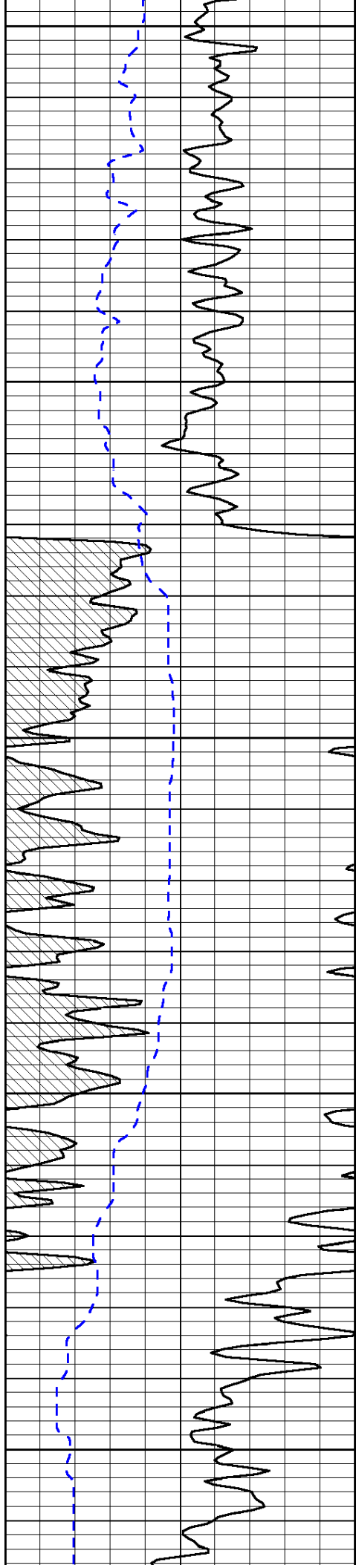
0	Gamma Ray (GAPI)	150	Sonic Int	140	Delta Time (usec/ft) (usec/ft)	40
150	Gamma Ray (GAPI)	300	5 (msec) 0	30	Sonic Porosity (pu)	-10
6	dCAL (in)	16		15000	LTEN (lb) (lb)	0
						LSPD (ft/min)

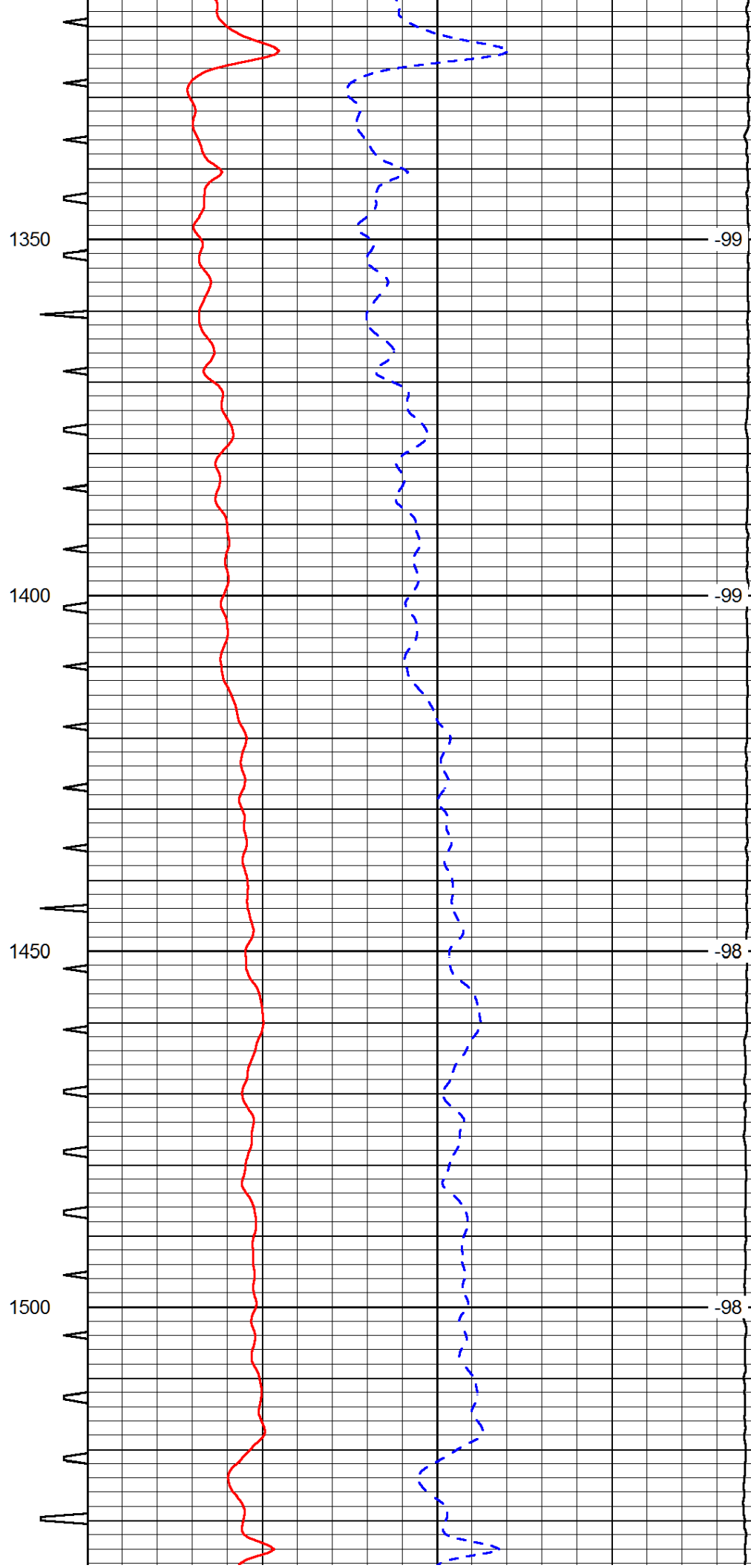
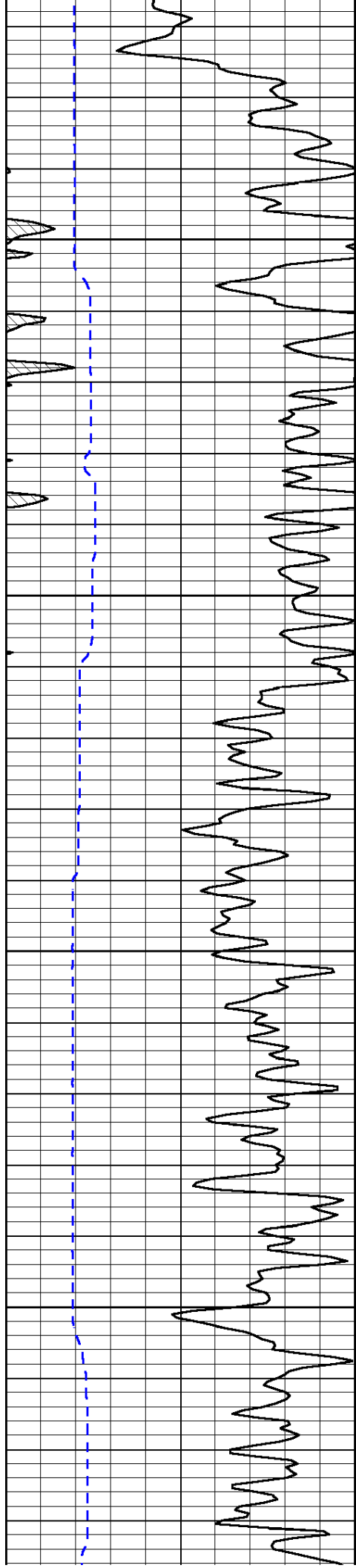


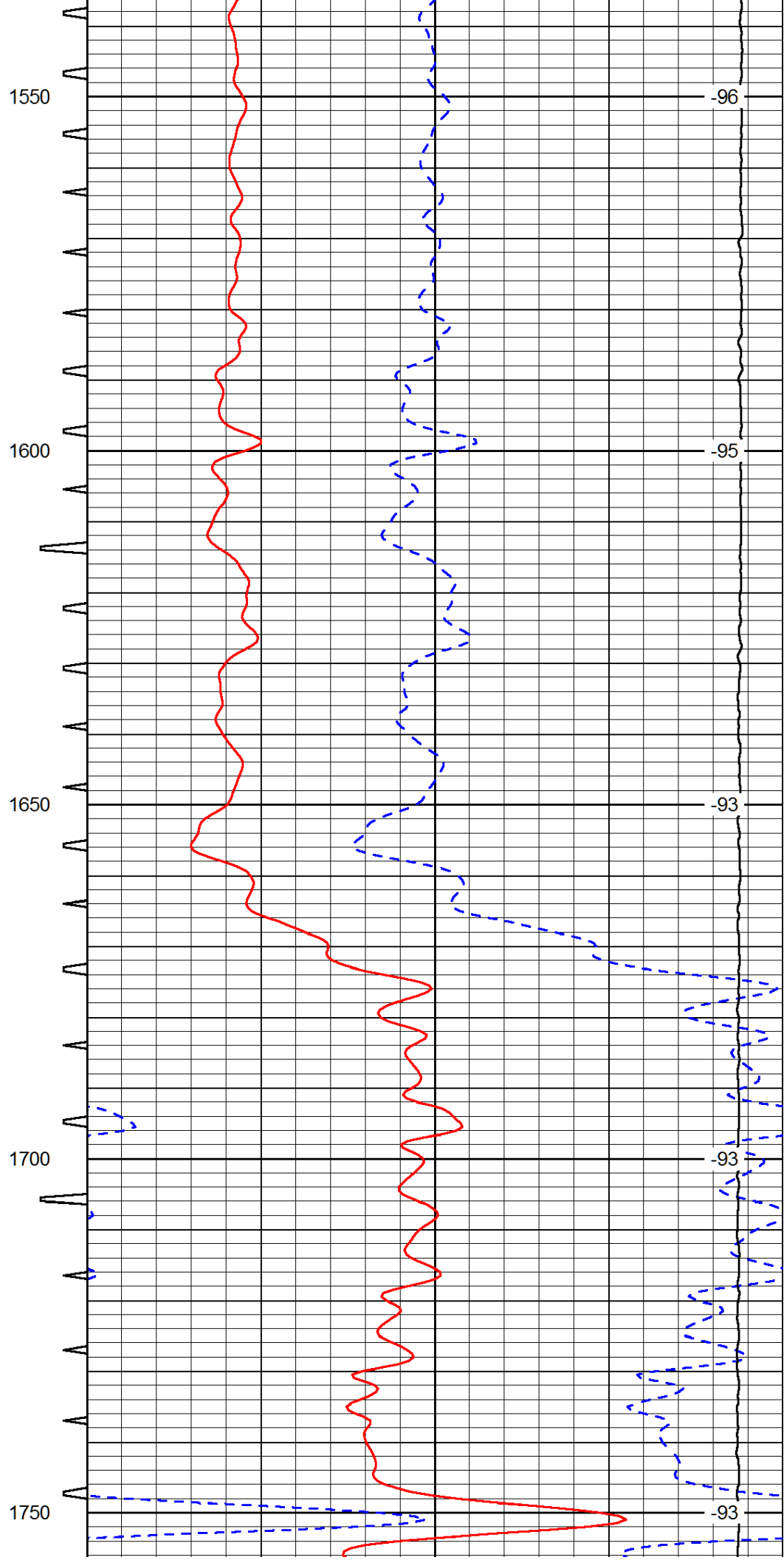
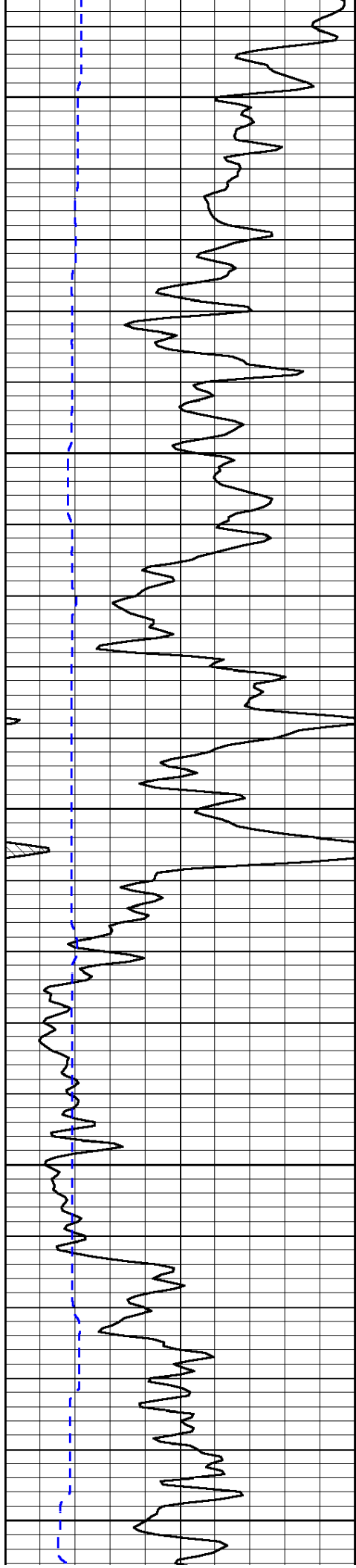


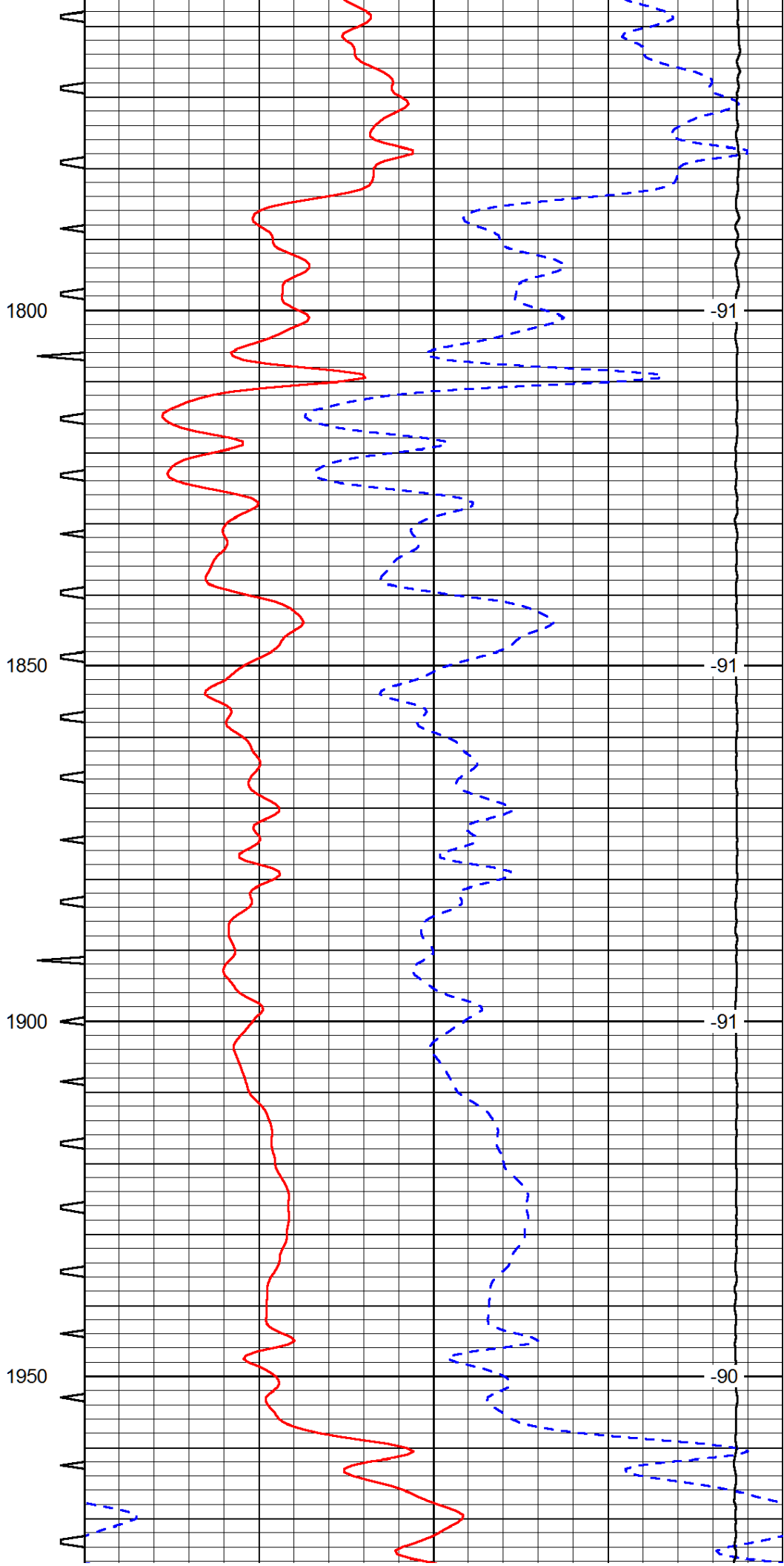
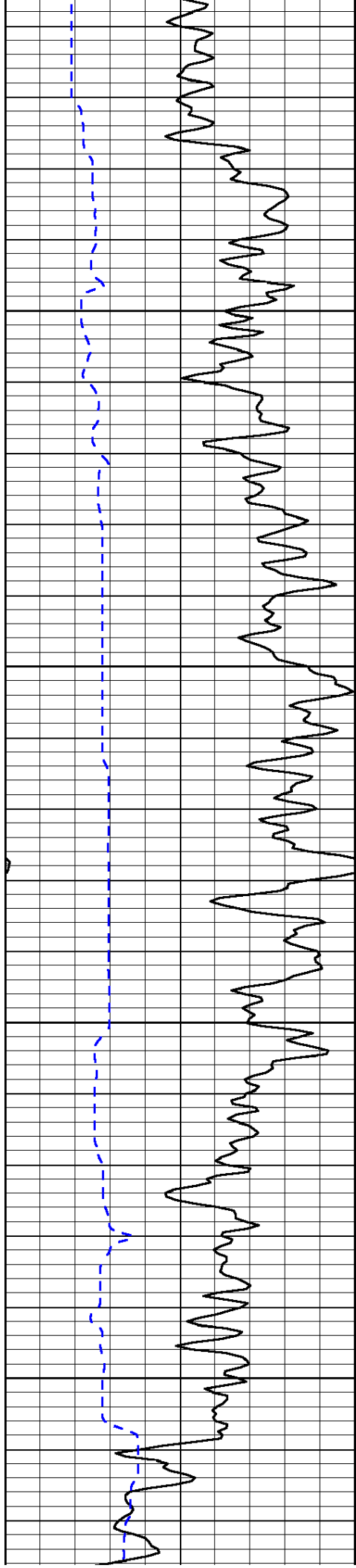


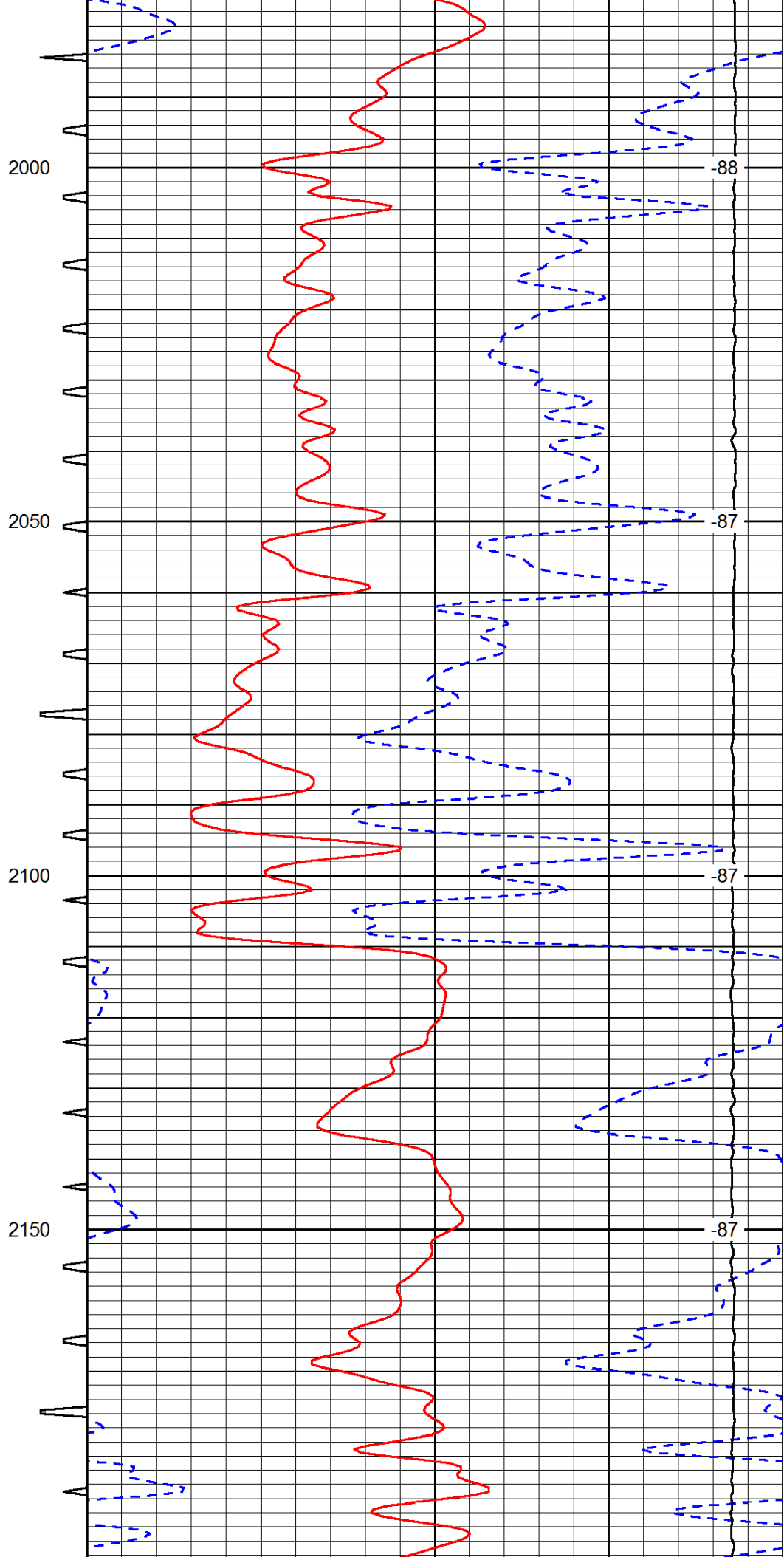
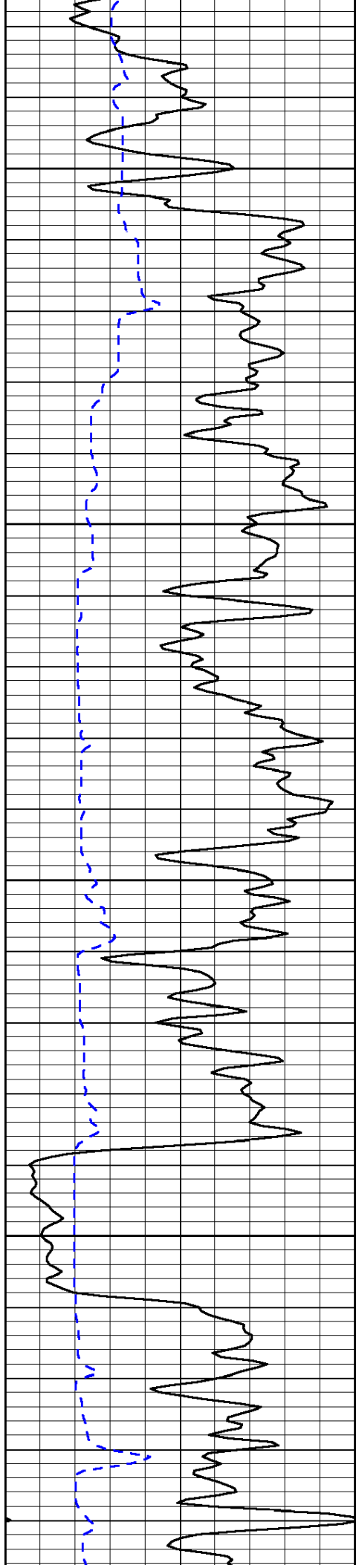


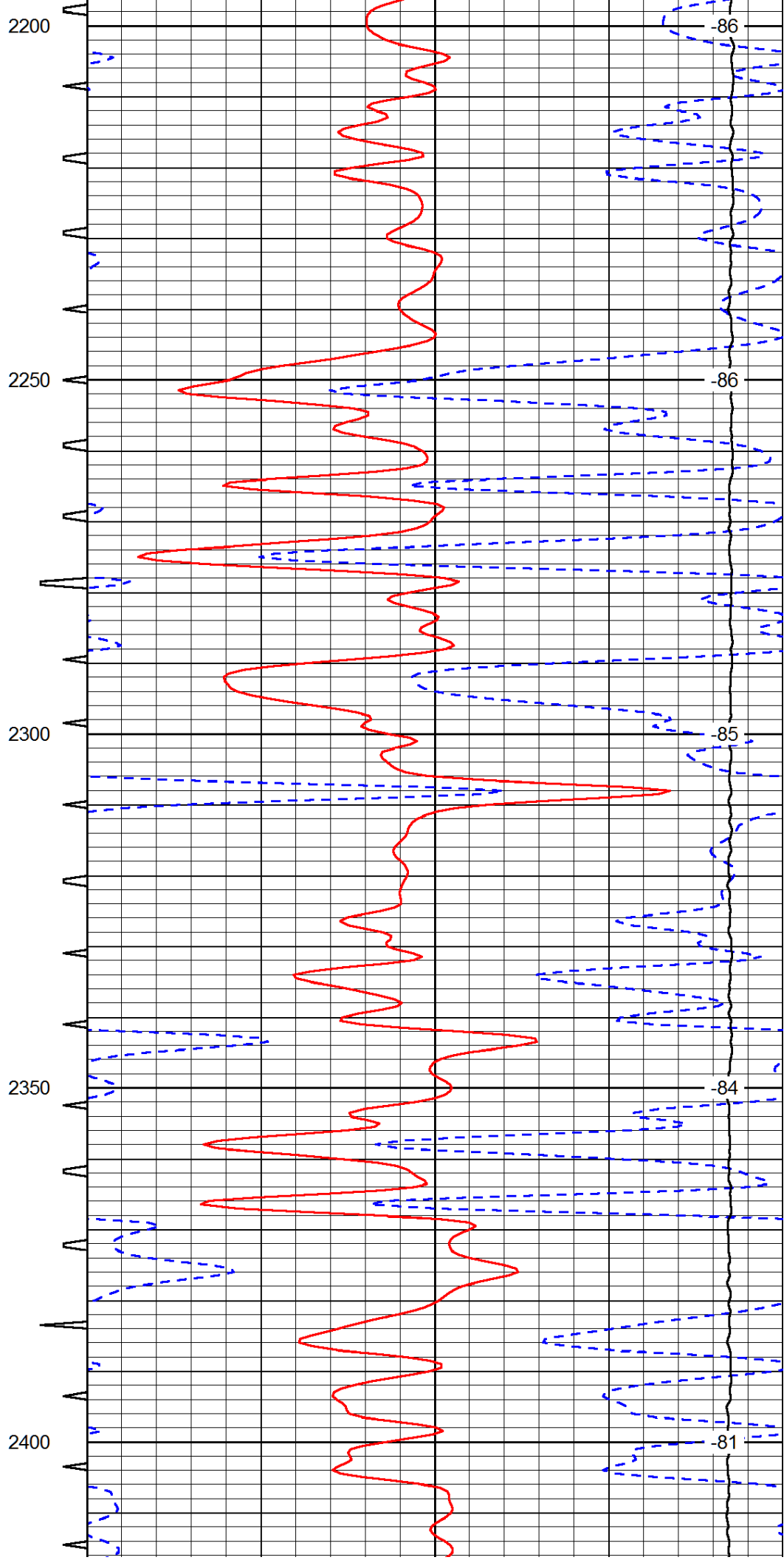
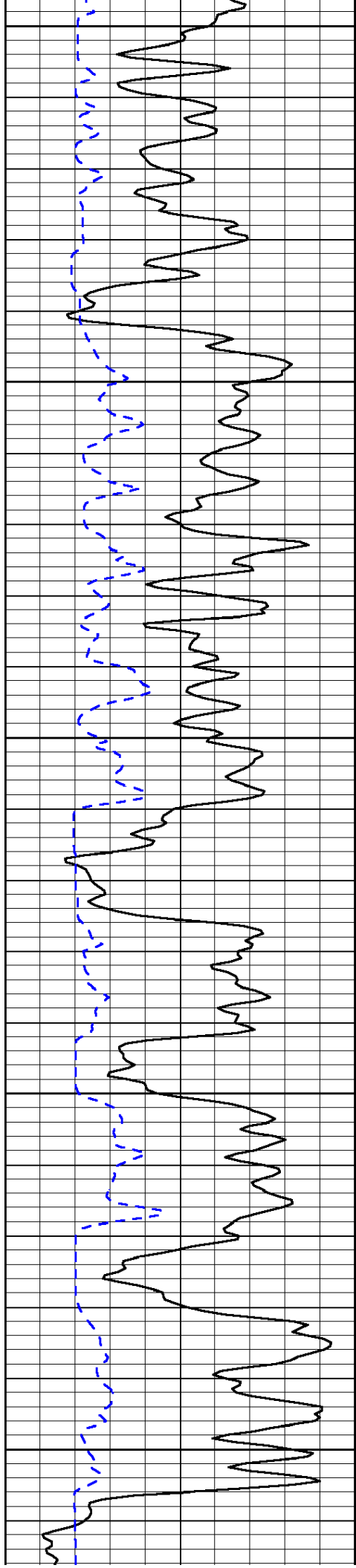


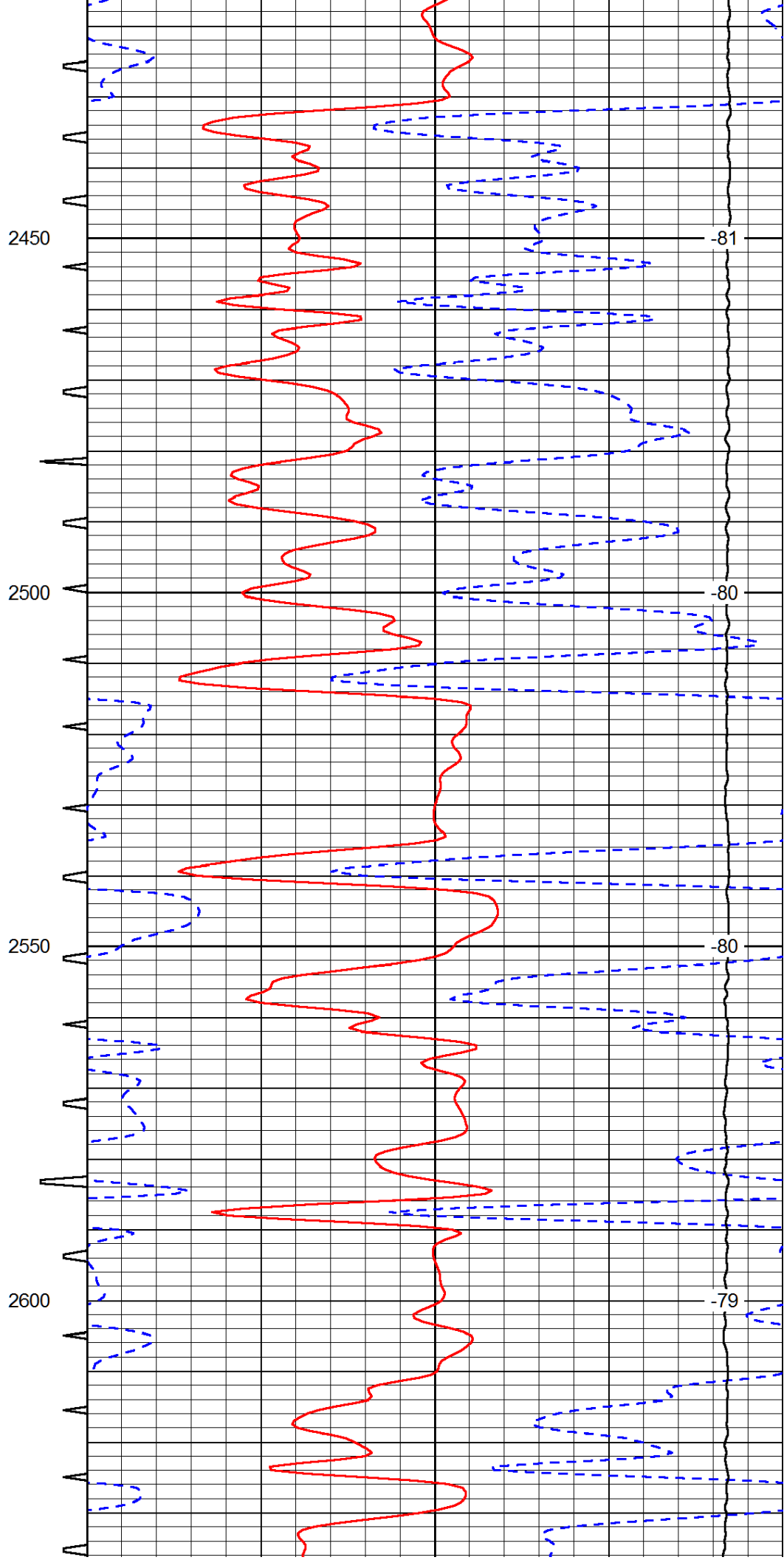
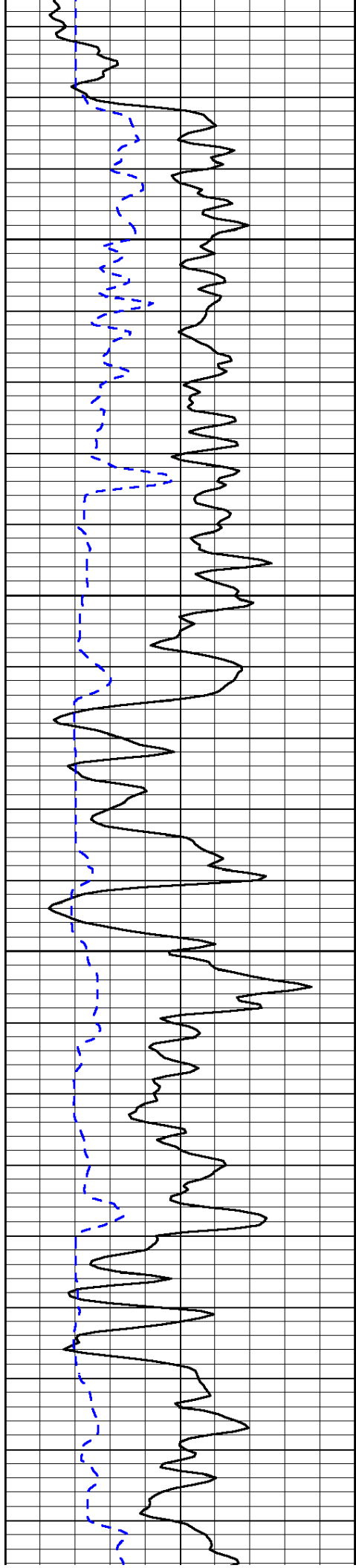


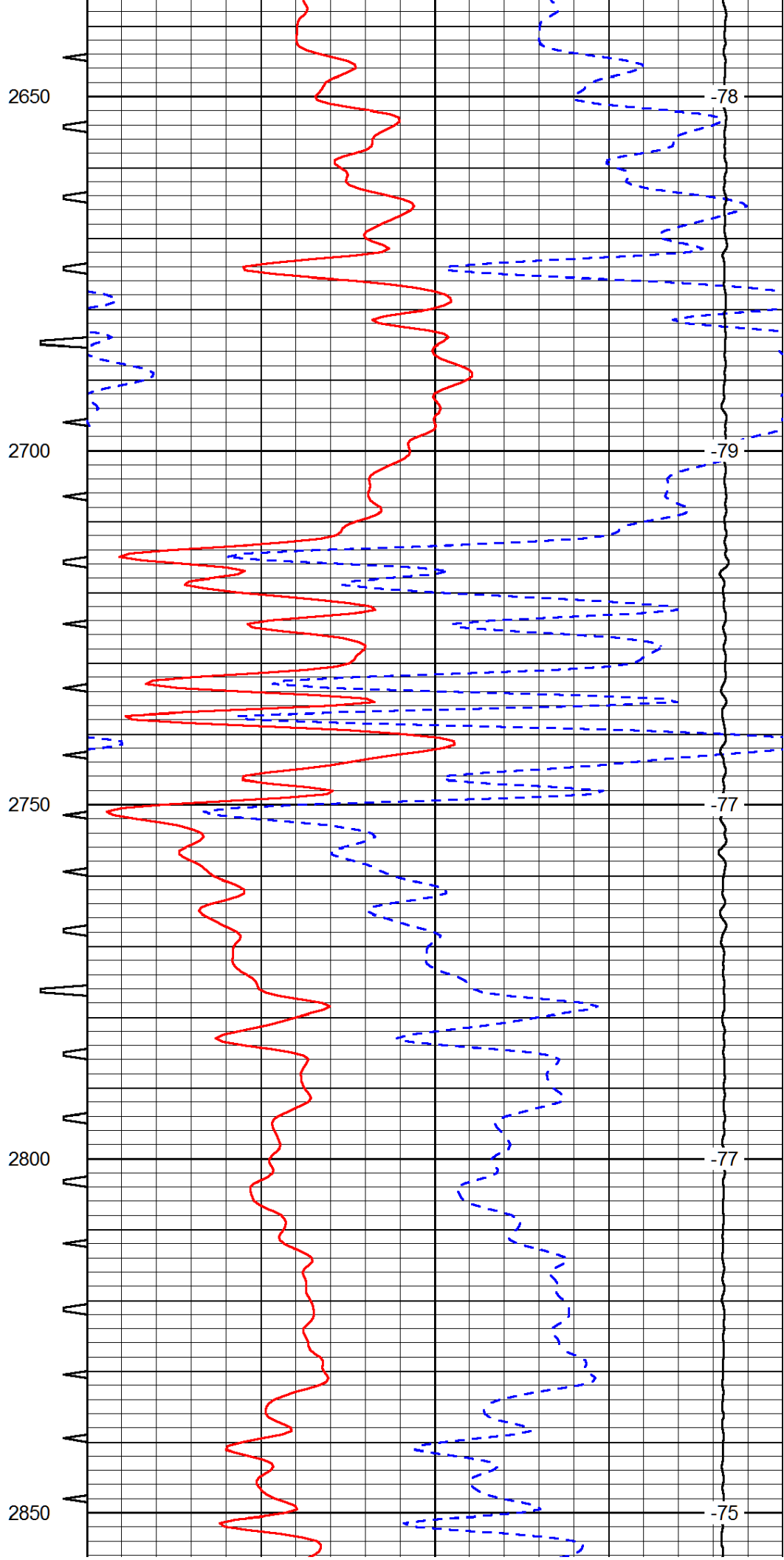
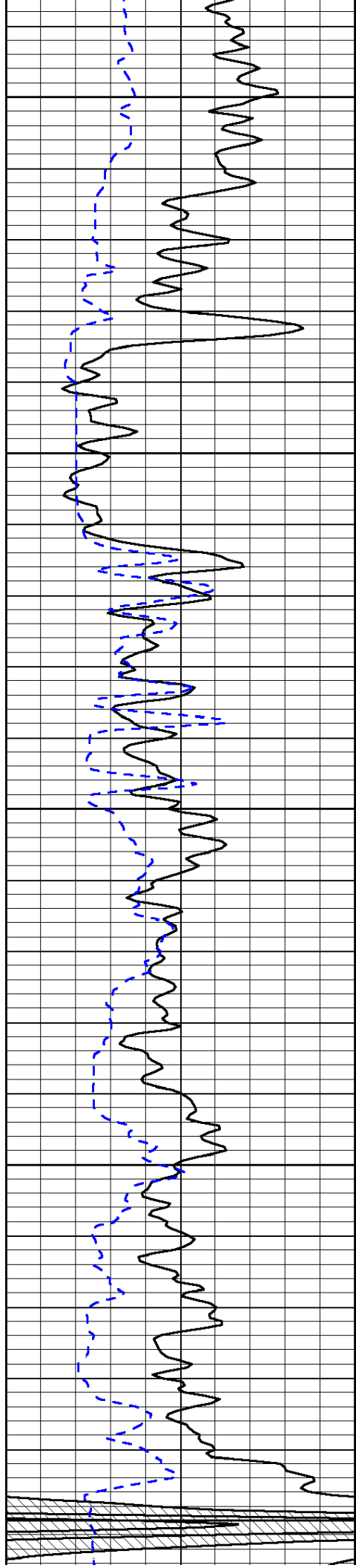


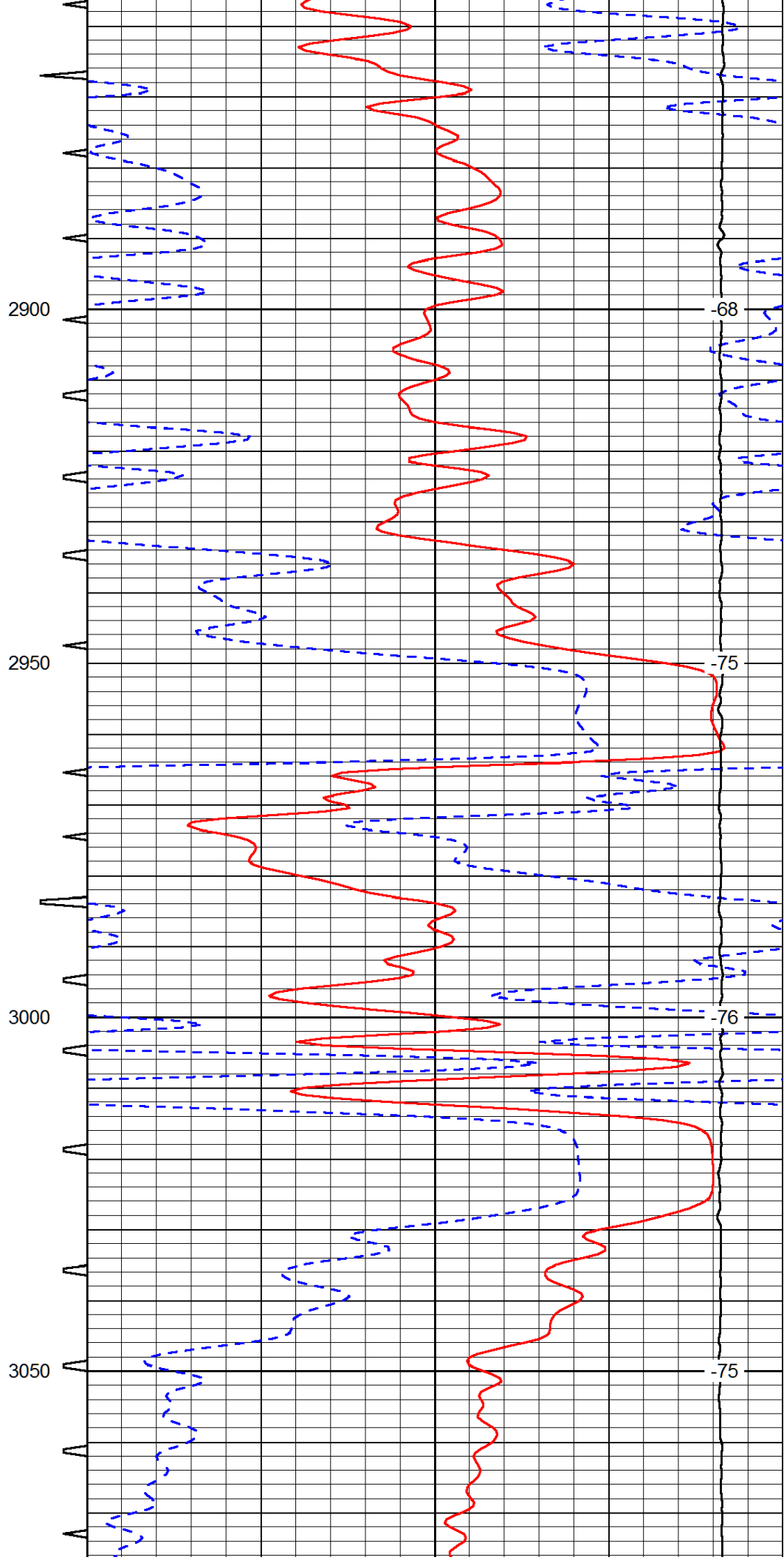
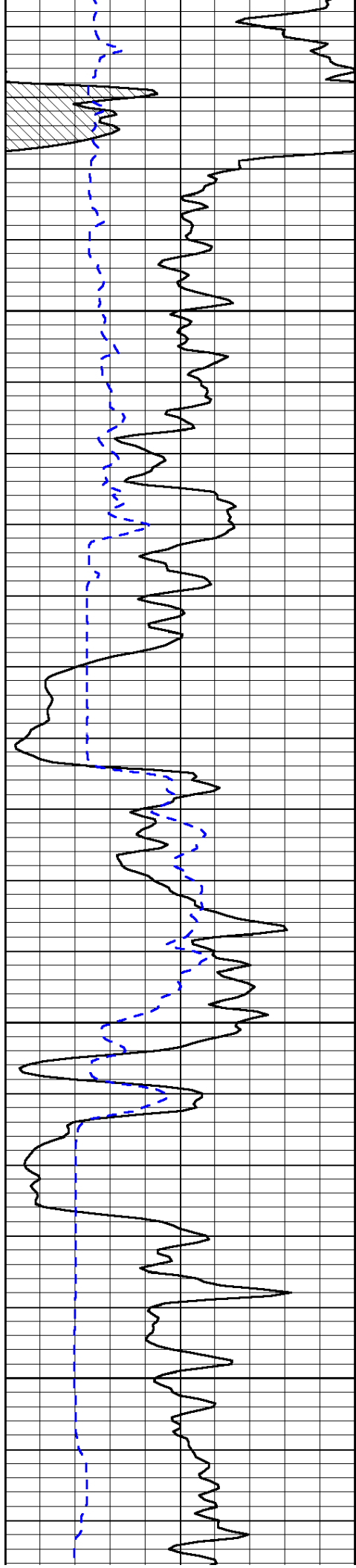


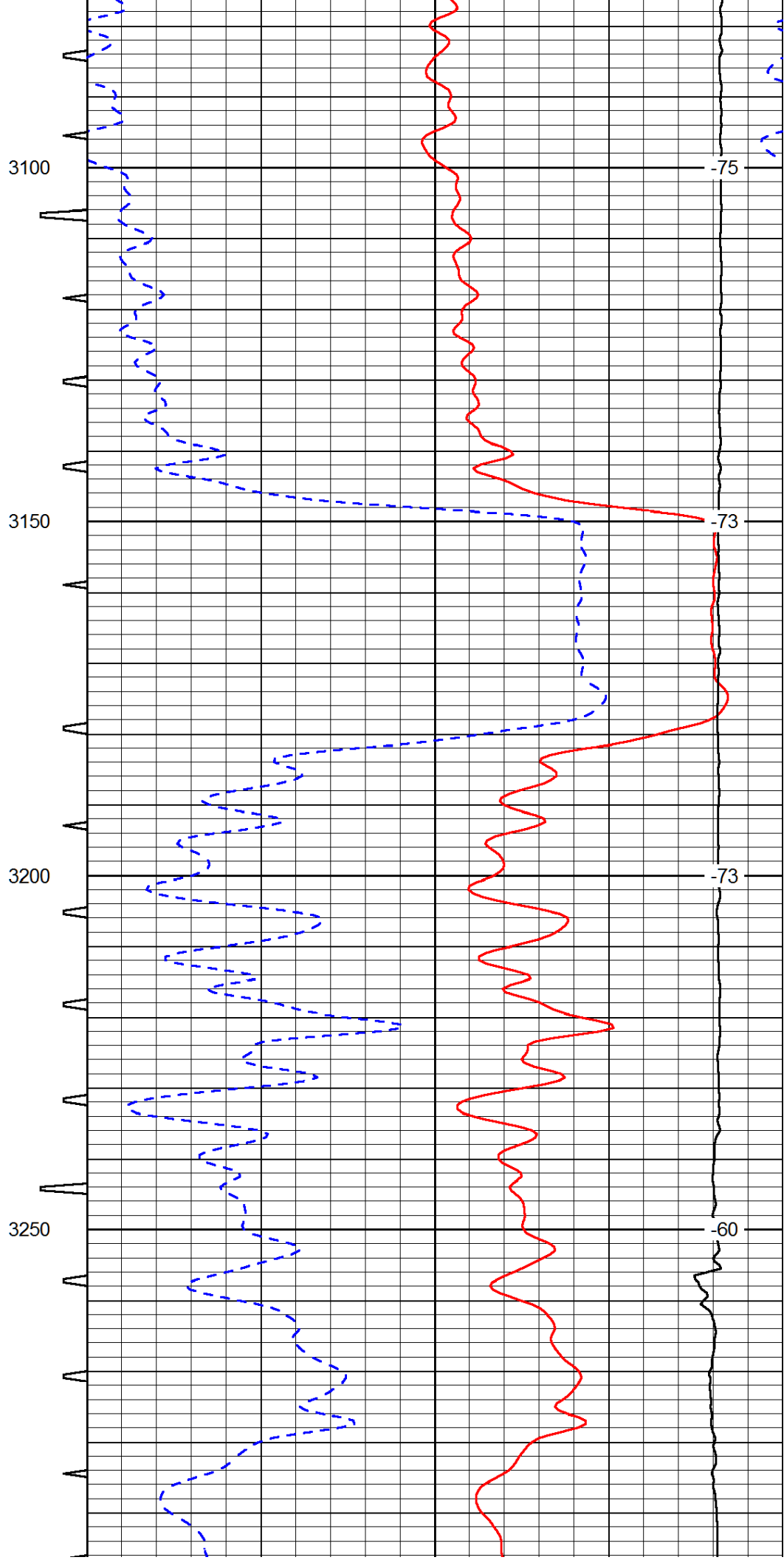
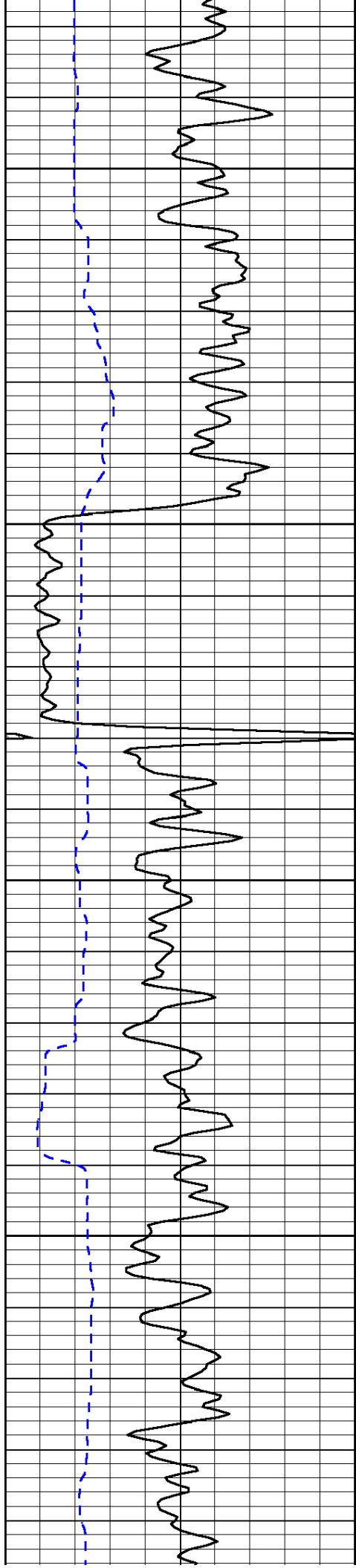


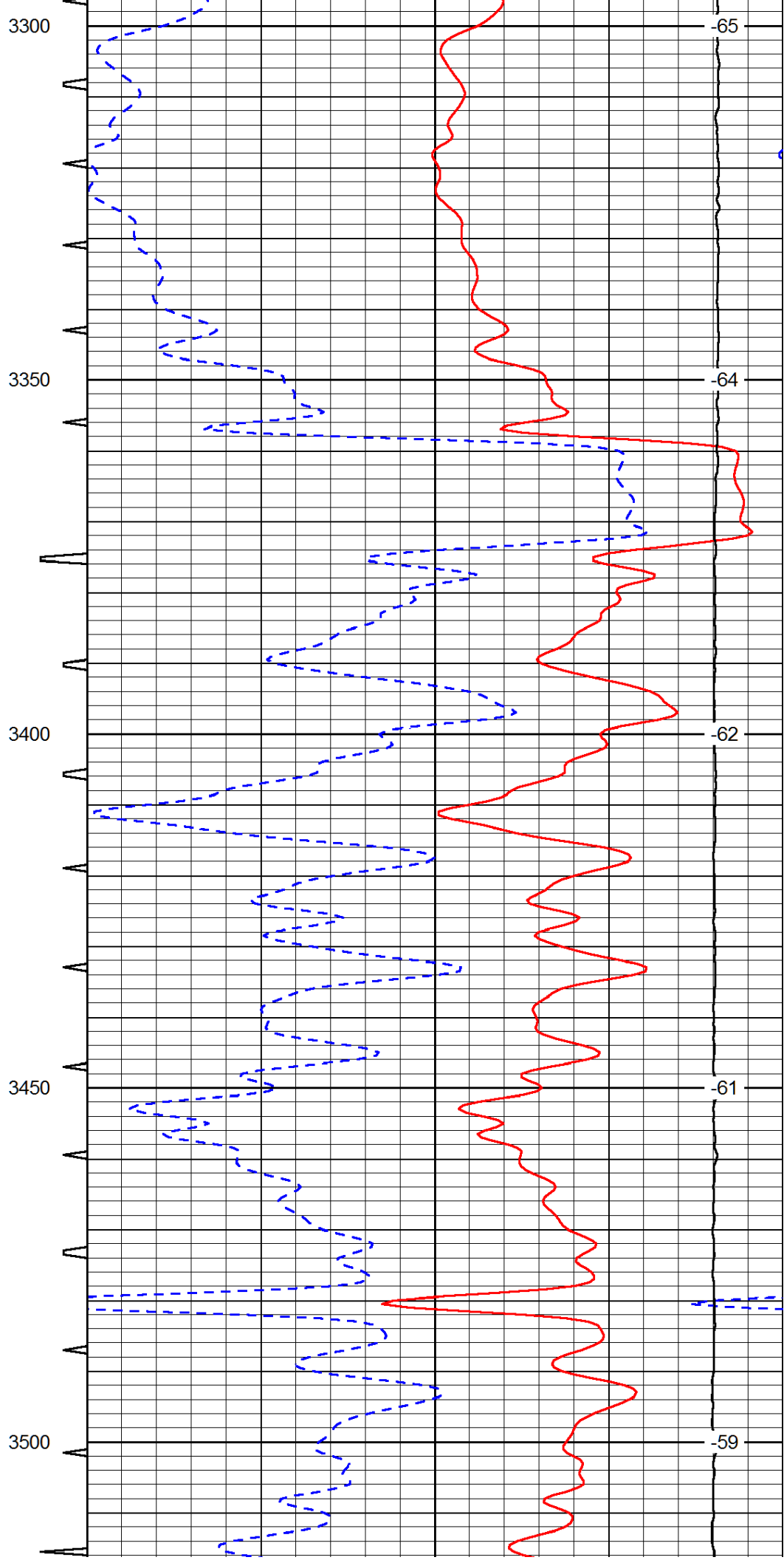
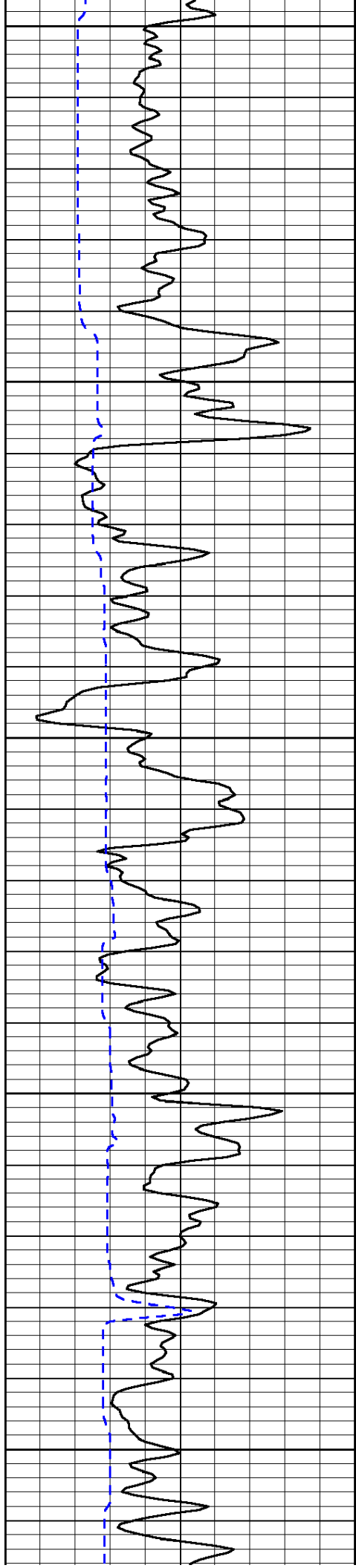


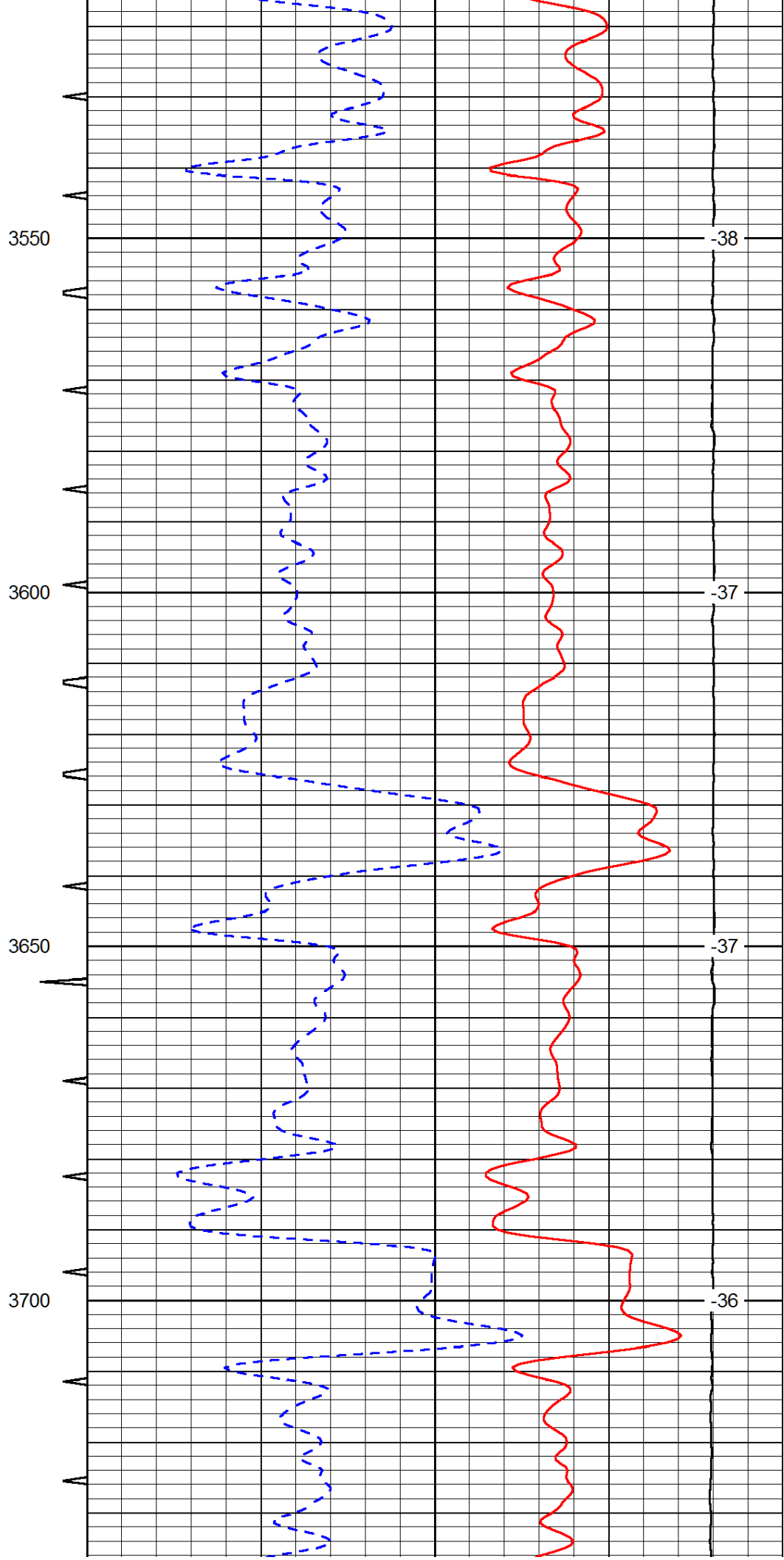
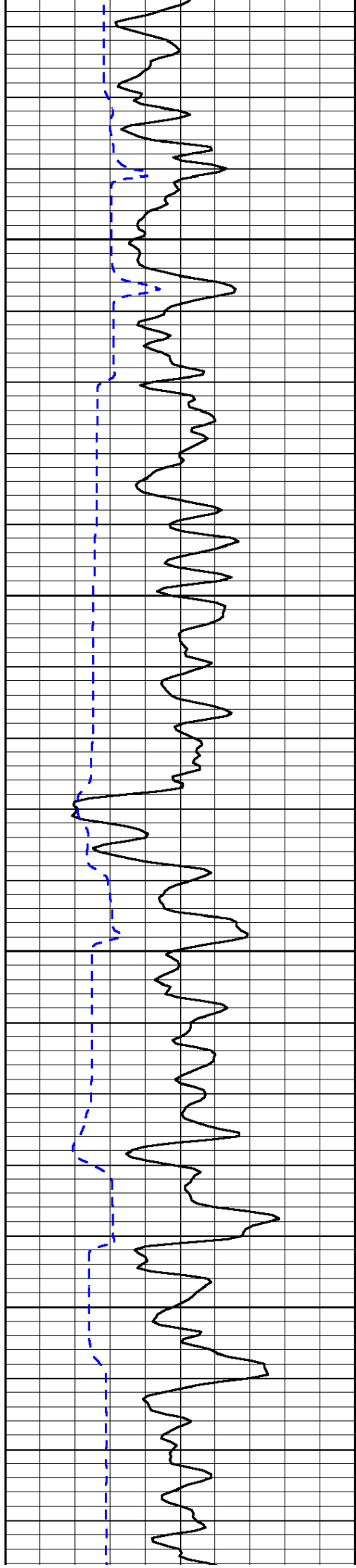


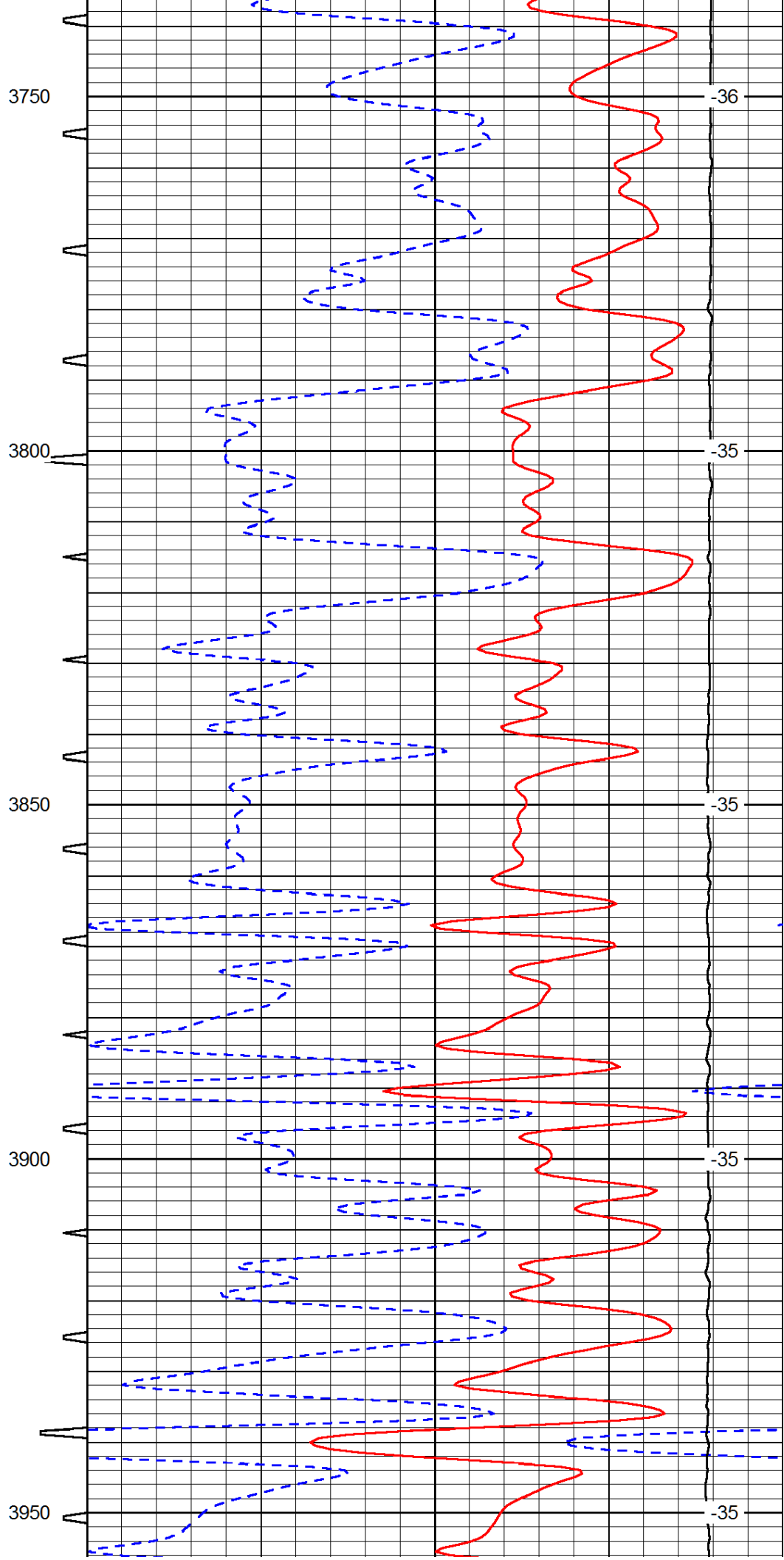
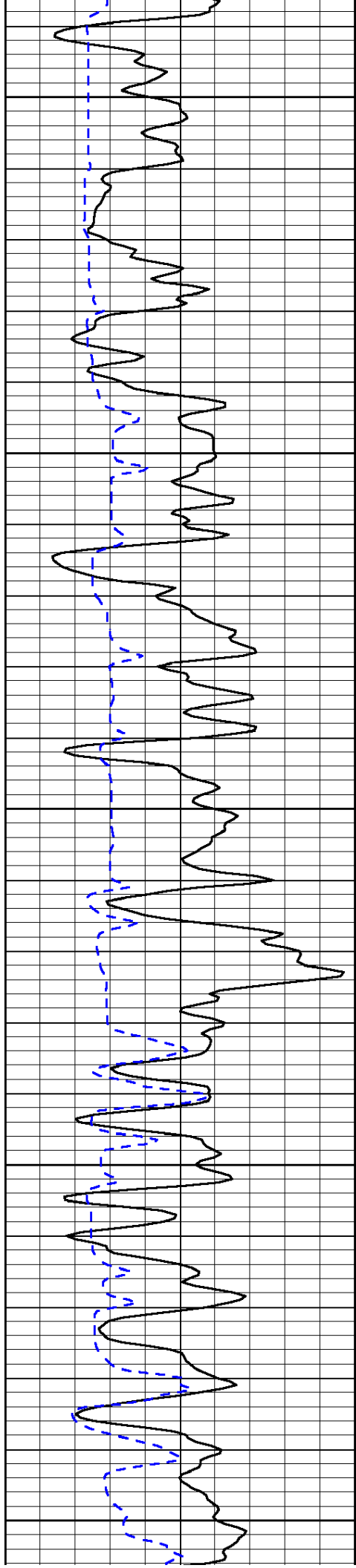


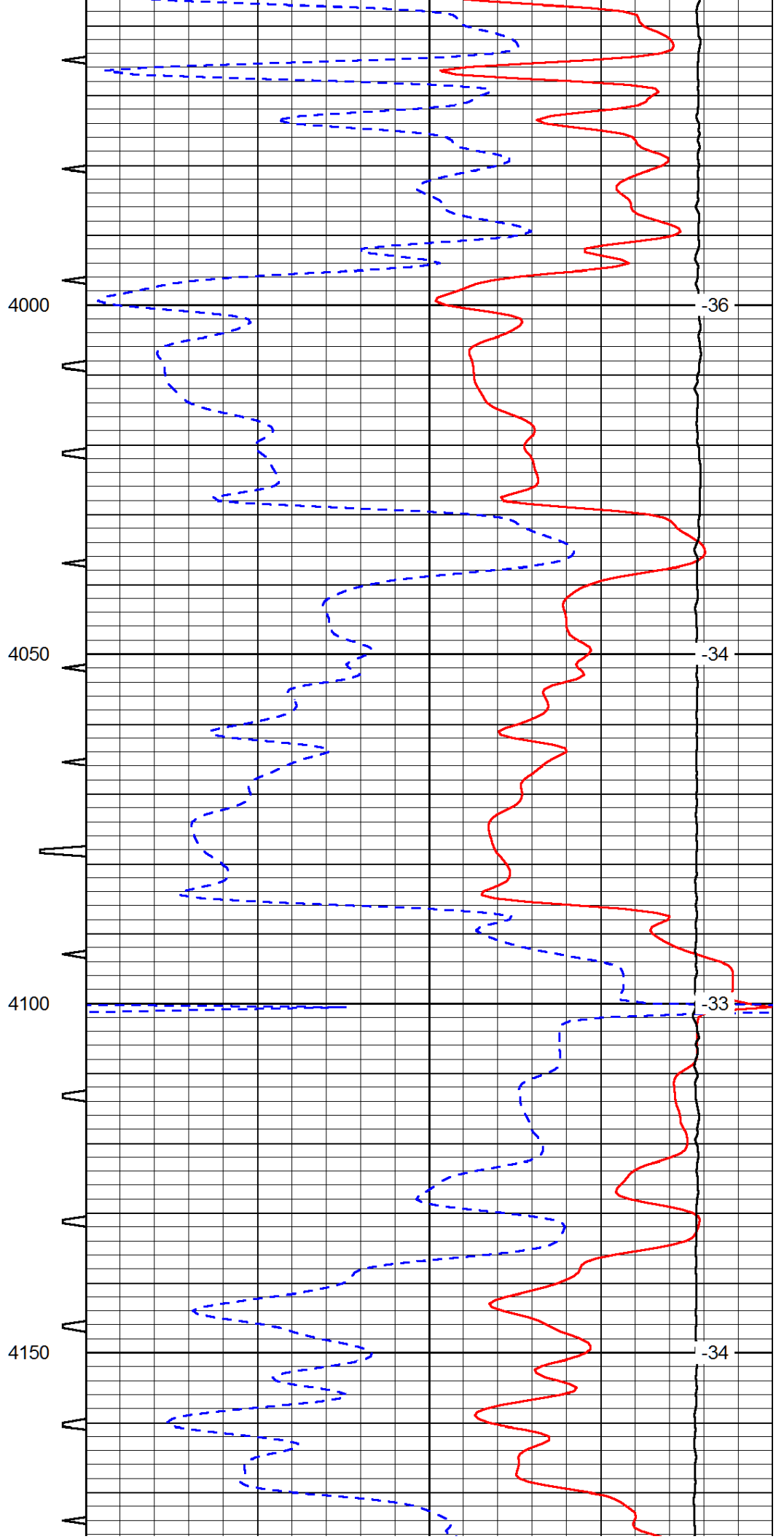
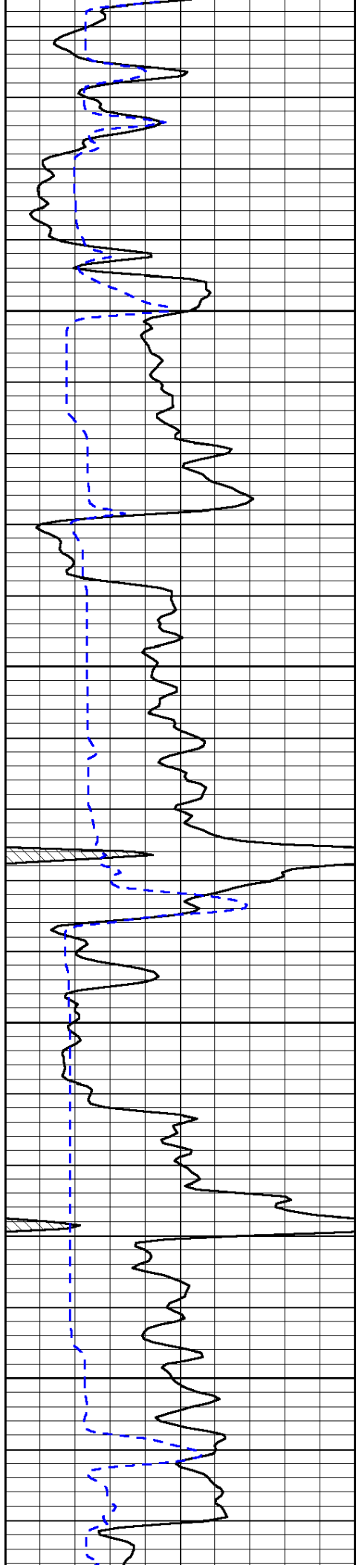


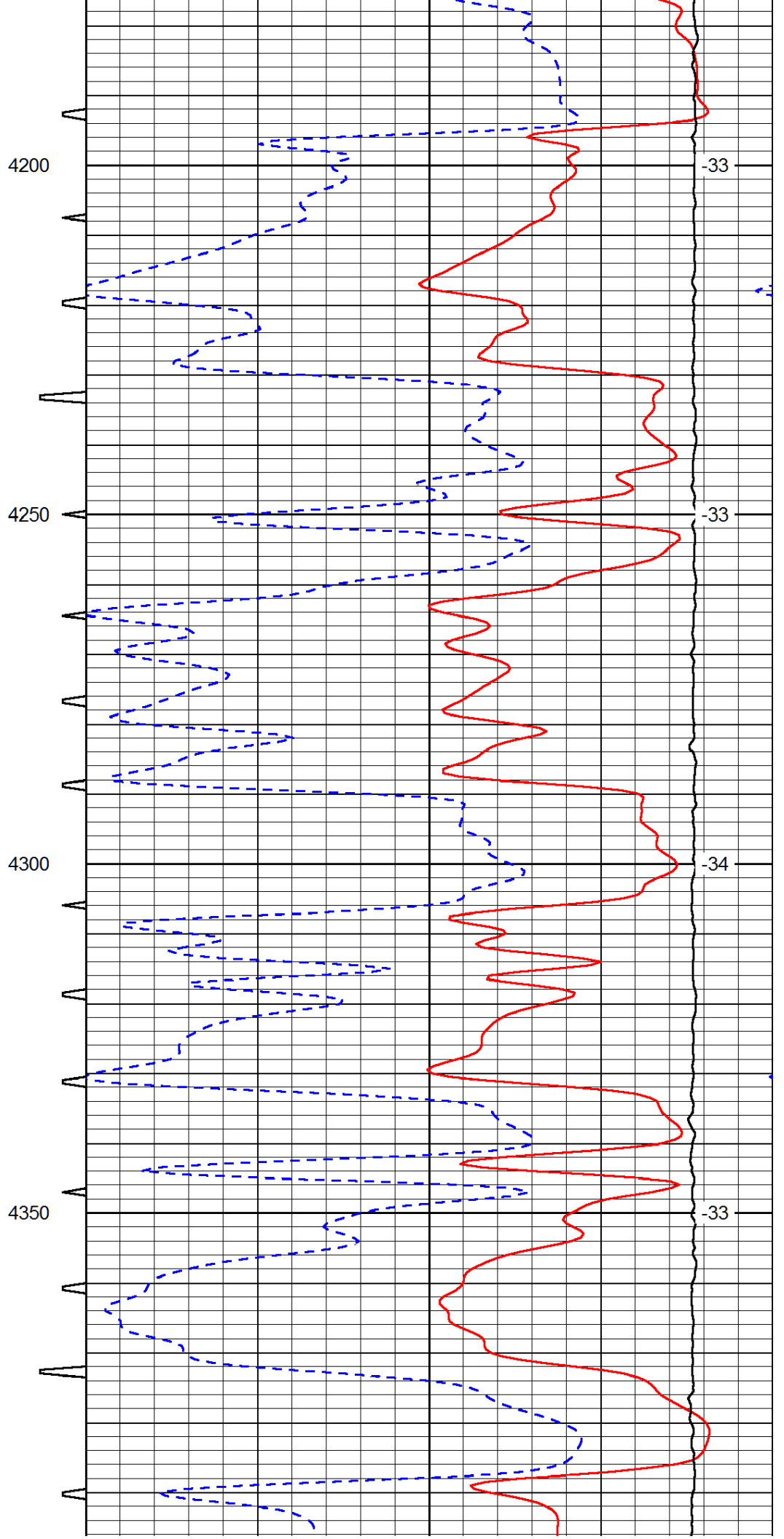
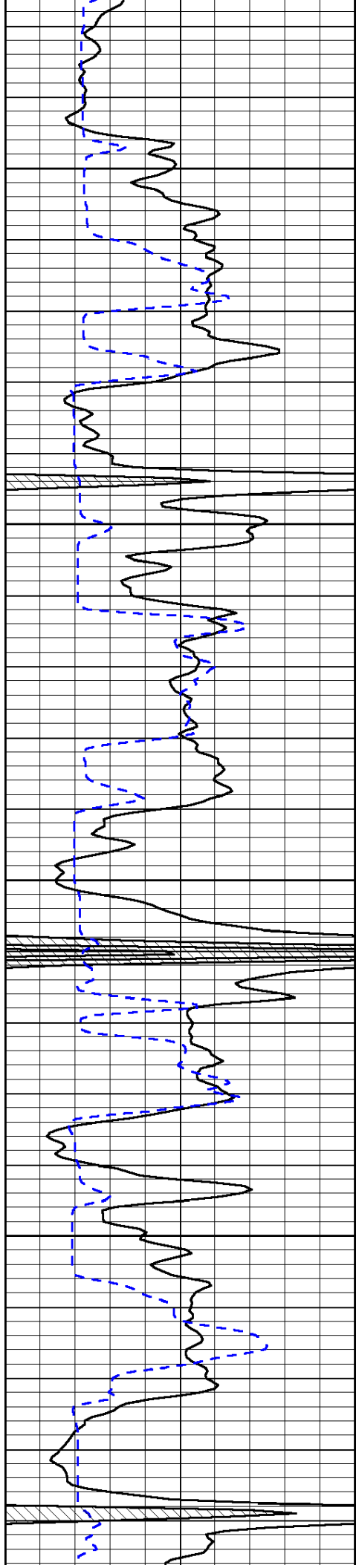


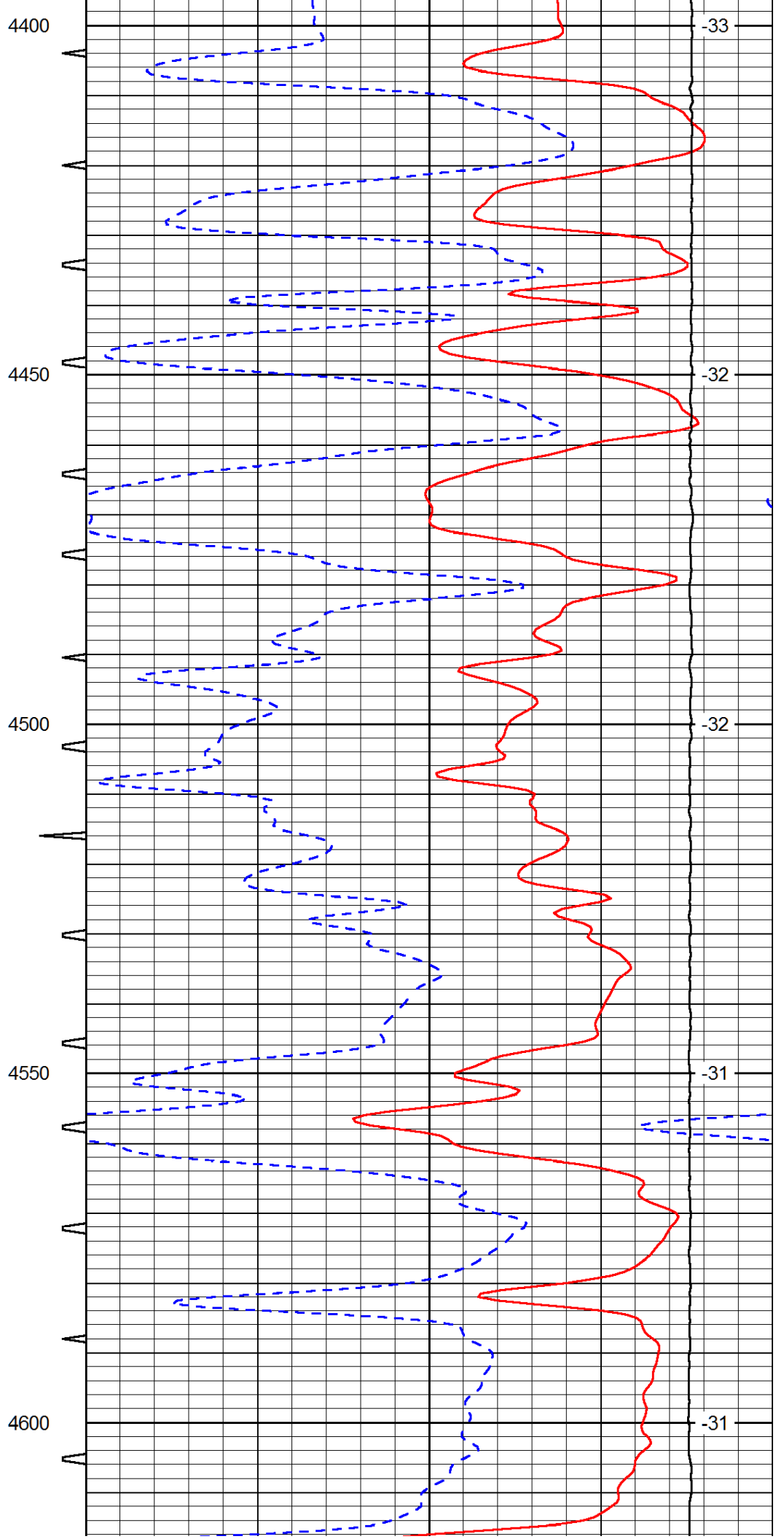
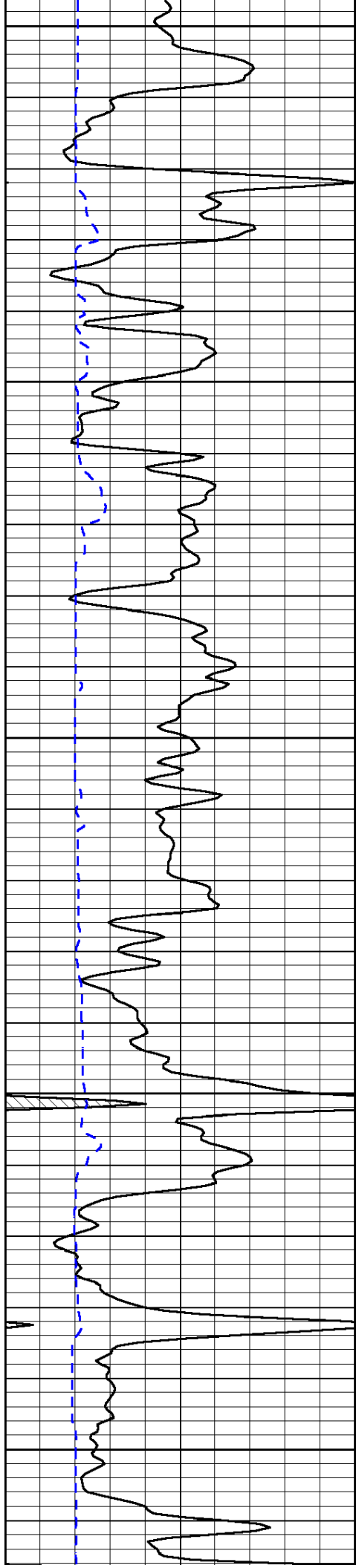


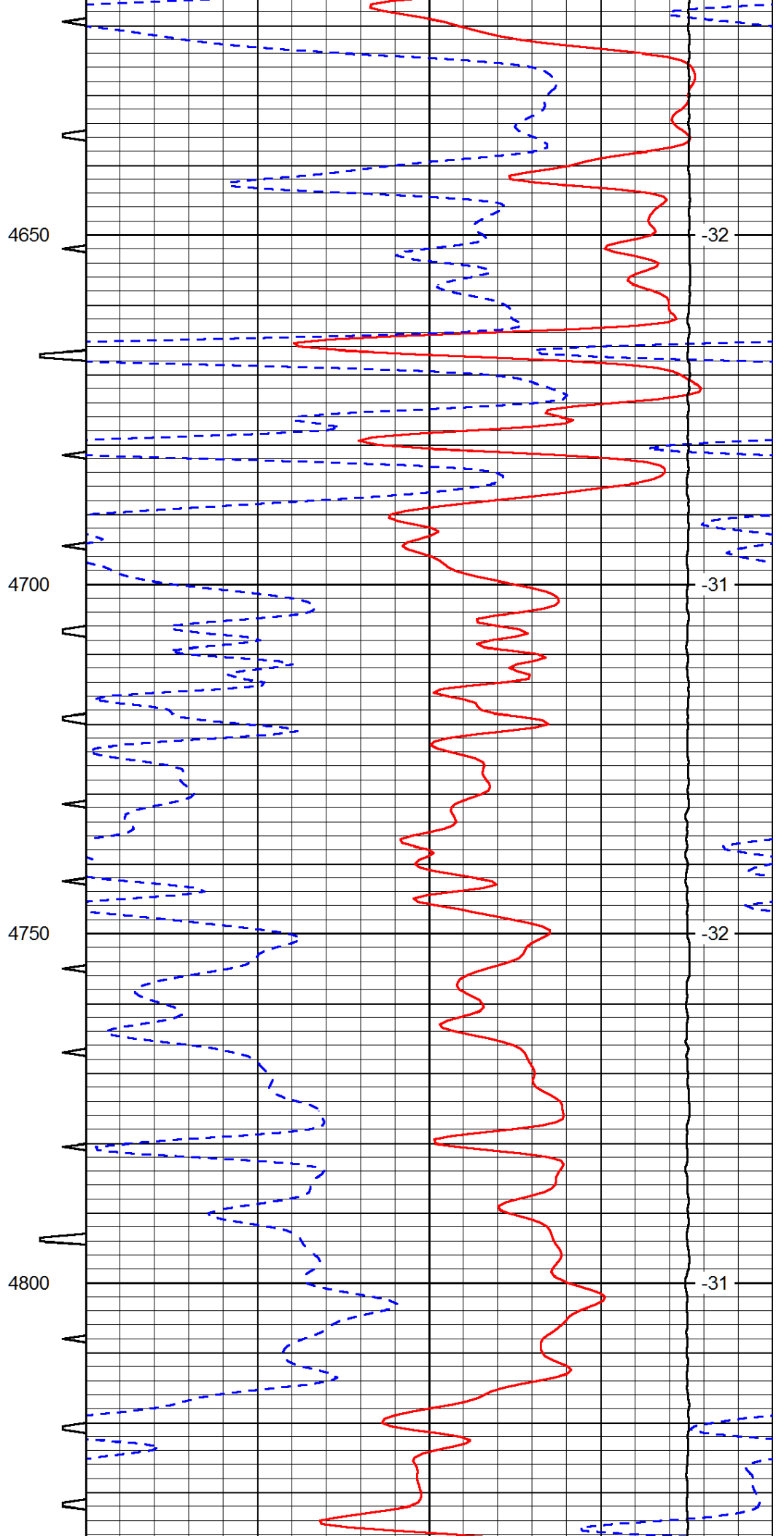
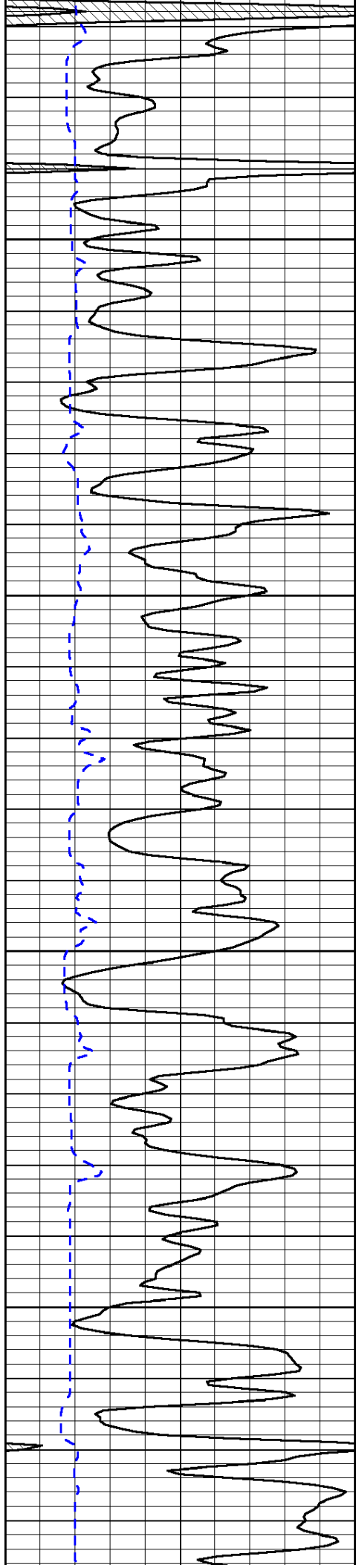


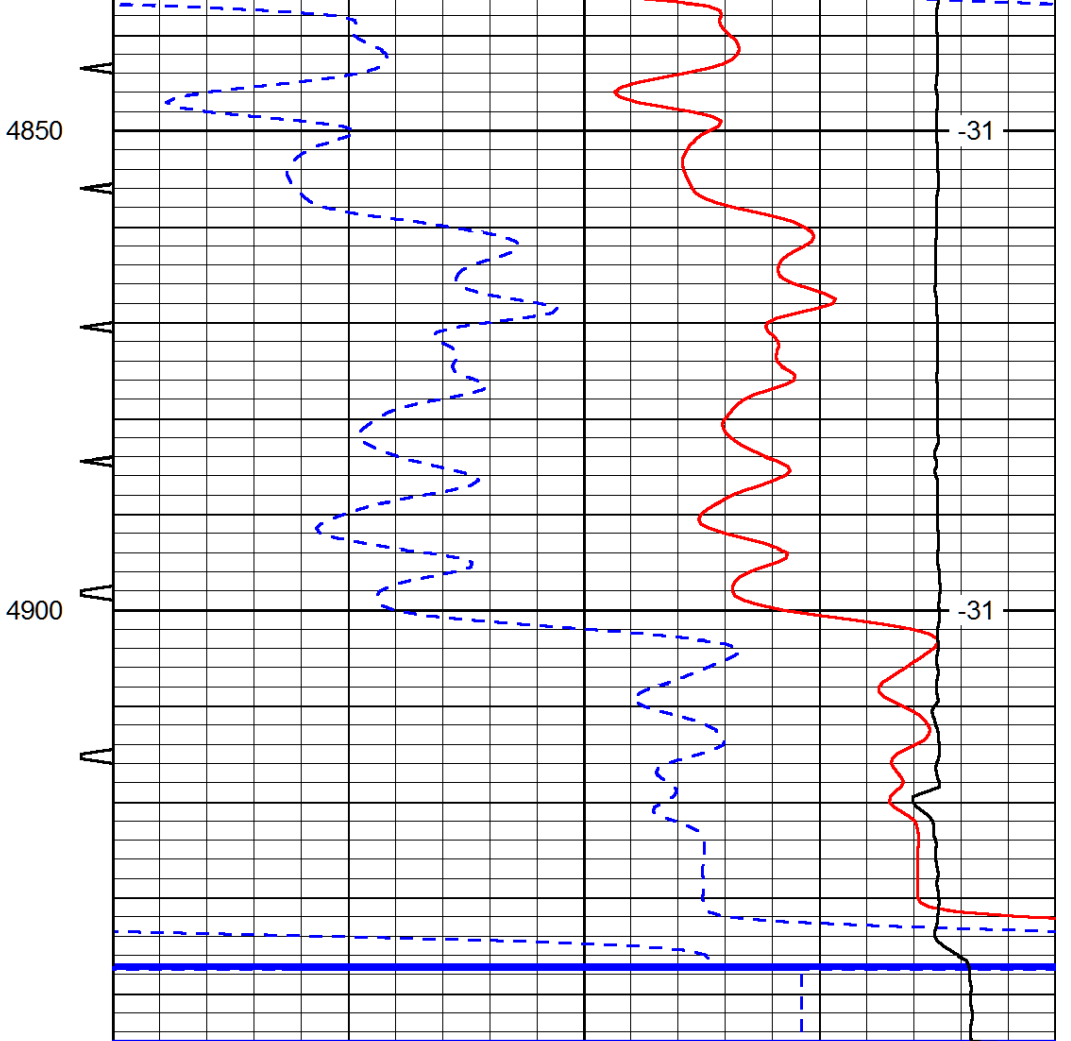
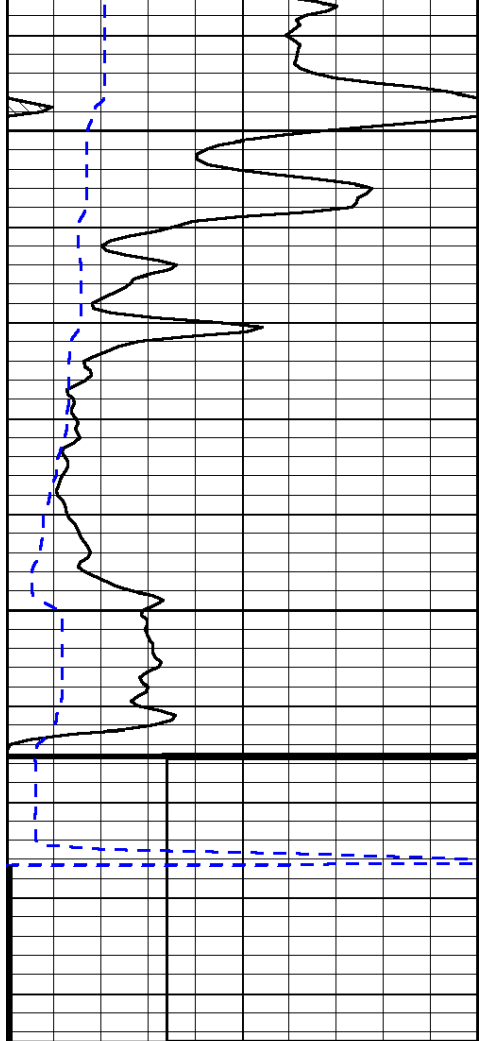












0	Gamma Ray (GAPI)	150	Sonic Int	140	Delta Time (usec/ft) (usec/ft)	40
150	Gamma Ray (GAPI)	300	5 (msec) 0	30	Sonic Porosity (pu)	-10
6	dCAL (in)	16		15000	LTEN (lb) (lb)	0
						LSPD (ft/min)