



Pioneer Energy Services

Microresistivity Log

API No.	15-153-20974-00-00		
Company	Murfin Drilling Company, Inc.	Location	2170' FNL & 330' FWL
Well	Kacirek Trust #1-5	County	Rawlins
Field	Wildcat	State	Kansas
Sec:	5	Twp:	2S
Rge:	36W	Elevation	3247
Other Services	CNL/CDL DIL/BHCS	K.B.	3252
D.F.	3247	G.L.	3247

Permanent Datum	Ground Level	Elevation	3247
Log Measured From	Kelly Bushing	5	Ft. Above Perm. Datum
Drilling Measured From	Kelly Bushing		
Date	1/18/2014		
Run Number	Two		
Depth Driller	4945		
Depth Logger	4935		
Bottom Logged Interval	4934		
Top Log Interval	4125		
Casing Driller	8.625 @ 254		
Casing Logger	256		
Bit Size	7.875		
Type Fluid in Hole	Chemical		
Salinity, ppm CL	1000		
Density / Viscosity	9.3 77		
pH / Fluid Loss	10.0 7.8		
Source of Sample	Flowline		
Rm @ Meas. Temp	0.95 @ 38		
Rmf @ Meas. Temp	0.71 @ 38		
Rmc @ Meas. Temp	1.28 @ 38		
Source of Rmf / Rmc	Charts		
Rm @ BHT	0.28 @ 127		
Operating Rig Time	5 Hours		
Max Rec. Temp. F	127		
Equipment Number	91		
Location	Hays		
Recorded By	D. Schmidt		
Witnessed By	Charles Schmitz		

<<< Fold Here >>>

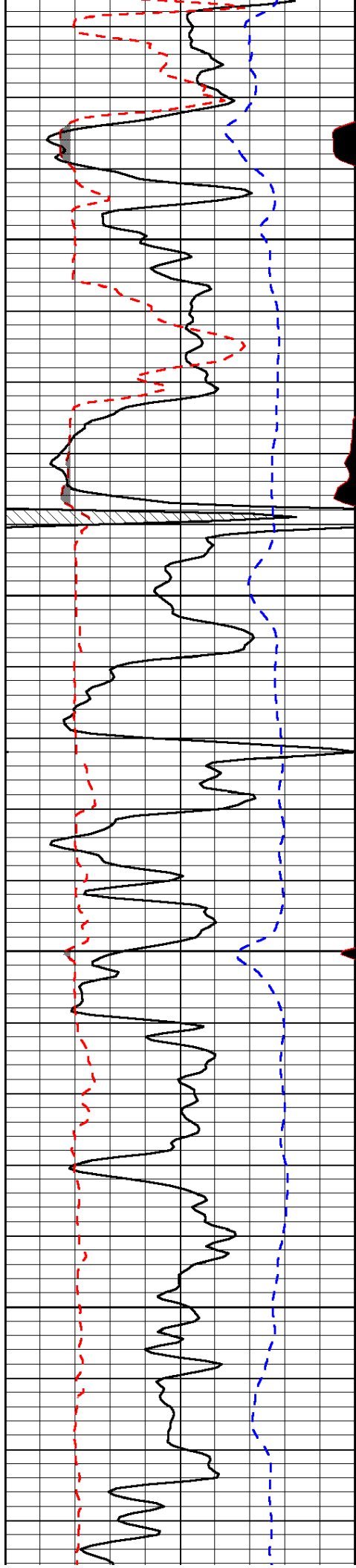
All interpretations are opinions based on inferences from electrical or other measurements and we cannot and do not guarantee the accuracy or correctness of any interpretation, and we shall not, except in the case of gross or willful negligence on our part, be liable or responsible for any loss, costs, damages, or expenses incurred or sustained by anyone resulting from any interpretation made by any of our officers, agents or employees. These interpretations are also subject to our general terms and conditions set out in our current Price Schedule.

Comments

Thank you for using Log-Tech, Inc.
(785) 625-3858

McDonald,
8 1/4 North, 1/2 West, 1/4 North,
West & North to location

Database File: murfin_011814hd.db
 Dataset Pathname: dil/mrfstck
 Presentation Format: micro
 Dataset Creation: Sat Jan 18 18:20:11 2014
 Charted by: Depth in Feet scaled 1:240

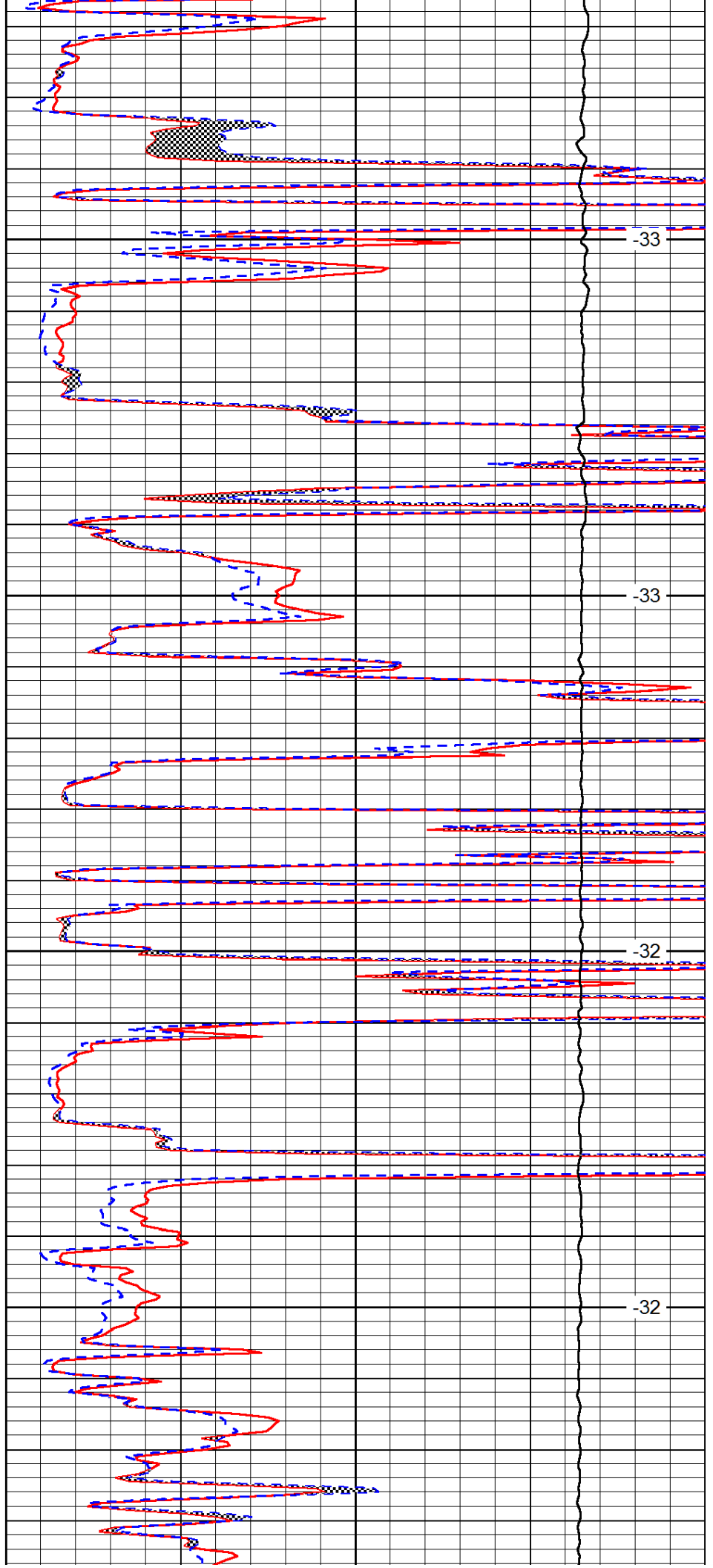


4350

4400

4450

4500

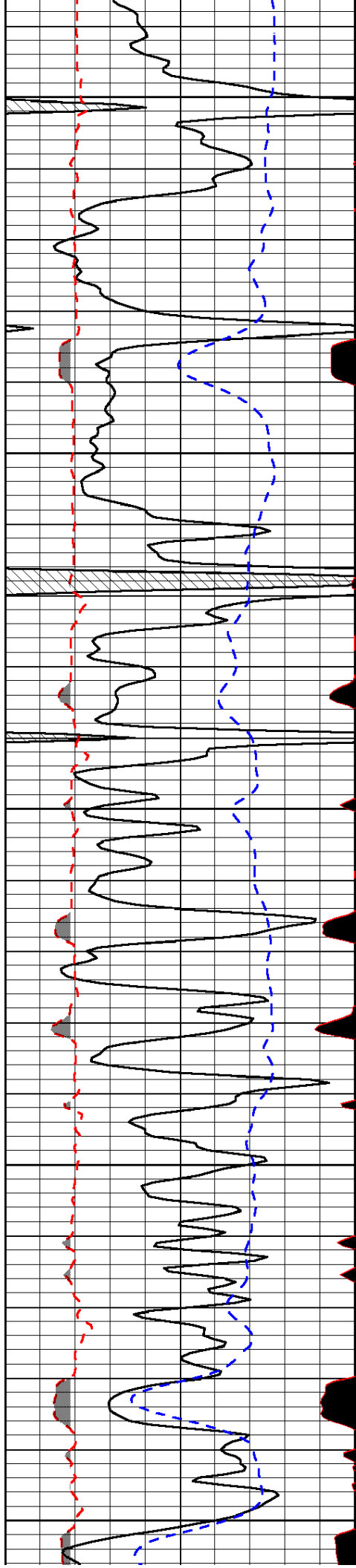


-33

-33

-32

-32



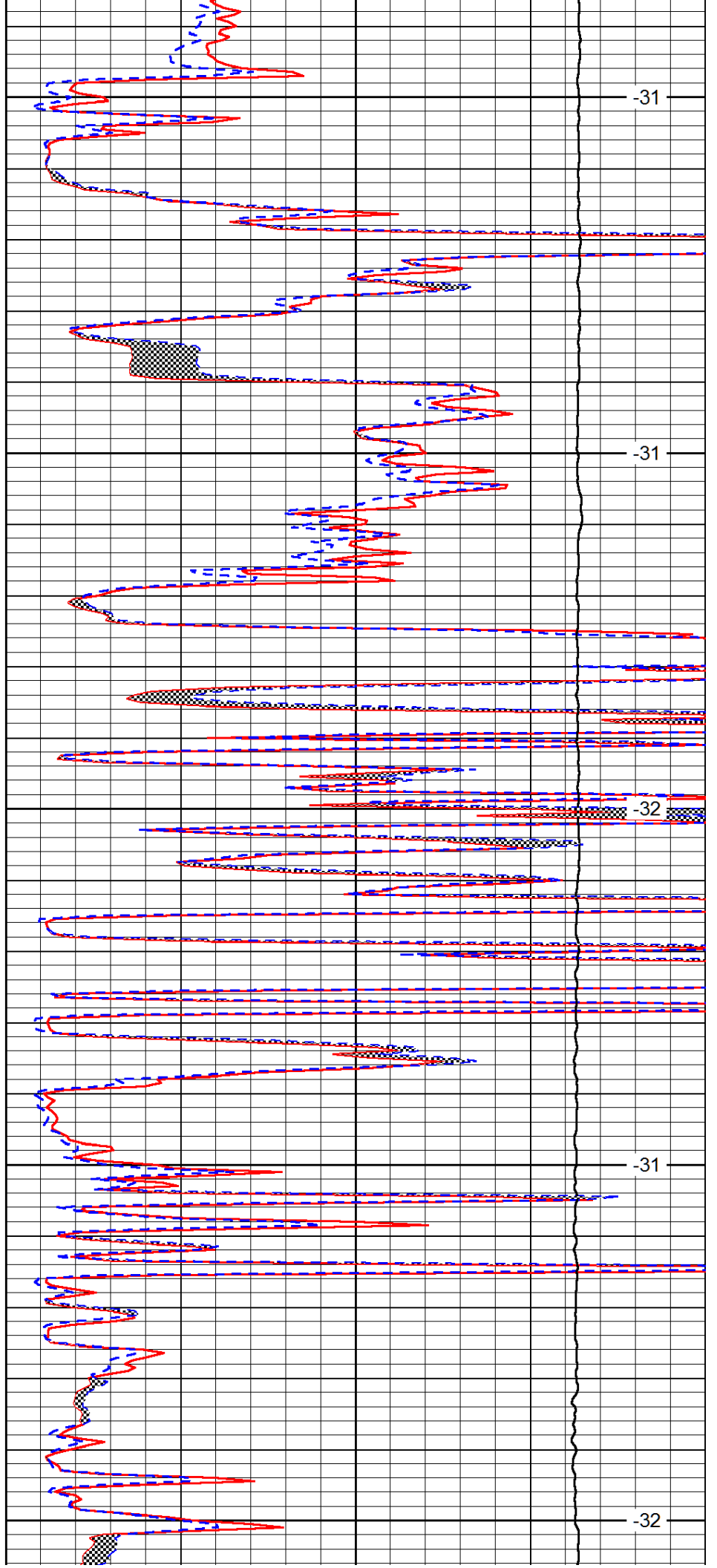
4550

4600

4650

4700

4750



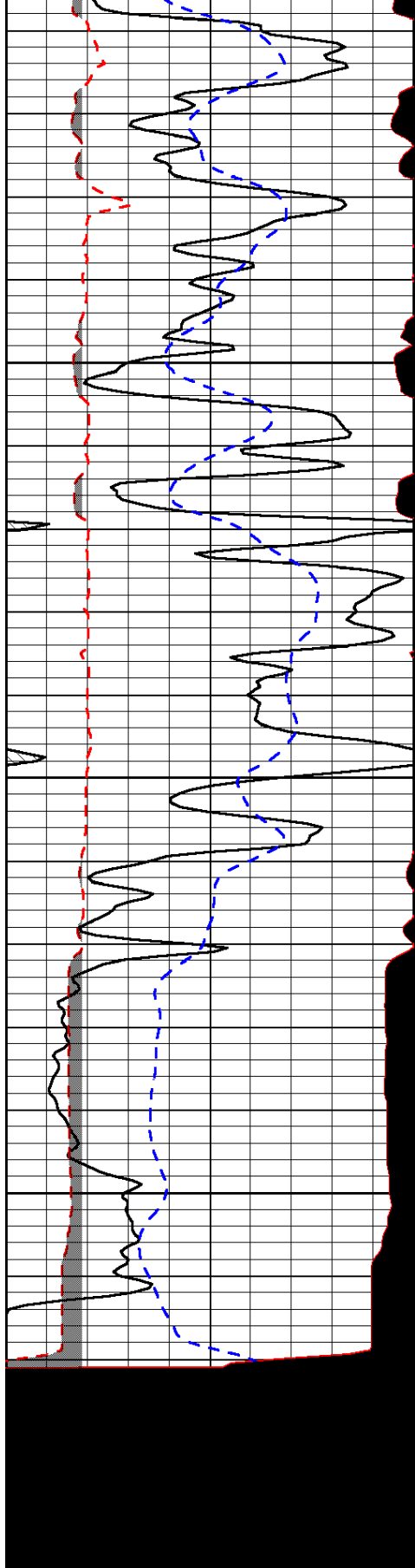
-31

-31

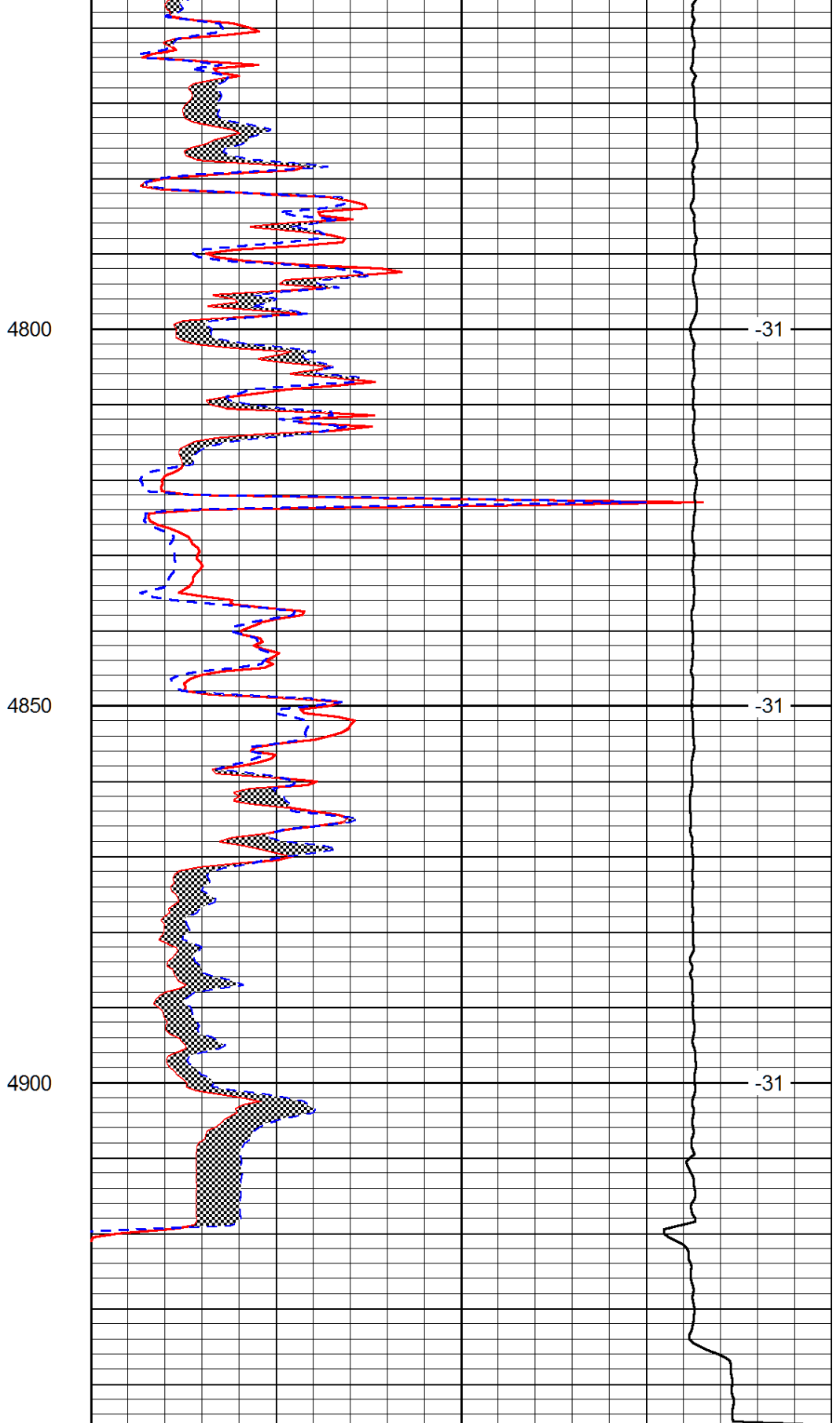
-32

-31

-32



0	Gamma Ray (GAPI)	150
6	MCAL (in)	16
2.875	Mud Cake (in)	7.875
-200	SP (mV)	0



0	Micro Inverse 1 X 1 (Ohm-m)	40
0	Micro Normal 2" (Ohm-m)	40
10000	Line Weight (lb)	0

LSPD
(ft/min)