

**COMPLETION
& PRODUCTION
SERVICES CO.**

**COMPENSATED
DENSITY / NEUTRON
PE LOG**

Company DEUTSCH OIL COMPANY
Well WANETA #1-35
Field WILDCAT
County FORD
State KANSAS

Company DEUTSCH OIL COMPANY
Well WANETA #1-35
Field WILDCAT
County FORD State KANSAS

Location: API #: 15-057-20940

2170' FSL & 1490' FWL

SEC 35 TWP 29S RGE 24W

Permanent Datum GROUND LEVEL Elevation 2572
Log Measured From KELLY BUSHING 10' A.G.L.
Drilling Measured From KELLY BUSHING

Other Services
DIL

Elevation

K.B. 2582

D.F.

G.L. 2572

Date	9-12-14		
Run Number	ONE		
Depth Driller	5490		
Depth Logger	5490		
Bottom Logged Interval	5486		
Top Log Interval	4300		
Casing Driller	641		
Casing Logger	646		
Bit Size	7.875		
Type Fluid in Hole	CHEMICAL MUD		
Density / Viscosity	9.1 / 51		
pH / Fluid Loss	10.5 / 10.4		
Source of Sample	FLOWLINE		
Rm @ Meas. Temp	0.40 @ 80F		
Rmf @ Meas. Temp	0.30 @ 80F		
Rmc @ Meas. Temp	0.48 @ 80F		
Source of Rmf / Rmc	MEASURED		
Rm @ BHT	.246 @ 130F		
Time Circulation Stopped	3 HOURS		
Time Logger on Bottom	6:00 P.M.		
Maximum Recorded Temperature	130F		
Equipment Number	3802		
Location	HAYS, KS.		
Recorded By	RUPP		
Witnessed By	KEITH REAVIS	LOGIN WALKER	

<<< Fold Here >>>

All interpretations are opinions based on inferences from electrical or other measurements and we cannot and do not guarantee the accuracy or correctness of any interpretation, and we shall not, except in the case of gross or willful negligence on our part, be liable or responsible for any loss, costs, damages, or expenses incurred or sustained by anyone resulting from any interpretation made by any of our officers, agents or employees. These interpretations are also subject to our general terms and conditions set out in our current Price Schedule.

Comments

NABORS COMPLETION & PRODUCTION SERVICES
785-628-6395
THANK YOU FOR YOUR BUSINESS
DIRECTIONS: BLOOM, KS., 1W, S INTO.

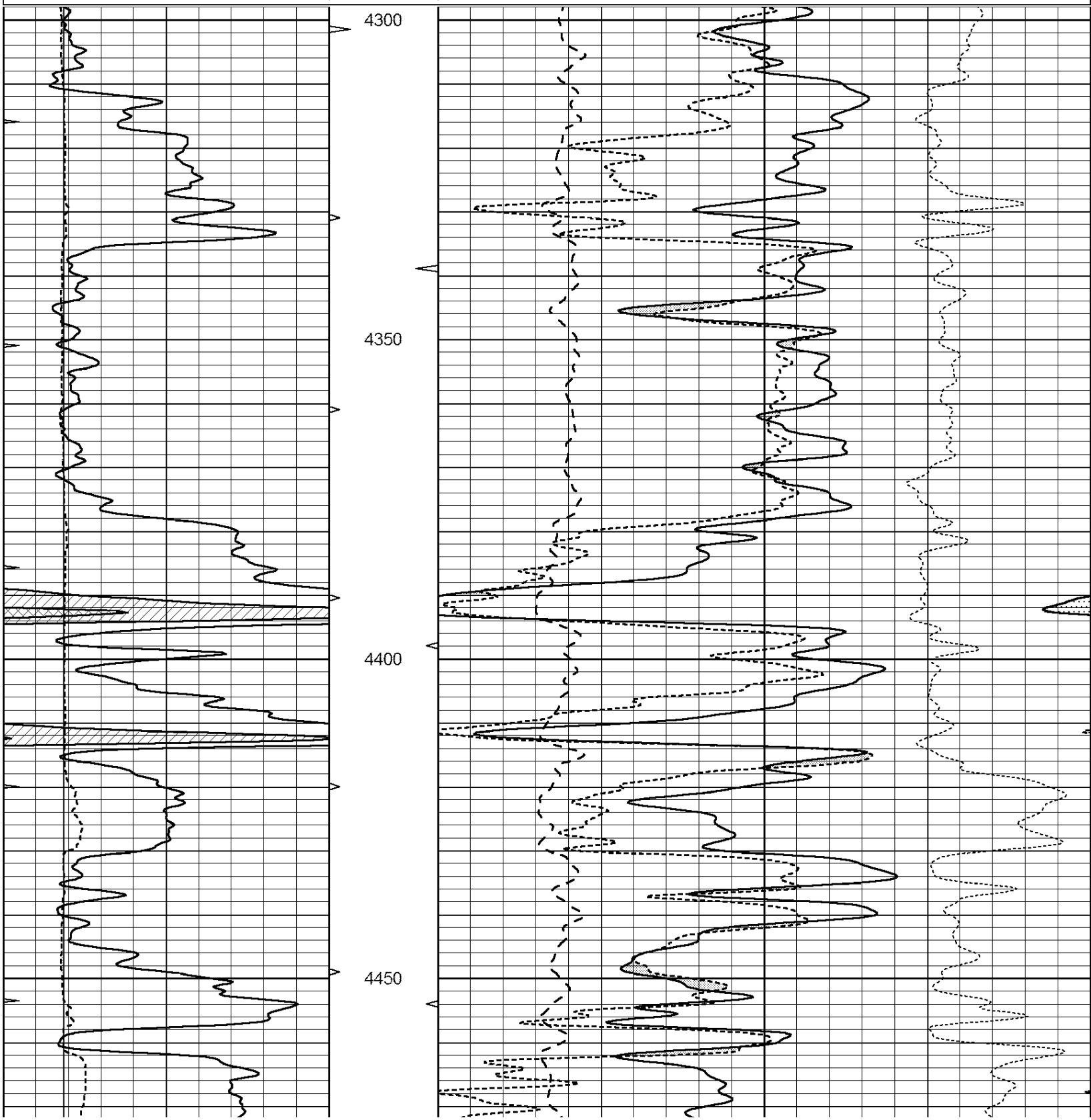


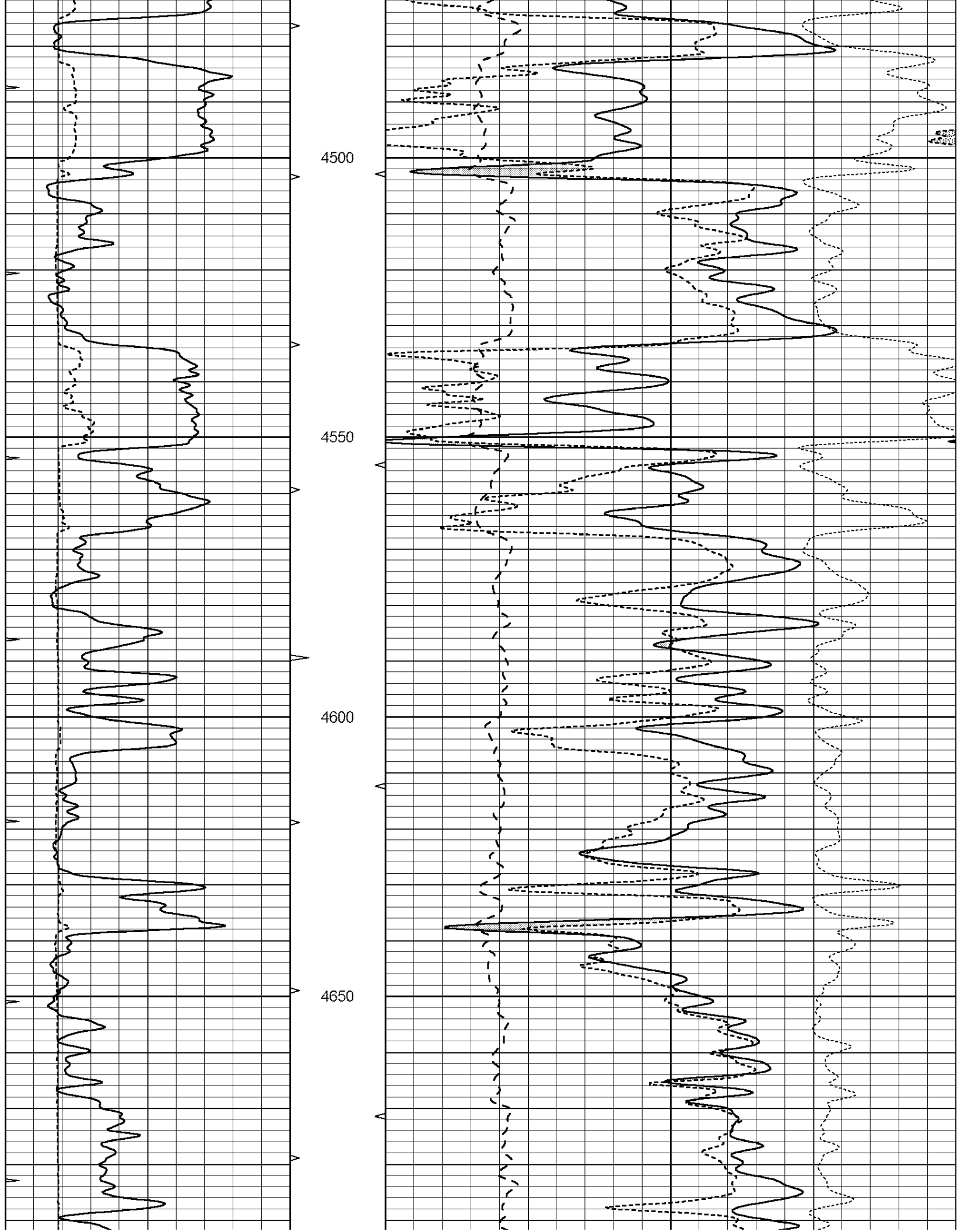
**COMPLETION
& PRODUCTION**

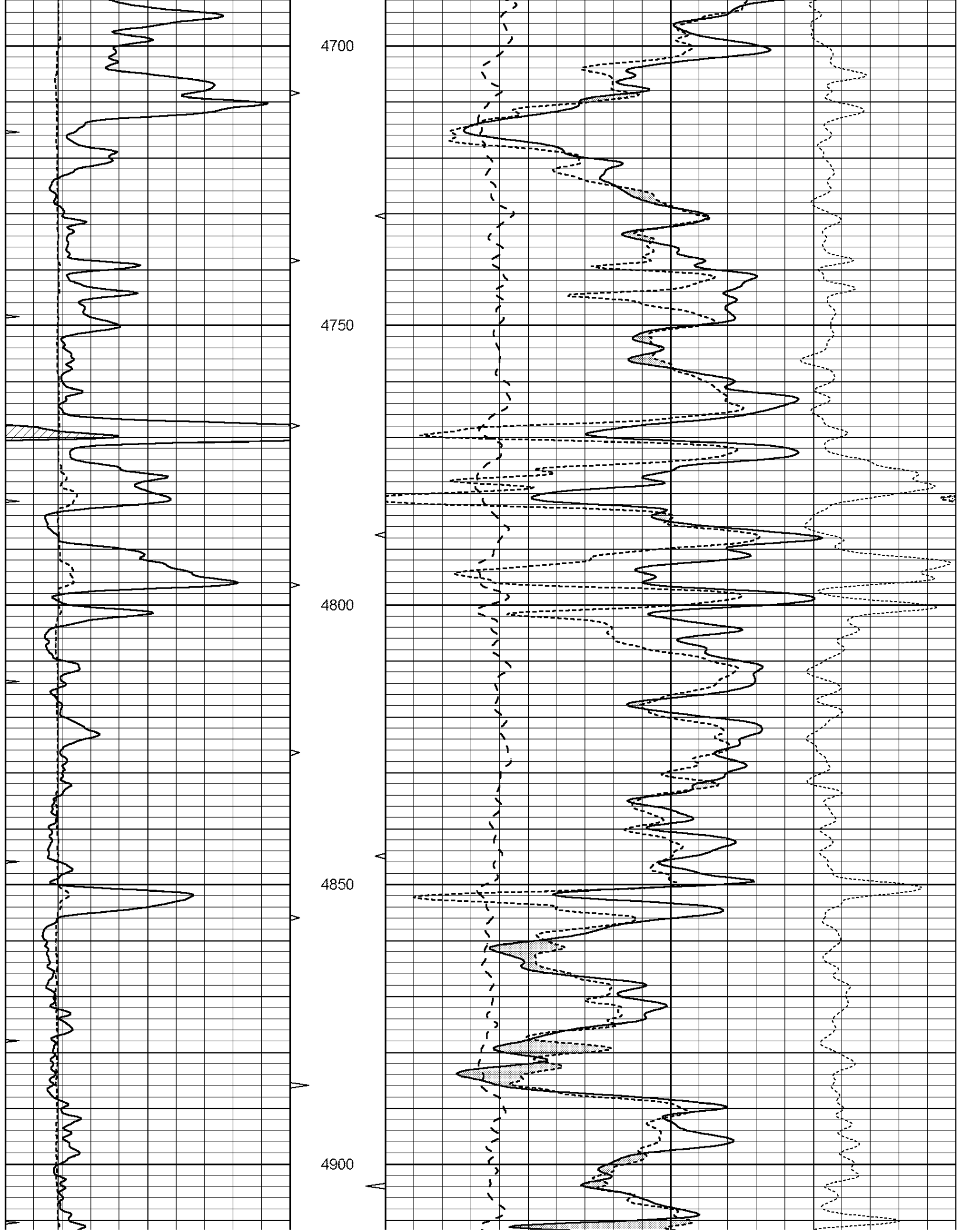
MAIN SECTION

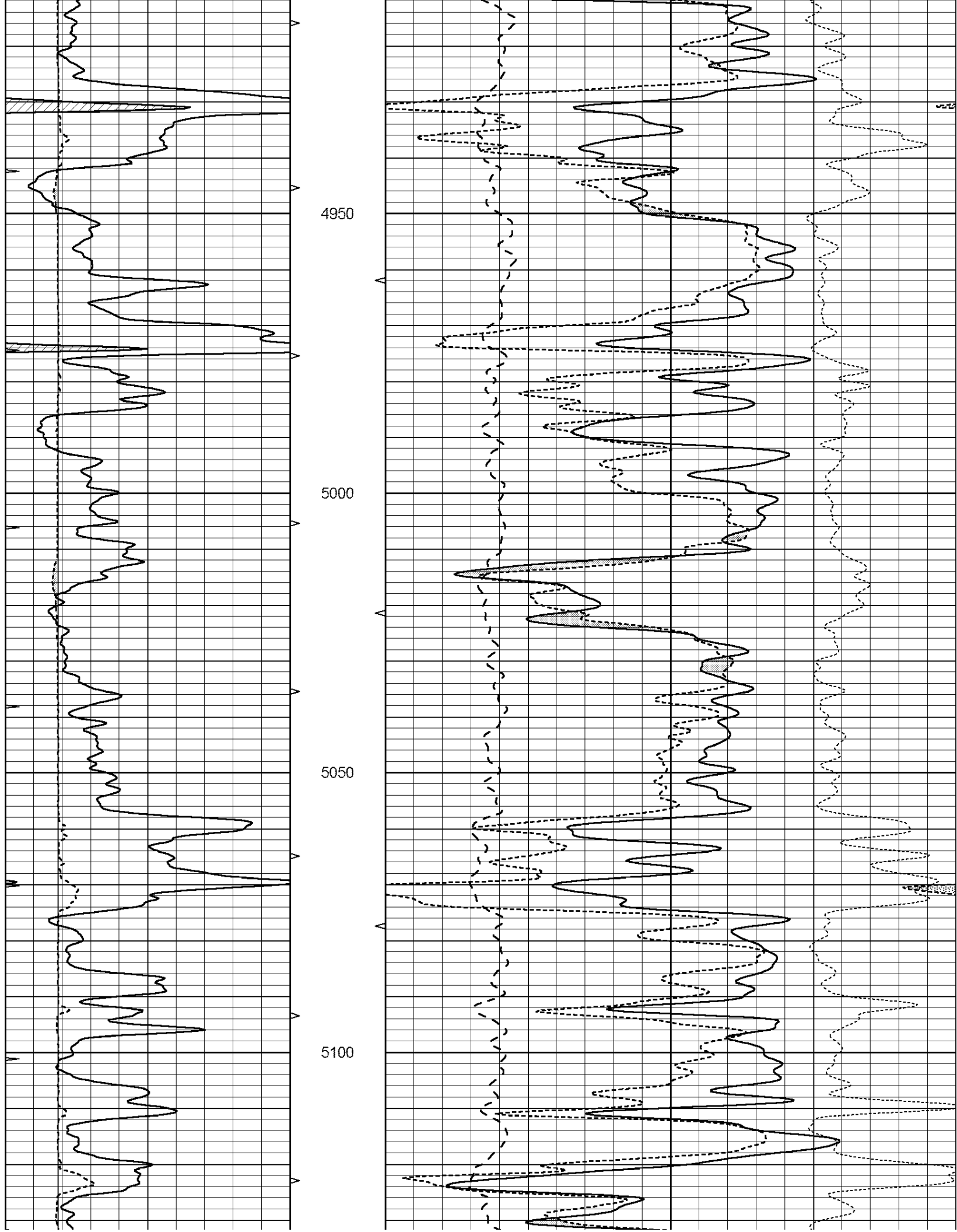
Database File: 25816pdr.db
 Dataset Pathname: pass3.1
 Presentation Format: _ldt_neu
 Dataset Creation: Fri Sep 12 19:48:49 2014 by Calc Open-Cased 090629
 Charted by: Depth in Feet scaled 1:240

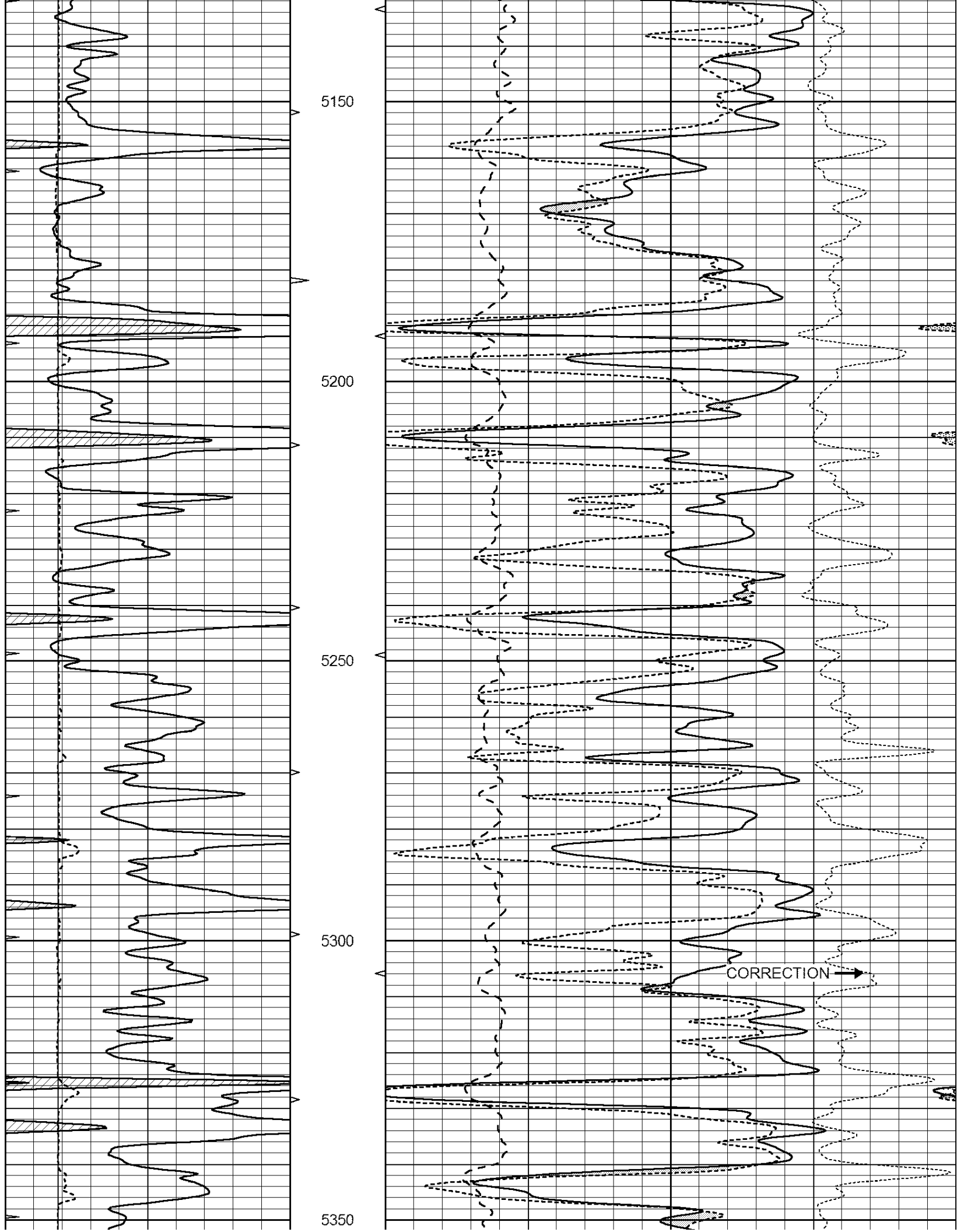
0	GAMMA RAY (GAPI)	150	ABHV	30	COMPENSATED DENSITY (pu)		-10
6	CALIPER (in)	16	10 (ft3)	0	COMPENSATED NEUTRON (pu)		-10
0	MINMK	20	TBHV	0	PE	10	-0.25 CORRECTION (g/cc) 0.25
			0 (ft3)	10			

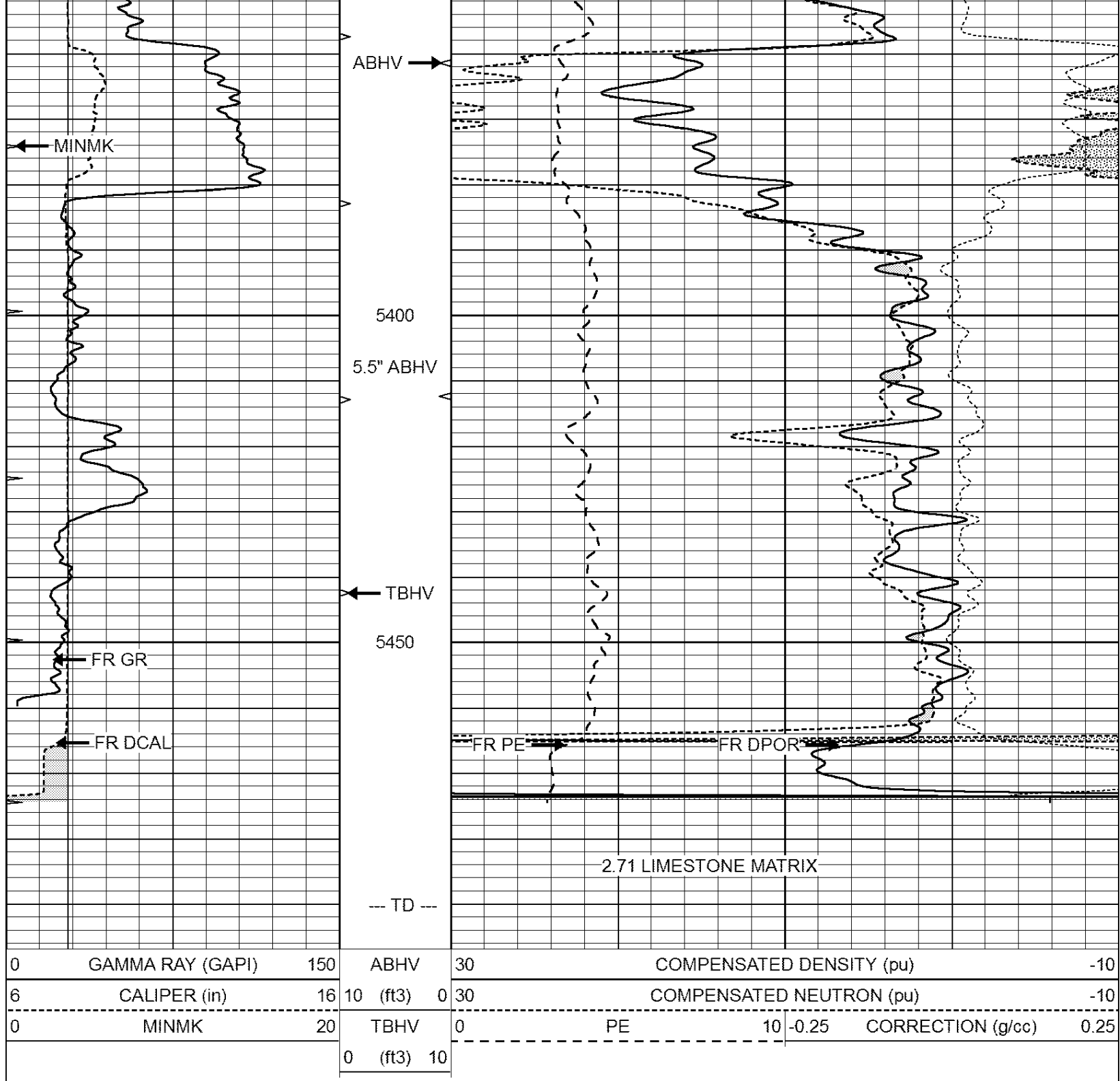










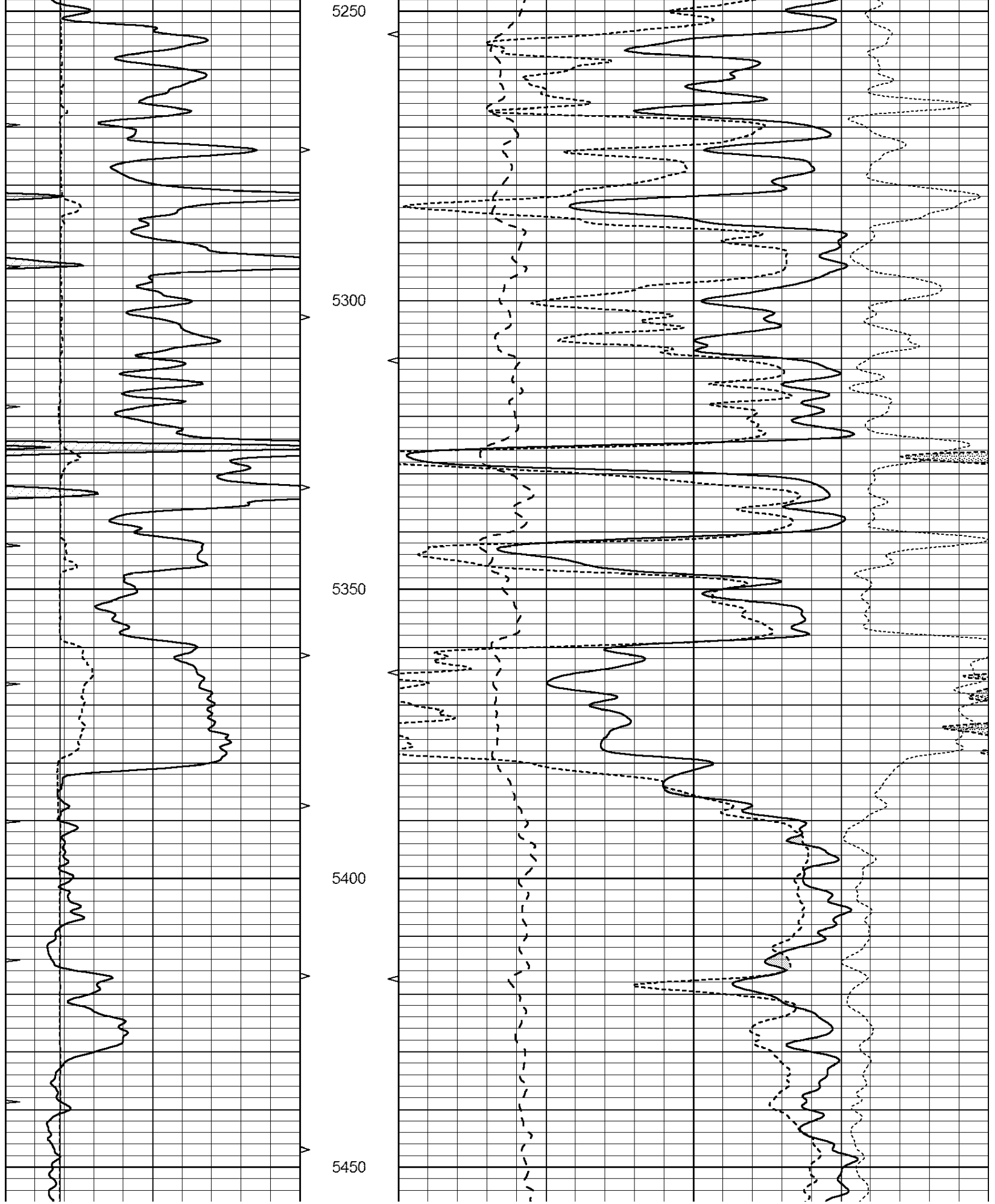


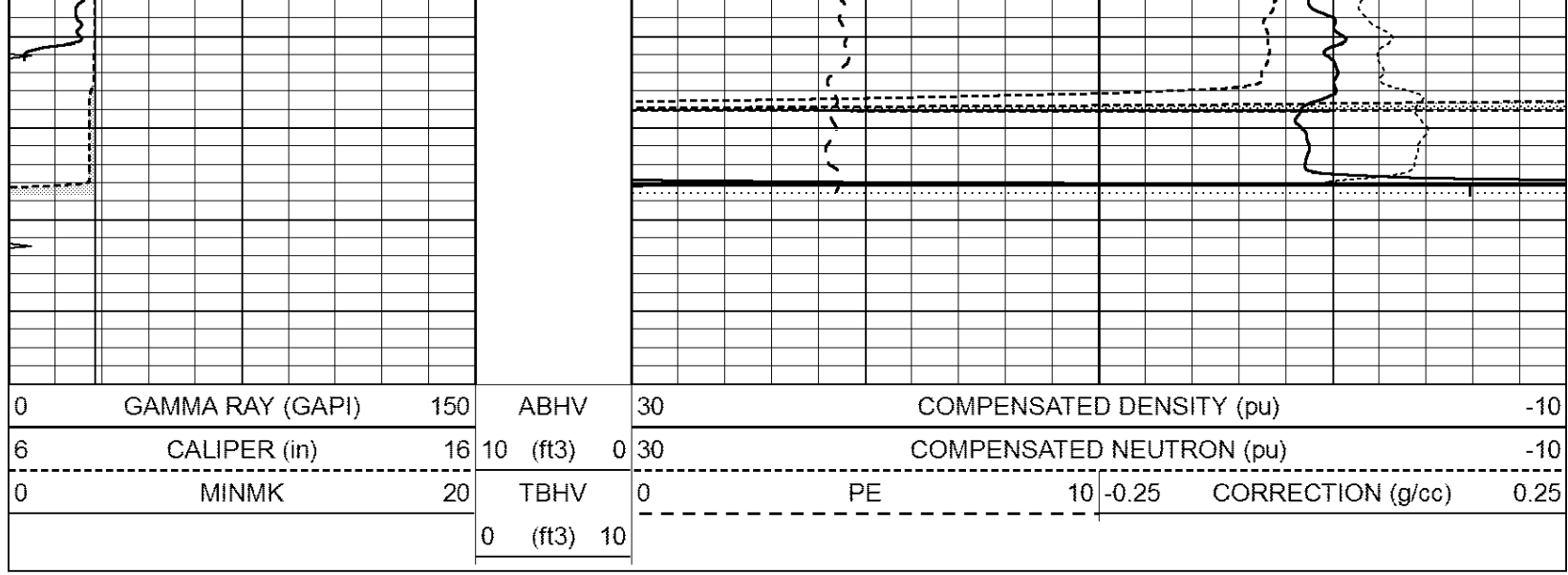
REPEAT SECTION

Database File: 25816pdr.db
 Dataset Pathname: pass2.1
 Presentation Format: _ldt_neu
 Dataset Creation: Fri Sep 12 18:23:30 2014 by Calc Open-Cased 090629
 Charted by: Depth in Feet scaled 1:240

0	GAMMA RAY (GAPI)	150	ABHV	30	COMPENSATED DENSITY (pu)	-10
6	CALIPER (in)	16	10 (ft3)	0 30	COMPENSATED NEUTRON (pu)	-10
0	MINMK	20	TBHV	0	PE	10 -0.25 CORRECTION (g/cc) 0.25
			0 (ft3)	10		

0	MINMK	20	TBHV	0	PE	10	-0.25	CORRECTION (g/cc)	0.25
			0 (ft3)	10					





Calibration Report

Database File: 25816pdn.db
 Dataset Pathname: pass3.1
 Dataset Creation: Fri Sep 12 19:48:49 2014 by Calc Open-Cased 090629

Dual Induction Calibration Report

Serial-Model: PROBE7-DILG
 Surface Cal Performed: Fri Sep 12 18:11:27 2014
 Downhole Cal Performed: Sat Jan 19 19:51:38 2013
 After Survey Verification Performed: Sat Jan 19 19:51:38 2013

Surface Calibration								
Loop:	Readings				References		Results	
	Air	Loop			Air	Loop	m	b
Deep	0.793	0.790	V	0.000	400.000	mmho/m	550.000	4.000
Medium	0.992	1.002	V	0.000	464.000	mmho/m	580.000	-48.000
Internal:	Zero	Cal		Zero	Cal		m	b
Deep	0.041	0.642	V	0.000	400.000	mmho/m	664.874	-27.011
Medium	0.035	0.802	V	0.000	464.000	mmho/m	604.936	-21.367

Downhole Calibration								
	Readings				References		Results	
	Zero	Cal			Zero	Cal	m'	b'
Deep	135384.000	27094.500	mmho/m	135400.000	27082.400	mmho/m	1.000	-19.259
Medium	-47330.100	-9381.740	mmho/m	-47327.100	-9389.280	mmho/m	1.000	-10.154
LL3		7.322	V		1400.000	Ohm-m		
		0.038	V		20.000	Ohm-m		
		-7.273	V		4000.000	mmho-m		

After Survey Verification								
	Readings				Targets		Results	
	Zero	Cal			Zero	Cal	m'	b'
Deep	0.000	0.000	mmho/m	135384.000	27094.500	mmho/m	1.000	0.000
Medium	0.000	0.000	mmho/m	-47330.100	-9381.740	mmho/m	1.000	0.000
LL3		0.000	Ohm-m		1400.000	Ohm-m		
		0.000	Ohm-m		20.000	Ohm-m		
		0.000	mmho-m		4000.000	mmho-m		

Master Calibration		Performed Tue May 27 11:05:38 2014				
	Background	Magnesium	Aluminum	Sandstone		
Window 1	819.4	6916.8	2053.5	6968.1	cps	
Window 2	780.4	5708.6	1783.3	5727.0	cps	
Window 3	656.9	3349.4	1194.5	3336.6	cps	
Window 4	187.3	183.4	186.5	186.2	cps	
Long Space	0.0	4928.2	1002.9	4946.6	cps	
Short Space	1.2	1266.1	819.1	1290.7	cps	
Rho		1.7100	2.5960	1.3800	g/cc	
Pe		0.0000	2.5700	1.5500		
Rib Angle	: 44.7	Rib Slope	: 0.990	Density/Spine Ratio	: 0.537	
Spine Angle	: 74.7	Spine Slope	: 3.655	Spine Intercept	: -17.6	

Before Survey Verification		Performed Wed Dec 31 18:00:00 1969				
Window 1	0.0	0.0	0.0	0.0	cps	
Window 2	0.0	0.0	0.0	0.0	cps	
Window 3	0.0	0.0	0.0	0.0	cps	
Window 4	0.0	0.0	0.0	0.0	cps	
Long Space	0.0	0.0	0.0	0.0	cps	
Short Space	0.0	0.0	0.0	0.0	cps	
Measured Rho		0.0000	0.0000	0.0000	g/cc	
Measured Correction		0.0000	0.0000	0.0000	g/cc	
Measured Pe			0.0000	0.0000		

After Survey Verification		Performed Wed Dec 31 18:00:00 1969				
Window 1	0.0	0.0	0.0	0.0	cps	
Window 2	0.0	0.0	0.0	0.0	cps	
Window 3	0.0	0.0	0.0	0.0	cps	
Window 4	0.0	0.0	0.0	0.0	cps	
Long Space	0.0	0.0	0.0	0.0	cps	
Short Space	0.0	0.0	0.0	0.0	cps	
Measured Rho		0.0000	0.0000	0.0000	g/cc	
Measured Correction		0.0000	0.0000	0.0000	g/cc	
Measured Pe			0.0000	0.0000		

Compensated Neutron Calibration Report

Serial Number: 080620
Tool Model: Probe

PRE-SURVEY VERIFICATION				
Detector	Readings	Measured	Target	
Short Space	cps			
Long Space	cps	pu	pu	

POST-SURVEY VERIFICATION				
Detector	Readings	Measured	Target	
Short Space	cps			
Long Space	cps	pu	pu	

Gamma Ray Calibration Report

Serial Number: 46001
Tool Model: Probe1
Performed: Fri Sep 12 17:20:19 2014

Calibrator Value: 1.0 GAPI

Background Reading: 0.0 cps

Calibrator Reading: 1.0 cps

Sensitivity: 0.2600 GAPI/cps