

MIDWEST SURVEYS
 LOGGING - PERFORATING - CONSULTING SERVICES
 P.O. Box 68, Oskawatomie, KS 66064
 913.755.2128

GAMMA RAY / NEUTRON / CCL

File No. _____

Company **Petroleum Technologies, Inc.**

Well **Sawyer No. 9-1**

Field **Longahecker Southeast**

County **Johnson** State **Kansas**

Location _____

Other Services _____

1760' FSL & 3960' FEL

N/2-S/2-N/2-SW

Sec. 29 Typ. 14s Eye 22e

Permanent Datum GL Elevation NA

Log Measured From GL

Drilling Measured From GL

Elevation K.B. NA D.F. NA G.L. NA

Date 07-23-2014

Run Number One

Depth Driller 990.0

Bottom Logged Interval 986.0

Top Log Interval 20.0

Fluid Level _____

Fluid Level _____

Fluid Level _____

Fluid Level _____

Fluid Level _____

Fluid Level _____

Fluid Level _____

Fluid Level _____

Fluid Level _____

Fluid Level _____

Fluid Level _____

Fluid Level _____

Fluid Level _____

Fluid Level _____

Fluid Level _____

Fluid Level _____

Fluid Level _____

Fluid Level _____

Fluid Level _____

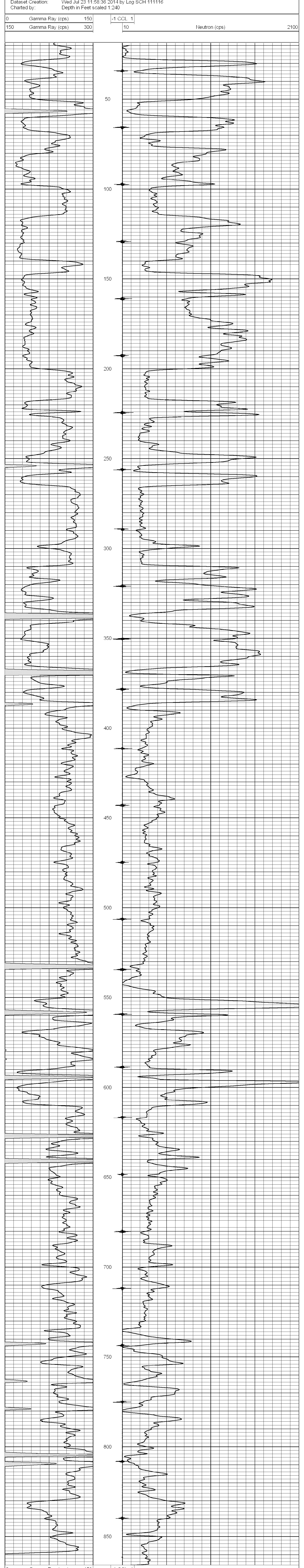
<<< Fold Here >>>

All interpretations are opinions based on inferences from electrical or other measurements and we cannot and do not guarantee the accuracy or correctness of any interpretation, and we shall not, except in the case of gross or willful negligence on our part, be liable or responsible for any loss, costs, damages, or expenses incurred or sustained by anyone resulting from any interpretation made by any of our officers, agents or employees. These interpretations are also subject to our general terms and conditions set out in our current Price Schedule.

Comments

Drilling Contractor :
 Evans Energy & Development, Inc.

Database File: sawyer 9i.db
 Dataset Pathname: pass1
 Presentation Format: gr-n-ccl
 Dataset Creation: Wed Jul 23 11:58:36 2014 by Log SCH 111116
 Charted by: Depth in Feet scaled 1:240



0 Gamma Ray (cps) 150
 150 Gamma Ray (cps) 300
 -1 CCL 1
 10 Neutron (cps) 2100