



**COMPLETION
& PRODUCTION
SERVICES CO.**

**MICRO
LOG**

Company CHARTER ENERGY, INC.
Well LOSEY TRUST #1
Field
County GOVE
State KANSAS

Company CHARTER ENERGY, INC.
Well LOSEY TRUST #1
Field
County GOVE State KANSAS

Location: API # : 15-063-22225-0000
1905' FSL & 1423' FWL
NW SW NE SW
SEC 13 TWP 13S RGE 30W
Permanent Datum GROUND LEVEL Elevation 2841
Log Measured From KELLY BUSHING 6' A.G.L.
Drilling Measured From KELLY BUSHING
Other Services
CDL/CNL
DIL/SON
Elevation
K.B. 2847
D.F. 2845
G.L. 2841

Date	10/17/14
Run Number	TWO
Depth Driller	4600
Depth Logger	4600
Bottom Logged Interval	4582
Top Log Interval	3700
Casing Driller	8 5/8" @ 260
Casing Logger	259
Bit Size	7 7/8"
Type Fluid in Hole	CHEMICAL MUD
Density / Viscosity	9.6/59
pH / Fluid Loss	9.0/8.0
Source of Sample	FLOWLINE
Rm @ Meas. Temp	1.20 @ 70F
Rmt @ Meas. Temp	.90 @ 70F
Rmc @ Meas. Temp	1.44 @ 70F
Source of Rmf / Rmc	MEASUREMENT
Rm @ BHT	.69 @ 121F
Time Circulation Stopped	2 HOURS
Time Logger on Bottom	7:15 P.M.
Maximum Recorded Temperature	121F
Equipment Number	4010
Location	HAYS, KANSAS
Recorded By	JASON CAPPELLUCCI
Witnessed By	KURT TALBOTT

<<< Fold Here >>>

All interpretations are opinions based on inferences from electrical or other measurements and we cannot and do not guarantee the accuracy or correctness of any interpretation, and we shall not, except in the case of gross or willful negligence on our part, be liable or responsible for any loss, costs, damages, or expenses incurred or sustained by anyone resulting from any interpretation made by any of our officers, agents or employees. These interpretations are also subject to our general terms and conditions set out in our current Price Schedule.

Comments

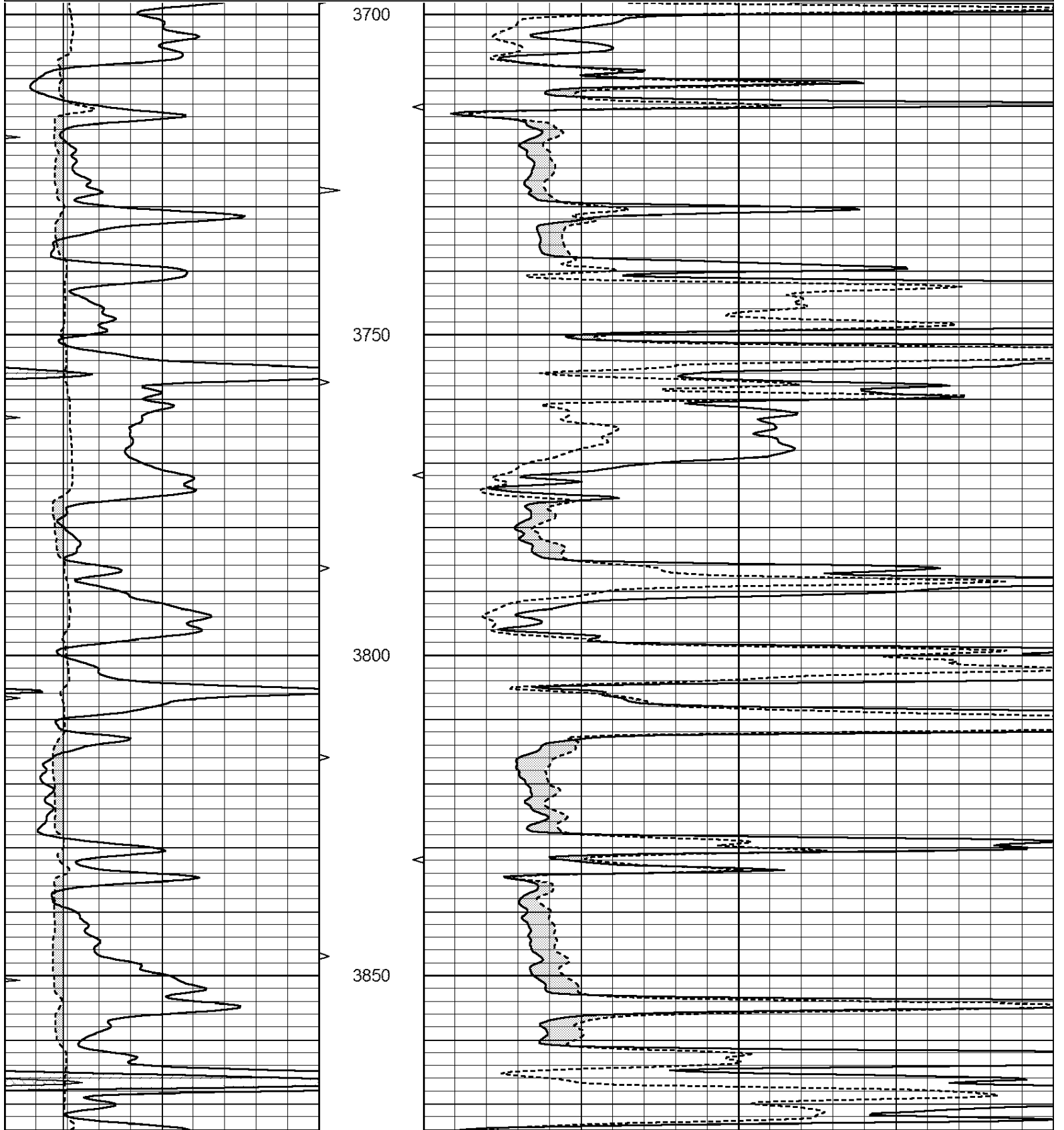
THANK YOU FOR USING NABORS, HAYS, KS. (785) 628-6395
DIRECTIONS:
GOVE, KS. - 6 WEST TO RD. 34 - 2 1/2 SOUTH - WEST INTO ON TOP OF THE HILL

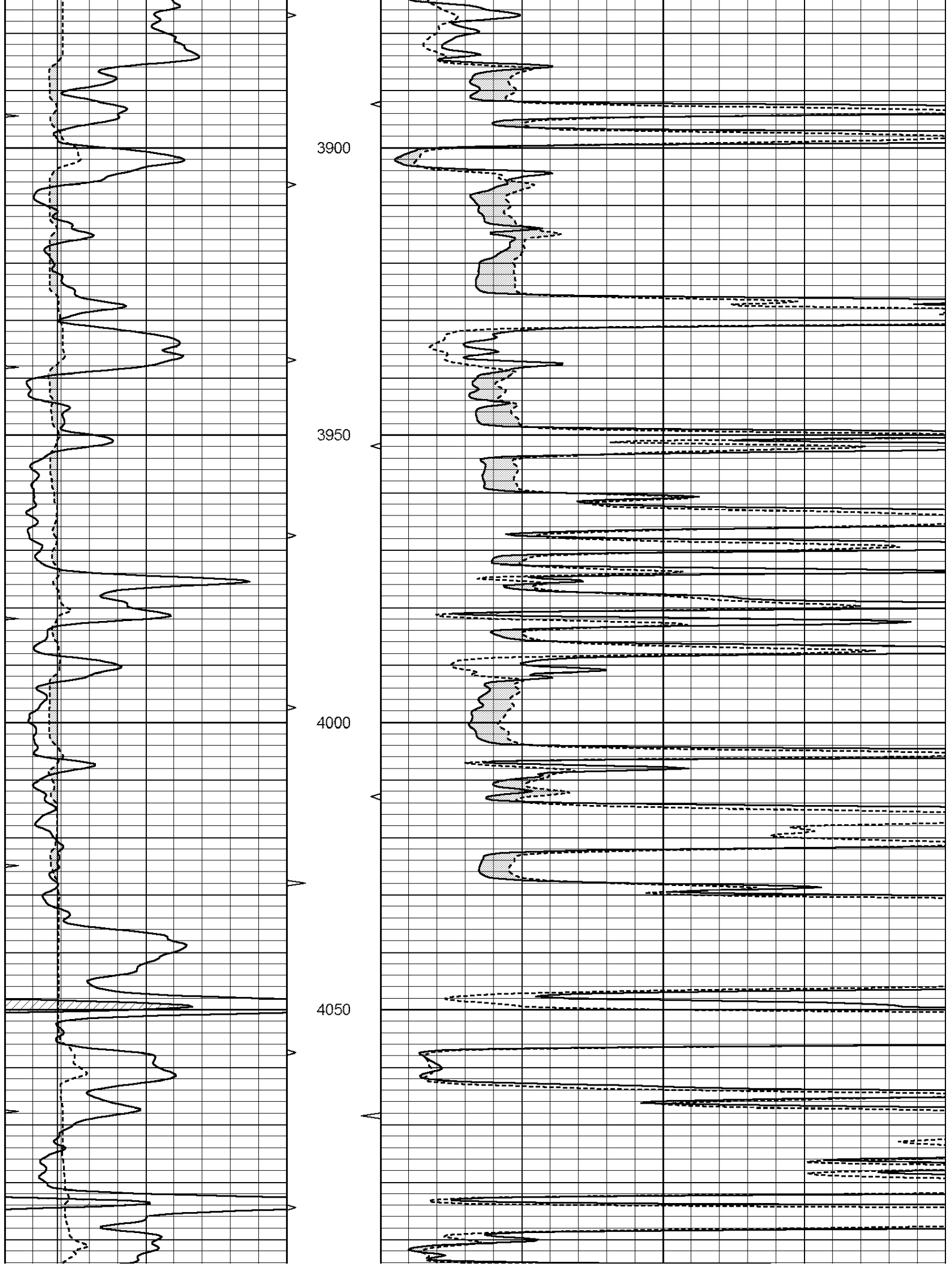


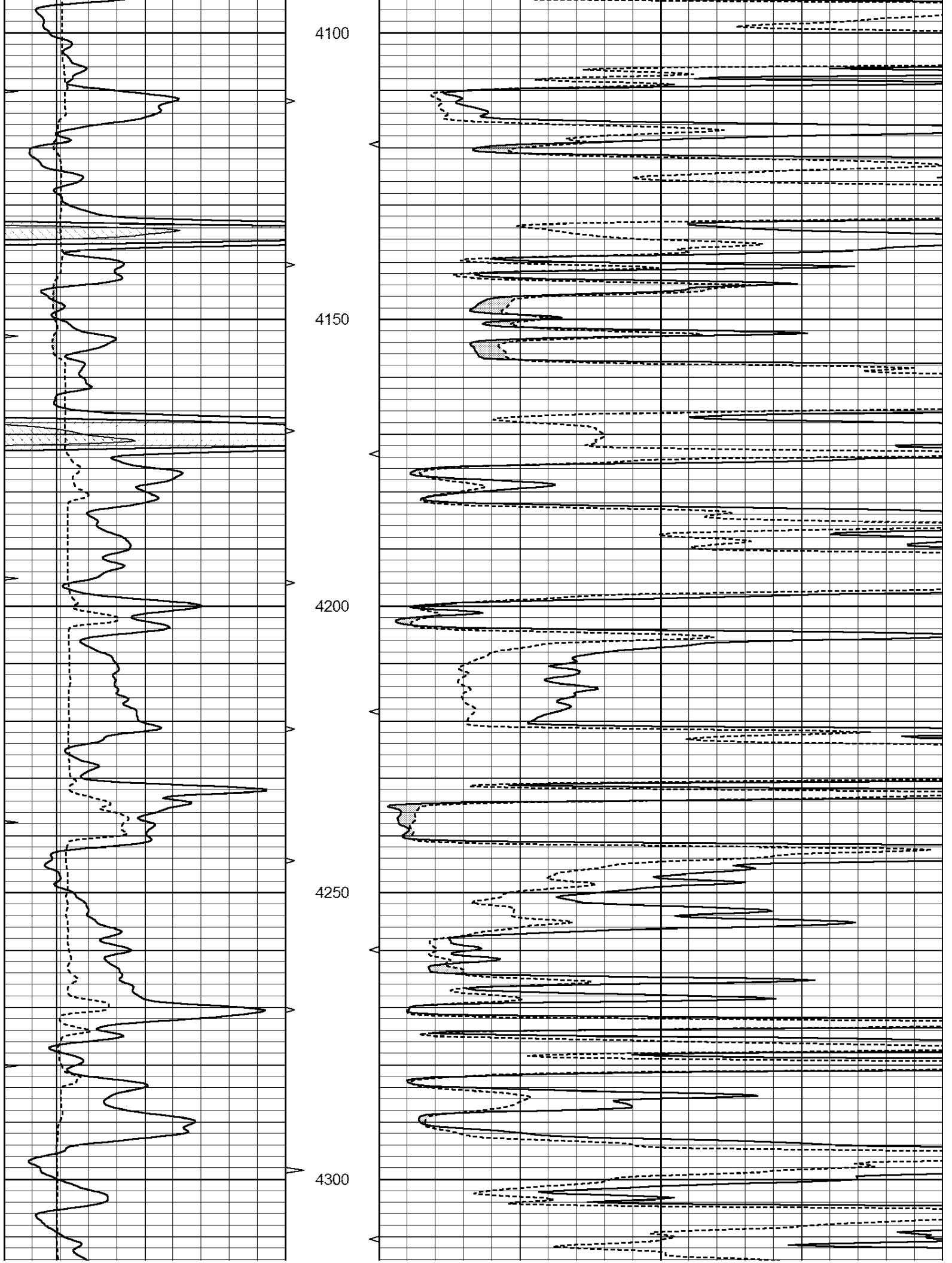
MAIN SECTION

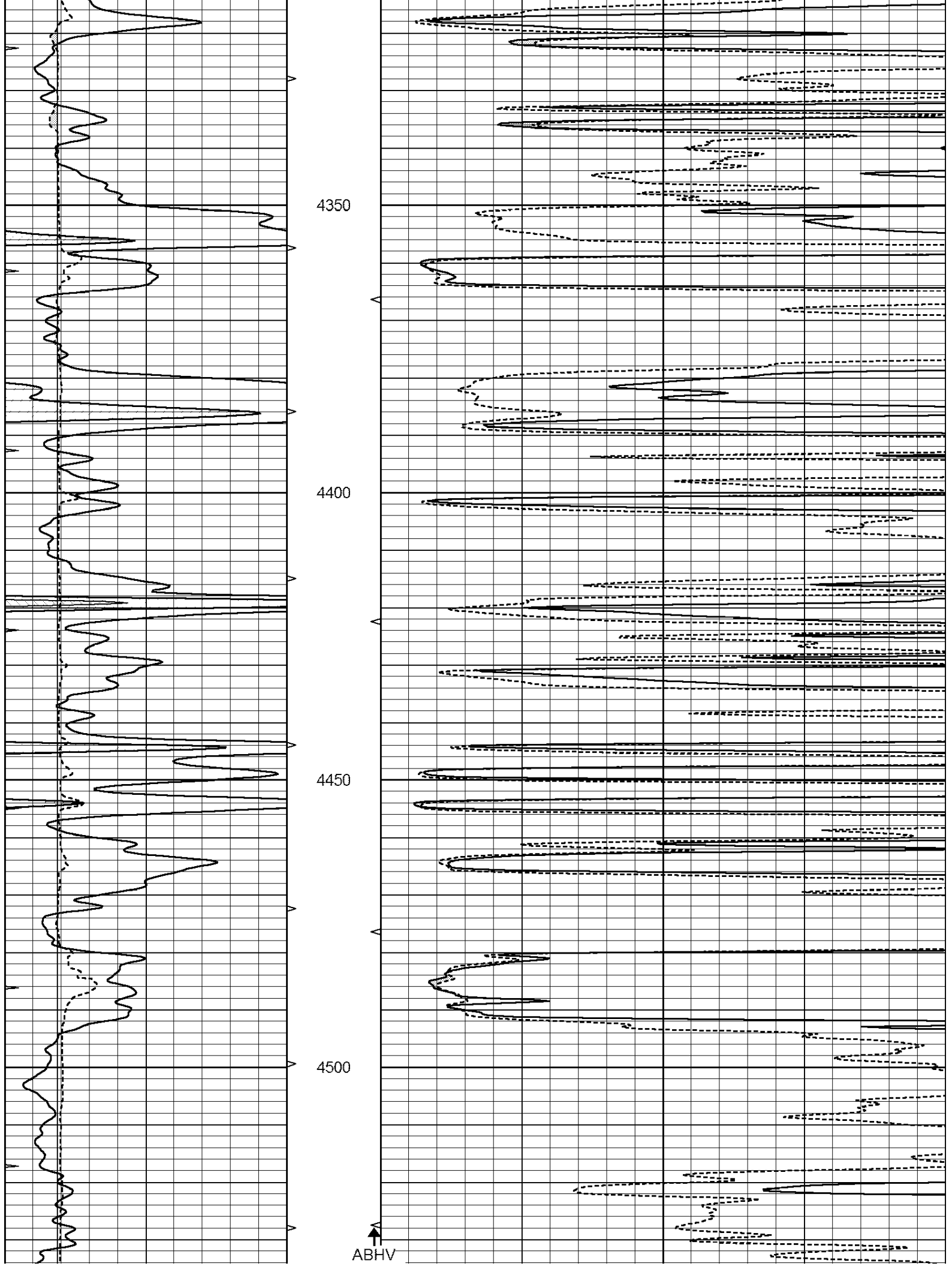
Database File: 26210ddn.db
 Dataset Pathname: pass10.1
 Presentation Format: _micro
 Dataset Creation: Sat Oct 18 00:19:54 2014 by Calc Open-Cased 090629
 Charted by: Depth in Feet scaled 1:240

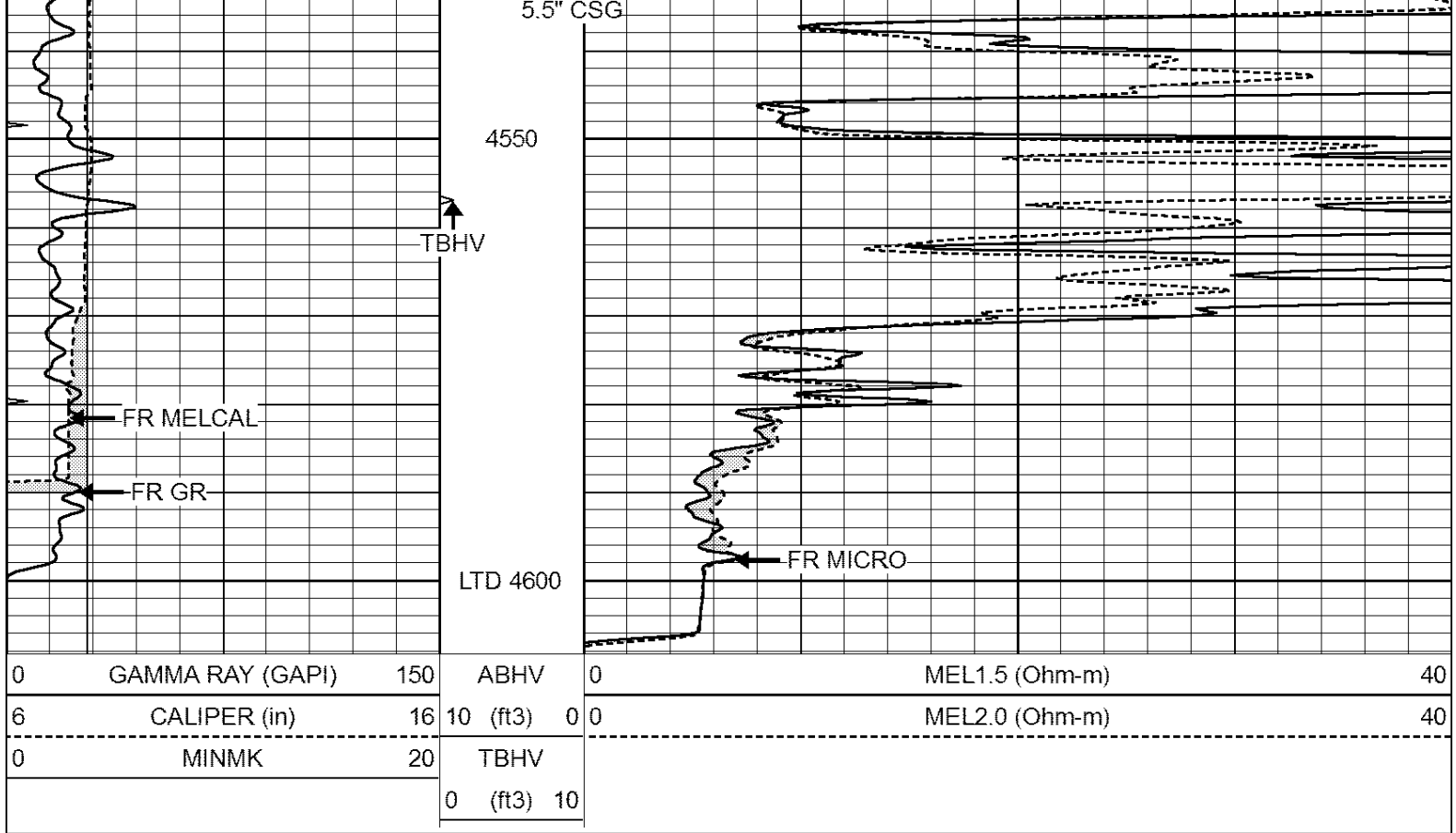
0	GAMMA RAY (GAPI)	150	ABHV	0	MEL1.5 (Ohm-m)	40
6	CALIPER (in)	16	10 (ft3)	0	MEL2.0 (Ohm-m)	40
0	MINMK	20	TBHV			
			0 (ft3)	10		







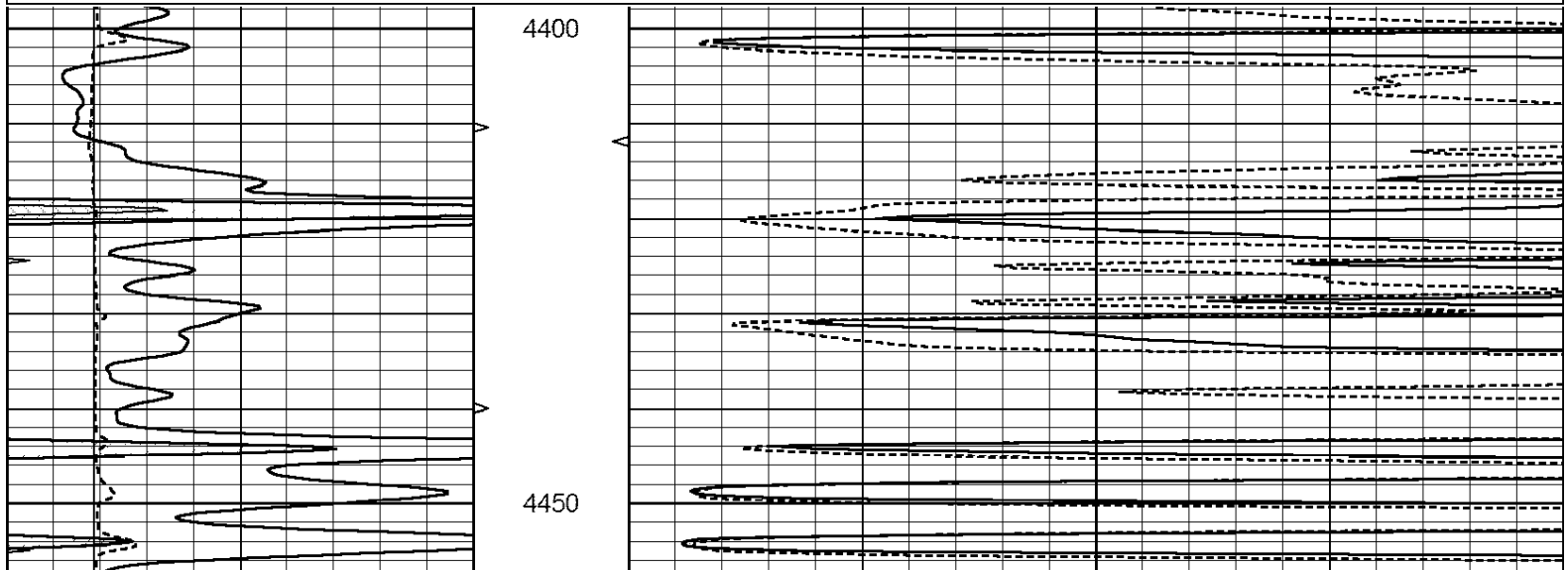


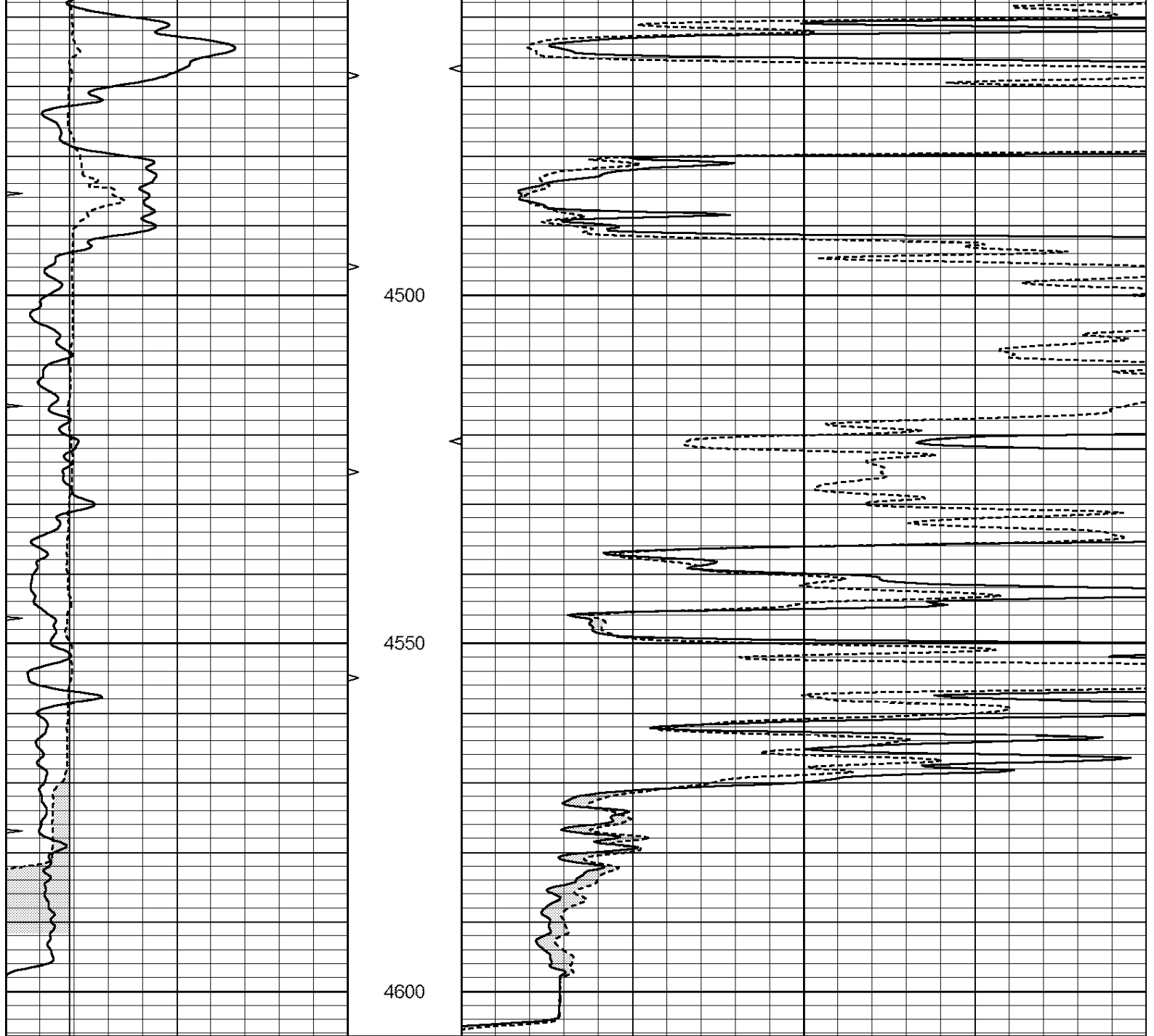


REPEAT SECTION

Database File: 26210ddn.db
 Dataset Pathname: pass9.1
 Presentation Format: _micro
 Dataset Creation: Sat Oct 18 00:12:55 2014 by Calc Open-Cased 090629
 Charted by: Depth in Feet scaled 1:240

0	GAMMA RAY (GAPI)	150	ABHV	0	MEL1.5 (Ohm-m)	40
6	CALIPER (in)	16	10 (ft3)	0	MEL2.0 (Ohm-m)	40
0	MINMK	20	TBHV			
			0 (ft3)	10		





0	GAMMA RAY (GAPI)	150	ABHV	0	MEL1.5 (Ohm-m)	40
6	CALIPER (in)	16	10 (ft3)	0	MEL2.0 (Ohm-m)	40
0	MINMK	20	TBHV			
			0 (ft3)	10		

Calibration Report

Database File: 26210ddn.db
 Dataset Pathname: pass9.1
 Dataset Creation: Sat Oct 18 00:12:55 2014 by Calc Open-Cased 090629

MICRO Calibration Report

Serial Number: MICRO6
 Tool Model: PROBE
 Performed: Tue Aug 26 10:52:38 2014

Caliper Calibration: Gain=5.542 Offset=0.850

Low Cal High Cal

References	8.000	14.000
Readings	1.431	2.513

1.5" Calibration:	Gain=38.075	Offset=-1.000
References	Low Cal	High Cal
Readings	0.000	20.000
	0.004	1.196

2" Calibration:	Gain=45.000	Offset=-0.300
References	Low Cal	High Cal
Readings	0.000	20.000
	0.006	0.913

Gamma Ray Calibration Report

Serial Number:	GR6	
Tool Model:	OPEN	
Performed:	Sun Aug 17 15:23:09 2014	

Calibrator Value:	150.0	GAPI
-------------------	-------	------

Background Reading:	0.0	cps
Calibrator Reading:	276.0	cps

Sensitivity:	0.7000	GAPI/cps
--------------	--------	----------