



**COMPLETION
& PRODUCTION
SERVICES CO.**

**COMPENSATED
DENSITY/NEUTRON
LOG**

Company CHARTER ENERGY, INC.
Well LOSEY TRUST #1
Field
County GOVE
State KANSAS

Company CHARTER ENERGY, INC.
Well LOSEY TRUST #1
Field
County GOVE State KANSAS

Location: API # : 15-063-22225-0000
1905' FSL & 1423' FWL
NW SW NE SW
SEC 13 TWP 13S RGE 30W
Permanent Datum GROUND LEVEL Elevation 2841
Log Measured From KELLY BUSHING 6' A.G.L.
Drilling Measured From KELLY BUSHING
Other Services
DIL/MEL
SON
Elevation
K.B. 2847
D.F. 2845
G.L. 2841

Date	10/17/14		
Run Number	ONE		
Depth Driller	4600		
Depth Logger	4600		
Bottom Logged Interval	4576		
Top Log Interval	3700		
Casing Driller	8 5/8" @ 260		
Casing Logger	259		
Bit Size	7 7/8"		
Type Fluid in Hole	CHEMICAL MUD	CHLORIDES 4000 PPM	
Density / Viscosity	9.6/59		
pH / Fluid Loss	9.0/8.0		
Source of Sample	FLOWLINE		
Rm @ Meas. Temp	1.20 @ 70F		
Rmt @ Meas. Temp	.90 @ 70F		
Rmc @ Meas. Temp	1.44 @ 70F		
Source of Rmf / Rmc	MEASUREMENT		
Rm @ BHT	.69 @ 121F		
Time Circulation Stopped	2 HOURS		
Time Logger on Bottom	7:15 P.M.		
Maximum Recorded Temperature	121F		
Equipment Number	4010		
Location	HAYS, KANSAS		
Recorded By	JASON CAPPELLUCCI		
Witnessed By	KURT TALBOTT		

<<< Fold Here >>>

All interpretations are opinions based on inferences from electrical or other measurements and we cannot and do not guarantee the accuracy or correctness of any interpretation, and we shall not, except in the case of gross or willful negligence on our part, be liable or responsible for any loss, costs, damages, or expenses incurred or sustained by anyone resulting from any interpretation made by any of our officers, agents or employees. These interpretations are also subject to our general terms and conditions set out in our current Price Schedule.

Comments

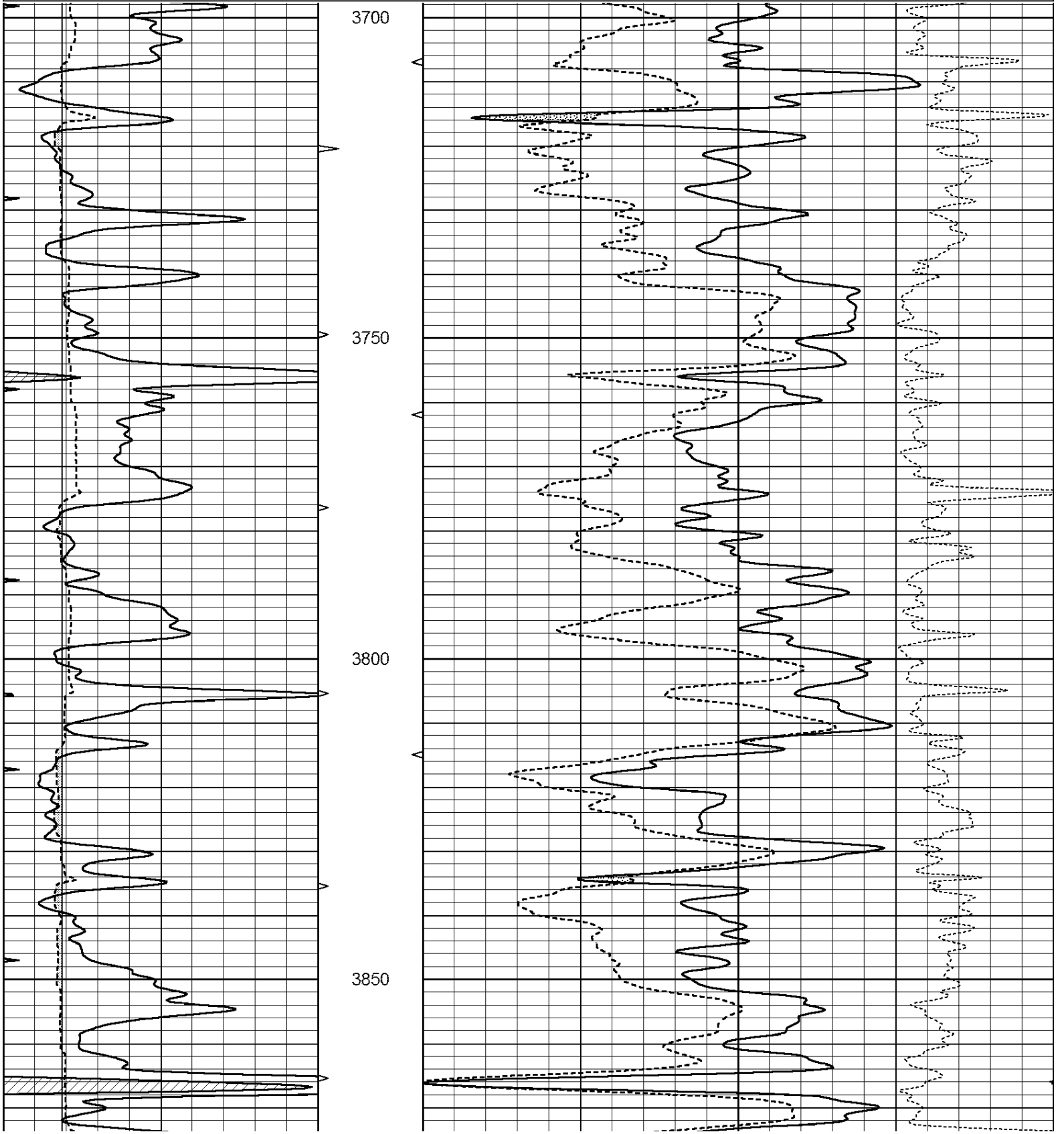
THANK YOU FOR USING NABORS, HAYS, KS. (785) 628-6395
DIRECTIONS:
GOVE, KS. - 6 WEST TO RD. 34 - 2 1/2 SOUTH - WEST INTO ON TOP OF THE HILL

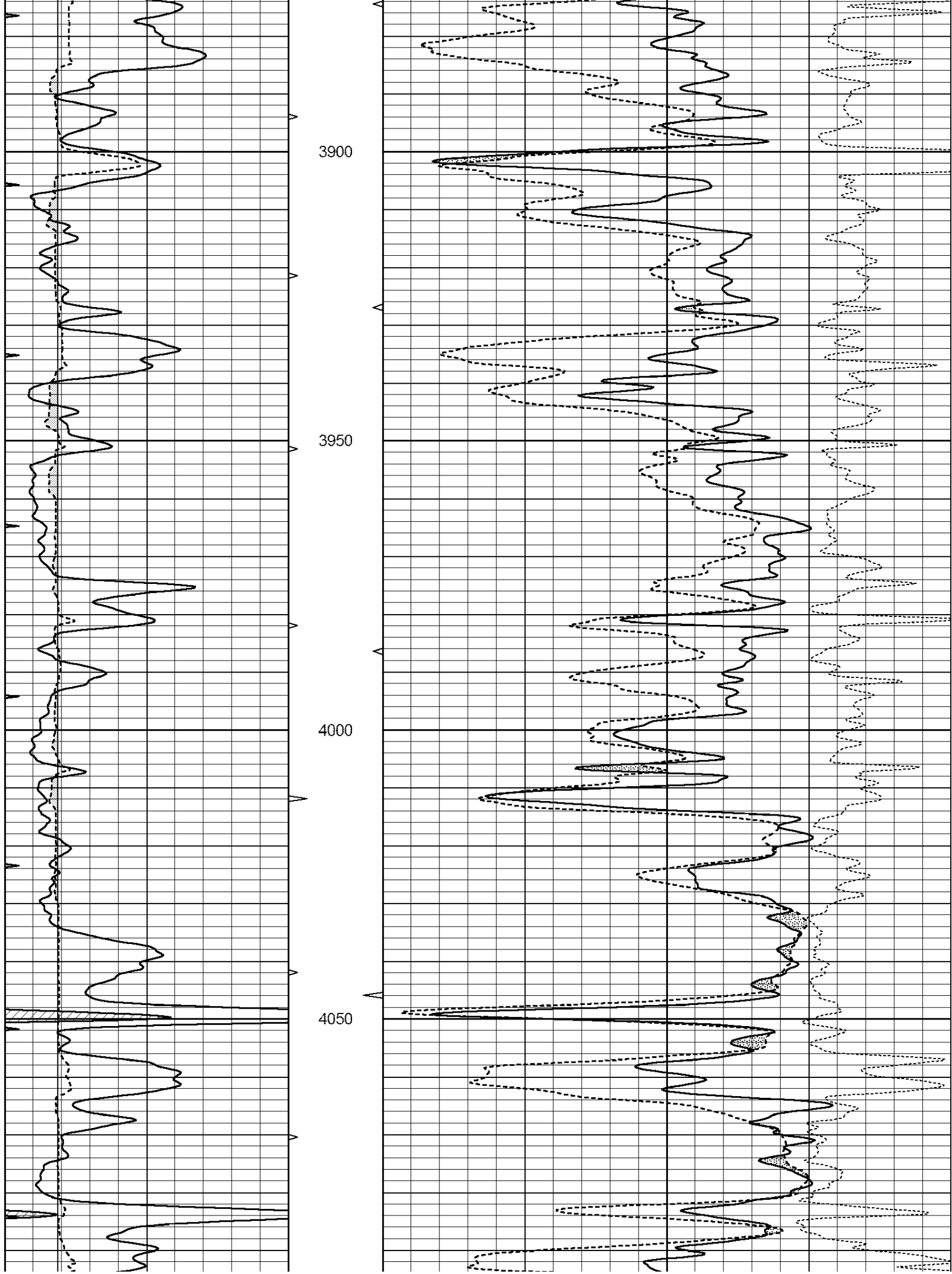


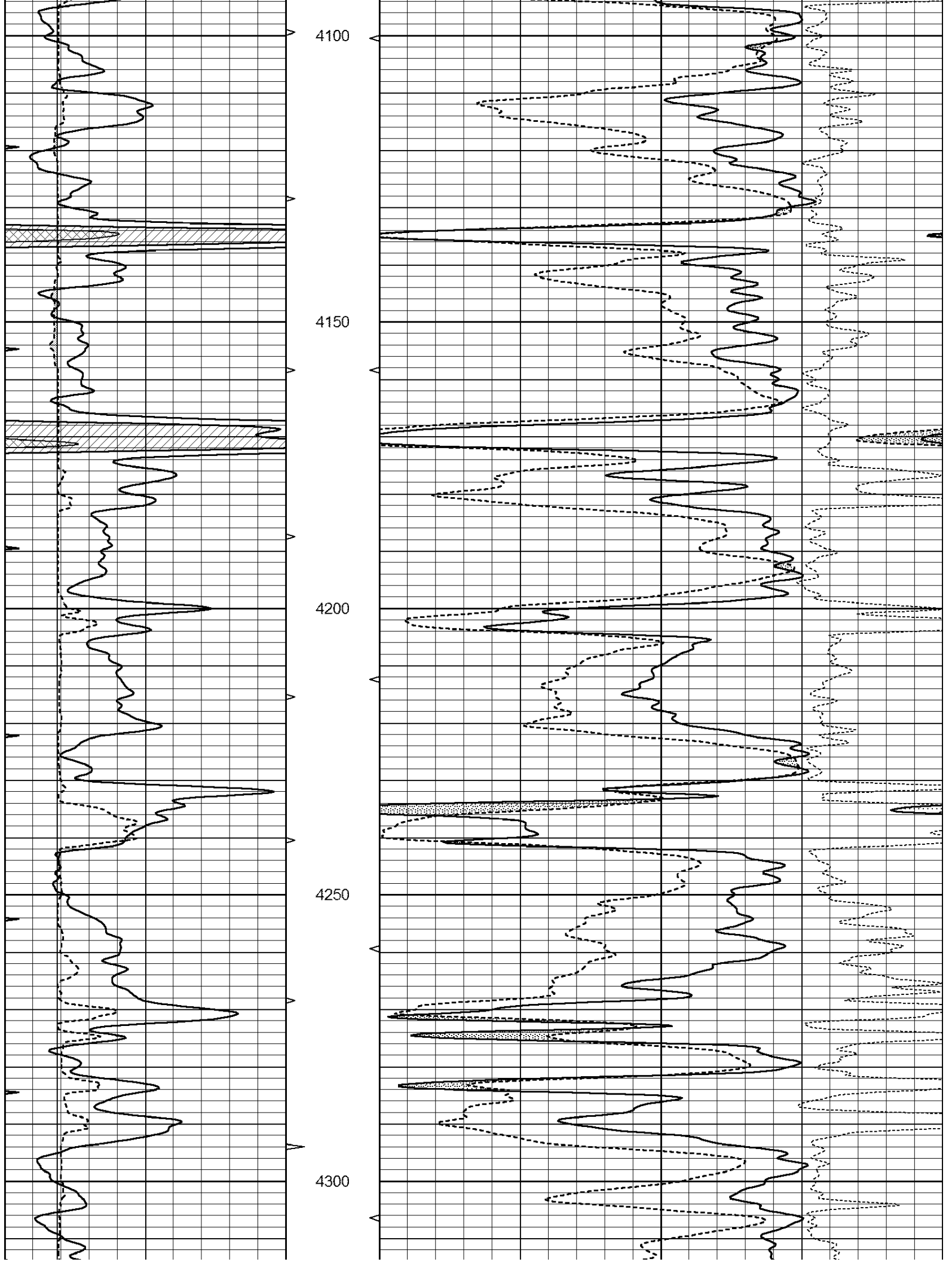
MAIN SECTION

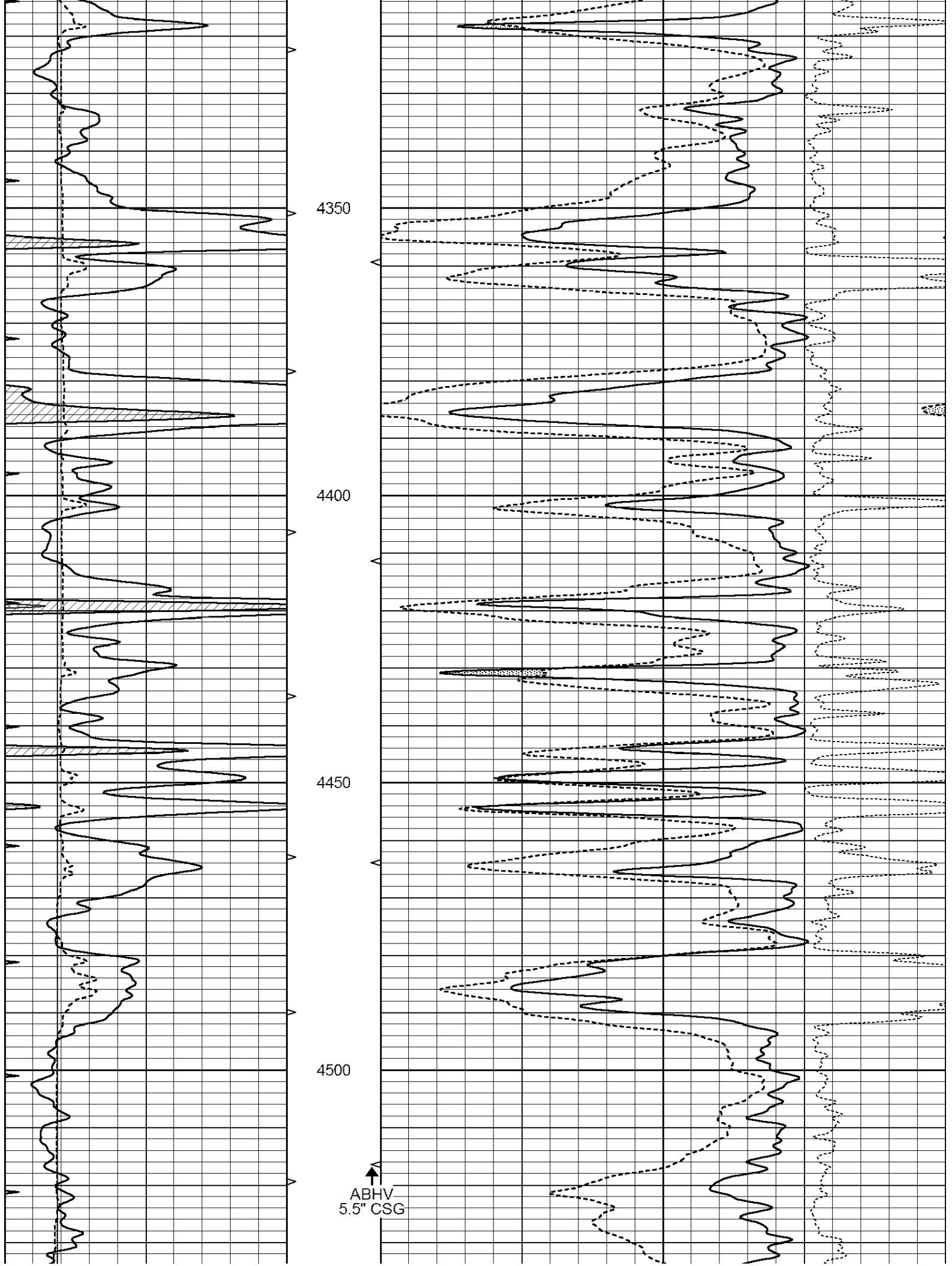
Database File: 26210ddn.db
 Dataset Pathname: pass3.1
 Presentation Format: den_neu
 Dataset Creation: Fri Oct 17 20:05:06 2014 by Calc Open-Cased 090629
 Charted by: Depth in Feet scaled 1:240

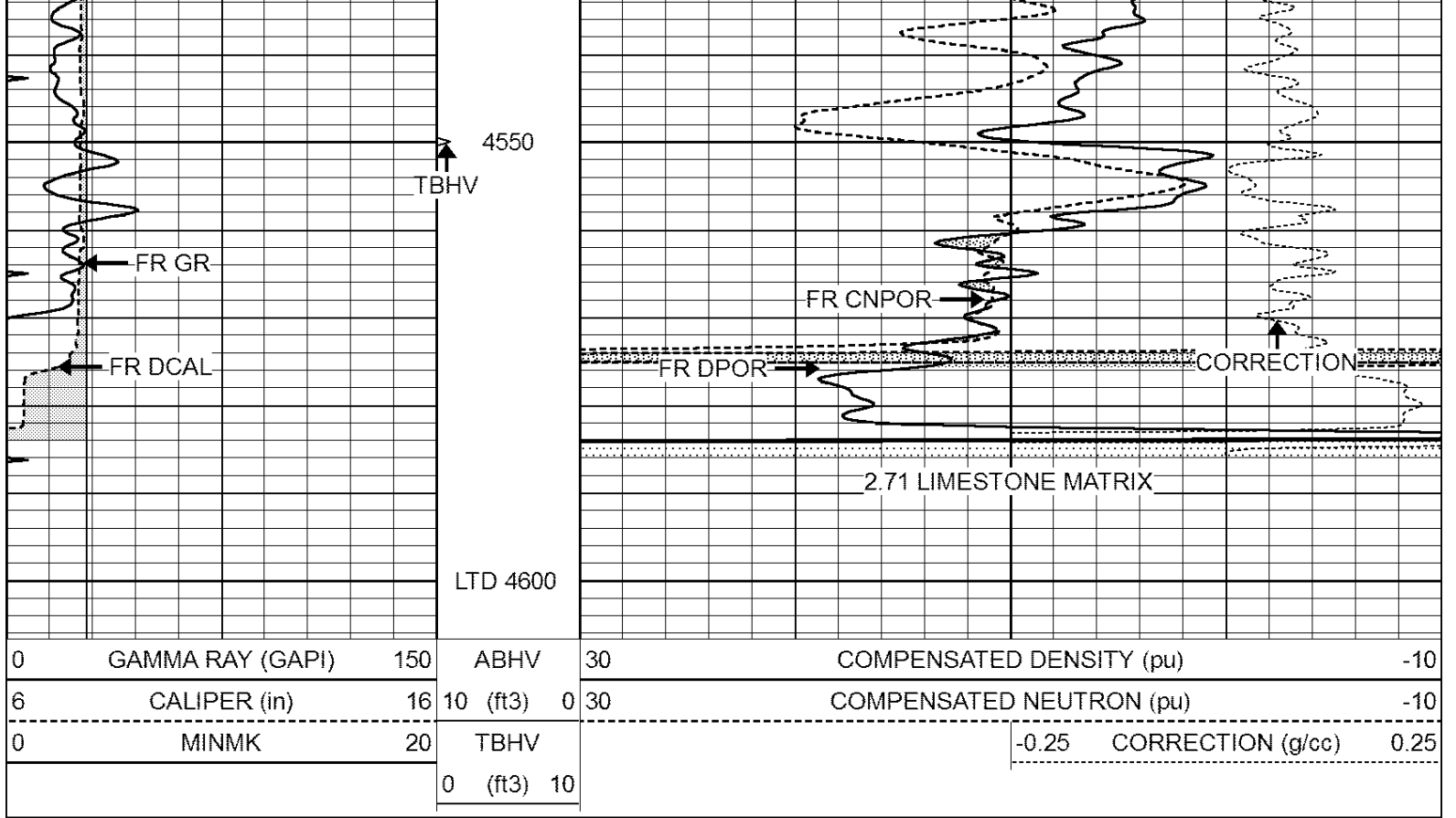
0	GAMMA RAY (GAPI)	150	ABHV	30	COMPENSATED DENSITY (pu)	-10
6	CALIPER (in)	16	10 (ft3)	0 30	COMPENSATED NEUTRON (pu)	-10
0	MINMK	20	TBHV		-0.25 CORRECTION (g/cc)	0.25
			0 (ft3)	10		







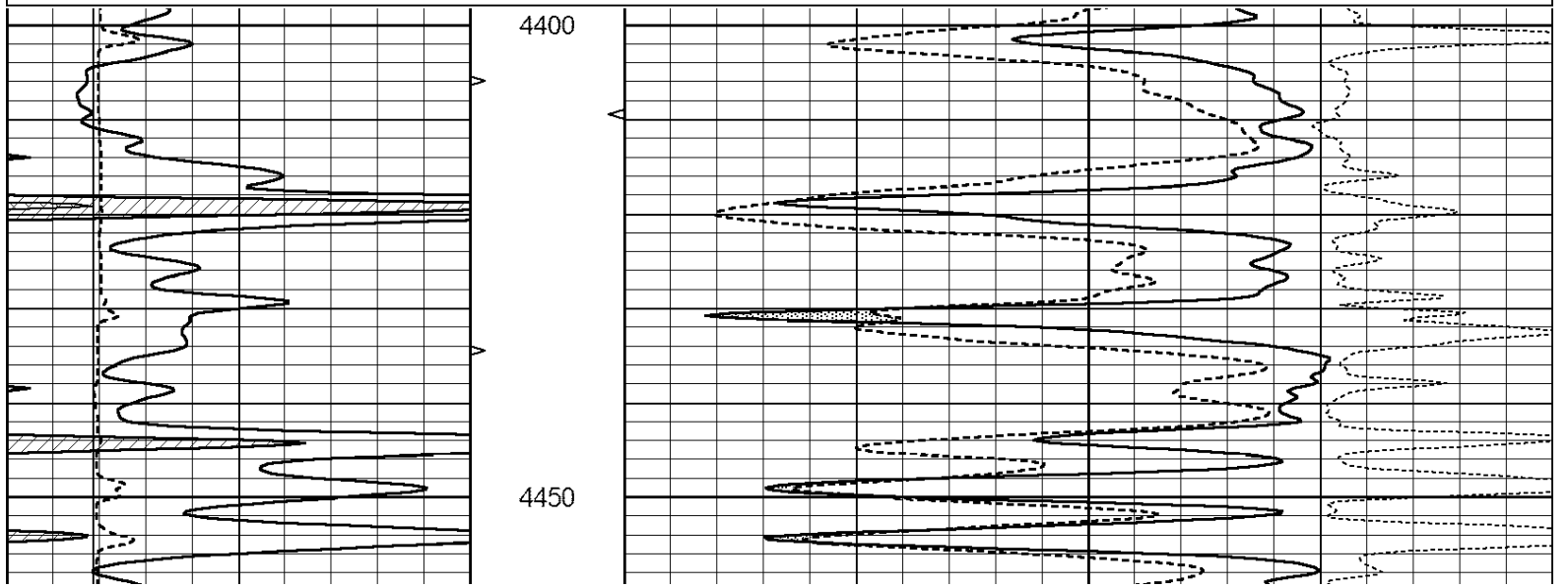


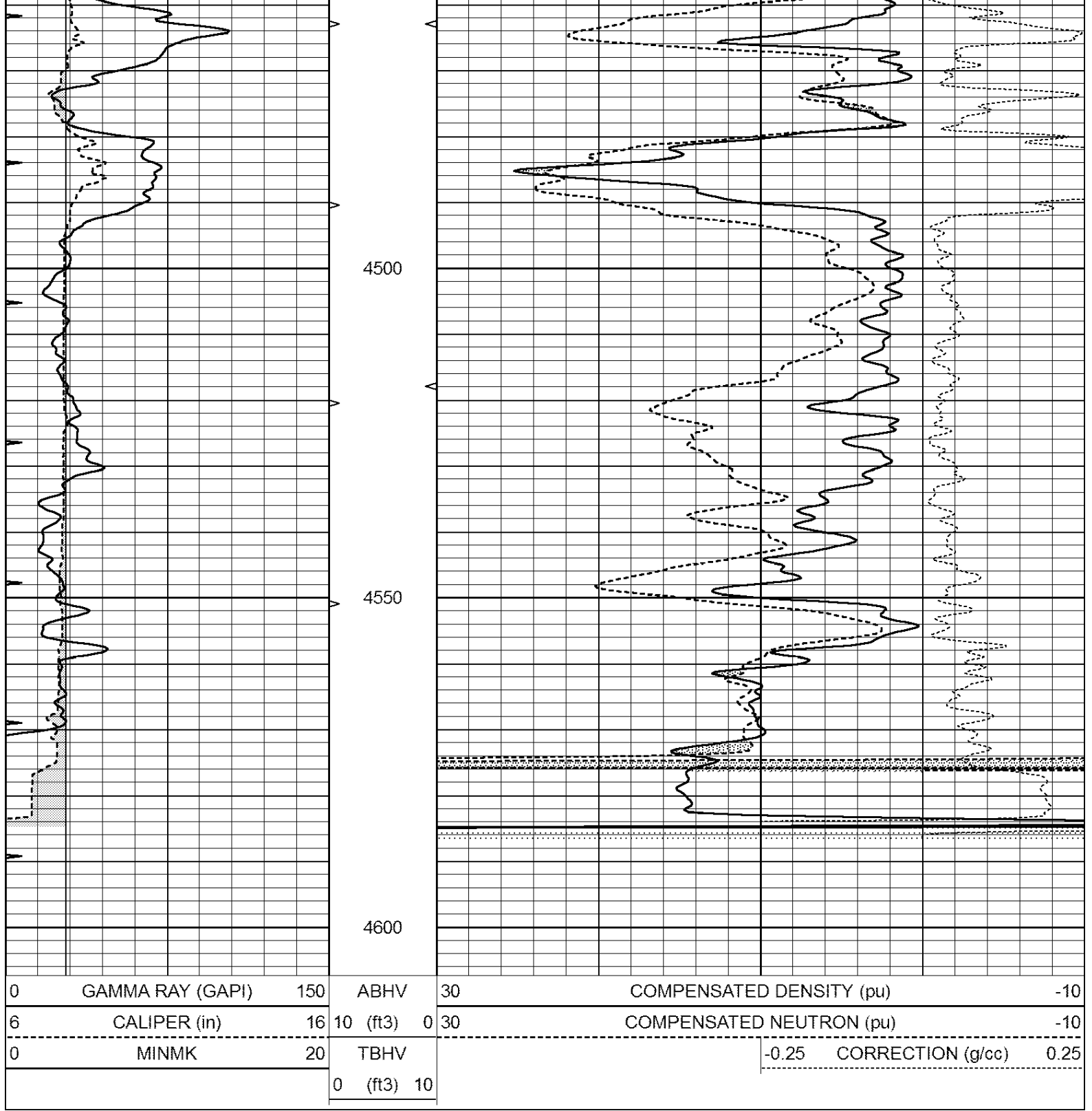


REPEAT SECTION

Database File: 26210ddn.db
 Dataset Pathname: pass2.1
 Presentation Format: den_neu
 Dataset Creation: Fri Oct 17 20:04:15 2014 by Calc Open-Cased 090629
 Charted by: Depth in Feet scaled 1:240

0	GAMMA RAY (GAPI)	150	ABHV	30	COMPENSATED DENSITY (pu)	-10
6	CALIPER (in)	16	10 (ft3)	0 30	COMPENSATED NEUTRON (pu)	-10
0	MINMK	20	TBHV		-0.25	CORRECTION (g/cc) 0.25
			0 (ft3)	10		





Calibration Report

Database File: 26210ddn.db
 Dataset Pathname: pass2.1
 Dataset Creation: Fri Oct 17 20:04:15 2014 by Calc Open-Cased 090629

Dual Induction Calibration Report

Serial-Model:	PROBE8-DILG
Surface Cal Performed:	Sun Aug 17 08:09:53 2014
Downhole Cal Performed:	Mon Jul 28 11:08:27 2008
After Survey Verification Performed:	Mon Jul 28 11:08:27 2008

Surface Calibration

Readings

References

Results

Loop:	Air	Loop		Air	Loop		m	b
Deep	0.015	0.648	V	0.000	400.000	mmho/m	620.000	-2.000
Medium	0.029	0.796	V	0.000	464.000	mmho/m	590.000	-16.000
Internal:	Zero	Cal		Zero	Cal		m	b
Deep	0.017	0.657	V	0.000	400.000	mmho/m	625.153	-10.619
Medium	0.016	0.757	V	0.000	464.000	mmho/m	625.992	-9.739

Downhole Calibration								
	Readings			References			Results	
	Zero	Cal		Zero	Cal		m'	b'
Deep	0.000	0.000	mmho/m	2.011	405.777	mmho/m	1.000	0.000
Medium	0.000	0.000	mmho/m	7.590	503.393	mmho/m	1.000	0.000
LL3		7.500	V		1500.000	Ohm-m		
		0.000	V		20.000	Ohm-m		
		-7.200	V		3800.000	mmho-m		

After Survey Verification								
	Readings			Targets			Results	
	Zero	Cal		Zero	Cal		m'	b'
Deep	0.000	0.000	mmho/m	0.000	0.000	mmho/m	0.000	0.000
Medium	0.000	0.000	mmho/m	0.000	0.000	mmho/m	0.000	0.000
LL3		1.000	Ohm-m		1.000	Ohm-m		
		0.000	Ohm-m		0.000	Ohm-m		
		1.000	mmho-m		1.000	mmho-m		

Compensated Density Calibration Report

Serial-Model:	GEAR3-GEARHART
Source / Verifier:	143 / 143
Master Calibration Performed:	Sun Aug 17 08:09:42 2014
Before Survey Verification Performed:	
After Survey Verification Performed:	

Master Calibration						
	Density		Far Detector	Near Detector		
Magnesium	1.710	g/cc	935.36	501.55	cps	
Aluminum	2.580	g/cc	209.32	357.01	cps	
	Spine Angle = 77.21		Density/Spine Ratio = 0.567			
	Size		Reading			
Small Ring	8.00	in	4.29	V		
Large Ring	14.00	in	6.24	V		

Before Survey Verification						
	Target		Measured			
		g/cc			g/cc	
		g/cc			g/cc	
		g/cc			g/cc	

After Survey Verification						
	Target		Measured			
		g/cc			g/cc	
		g/cc			g/cc	
		g/cc			g/cc	

Compensated Neutron Calibration Report

Serial Number: 61
 Tool Model: G

CALIBRATION

Detector	Readings	Target	Normalization
Short Space	1.00 cps	1.00 cps	1.0000
Long Space	1.00 cps	1.00 cps	1.0000

PRE-SURVEY VERIFICATION

	Detector	Readings	Measured	Target
1)	Short Space	cps		
	Long Space	cps	pu	pu
2)	Short Space	cps		
	Long Space	cps	pu	
3)	Short Space	cps		
	Long Space	cps	pu	

POST-SURVEY VERIFICATION

	Detector	Readings	Measured	Target
1)	Short Space	cps		
	Long Space	cps	pu	pu
2)	Short Space	cps		
	Long Space	cps	pu	pu
3)	Short Space	cps		
	Long Space	cps	pu	pu

Gamma Ray Calibration Report

Serial Number: GR6
 Tool Model: OPEN
 Performed: Sun Aug 17 15:23:09 2014

Calibrator Value: 150.0 GAPI

Background Reading: 0.0 cps
 Calibrator Reading: 276.0 cps

Sensitivity: 0.7000 GAPI/cps