



Pioneer Energy Services

# Dual Induction Log

15-015-24,034-00-00

API No.

Company **Braden Petroleum**  
 Well **Bush 'B' #26**  
 Field **Fox Bush Couch**  
 County **Butler** State **Kansas**

Location **1980' FNL & 550' FWL**

Sec: **19** Twp: **29S** Rge: **6E**

Other Services  
 CNL/CDL  
 MEL

Permanent Datum **Ground Level** Elevation **1341**  
 Log Measured From **Kelly Bushing** 9 Ft. Above Perm. Datum  
 Drilling Measured From **Kelly Bushing**

Elevation  
 K.B. 1350  
 D.F. 1341  
 G.L. 1341

Date	8/8/2014	
Run Number	One	
Depth Driller	3034	
Depth Logger	3031	
Bottom Logged Interval	3030	
Top Log Interval	200	
Casing Driller	8.625 @ 219	
Casing Logger	216	
Bit Size	7.875	
Type Fluid in Hole	Chemical	
Salinity,ppm CL	1100	
Density / Viscosity	9.5 42	
pH / Fluid Loss	12 12.8	
Source of Sample	Flowline	
Rm @ Meas. Temp	1.50 @ 80	
Rmf @ Meas. Temp	1.13 @ 80	
Rmc @ Meas. Temp	2.03 @ 80	
Source of Rmf / Rmc	Charts	
Rm @ BHT	1.13 @ 106	
Operating Rig Time	4 Hours	
Max Rec. Temp. F	106	
Equipment Number	10	
Location	Hays	
Recorded By	D.Kerr	
Witnessed By	Jim Braden	

<<< Fold Here >>>

All interpretations are opinions based on inferences from electrical or other measurements and we cannot and do not guarantee the accuracy or correctness of any interpretation, and we shall not, except in the case of gross or willful negligence on our part, be liable or responsible for any loss, costs, damages, or expenses incurred or sustained by anyone resulting from any interpretation made by any of our officers, agents or employees. These interpretations are also subject to our general terms and conditions set out in our current Price Schedule.

### Comments

Thank you for using Pioneer Energy Services  
[www.pioneerenergy.com](http://www.pioneerenergy.com)  
 785 625 3858

Smileyberg KS, 3 East,  
 South Into through Gate, Stay Left at Y

Database File: c:\warrior\data\braden petroleum\_bush 'b' #26\braden\_bush\_b\_26hd.db  
 Dataset Pathname: DIL\bradstk  
 Presentation Format: dil2in  
 Dataset Creation: Fri Aug 08 07:07:45 2014  
 Charted by: Depth in Feet scaled 1:600

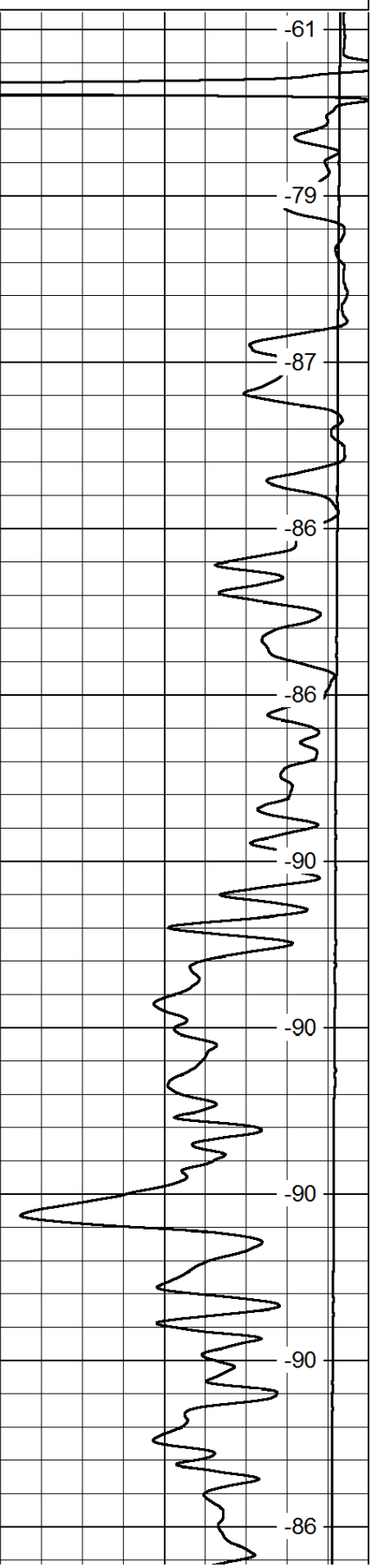
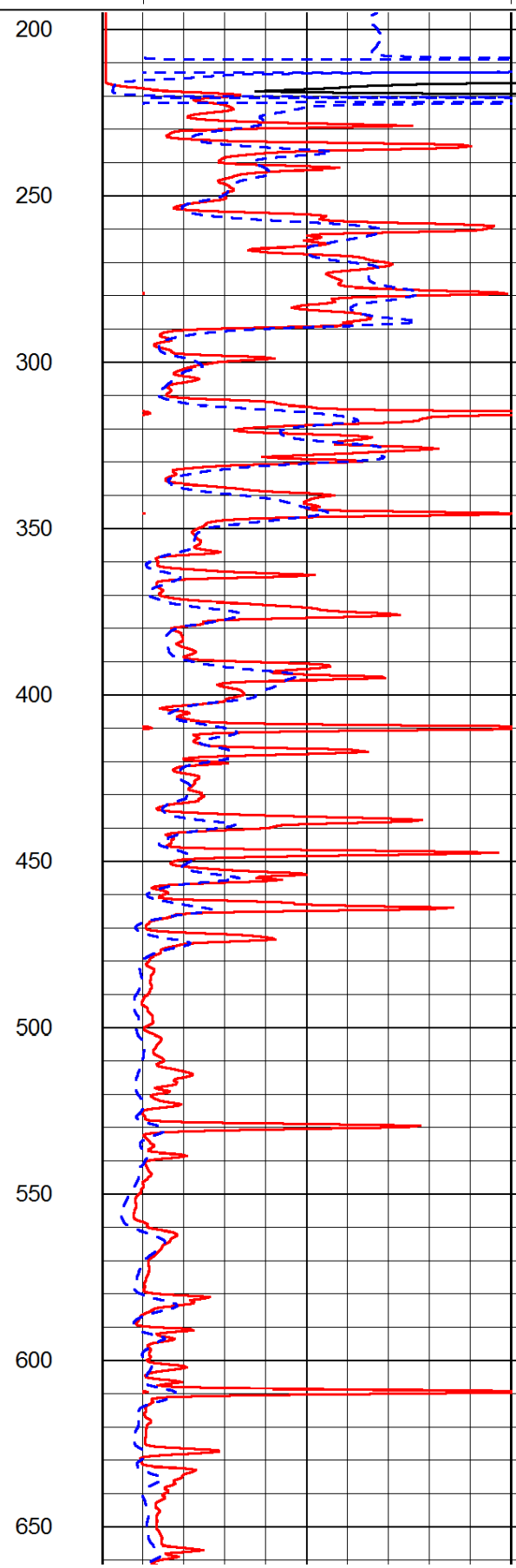
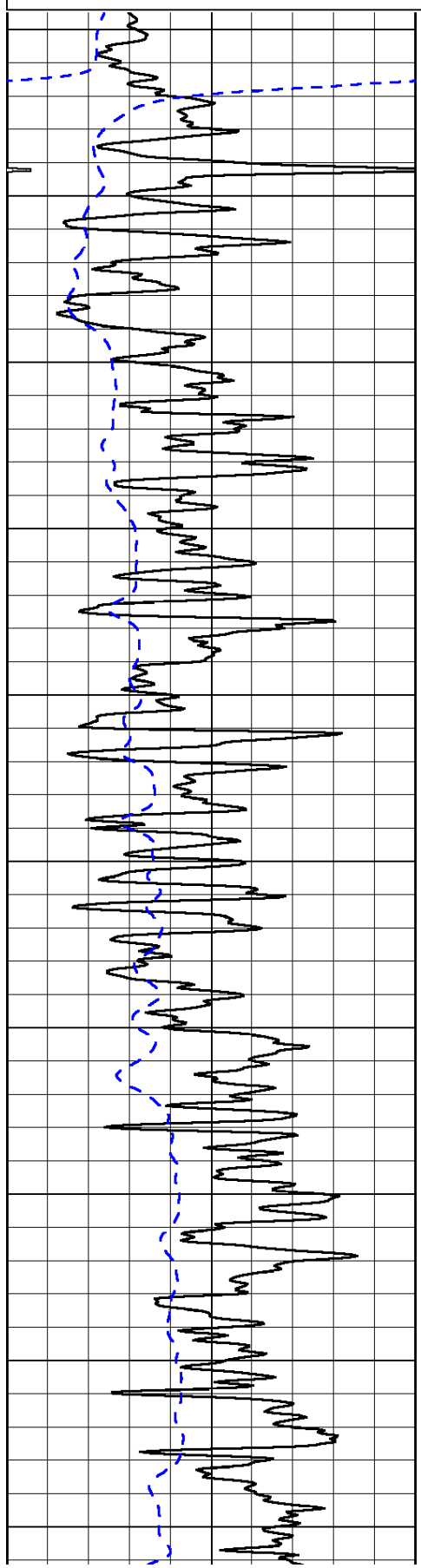
0	Gamma Ray	150
-200	SP (mV)	0

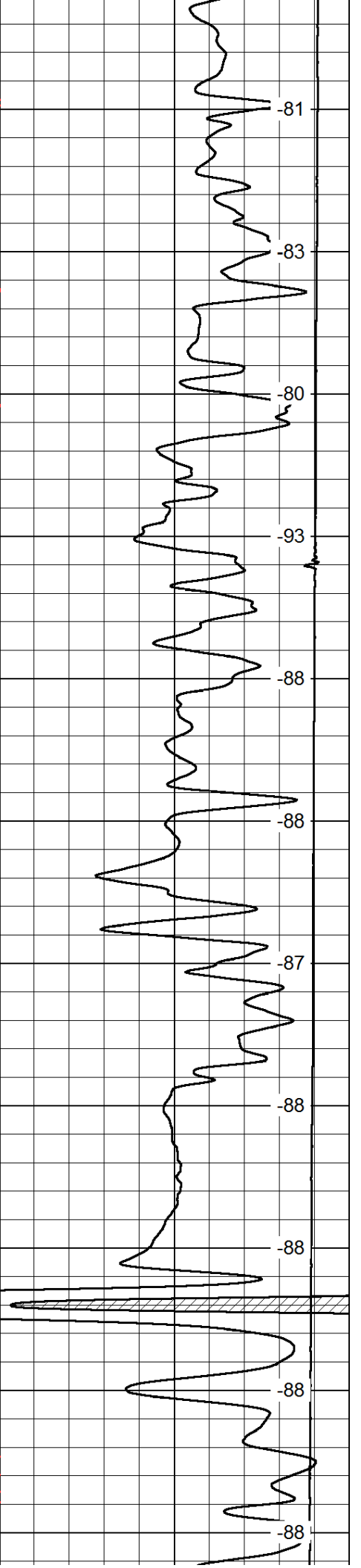
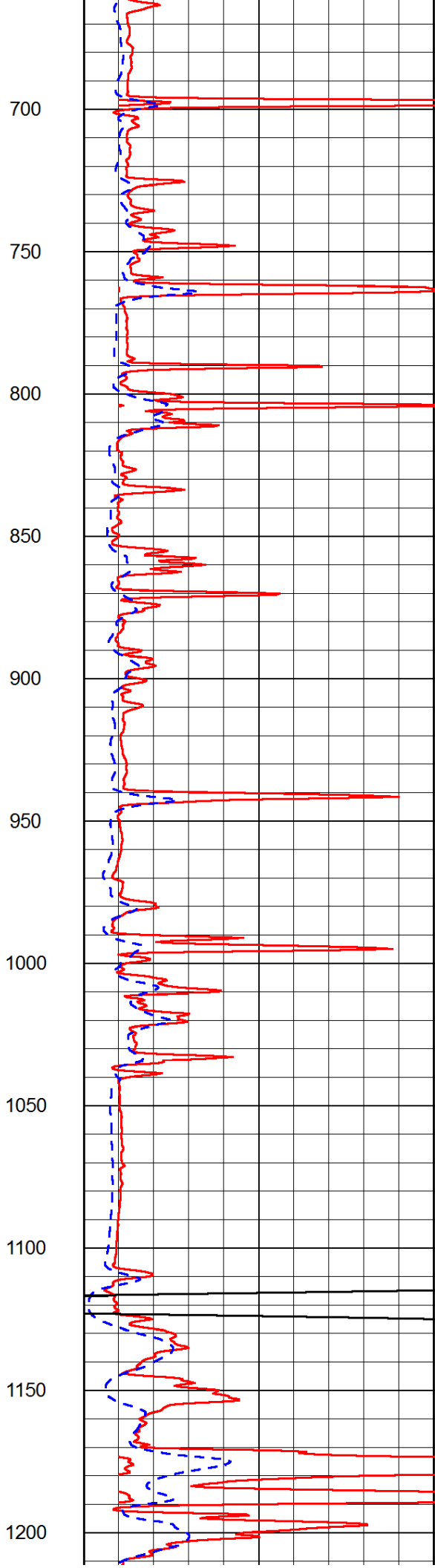
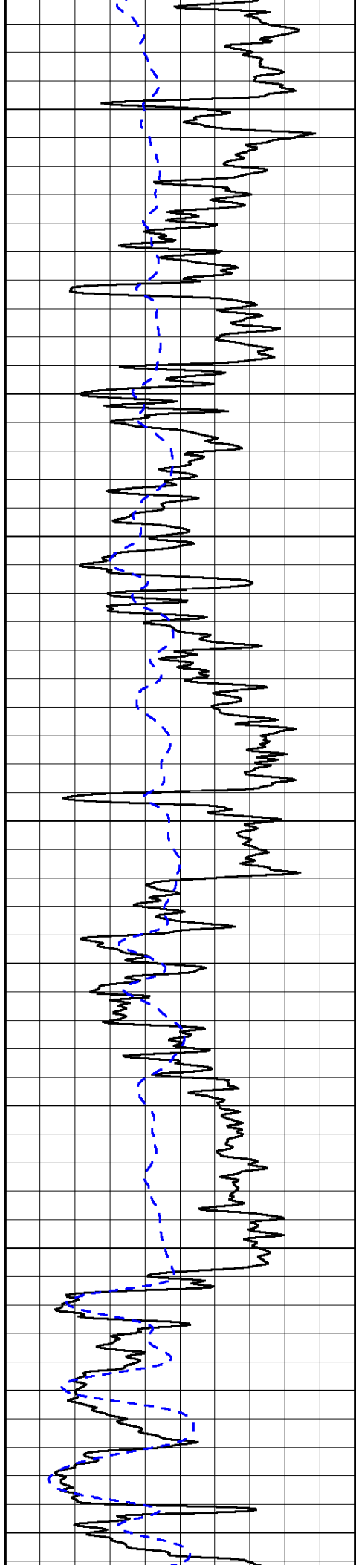
0	Shallow Resistivity	50
0	Deep Resistivity	50

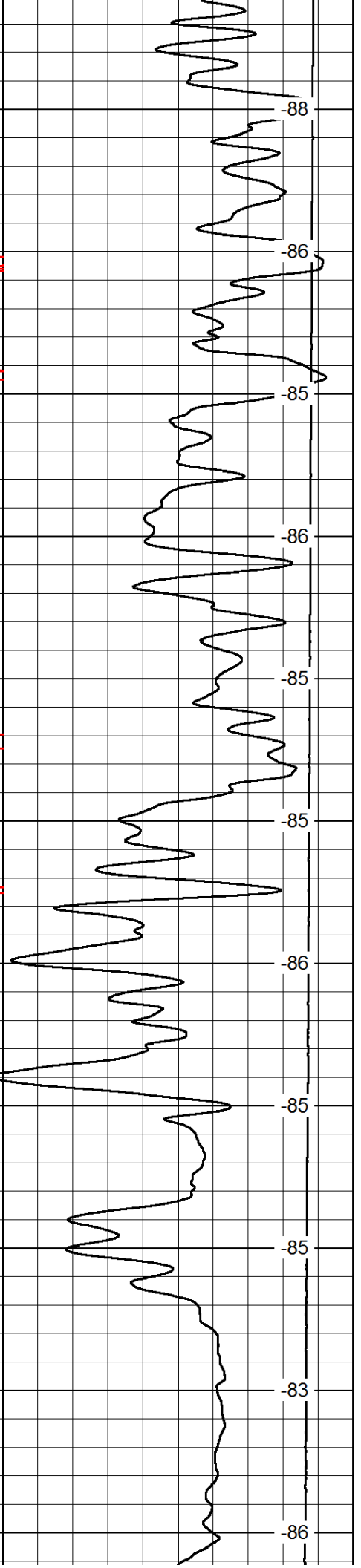
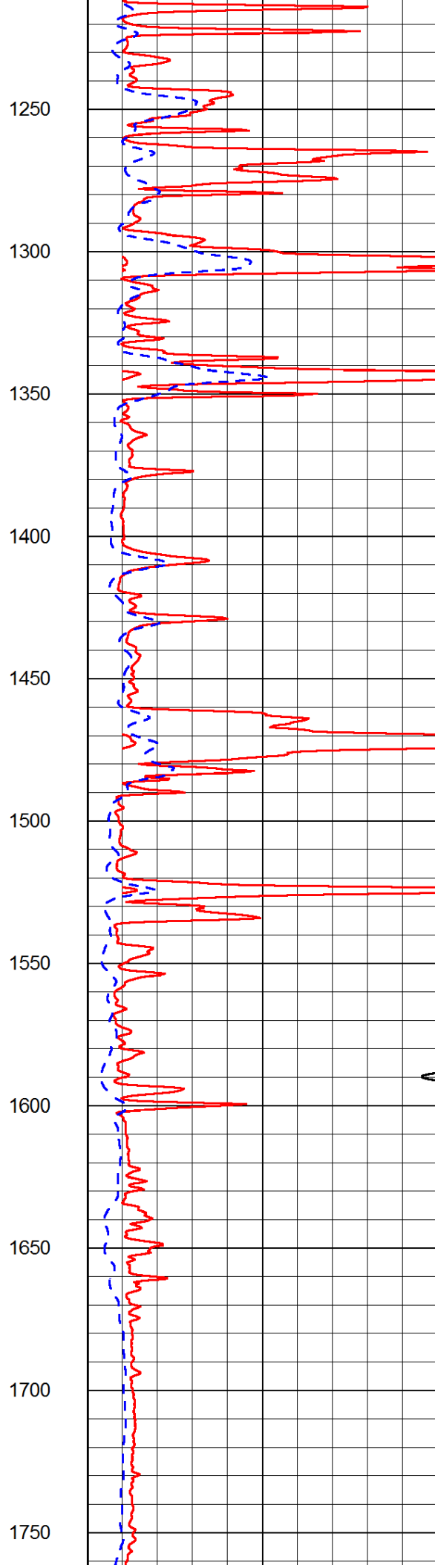
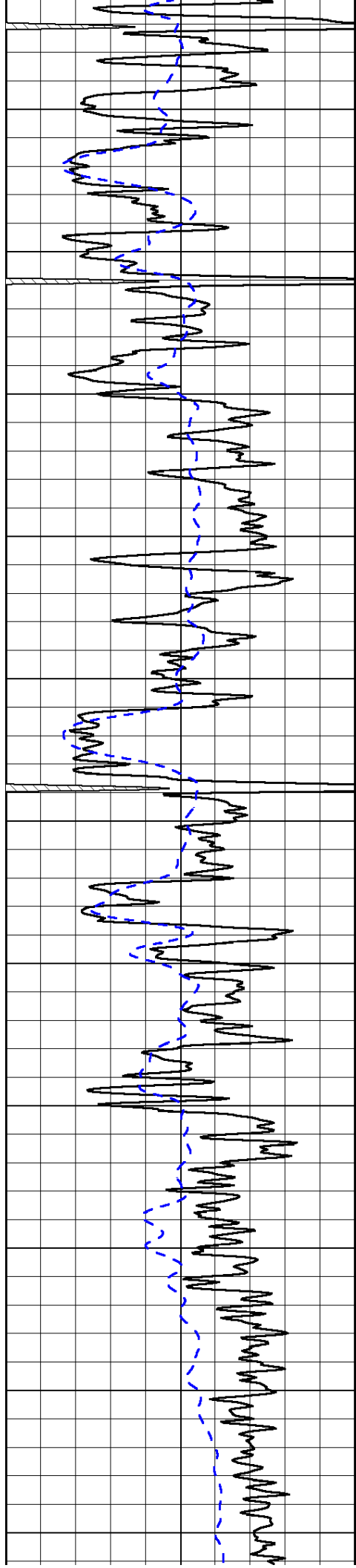
LSPD

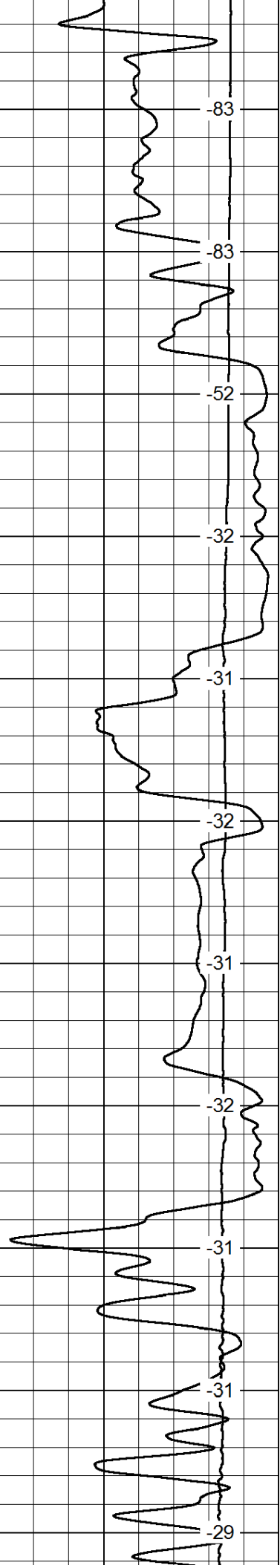
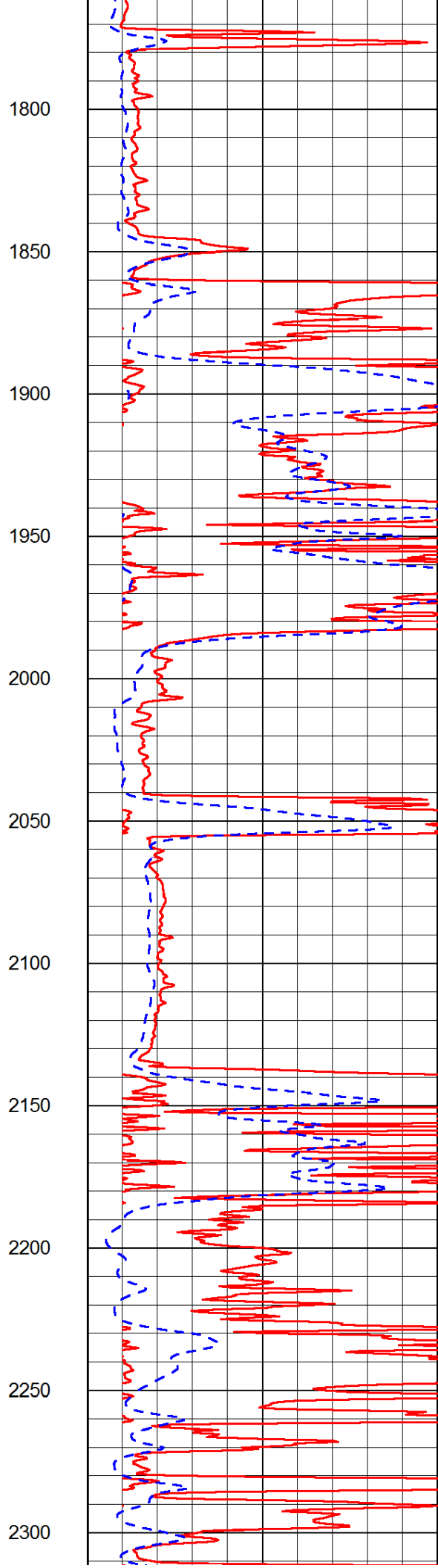
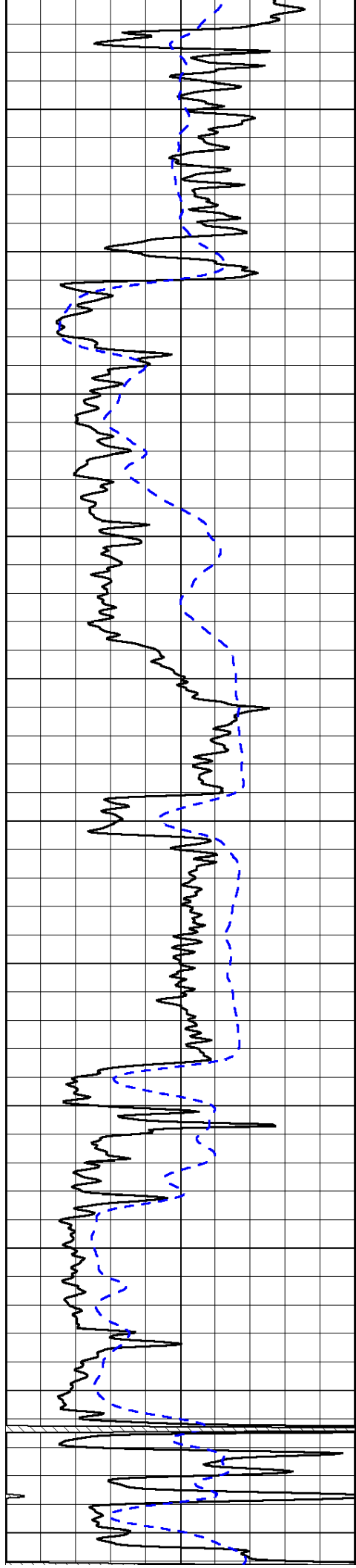
1000	Conductivity	0
15000	Line Tension	0

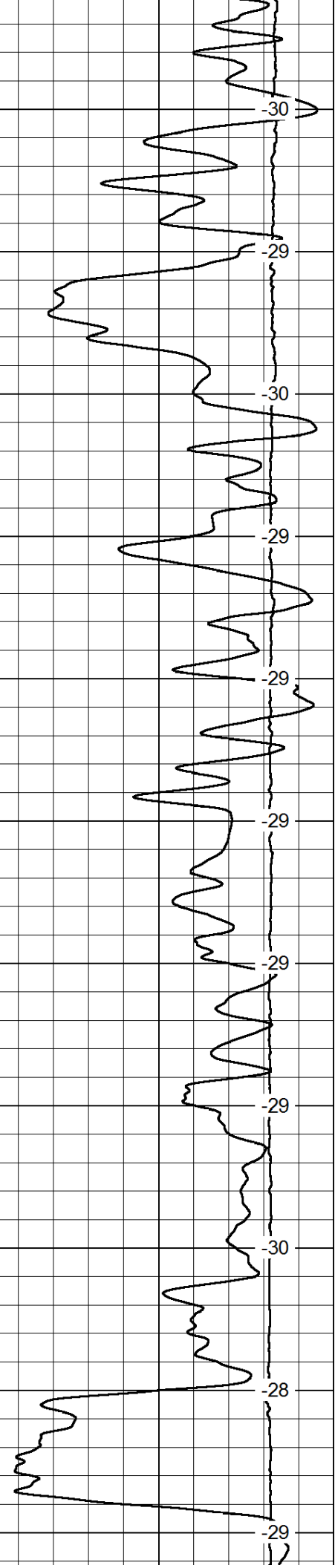
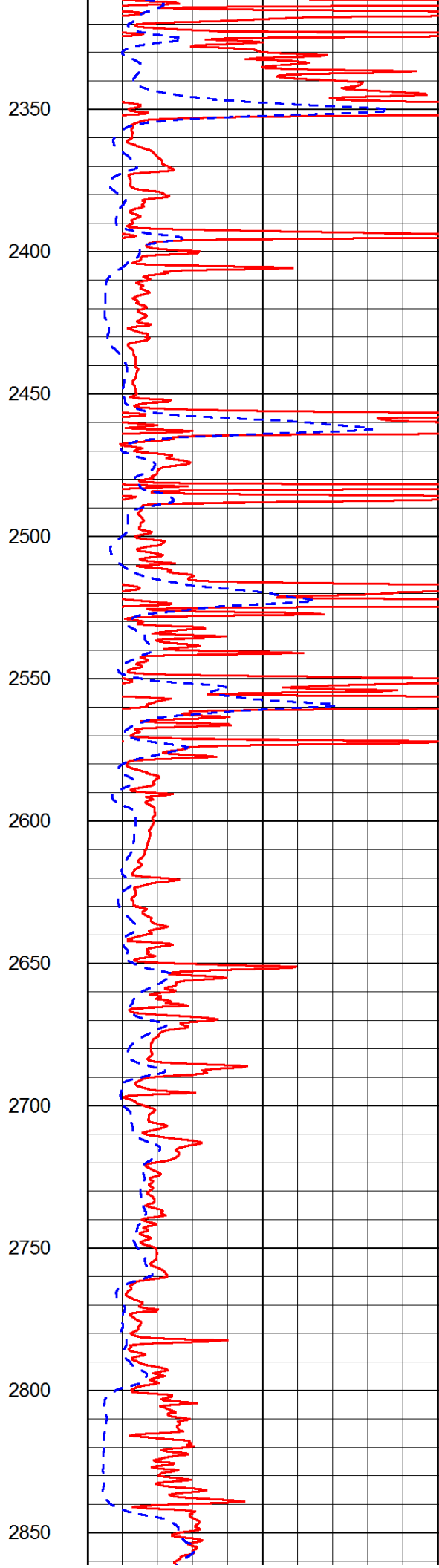
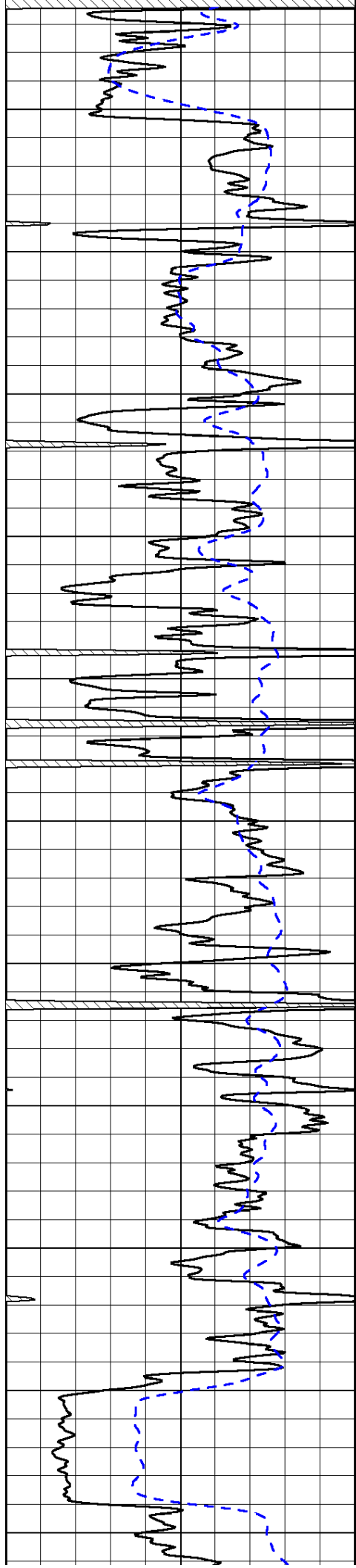
50	Shallow Resistivity	500
50	Deep Resistivity	500

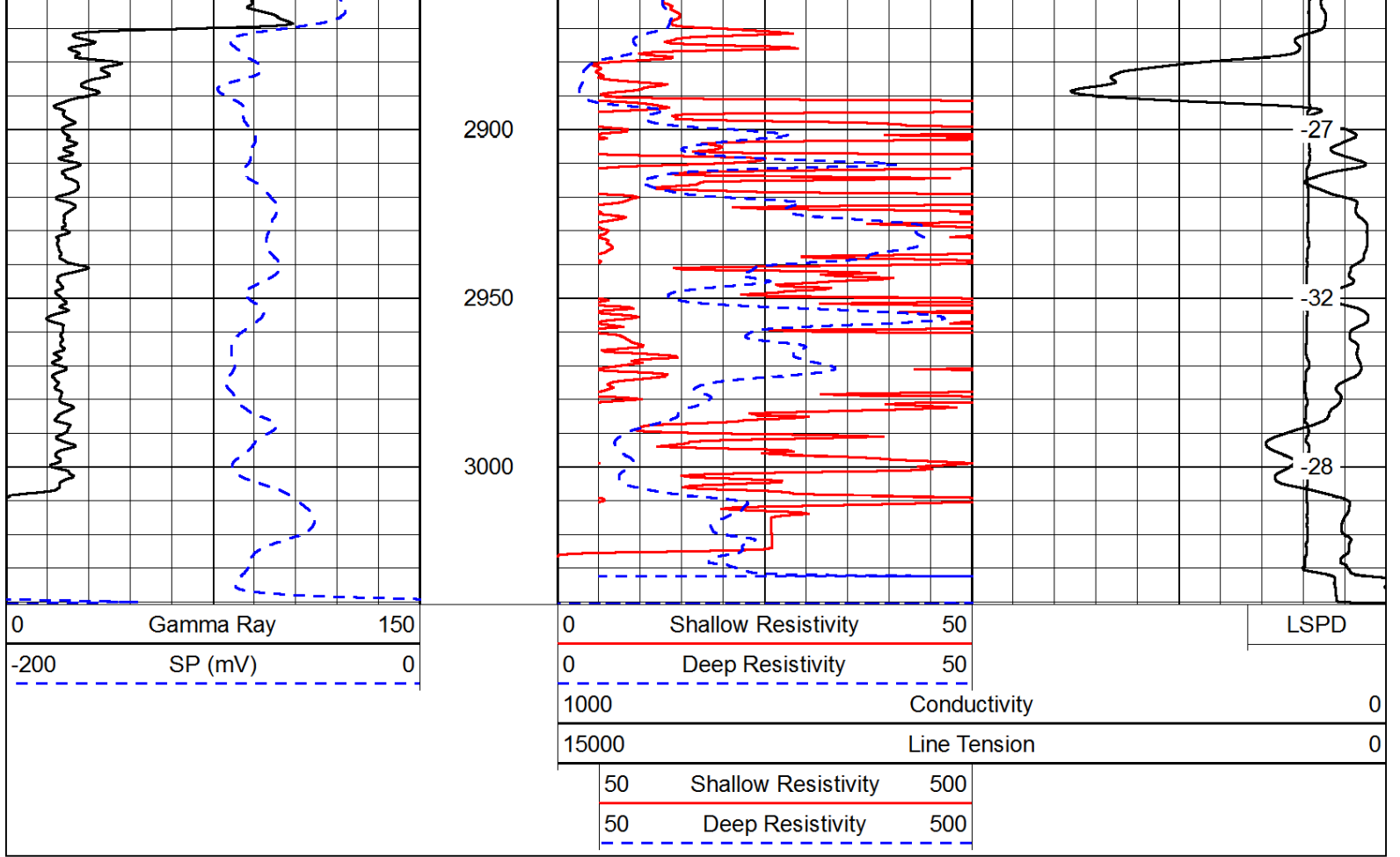




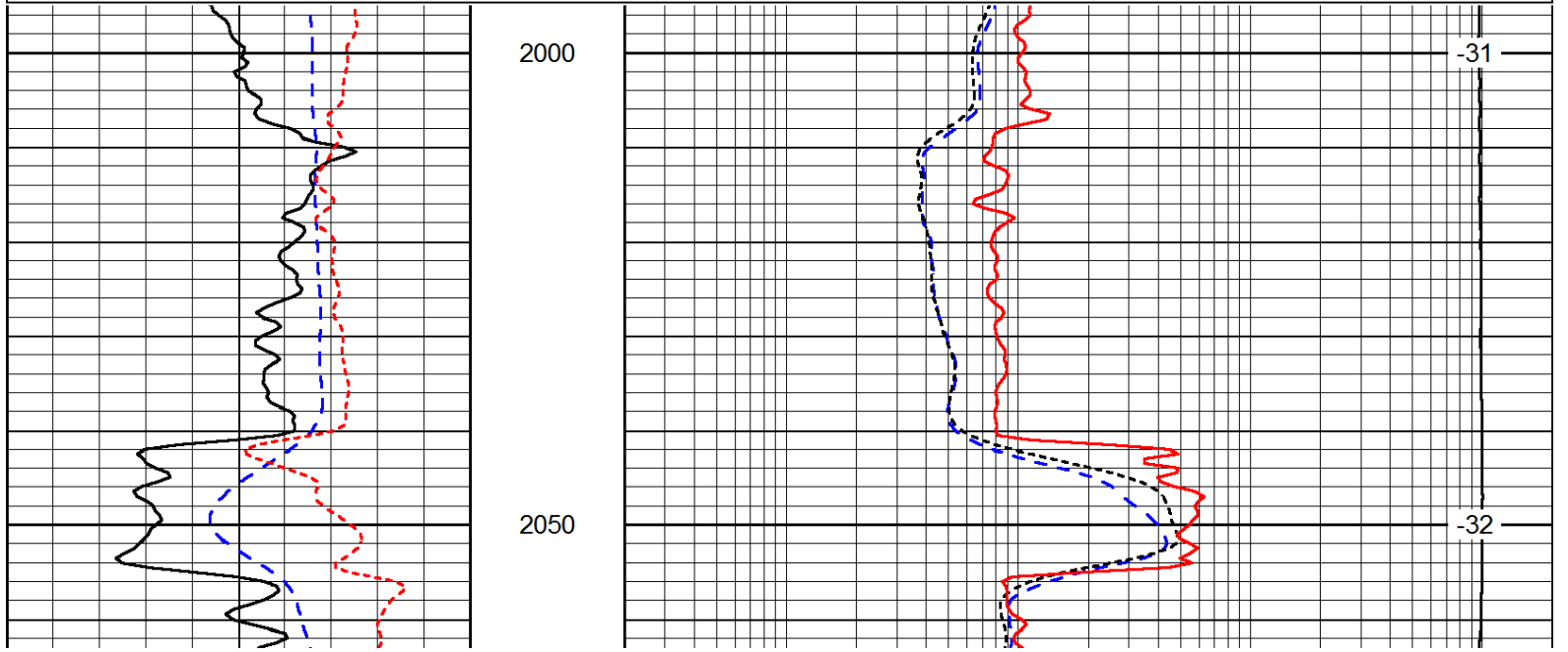
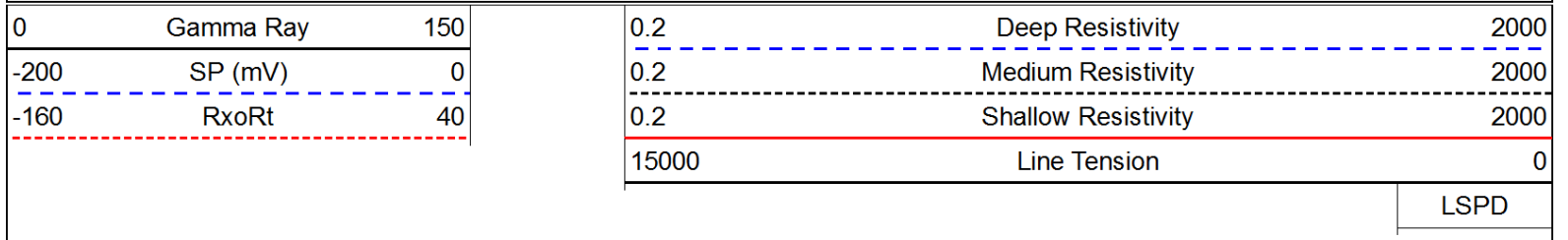


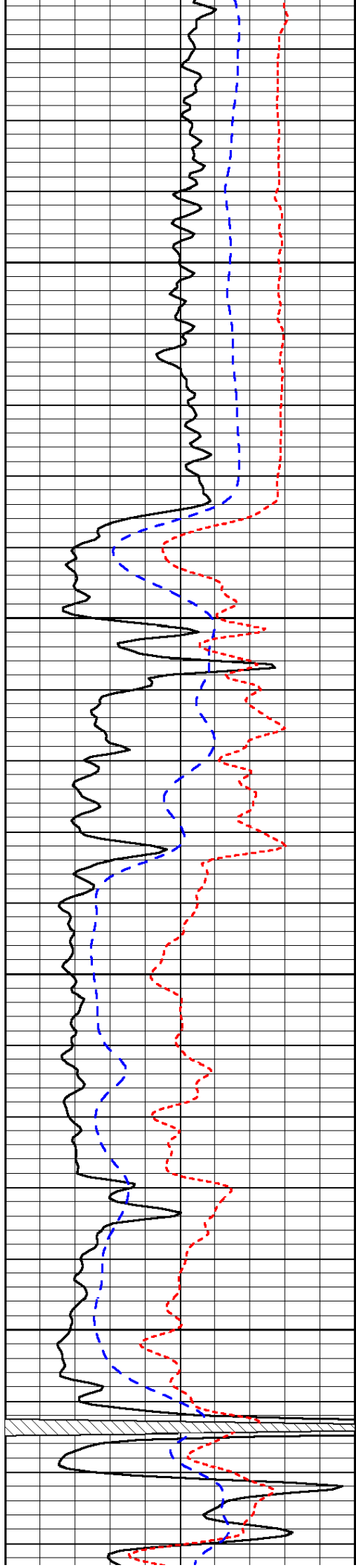






Database File: c:\warrior\data\braden petroleum\_bush 'b' #26\braden\_bush\_b\_26hd.db  
 Dataset Pathname: DIL/bradstk  
 Presentation Format: dil  
 Dataset Creation: Fri Aug 08 07:07:45 2014  
 Charted by: Depth in Feet scaled 1:240



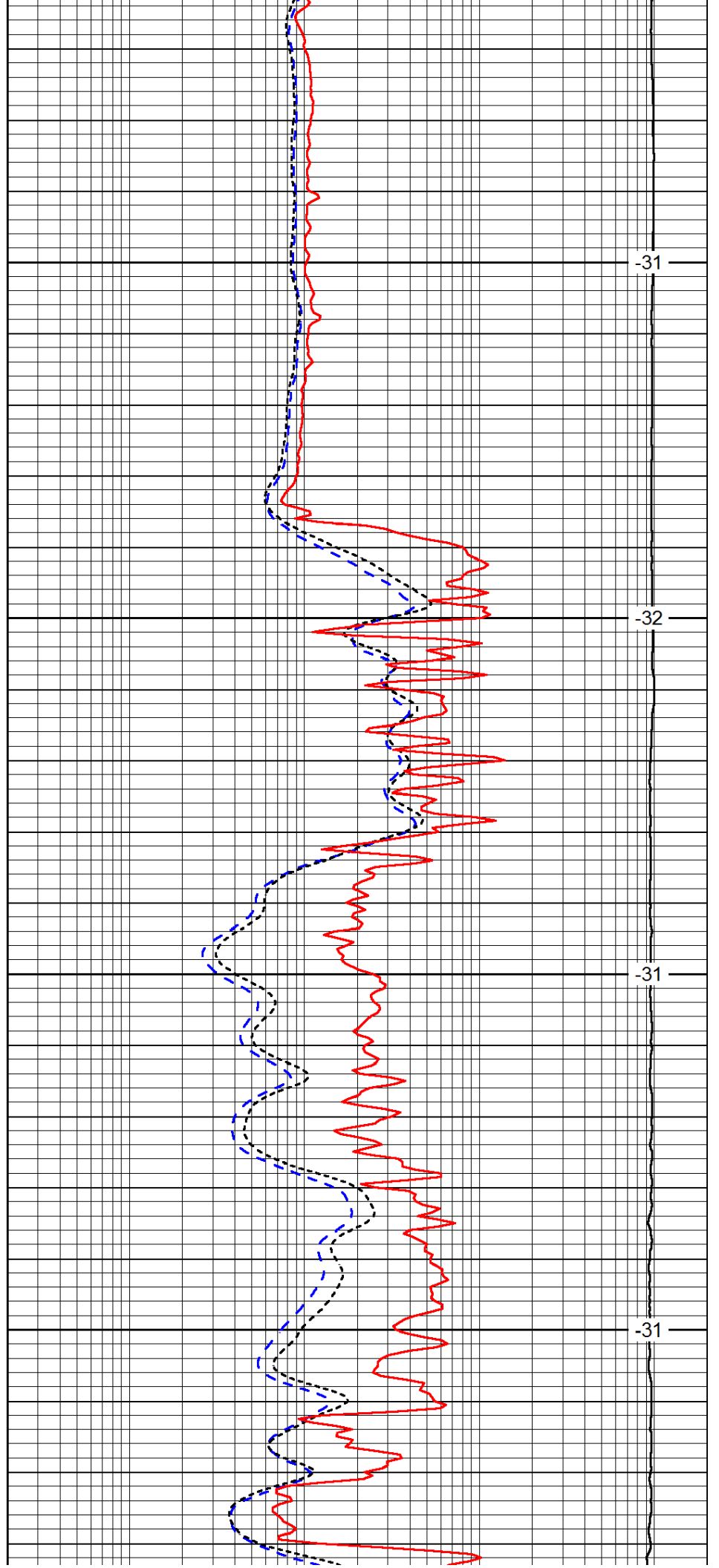


2100

2150

2200

2250

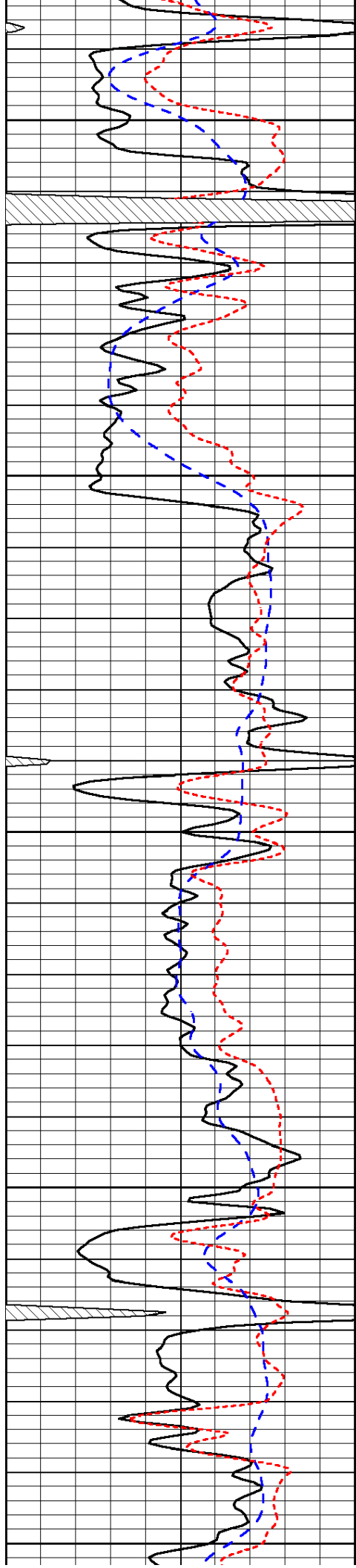


-31

-32

-31

-31



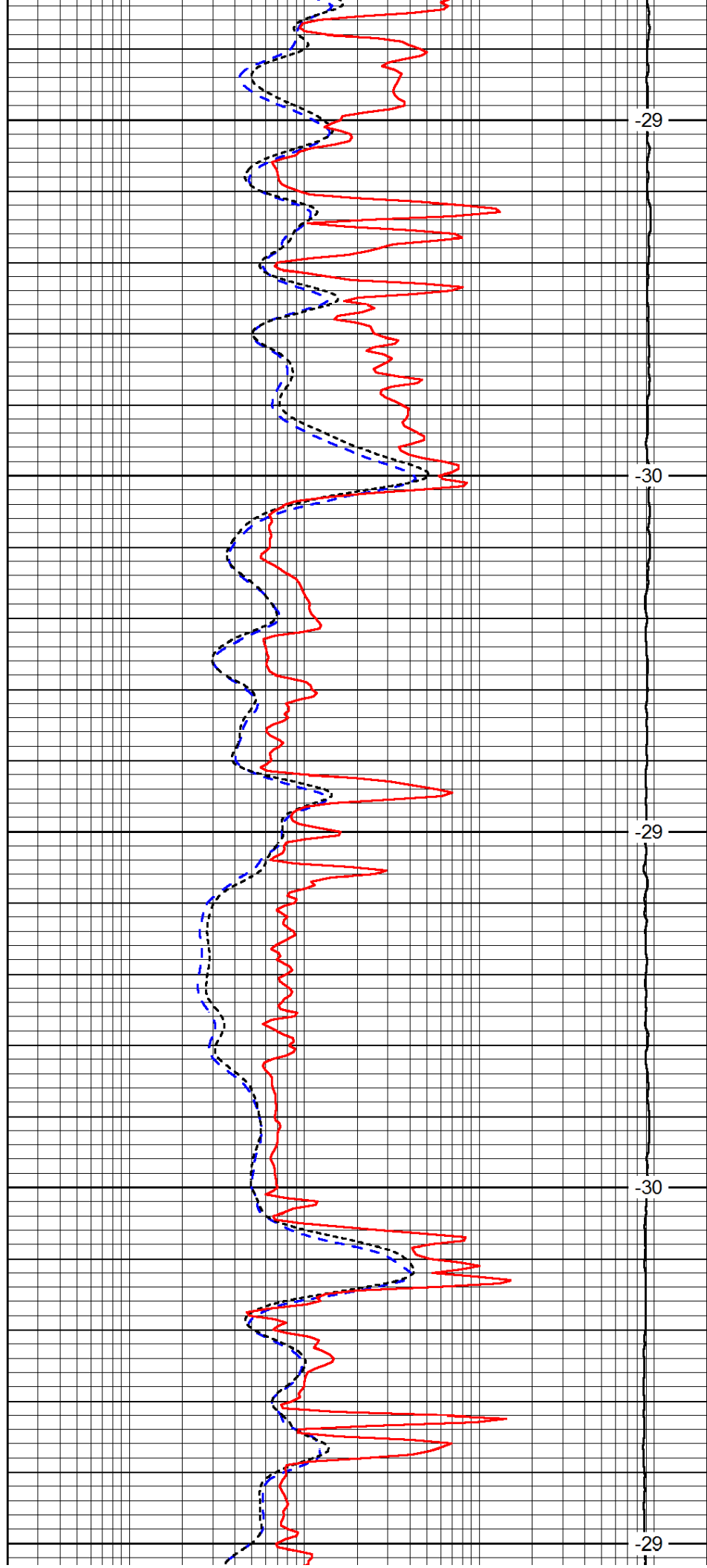
2300

2350

2400

2450

2500



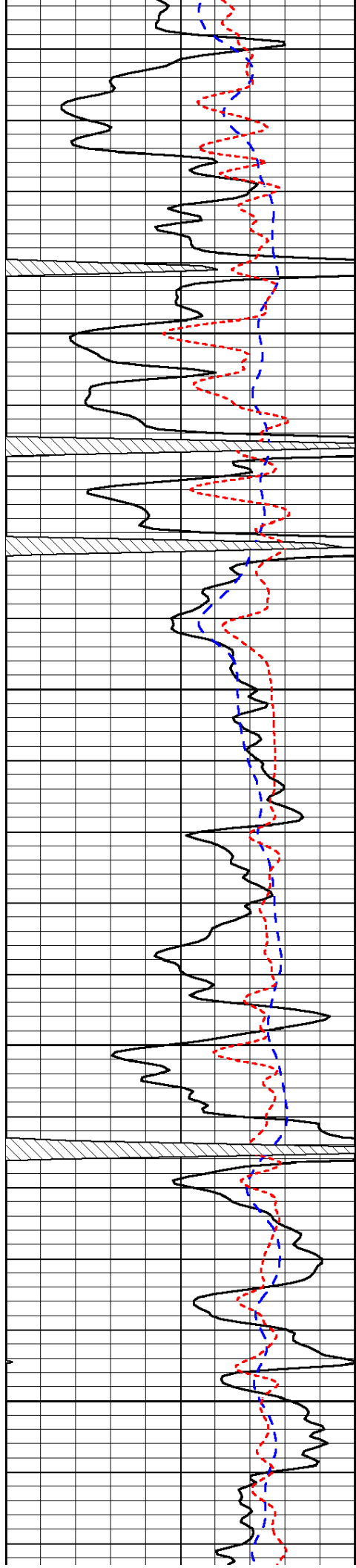
-29

-30

-29

-30

-29

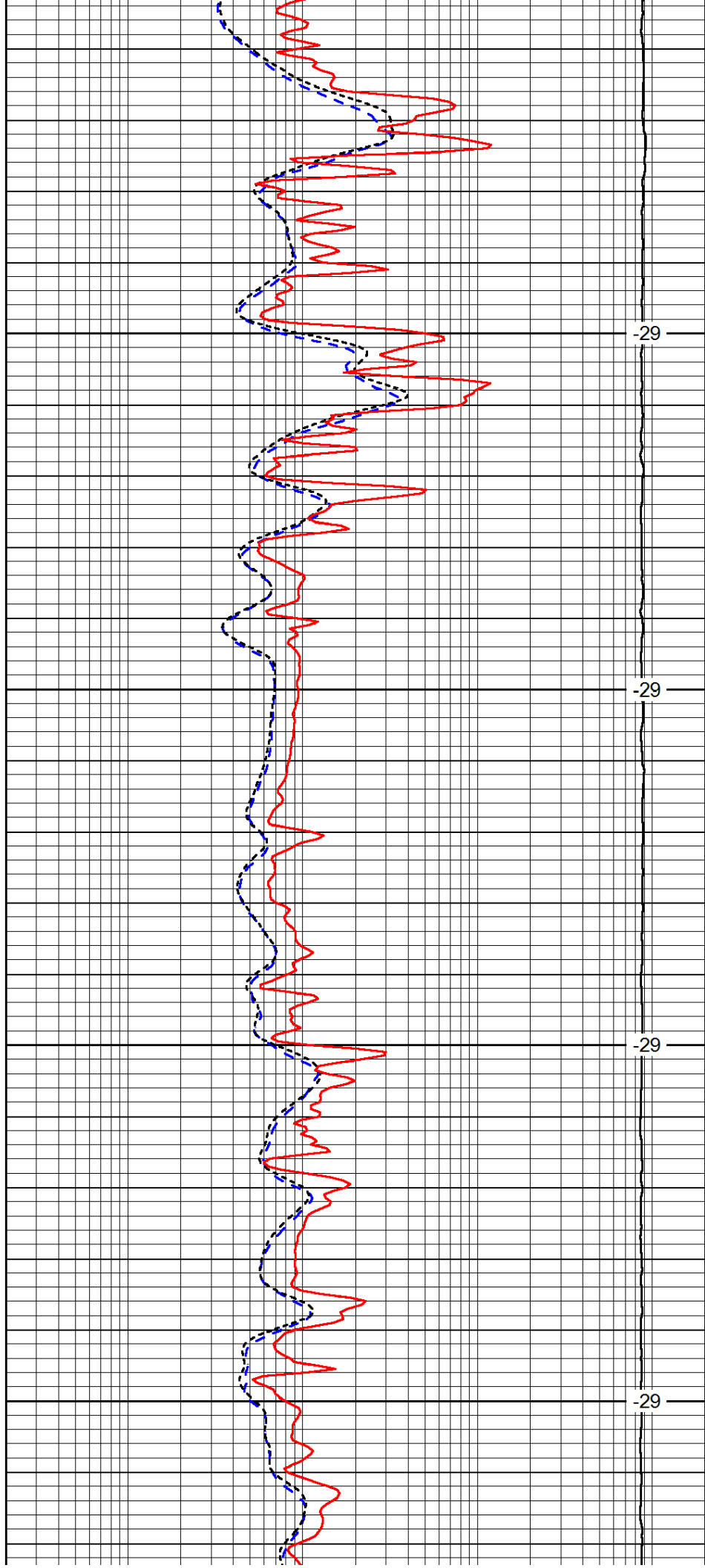


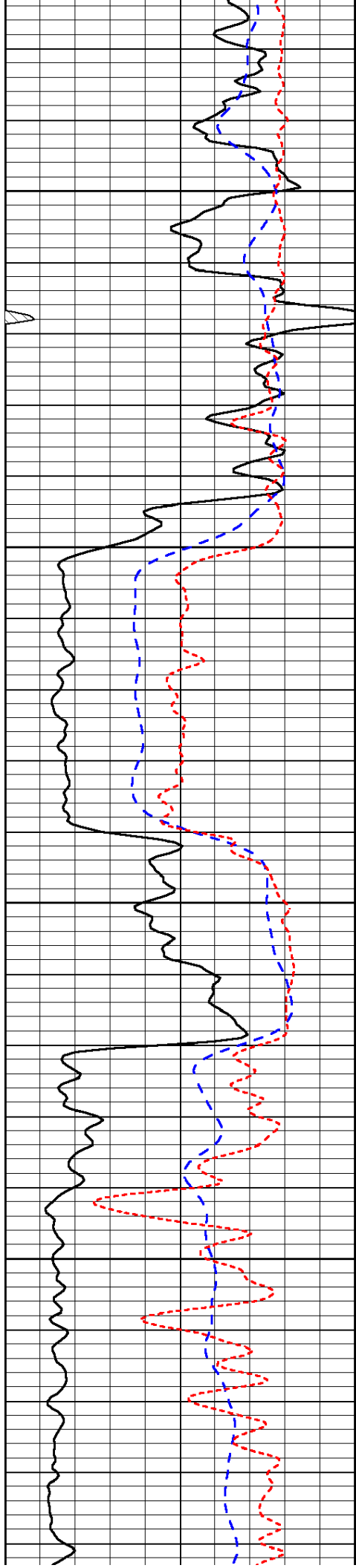
2550

2600

2650

2700



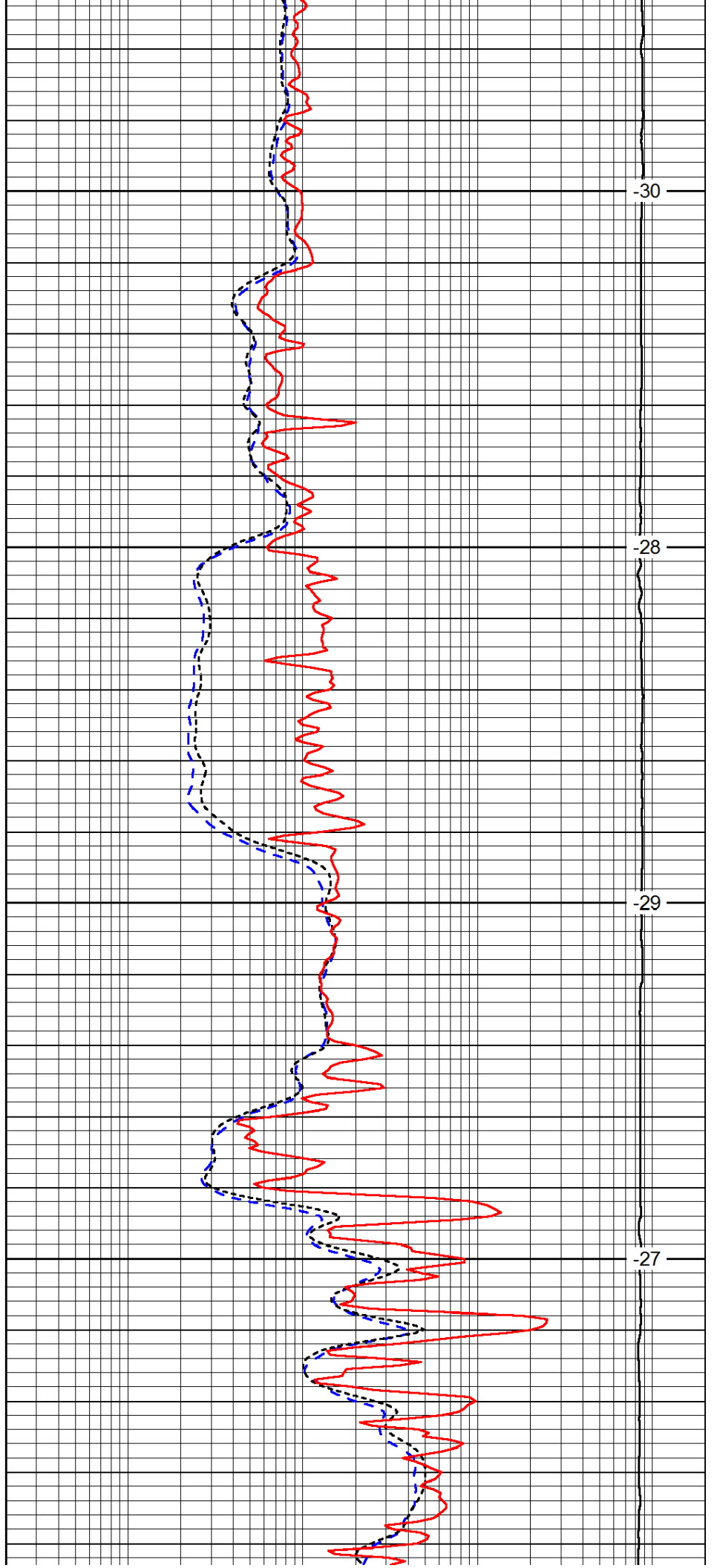


2750

2800

2850

2900

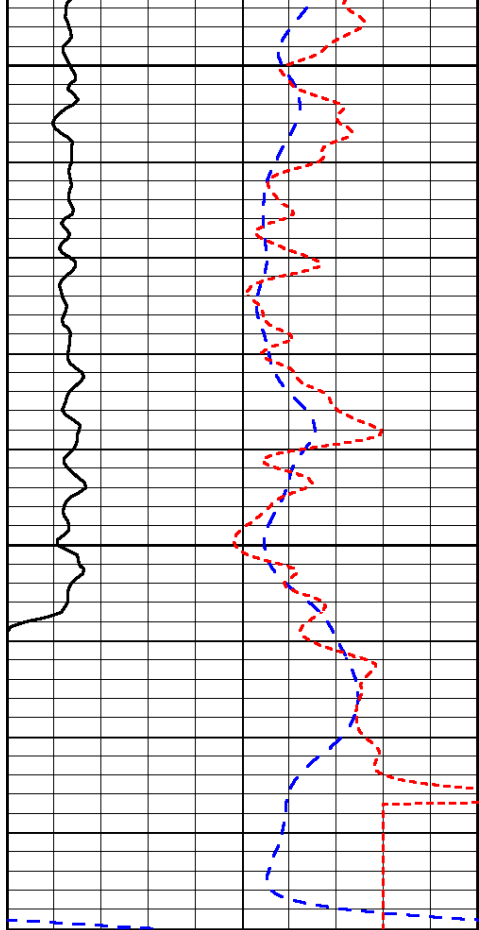


-30

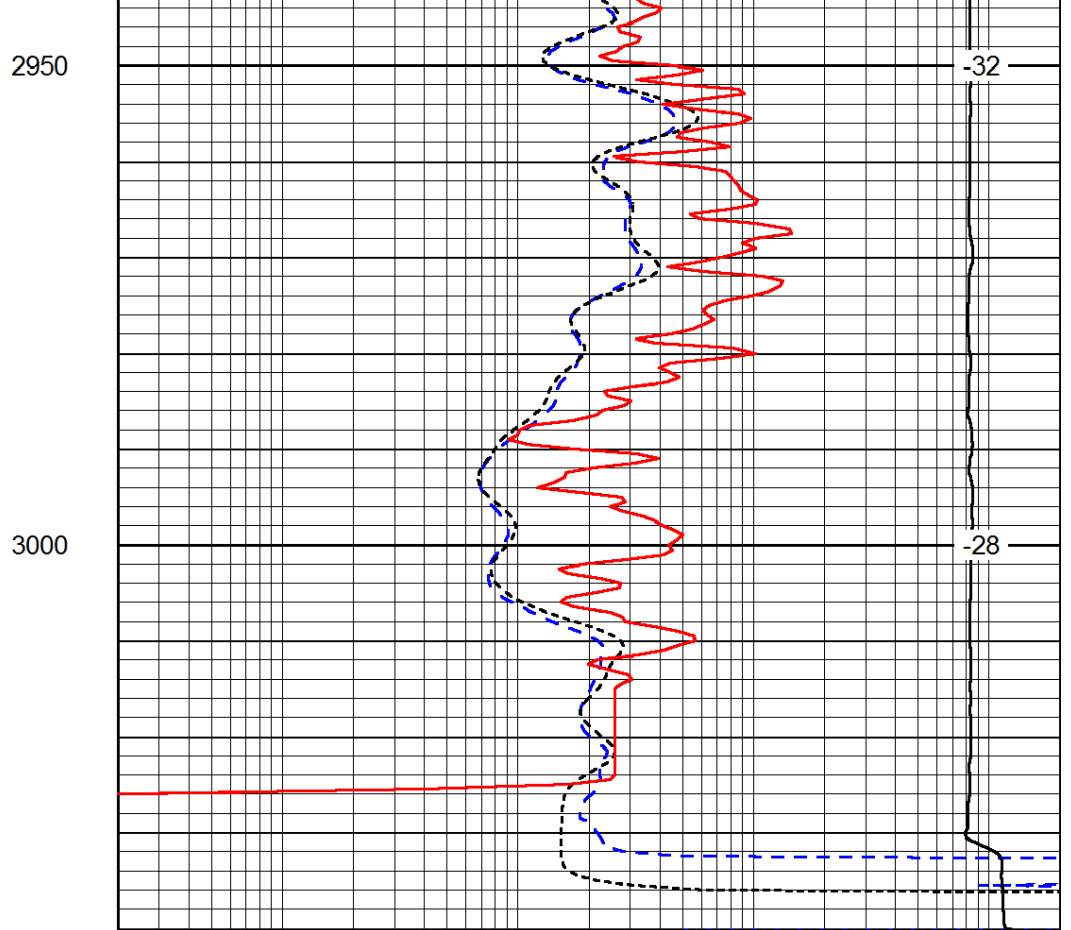
-28

-29

-27



0	Gamma Ray	150
-200	SP (mV)	0
-160	RxoRt	40



0.2	Deep Resistivity	2000
0.2	Medium Resistivity	2000
0.2	Shallow Resistivity	2000
15000	Line Tension	0

LSPD