



Pioneer Energy Services

Dual Compensated Porosity Log

15-015-24,034-00-00

API No.

Company **Braden Petroleum**
 Well **Bush 'B' #26**
 Field **Fox Bush Couch**
 County **Butler**

State **Kansas**

Location
 Sec: **19** Twp: **29S** Rge: **6E**
 1980' FNL & 550' FWL

Other Services
 DIL
 MEL

Permanent Datum Ground Level Elevation 1341
 Log Measured From Kelly Bushing 9 Ft. Above Perm. Datum
 Drilling Measured From Kelly Bushing

Elevation
 K.B. 1350
 D.F.
 G.L. 1341

Date	8/8/2014
Run Number	One
Type Log	CNL / CDL
Depth Driller	3034
Depth Logger	3031
Bottom Logged Interval	3010
Top Logged Interval	2000
Type Fluid In Hole	Chemical
Salinity, PPM CL	1100
Density	9.5
Level	Full
Max. Rec. Temp. F	106
Operating Rig Time	4 Hours
Equipment -- Location	10 Hays
Recorded By	D Kerr
Witnessed By	Jim Braden

Borehole Record		Casing Record					
Run No.	Bit	From	To	Size	Wgt.	From	To
1	12.25	00	219	8.625	24#	00	219
2	7.875	219	3034				

<<< Fold Here >>>

All interpretations are opinions based on inferences from electrical or other measurements and we cannot and do not guarantee the accuracy or correctness of any interpretation, and we shall not, except in the case of gross or willful negligence on our part, be liable or responsible for any loss, costs, damages, or expenses incurred or sustained by anyone resulting from any interpretation made by any of our officers, agents or employees. These interpretations are also subject to our general terms and conditions set out in our current Price Schedule.

Comments

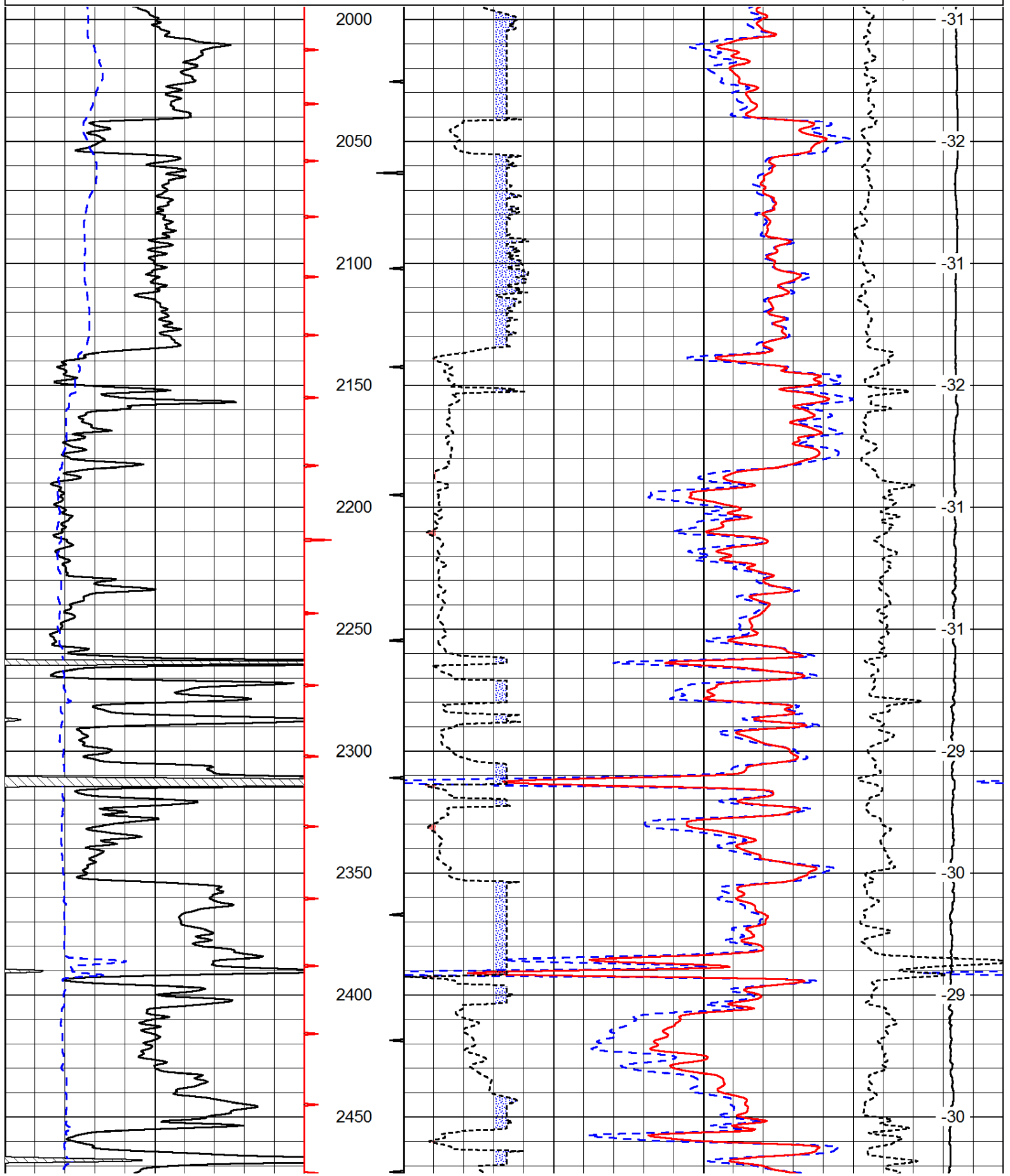
Thank you for using Pioneer Energy Services
www.pioneerenergy.com
 785 625 3858

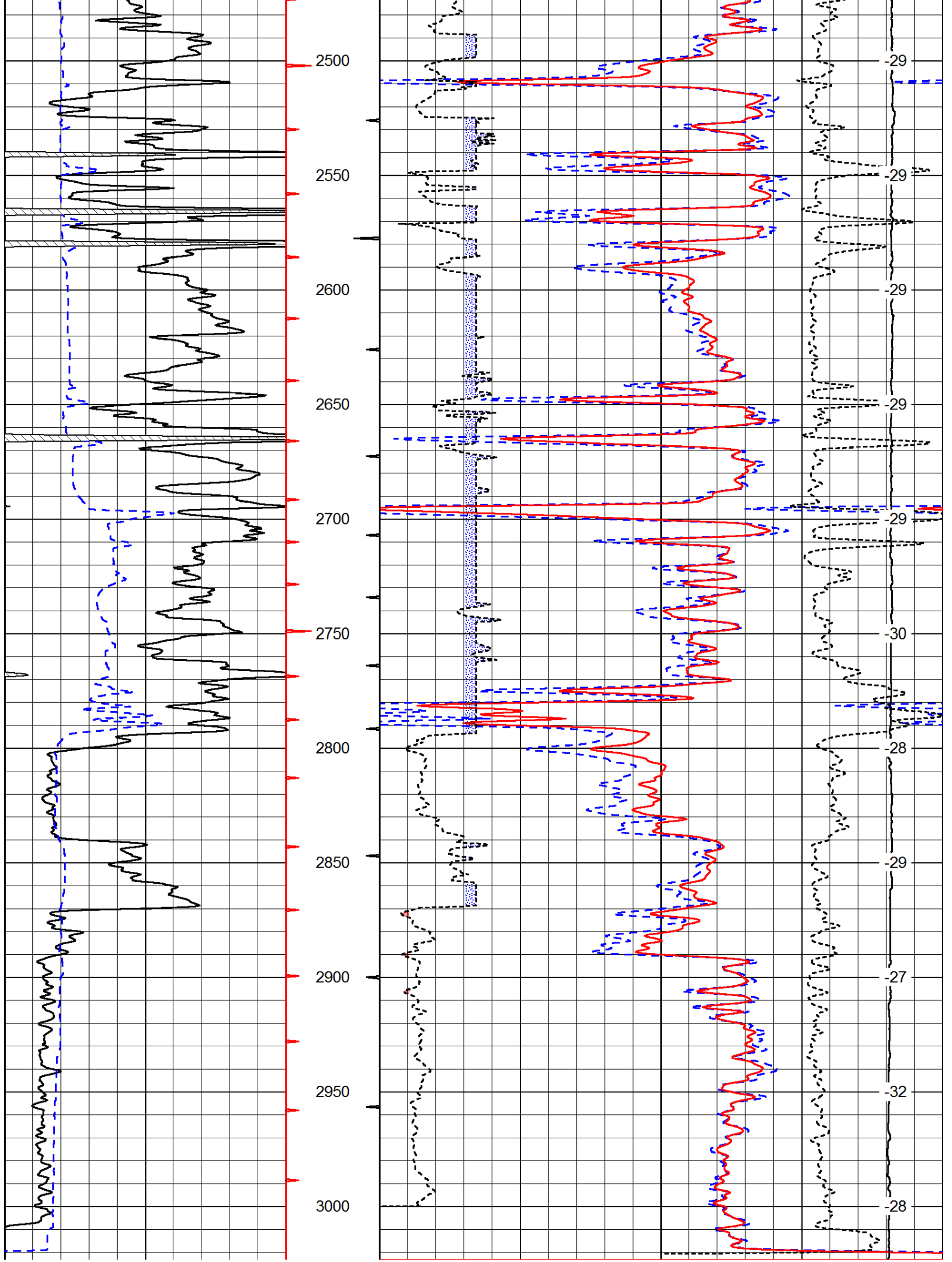
Smileyberg KS, 3 East,
 South Into through Gate, Stay Left at Y

Database File: c:\warrior\data\braden petroleum_bush 'b' #26\braden_bush_b_26hd.db
 Dataset Pathname: DIL\bradstk
 Presentation Format: cdl
 Dataset Creation: Fri Aug 08 07:07:45 2014
 Charted by: Depth in Feet scaled 1:600

0	Gamma Ray	150
6	Caliper (GAPI)	16

30	Compensated Density		-10
2	Bulk Density		3
15000	Line Tension		0
2.625	DGA	3.425	-0.25
			Correction
			0.25
LSPD			

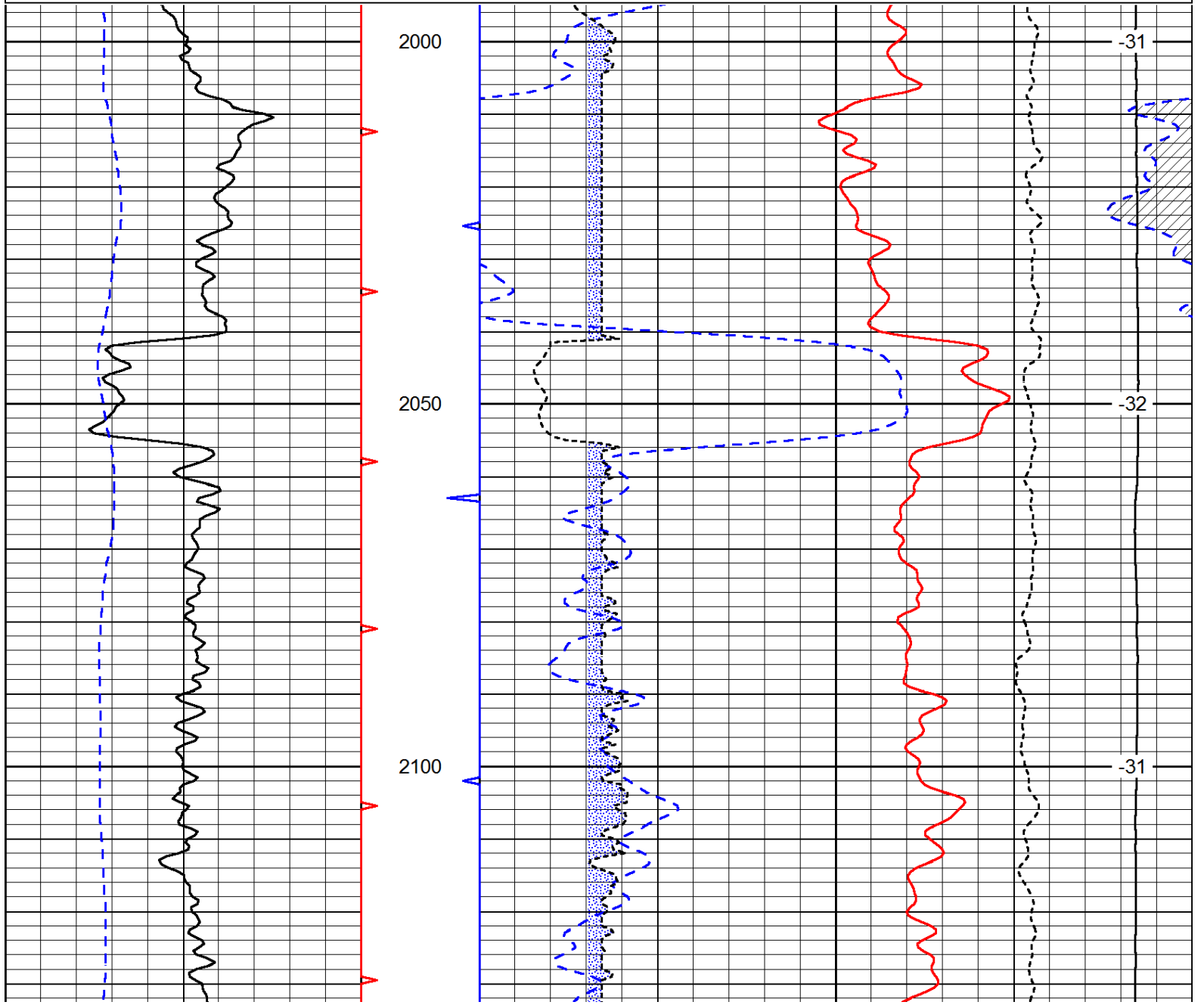


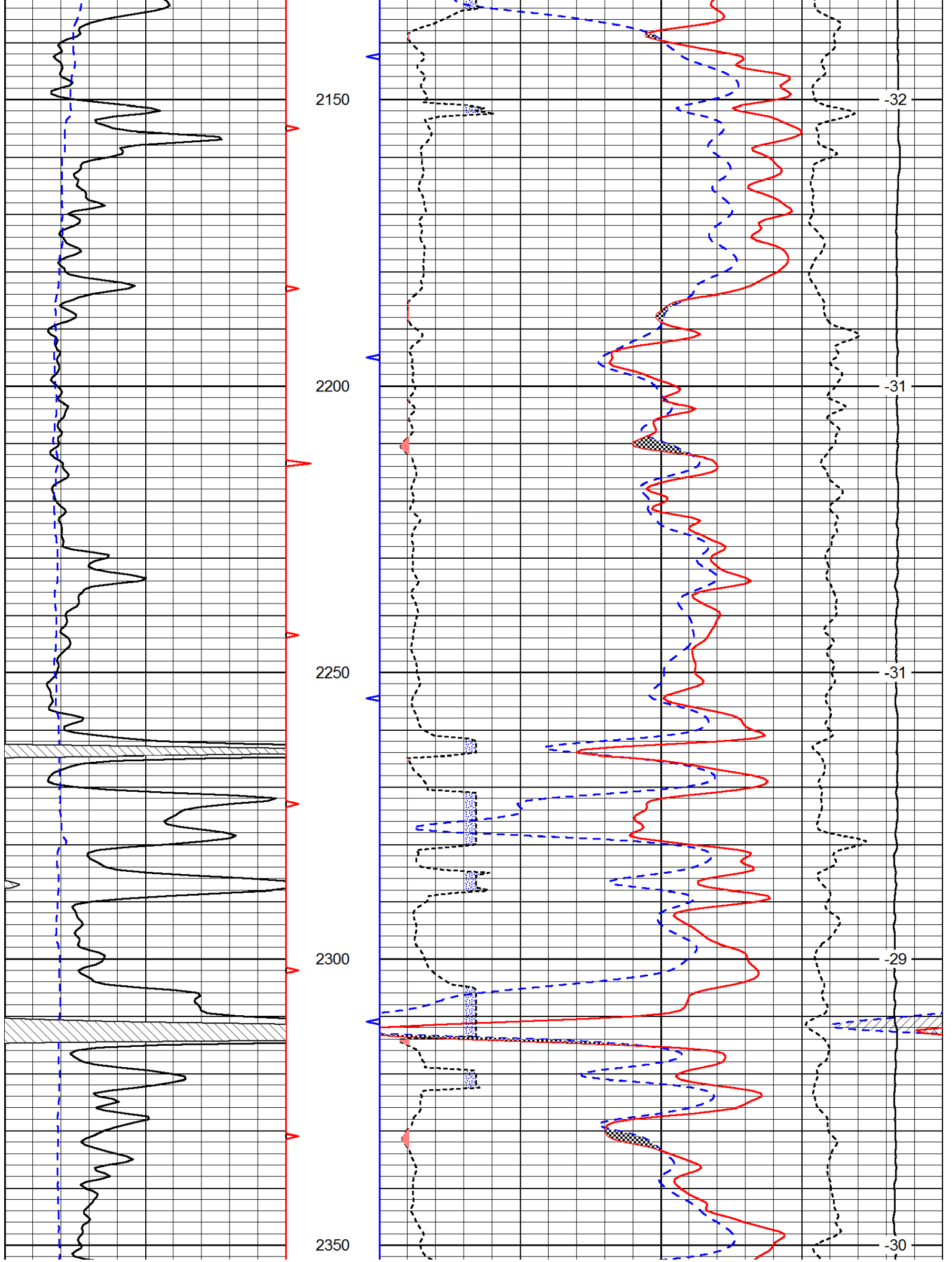


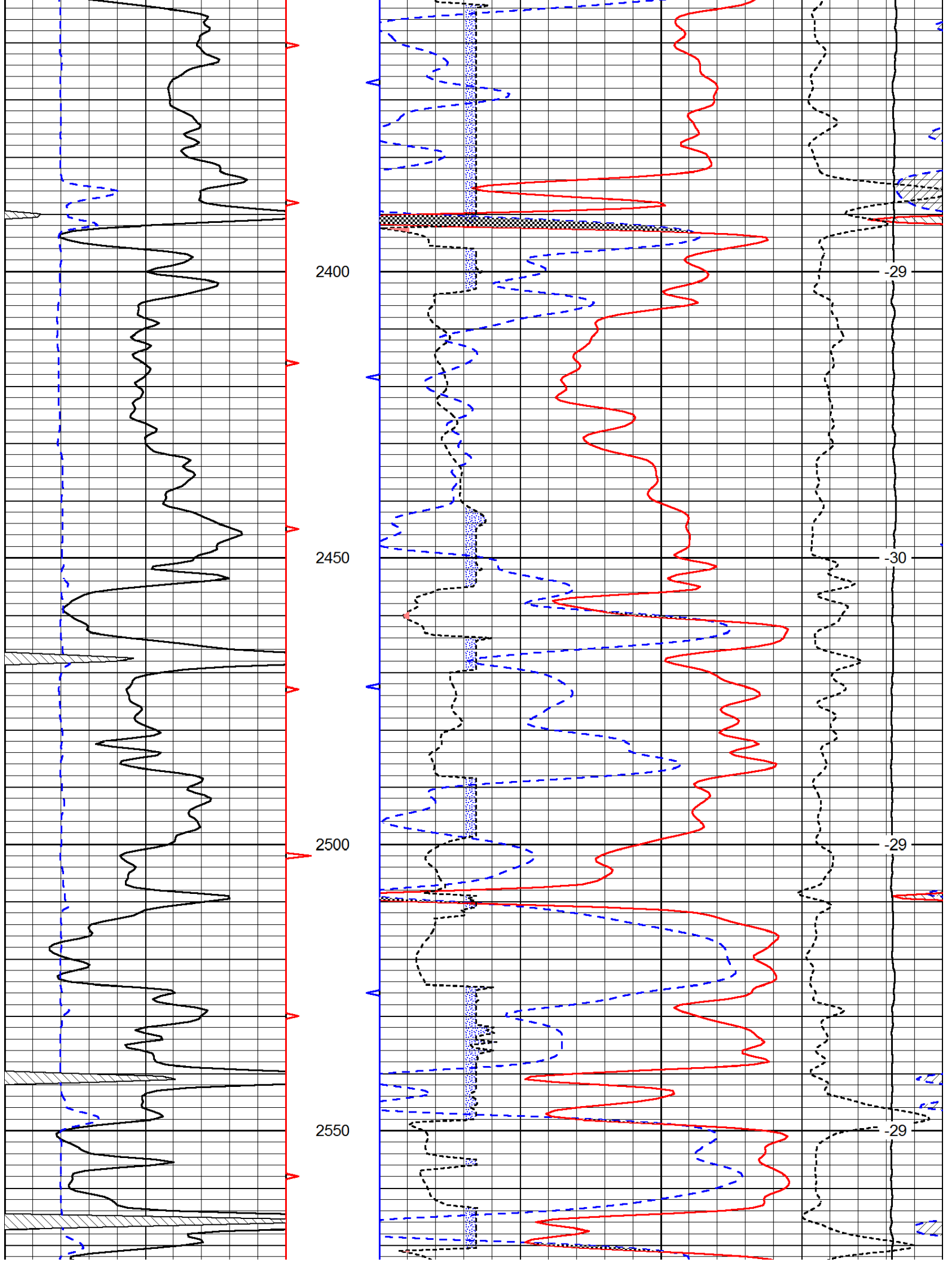
0	Gamma Ray	150	30	Compensated Density		-10
6	Caliper (GAPI)	16	2	Bulk Density		3
			15000	Line Tension		0
	2.625	DGA	3.425	-0.25	Correction	0.25
						LSPD

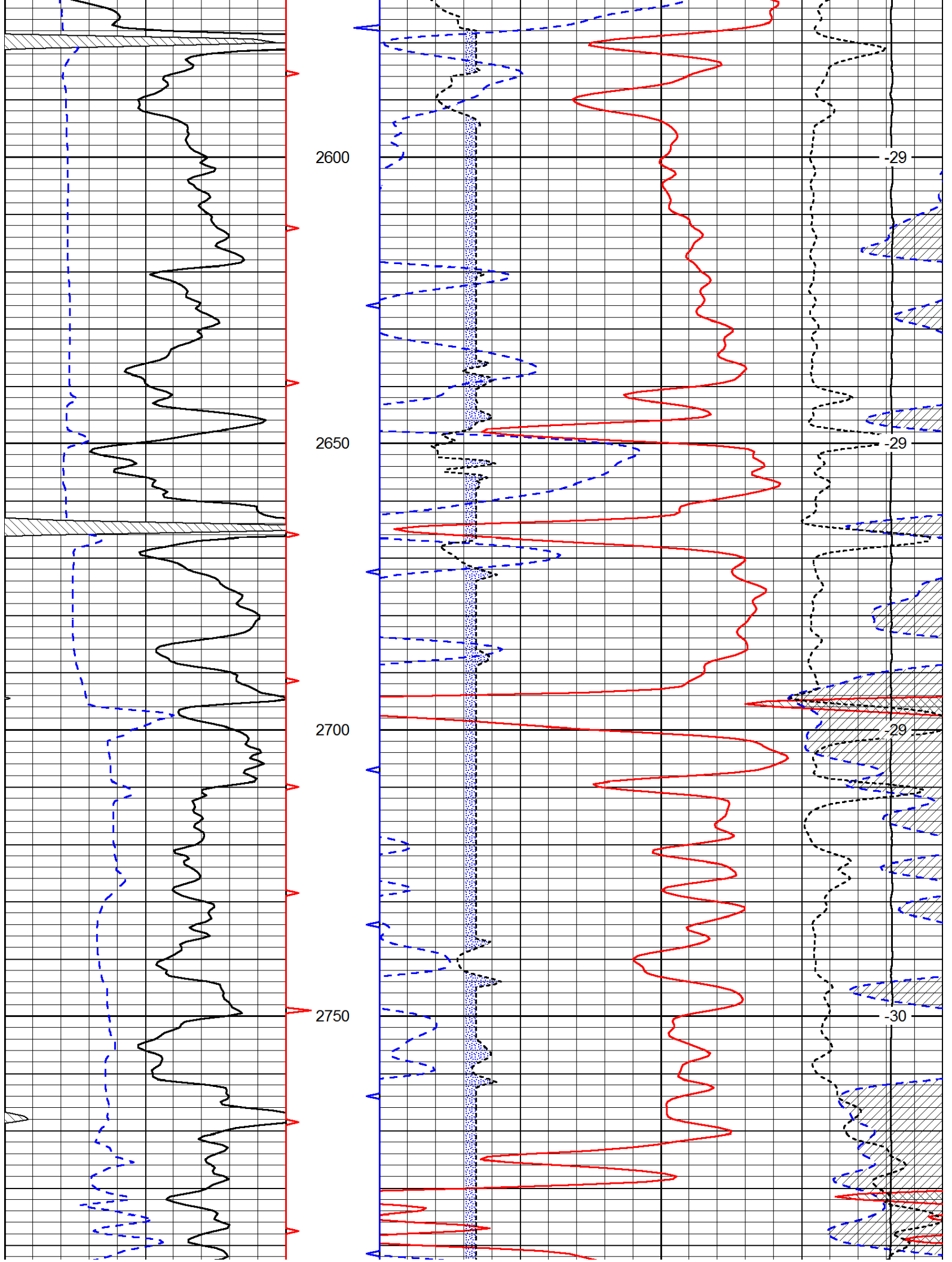
Database File: c:\warrior\data\braden petroleum_bush 'b' #26\braden_bush_b_26hd.db
 Dataset Pathname: DIL/bradstk
 Presentation Format: cndlspec
 Dataset Creation: Fri Aug 08 07:07:45 2014
 Charted by: Depth in Feet scaled 1:240

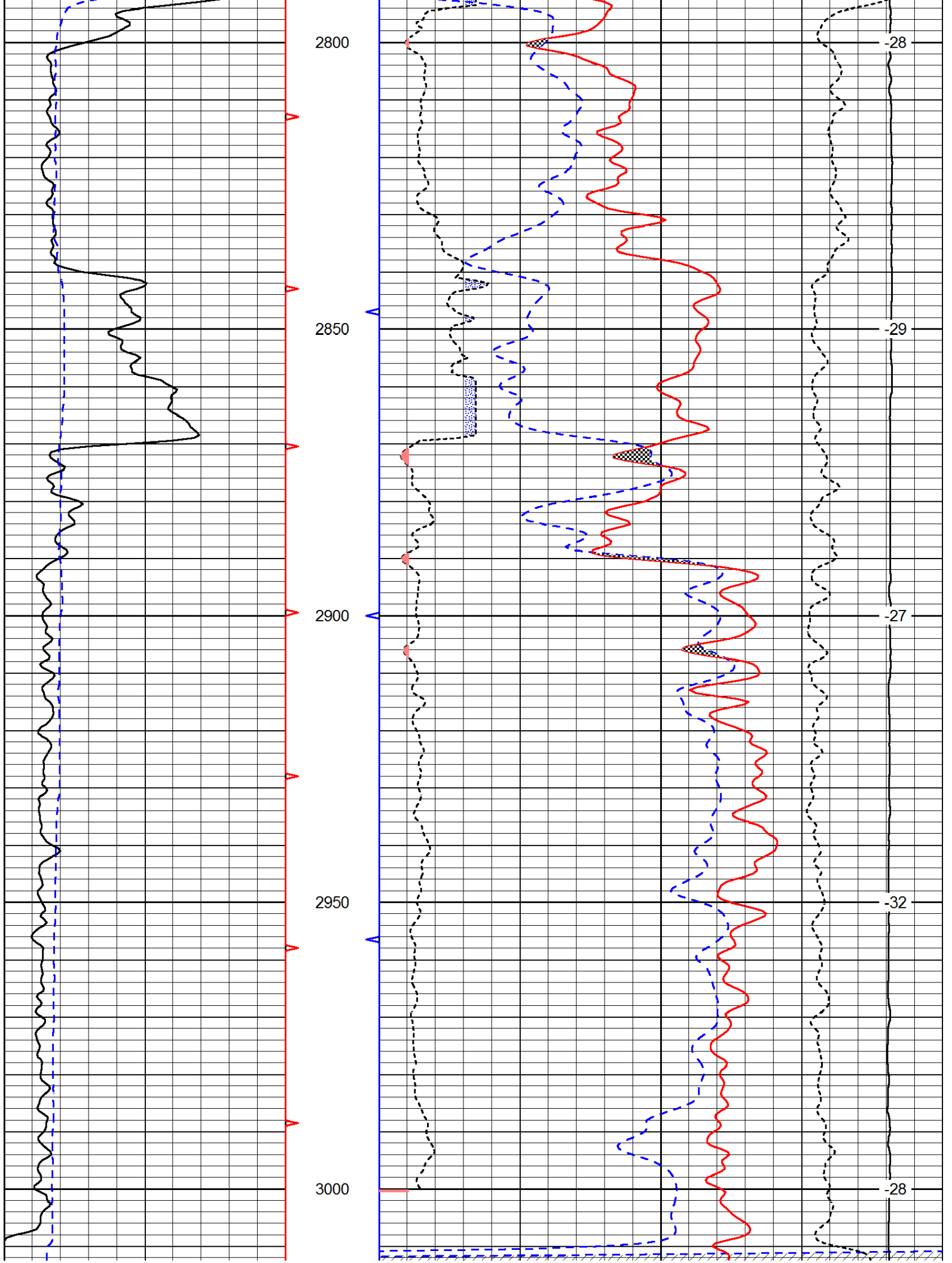
0	Gamma Ray	150	30	Compensated Neutron (Limestone)		-10
6	Caliper (GAPI)	16	30	Compensated Density (Limestone)		-10
	2.625	DGA	3.425	-0.25	Correction	0.25
			15000	Line Tension		0
						LSPD

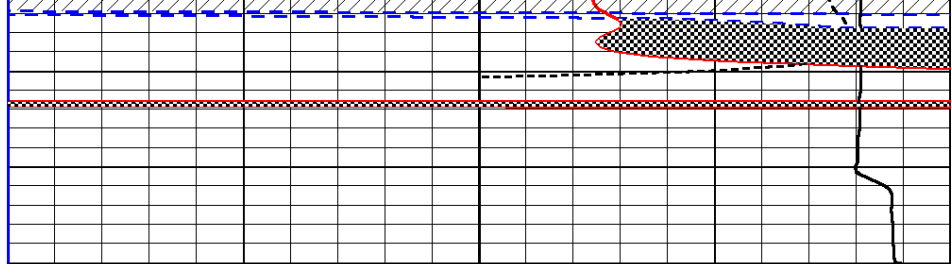
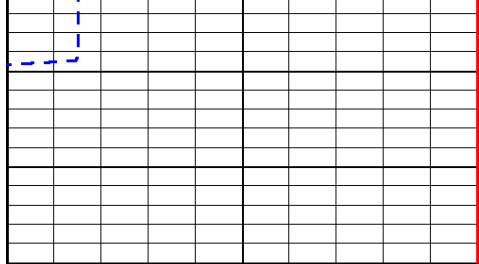












0	Gamma Ray	150
6	Caliper (GAPI)	16

30	Compensated Neutron (Limestone)			-10	
30	Compensated Density (Limestone)			-10	
2.625	DGA	3.425	-0.25	Correction	0.25
15000	Line Tension			0	

LSPD