



WIRELINE
SERVICES, INC.
CHANUTE, KANSAS

GAMMA RAY
NEUTRON
COMPLETION LOG

Company N & W ENTERPRISES, INC.
Well GIEFER #INJ 18
Field WALNUT SE
County CRAWFORD
State KANSAS

Company N & W ENTERPRISES, INC.
Well GIEFER #INJ 18
Field WALNUT SE
County CRAWFORD State KANSAS

Location: API # : 15-037-22260-00-00 Other Services
2640' FSL & 4290' FEL
E/2 E/2 W/2 W/2
SEC 34 TWP 28S RGE 22E
Permanent Datum GL Elevation 962'EST.
Log Measured From GL K.B.
Drilling Measured From GL D.F.
G.L. 962'EST.

Date	5-15-14		
Run Number	1 NW		
Depth Driller	430'		
Depth Logger	411.3'		
Top Log Interval	0		
Bottom Logged Interval	411.3'		
Fluid Level	FULL		
Type Fluid	WATER		
Production Casing	2 7/8" @ TD	@	@
Max. Recorded Temp.			
Estimated Cement Top			
Calculated Cement Top			
Amount & Type Cement			
Amount & Type Admix			
Drilling Contractor			
Equipment Number	103		
Location			
Recorded By	SOLOMON, B.		
Witnessed By	NORRIS, T.		

<<< Fold Here >>>

All interpretations are opinions based on inferences from electrical or other measurements and we cannot and do not guarantee the accuracy or correctness of any interpretation, and we shall not, except in the case of gross or willful negligence on our part, be liable or responsible for any loss, costs, damages, or expenses incurred or sustained by anyone resulting from any interpretation made by any of our officers, agents or employees. These interpretations are also subject to our general terms and conditions set out in our current Price Schedule.

Comments

THANK YOU

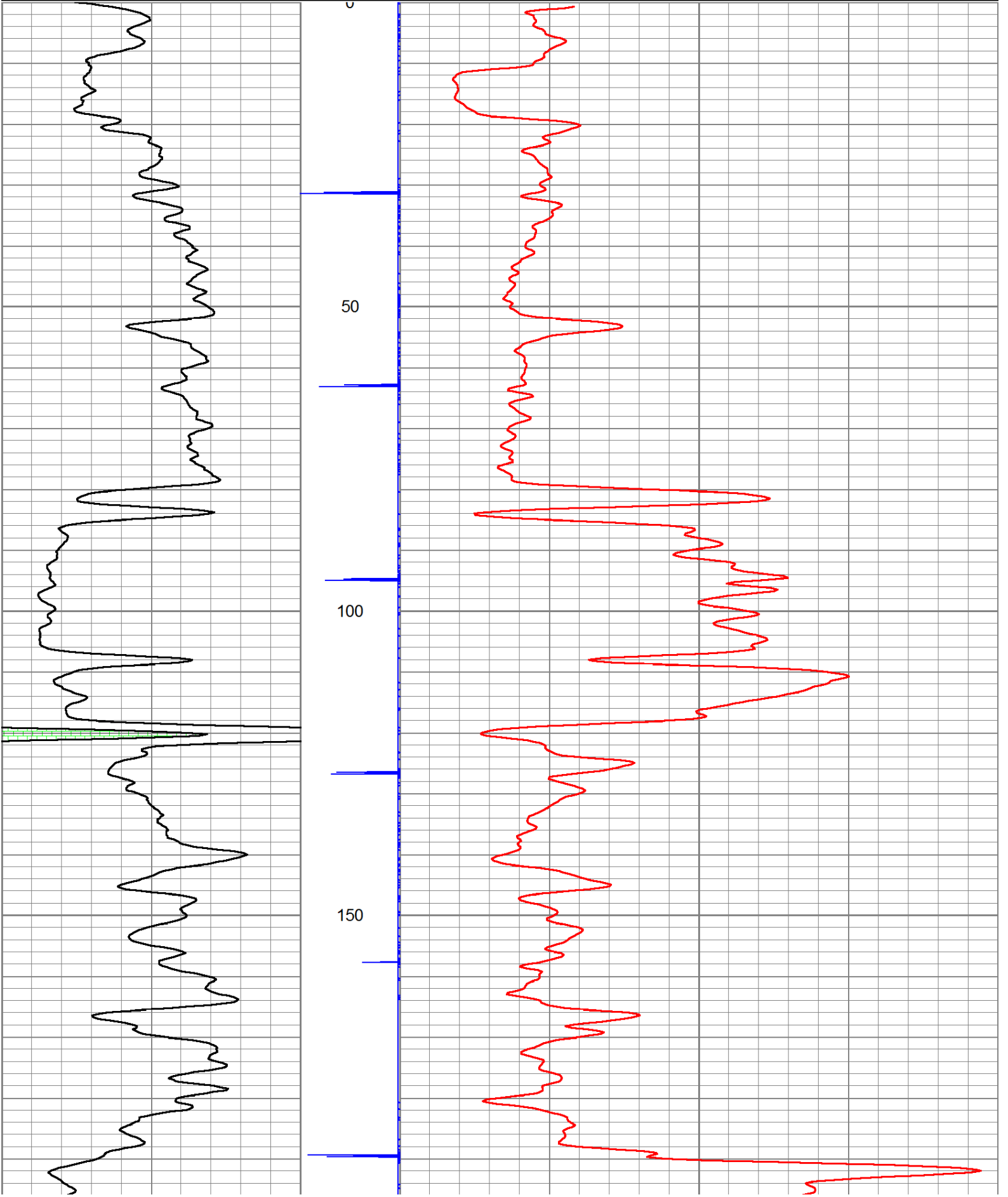
Sensor	Offset (ft)	Schematic	Description	Len (ft)	OD (in)	Wt (lb)

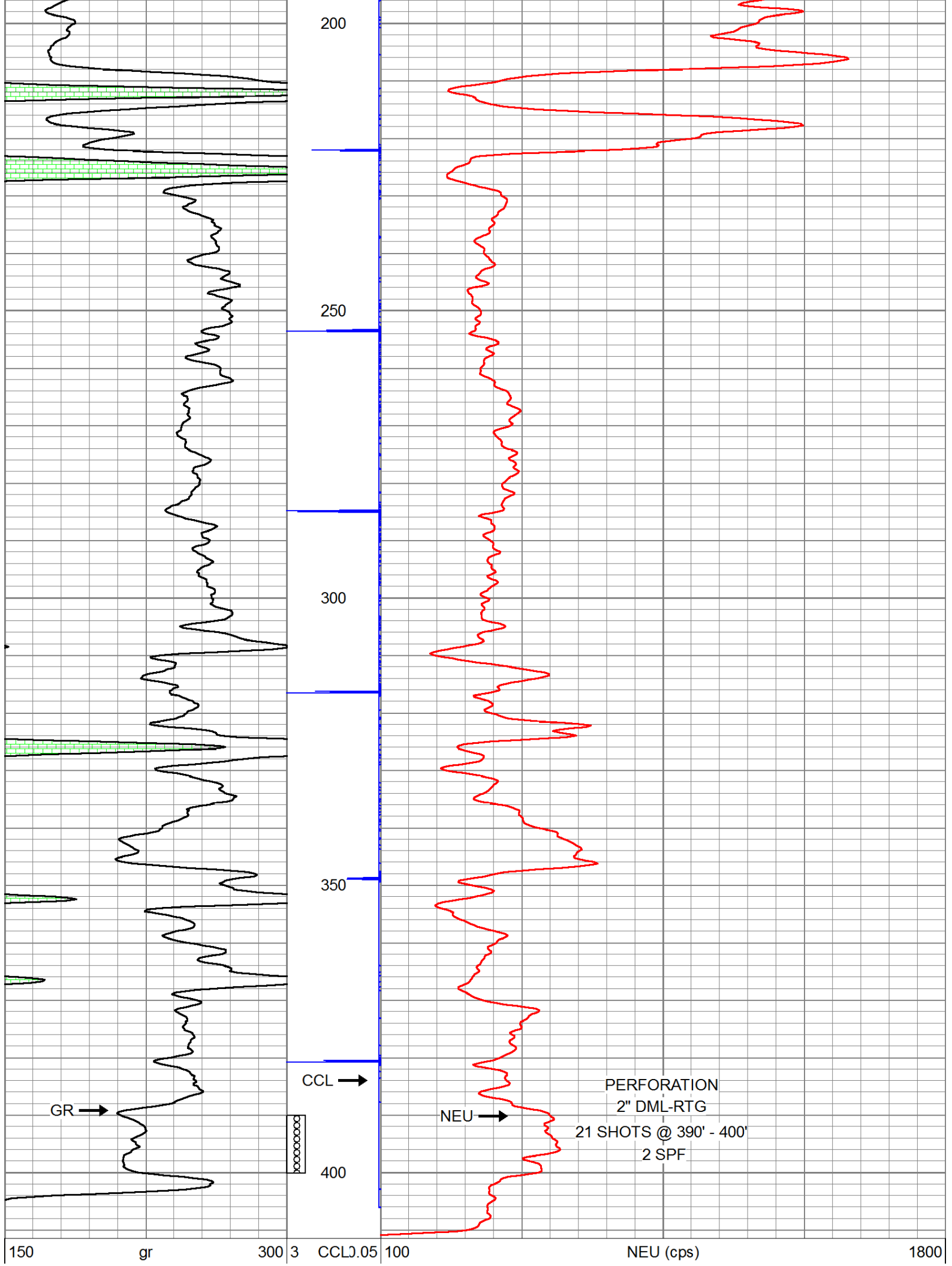
GR	7.59		GR-TITAN_169 (TIT169_001) Titan 1 11/16" Gamma Ray	4.75	1.69	20.00
CCL	5.05		CCL-TITAN_169 (TIT169) Titan 1 11/16" Logging CCL	1.83	1.69	7.50
NEU	0.63		NEU-TITAN (TIT801) TITAN 1 11/16" Neutron	4.33	1.69	25.00

Dataset: giefer #inj 18.db: field/well/run1/pass3
 Total Length: 10.92 ft
 Total Weight: 52.50 lb
 O.D. 1.69 in

Database File: p:\logs\n & w enterprises\giefer #inj 18\giefer #inj 18.db
 Dataset Pathname: pass2
 Presentation Format: gr-n-ccl

150	gr	300	3	CCLJ.05	100	NEU (cps)	1800
0	GR	150					





200

250

300

350

400

GR →

CCL →

NEU →

PERFORATION
 2" DML-RTG
 21 SHOTS @ 390' - 400'
 2 SPF

150 gr 300 3 CCL0.05 100 NEU (cps) 1800



Company	N & W ENTERPRISES, INC.		
Well	GIEFER #INJ 18		
Field	WALNUT SE		
County	CRAWFORD	SEC. 34	TWP. 28S RGE. 22E
State	KANSAS	Date	5-15-14