



**Weatherford**<sup>®</sup>

CALIPER

LOG

COMPANY	MCCOY PETROLEUM CORPORATION		
WELL	UMCC A 1-17		
FIELD	WILDCAT		
PROVINCE/COUNTY	MEADE		
COUNTRY/STATE	U.S.A. / KANSAS		
LOCATION	2310' FSL & 990' FWL OF THE NE NW SW		
SEC	TWP	RGE	Other Services
17	30S	30W	MPD/MDN
API Number	15-119-21363		MAI/MFE
Permit Number	MML		
Permanent Datum GL, Elevation	2816 feet		Elevations:
Log Measured From	KB		2827.00
Drilling Measured From	KB AT 11 FEET		DF 2825.00
			GL 2816.00
Date	04-MAR-2014		
Run Number	ONE		
Service Order	5872-8112334		
Depth Driller	5700.00 feet		
Depth Logger	5702.00 feet		
First Reading	5681.00 feet		
Last Reading	1829.00 feet		
Casing Driller	1828.00 feet		
Casing Logger	1829.00 feet		
Bit Size	7.875		inches
Hole Fluid Type	CHEM		
Density / Viscosity	9.30 lb/USg	62.00 CP	
PH / Fluid Loss	10.00	8.00 ml/30Min	
Sample Source	FLOW LINE		
Rm @ Measured Temp	1.40 @ 70.0	ohm-m	
Rmf @ Measured Temp	1.12 @ 70.0	ohm-m	
Rmc @ Measured Temp	1.68 @ 70.0	ohm-m	
Source Rmf / Rmc	CALC	CALC	
Rm @ BHT	0.83 @ 118.0	ohm-m	
Time Since Circulation	4 HRS		
Max Recorded Temp	118.00	deg F	
Equipment / Base	13057	LIB	
Recorded By	D. COLE		
Witnessed By	D. WILLIAMS		
JOB #	LB 14-063		

**BOREHOLE RECORD**

Last Edited: 04-MAR-2014 07:55

Bit Size inches	Depth From feet	Depth To feet
7.875	1828.00	5700.00

**CASING RECORD**

Type	Size inches	Depth From feet	Shoe Depth feet	Weight pounds/ft
CASING	8.625	0.00	1828.00	24.00

**REMARKS**

- SOFTWARE ISSUE: WLS 13.05.9583.
- MCG, MML, MDN, MPD, MFE, AND MAI RAN IN COMBINATION.
  - HARDWARE: DUAL BOWSPRING USED ON MDN.
  - 0.5 INCH STANDOFF USED ON MFE.
  - TWO 0.5 INCH STANDOFFS USED ON MSS.
  - 0.5 INCH STANDOFF USED ON MAI.
- 2.71 G/CC LIMESTONE DENSITY MATRIX USED TO CALCULATE POROSITY.
- BOREHOLE RUGOSITY, TIGHT PULLS, AND WASHOUTS WILL AFFECT DATA QUALITY.
- ALL INTERVALS LOGGED AND SCALED PER CUSTOMER'S REQUEST.
- TOTAL HOLE VOLUME FROM TD TO 4000 FEET: 600 CU. FT.
- ANNULAR HOLE VOLUME WITH 5.5 INCH PRODUCTION CASING FROM TD TO 4000 FEET: 320 CU. FT.

- RIG: STIRLING

- ENGINEER: D. COLE

- OPERATOR(S): K. PHILLIPS AND C. RAMIREZ

- LCM: 6 LBS/PBL

- CHLORIDES: 1800 PPM

All interpretations are opinions based on inferences from electrical or other measurements and we cannot, and do not, guarantee the accuracy or correctness of any interpretations, and we shall not, except in the case of gross or wilful negligence on our part, be liable or responsible for any loss, costs, damages or expenses incurred or sustained by anyone resulting from any interpretation made by any of our officers, agents or employees. These interpretations are also subject to our general terms and conditions in our price schedule.

### 5 INCH CALIPER LOG

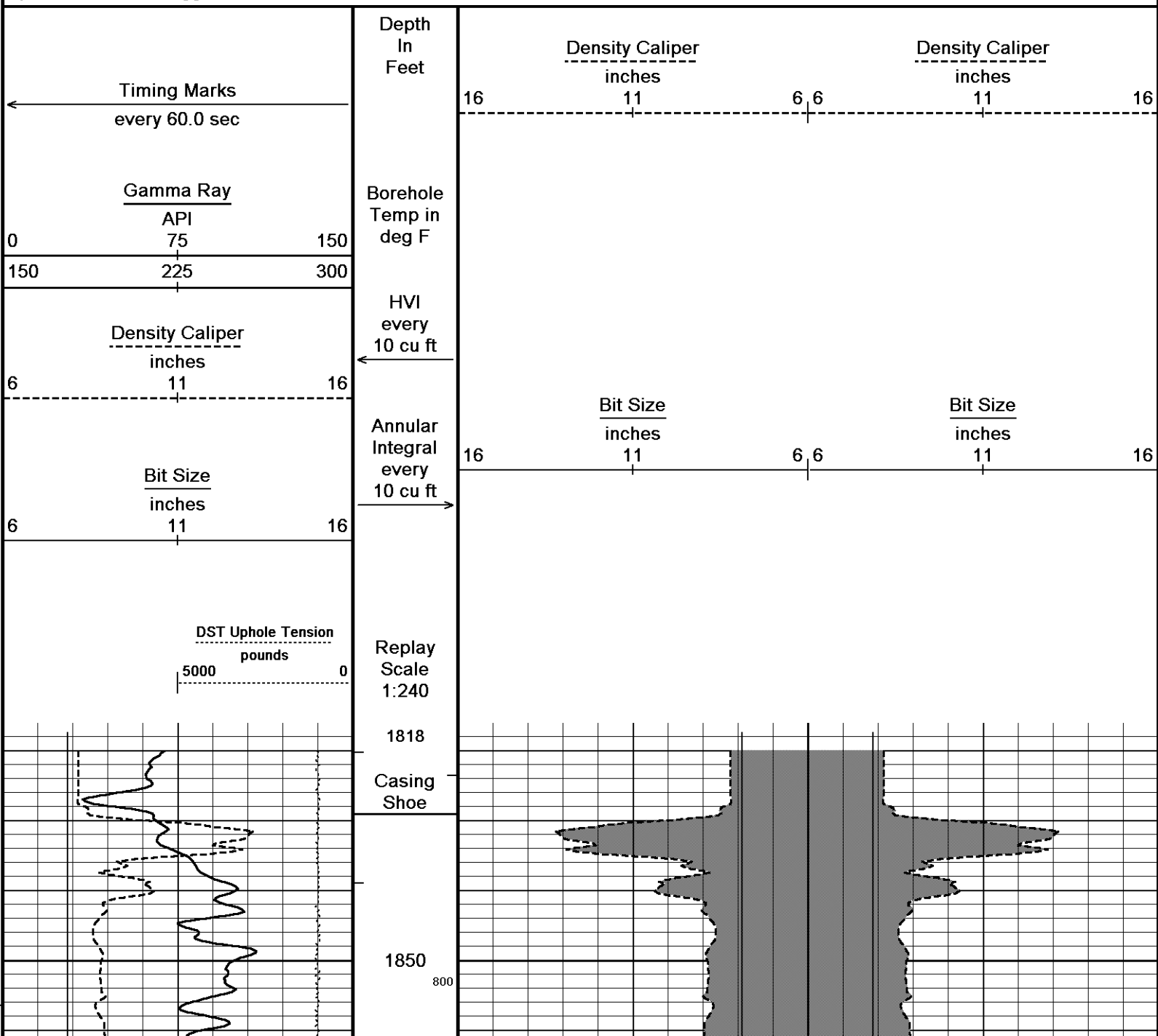
Depth Based Data - Maximum Sampling Increment 10.0cm

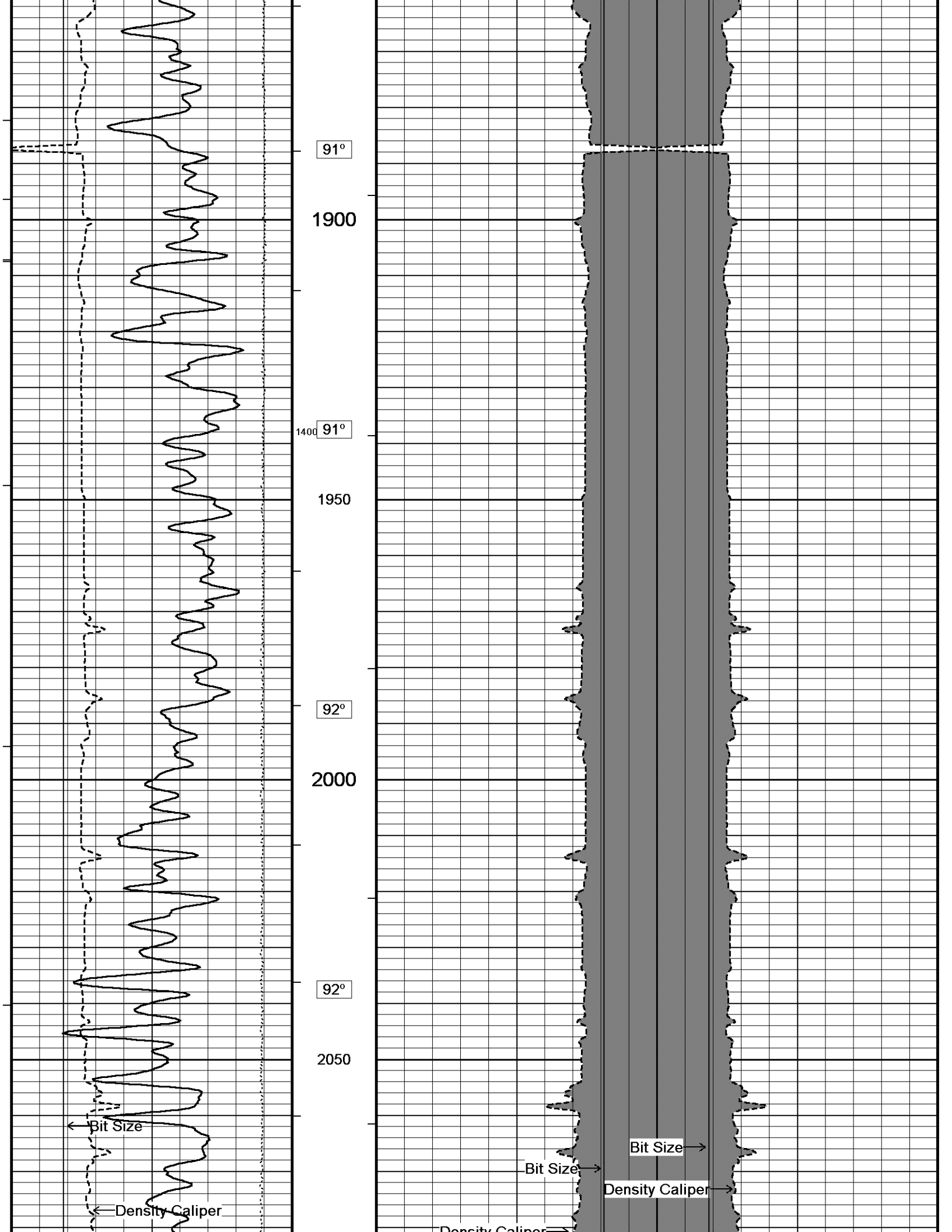
Plotted on 04-MAR-2014 13:46

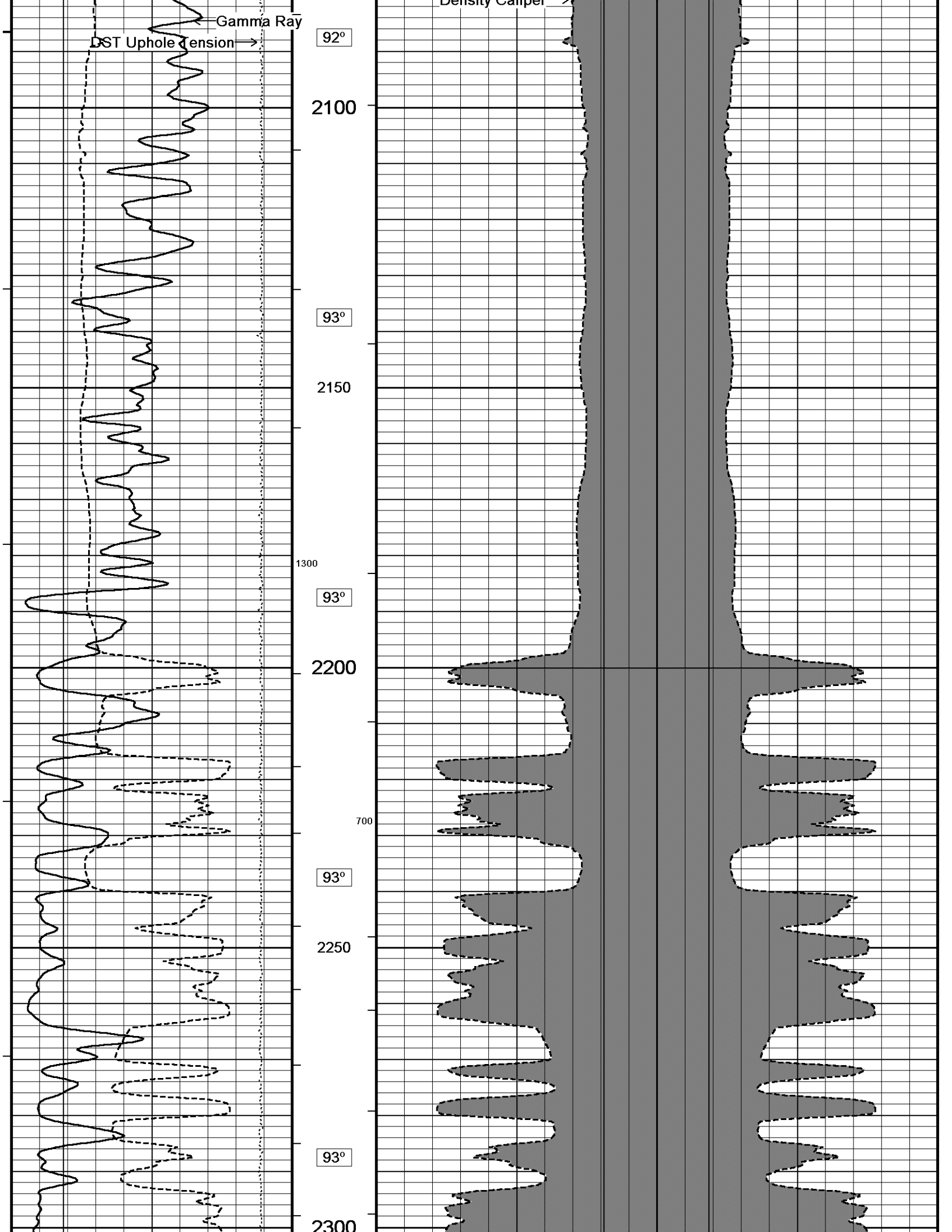
Filename: C:\Minimus 13.05.9583\Logs\MCCOY UMCC A 1-17\MCCOY UMCC A 1-17 MAIN.dta

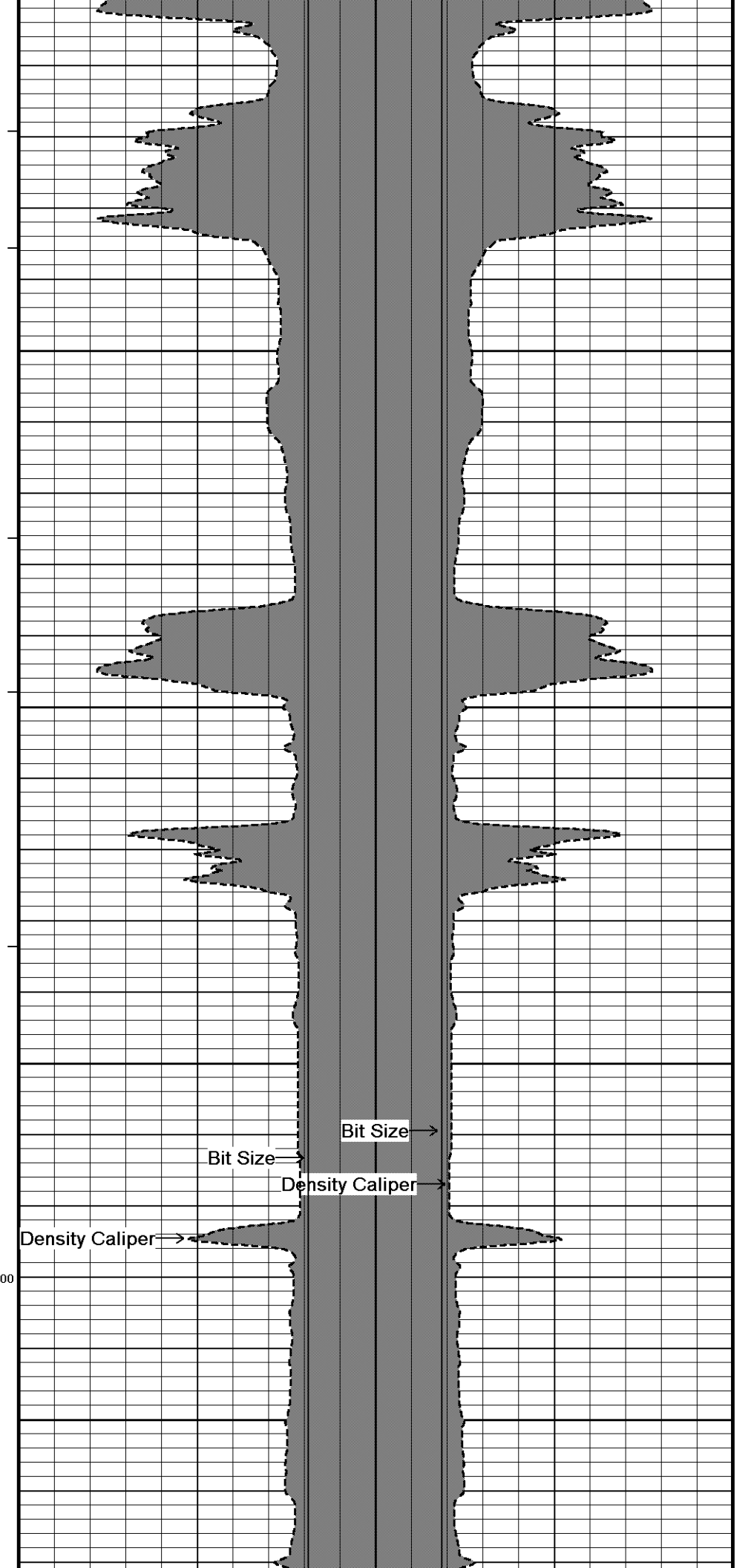
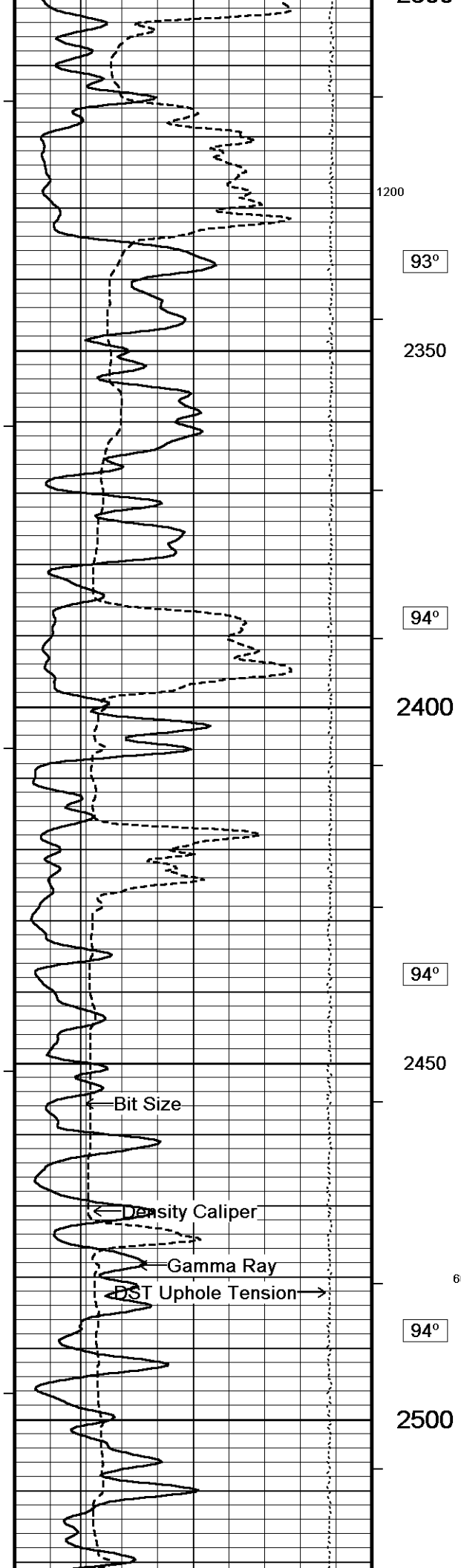
Recorded on 04-MAR-2014 10:53

System Versions: Logged with 13.05.9583 Processed with 13.05.9583 Plotted with 13.05.9583



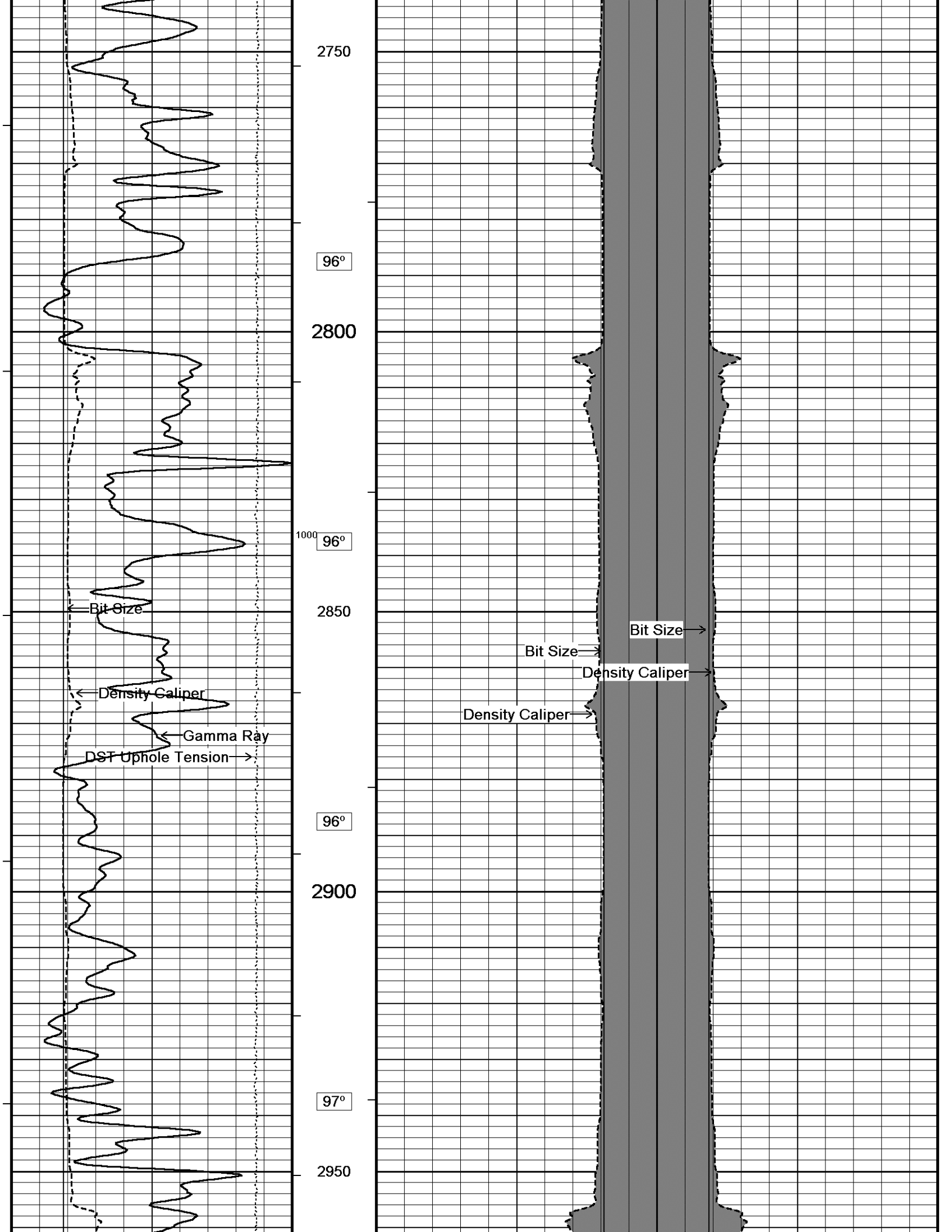


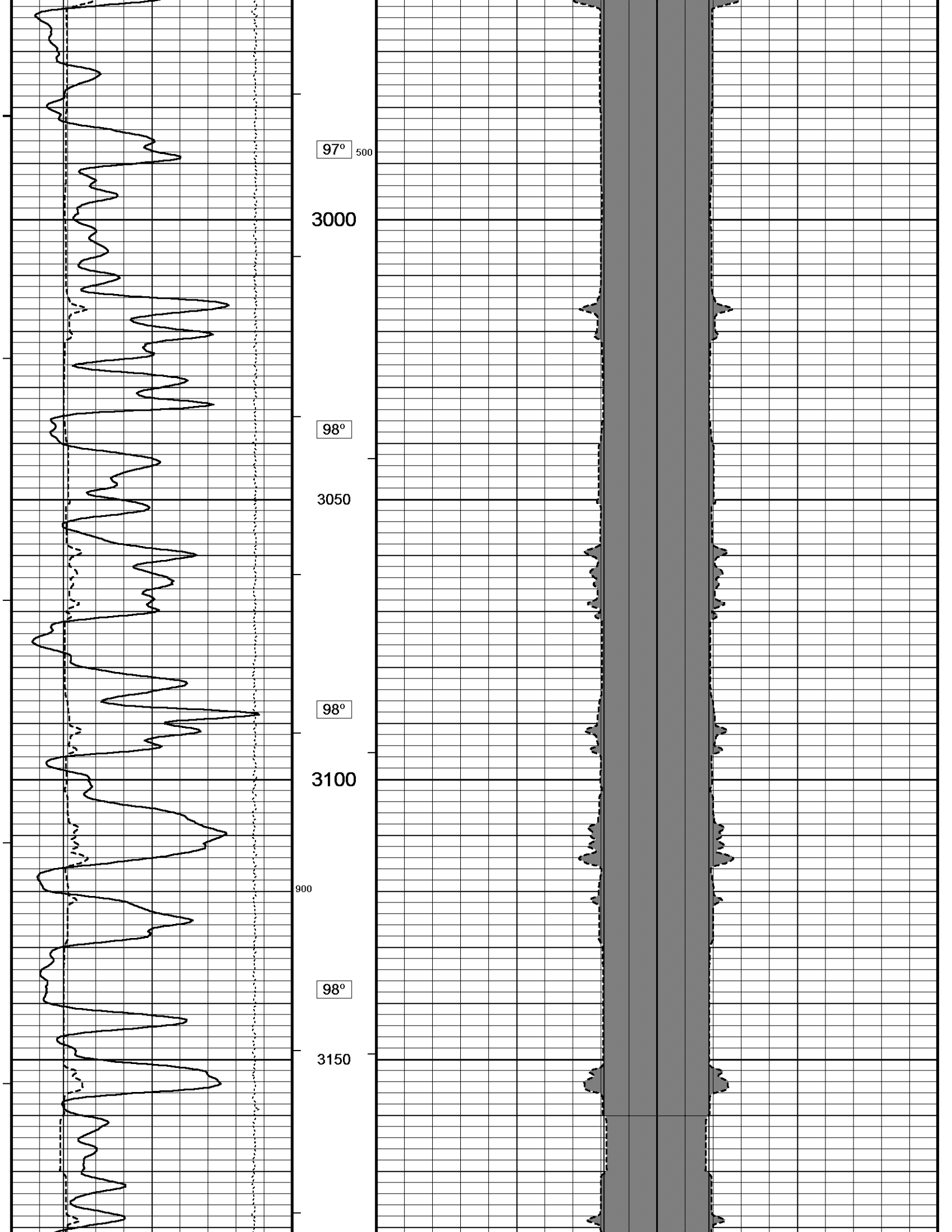


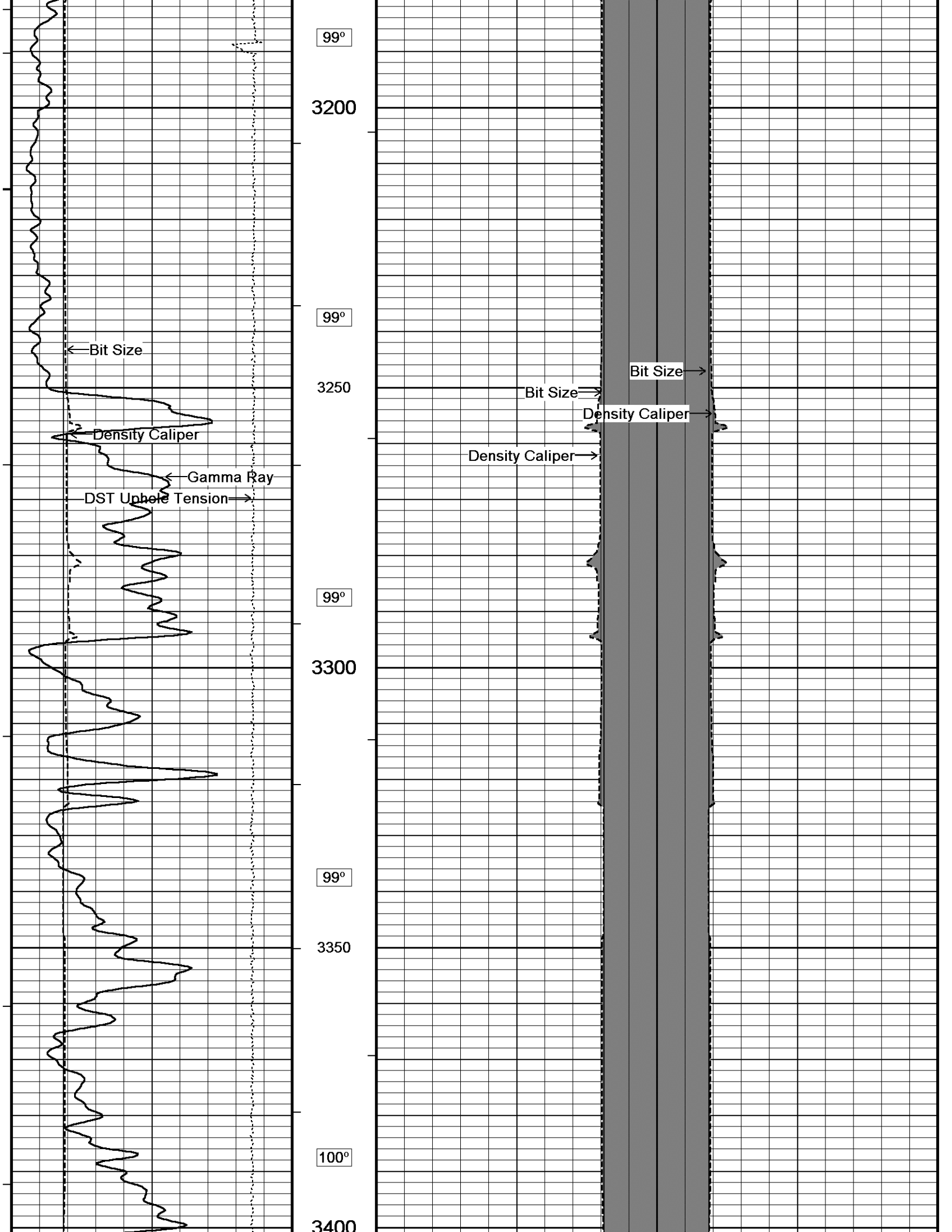


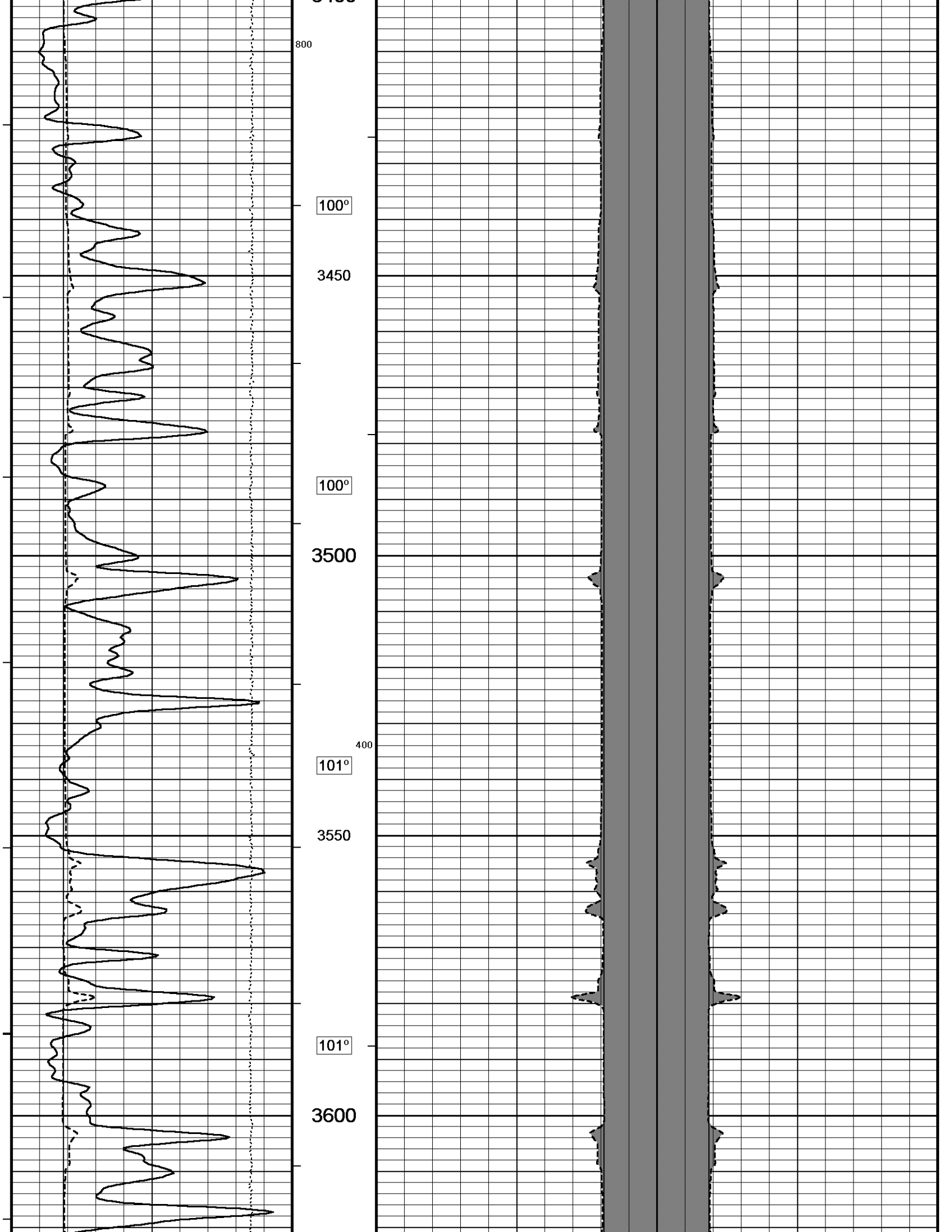
1200  
93°  
2350  
94°  
2400  
94°  
2450  
600  
94°  
2500

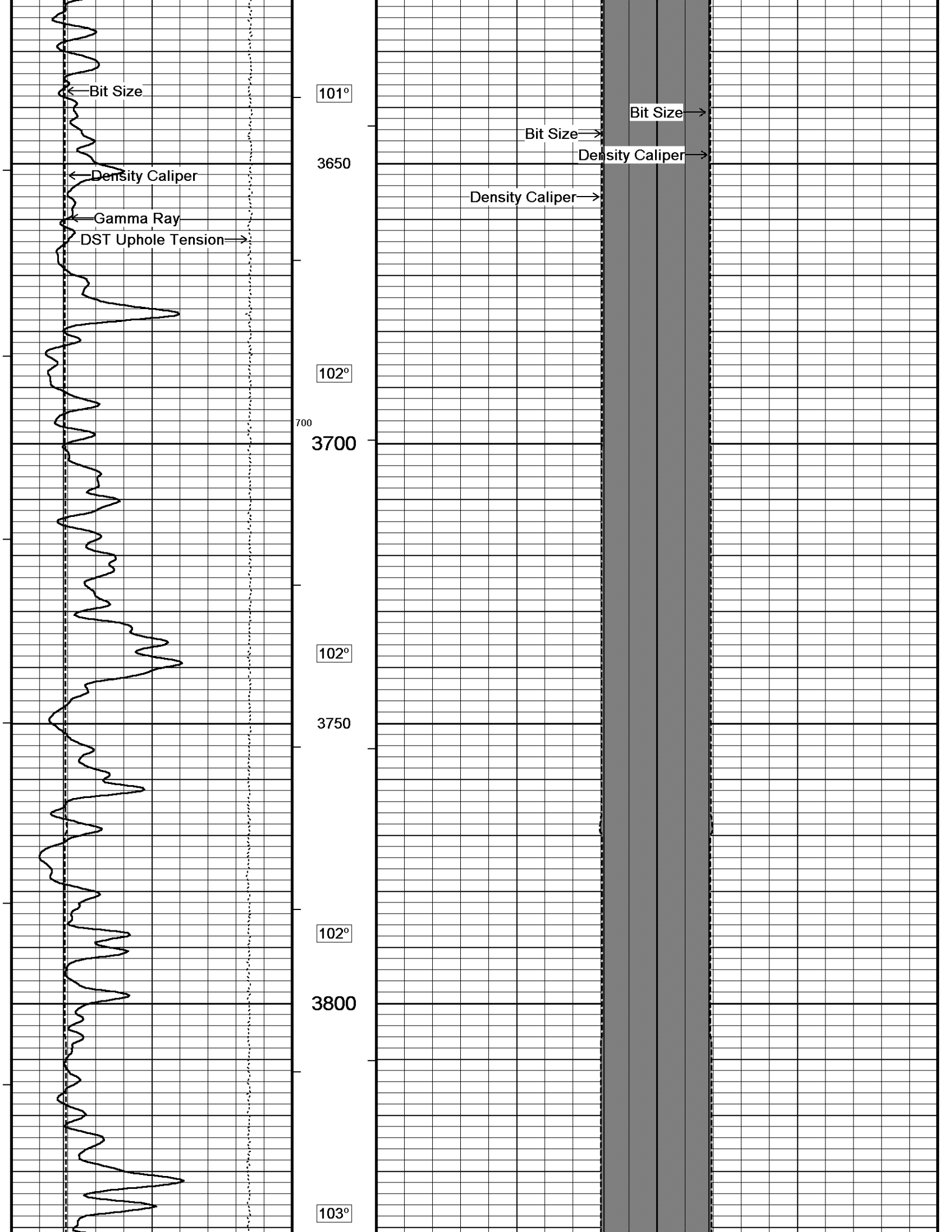


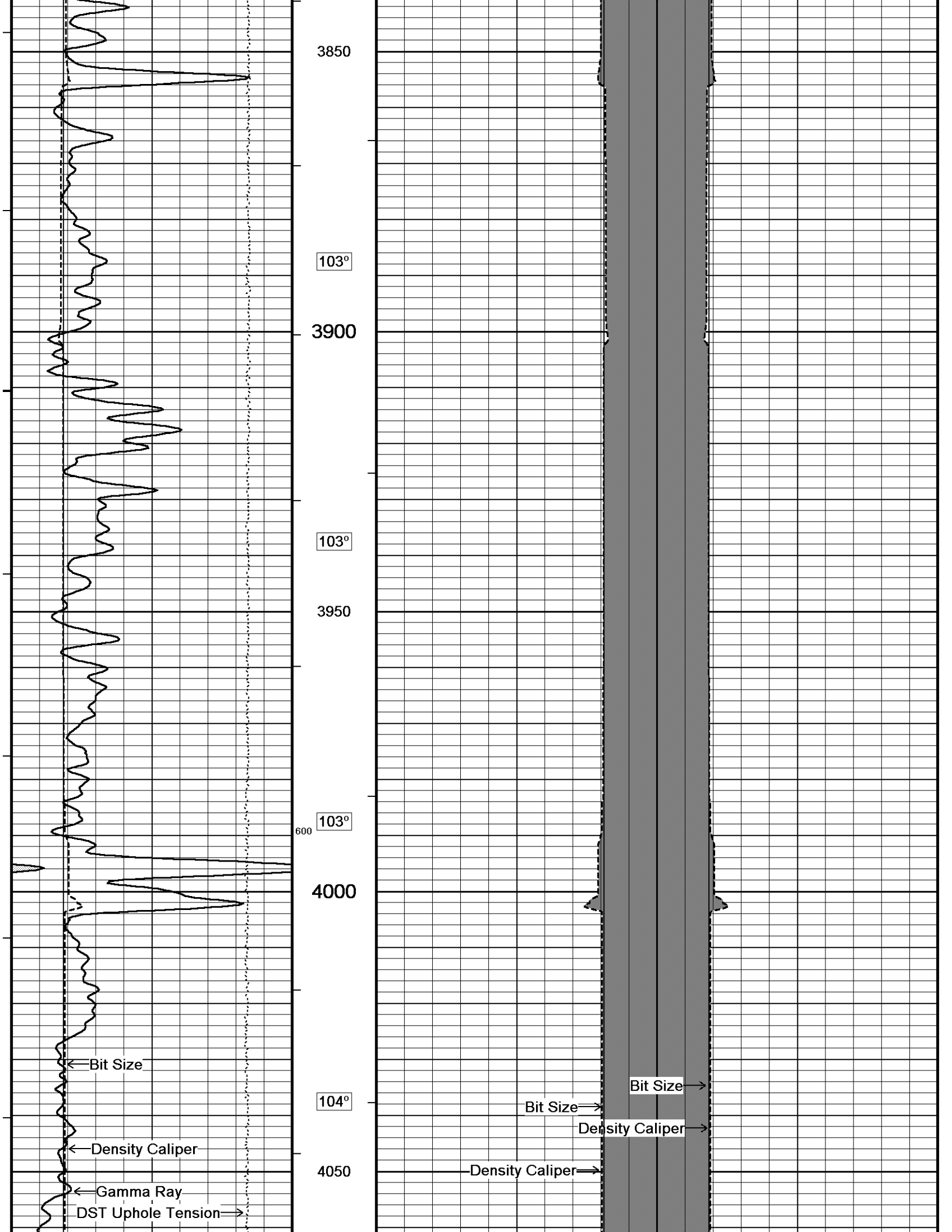


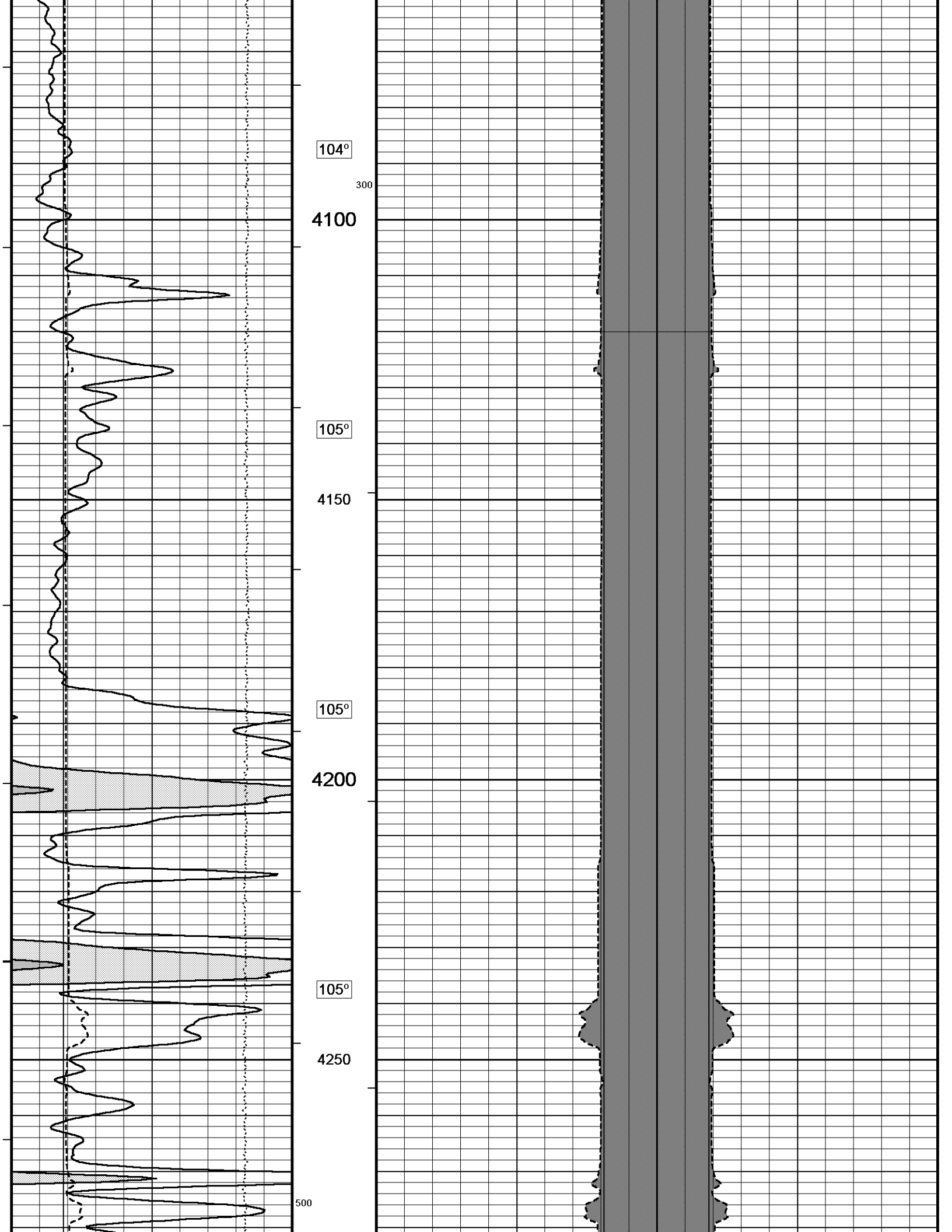


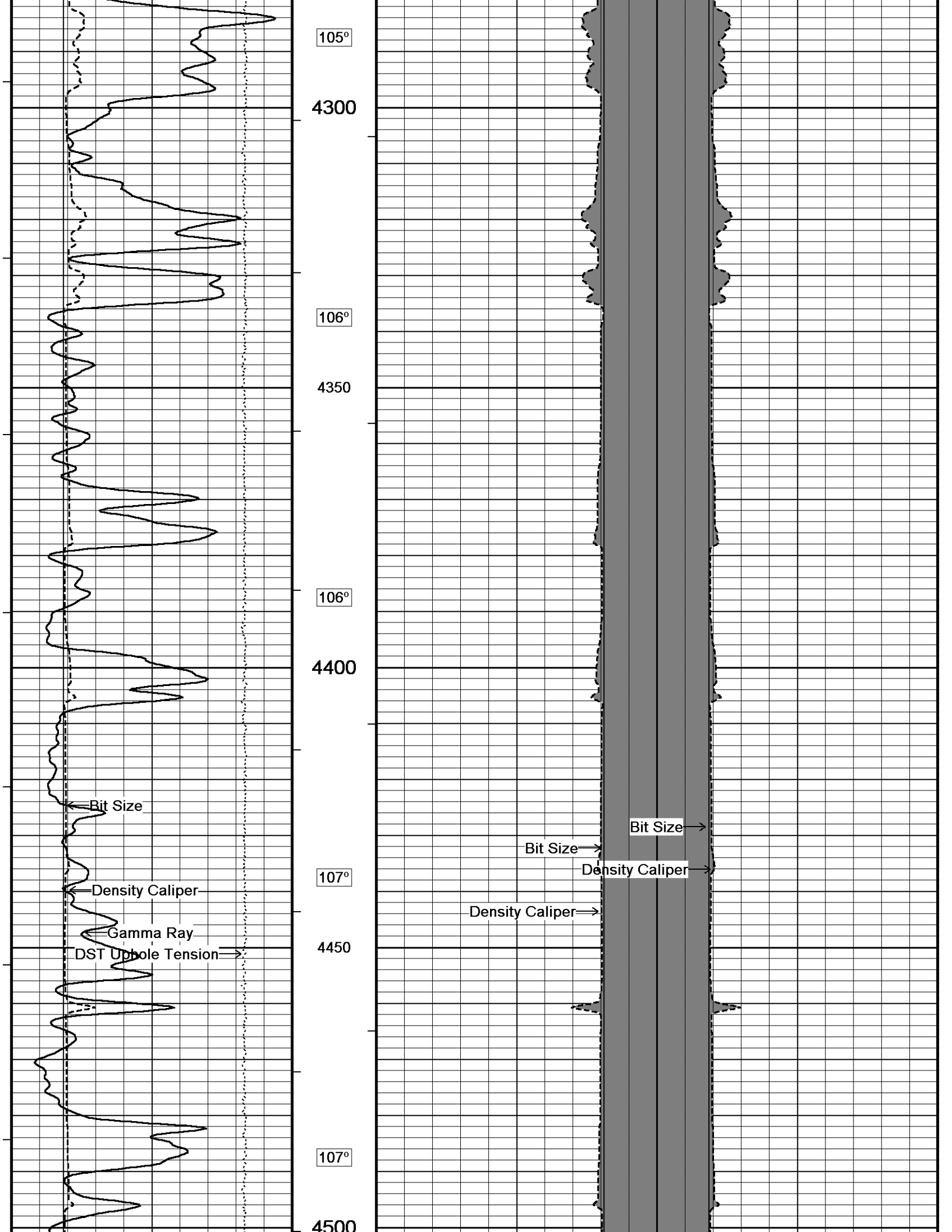


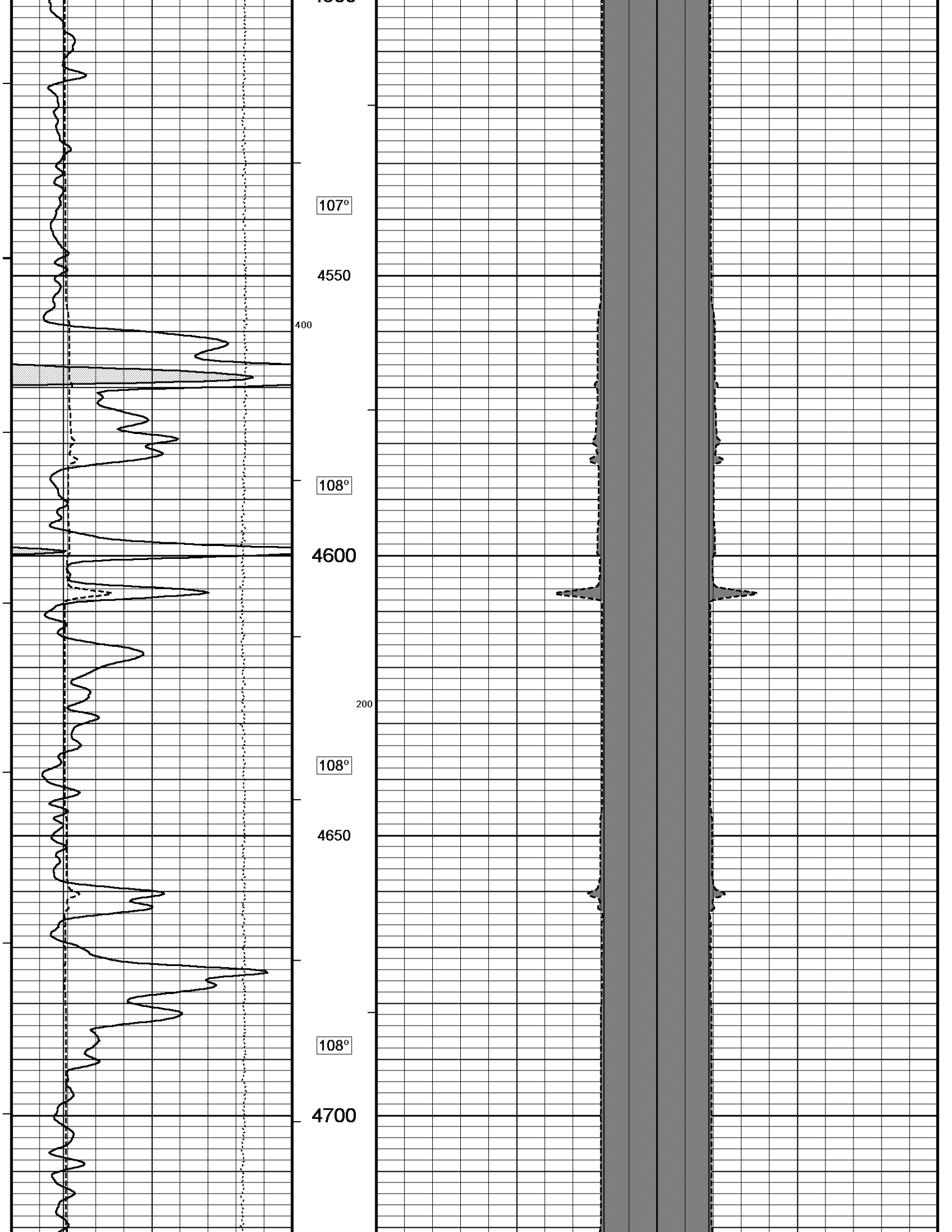


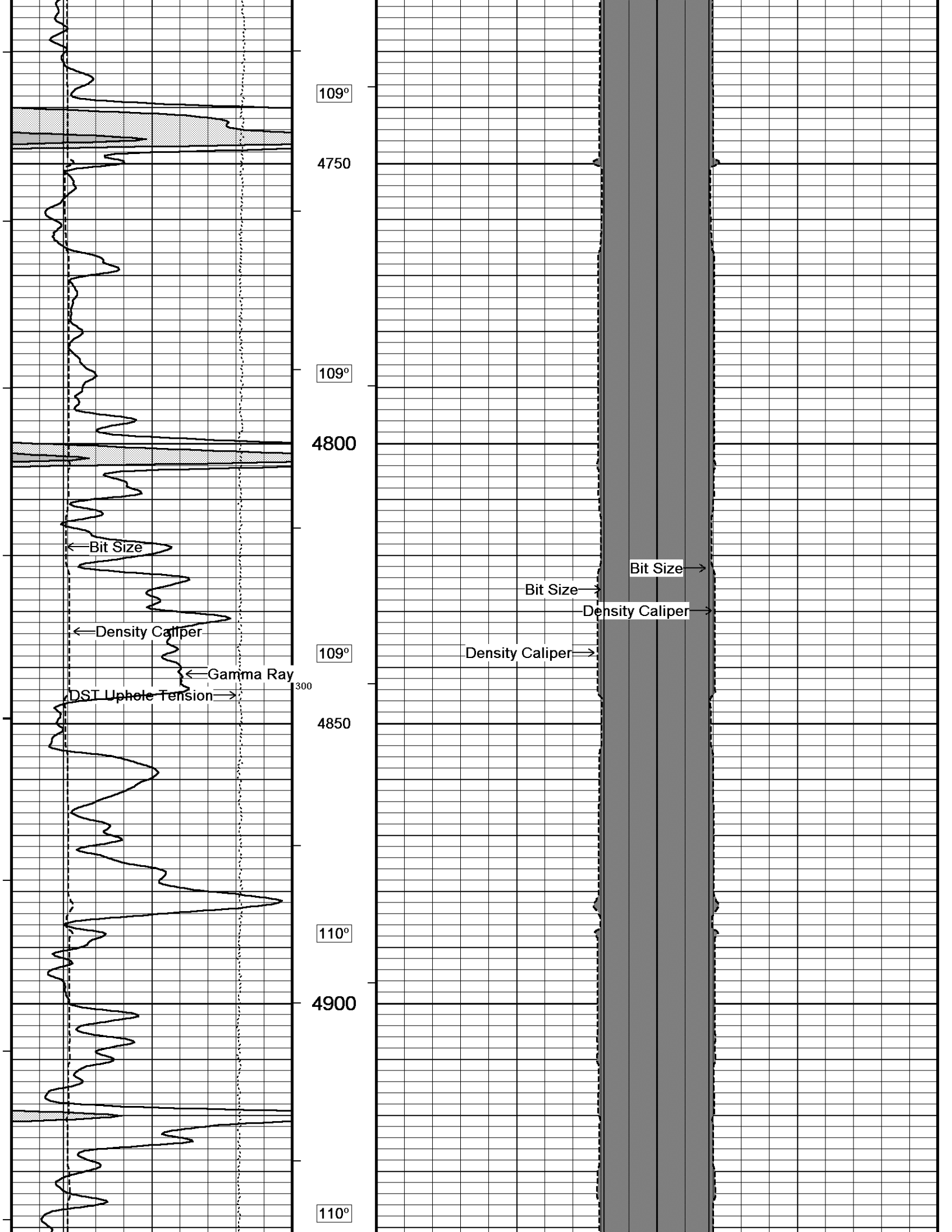


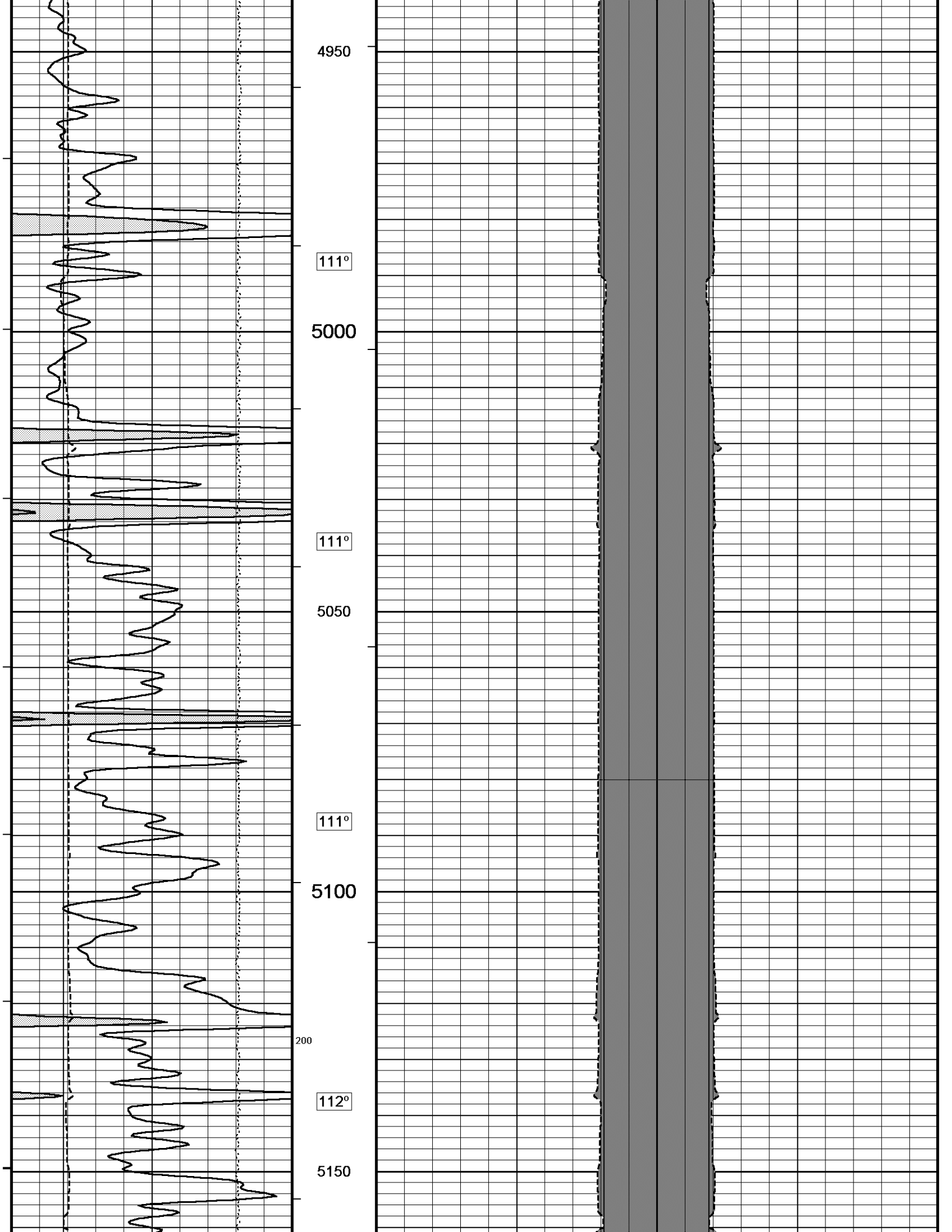


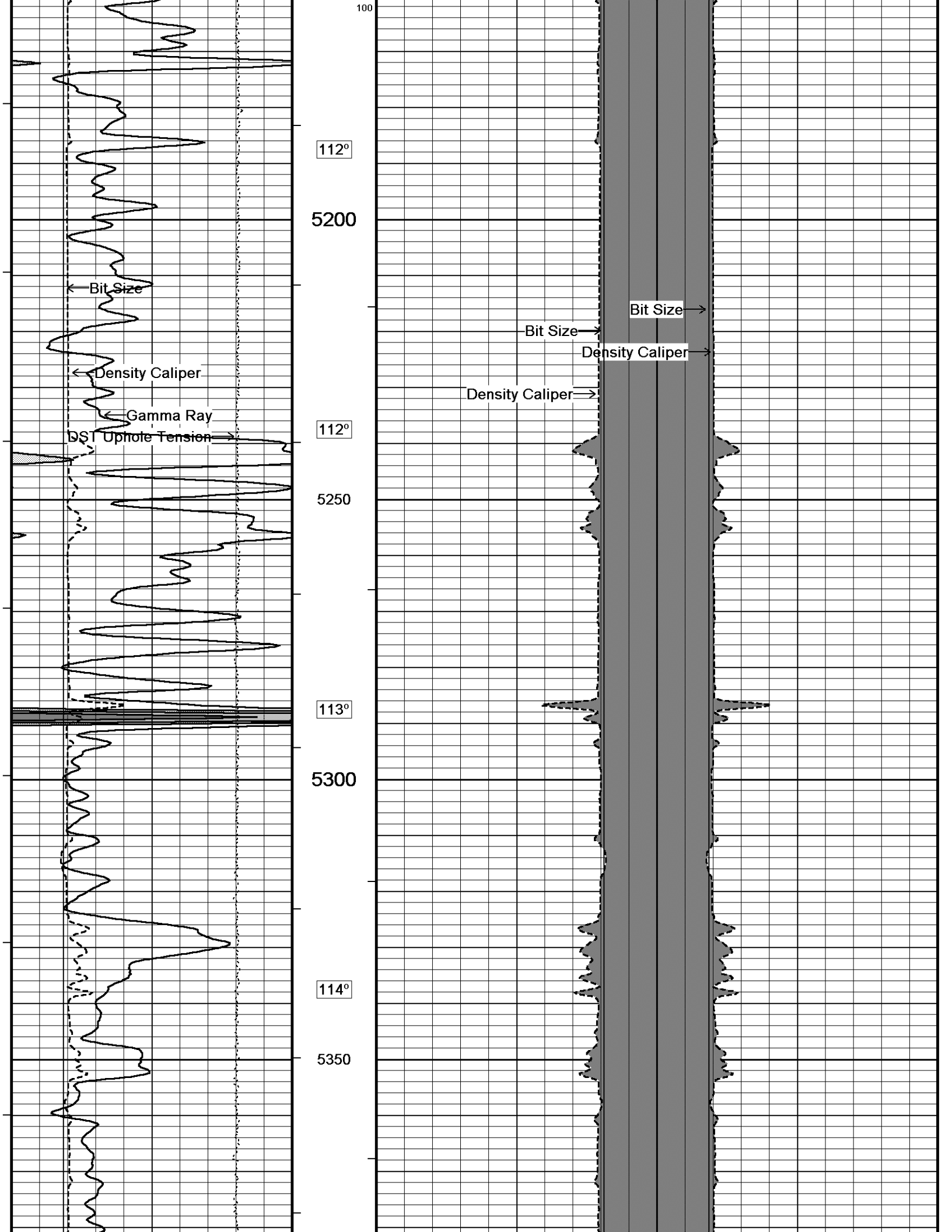


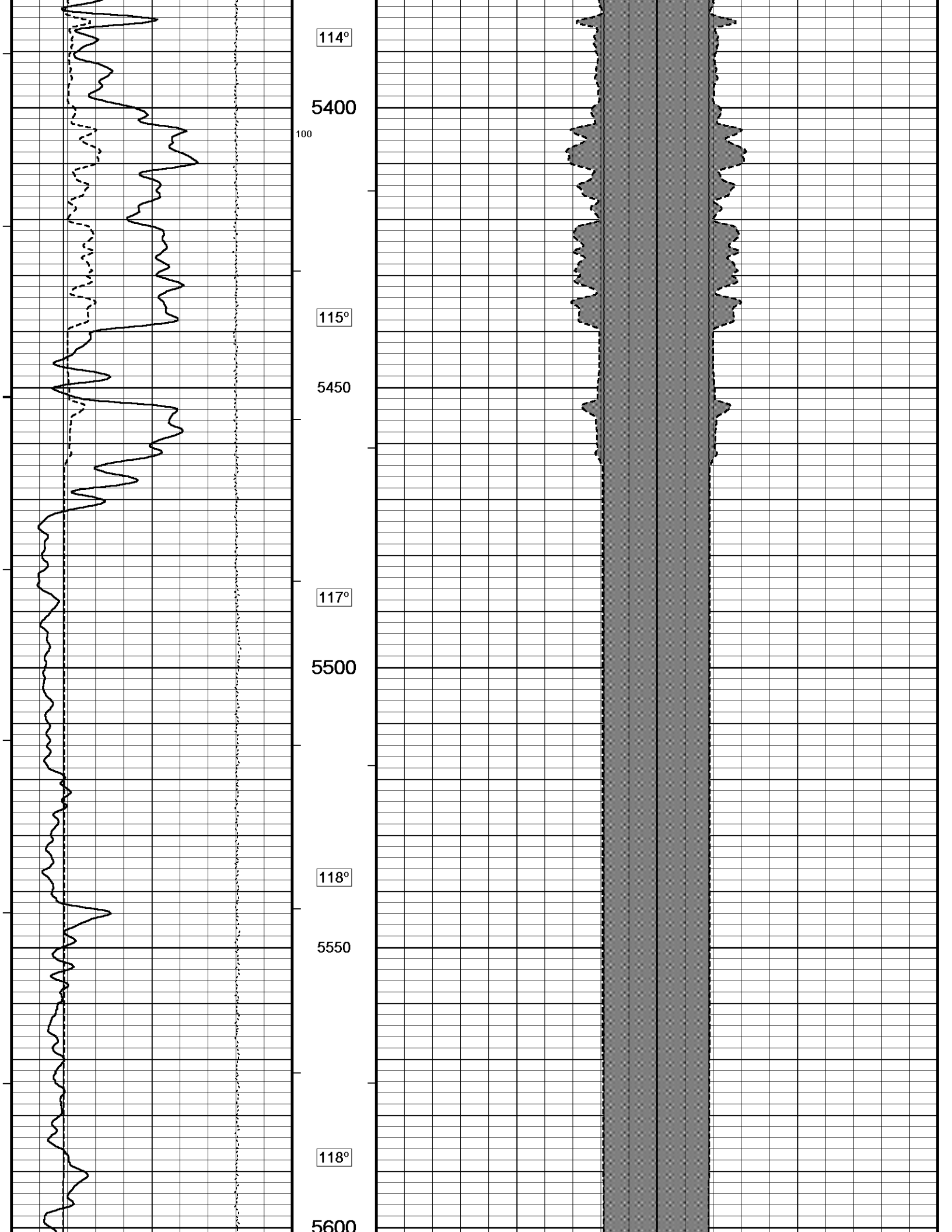


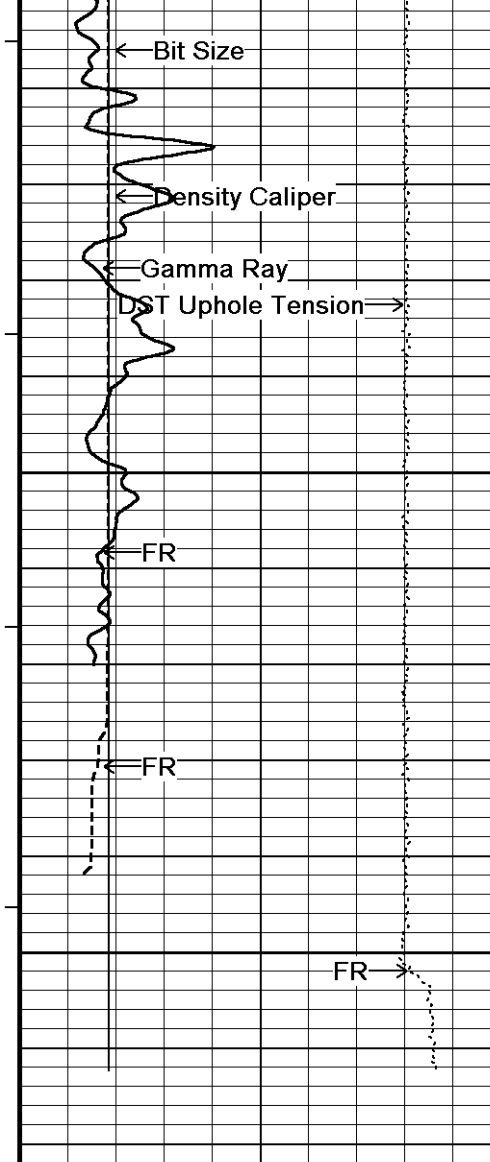












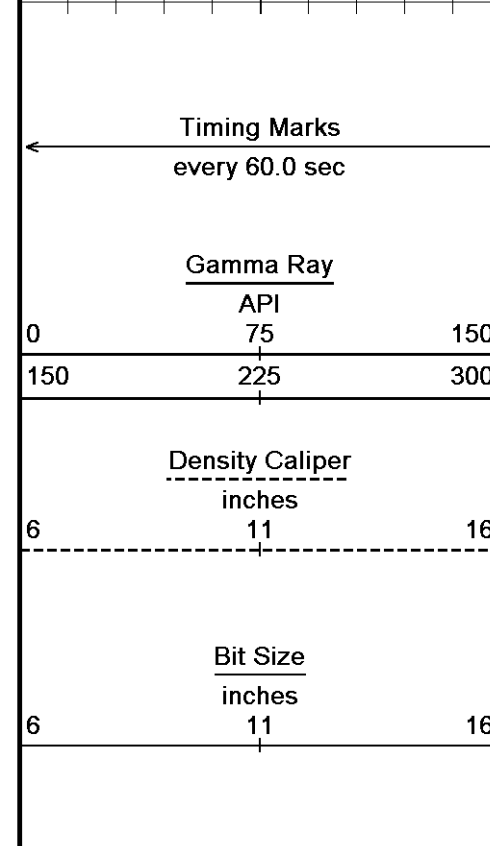
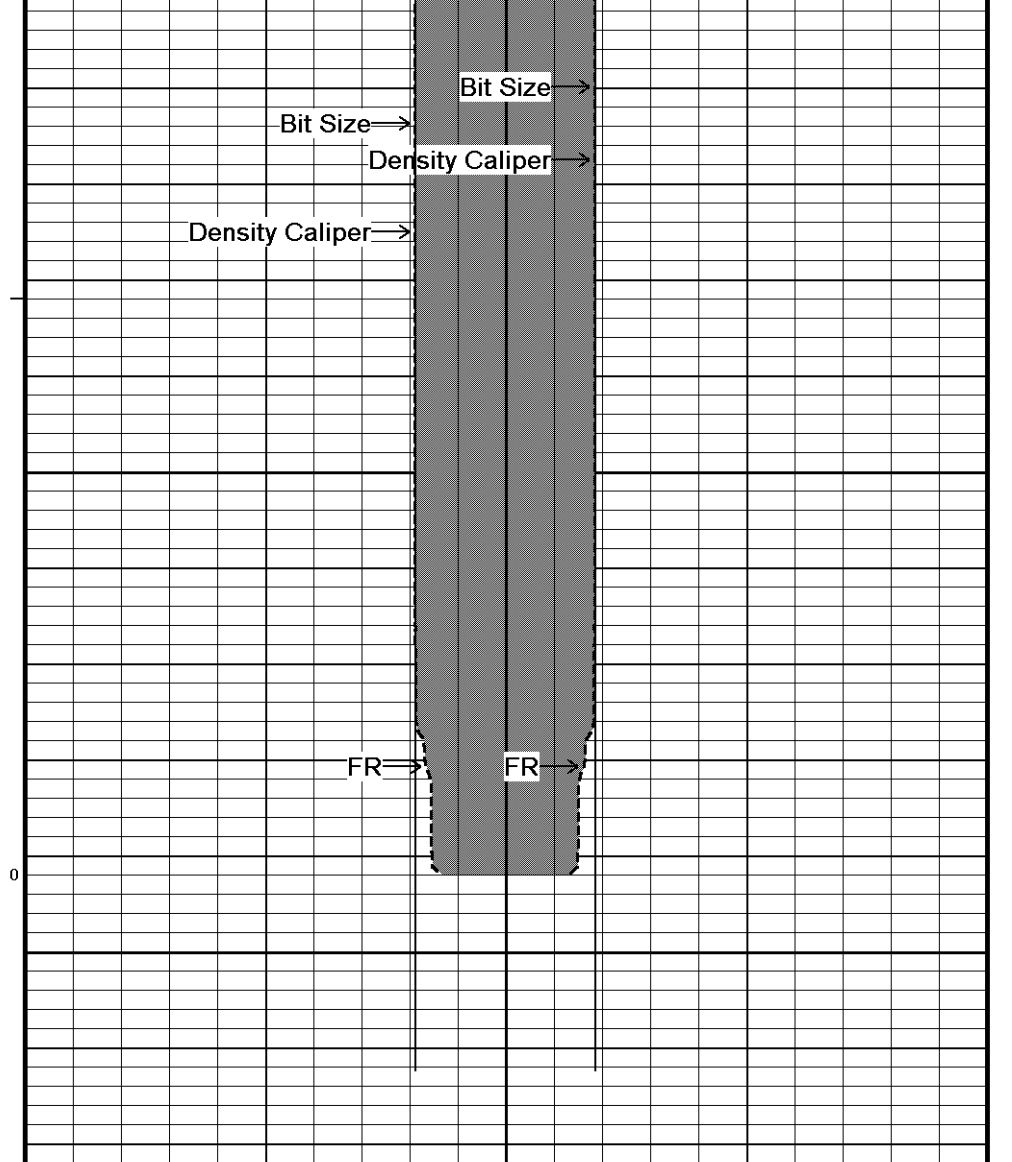
5650

118°

5700

5720

Depth In Feet

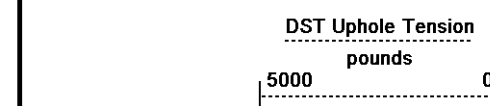
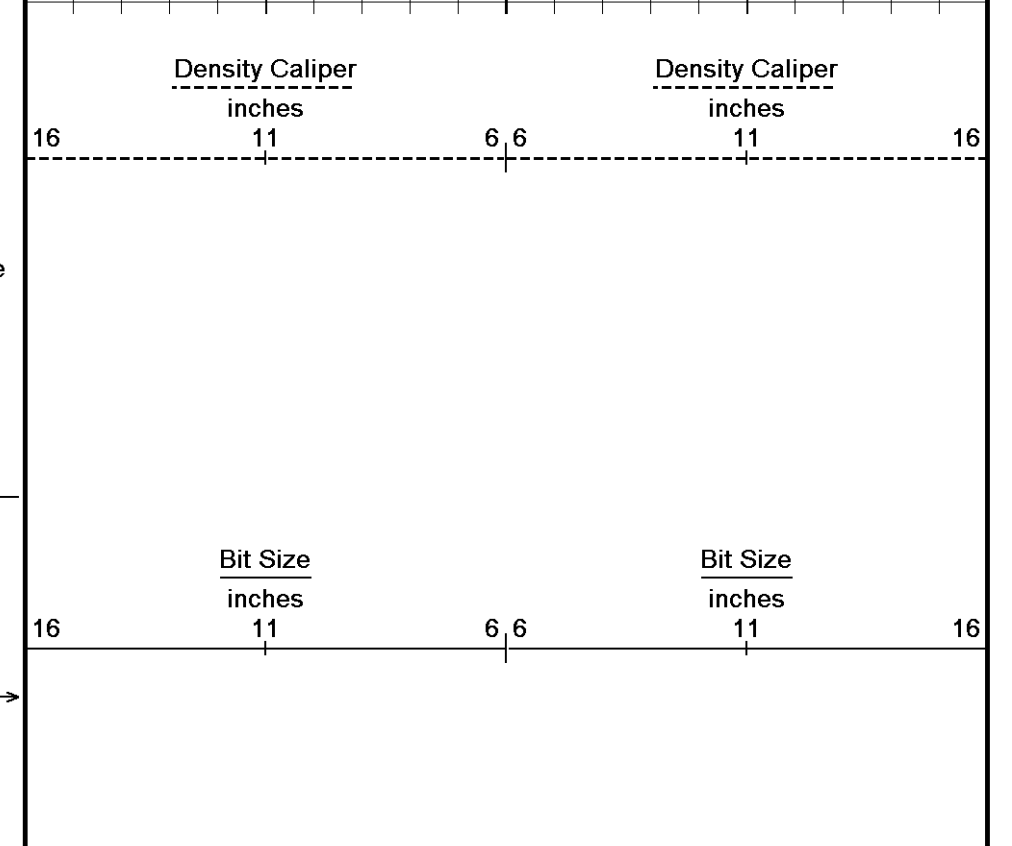


Borehole Temp in deg F

HVI every 10 cu ft

Annular Integral every 10 cu ft

Replay Scale 1:240



5000

0

**5 INCH CALIPER LOG**

**DOWNHOLE EQUIPMENT**

C:\Minimus 13.05.9583\Logs\MCCOY UMCC A 1-17\MCCOY UMCC A 1-17 REPEAT3.dta

CBH-C, Cablehead, 11 pin  
 CBH-CA 170 LG: 2.40 ft WT: 24.3 lb OD: 2.24 in

Compact Comms Gamma  
 MCG-D.K 443 LG: 8.70 ft WT: 63.9 lb OD: 2.24 in

Compact Micro-Resistivity  
 MMR-A 11 LG: 8.59 ft WT: 81.6 lb OD: 4.88 in

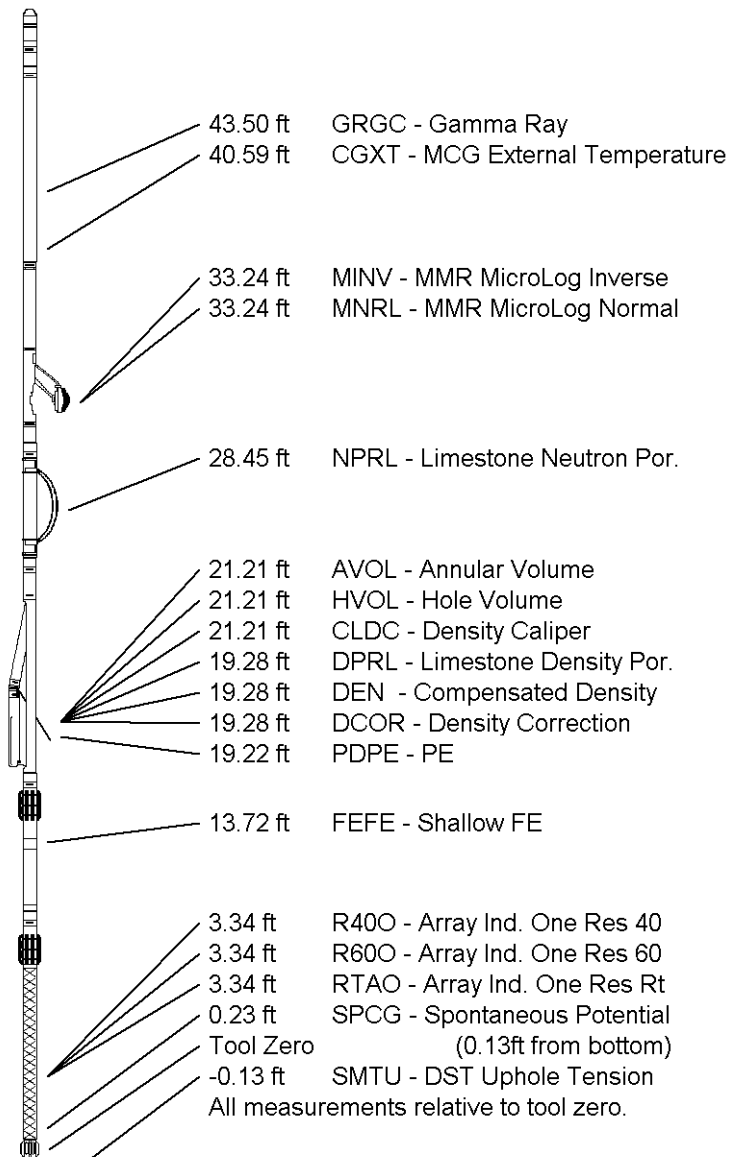
Compact Neutron  
 MDN-A.B 65 LG: 5.04 ft WT: 50.7 lb OD: 2.24 in

Compact Density/Caliper  
 MPD-B 31 LG: 9.59 ft WT: 90.4 lb OD: 2.45 in

Compact Focused Electric  
 MFE-B.J 352 LG: 6.05 ft WT: 48.5 lb OD: 2.24 in

Compact Induction  
 MAI-A.A 45 LG: 10.81 ft WT: 48.5 lb OD: 2.24 in

Total Length: 51.18 ft Weight: 407.9 lb



<b>COMPANY</b>	<b>MCCOY PETROLEUM CORPORATION</b>		
<b>WELL</b>	<b>UMCC A 1-17</b>		
<b>FIELD</b>	<b>WILDCAT</b>		
<b>PROVINCE/COUNTY</b>	<b>MEADE</b>		
<b>COUNTRY/STATE</b>	<b>U.S.A. / KANSAS</b>		

Elevation Kelly Bushing	2827.00	feet	First Reading	5681.00	feet
Elevation Drill Floor	2825.00	feet	Depth Driller	5700.00	feet
Elevation Ground Level	2816.00	feet	Depth Logger	5702.00	feet



