



MIDWEST SURVEYS
 LOGGING - PERFORATING - CONSULTING SERVICES
 P.O. Box 68, Ossawatimie, KS 66064
 913 / 735 - 2128

GAMMA RAY / NEUTRON / CCL

File No. _____

Company **Magnum Exploration Kansas, LLC**

Well **Thrasher No.-1**

Field **Unnamed**

County **Douglas** State **Kansas**

Location **165 FSL & 3665 FEL**

Other Services **SW-SW-SE-SW**

Sec. 25 Type 13s Fge. 20e

Permittal Datum **GL** Elevation **NA**

Log Measured From **GL** K.B. NA

Drilling Measured From **GL** D.F. NA

Date **05-10-2014** Elevation **GL**

Run Number **One**

Depth Logger **899.0**

Bottom Logged Interval **808.0**

Top Log Interval **20.0**

Fluid Level **Full**

Type Fluid **Water**

Salinity - PPM Cl **NA**

Max Recorded Temp **NA**

Equipment No.	Location	107 L	Ossawatimie
Recorded By	Steve Vandsich		
Witnessed By	Bill Wilson		

BOREHOLE RECORD	TO	FROM	SIZE	WGT.	FROM	TO
Run No.	9.875"	0.0	7.00"	14.0 #	0.0	40.0
Two	5.875"	40.0	2.875"	6.5 #	0.0	844.0
			Barite	Set	At	813.0

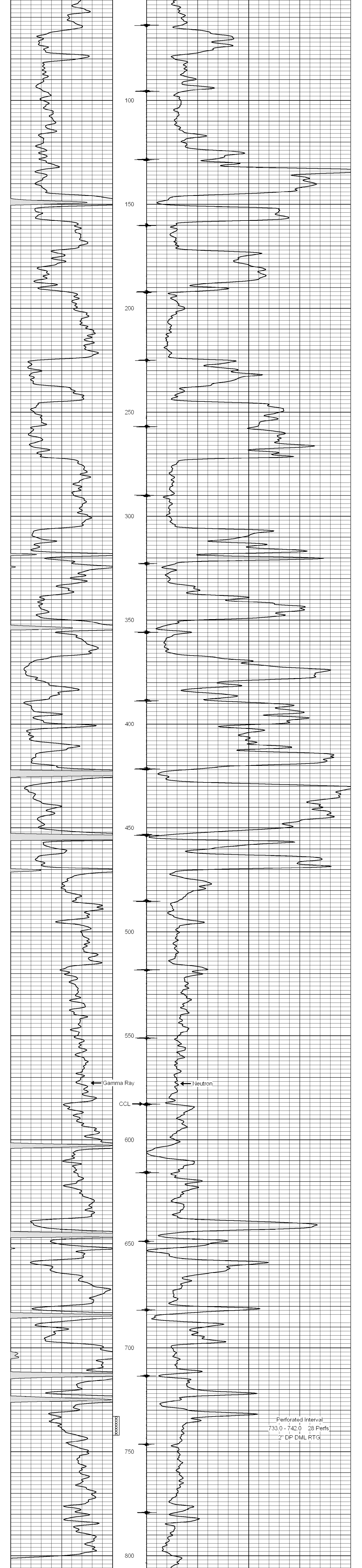
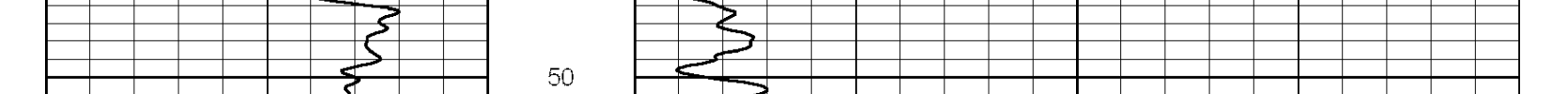
<<< Fold Here >>>

All interpretations are opinions based on inferences from electrical or other measurements and we cannot and do not guarantee the accuracy or correctness of any interpretation, and we shall not, except in the case of gross or willful negligence on our part, be liable or responsible for any loss, costs, damages, or expenses incurred or sustained by anyone resulting from any interpretation made by any of our officers, agents or employees. These interpretations are also subject to our general terms and conditions set out in our current Price Schedule.

Comments

Drilling Contractor :
Hat Drilling Company

Database File: thrasher 1.db
 Dataset Pathname: pass1
 Presentation Format: gr-n-ccl
 Dataset Creation: Sat May 10 08:35:52 2014 by Log SCH 111116
 Charted by: Depth in Feet scaled 1:240



Perforated Interval
733.0 - 742.0 28 Perfs
2" DP DML RTG