



Pioneer Energy Services

Microresistivity Log

15-101-22,489-00-00

API No.

Company **Larson Engineering, Inc**
 Well **Trost #1-31**
 Field **Wildcat**
 County **Lane** State **Kansas**

Location **NW SE NW SE**
1898' FSL & 1783' FEL
 Sec: **31** Twp: **18 S** Rge: **27 W**

Other Services
 CNL/CDL
 DIL

Permanent Datum **Ground Level** Elevation **2720**
 Log Measured From **Kelly Bushing** 7 Ft. Above Perm. Datum
 Drilling Measured From **Kelly Bushing**

Elevation
 K.B. 2727
 D.F. _____
 G.L. 2720

Date	2/5/2014	
Run Number	Two	
Depth Driller	4692	
Depth Logger	4695	
Bottom Logged Interval	4694	
Top Log Interval	3600	
Casing Driller	8.625 @ 277	
Casing Logger	276	
Bit Size	7.875	
Type Fluid in Hole	Chemical	
Salinity, ppm CL	2700	
Density / Viscosity	9.3 55	
pH / Fluid Loss	10.5 7.6	
Source of Sample	Flowline	
Rm @ Meas. Temp	0.4 @ 40	
Rmf @ Meas. Temp	0.3 @ 40	
Rmc @ Meas. Temp	.54 @ 40	
Source of Rmf / Rmc	Charts	
Rm @ BHT	.13 @ 123	
Operating Rig Time	3 1/2 Hours	
Max Rec. Temp. F	123	
Equipment Number	17	
Location	Hays	
Recorded By	T. Martin	
Witnessed By	Vern Schrag	

<<< Fold Here >>>

All interpretations are opinions based on inferences from electrical or other measurements and we cannot and do not guarantee the accuracy or correctness of any interpretation, and we shall not, except in the case of gross or willful negligence on our part, be liable or responsible for any loss, costs, damages, or expenses incurred or sustained by anyone resulting from any interpretation made by any of our officers, agents or employees. These interpretations are also subject to our general terms and conditions set out in our current Price Schedule.

Comments

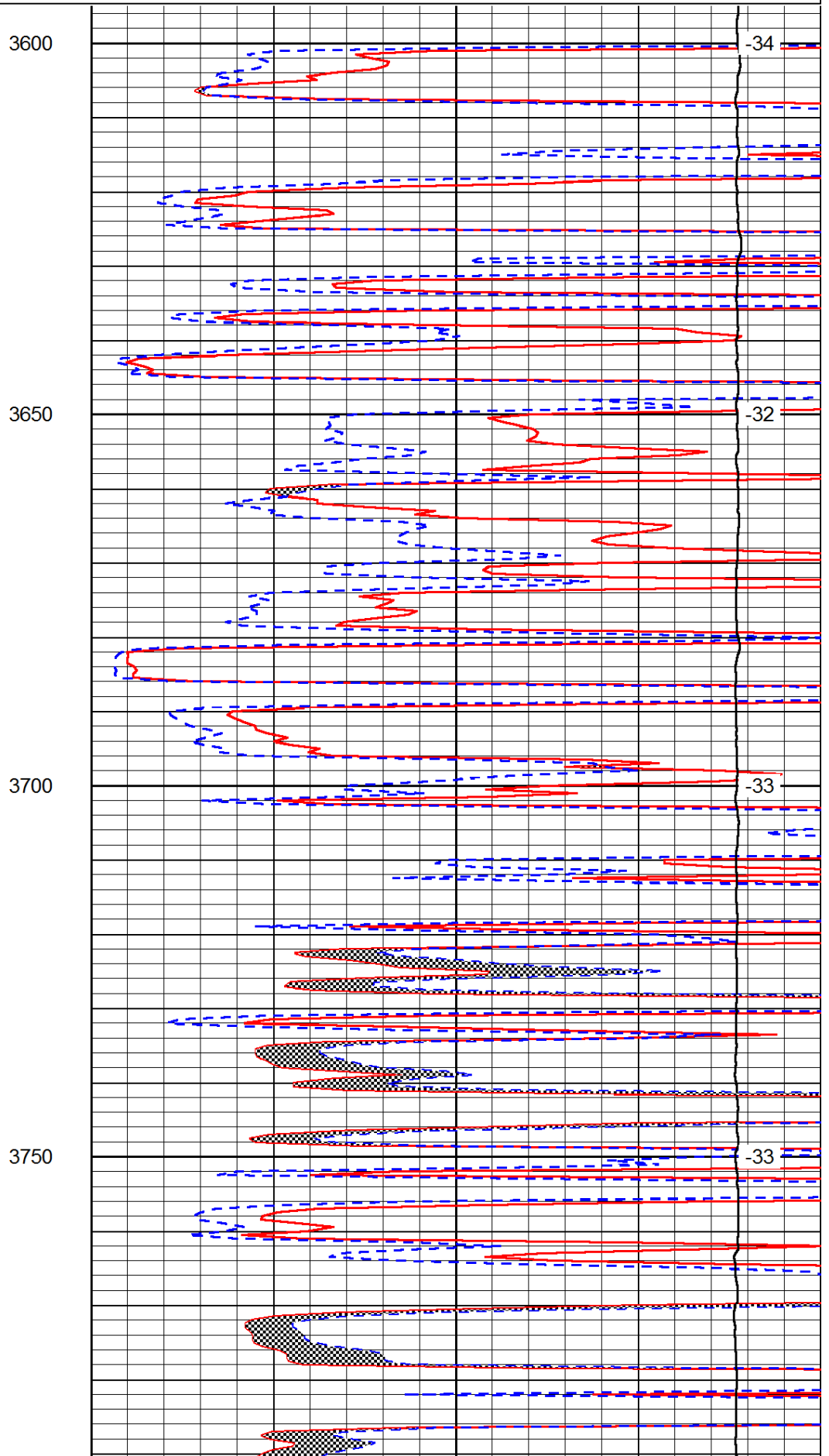
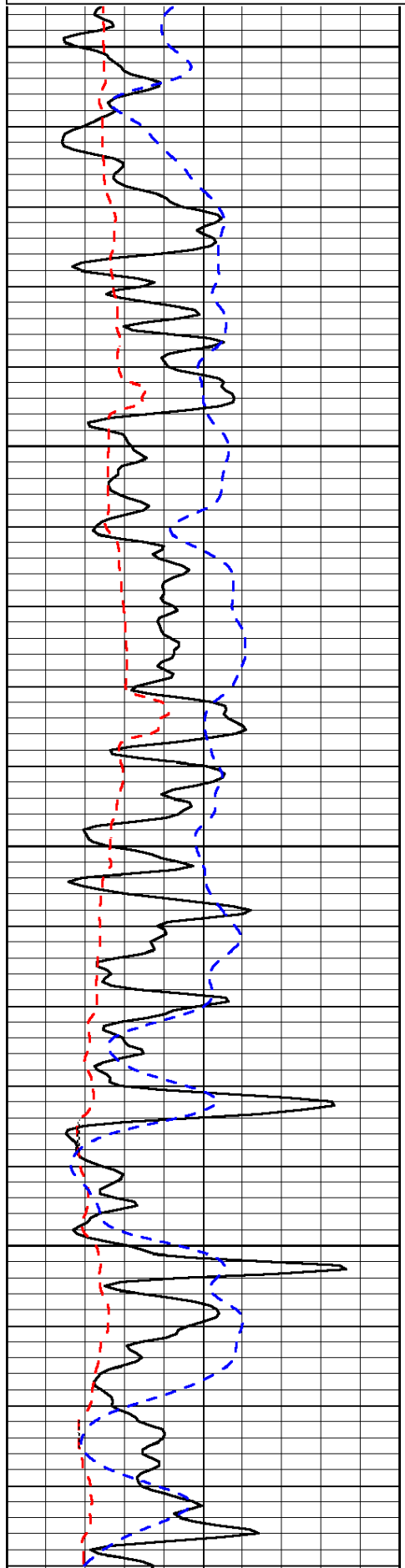
Thank you for using Pioneer Energy Services
 www.pioneerres.com
 785 625 3858
 Dighton, approx. 6 E to Quantum Rd,
 3 S, 1 E, N into

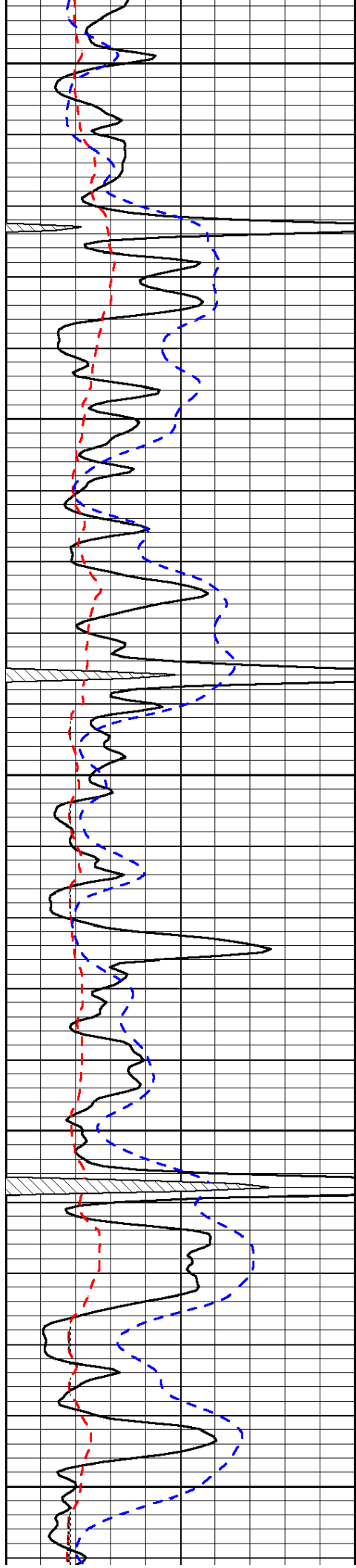
Database File: c:\warrior\data\larson_trost #1-31\lrsnhd.db
 Dataset Pathname: DIL/lrsndt
 Presentation Format: micro
 Dataset Creation: Wed Feb 05 19:55:11 2014
 Charted by: Depth in Feet scaled 1:240

0	Gamma Ray	150
6	Micro Log Caliper (GAPI)	16
-200	SP (mV)	0

0	Micro Inverse 1 X 1	40
0	Micro Normal 2"	40
15000	Line Weight	0

LSPD





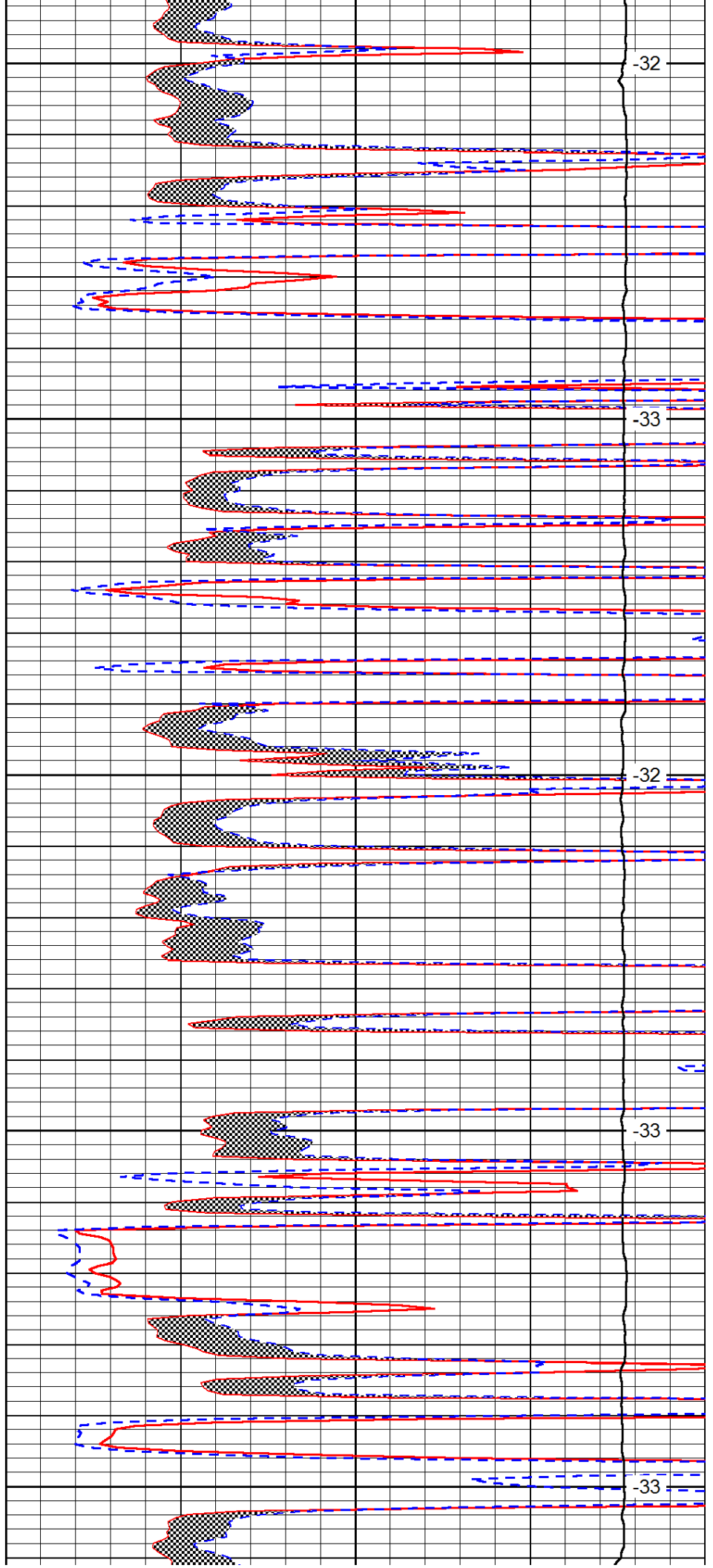
3800

3850

3900

3950

4000



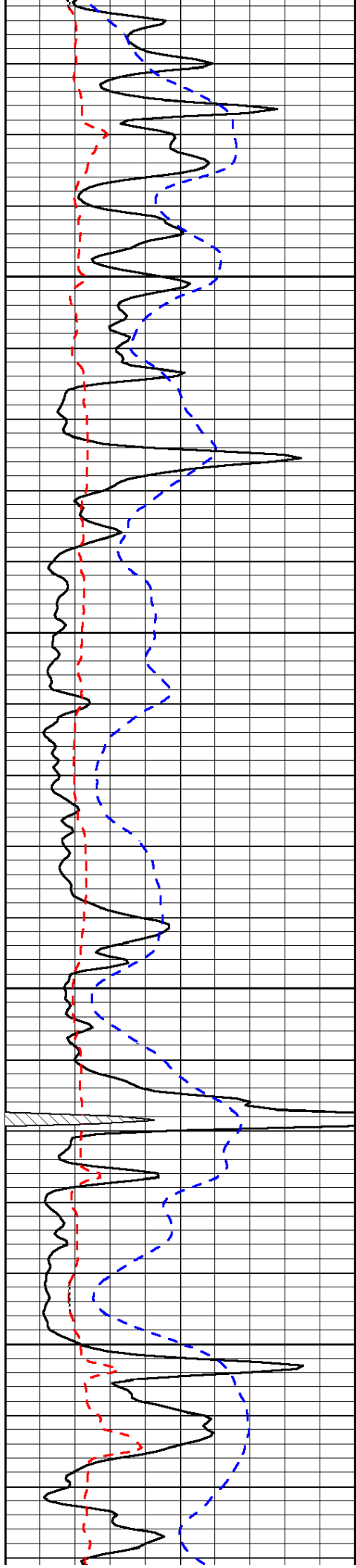
-32

-33

-32

-33

-33

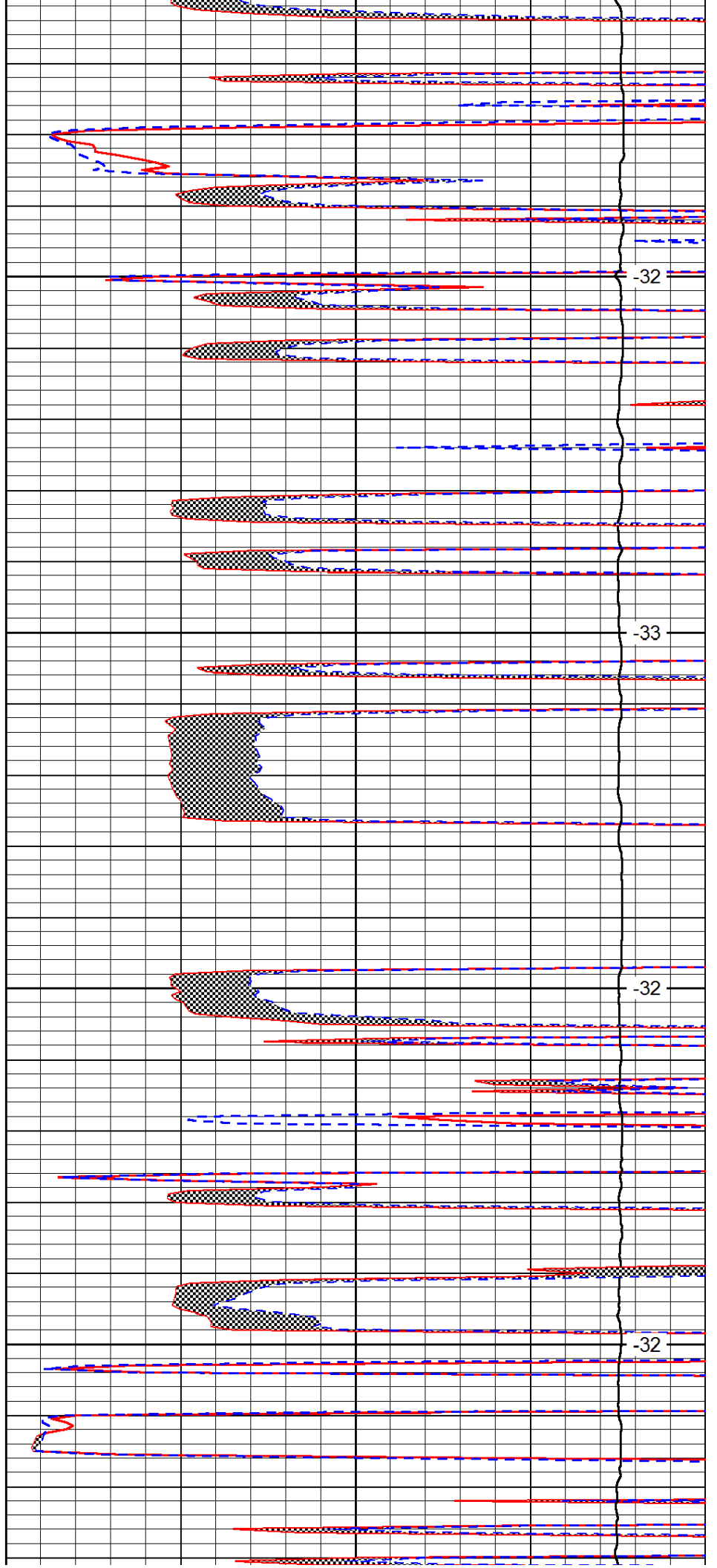


4050

4100

4150

4200

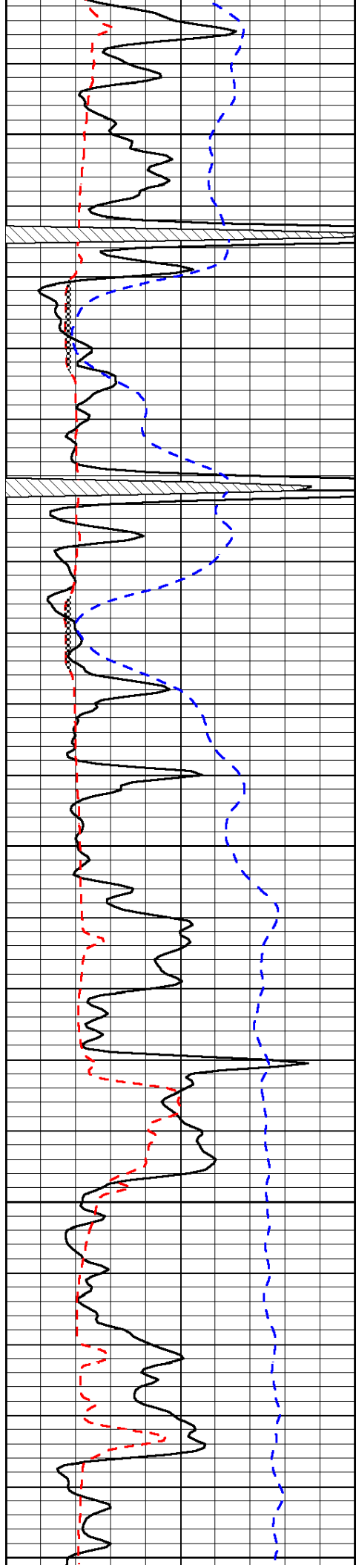


-32

-33

-32

-32



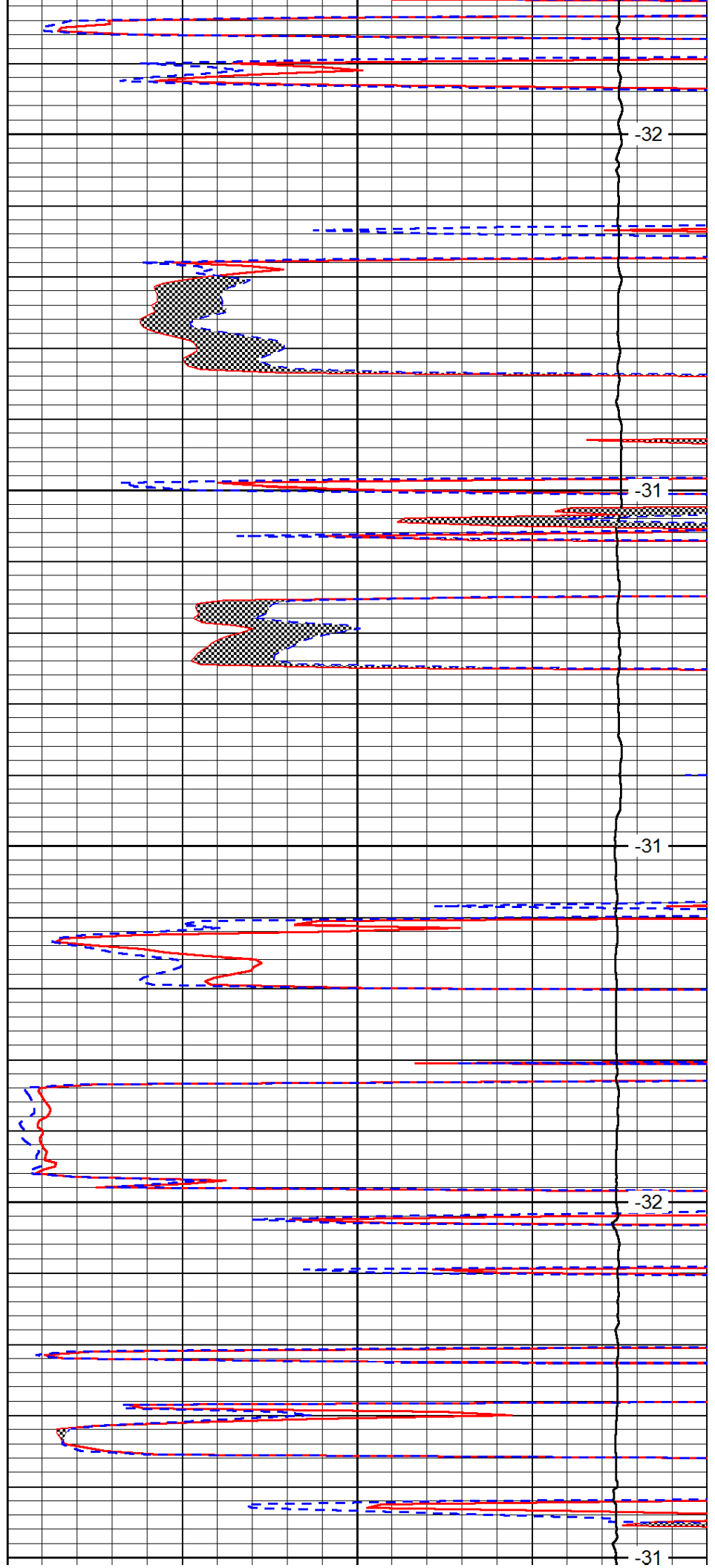
4250

4300

4350

4400

4450



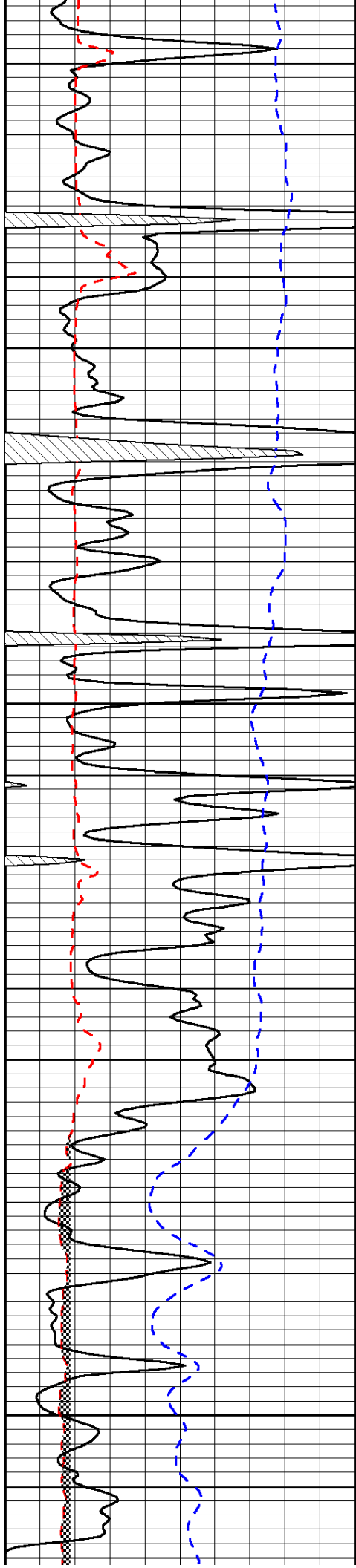
-32

-31

-31

-32

-31

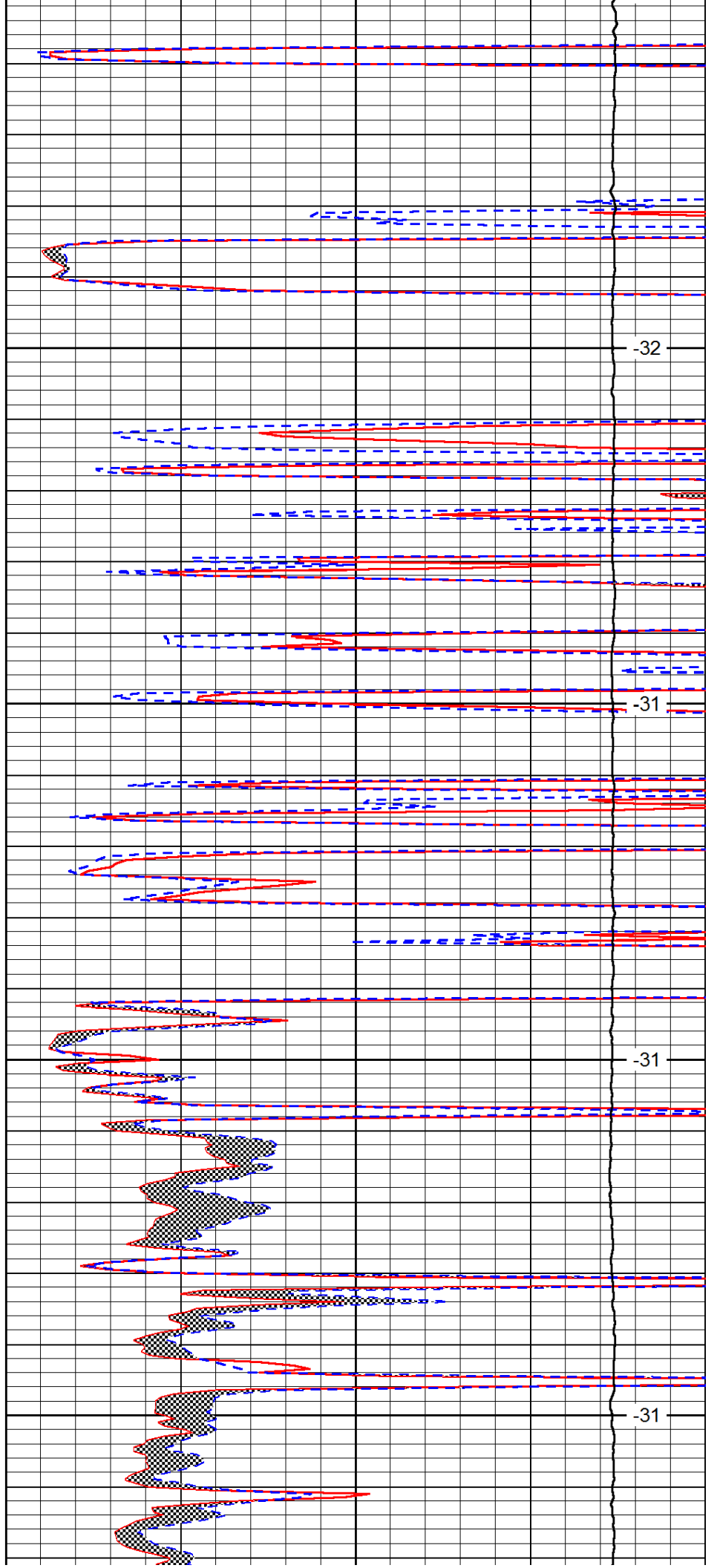


4500

4550

4600

4650

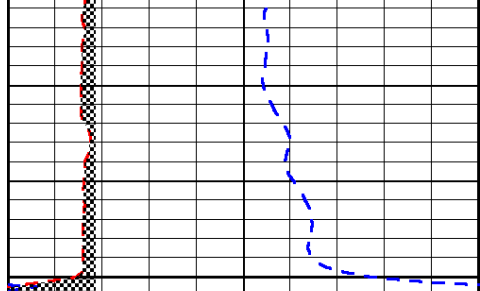


-32

-31

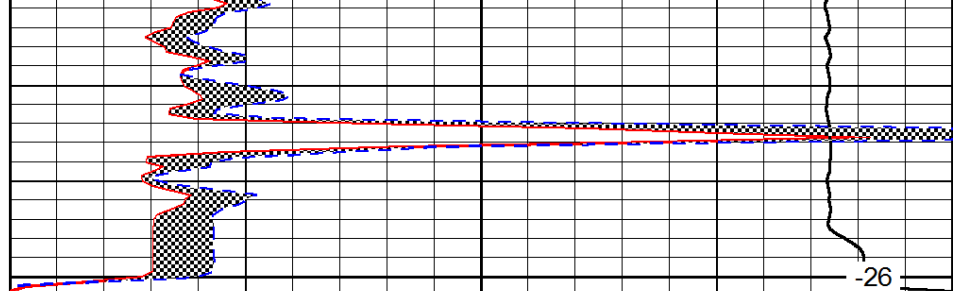
-31

-31



0	Gamma Ray	150
6	Micro Log Caliper (GAPI)	16
-200	SP (mV)	0

4700



0	Micro Inverse 1 X 1	40
0	Micro Normal 2"	40
15000	Line Weight	0

LSPD