



**COMPLETION
& PRODUCTION
SERVICES CO.**

**DUAL INDUCTION
LOG**

Company CASTELLI EXPLORATION, INC.
Well DUNN #1-24
Field SHIMER
County COMANCHE
State KANSAS

Company CASTELLI EXPLORATION, INC.
Well DUNN #1-24
Field SHIMER
County COMANCHE State KANSAS

Location: API # : 15-033-21745-0000
2130' FSL & 585' FEL
SW - NE - NE - SE
SEC 24 TWP 33S RGE 17W
Permanent Datum GROUND LEVEL Elevation 1818
Log Measured From KELLY BUSHING 12' A.G.L.
Drilling Measured From KELLY BUSHING
Other Services
CDL/CNL/PE
MEL
Elevation
K.B. 1830
D.F. 1828
G.L. 1818

Date	1/30/14
Run Number	ONE
Depth Driller	5700
Depth Logger	5684
Bottom Logged Interval	5682
Top Log Interval	00
Casing Driller	13 3/8" @ 312'
Casing Logger	312
Bit Size	7 7/8"
Type Fluid in Hole	CHEMICAL MUD
Density / Viscosity	9.3/4.1
pH / Fluid Loss	9.5/9.2
Source of Sample	FLOWLINE
Rim @ Meas. Temp	.950 @ 60F
Rmf @ Meas. Temp	.713 @ 60F
Rmc @ Meas. Temp	1.14 @ 60F
Source of Rmf / Rmc	MEASUREMENT
Rim @ BHT	.435 @ 131F
Time Circulation Stopped	3 HOURS
Time Logger on Bottom	7:45 P.M.
Maximum Recorded Temperature	131F
Equipment Number	4854
Location	HAYS, KANSAS
Recorded By	JEFF LUEBBERS
Witnessed By	TOM CASTELLI
	RICK POPP

<<< Fold Here >>>

All interpretations are opinions based on inferences from electrical or other measurements and we cannot and do not guarantee the accuracy or correctness of any interpretation, and we shall not, except in the case of gross or willful negligence on our part, be liable or responsible for any loss, costs, damages, or expenses incurred or sustained by anyone resulting from any interpretation made by any of our officers, agents or employees. These interpretations are also subject to our general terms and conditions set out in our current Price Schedule.

Comments

THANK YOU FOR USING "NABORS" HAYS, KANSAS (785) 628-6395
DIRECTIONS
COLDWATER, KS. 9E. ON HWY 160 TO (MM #193)"RD.22", 4S. TO STOP SIGN, 1E. TO "RD.23", 2S. TO (SEVERAL LEASE SIGNS), E. INTO CATTLE GUARD, FOLLOW MAIN TRAIL ANOTHER 3 MILES E. & S.



MAIN SECTION

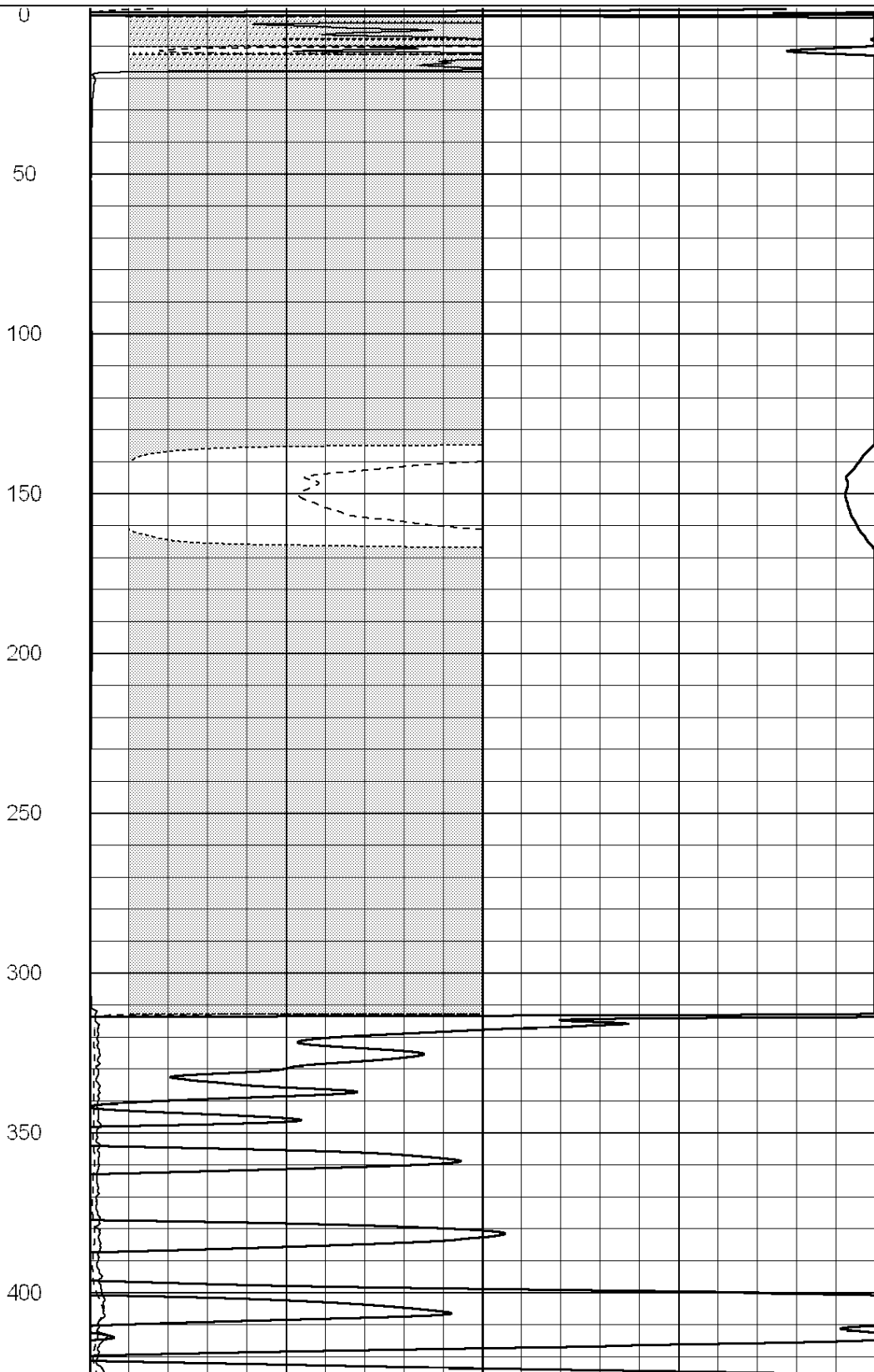
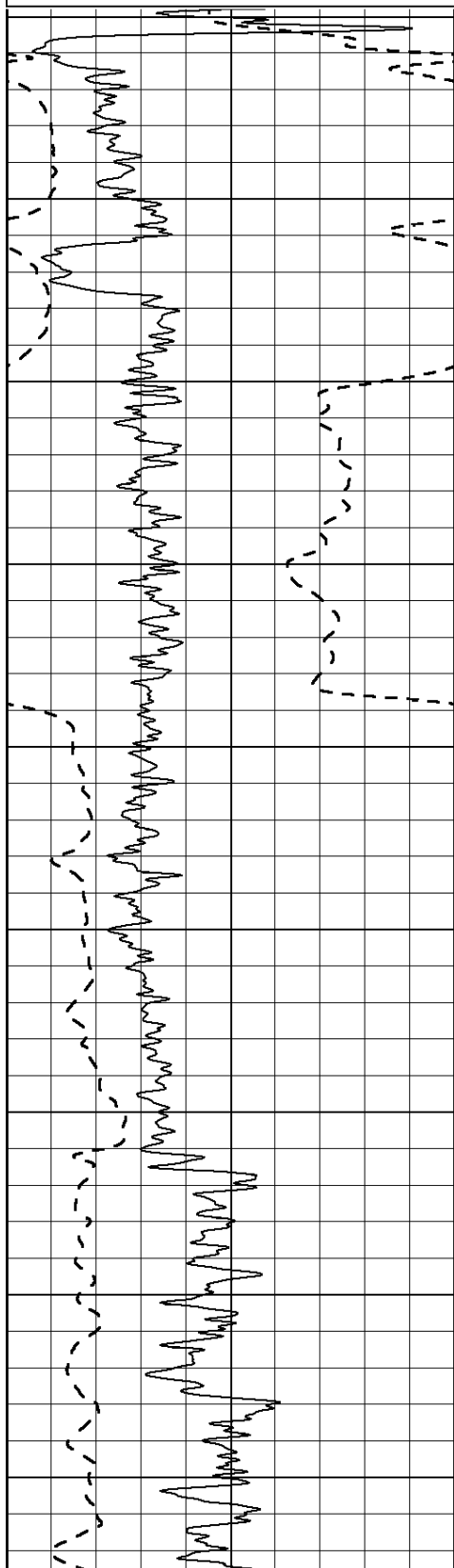
Database File: 22245pe.db
 Dataset Pathname: pass3.5
 Presentation Format: dil2
 Dataset Creation: Wed Jan 29 21:21:55 2014 by Calc SOC 120430
 Charted by: Depth in Feet scaled 1:600

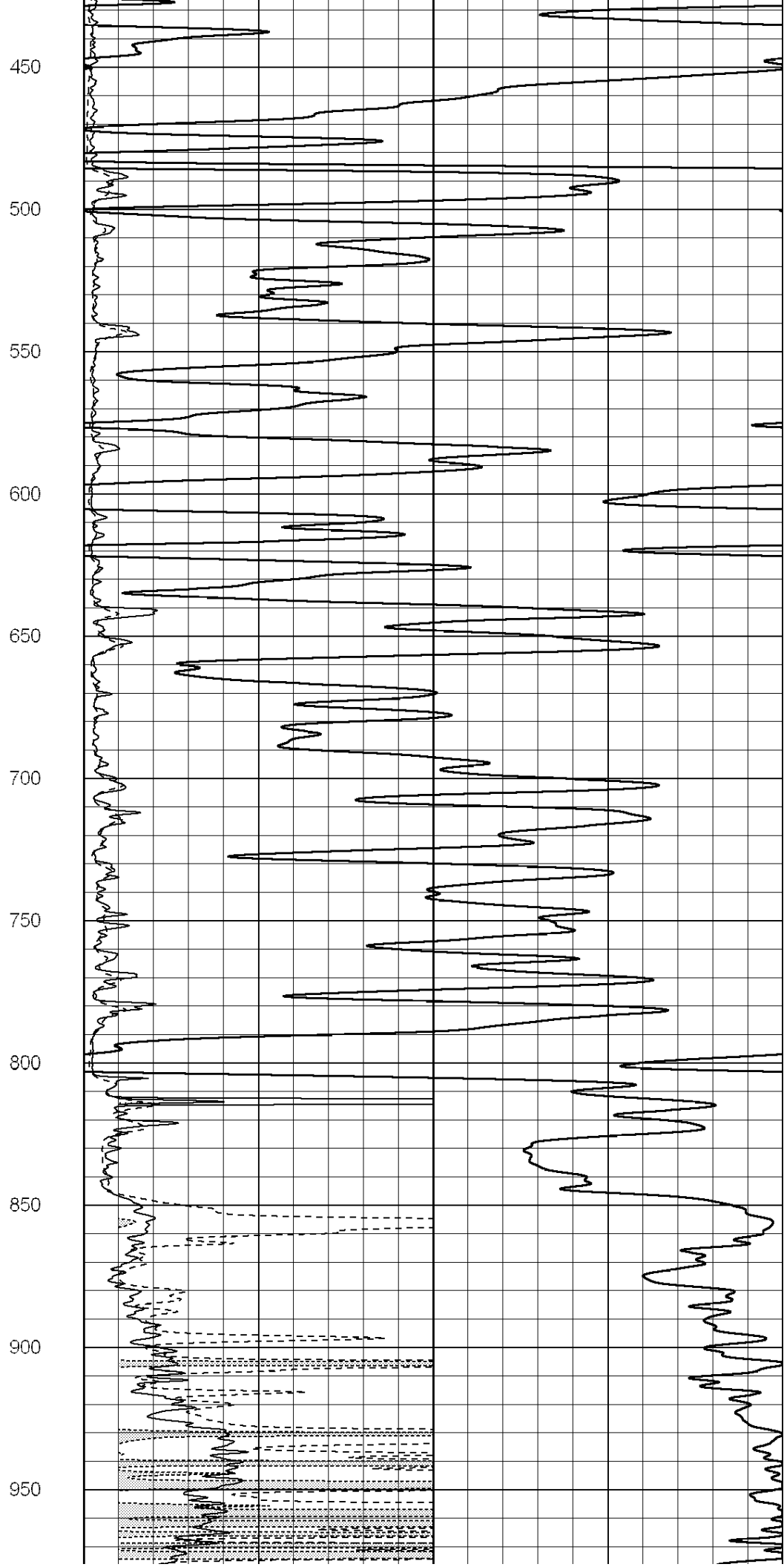
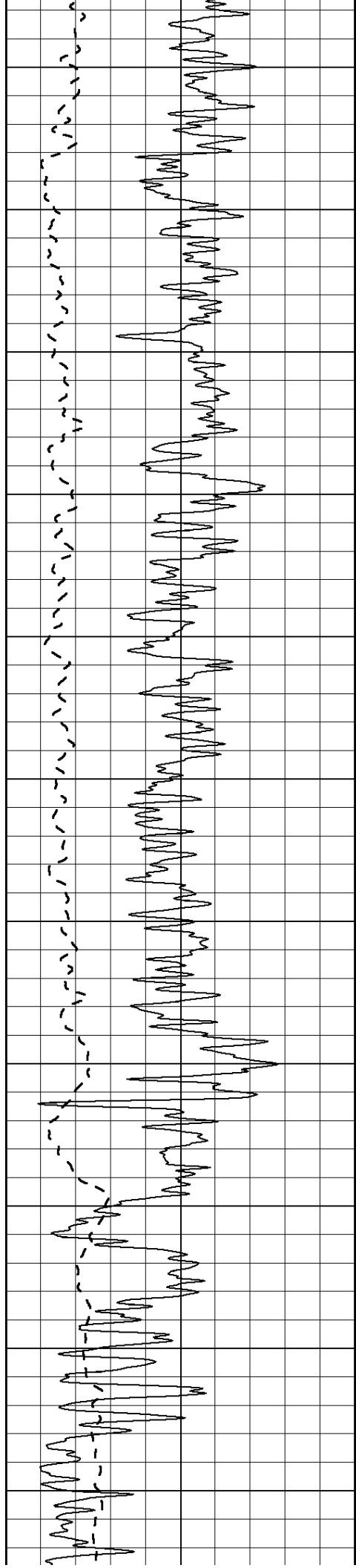
0	Gamma Ray (GAPI)	150
-100	SP (mV)	100

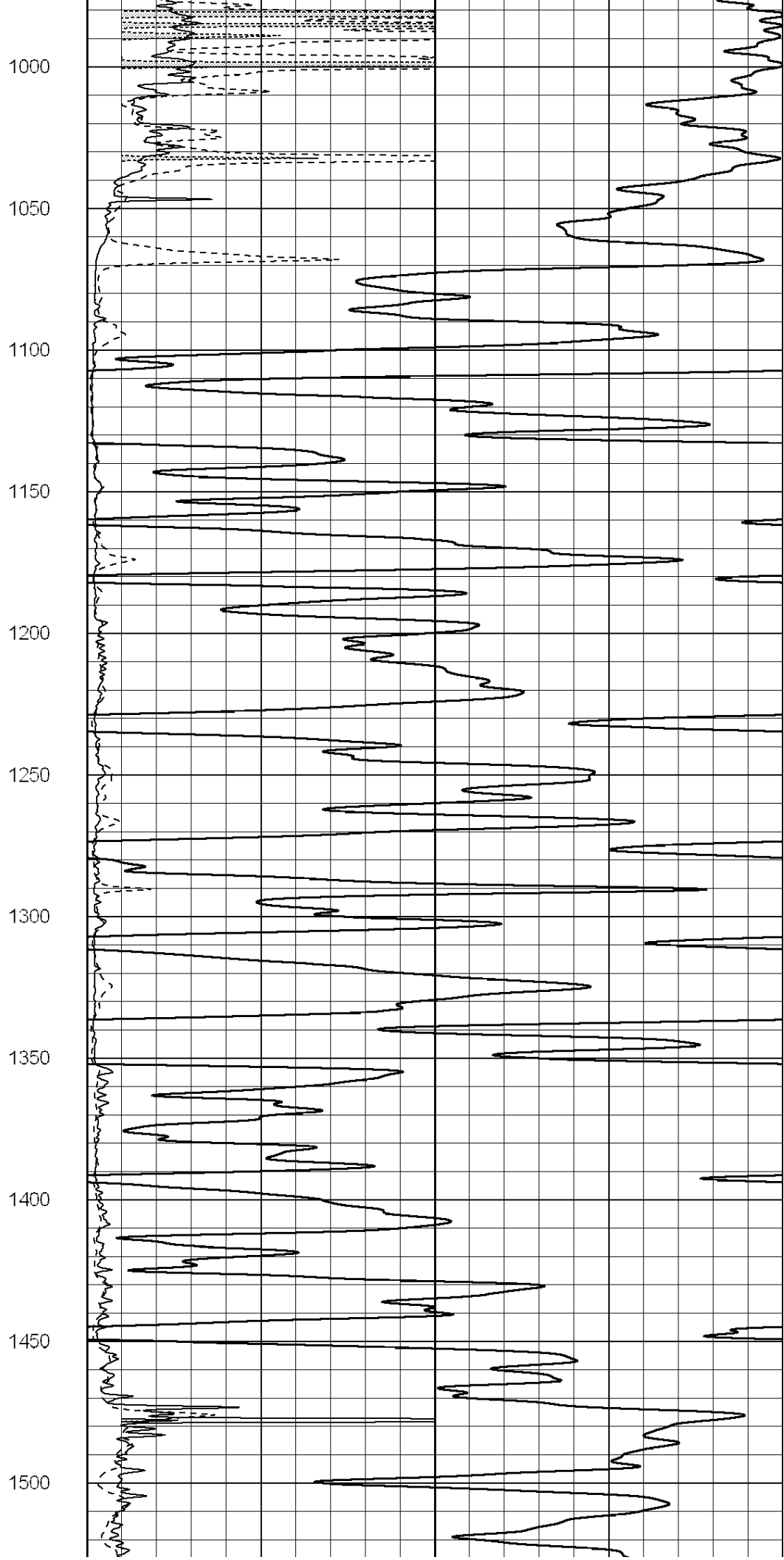
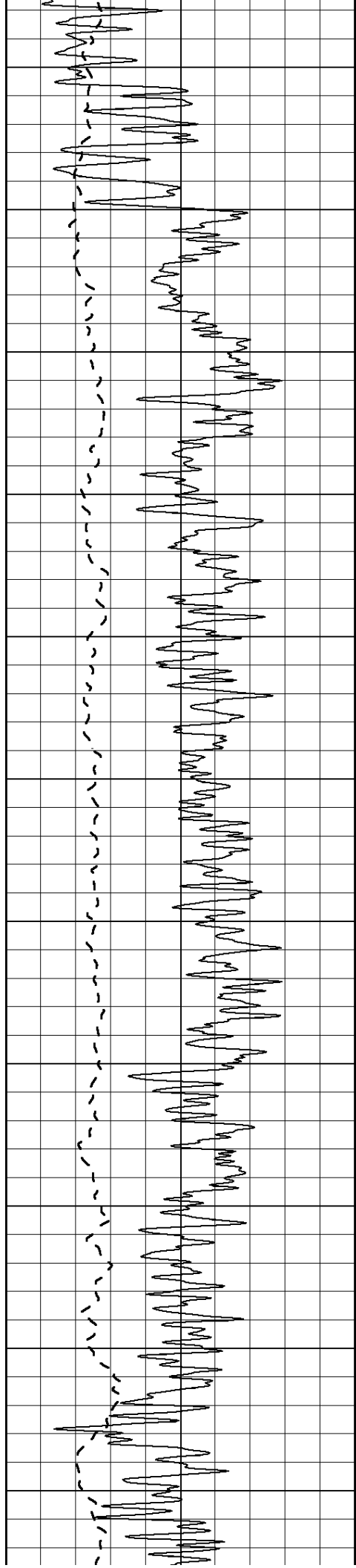
0	RLL3 (Ohm-m)	50
0	RILD (Ohm-m)	50

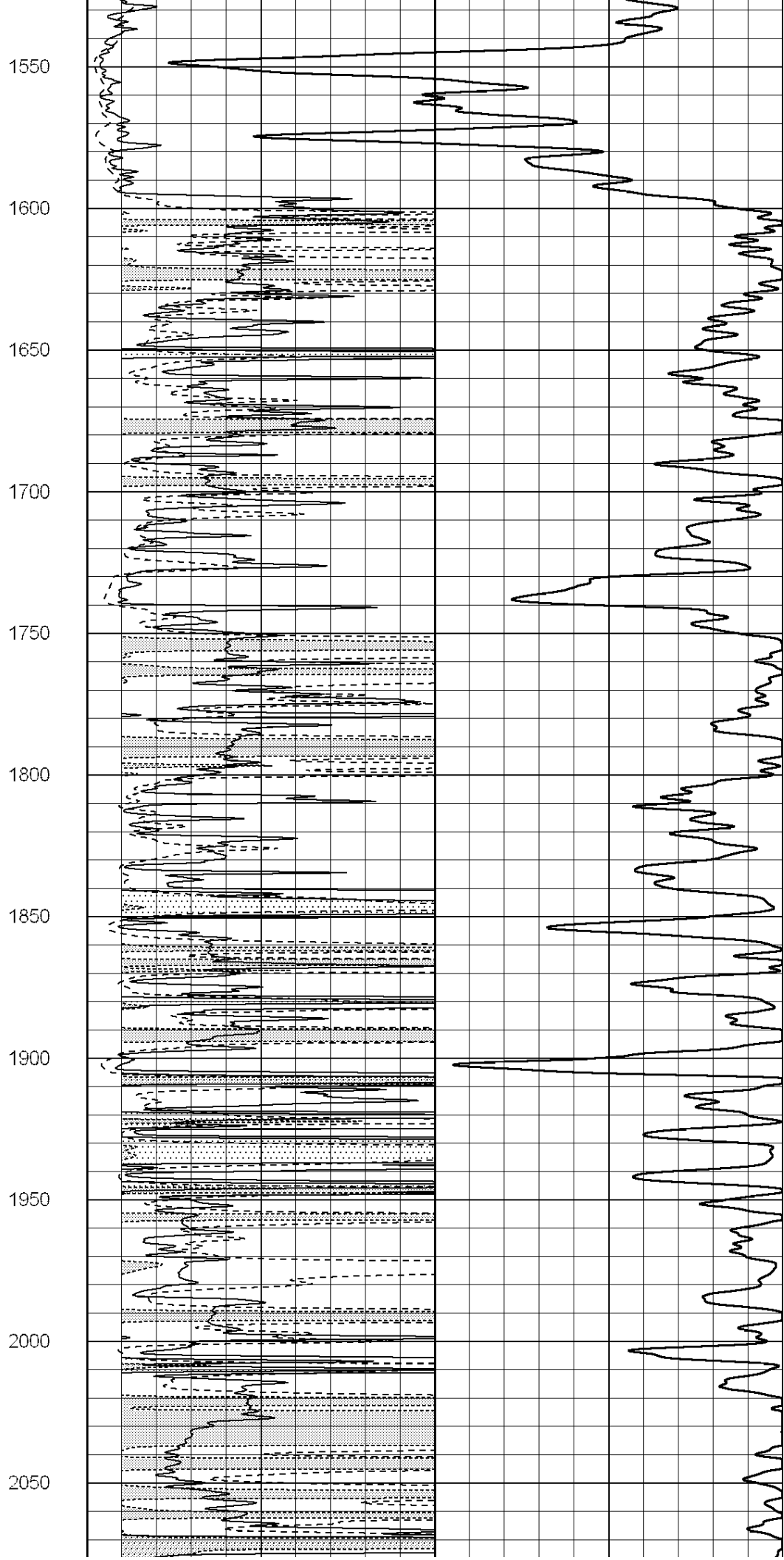
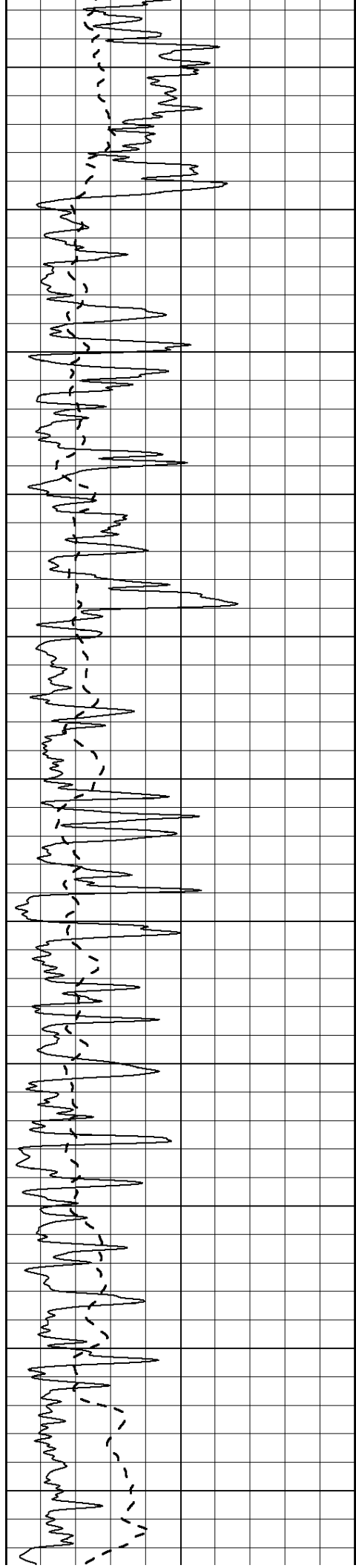
1000	CILD (mmho/m)	0
------	---------------	---

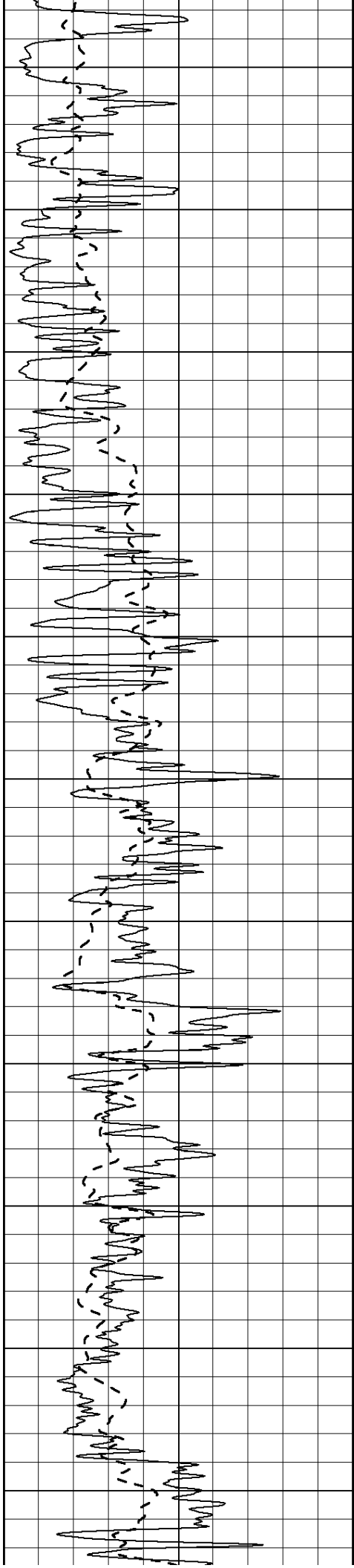
50	RILD X10 (Ohm-m)	500
50	RLL3 X10 (Ohm-m)	500











2100

2150

2200

2250

2300

2350

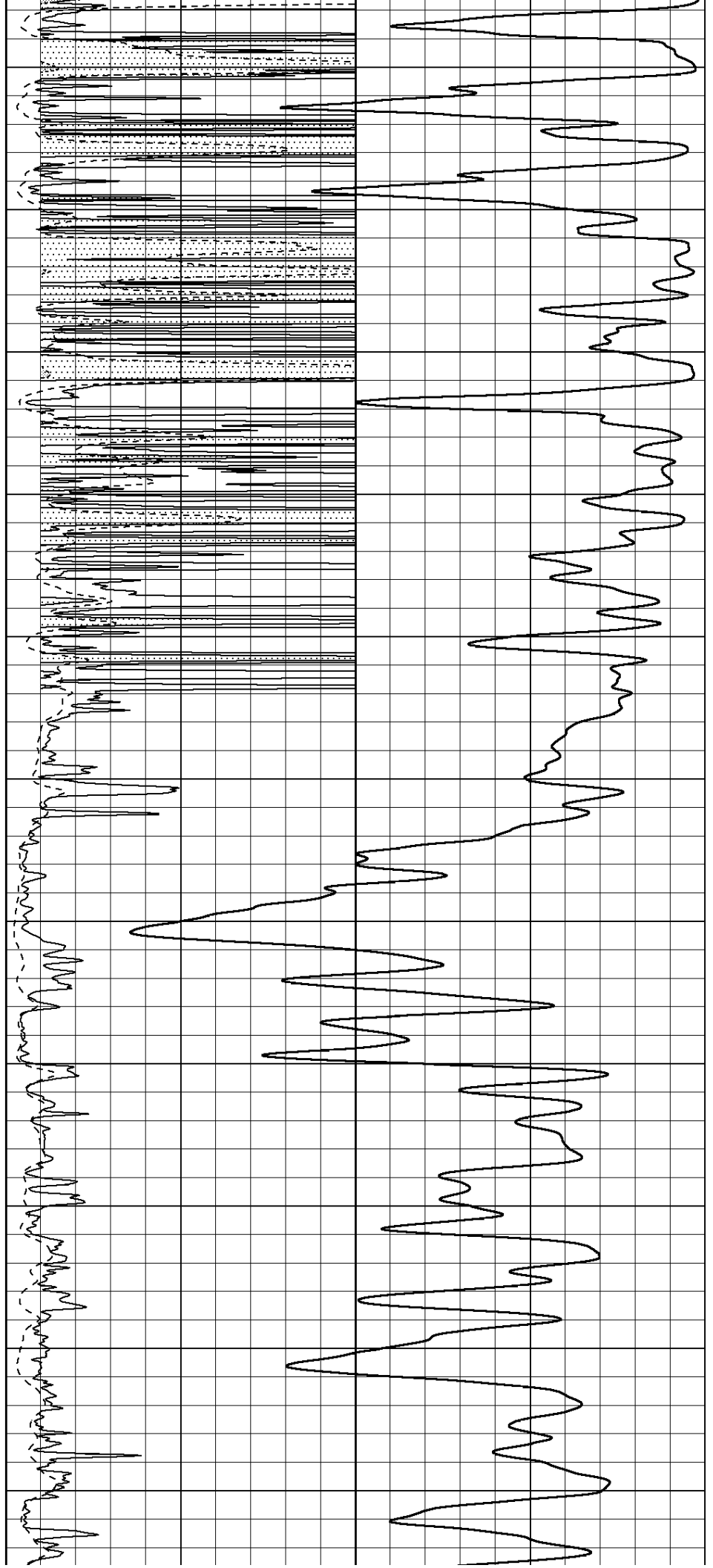
2400

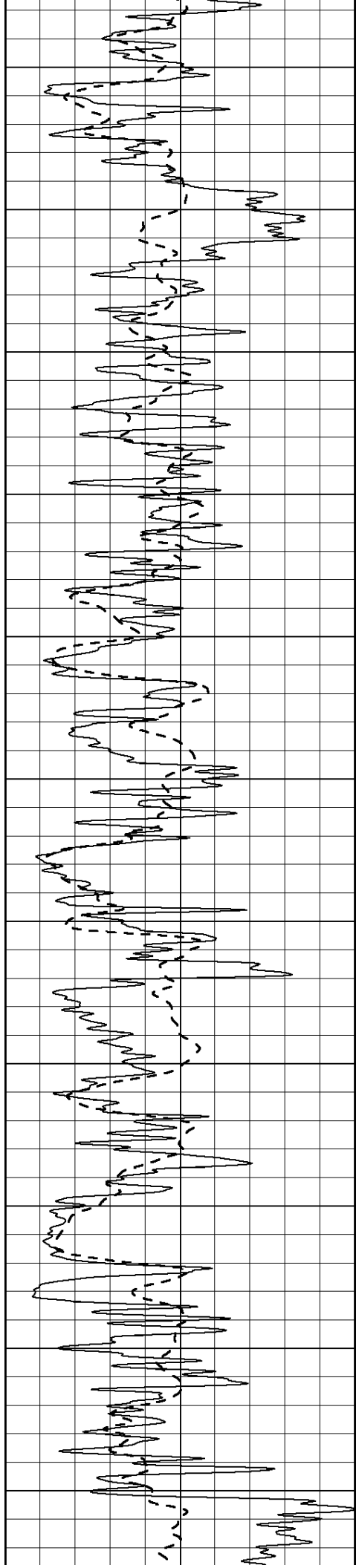
2450

2500

2550

2600





2650

2700

2750

2800

2850

2900

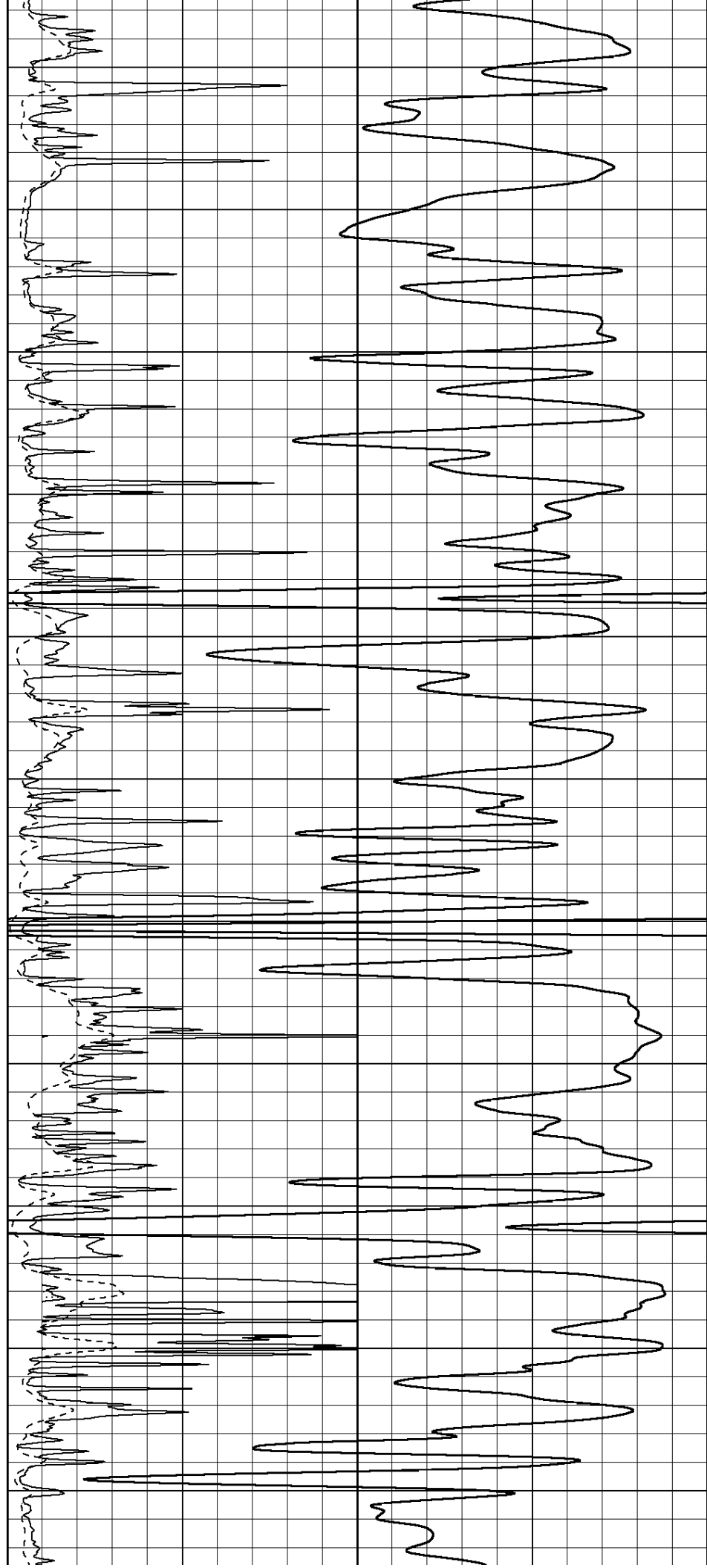
2950

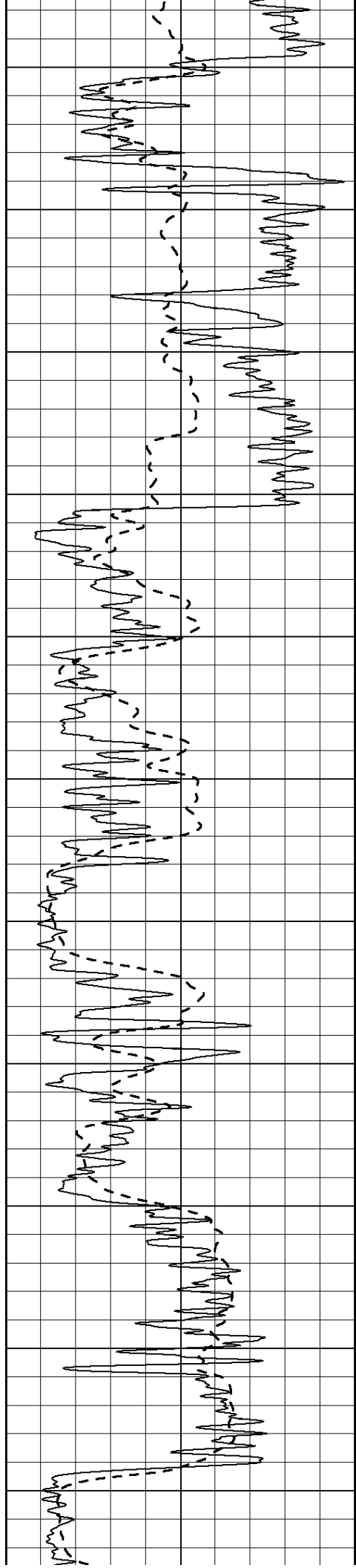
3000

3050

3100

3150





3200

3250

3300

3350

3400

3450

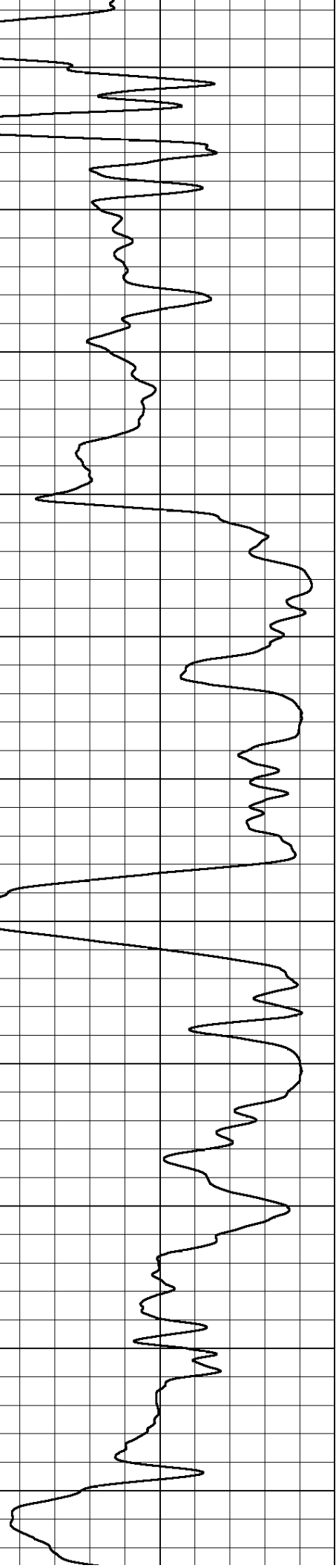
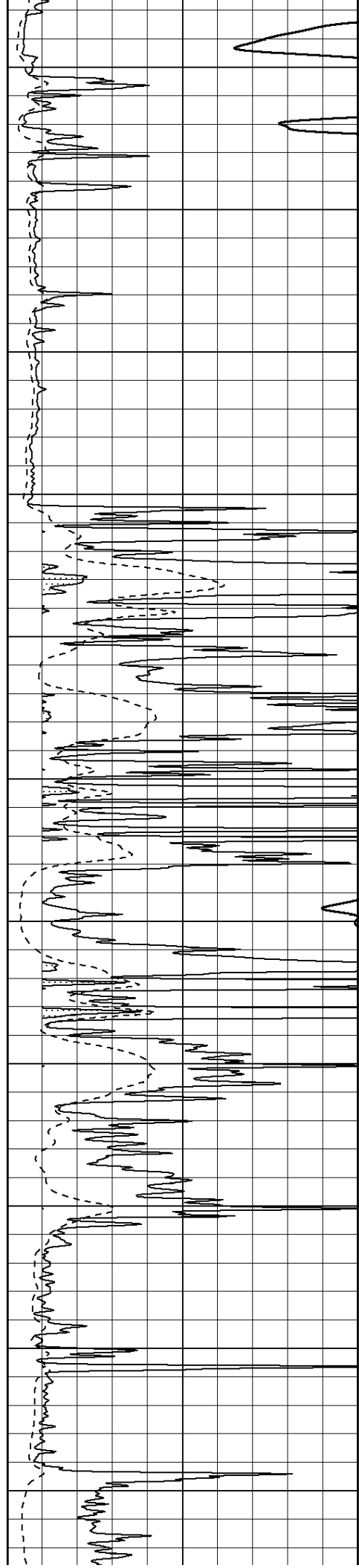
3500

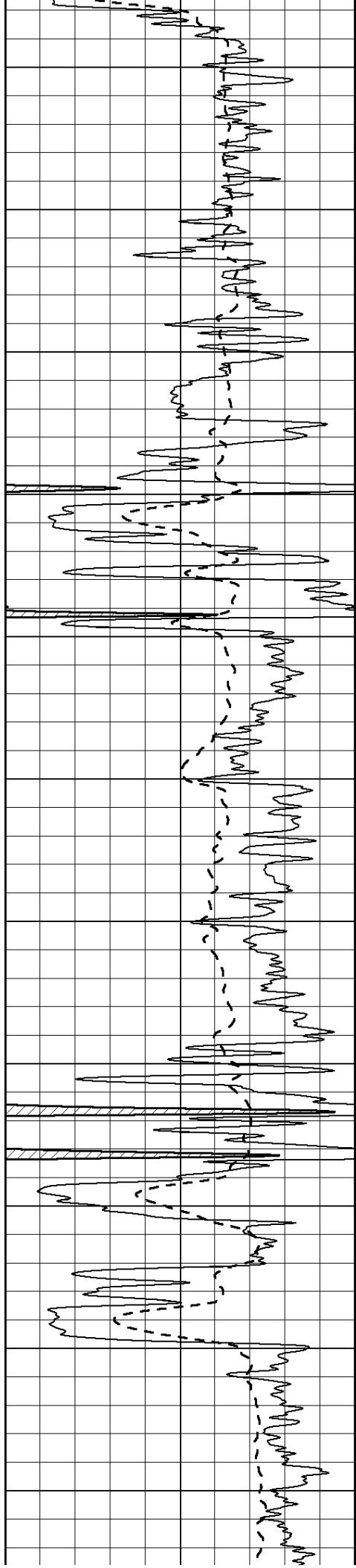
3550

3600

3650

3700





3750

3800

3850

3900

3950

4000

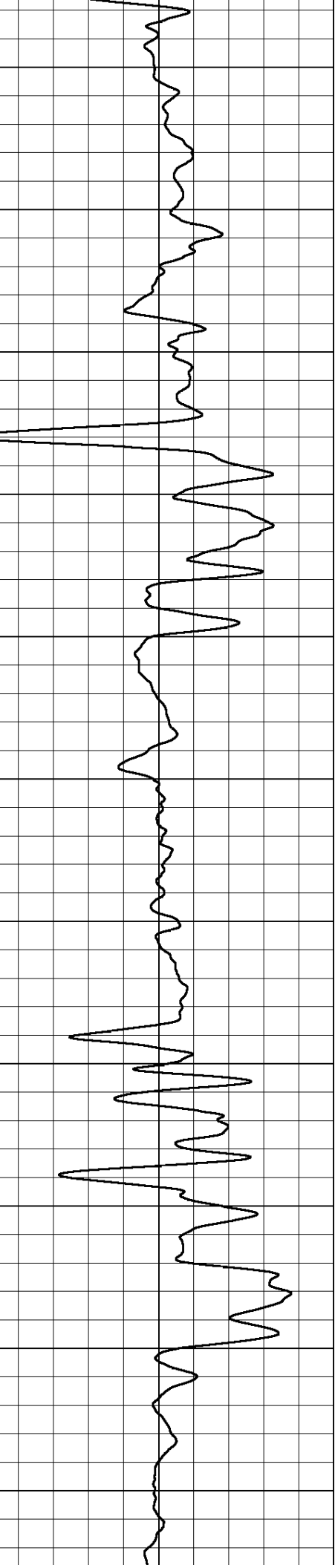
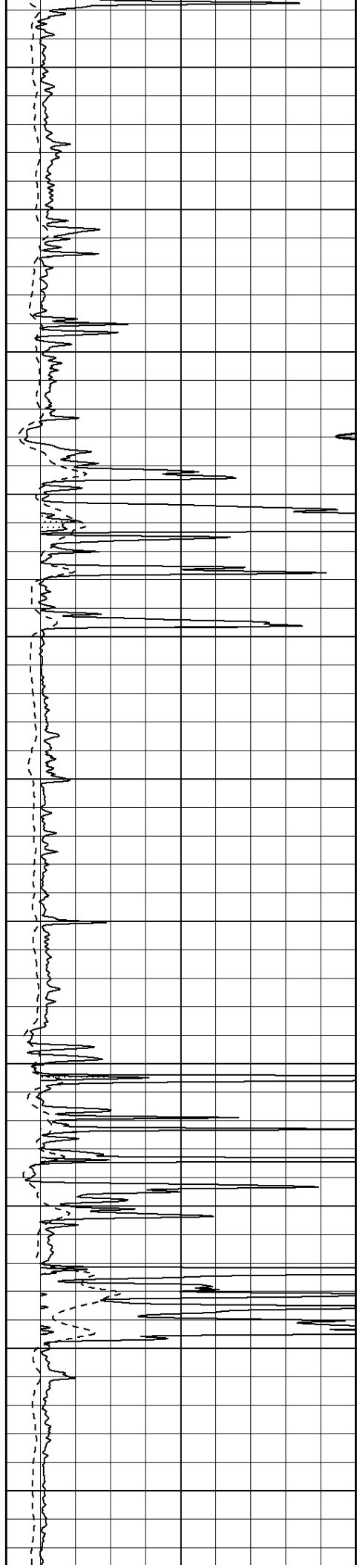
4050

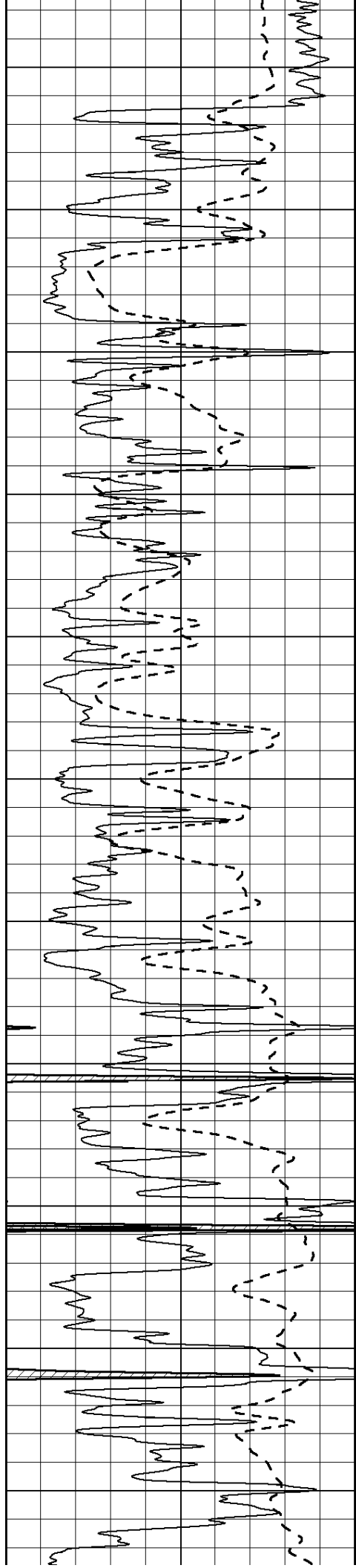
4100

4150

4200

4250





4300

4350

4400

4450

4500

4550

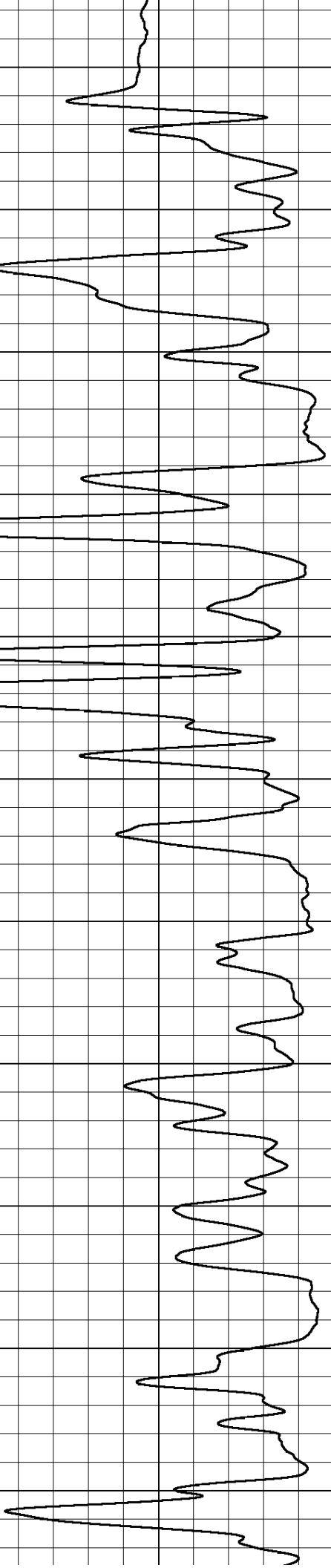
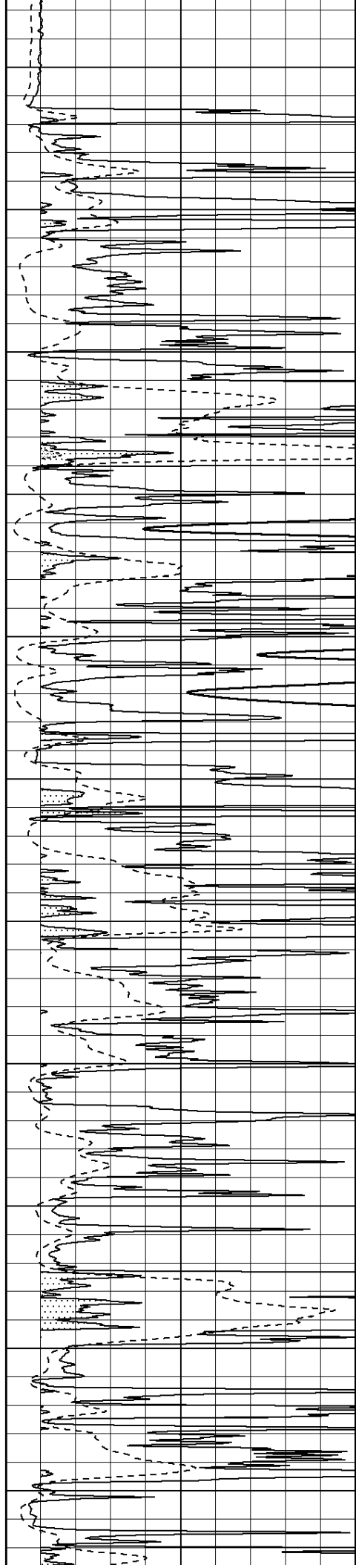
4600

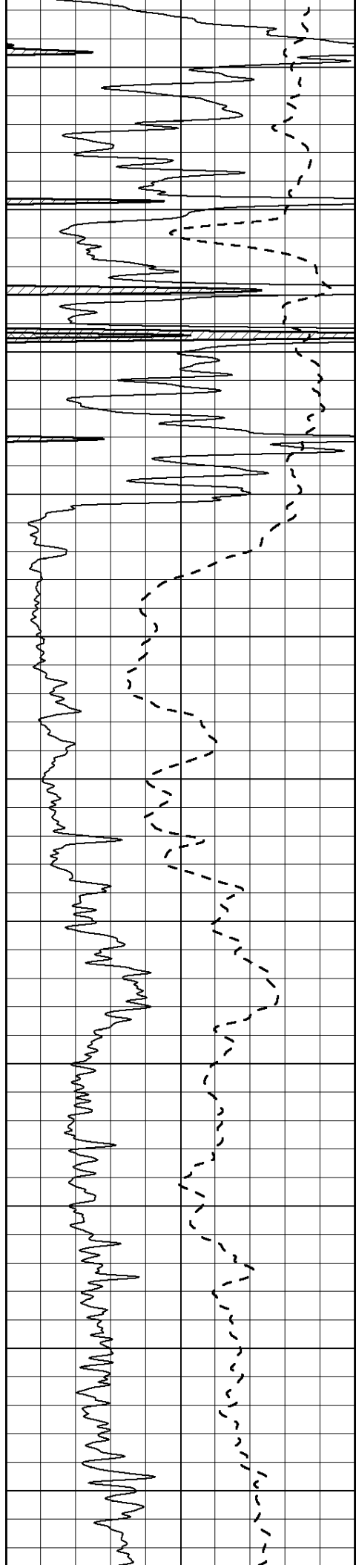
4650

4700

4750

4800





4850

4900

4950

5000

5050

5100

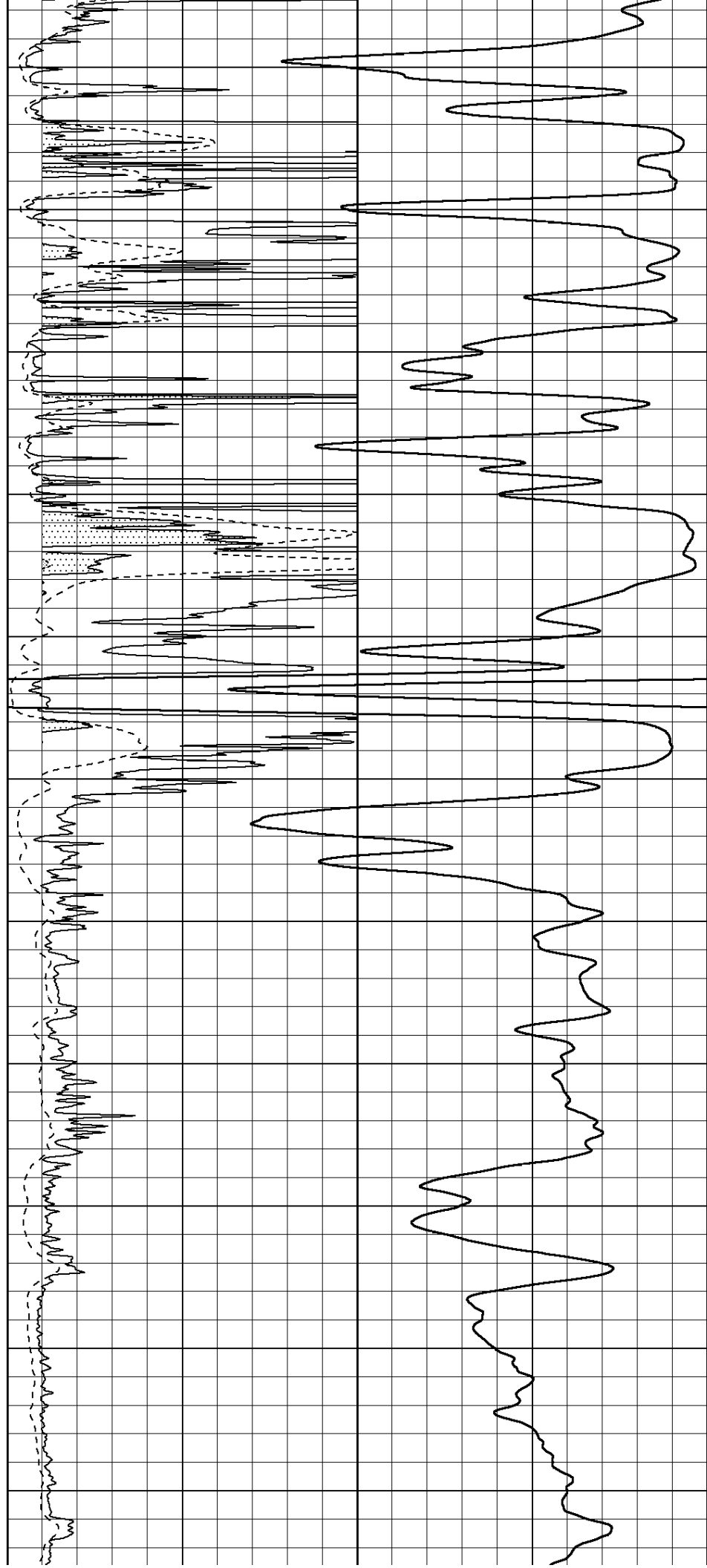
5150

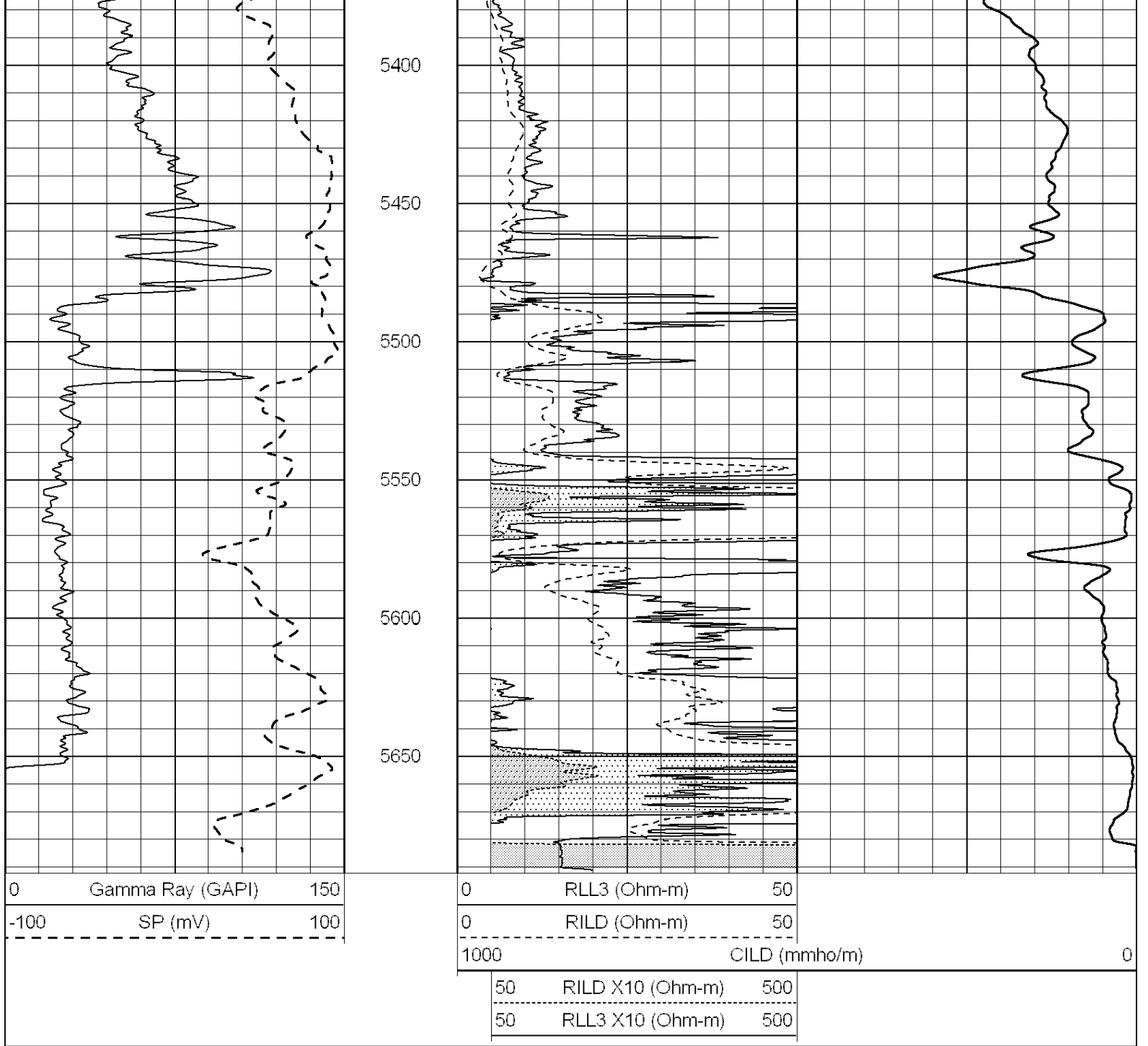
5200

5250

5300

5350





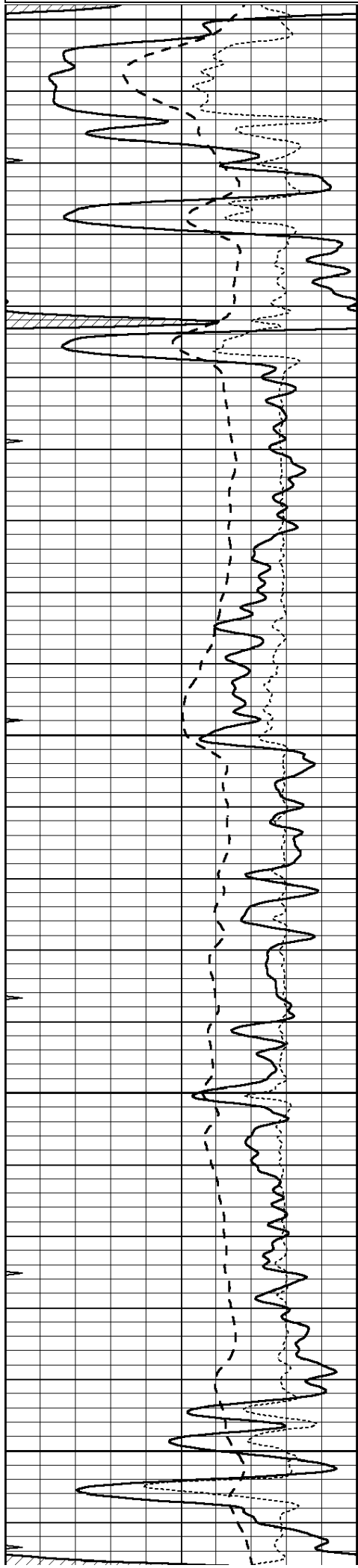
**COMPLETION
& PRODUCTION
SERVICES CO.**

MAIN SECTION

Database File: 22245pe.db
 Dataset Pathname: pass3.5
 Presentation Format: _dil
 Dataset Creation: Wed Jan 29 21:21:55 2014 by Calc SOC 120430
 Charted by: Depth in Feet scaled 1:240

0	GAMMA RAY (GAPI)	150
-100	SP (mV)	100
-250	Rxo/Rt	50
0	MINMK	20

0.2	SHALLOW GUARD (Ohm-m)	2000
0.2	DEEP INDUCTION (Ohm-m)	2000
0.2	MEDIUM INDUCTION (Ohm-m)	2000



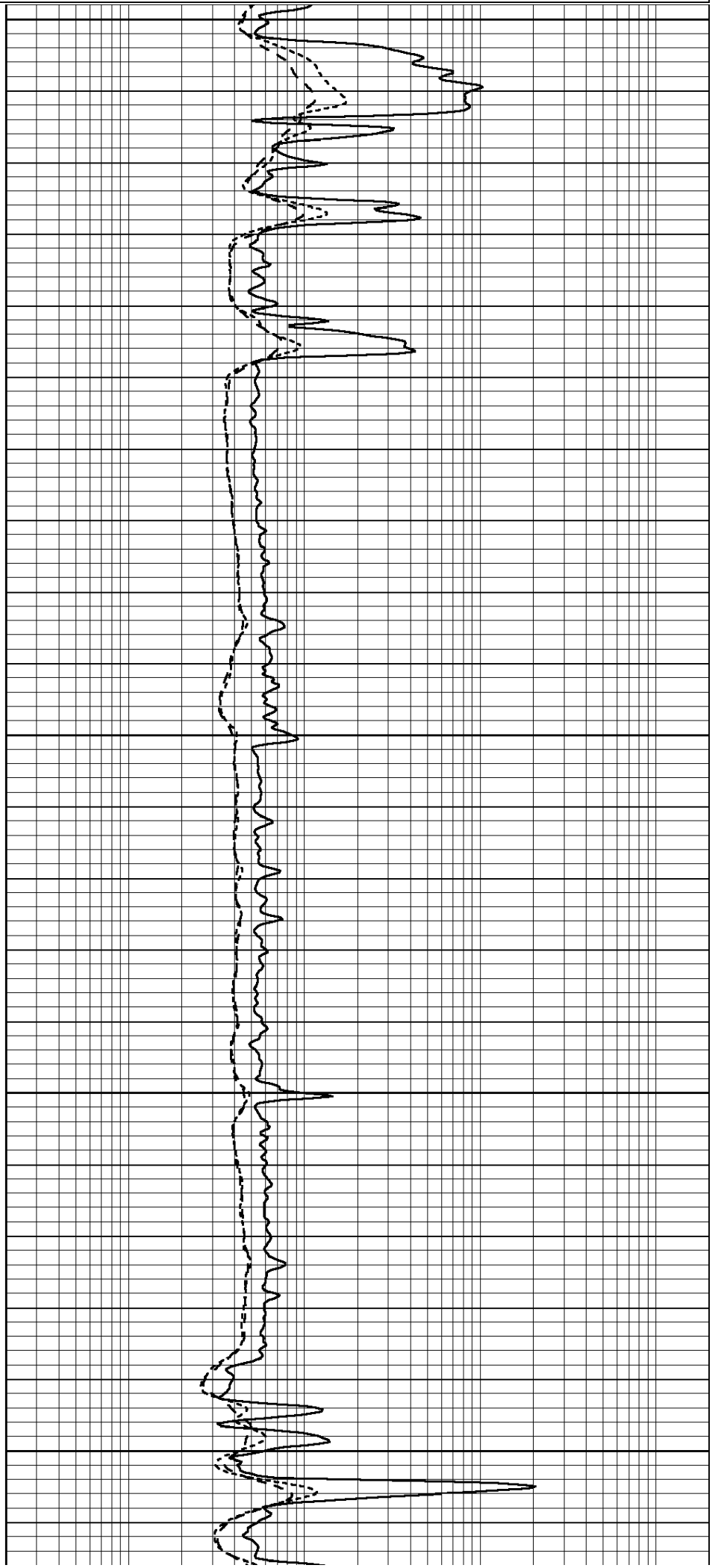
3900

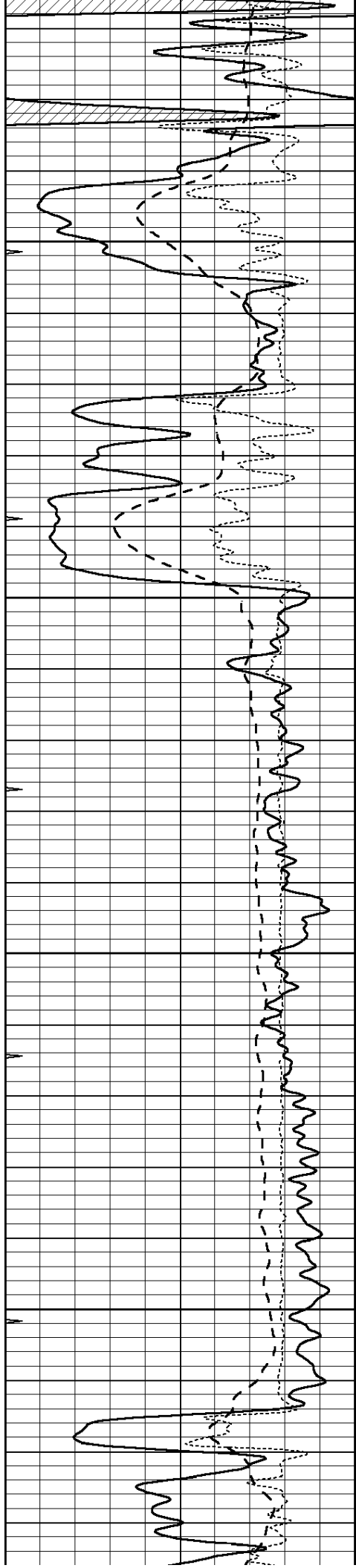
3950

4000

4050

4100



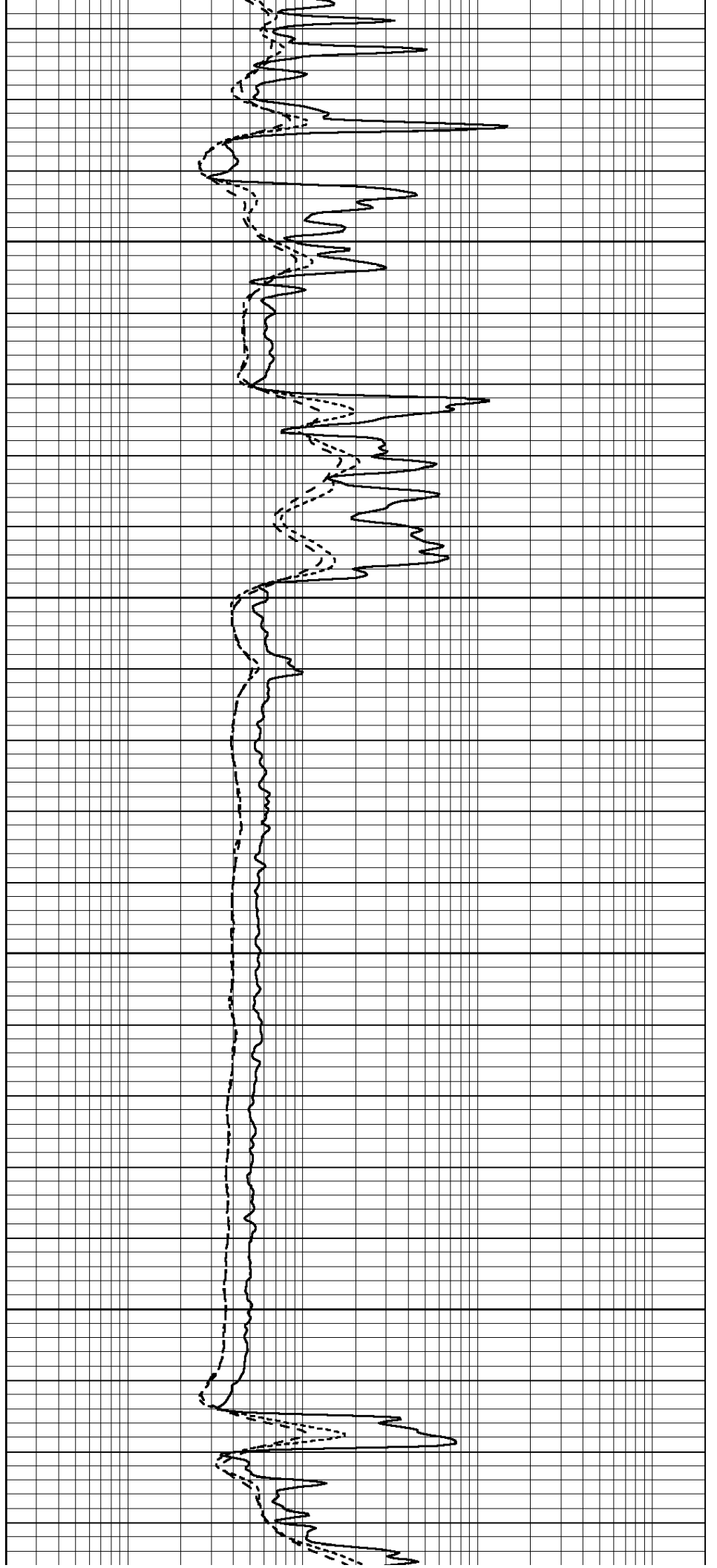


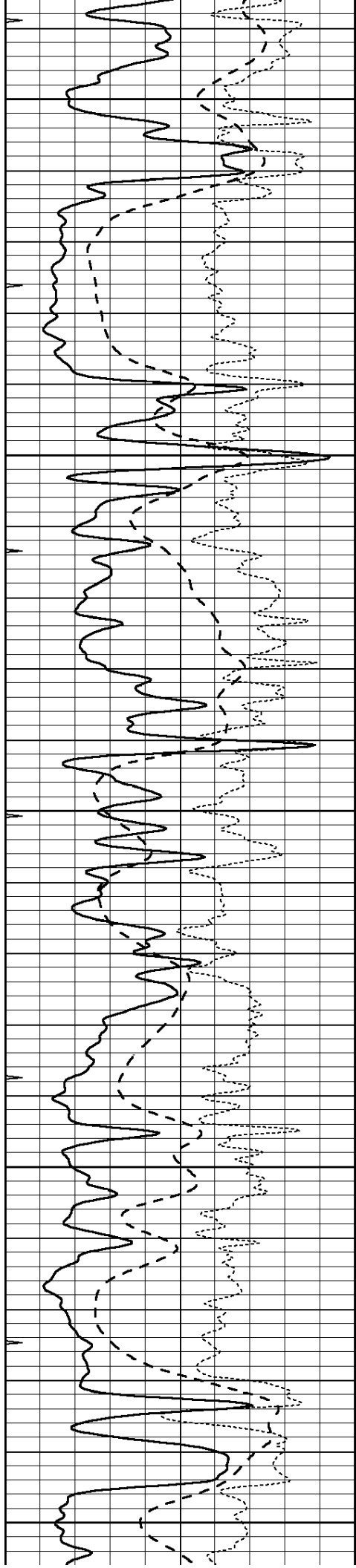
4150

4200

4250

4300





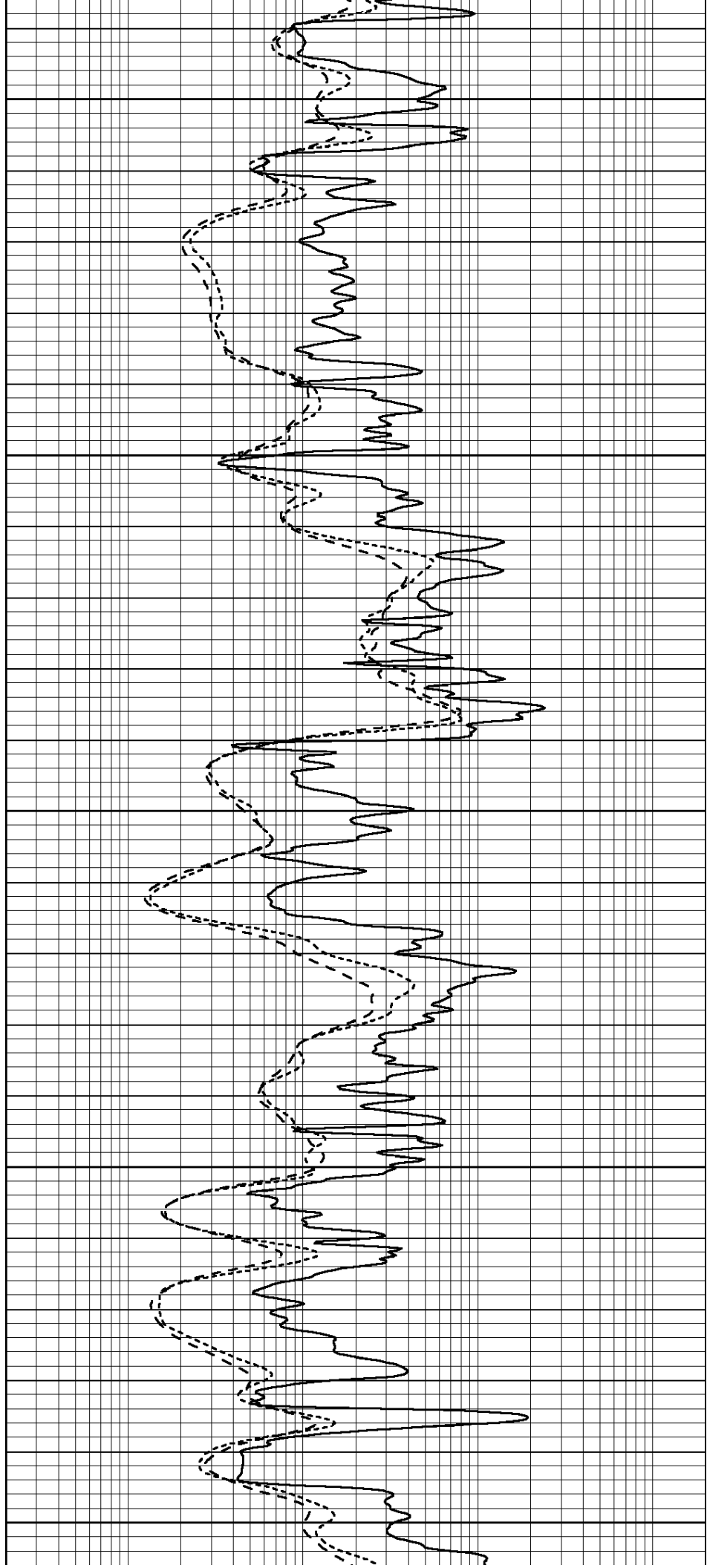
4350

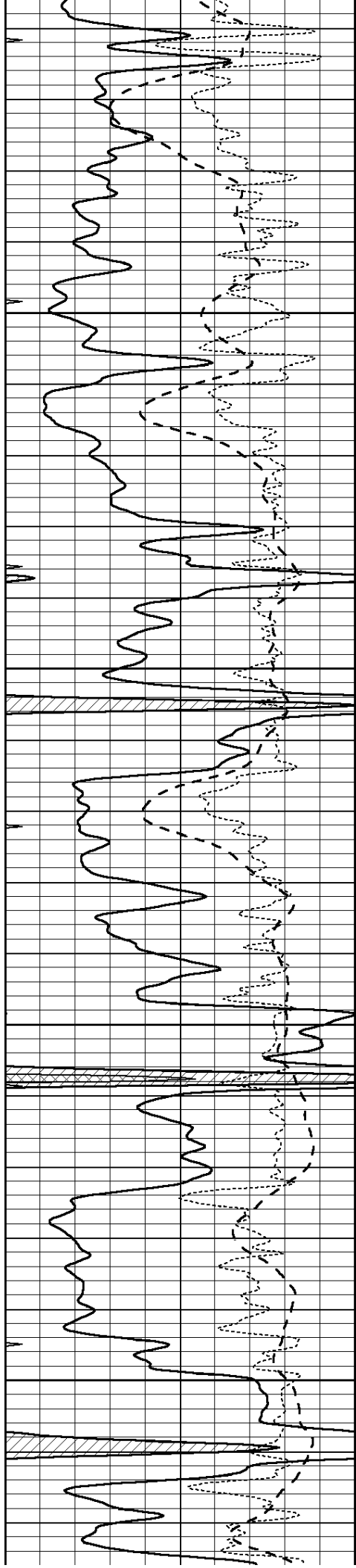
4400

4450

4500

4550



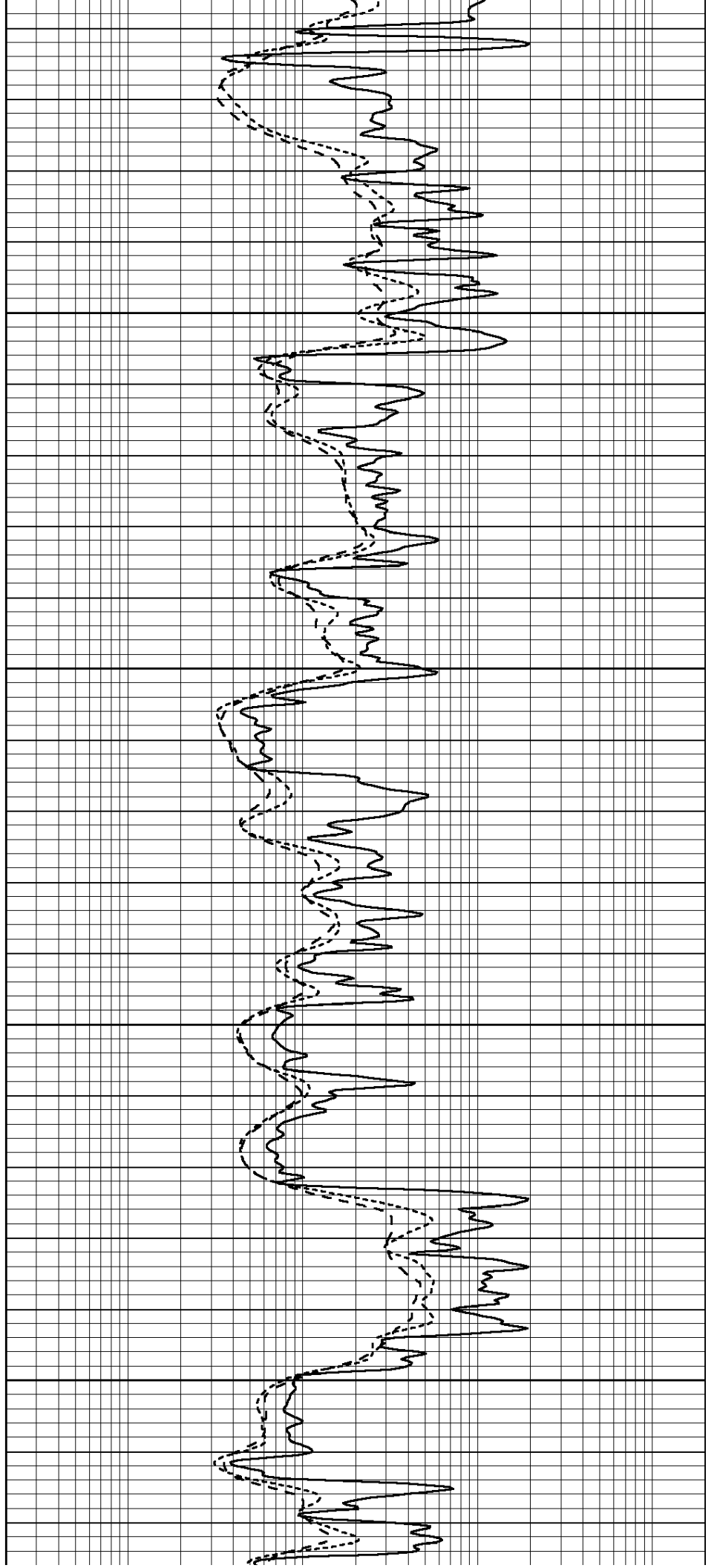


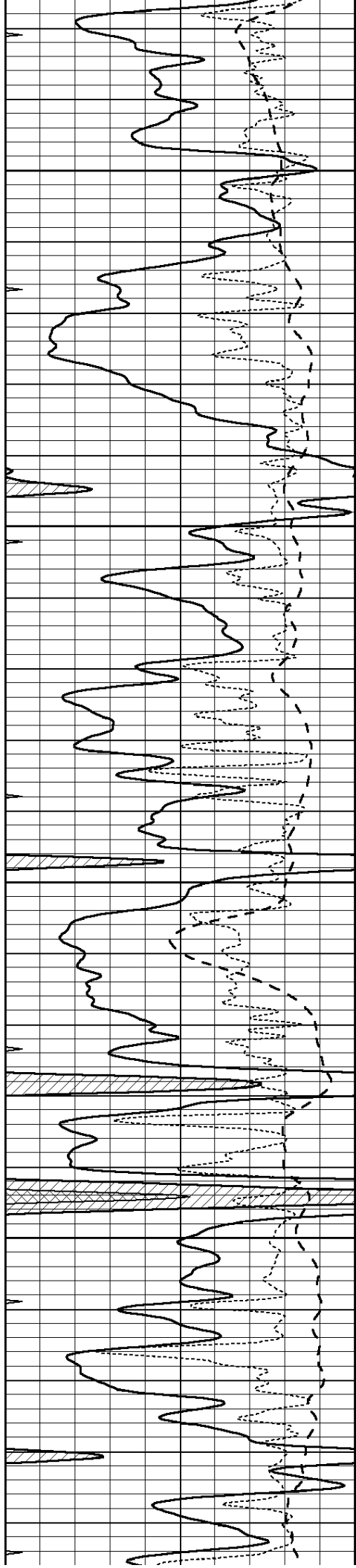
4600

4650

4700

4750



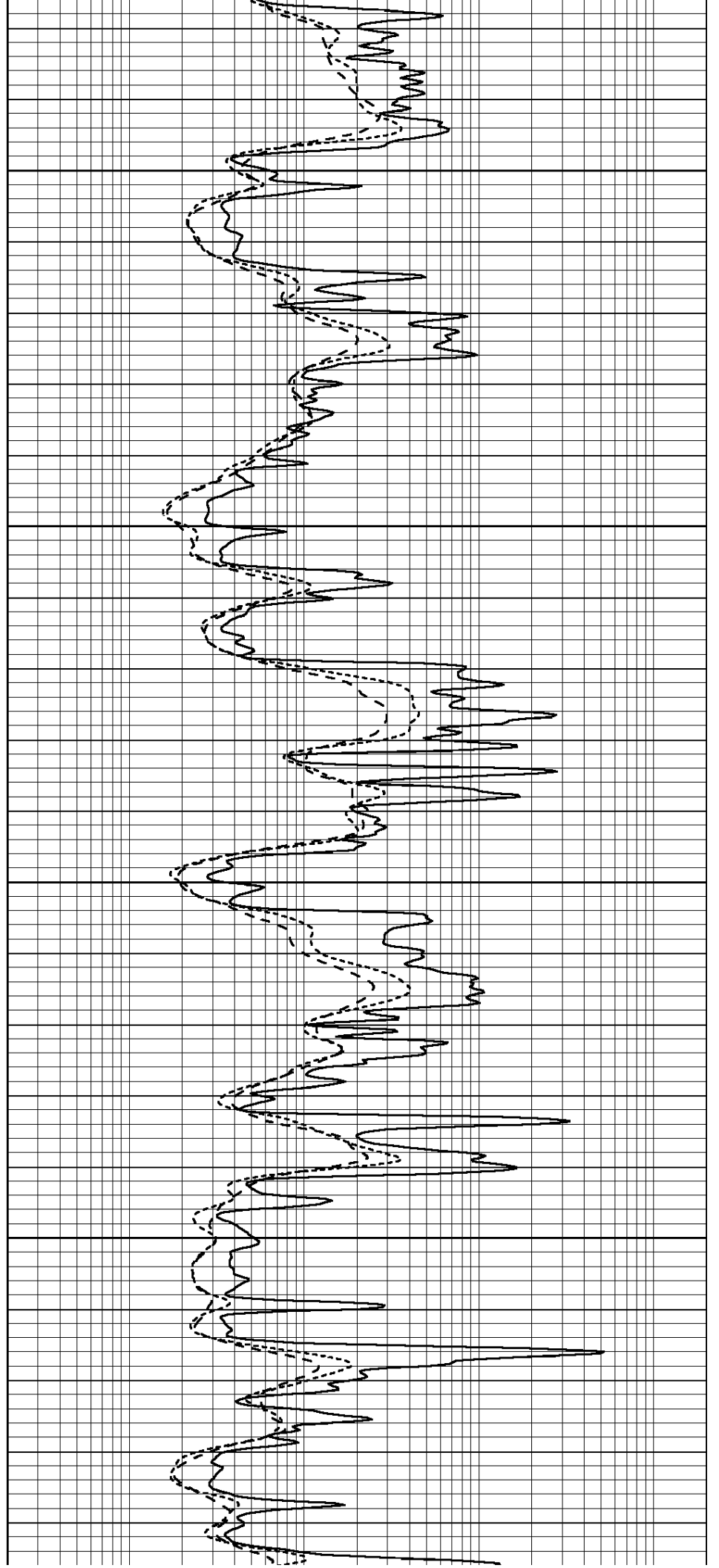


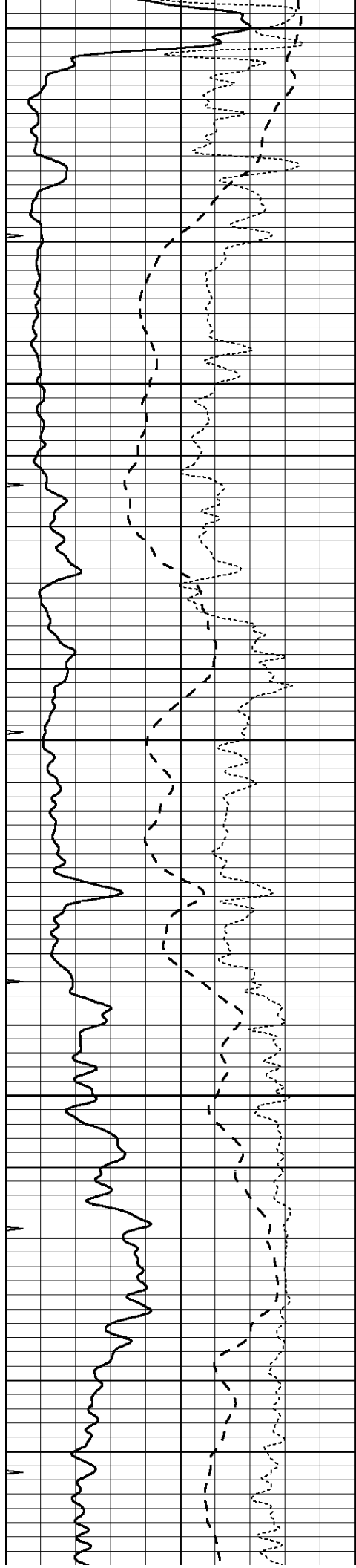
4800

4850

4900

4950





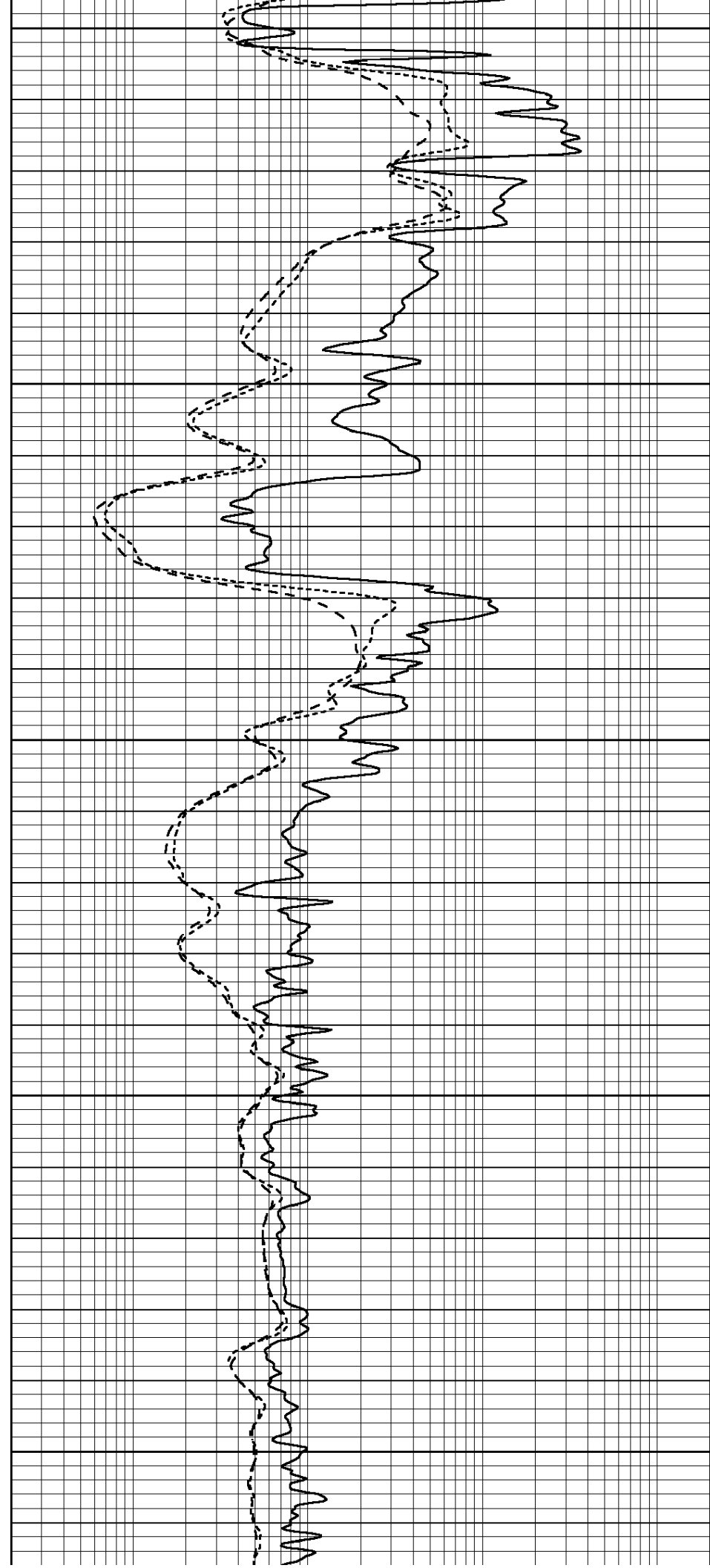
5000

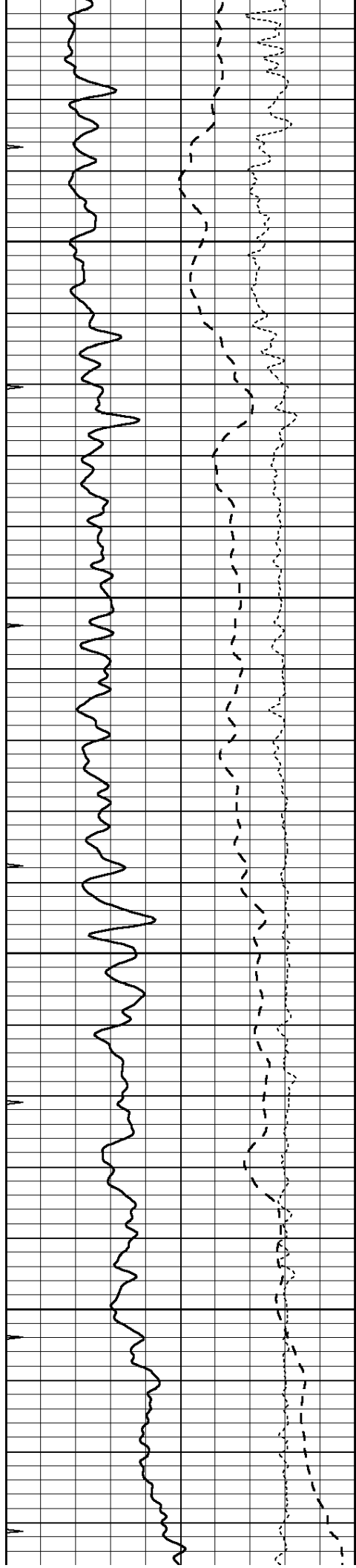
5050

5100

5150

5200



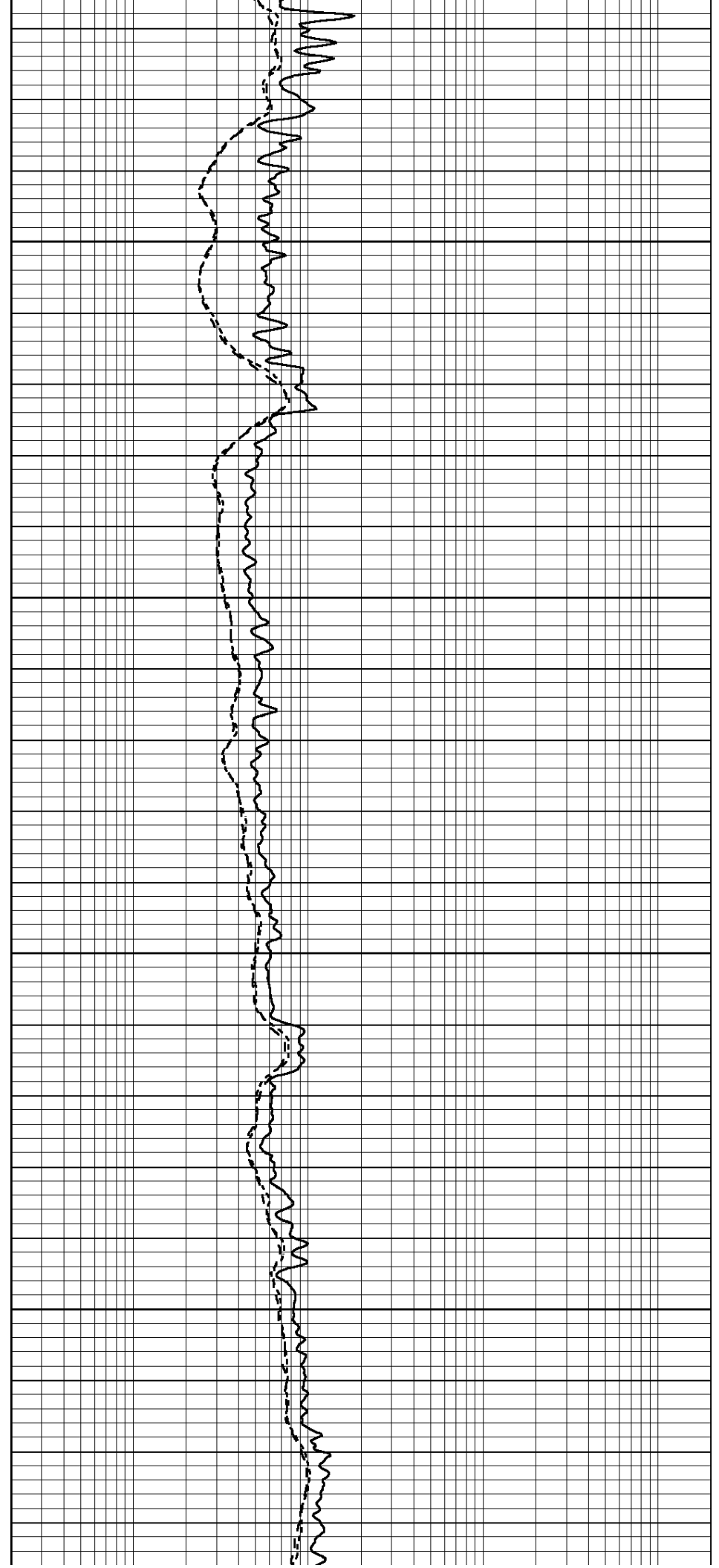


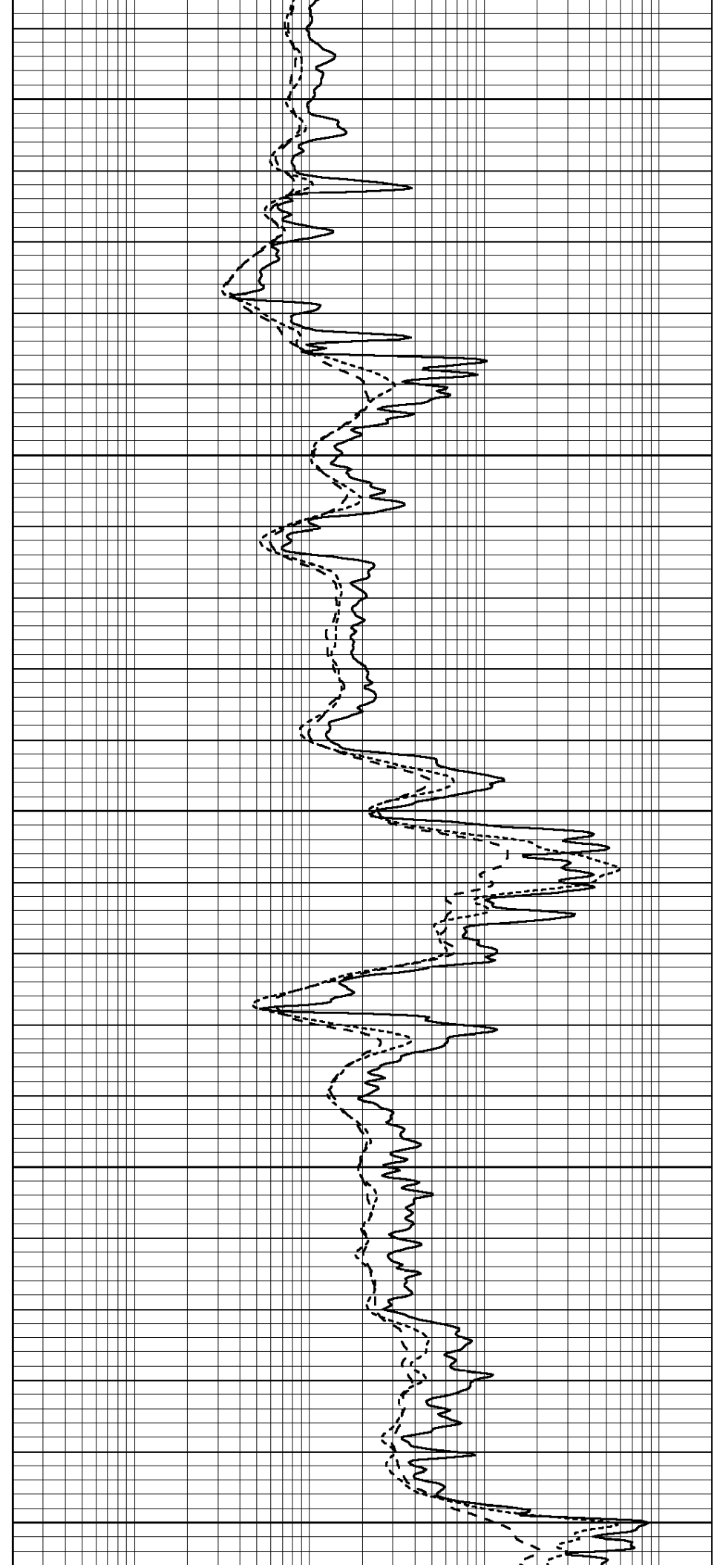
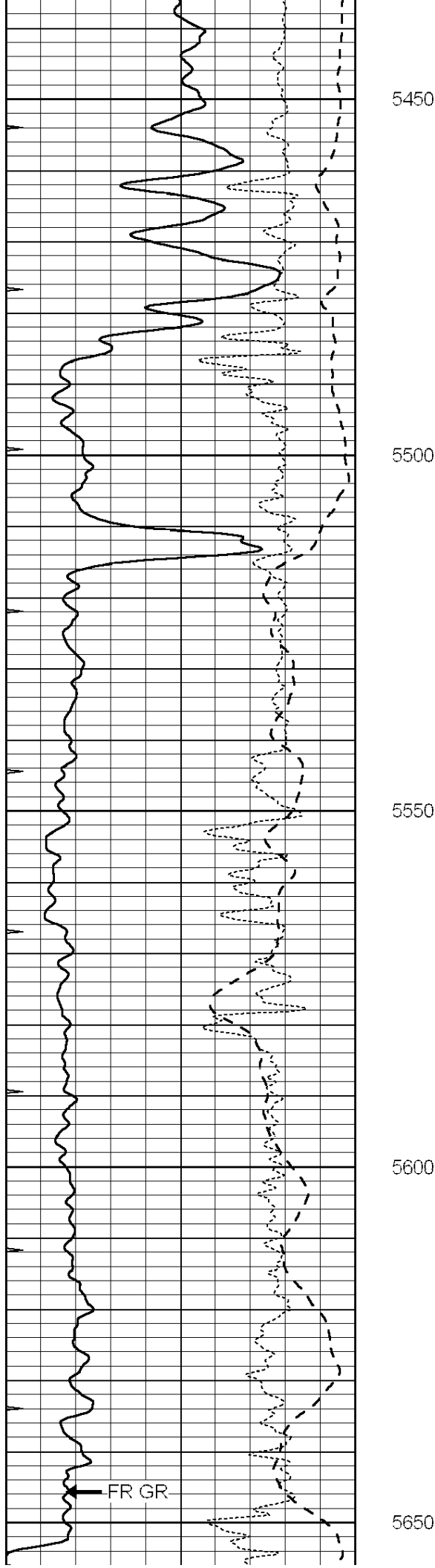
5250

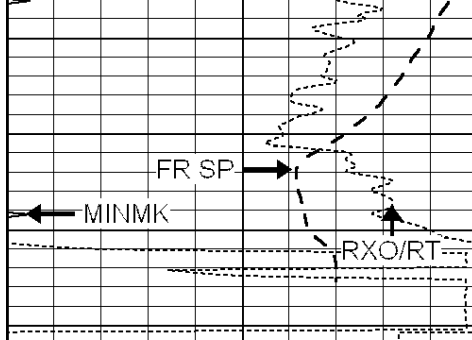
5300

5350

5400

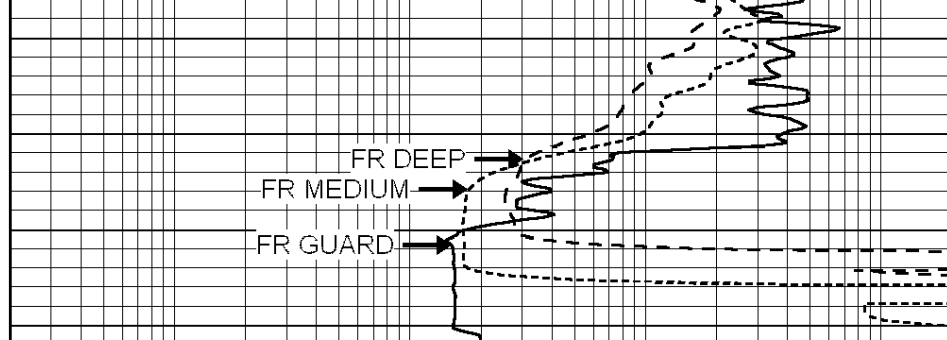






LTD 5684

0	GAMMA RAY (GAPI)	150
-100	SP (mV)	100
-250	Rxo/Rt	50
0	MINMK	20



0.2	SHALLOW GUARD (Ohm-m)	2000
0.2	DEEP INDUCTION (Ohm-m)	2000
0.2	MEDIUM INDUCTION (Ohm-m)	2000

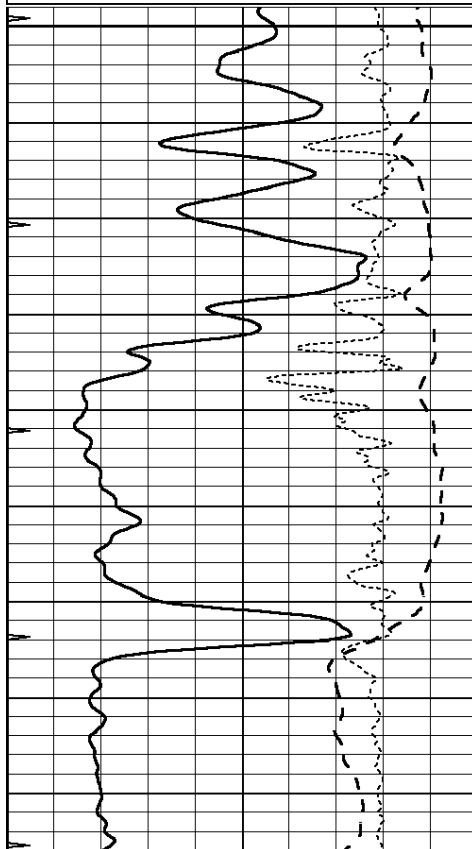


REPEAT SECTION

Database File: 22245pe.db
 Dataset Pathname: pass2.3
 Presentation Format: _dil
 Dataset Creation: Wed Jan 29 20:30:11 2014 by Calc SOC 120430
 Charted by: Depth in Feet scaled 1:240

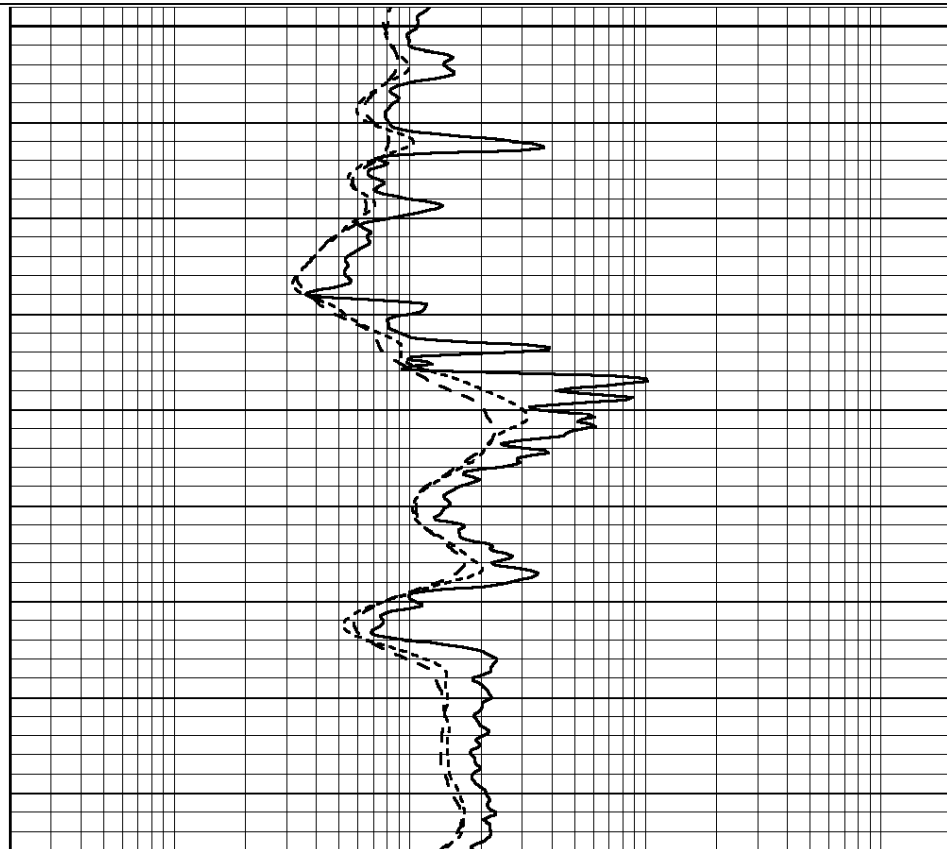
0	GAMMA RAY (GAPI)	150
-100	SP (mV)	100
-250	Rxo/Rt	50
0	MINMK	20

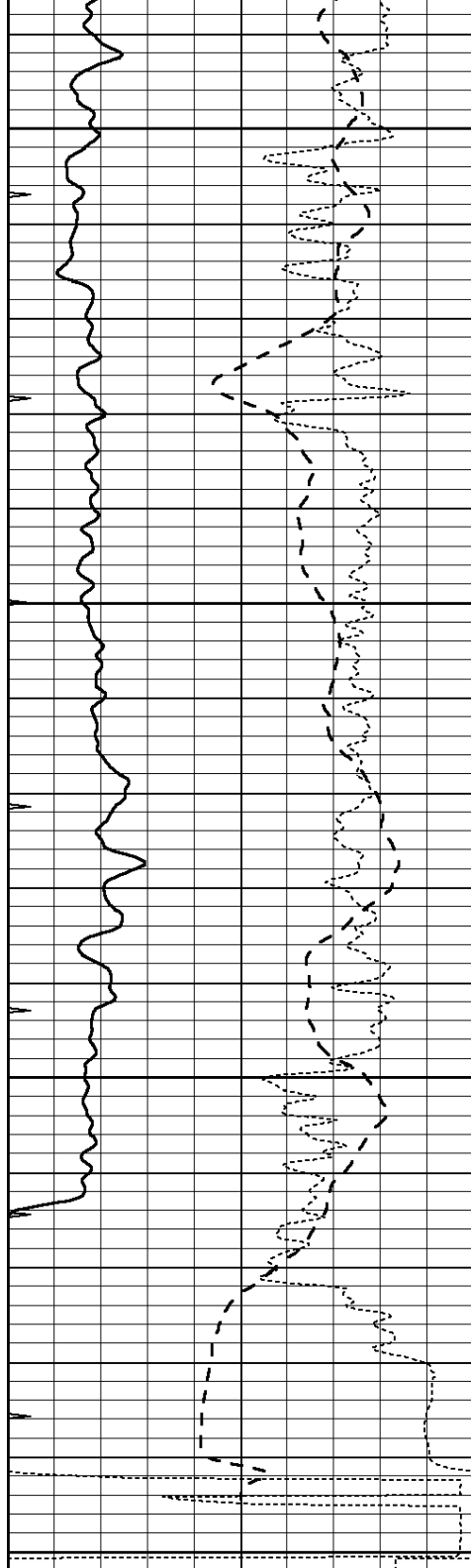
0.2	SHALLOW GUARD (Ohm-m)	2000
0.2	DEEP INDUCTION (Ohm-m)	2000
0.2	MEDIUM INDUCTION (Ohm-m)	2000



5450

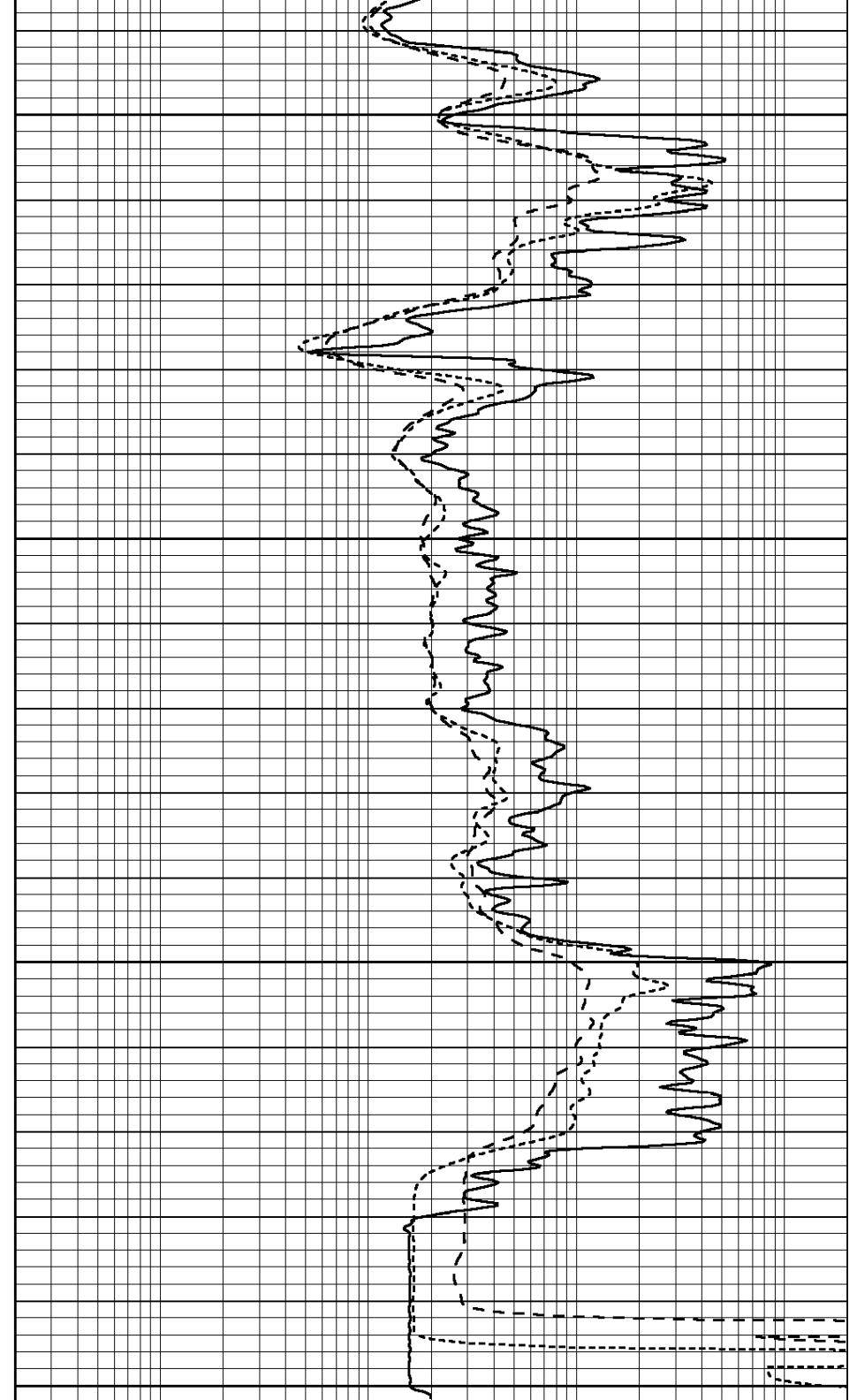
5500





5550
5600
5650
5700

0	GAMMA RAY (GAPI)	150
-100	SP (mV)	100
-250	Rxo/Rt	50
0	MINMK	20



0.2	SHALLOW GUARD (Ohm-m)	2000
0.2	DEEP INDUCTION (Ohm-m)	2000
0.2	MEDIUM INDUCTION (Ohm-m)	2000

Calibration Report

Database File: 22245pe.db
 Dataset Pathname: pass3.5
 Dataset Creation: Wed Jan 29 21:21:55 2014 by Calc SOC 120430

Surface Calibration

		Readings			References			Results	
Loop:	Air	Loop		Air	Loop		m	b	
Deep	-0.014	0.629	V	0.000	400.000	mmho/m	650.000	-6.000	
Medium	0.039	0.728	V	0.000	464.000	mmho/m	660.000	-9.500	
Internal:	Zero	Cal		Zero	Cal		m	b	
Deep	0.011	0.610	V	0.000	400.000	mmho/m	667.135	-7.256	
Medium	0.005	0.712	V	0.000	464.000	mmho/m	655.677	-3.102	

Downhole Calibration

		Readings			References			Results	
	Zero	Cal		Zero	Cal		m'	b'	
Deep	0.000	0.000	mmho/m	14.508	388.384	mmho/m	1.000	0.000	
Medium	0.000	0.000	mmho/m	166.367	504.400	mmho/m	1.000	0.000	
LL3		7.500	V		1400.000	Ohm-m			
		0.000	V		20.000	Ohm-m			
		-7.200	V		4000.000	mmho-m			

After Survey Verification

		Readings			Targets			Results	
	Zero	Cal		Zero	Cal		m'	b'	
Deep	0.000	0.000	mmho/m	0.000	0.000	mmho/m	0.000	0.000	
Medium	0.000	0.000	mmho/m	0.000	0.000	mmho/m	0.000	0.000	
LL3		1.000	Ohm-m		1.000	Ohm-m			
		0.000	Ohm-m		0.000	Ohm-m			
		1.000	mmho-m		1.000	mmho-m			

Litho Density Calibration Report
 Serial: 004N Model: PRB

Master Calibration

Performed Mon Jun 03 09:36:56 2013

	Background	Magnesium	Aluminum	Sandstone	
Window 1	1417.6	10391.4	3464.6	11537.5	cps
Window 2	1295.0	8959.7	3050.1	9816.4	cps
Window 3	1105.1	5464.2	2051.0	5838.8	cps
Window 4	315.0	317.7	312.9	319.8	cps
Long Space	0.0	7664.6	1755.0	8521.3	cps
Short Space	1.8	1582.4	1040.8	1699.4	cps
Rho		1.7100	2.5900	1.3800	g/cc
Pe		0.0000	2.5700	1.5500	
Rib Angle	: 44.1	Rib Slope	: 0.970	Density/Spine Ratio	: 0.574
Spine Angle	: 74.1	Spine Slope	: 3.519	Spine Intercept	: -17.0

Before Survey Verification

Performed Wed Dec 31 18:00:00 1969

Window 1	0.0	0.0	0.0	0.0	cps
Window 2	0.0	0.0	0.0	0.0	cps
Window 3	0.0	0.0	0.0	0.0	cps
Window 4	0.0	0.0	0.0	0.0	cps
Long Space	0.0	0.0	0.0	0.0	cps
Short Space	0.0	0.0	0.0	0.0	cps

Short Space	0.0	0.0	0.0	0.0	cps
Measured Rho	0.0000	0.0000	0.0000	0.0000	g/cc
Measured Correction	0.0000	0.0000	0.0000	0.0000	g/cc
Measured Pe			0.0000	0.0000	

After Survey Verification

Performed Wed Dec 31 18:00:00 1969

Window 1	0.0	0.0	0.0	0.0	cps
Window 2	0.0	0.0	0.0	0.0	cps
Window 3	0.0	0.0	0.0	0.0	cps
Window 4	0.0	0.0	0.0	0.0	cps
Long Space	0.0	0.0	0.0	0.0	cps
Short Space	0.0	0.0	0.0	0.0	cps
Measured Rho		0.0000	0.0000	0.0000	g/cc
Measured Correction		0.0000	0.0000	0.0000	g/cc
Measured Pe			0.0000	0.0000	

Compensated Neutron Calibration Report

Serial Number: 070808
 Tool Model: Probe

PRE-SURVEY VERIFICATION

Detector	Readings	Measured	Target
Short Space	cps		
Long Space	cps	pu	pu

POST-SURVEY VERIFICATION

Detector	Readings	Measured	Target
Short Space	cps		
Long Space	cps	pu	pu

Gamma Ray Calibration Report

Serial Number: 070559
 Tool Model: OPEN_GR
 Performed: Thu Dec 19 09:01:02 2013

Calibrator Value: 1.0 GAPI

Background Reading: 0.0 cps
 Calibrator Reading: 1.0 cps

Sensitivity: 0.2800 GAPI/cps