



**COMPLETION
& PRODUCTION
SERVICES CO.**

**MICRO
LOG**

Company CASTELLI EXPLORATION, INC.
Well DUNN #1-24
Field SHIMER
County COMANCHE
State KANSAS

Company CASTELLI EXPLORATION, INC.
Well DUNN #1-24
Field SHIMER
County COMANCHE State KANSAS

Location: API # : 15-033-21745-0000
2130' FSL & 585' FEL
SW - NE - NE - SE
SEC 24 TWP 33S RGE 17W
Permanent Datum GROUND LEVEL Elevation 1818
Log Measured From KELLY BUSHING 12' A.G.L.
Drilling Measured From KELLY BUSHING
Other Services
CDL/CNL/PE
DIL
Elevation
K.B. 1830
D.F. 1828
G.L. 1818

Date	1/30/14
Run Number	TWO
Depth Driller	5700
Depth Logger	5684
Bottom Logged Interval	5682
Top Log Interval	3900
Casing Driller	13 3/8" @ 312'
Casing Logger	312
Bit Size	7 7/8"
Type Fluid in Hole	CHEMICAL MUD
Density / Viscosity	9.3/4.1
pH / Fluid Loss	9.5/9.2
Source of Sample	FLOWLINE
Rim @ Meas. Temp	.950 @ 60F
Rmf @ Meas. Temp	.713 @ 60F
Rmc @ Meas. Temp	1.14 @ 60F
Source of Rmf / Rmc	MEASUREMENT
Rim @ BHT	.435 @ 131F
Time Circulation Stopped	5.5 HOURS
Time Logger on Bottom	7:45 P.M.
Maximum Recorded Temperature	131F
Equipment Number	4854
Location	HAYS, KANSAS
Recorded By	JEFF LUEBBERS
Witnessed By	TOM CASTELLI
	RICK POPP

<<< Fold Here >>>

All interpretations are opinions based on inferences from electrical or other measurements and we cannot and do not guarantee the accuracy or correctness of any interpretation, and we shall not, except in the case of gross or willful negligence on our part, be liable or responsible for any loss, costs, damages, or expenses incurred or sustained by anyone resulting from any interpretation made by any of our officers, agents or employees. These interpretations are also subject to our general terms and conditions set out in our current Price Schedule.

Comments

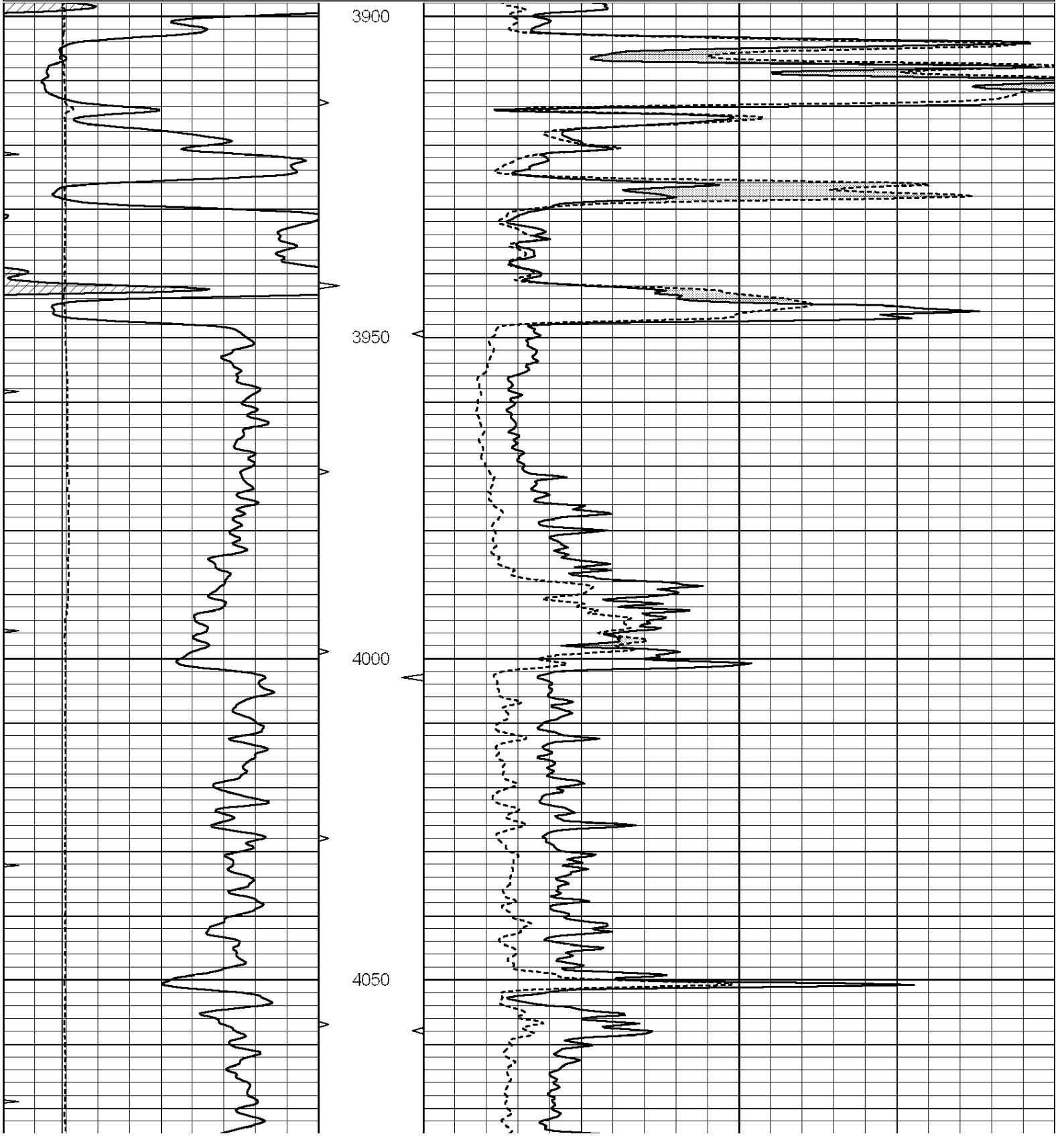
THANK YOU FOR USING "NABORS" HAYS, KANSAS (785) 628-6395
DIRECTIONS
COLDWATER, KS. 9E. ON HWY 160 TO (MM #193)"RD.22", 4S. TO STOP SIGN, 1E. TO "RD.23", 2S. TO (SEVERAL LEASE SIGNS), E. INTO CATTLE GUARD, FOLLOW MAIN TRAIL ANOTHER 3 MILES E. & S.

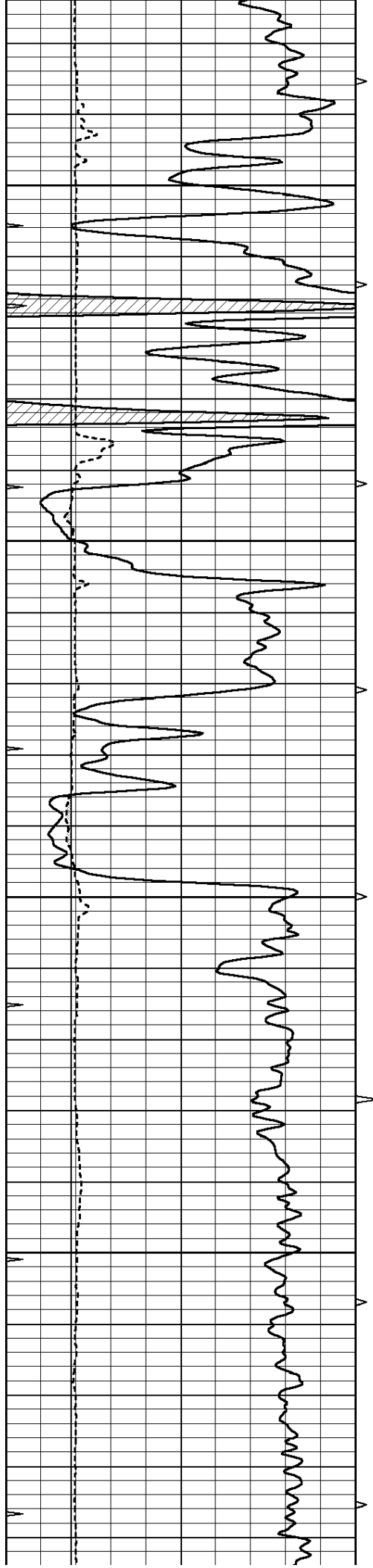


MAIN SECTION

Database File: 22245pe.db
 Dataset Pathname: pass7.2
 Presentation Format: micro
 Dataset Creation: Wed Jan 29 23:18:25 2014 by Calc SOC 120430
 Charted by: Depth in Feet scaled 1:240

0	GAMMA RAY (GAPI)	150	ABHV	0	MEL1.5 (Ohm-m)	40
6	CALIPER (in)	16	10 (ft3)	0	MEL2.0 (Ohm-m)	40
0	MINMK	20	TBHV			
			0 (ft3)	10		



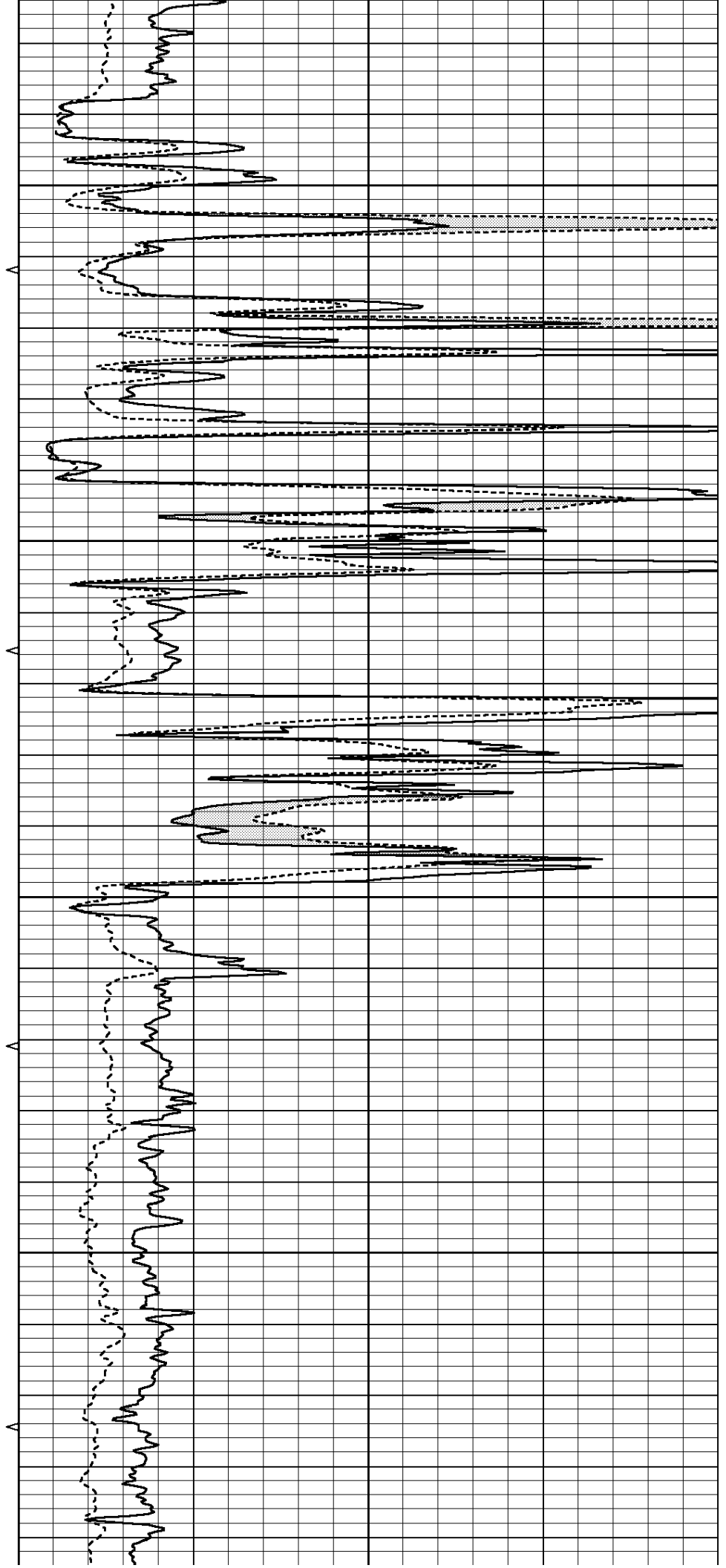


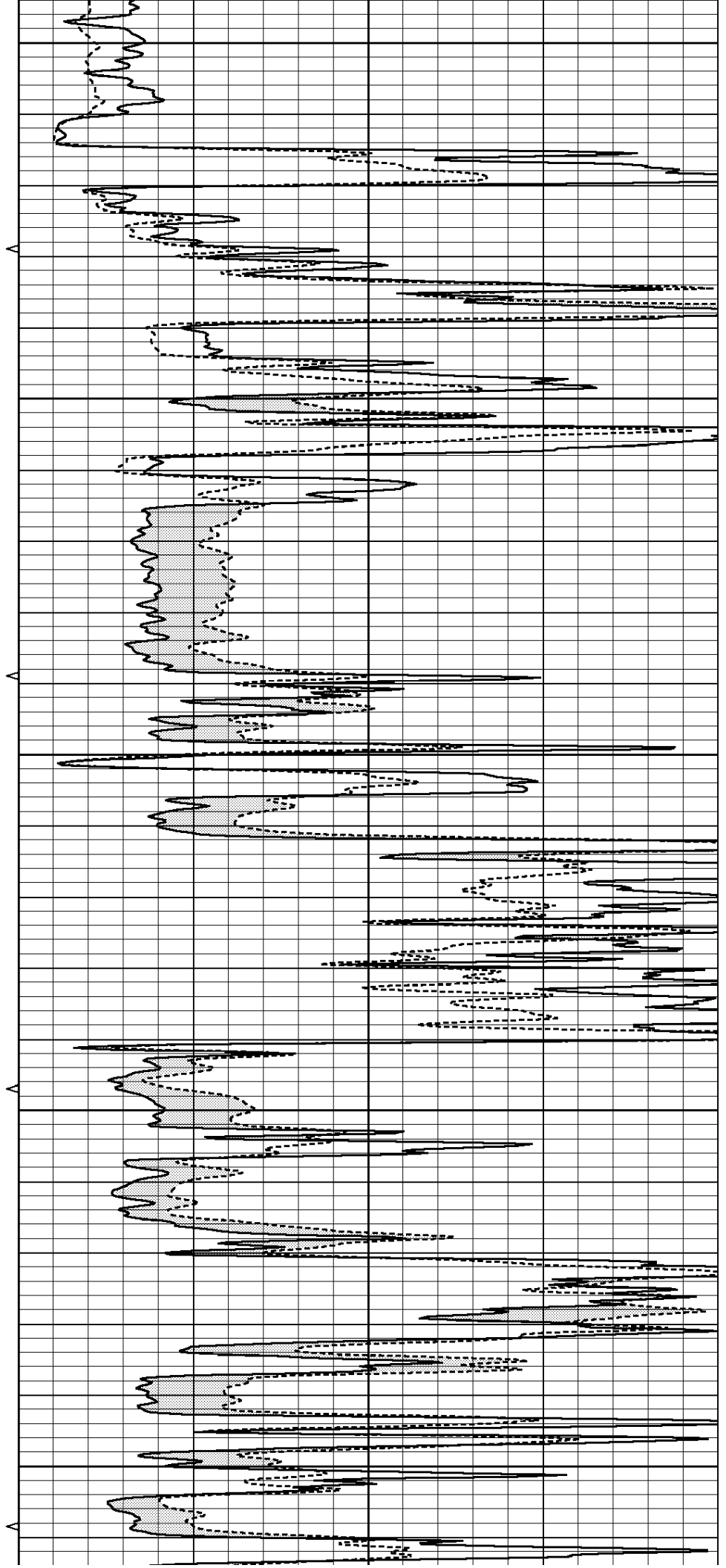
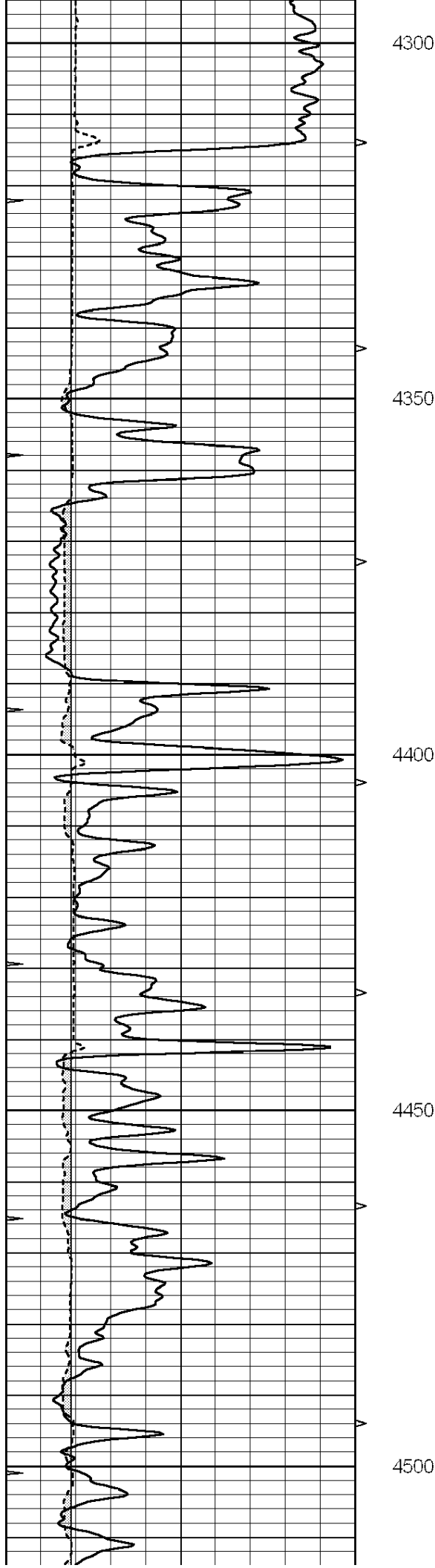
4100

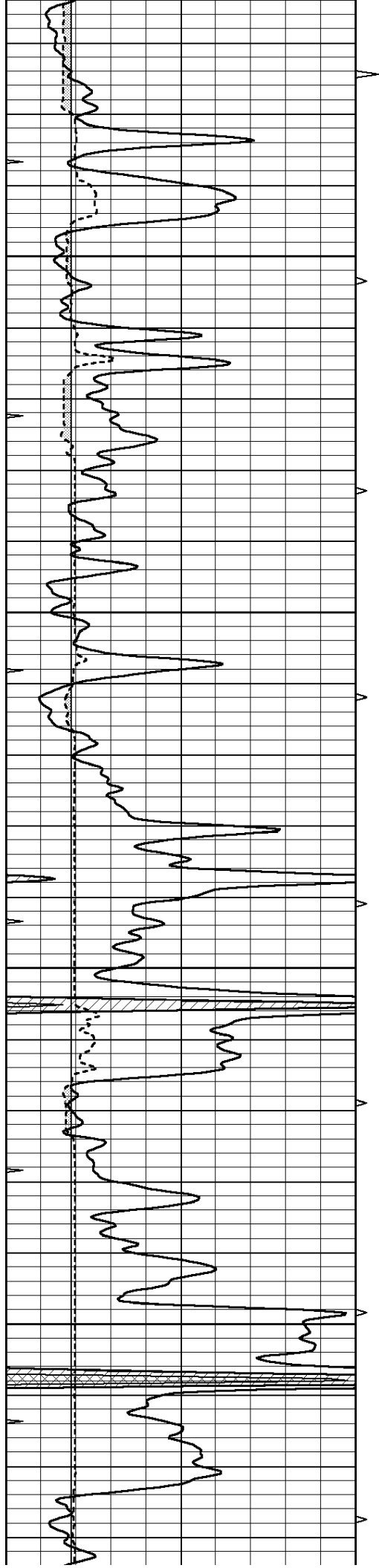
4150

4200

4250





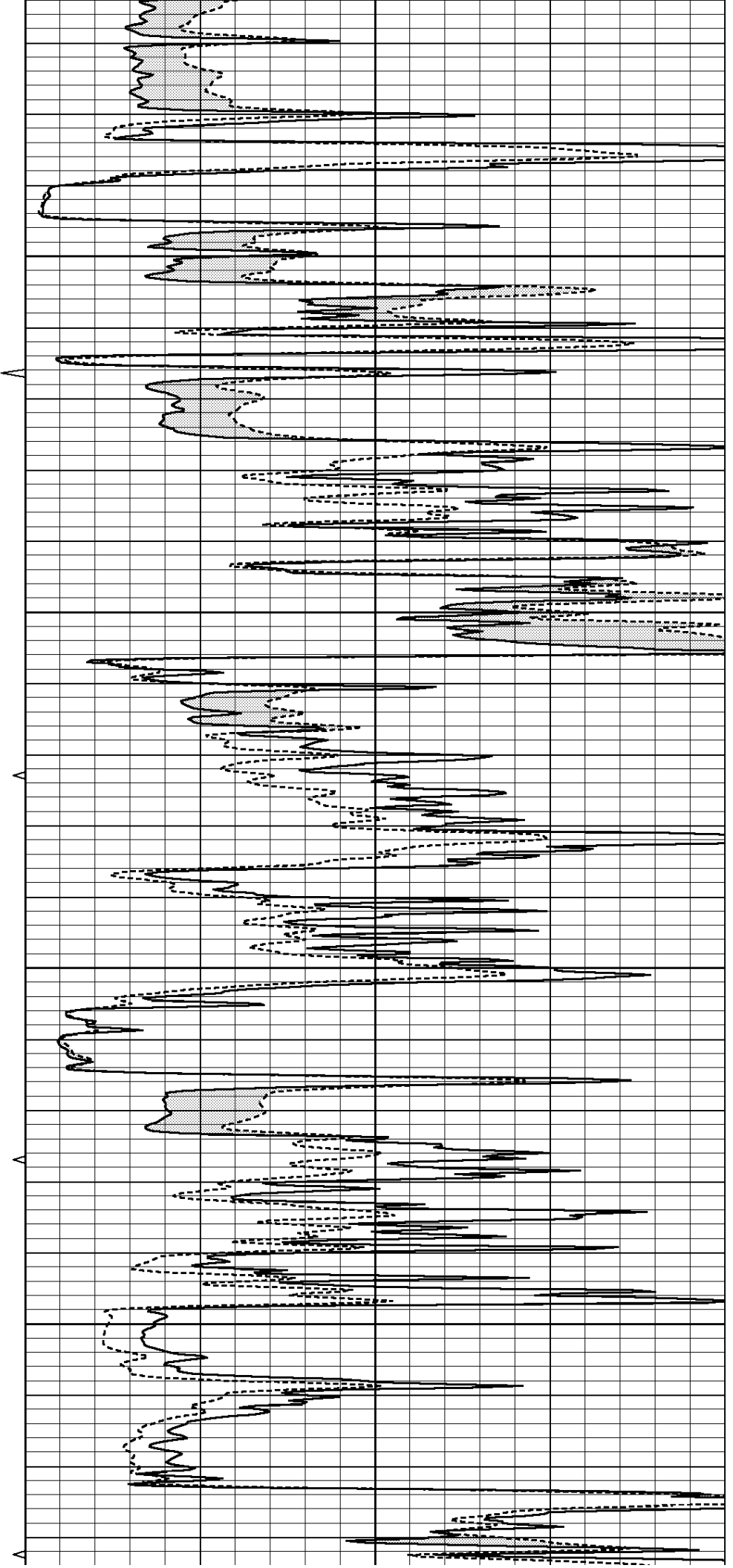


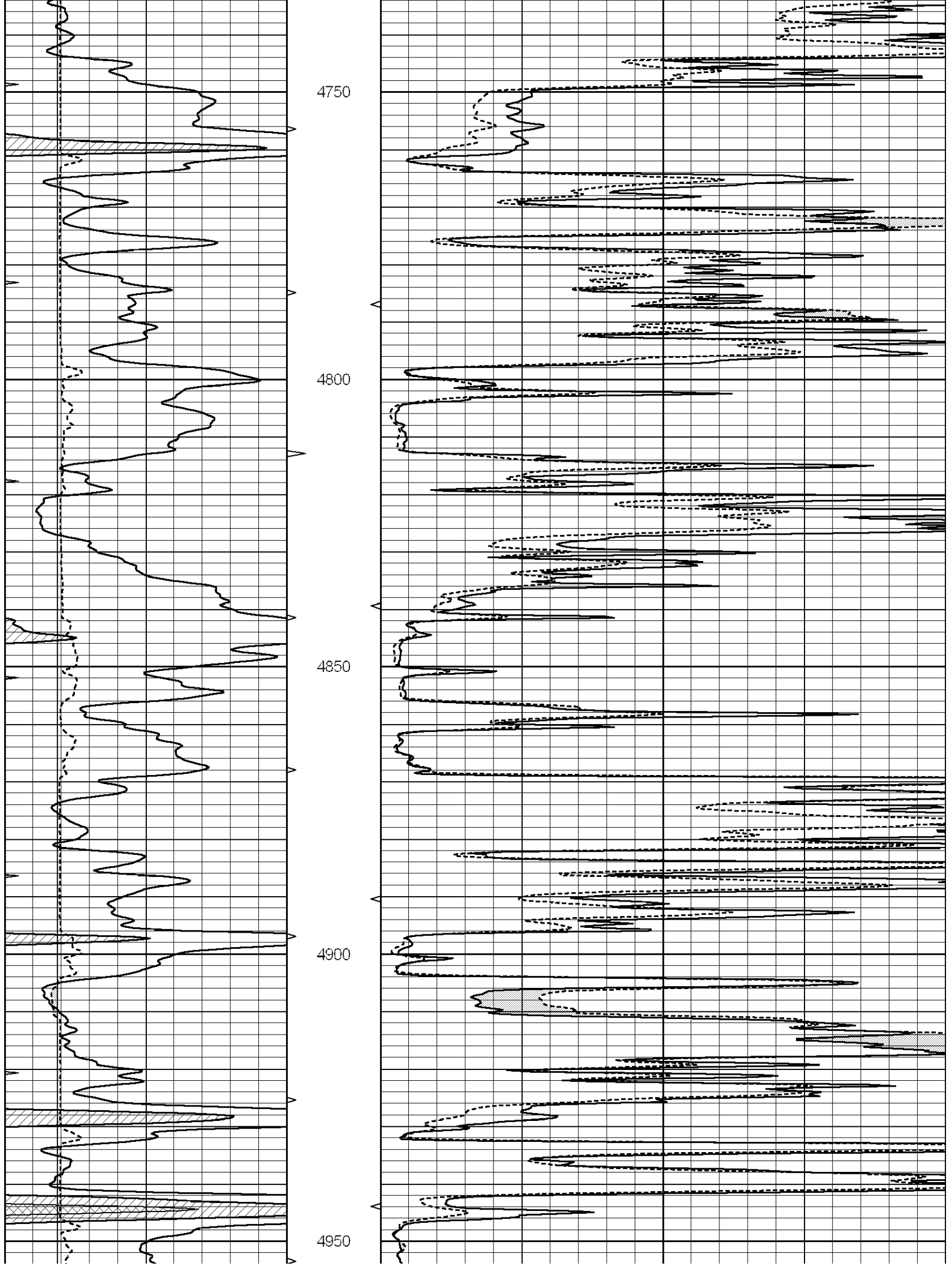
4550

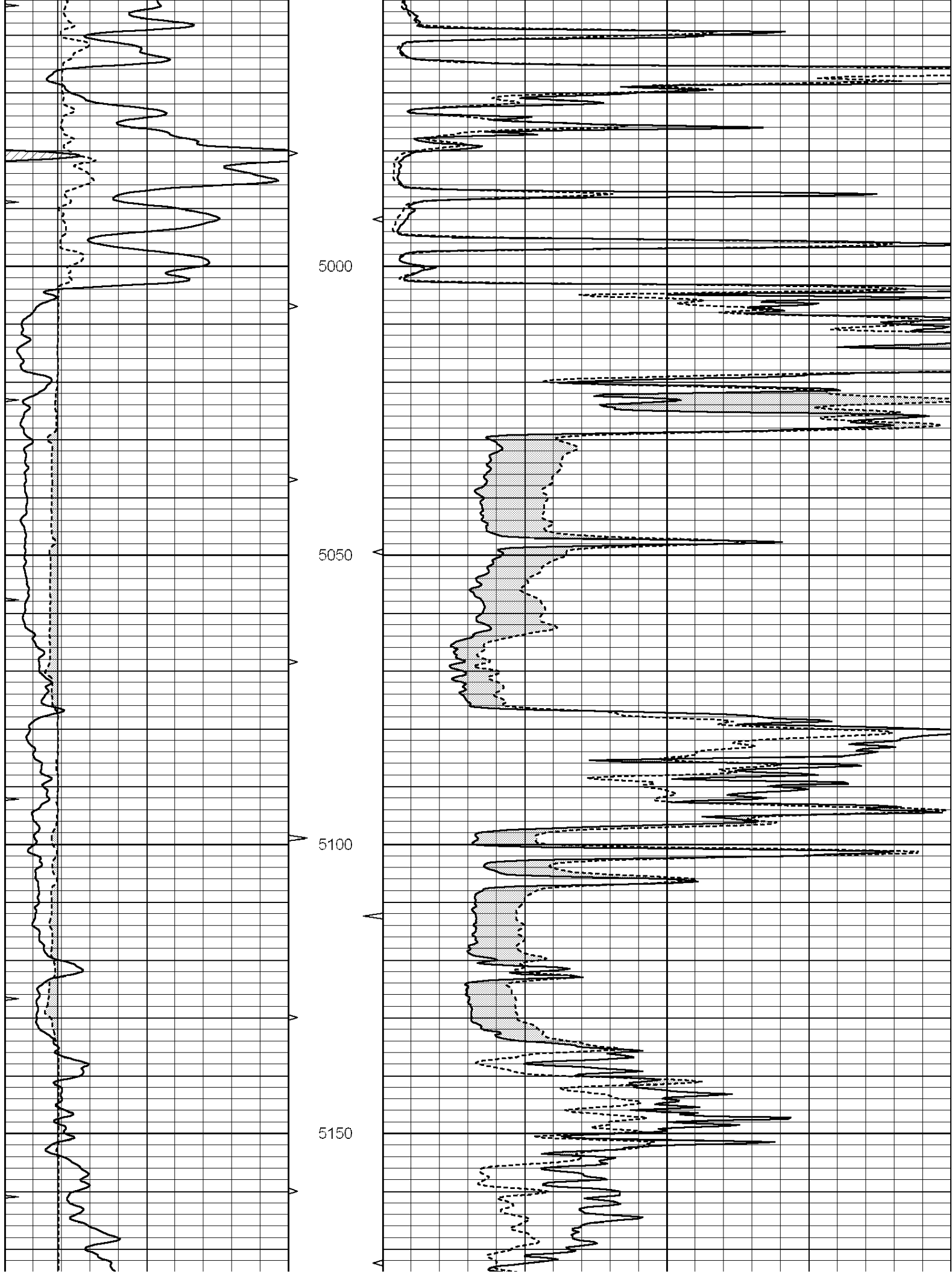
4600

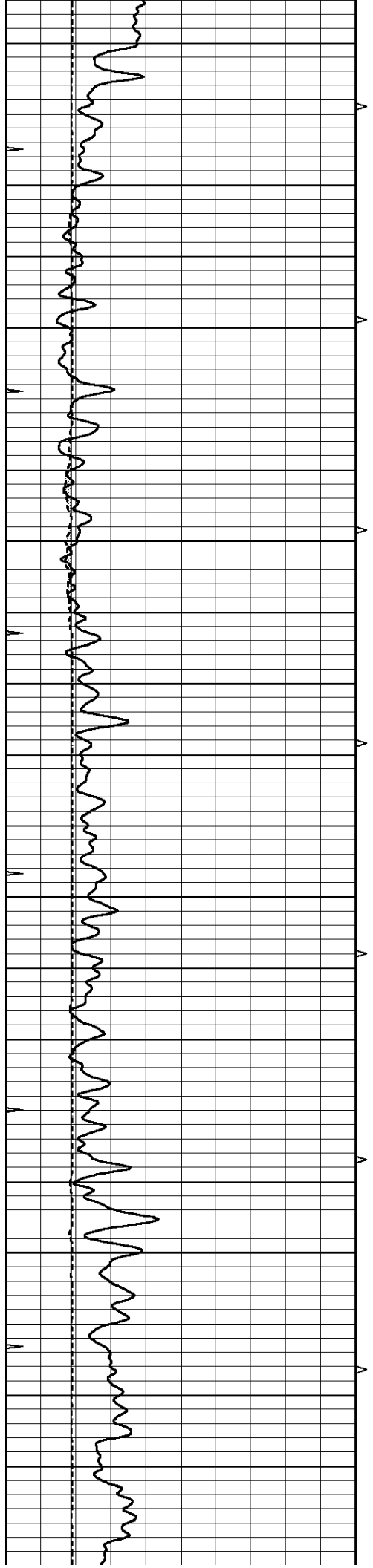
4650

4700







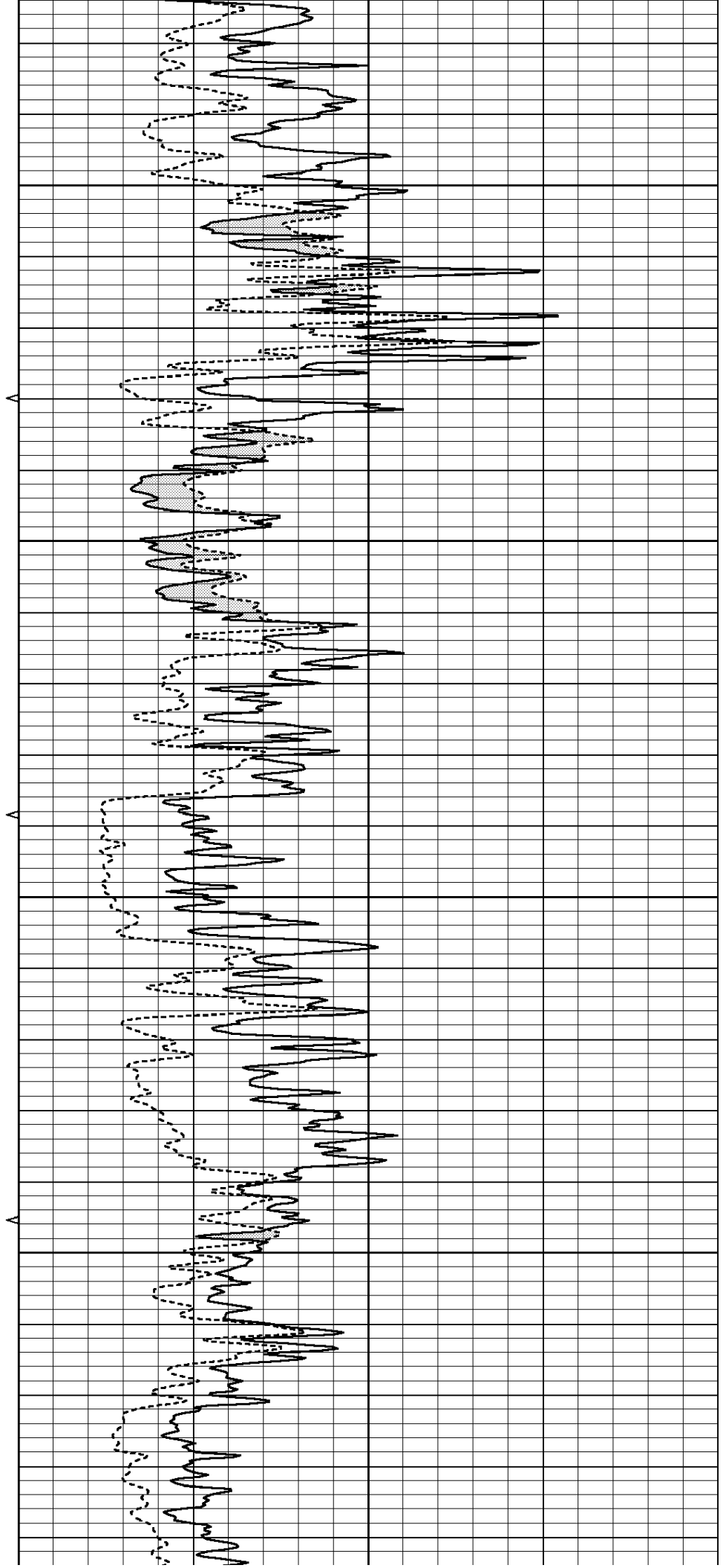


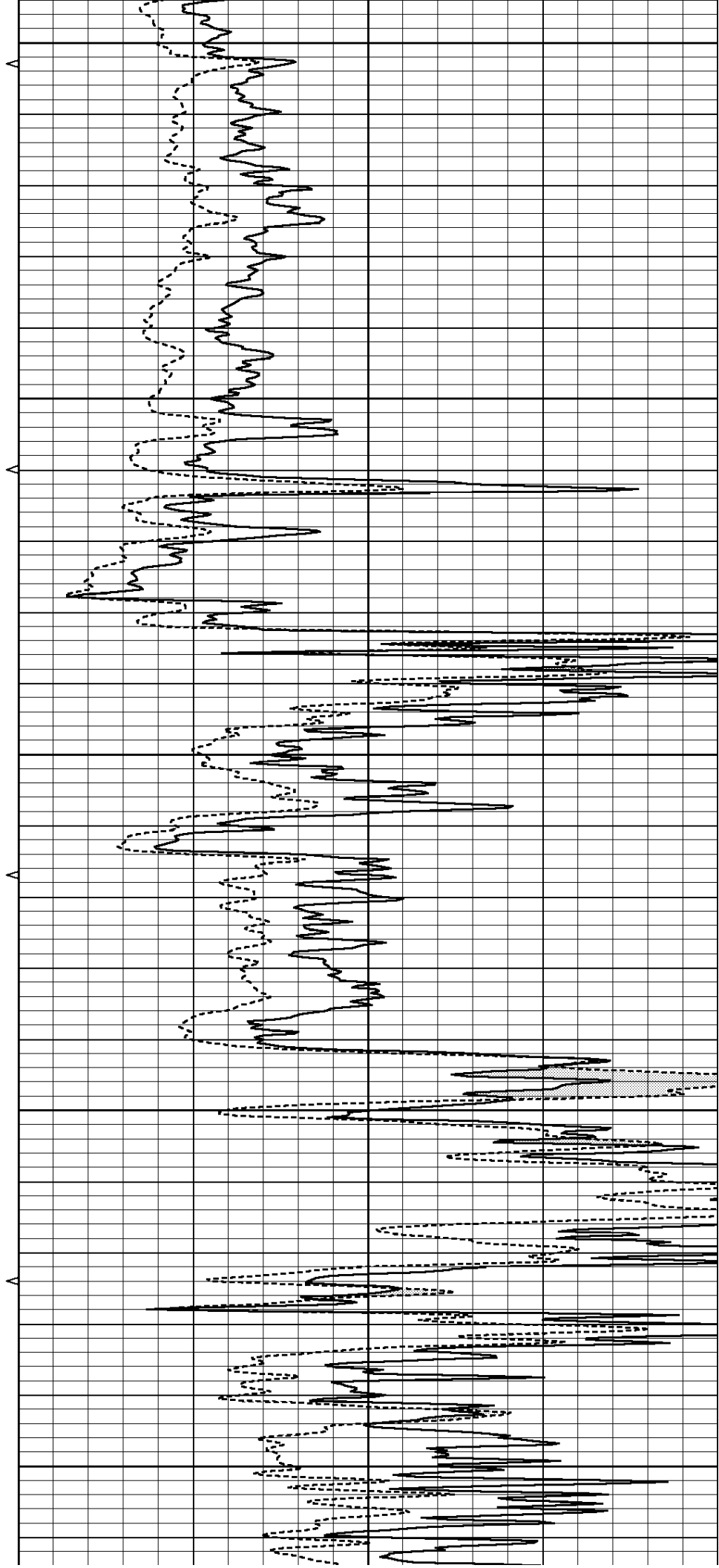
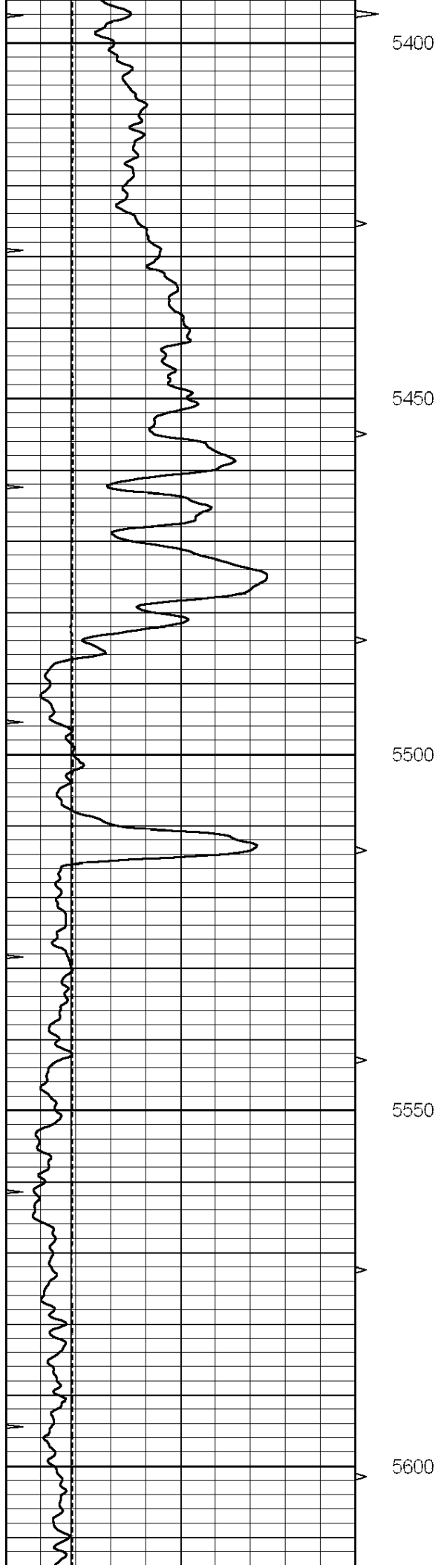
5200

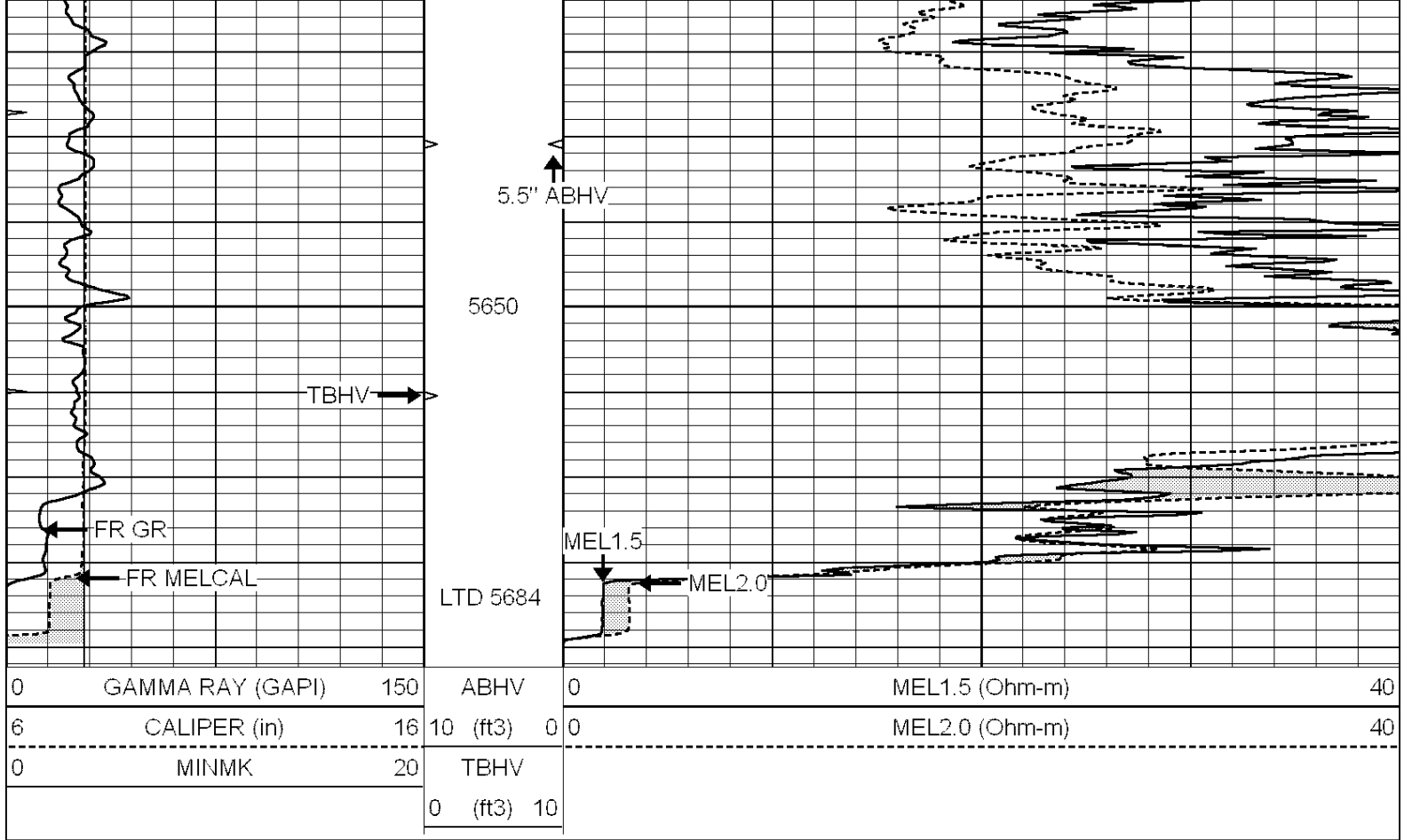
5250

5300

5350



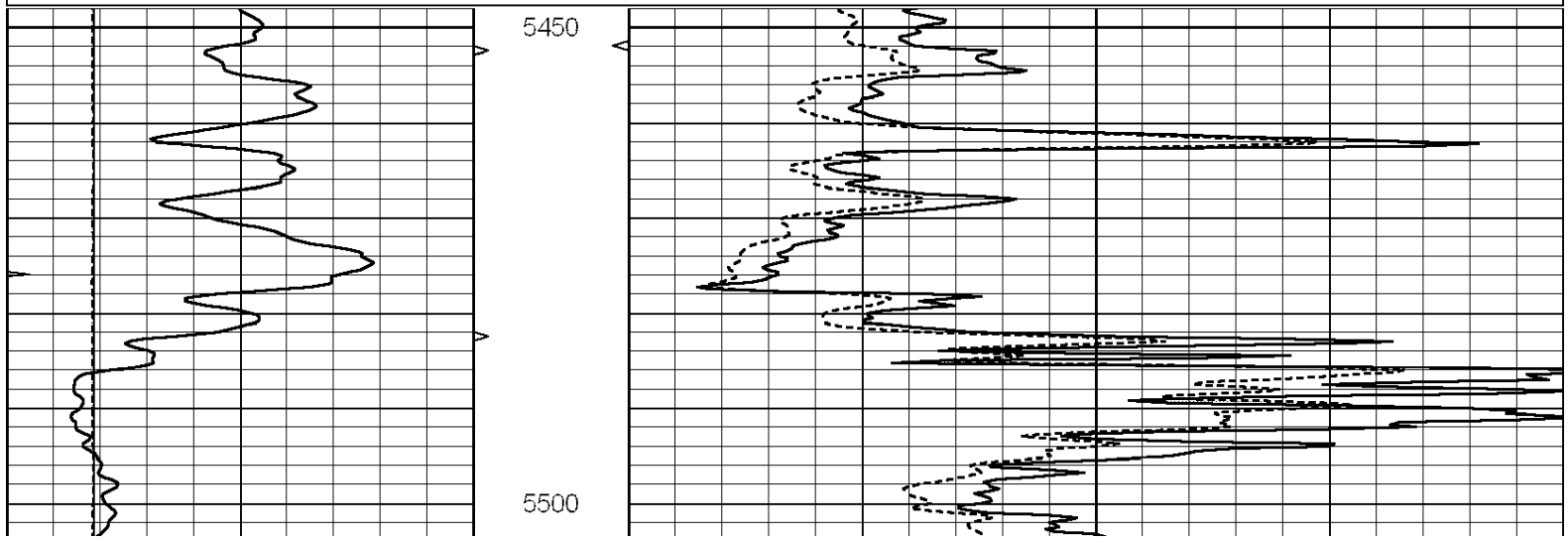


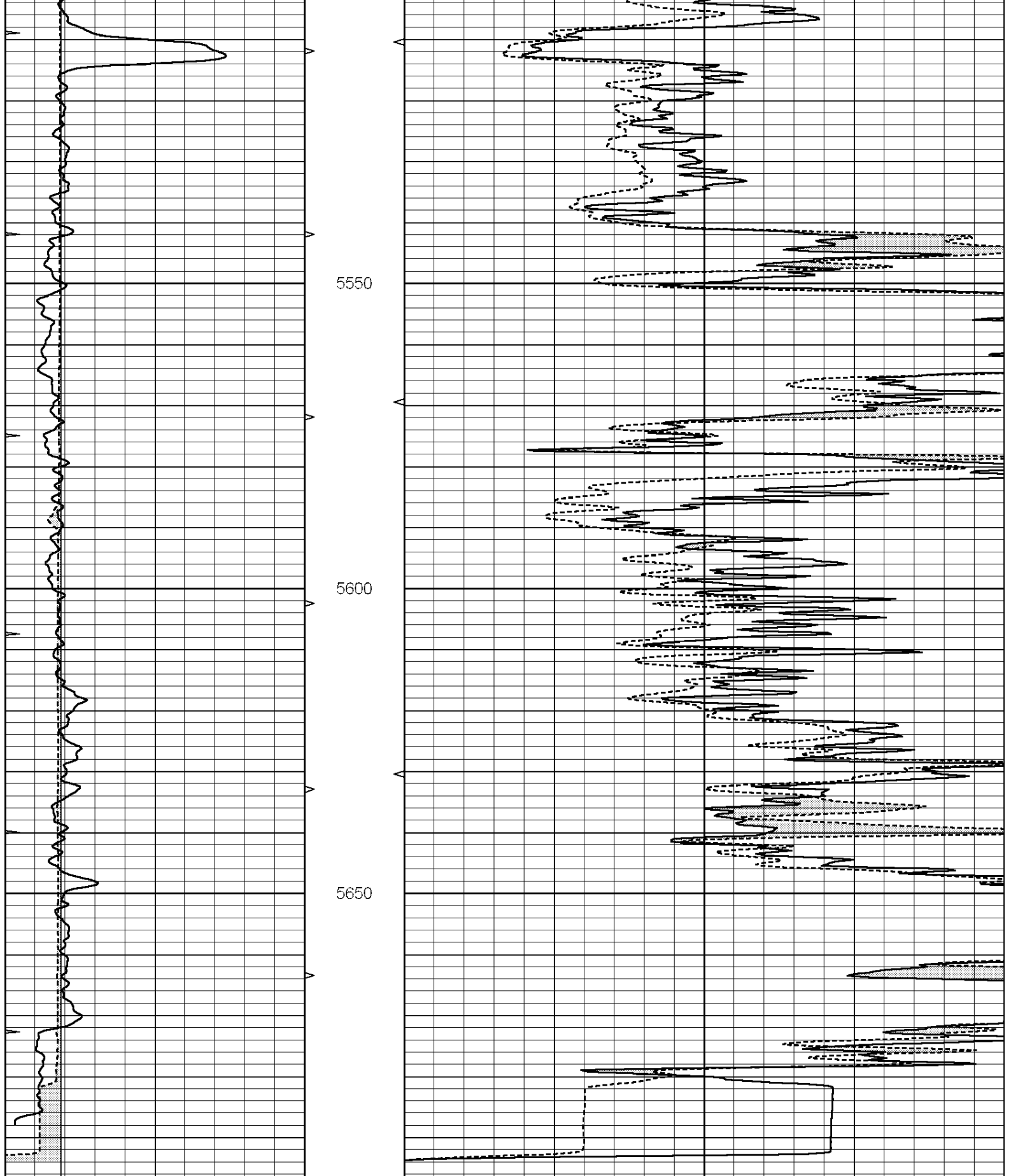


REPEAT SECTION

Database File: 22245pe.db
 Dataset Pathname: pass5.1
 Presentation Format: micro
 Dataset Creation: Wed Jan 29 22:16:00 2014 by Calc SOC 120430
 Charted by: Depth in Feet scaled 1:240

0	GAMMA RAY (GAPI)	150	ABHV	0	MEL1.5 (Ohm-m)	40
6	CALIPER (in)	16	10 (ft3)	0 0	MEL2.0 (Ohm-m)	40
0	MINMK	20	TBHV			
			0 (ft3)	10		





0	GAMMA RAY (GAPI)	150	ABHV	0	MEL1.5 (Ohm-m)	40
6	CALIPER (in)	16	10 (ft3)	0 0	MEL2.0 (Ohm-m)	40
0	MINMK	20	TBHV			
			0 (ft3)	10		

Calibration Report

Database File: 22245pe.db
 Dataset Pathname: pass7.2
 Dataset Creation: Wed Jan 29 23:18:25 2014 by Calc SOC 120430

MICRO Calibration Report

Serial Number: 070910
 Tool Model: ProbeN
 Performed: Thu Jan 23 15:26:53 2014

Caliper Calibration:	Gain=4.208	Offset=1.270
	Low Cal	High Cal
References	7.800	15.000
Readings	1.552	3.263

1.5" Calibration:	Gain=26.000	Offset=0.000
	Low Cal	High Cal
References	0.000	20.000
Readings	0.001	1.229

2" Calibration:	Gain=45.000	Offset=-0.800
	Low Cal	High Cal
References	0.000	20.000
Readings	0.004	1.057

Gamma Ray Calibration Report

Serial Number: 080328
 Tool Model: Probe1
 Performed: Wed Jan 29 23:13:41 2014

Calibrator Value:	1.0	GAPI
Background Reading:	0.0	cps
Calibrator Reading:	1.0	cps
Sensitivity:	0.2200	GAPI/cps