



**GAMMA RAY
NEUTRON
COMPLETION LOG**

Company **N & W ENTERPRISES, INC.**
 Well **GIEFER #INJ 21**
 Field **WALNUT SE**
 County **CRAWFORD** State **KANSAS**

Location: **SEC 34 TWP 28S RGE 22E**
 2310' FSL & 3795' FEL
 W/2 NW NE SW

Date **4-4-14**
 Run Number **1 NW**
 Depth Driller **430'**
 Depth Logger **408.8'**
 Top Log Interval **0**
 Bottom Logged Interval **408.8'**
 Fluid Level **FULL**
 Type Fluid **WATER**
 Production Casing **2 7/8" @ TD**
 Max. Recorded Temp
 Estimated Cement Top
 Calculated Cement Top
 Amount & Type Cement
 Amount & Type Admix
 Drilling Contractor
 Equipment Number **103**
 Location **SLOMON, B.**
 Recorded By **NORRIS, T.**
 Witnessed By

<<< Fold Here >>>

All interpretations are opinions based on inferences from electrical or other measurements and we cannot and do not guarantee the accuracy or correctness of any interpretation, and we shall not, except in the case of gross or willful negligence on our part, be liable or responsible for any loss, costs, damages, or expenses incurred or sustained by anyone resulting from any interpretation made by any of our officers, agents or employees. These interpretations are also subject to our general terms and conditions set out in our current Price Schedule.

Comments

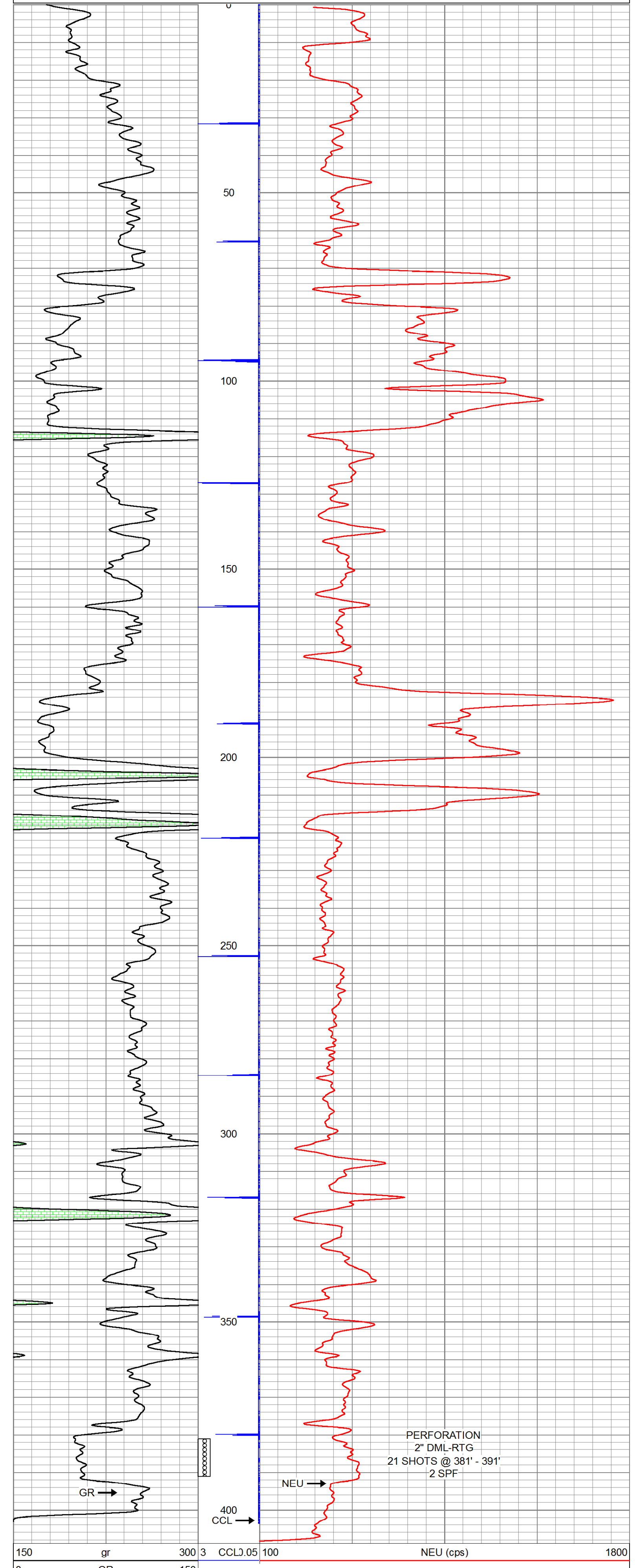
THANK YOU

Sensor	Offset (ft)	Schematic	Description	Len (ft)	OD (in)	Wt (lb)
GR	7.59		GR-TITAN_169 (TIT169_001) Titan 1 11/16" Gamma Ray	4.75	1.69	20.00
CCL	5.05		CCL-TITAN_169 (TIT169) Titan 1 11/16" Logging CCL	1.83	1.69	7.50
NEU	0.63		NEU-TITAN (TIT801) TITAN 1 11/16" Neutron	4.33	1.69	25.00

Dataset: giefer #inj 21.db: field/well/run1/pass2
 Total Length: 10.92 ft
 Total Weight: 52.50 lb
 O.D.: 1.69 in

Database File: e:\giefer #inj 21.db
 Dataset Pathname: pass2
 Presentation Format: gr-n-ccl
 Dataset Creation: Fri Apr 04 13:50:11 2014 by Log Std Casedhole 09061
 Charted by: Depth in Feet scaled 1:240

150	gr	300	3	CCLJ.05	100	NEU (cps)	1800
0	GR	150					



150	gr	300	3	CCLJ.05	100	NEU (cps)	1800
0	GR	150					