



Pioneer Energy Services

Microresistivity Log

15-163-24195-00-00

API No.

Company **Venture Resources, Inc.**

Well **Hahn #5**

Field **Bemis-Shutts**

County **Rooks** State

Kansas

Location **1800' FSL & 1988' FEL**

Other Services
CNL/CDL
DIL

Sec: **31** Twp: **10S** Rge: **17W**

Permanent Datum **Ground Level** Elevation **2068**

Log Measured From **Kelly Bushing** **7** Ft. Above Perm. Datum

Elevation
K.B. 2075
D.F.
G.L. 2068

Drilling Measured From **Kelly Bushing**

Date **4/2/2014**

Run Number **Two**

Depth Driller **3630**

Depth Logger **3627**

Bottom Logged Interval **3626**

Top Log Interval **2900**

Casing Driller **8.625 @ 1346**

Casing Logger **1345**

Bit Size **7.875**

Type Fluid in Hole **Chemical**

Salinity, ppm CL **5000**

Density / Viscosity **9.2 60**

pH / Fluid Loss **10.5 7.2**

Source of Sample **Flowline**

Rm @ Meas. Temp **0.50 @ 54**

Rmf @ Meas. Temp **0.38 @ 54**

Rmc @ Meas. Temp **0.68 @ 54**

Source of Rmf / Rmc **Charts**

Rm @ BHT **0.24 @ 114**

Operating Rig Time **4 Hours**

Max Rec. Temp. F **114**

Equipment Number **91**

Location **Hays**

Recorded By **D. Schmidt**

Witnessed By **Brad Rine**

<<< Fold Here >>>

All interpretations are opinions based on inferences from electrical or other measurements and we cannot and do not guarantee the accuracy or correctness of any interpretation, and we shall not, except in the case of gross or willful negligence on our part, be liable or responsible for any loss, costs, damages, or expenses incurred or sustained by anyone resulting from any interpretation made by any of our officers, agents or employees. These interpretations are also subject to our general terms and conditions set out in our current Price Schedule.

Comments

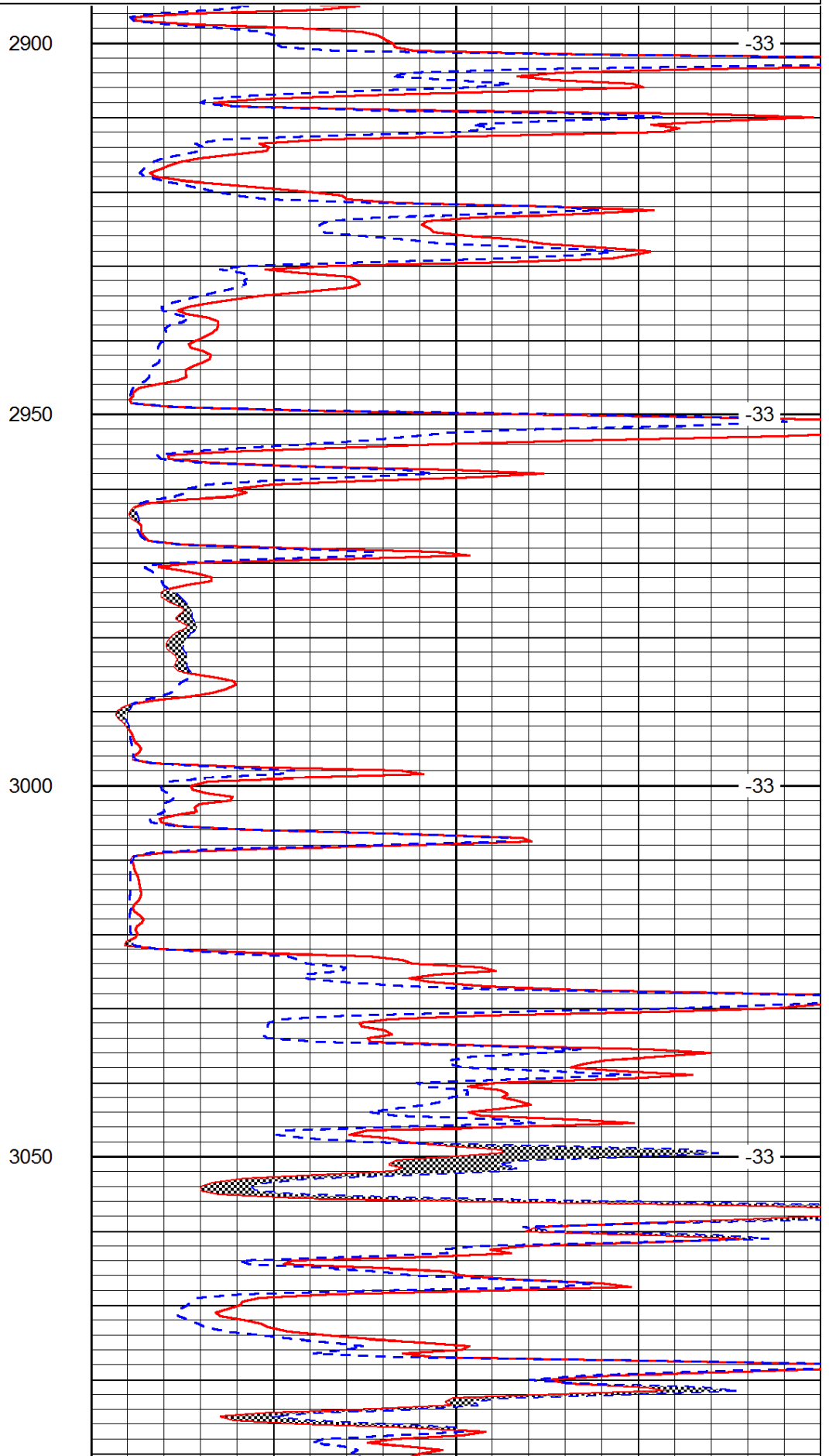
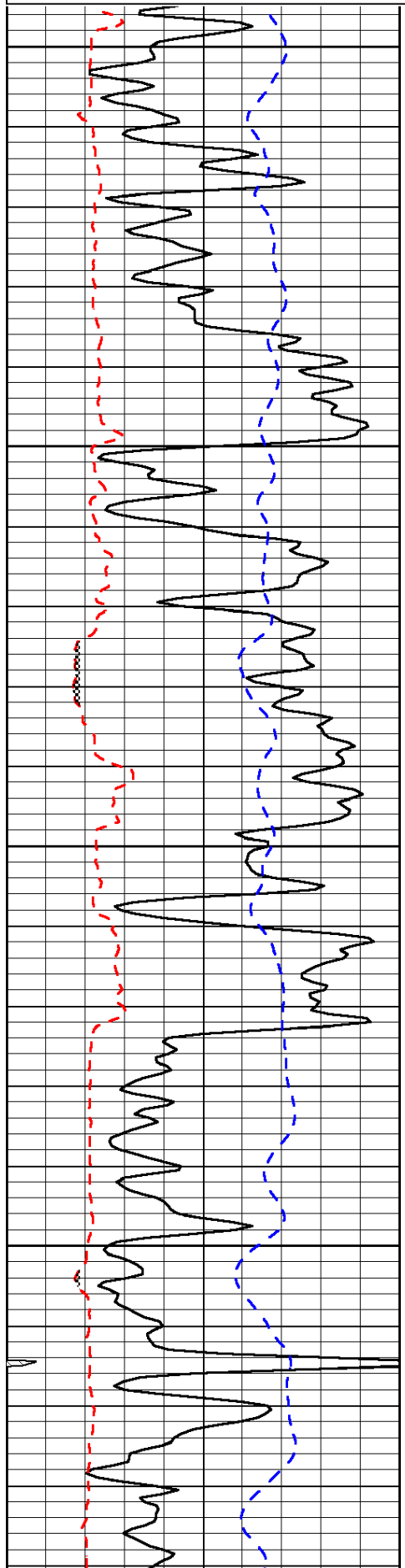
Thank you for using Pioneer Energy Services
www.pioneerenergy.com
 785 625 3858
 Plainville,
 South to CC Rd, 1 1/2 East to 19 Rd,
 1 South to CG, East & South to location

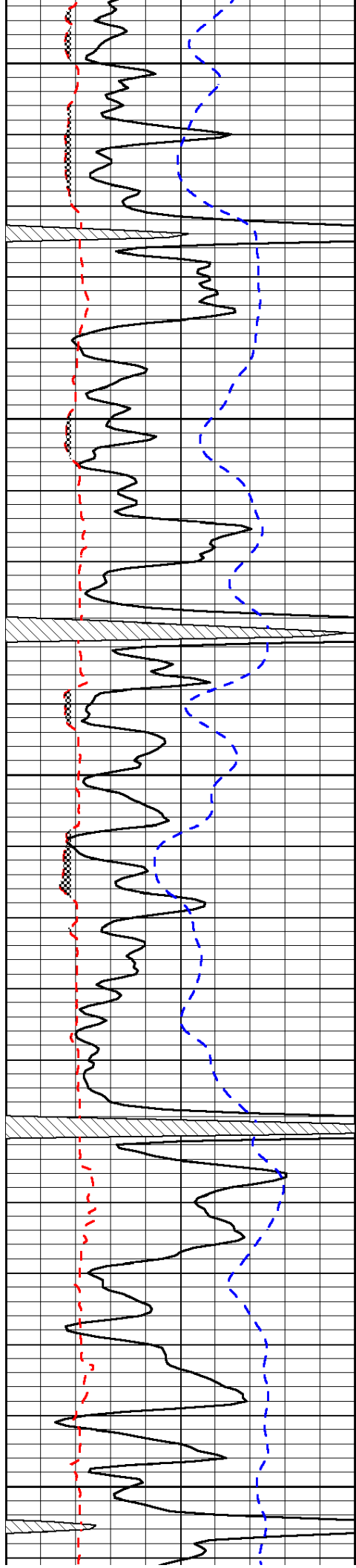
Database File: c:\warrior\data\venture_hahn #5\venture_040214hd.db
 Dataset Pathname: dil\vrstckml
 Presentation Format: micro
 Dataset Creation: Wed Apr 02 23:27:22 2014
 Charted by: Depth in Feet scaled 1:240

0	Gamma Ray	150
6	Micro Log Caliper (GAPI)	16
-200	SP (mV)	0

0	Micro Inverse 1 X 1	40
0	Micro Normal 2"	40
15000	Line Weight	0

LSPD





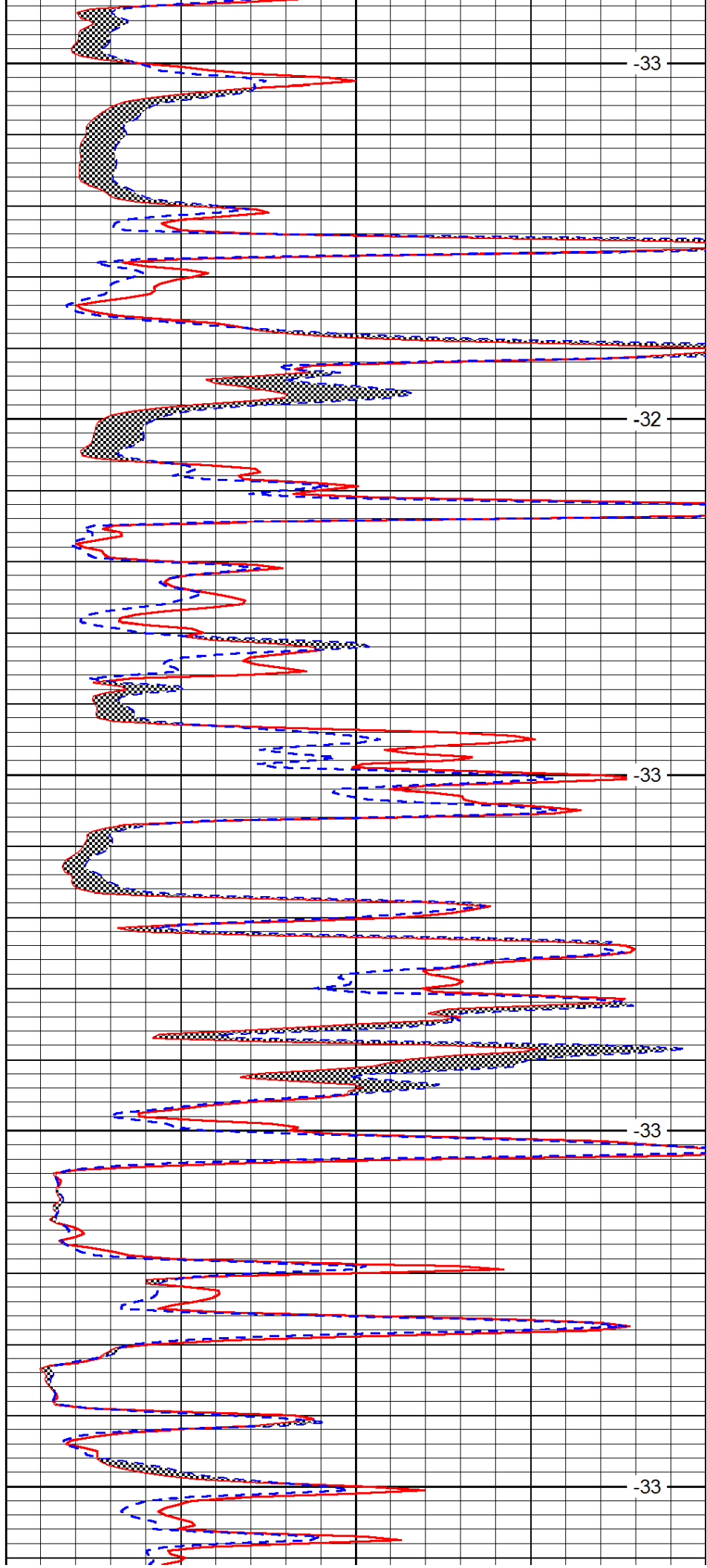
3100

3150

3200

3250

3300



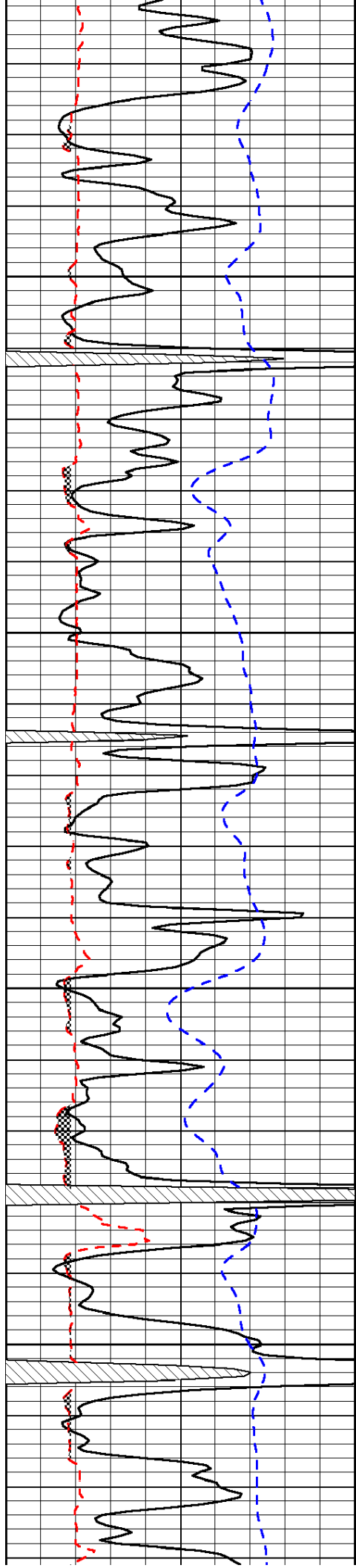
-33

-32

-33

-33

-33

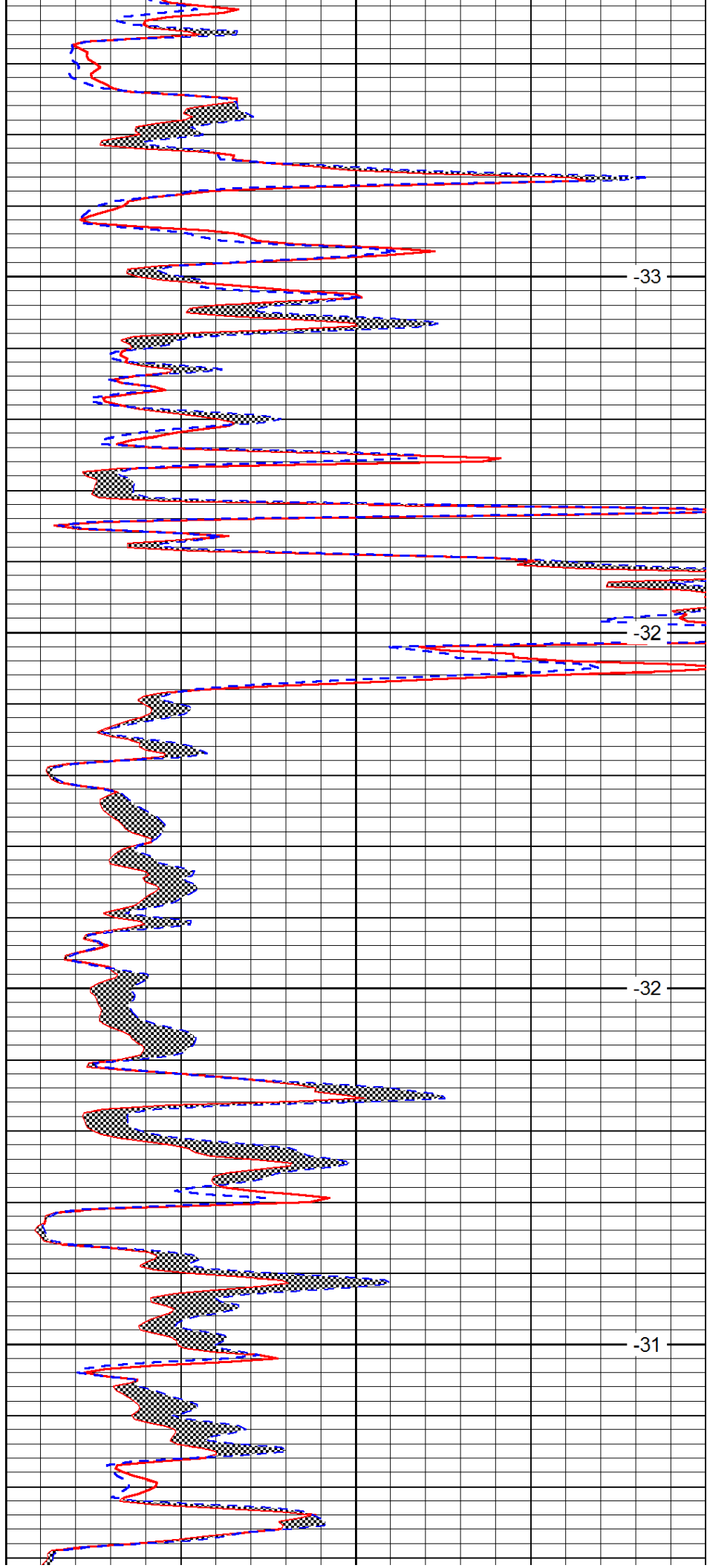


3350

3400

3450

3500

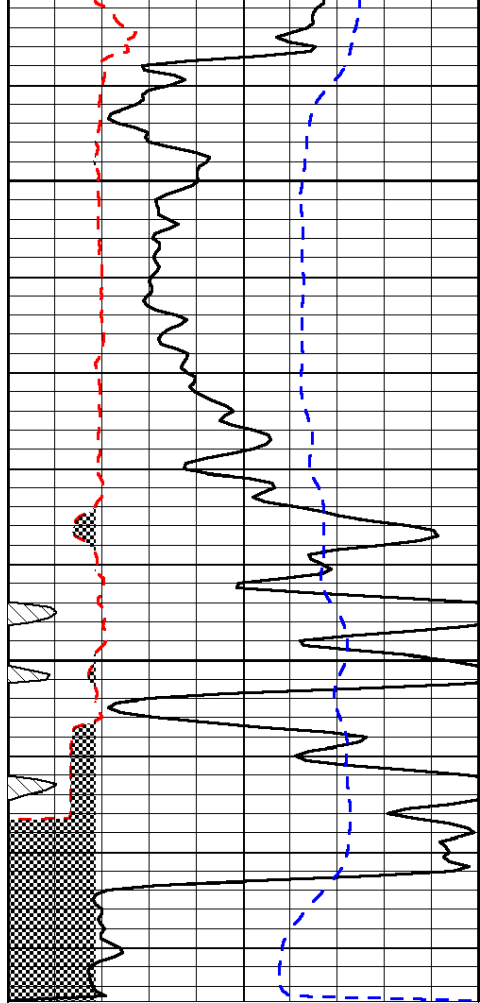


-33

-32

-32

-31



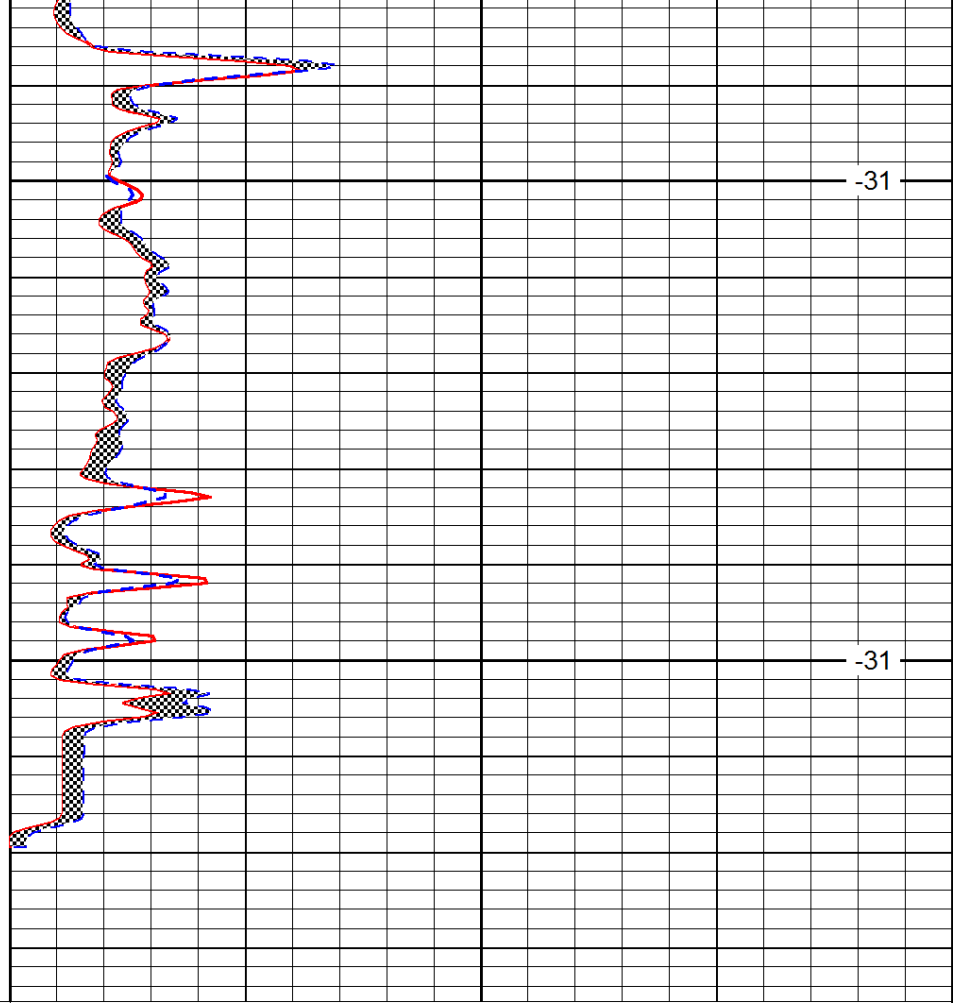
0	Gamma Ray	150
6	Micro Log Caliper (GAPI)	16
-200	SP (mV)	0

3550

-31

3600

-31



0	Micro Inverse 1 X 1	40
0	Micro Normal 2"	40
15000	Line Weight	0

LSPD