



Pioneer Energy Services

## Dual Compensated Porosity Log

15-163-24195-00-00

API No.

Company **Venture Resources, Inc.**

Well **Hahn #5**

Field **Bemis-Shutts**

County **Rooks**

State **Kansas**

Location

1800' FSL & 1988' FEL

Sec: 31 Twp: 10S Rge: 17W

Other Services  
DIL  
MEL

Elevation 2068

K.B. 2075  
D.F.  
G.L. 2068

Permanent Datum Ground Level  
Log Measured From Kelly Bushing 7 Ft. Above Perm. Datum  
Drilling Measured From Kelly Bushing

Date 4/2/2014

Run Number One

Type Log CNL / CDL

Depth Driller 3630

Depth Logger 3627

Bottom Logged Interval 3606

Top Logged Interval 2900

Type Fluid In Hole Chemical

Salinity, PPM CL 5000

Density 9.2

Level Full

Max. Rec. Temp. F 114

Operating Rig Time 4 Hours

Equipment -- Location 91 Hays

Recorded By D. Schmidt

Witnessed By Brad Rine

**Borehole Record**

**Casing Record**

Run No.	Bit	From	To	Size	Wgt.	From	To
1	12.25	00	1346	8.625	24#	00	1346
2	7.875	1346	3630				

<<< Fold Here >>>

All interpretations are opinions based on inferences from electrical or other measurements and we cannot and do not guarantee the accuracy or correctness of any interpretation, and we shall not, except in the case of gross or willful negligence on our part, be liable or responsible for any loss, costs, damages, or expenses incurred or sustained by anyone resulting from any interpretation made by any of our officers, agents or employees. These interpretations are also subject to our general terms and conditions set out in our current Price Schedule.

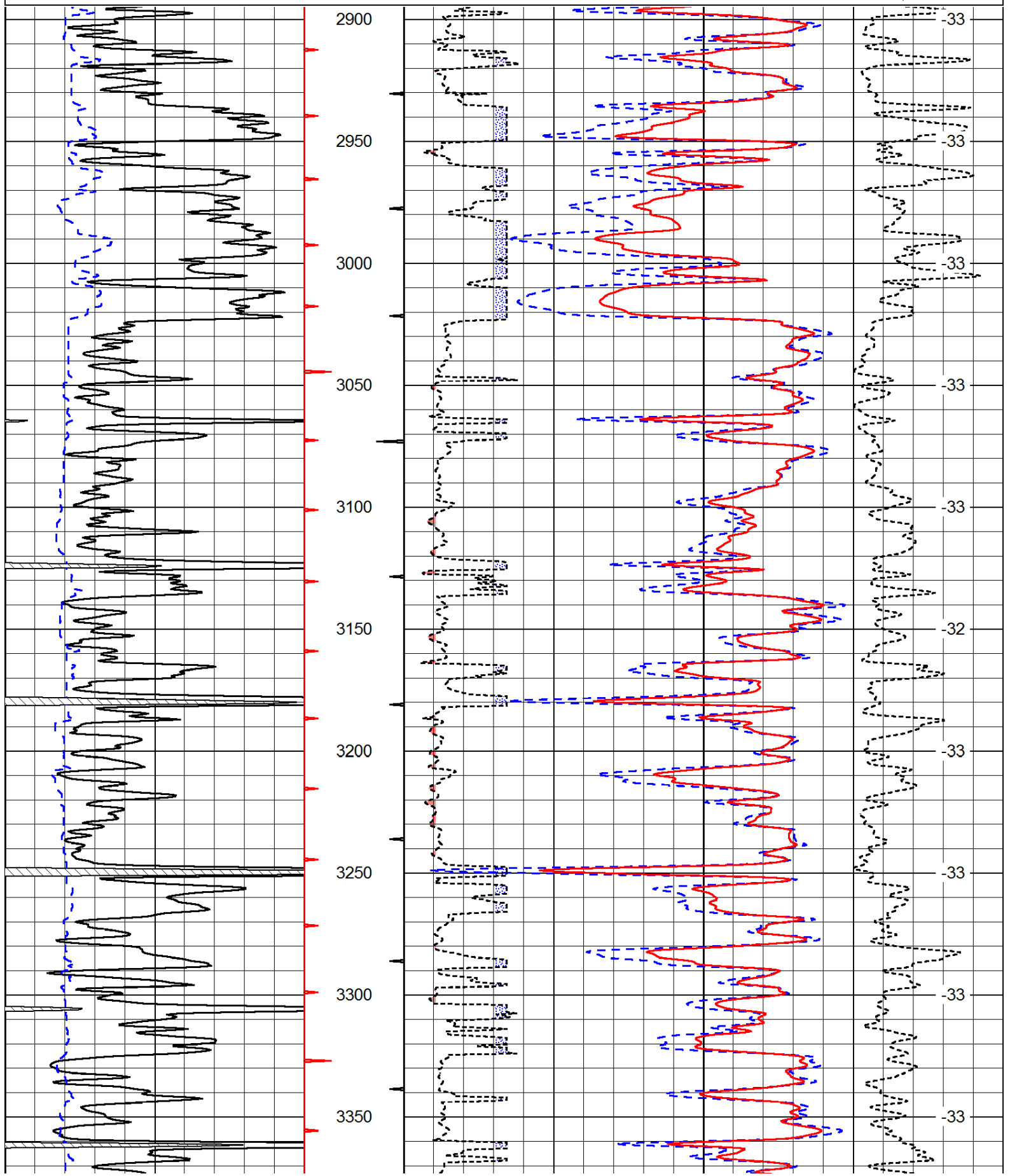
**Comments**

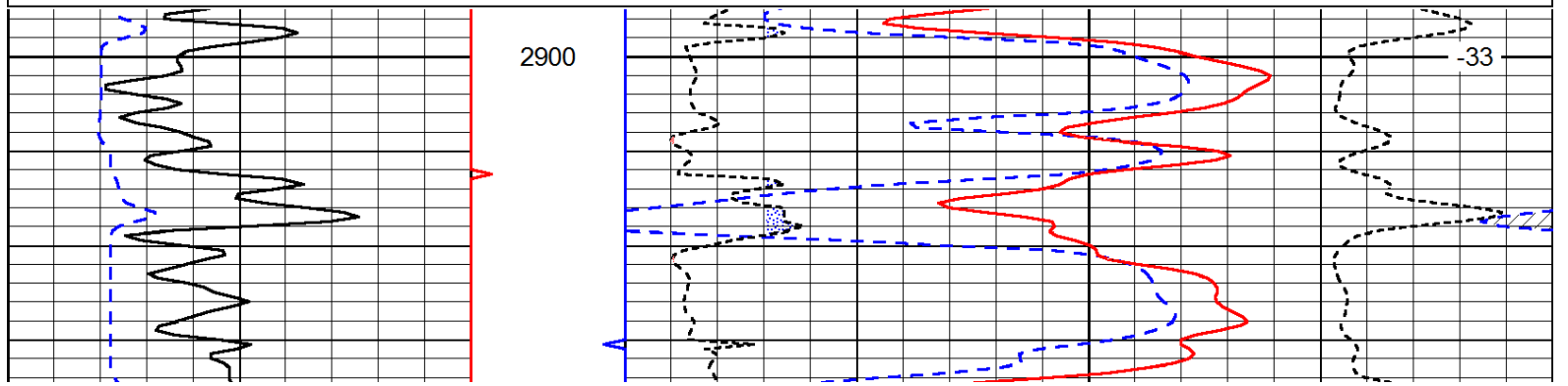
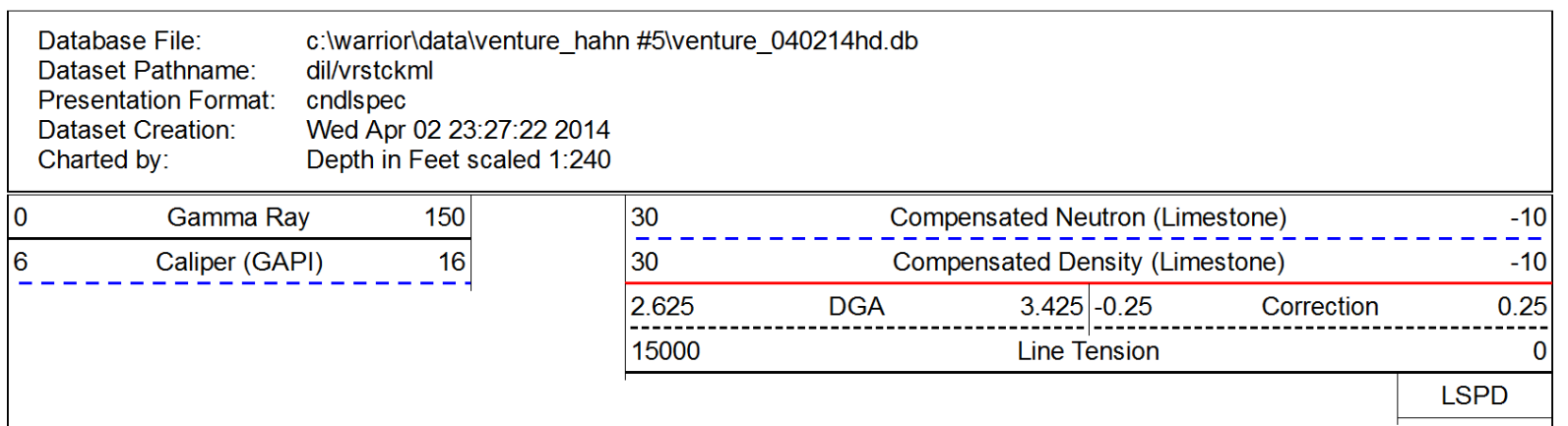
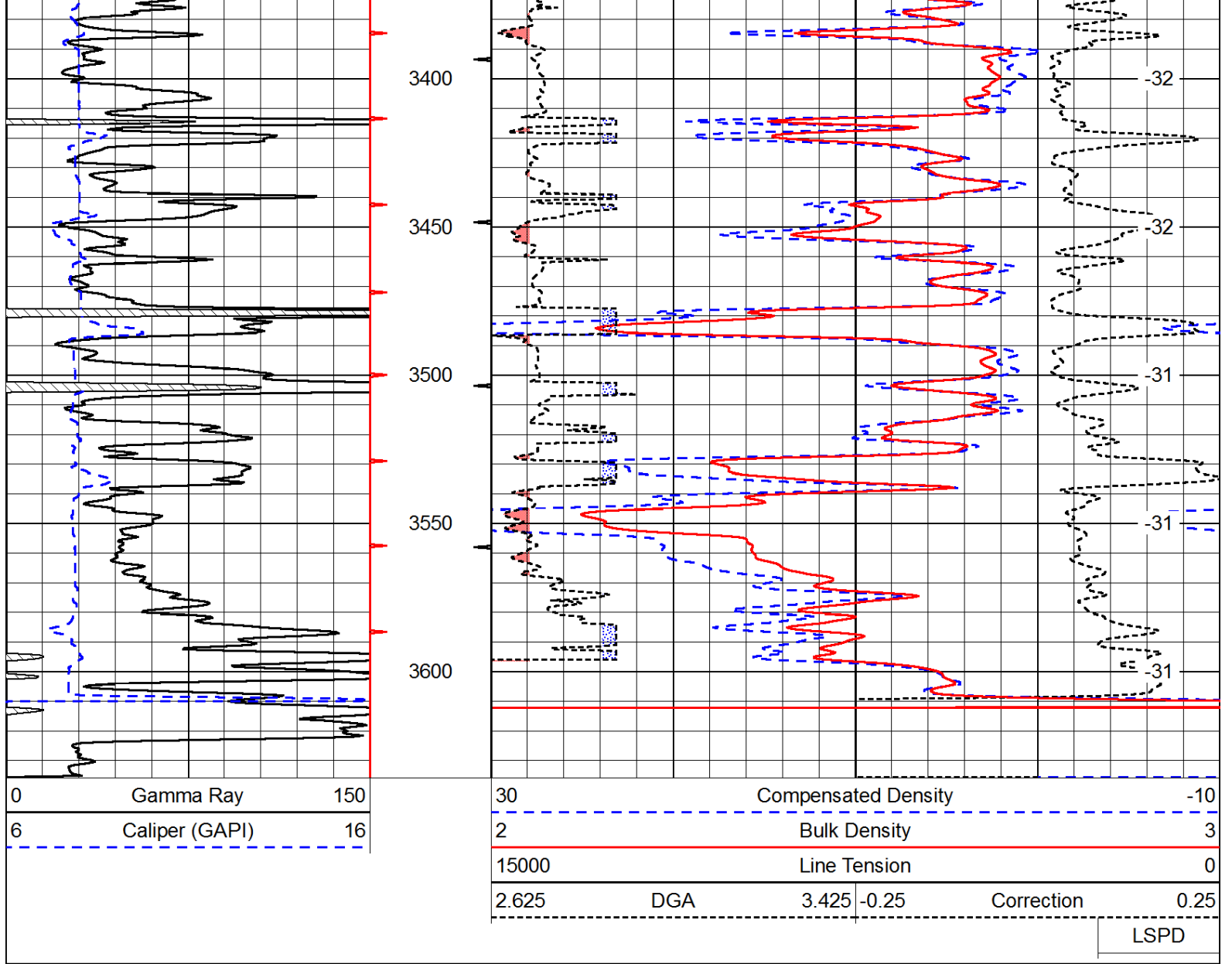
Thank you for using Pioneer Energy Services  
[www.pioneerenergy.com](http://www.pioneerenergy.com)  
 785 625 3858  
 Plainville,  
 South to CC Rd, 1 1/2 East to 19 Rd,  
 1 South to CG, East & South to location

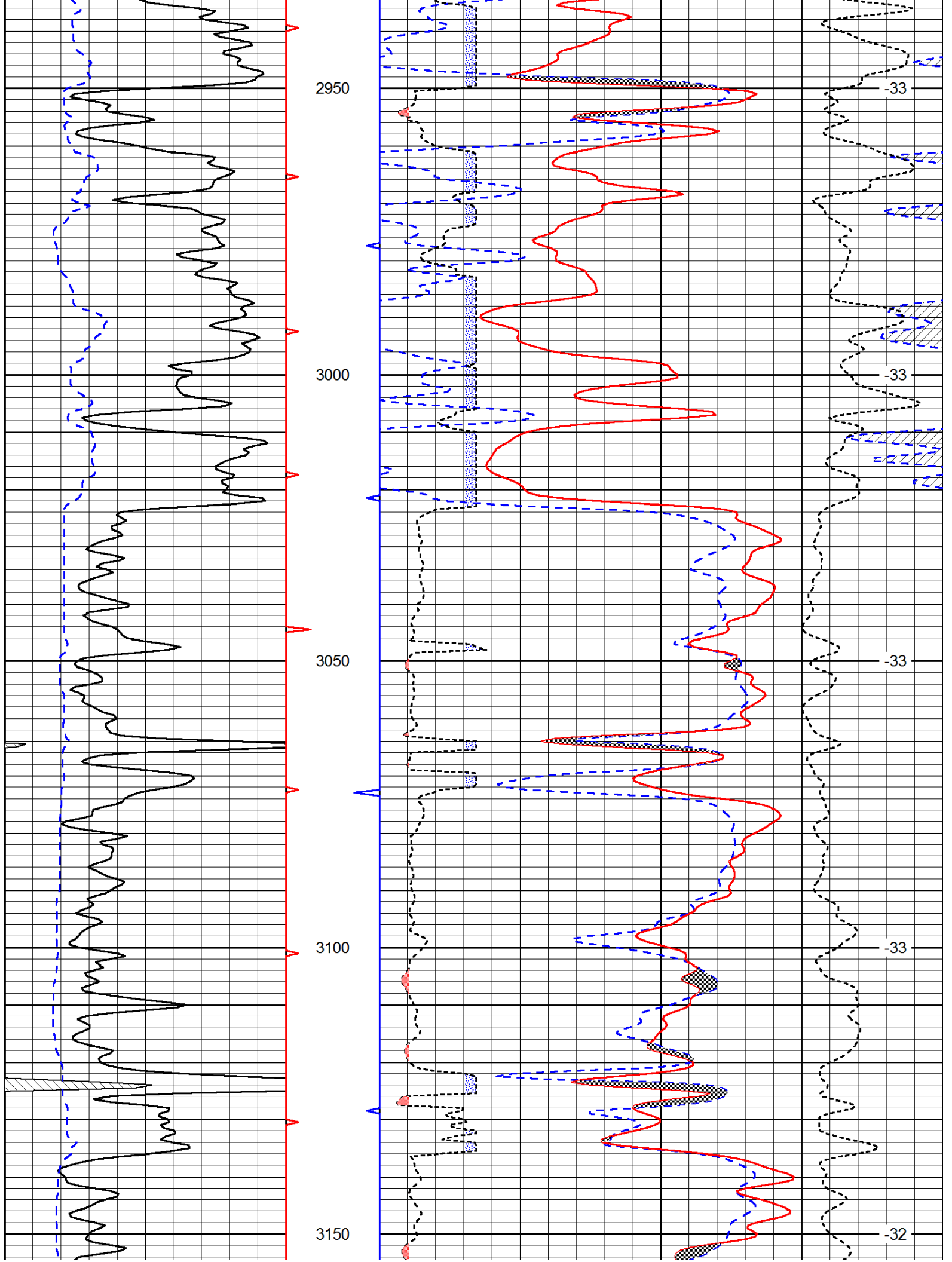
Database File: c:\warrior\data\venture\_hahn #5\venture\_040214hd.db  
 Dataset Pathname: dil/vrstckml  
 Presentation Format: cdl  
 Dataset Creation: Wed Apr 02 23:27:22 2014  
 Charted by: Depth in Feet scaled 1:600

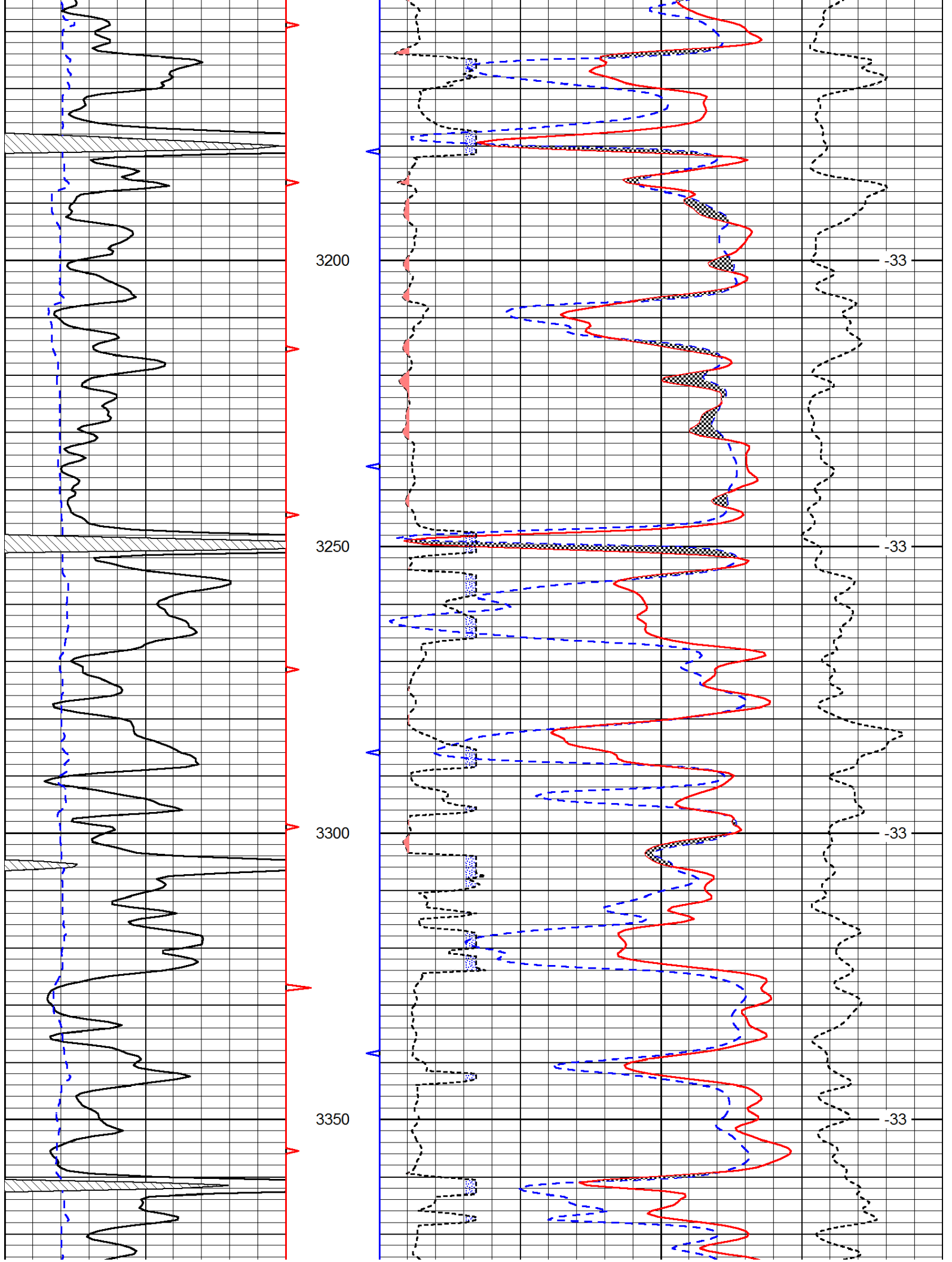
0	Gamma Ray	150
6	Caliper (GAPI)	16

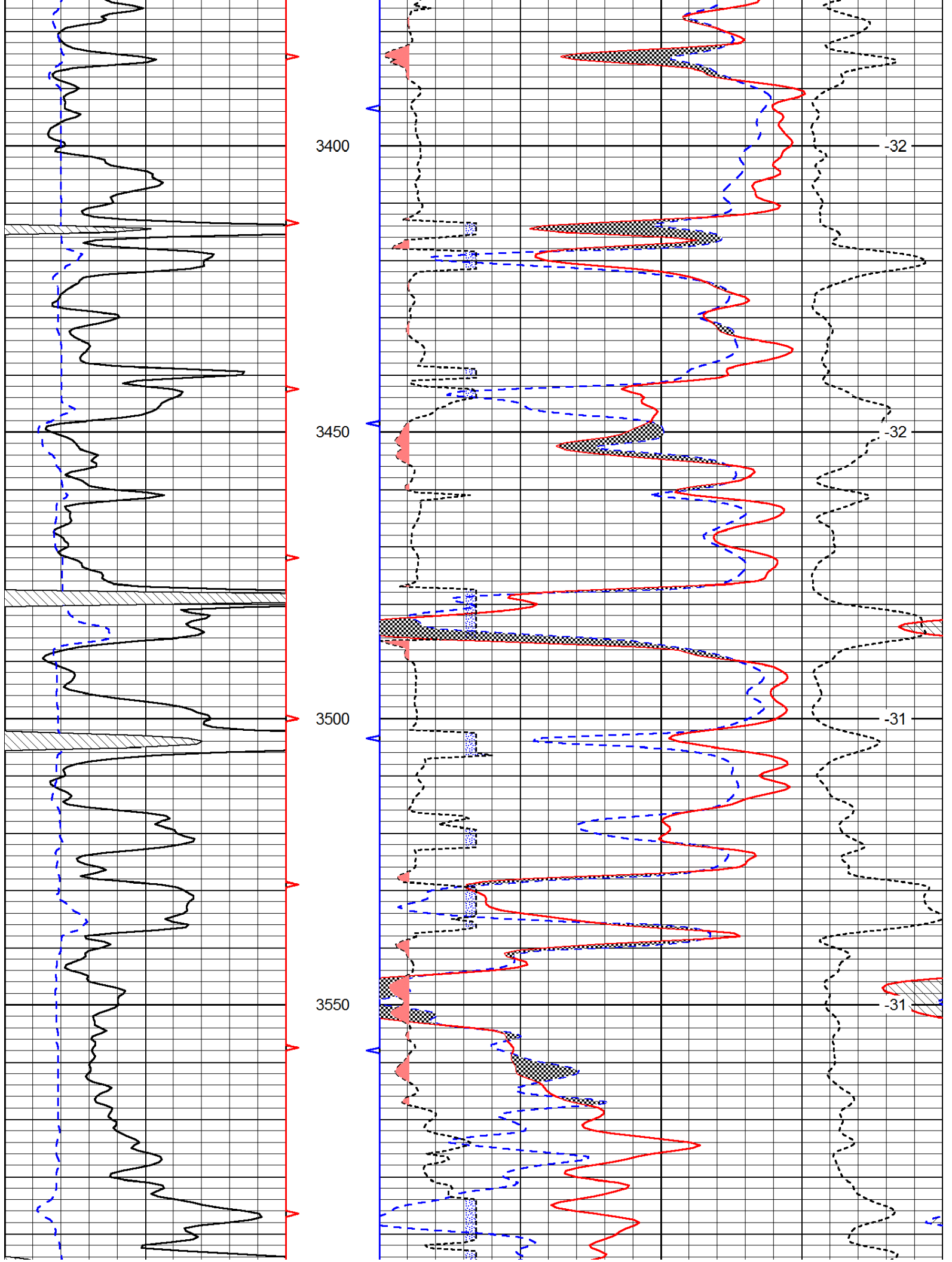
30	Compensated Density		-10
2	Bulk Density		3
15000	Line Tension		0
2.625	DGA	3.425	-0.25
		Correction	0.25
			LSPD

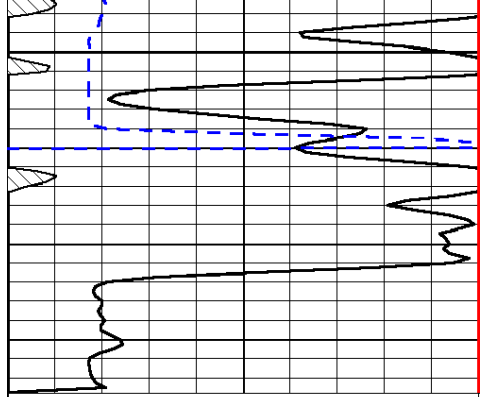




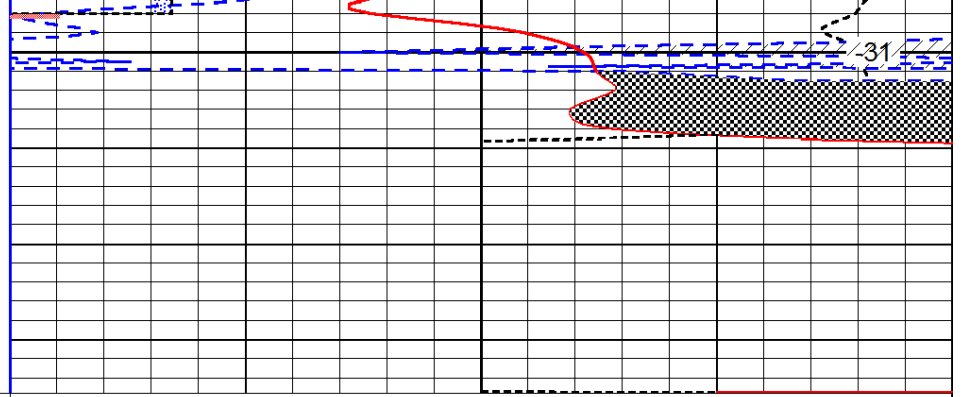








3600



0	Gamma Ray	150
6	Caliper (GAPI)	16

30	Compensated Neutron (Limestone)			-10	
30	Compensated Density (Limestone)			-10	
2.625	DGA	3.425	-0.25	Correction	0.25
15000	Line Tension			0	

LSPD