



Pioneer Energy Services

# Dual Induction Log

15-163-24195-00-00

API No.

Company **Venture Resources, Inc.**

Well **Hahn #5**

Field **Bemis-Shutts**

County **Rooks** State

**Kansas**

Location **1800' FSL & 1988' FEL**

Other Services  
CNL/CDL  
MEL

Sec: **31** Twp: **10S** Rge: **17W**

Permanent Datum **Ground Level** Elevation **2068**

Log Measured From **Kelly Bushing** **7** Ft. Above Perm. Datum

Elevation  
K.B. 2075  
D.F.  
G.L. 2068

Drilling Measured From **Kelly Bushing**

Date **4/2/2014**

Run Number **One**

Depth Driller **3630**

Depth Logger **3627**

Bottom Logged Interval **3626**

Top Log Interval **1300**

Casing Driller **8.625 @ 1346**

Casing Logger **1345**

Bit Size **7.875**

Type Fluid in Hole **Chemical**

Salinity, ppm CL **5000**

Density / Viscosity **9.2 60**

pH / Fluid Loss **10.5 7.2**

Source of Sample **Flowline**

Rm @ Meas. Temp **0.50 @ 54**

Rmf @ Meas. Temp **0.38 @ 54**

Rmc @ Meas. Temp **0.68 @ 54**

Source of Rmf / Rmc **Charts**

Rm @ BHT **0.24 @ 114**

Operating Rig Time **4 Hours**

Max Rec. Temp. F **114**

Equipment Number **91**

Location **Hays**

Recorded By **D. Schmidt**

Witnessed By **Brad Rine**

<<< Fold Here >>>

All interpretations are opinions based on inferences from electrical or other measurements and we cannot and do not guarantee the accuracy or correctness of any interpretation, and we shall not, except in the case of gross or willful negligence on our part, be liable or responsible for any loss, costs, damages, or expenses incurred or sustained by anyone resulting from any interpretation made by any of our officers, agents or employees. These interpretations are also subject to our general terms and conditions set out in our current Price Schedule.

## Comments

Thank you for using Pioneer Energy Services  
[www.pioneerenergy.com](http://www.pioneerenergy.com)  
 785 625 3858  
 Plainville,  
 South to CC Rd, 1 1/2 East to 19 Rd,  
 1 South to CG, East & South to location

Database File: c:\warrior\data\venture\_hahn #5\venture\_040214hd.db  
 Dataset Pathname: dil\vrstckml  
 Presentation Format: dil2in  
 Dataset Creation: Wed Apr 02 23:27:22 2014  
 Charted by: Depth in Feet scaled 1:600

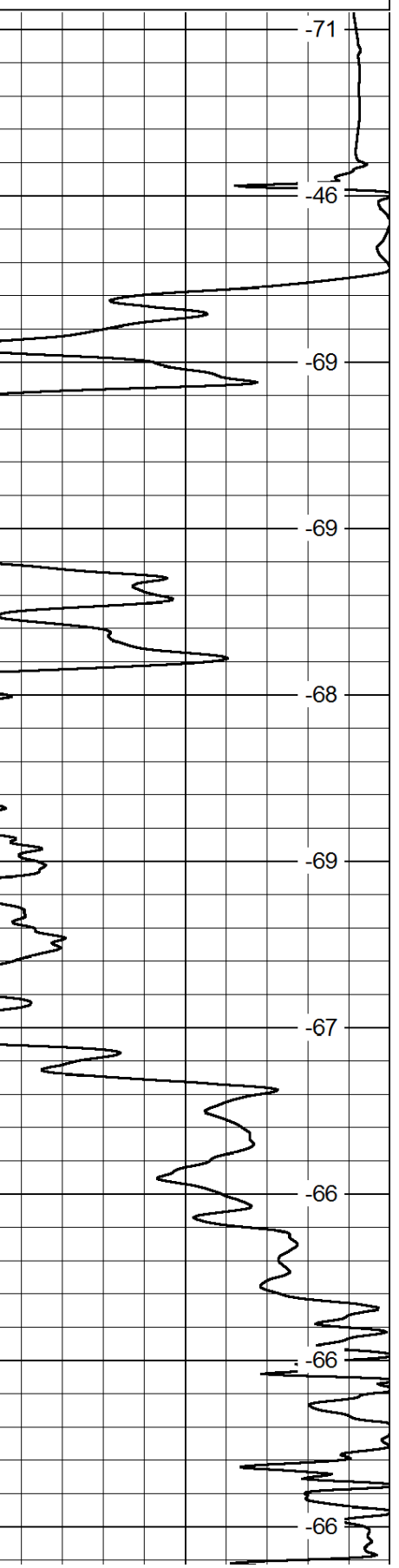
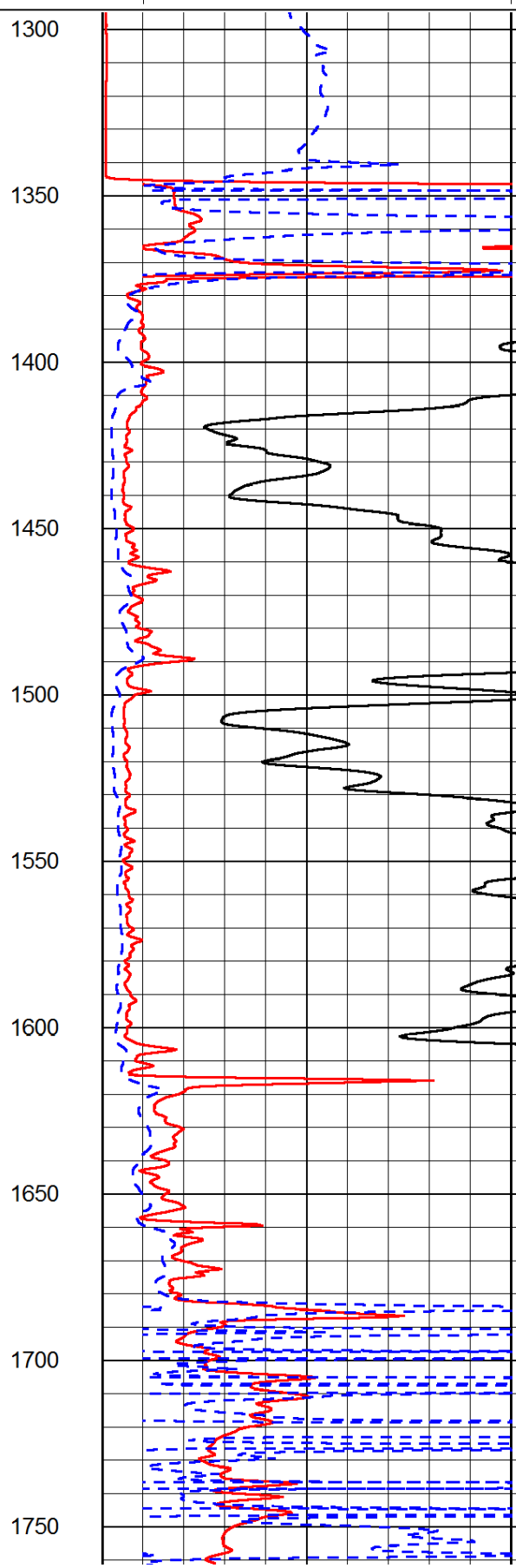
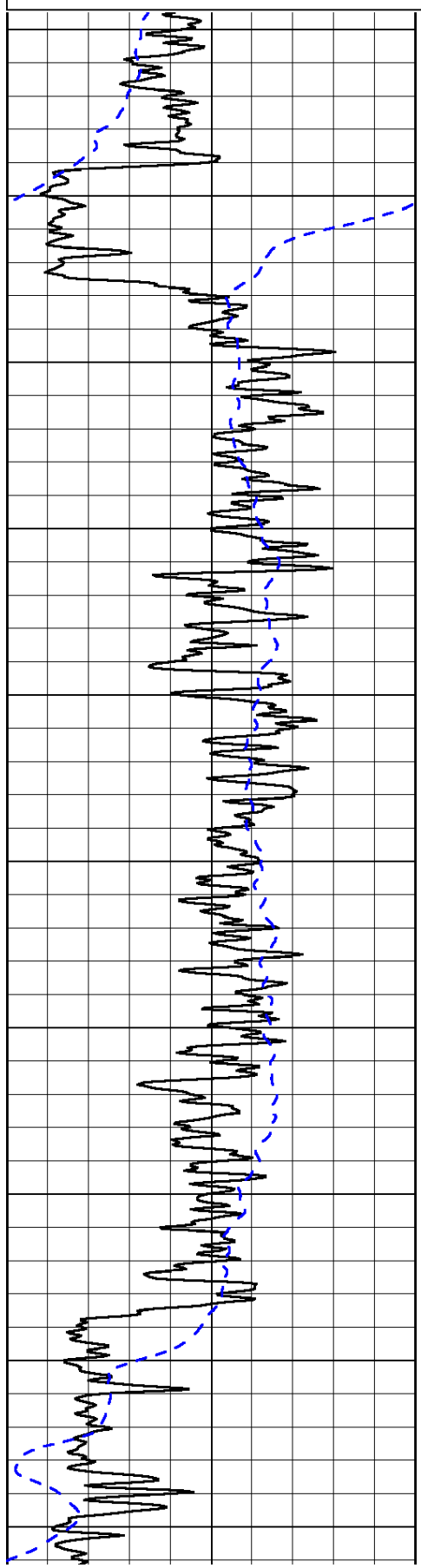
0	Gamma Ray	150
-200	SP (mV)	0

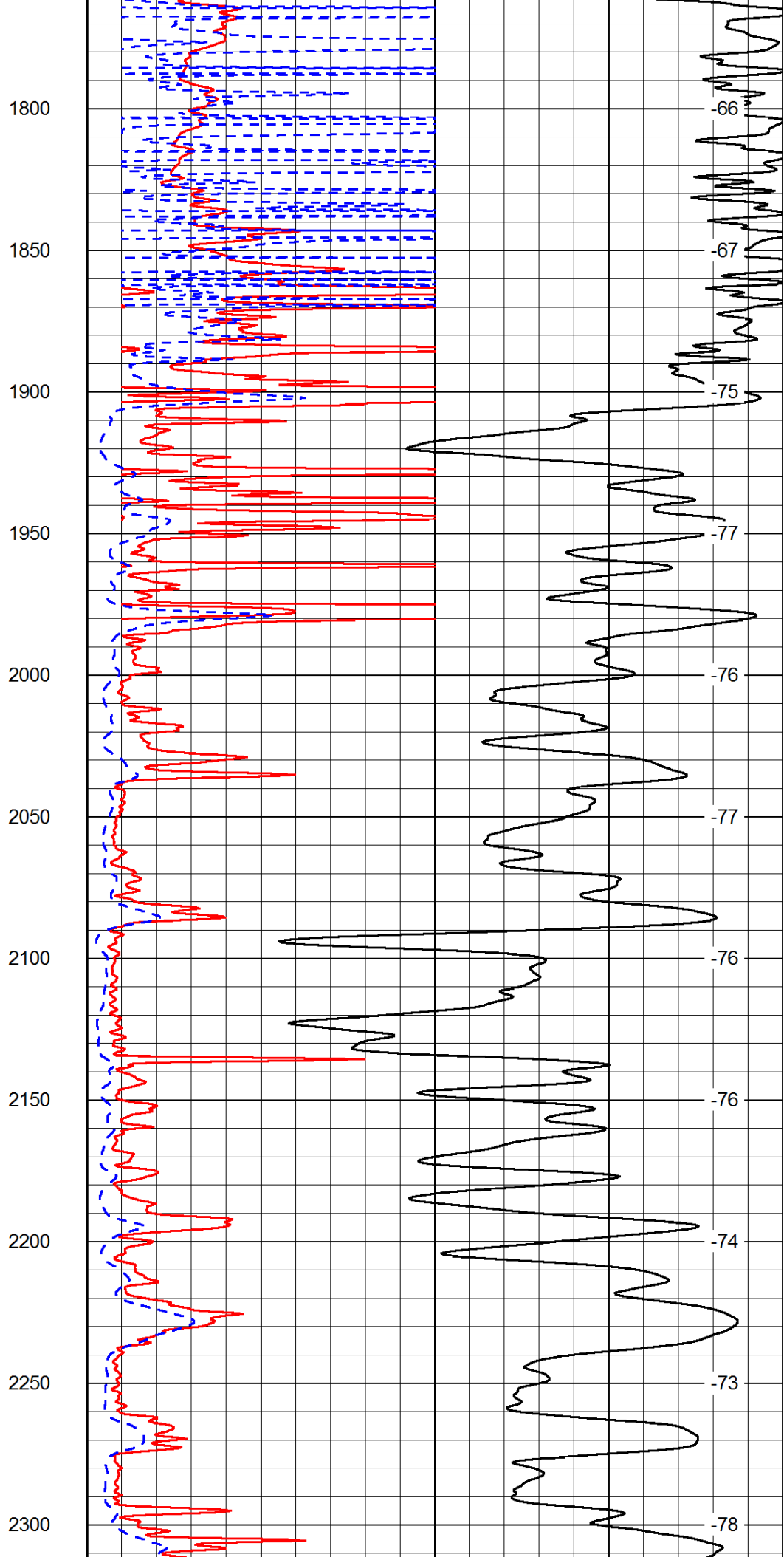
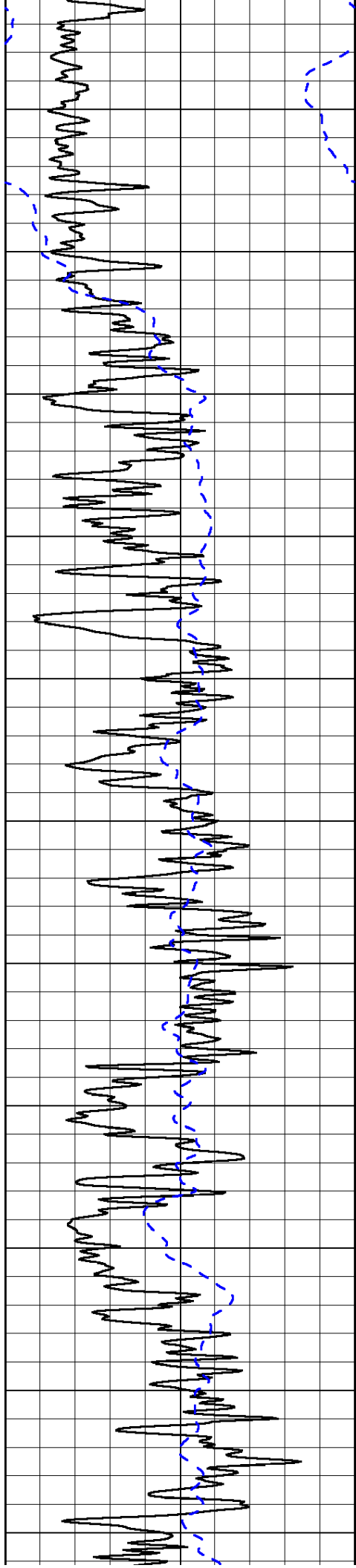
0	Shallow Resistivity	50
0	Deep Resistivity	50

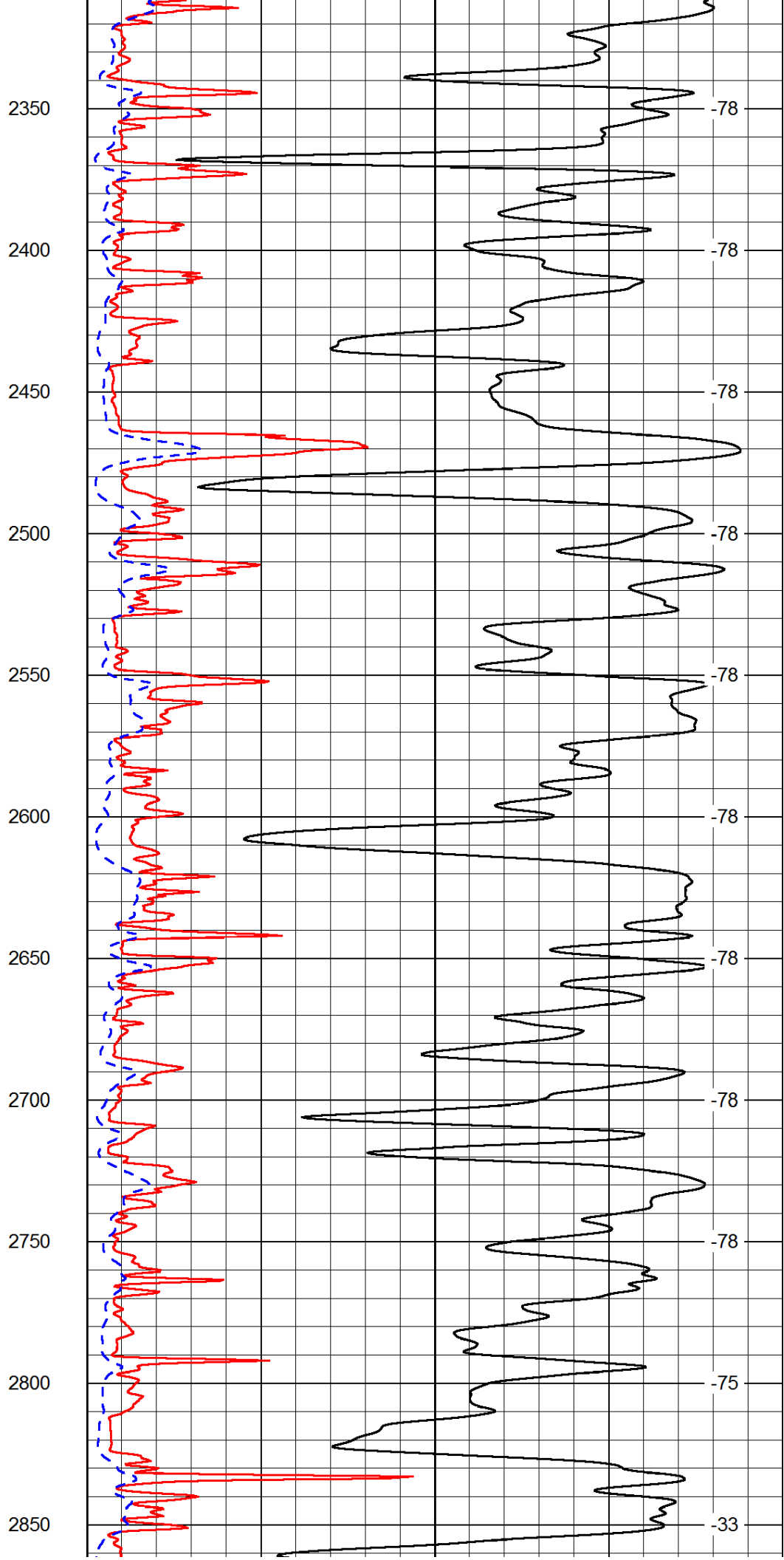
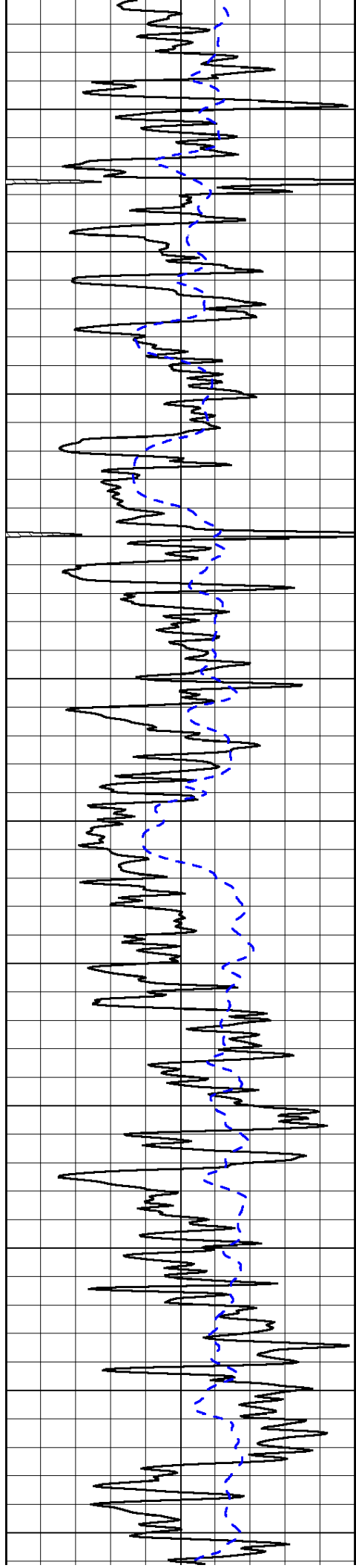
LSPD

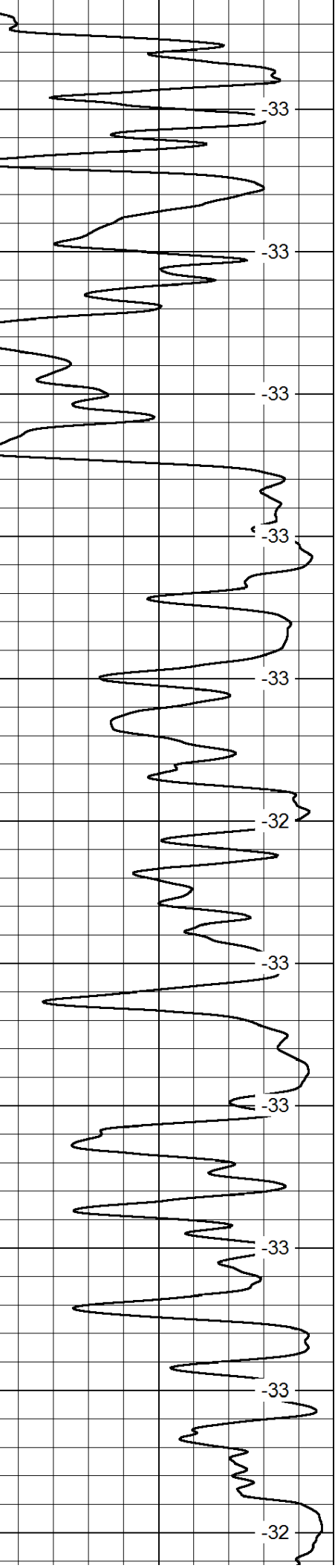
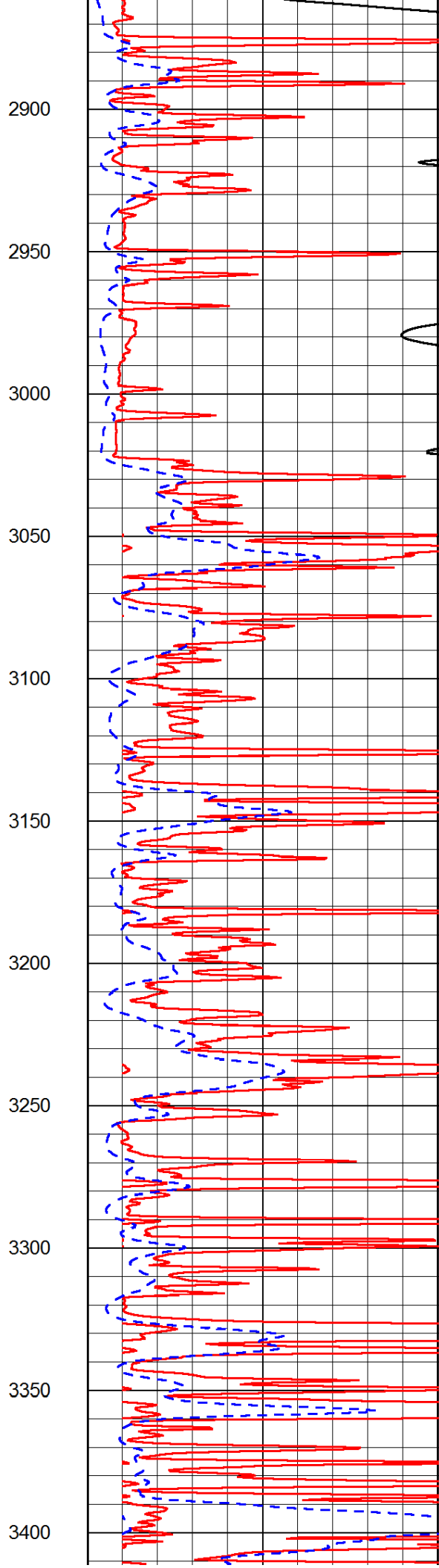
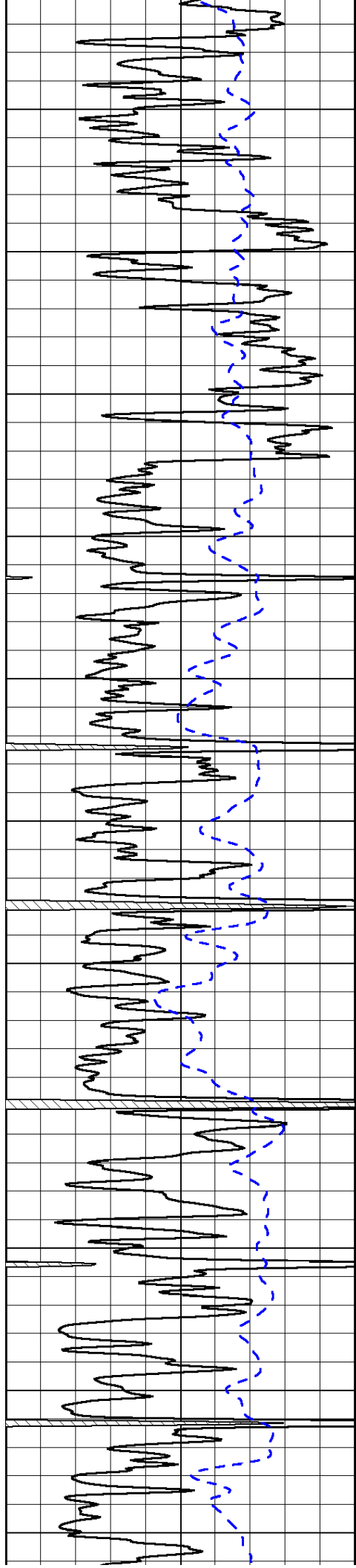
1000	Conductivity	0
15000	Line Tension	0

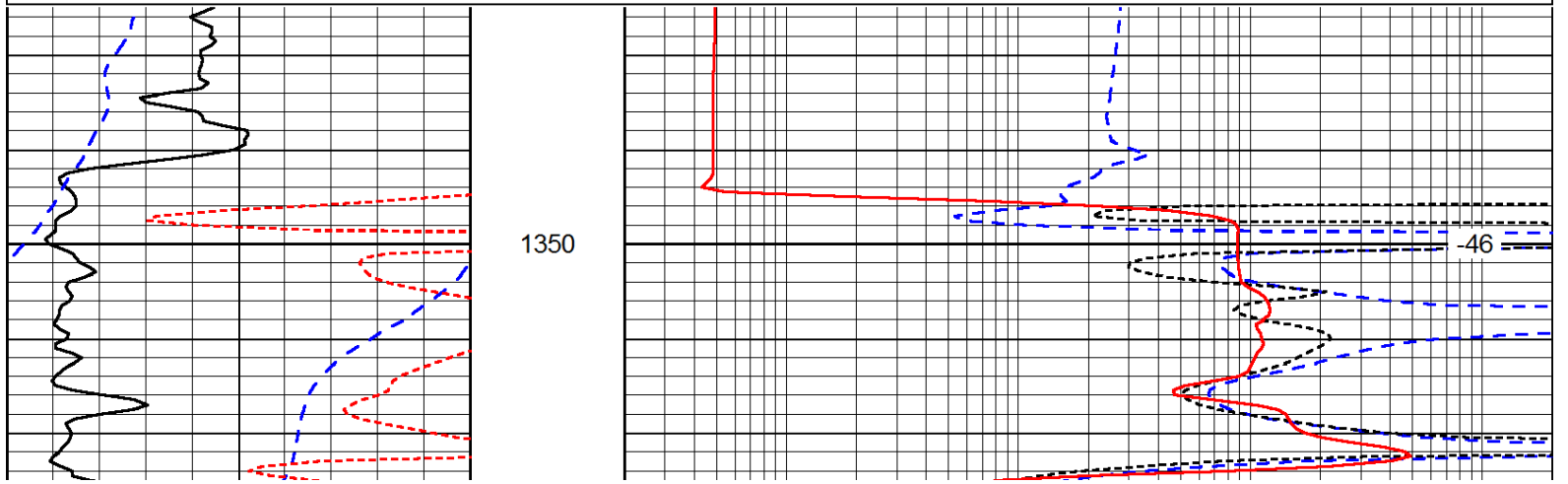
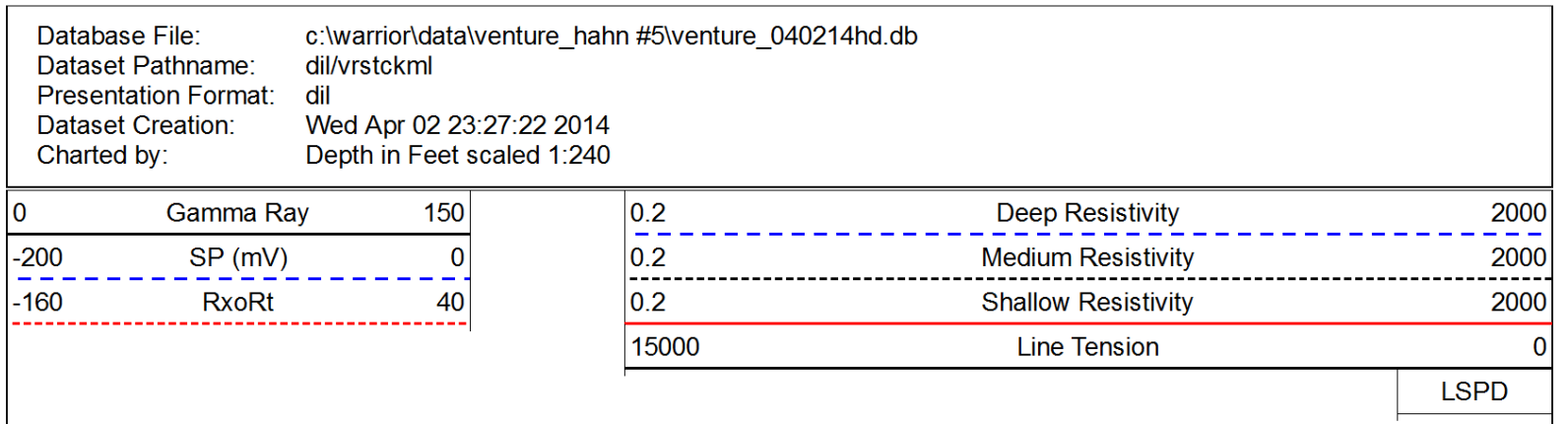
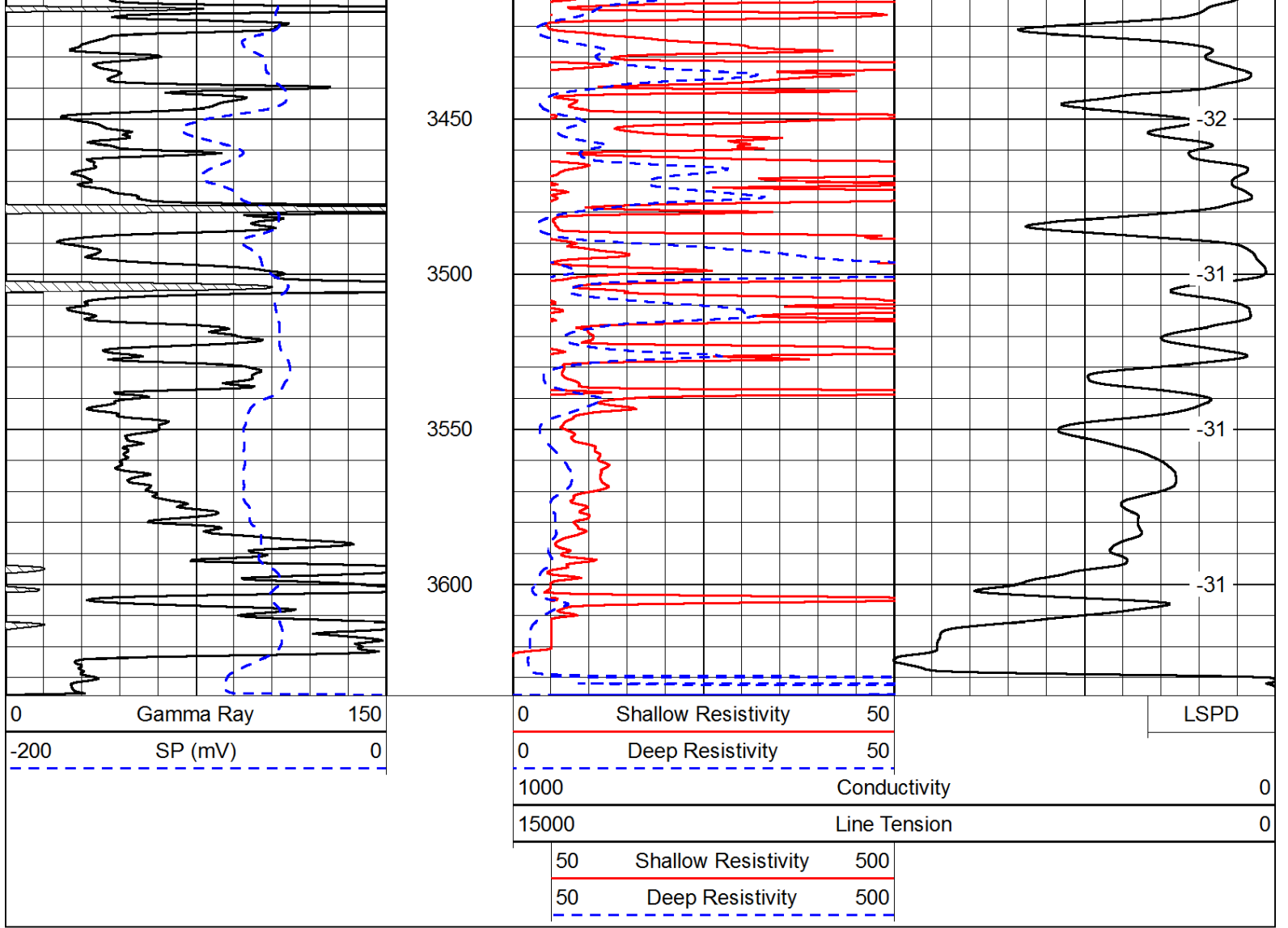
50	Shallow Resistivity	500
50	Deep Resistivity	500

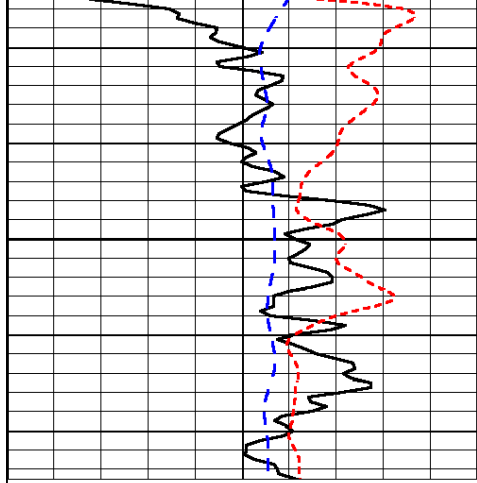






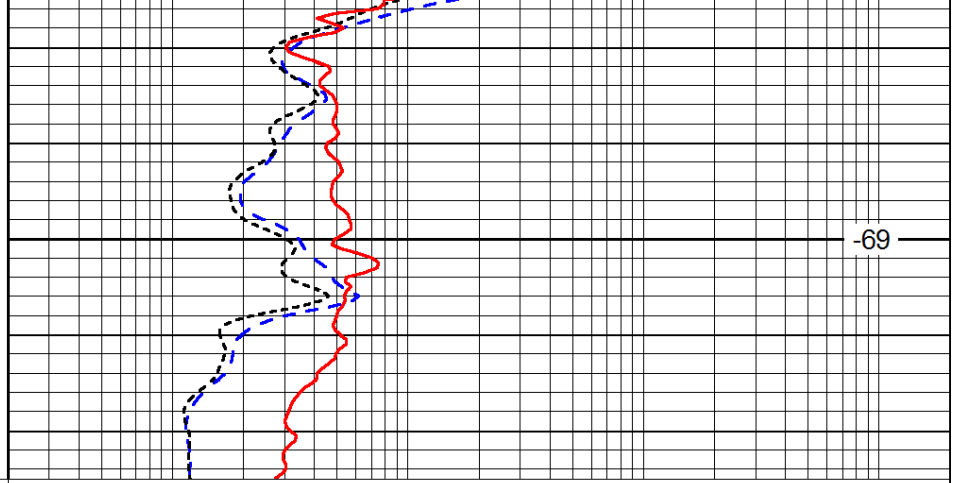






0	Gamma Ray	150
-200	SP (mV)	0
-160	RxoRt	40

1400



0.2	Deep Resistivity	2000
0.2	Medium Resistivity	2000
0.2	Shallow Resistivity	2000
15000	Line Tension	0

-69

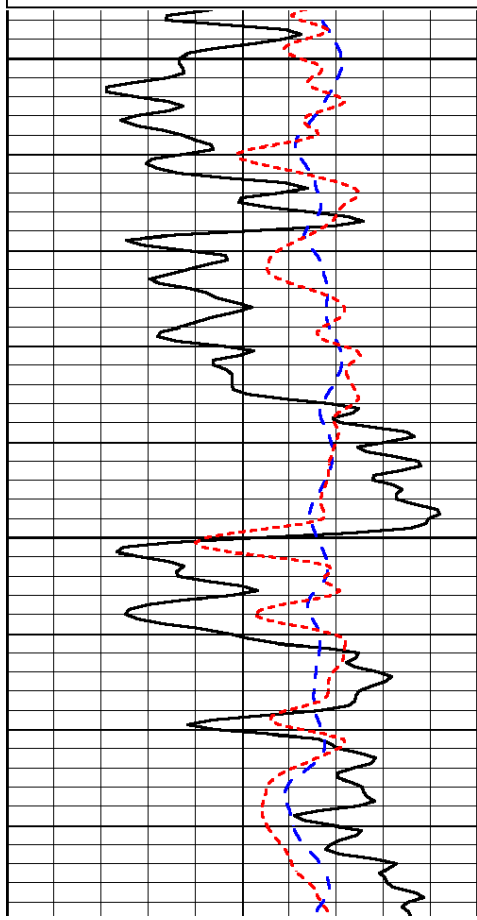
LSPD

Database File: c:\warrior\data\venture\_hahn #5\venture\_040214hd.db  
 Dataset Pathname: dil/vrstckml  
 Presentation Format: dil  
 Dataset Creation: Wed Apr 02 23:27:22 2014  
 Charted by: Depth in Feet scaled 1:240

0	Gamma Ray	150
-200	SP (mV)	0
-160	RxoRt	40

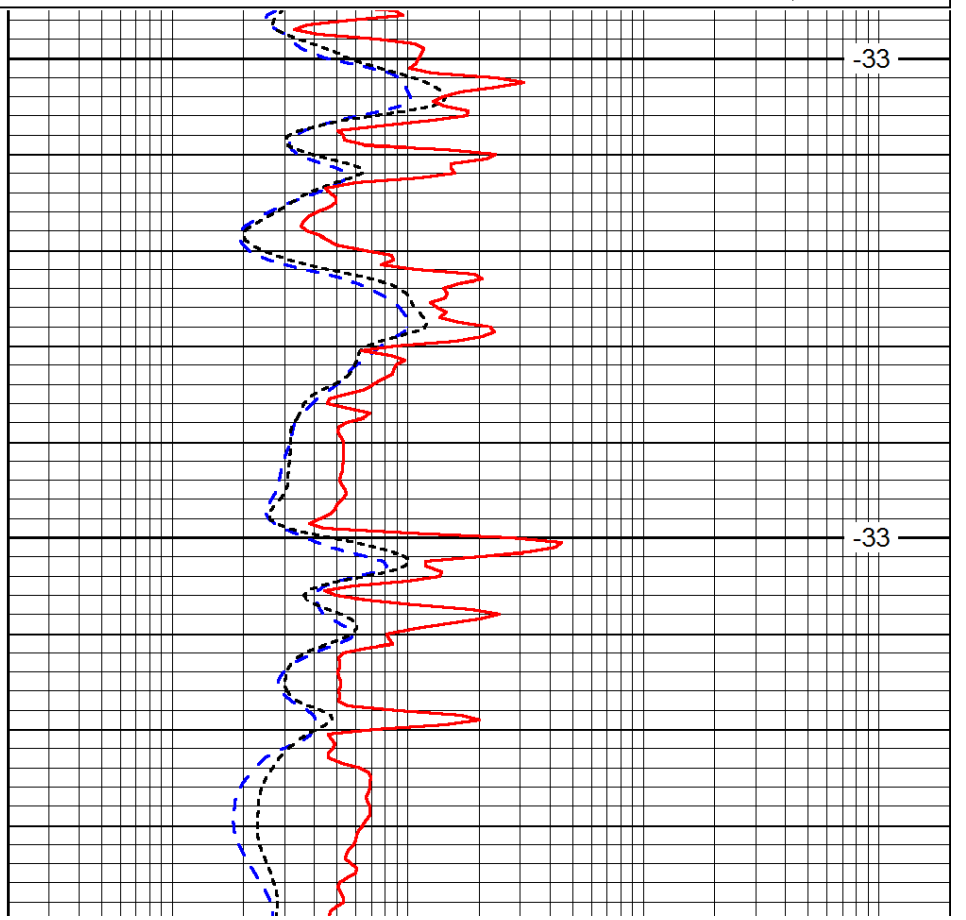
0.2	Deep Resistivity	2000
0.2	Medium Resistivity	2000
0.2	Shallow Resistivity	2000
15000	Line Tension	0

LSPD



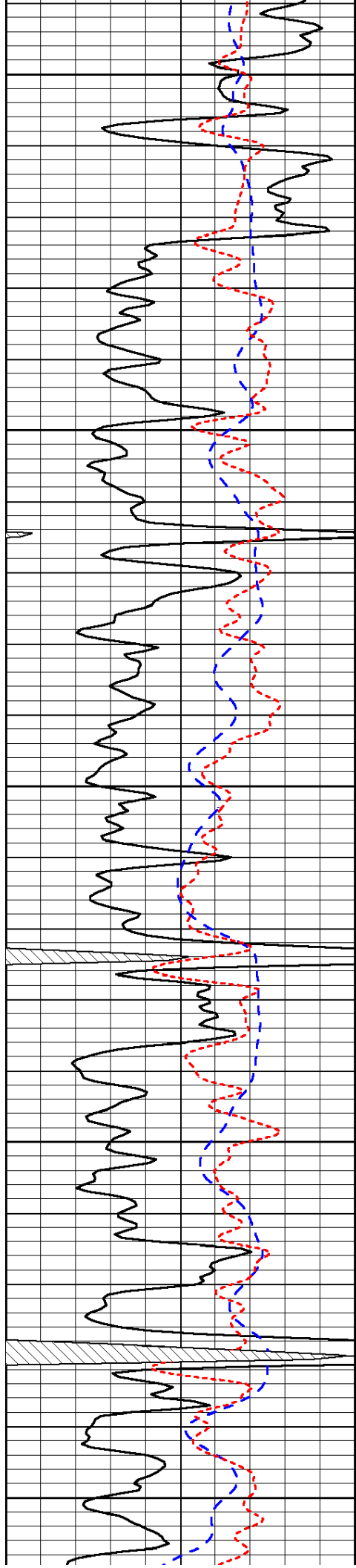
2900

2950



-33

-33



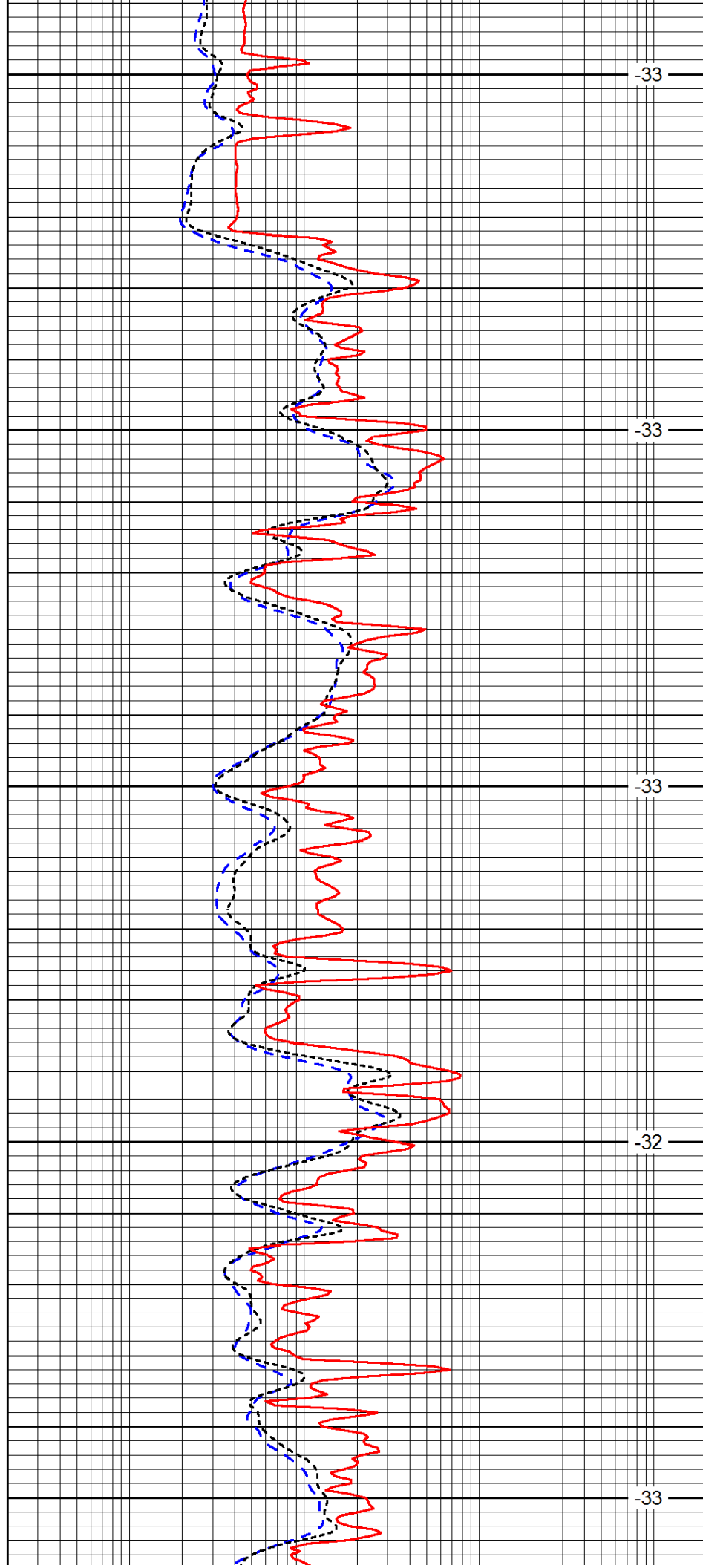
3000

3050

3100

3150

3200



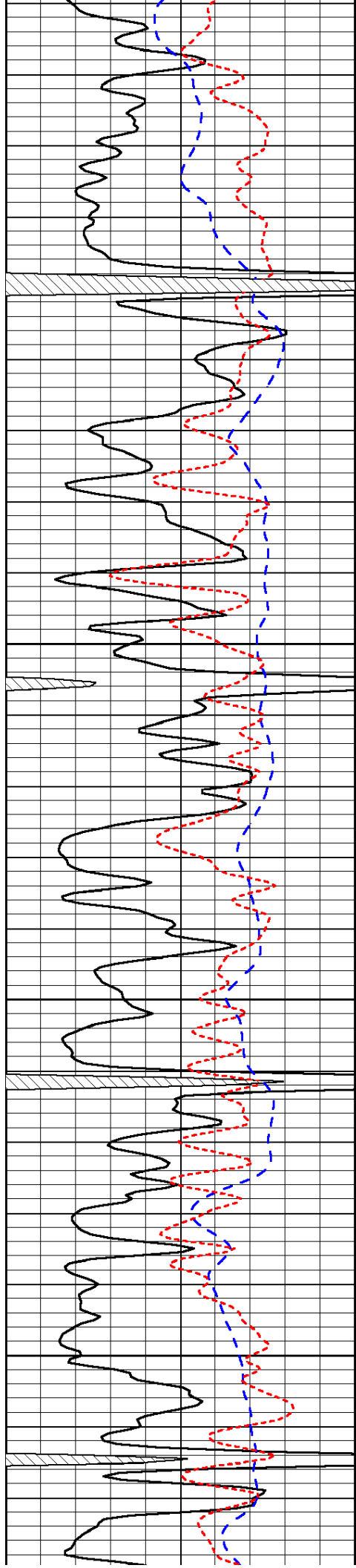
-33

-33

-33

-32

-33

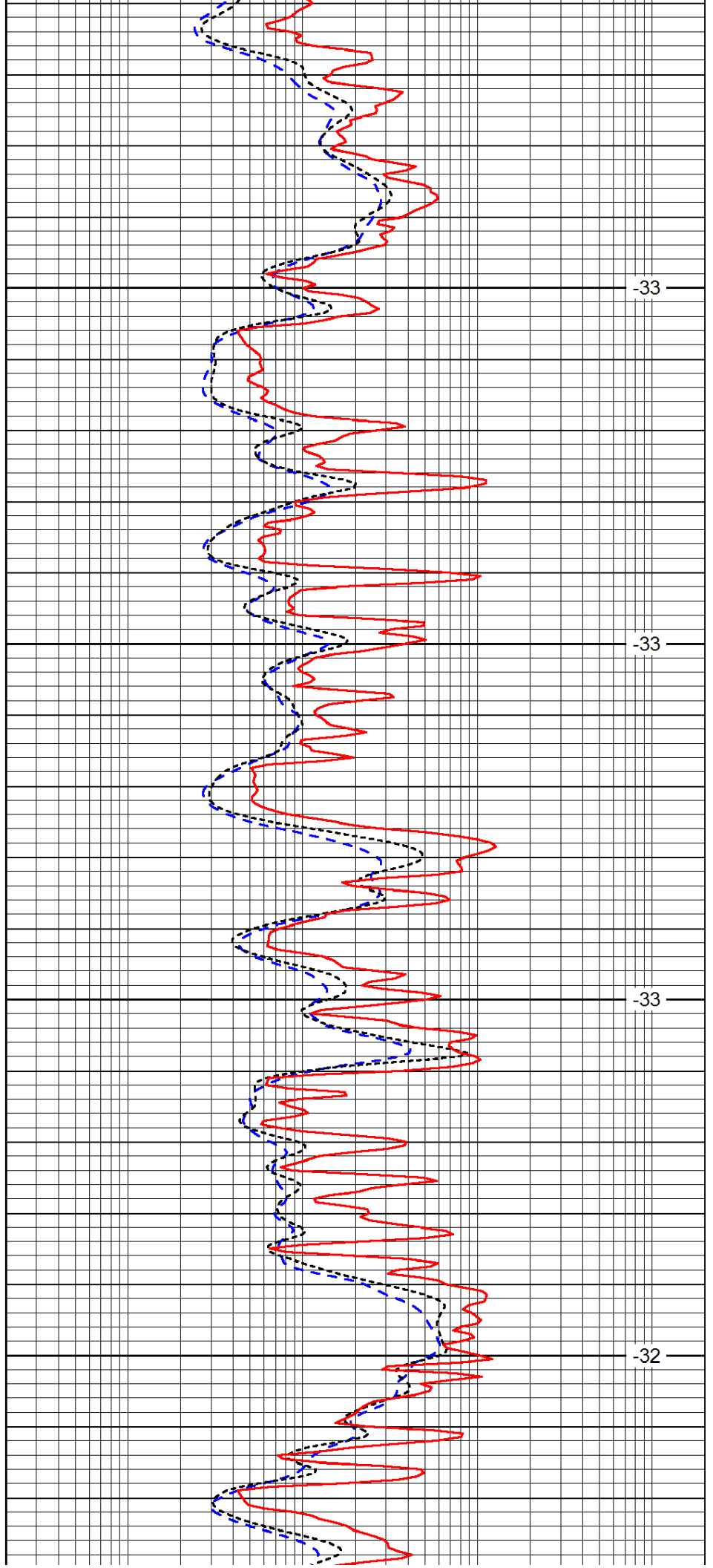


3250

3300

3350

3400

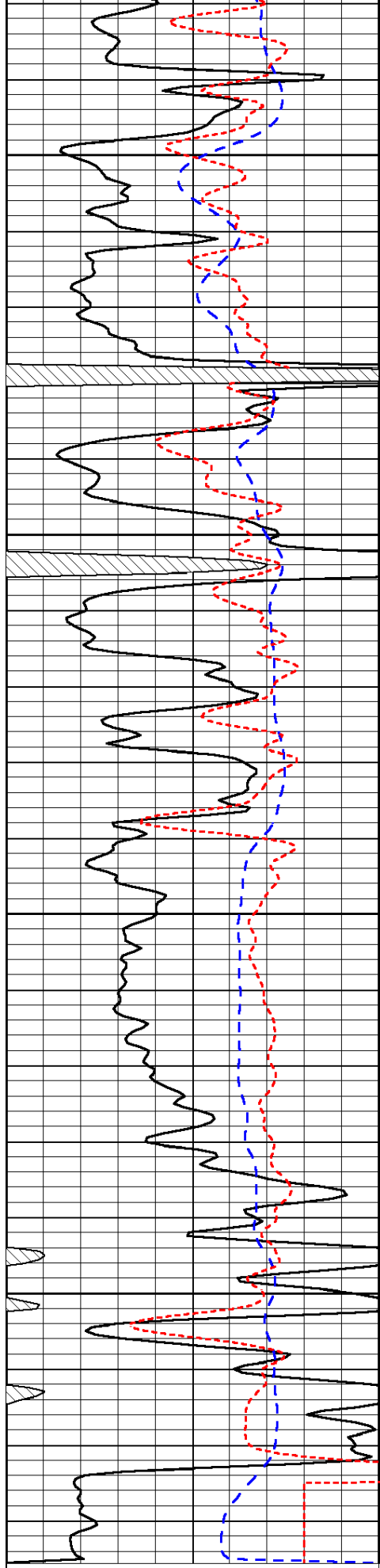


-33

-33

-33

-32



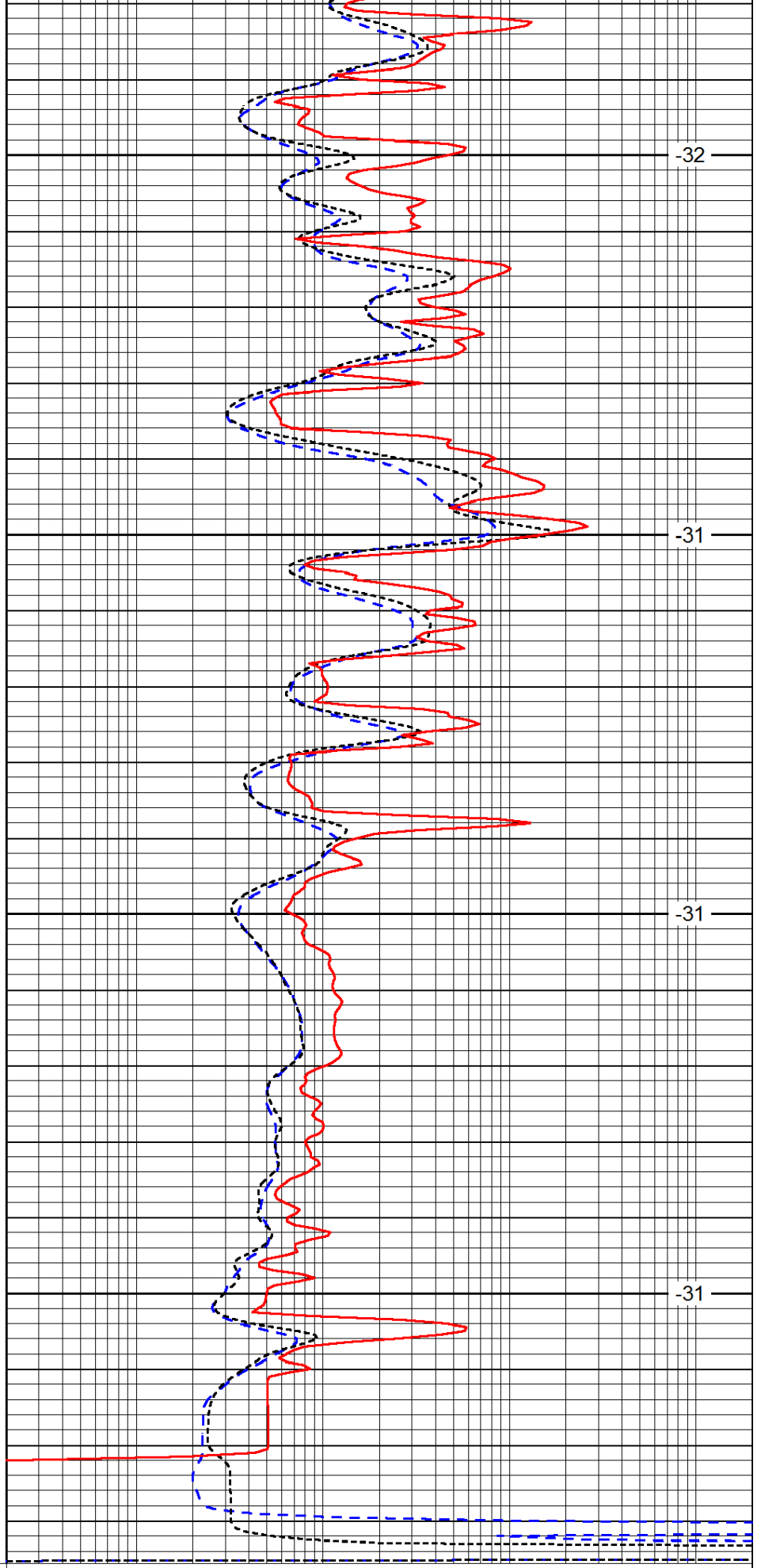
0	Gamma Ray	150
-200	SP (mV)	0
-160	RxoRt	40

3450

3500

3550

3600



-32

-31

-31

-31

0.2	Deep Resistivity	2000
0.2	Medium Resistivity	2000
0.2	Shallow Resistivity	2000

15000

Line Tension

0

LSPD