



Pioneer Energy Services

Microresistivity Log

15-153-20,993-00-00

API No.

Company **Berexco, LLC**
 Well **Michael #3-23**
 Field **East Fork**
 County **Rawlins** State **Kansas**

Location

990' FNL & 990' FWL

Other Services
RAG

Sec: 23

Twp: 1S

Rge: 36W

Elevation

Ground Level

3259

K.B. 3272
D.F. 3259
G.L.

Permanent Datum
 Log Measured From Kelly Bushing
 Drilling Measured From Kelly Bushing
 13 Ft. Above Perm. Datum

Date 3/17/2014

Run Number Two

Depth Driller 4550

Depth Logger 4549

Bottom Logged Interval 4548

Top Log Interval 3500

Casing Driller 8.625 @ 310

Casing Logger 309

Bit Size 7.875

Type Fluid in Hole Chemical

Salinity, ppm CL 800

Density / Viscosity 9.5 55

pH / Fluid Loss 10.5 7.2

Source of Sample Flowline

Rm @ Meas. Temp 64 @ 70

Rmf @ Meas. Temp 48 @ 70

Rmc @ Meas. Temp 86 @ 70

Source of Rmf / Rmc Charts

Rm @ BHT .37 @ 122

Operating Rig Time 4 Hours

Max Rec. Temp. F 122

Equipment Number 108

Location Hays

Recorded By J. Long

Witnessed By Pete Vollmer

<<< Fold Here >>>

All interpretations are opinions based on inferences from electrical or other measurements and we cannot and do not guarantee the accuracy or correctness of any interpretation, and we shall not, except in the case of gross or willful negligence on our part, be liable or responsible for any loss, costs, damages, or expenses incurred or sustained by anyone resulting from any interpretation made by any of our officers, agents or employees. These interpretations are also subject to our general terms and conditions set out in our current Price Schedule.

Comments

Thank you for using Pioneer Energy Services
www.pioneerres.com
 785 625 3858

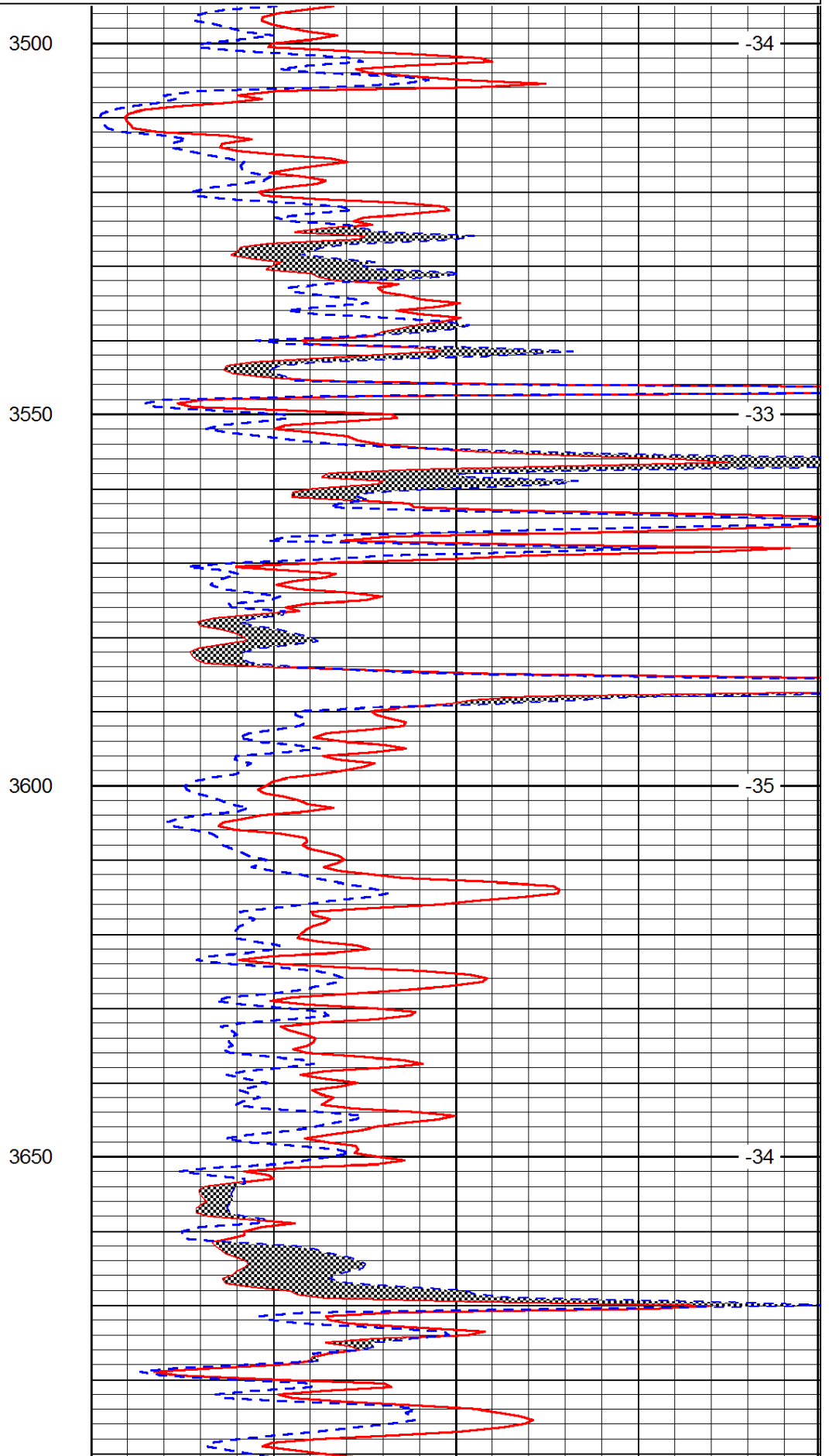
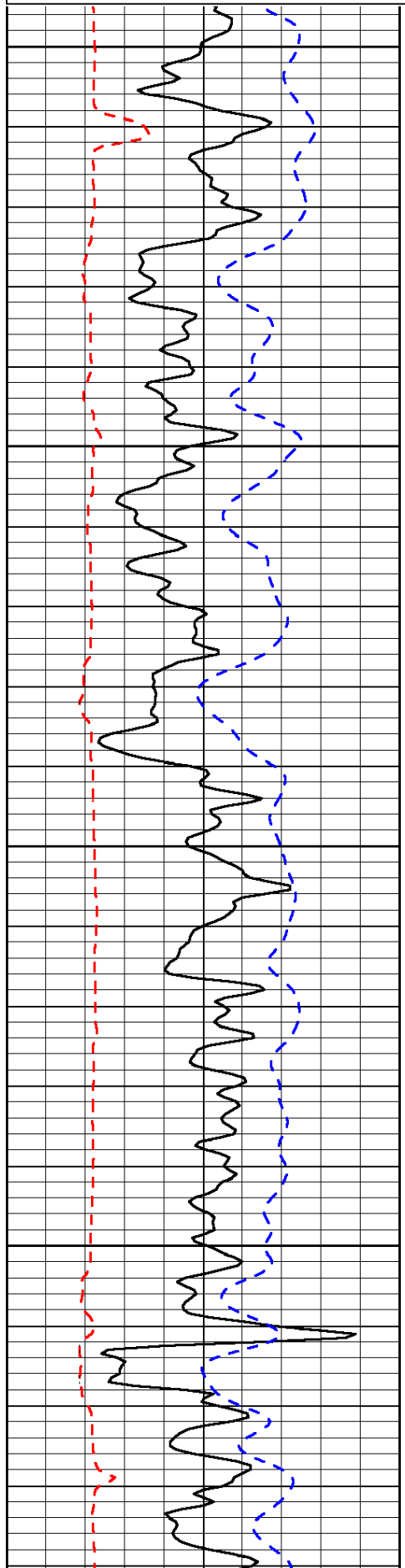
Beardsley, North to AA Road, West to 5.5 Road, North to BB Road, 1/3 West, South Into

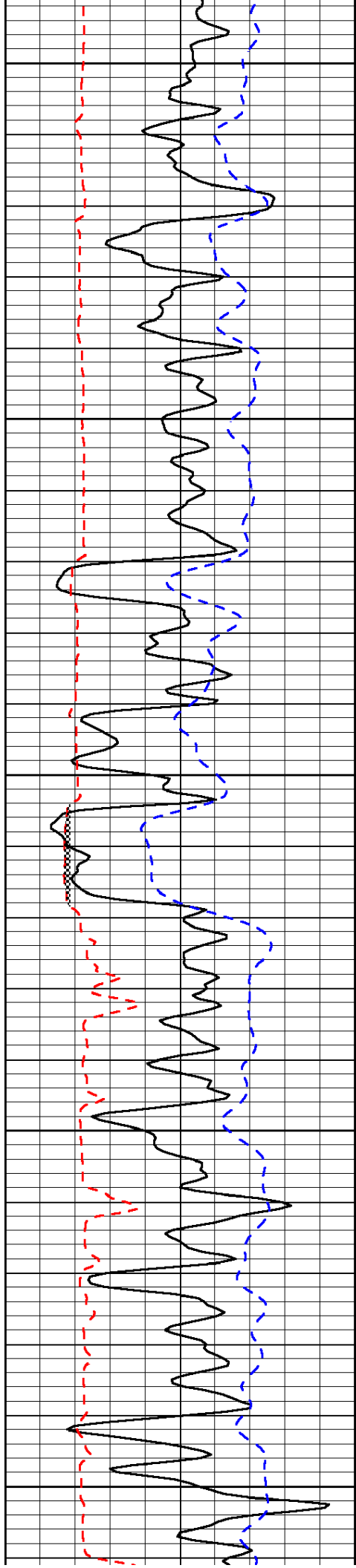
Database File: c:\warrior\data\berexco_michael #3-23\berexco_michael_3-23hd.db
 Dataset Pathname: rag/berrag
 Presentation Format: micro
 Dataset Creation: Mon Mar 17 22:39:02 2014
 Charted by: Depth in Feet scaled 1:240

0	Gamma Ray	150
6	Micro Log Caliper (GAPI)	16
-200	SP (mV)	0

0	Micro Inverse 1 X 1	40
0	Micro Normal 2"	40
15000	Line Weight	0

LSPD





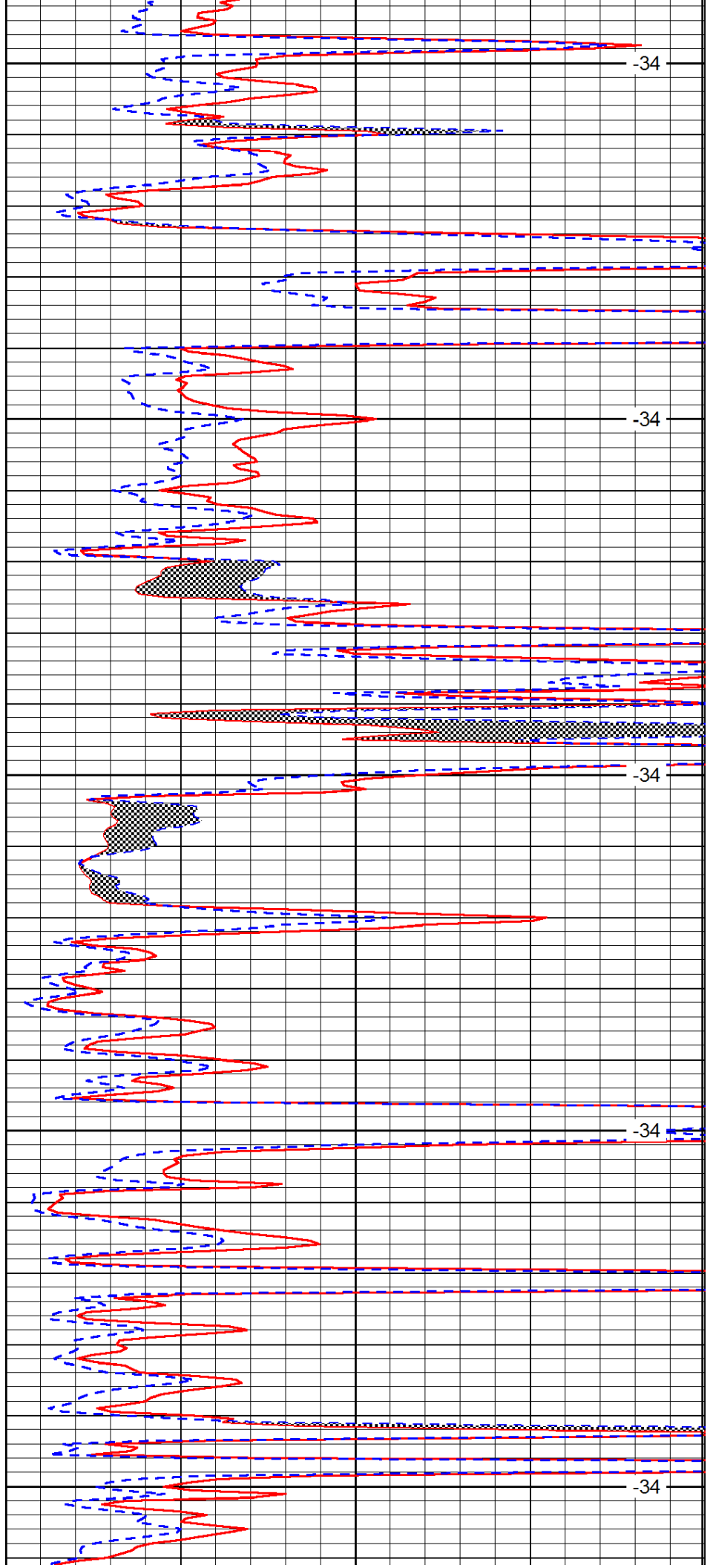
3700

3750

3800

3850

3900



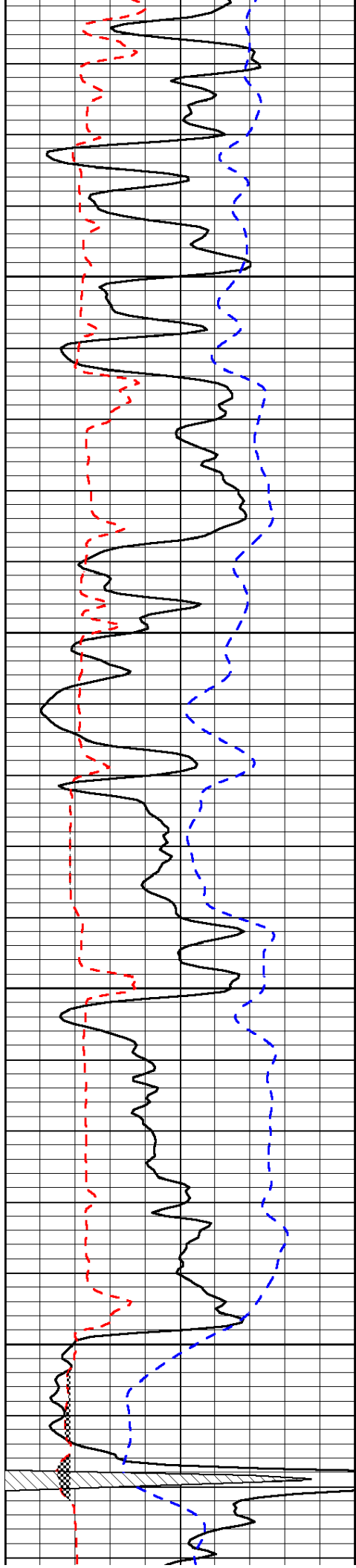
-34

-34

-34

-34

-34

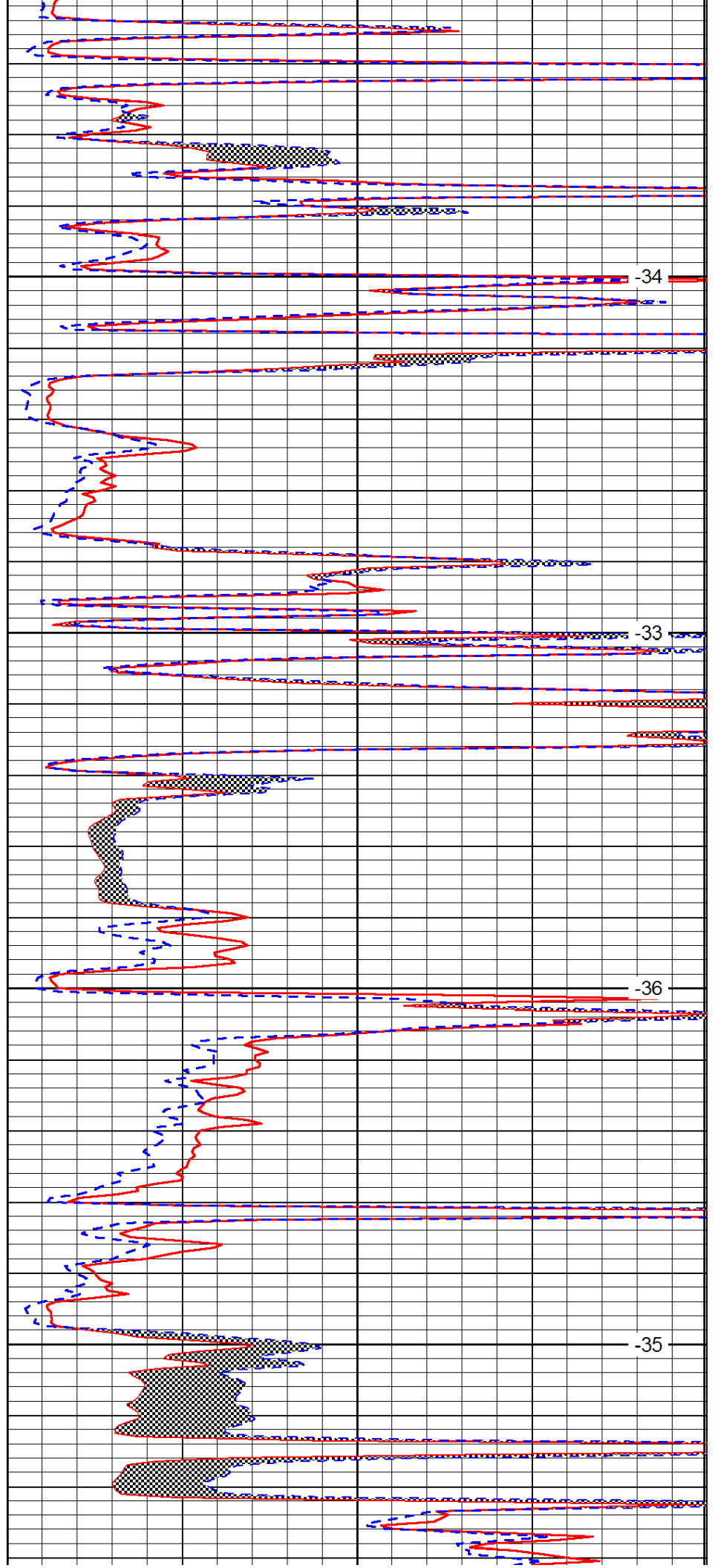


3950

4000

4050

4100

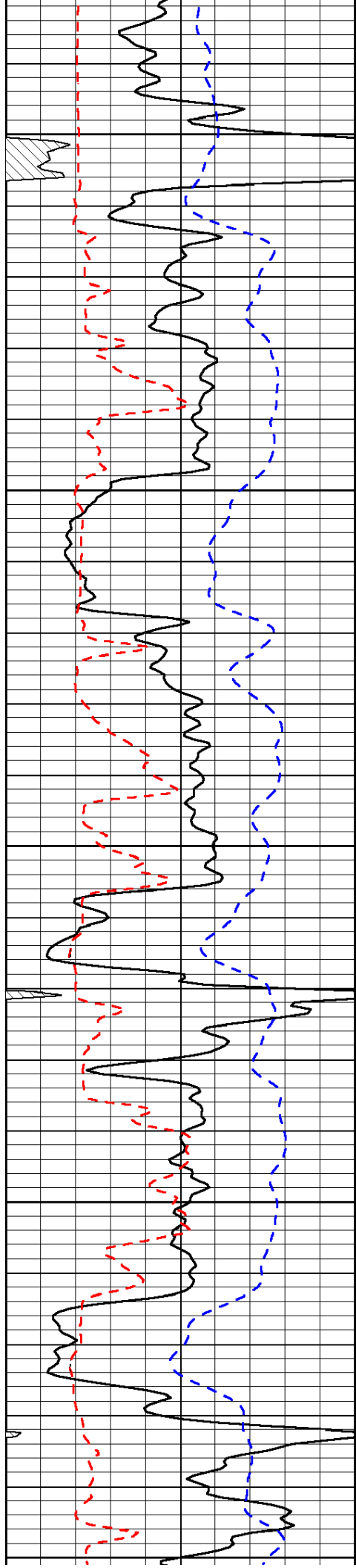


-34

-33

-36

-35



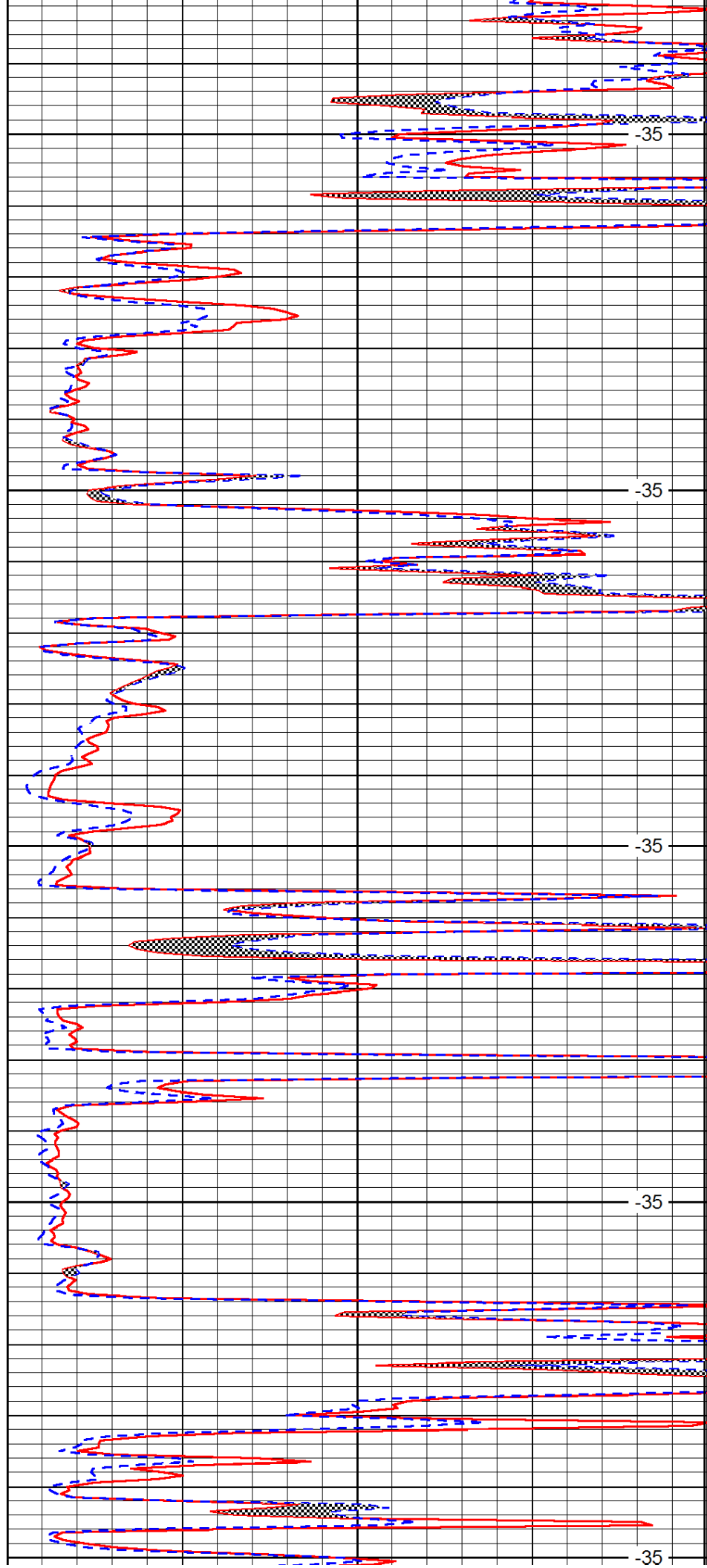
4150

4200

4250

4300

4350



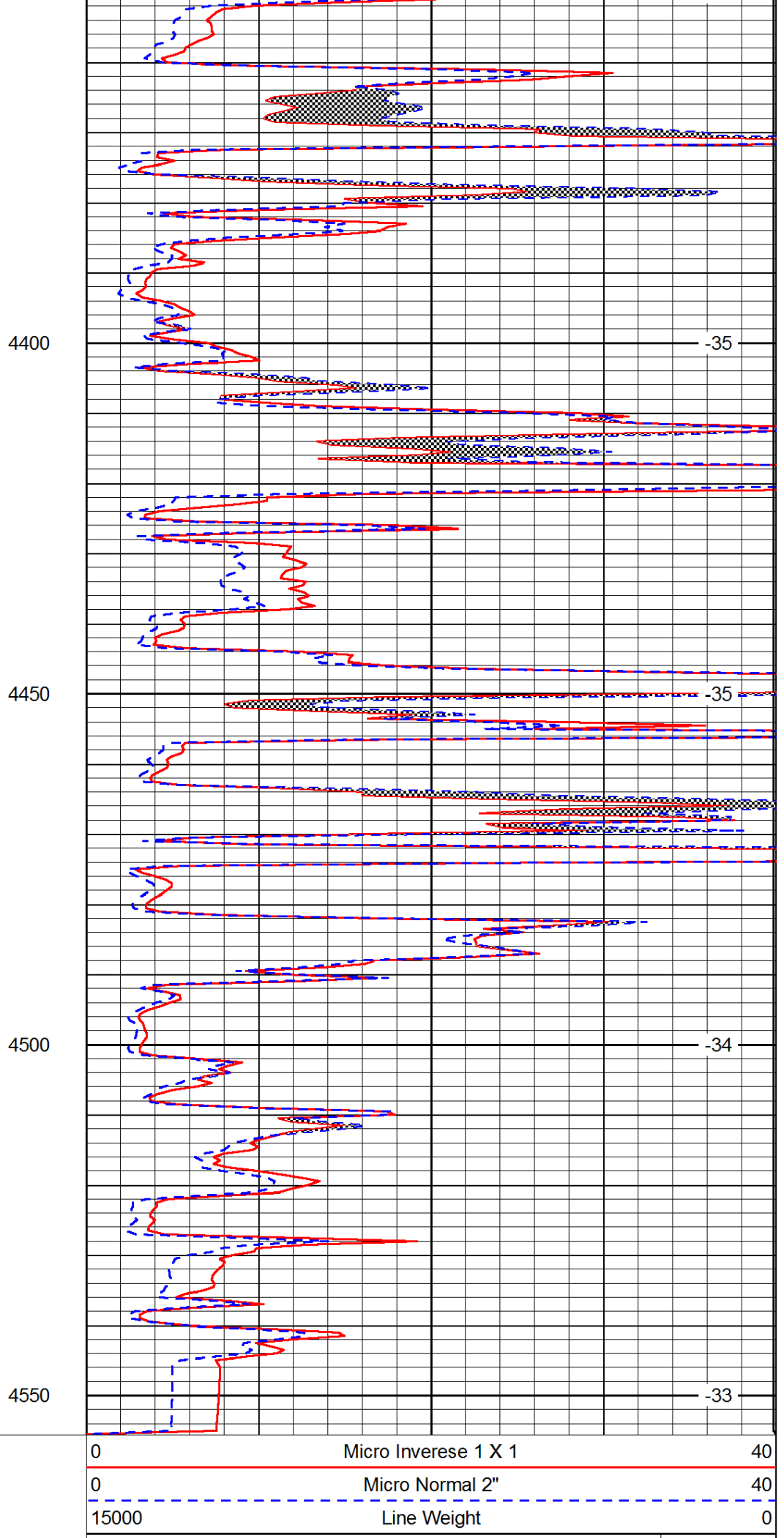
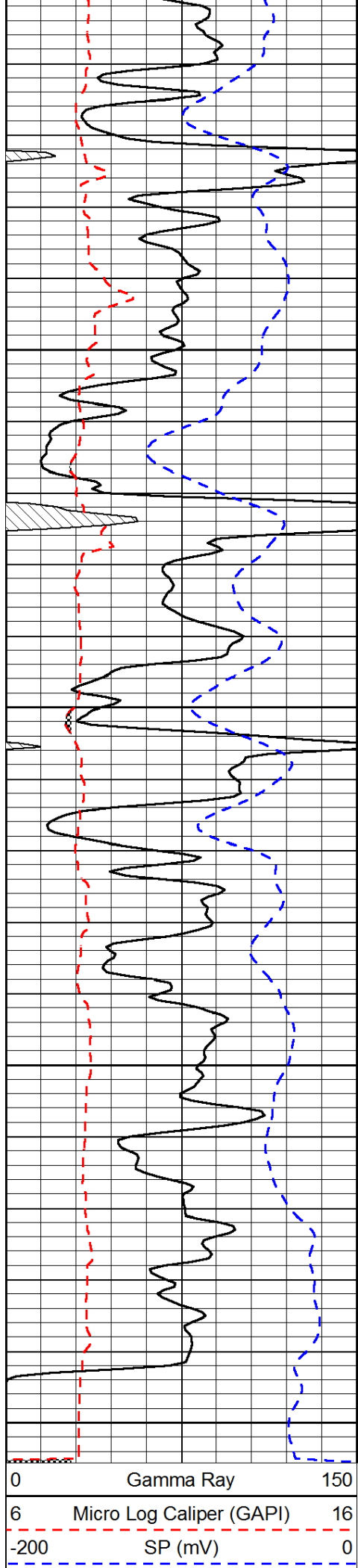
-35

-35

-35

-35

-35



4400

-35

4450

-35

4500

-34

4550

-33

