



Pioneer Energy Services

Radiation Guard Log

15-153-20,993-00-00

API No.

Company **Berexco, LLC**
 Well **Michael #3-23**
 Field **East Fork**
 County **Rawlins** State **Kansas**

Location **990' FNL & 990' FWL**

Sec: **23** Twp: **1S** Rge: **36W**

Other Services
MEL

Elevation

K.B. 3272
D.F. 3259
G.L. 3259

Permanent Datum **Ground Level** Elevation **3259**
 Log Measured From **Kelly Bushing** 13 Ft. Above Perm. Datum
 Drilling Measured From **Kelly Bushing**

Date	3/17/2014	
Run Number	One	
Depth Driller	4550	
Depth Logger	4549	
Bottom Logged Interval	4548	
Top Log Interval	300	
Casing Driller	8.625 @ 310	
Casing Logger	309	
Bit Size	7.875	
Type Fluid in Hole	Chemical	
Salinity,ppm CL	800	
Density / Viscosity	9.5 55	
pH / Fluid Loss	10.5 7.2	
Source of Sample	Flowline	
Rm @ Meas. Temp	.64 @ 70	
Rmf @ Meas. Temp	.48 @ 70	
Rmc @ Meas. Temp	.86 @ 70	
Source of Rmf / Rmc	Charts	
Rm @ BHT	.37 @ 122	
Operating Rig Time	4 Hours	
Max Rec. Temp. F	122	
Equipment Number	108	
Location	Hays	
Recorded By	J. Long	
Witnessed By	Pete Vollmer	

<<< Fold Here >>>

All interpretations are opinions based on inferences from electrical or other measurements and we cannot and do not guarantee the accuracy or correctness of any interpretation, and we shall not, except in the case of gross or willful negligence on our part, be liable or responsible for any loss, costs, damages, or expenses incurred or sustained by anyone resulting from any interpretation made by any of our officers, agents or employees. These interpretations are also subject to our general terms and conditions set out in our current Price Schedule.

Comments

Thank you for using Pioneer Energy Services
www.pioneerres.com
 785 625 3858

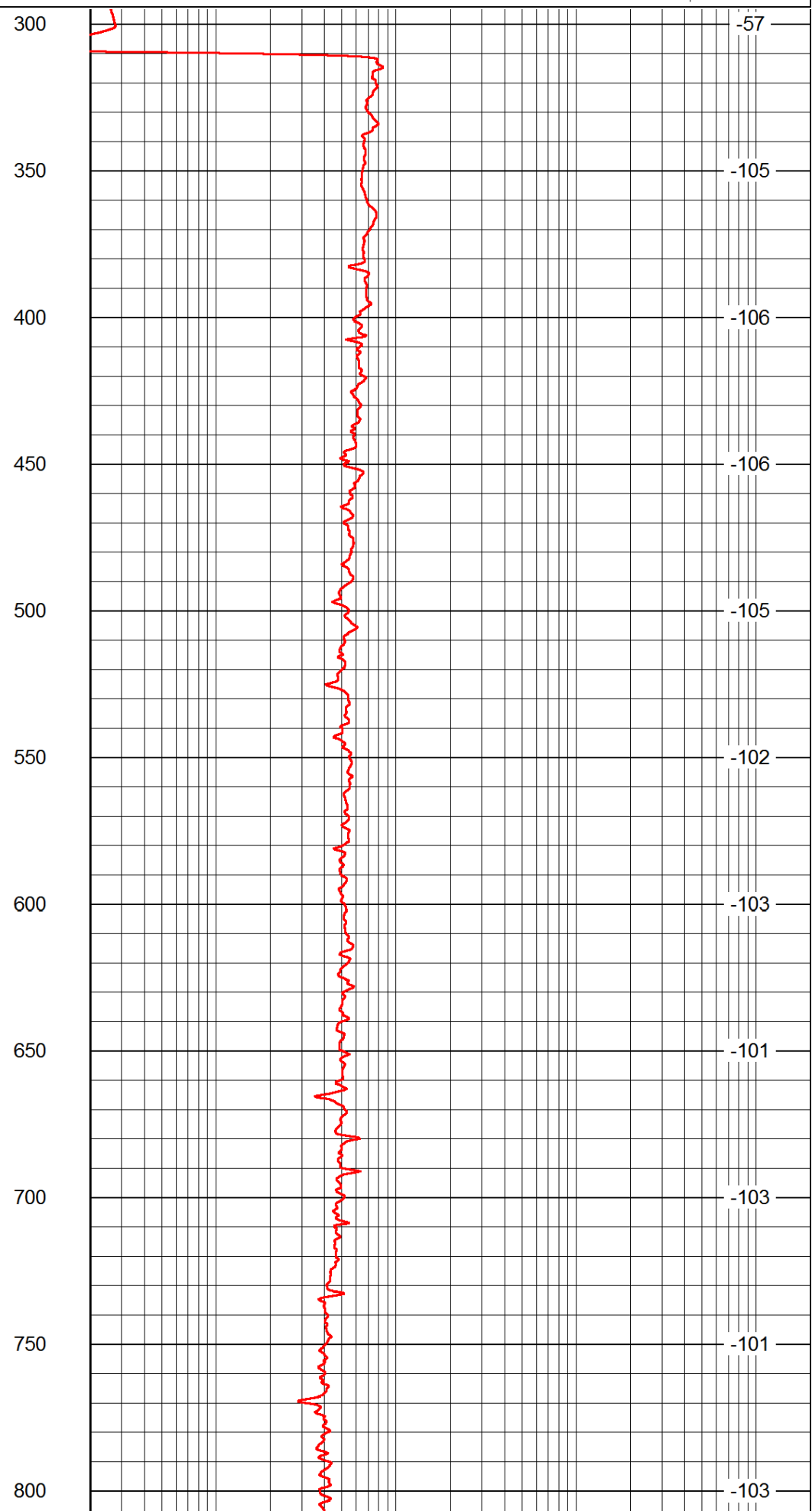
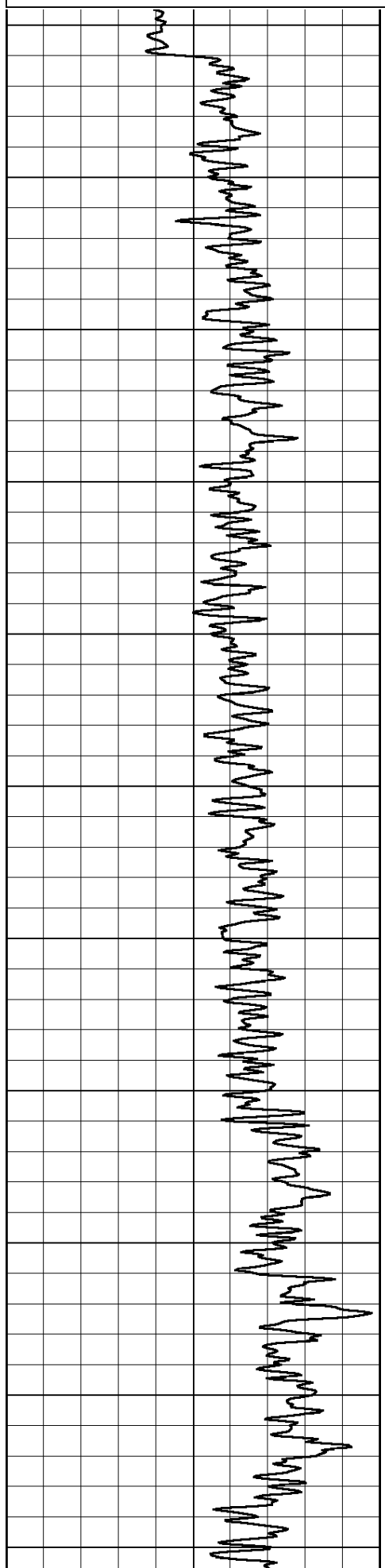
Beardsley, North to AA Road, West to 5.5 Road, North to BB Road, 1/3 West, South Into

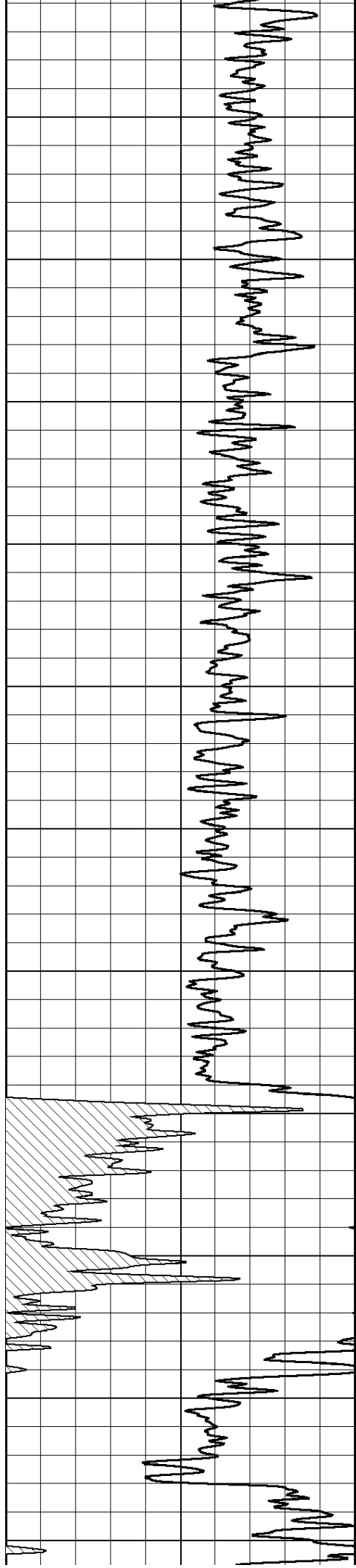
Database File: c:\warrior\data\berexco_michael #3-23\berexco_michael_3-23hd.db
 Dataset Pathname: rag/berrag
 Presentation Format: rag2in
 Dataset Creation: Mon Mar 17 22:39:02 2014
 Charted by: Depth in Feet scaled 1:600

0 Gamma Ray 150

0.2 lgrd 2000

LSPD





850

900

950

1000

1050

1100

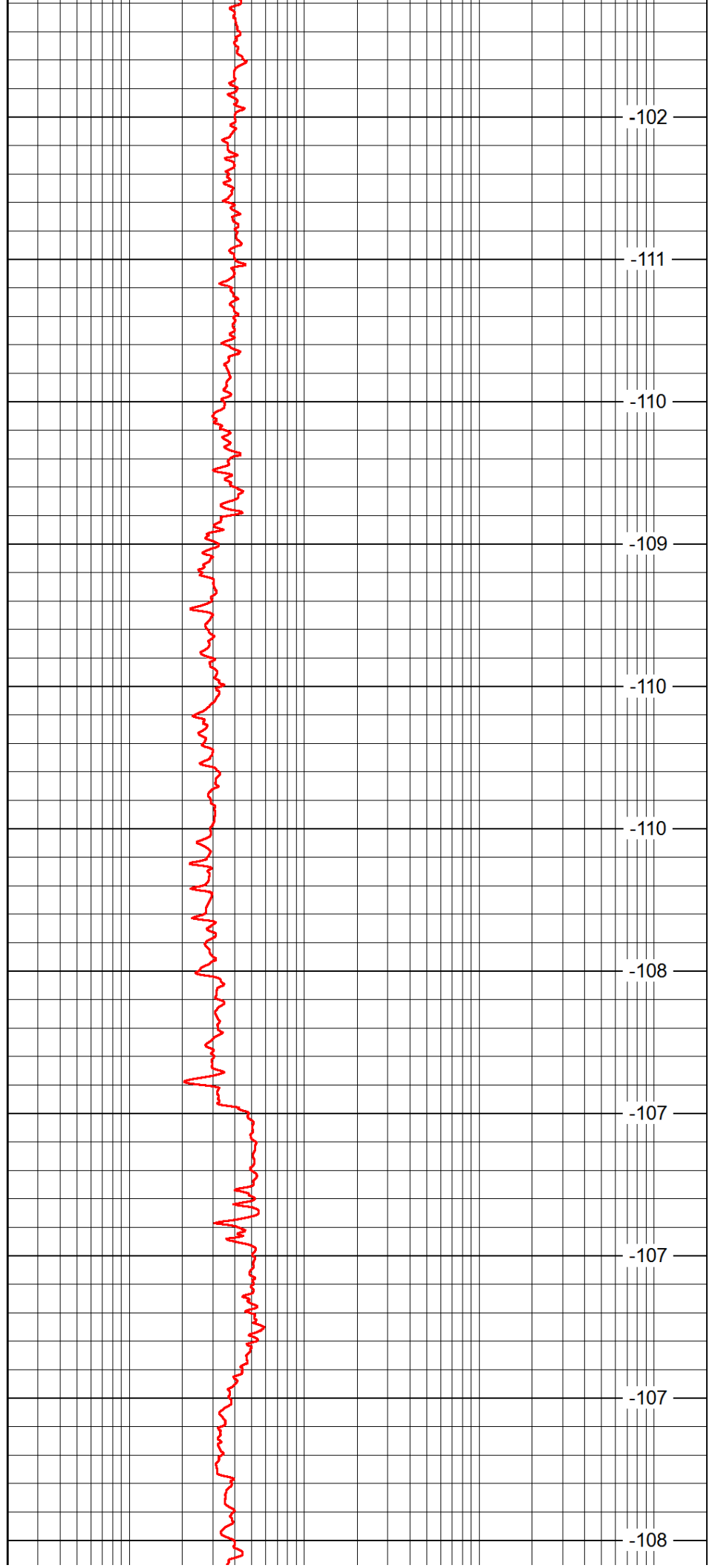
1150

1200

1250

1300

1350



-102

-111

-110

-109

-110

-110

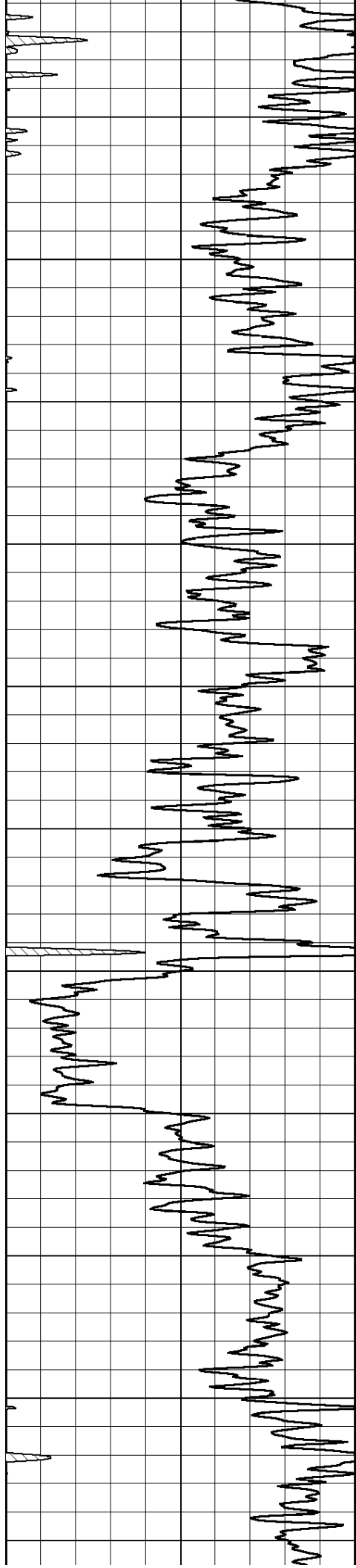
-108

-107

-107

-107

-108



1400

1450

1500

1550

1600

1650

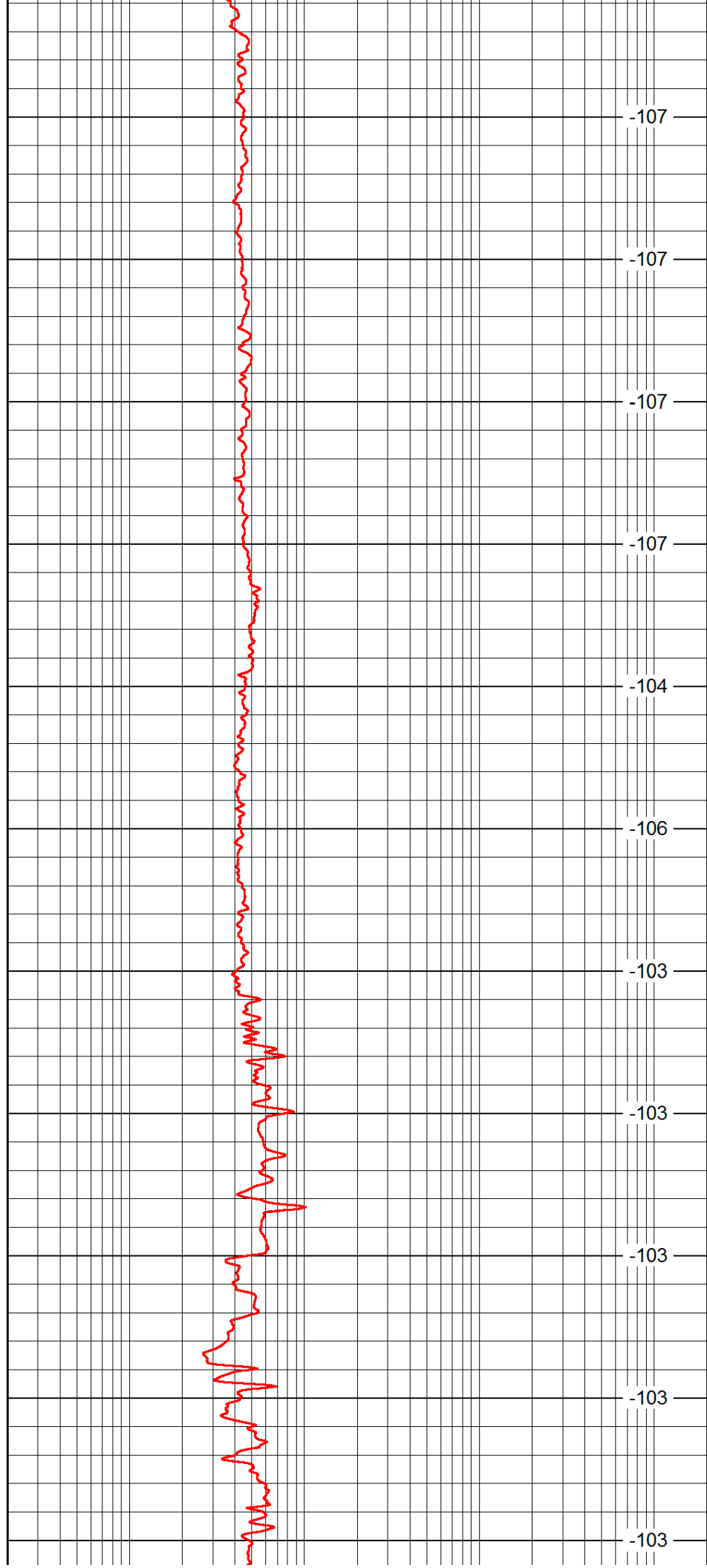
1700

1750

1800

1850

1900



-107

-107

-107

-107

-104

-106

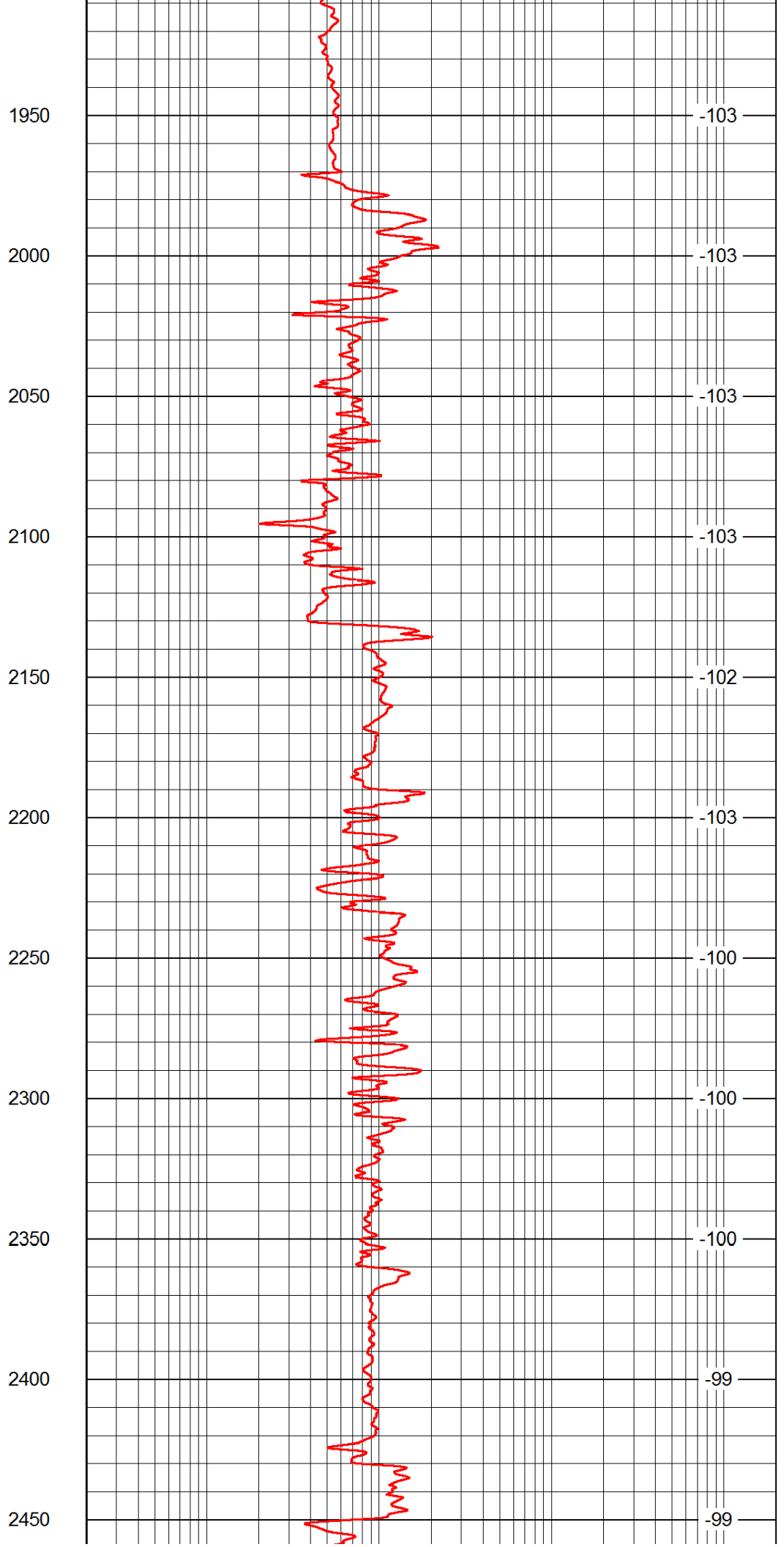
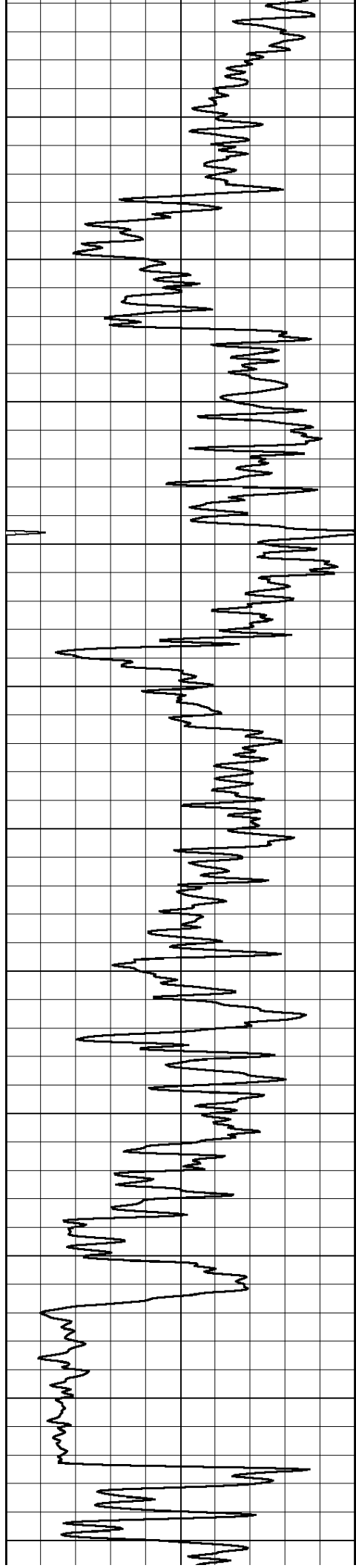
-103

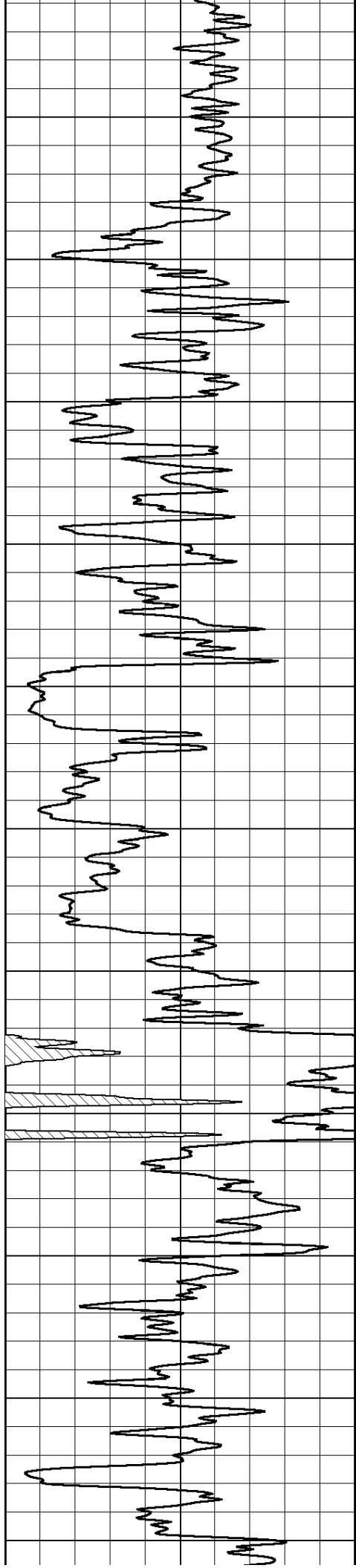
-103

-103

-103

-103





2500

2550

2600

2650

2700

2750

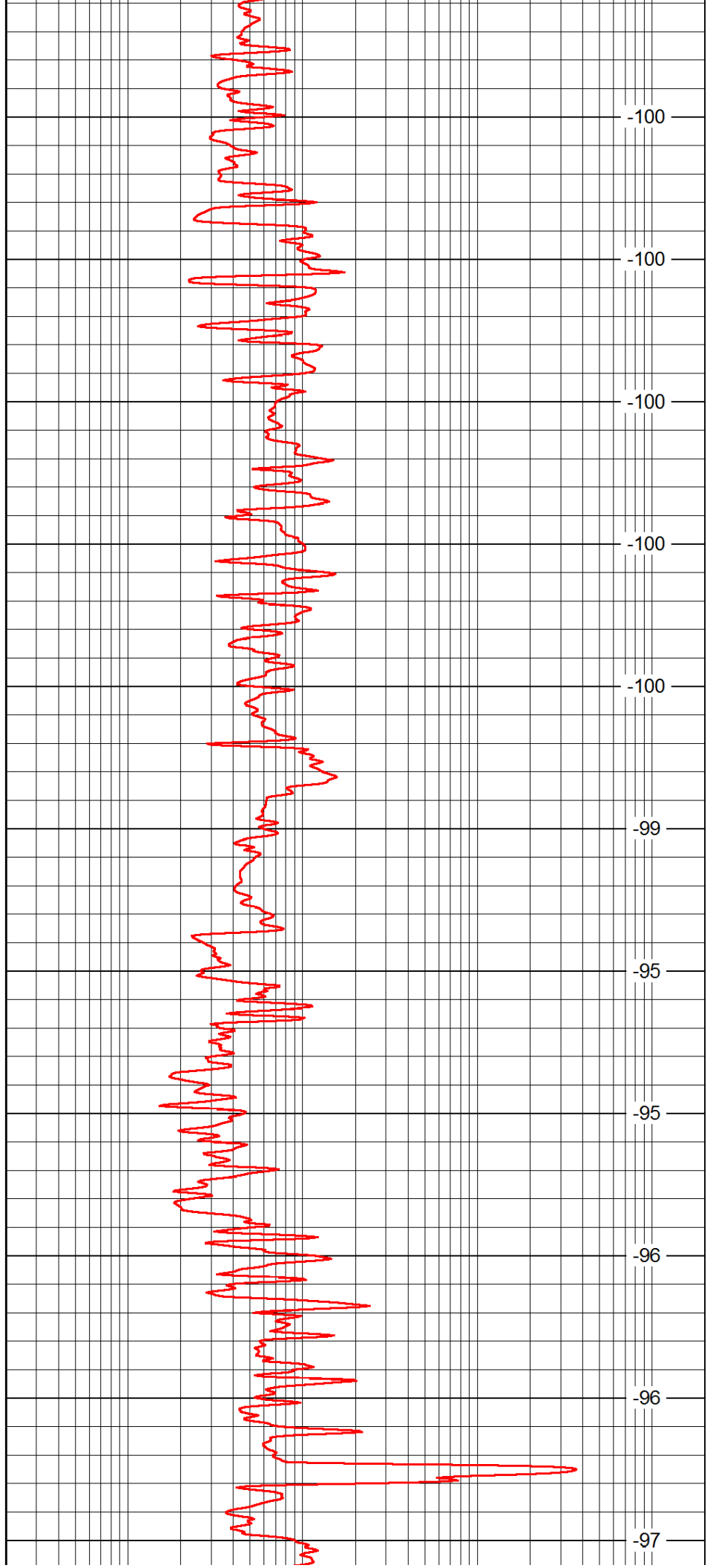
2800

2850

2900

2950

3000



-100

-100

-100

-100

-100

-99

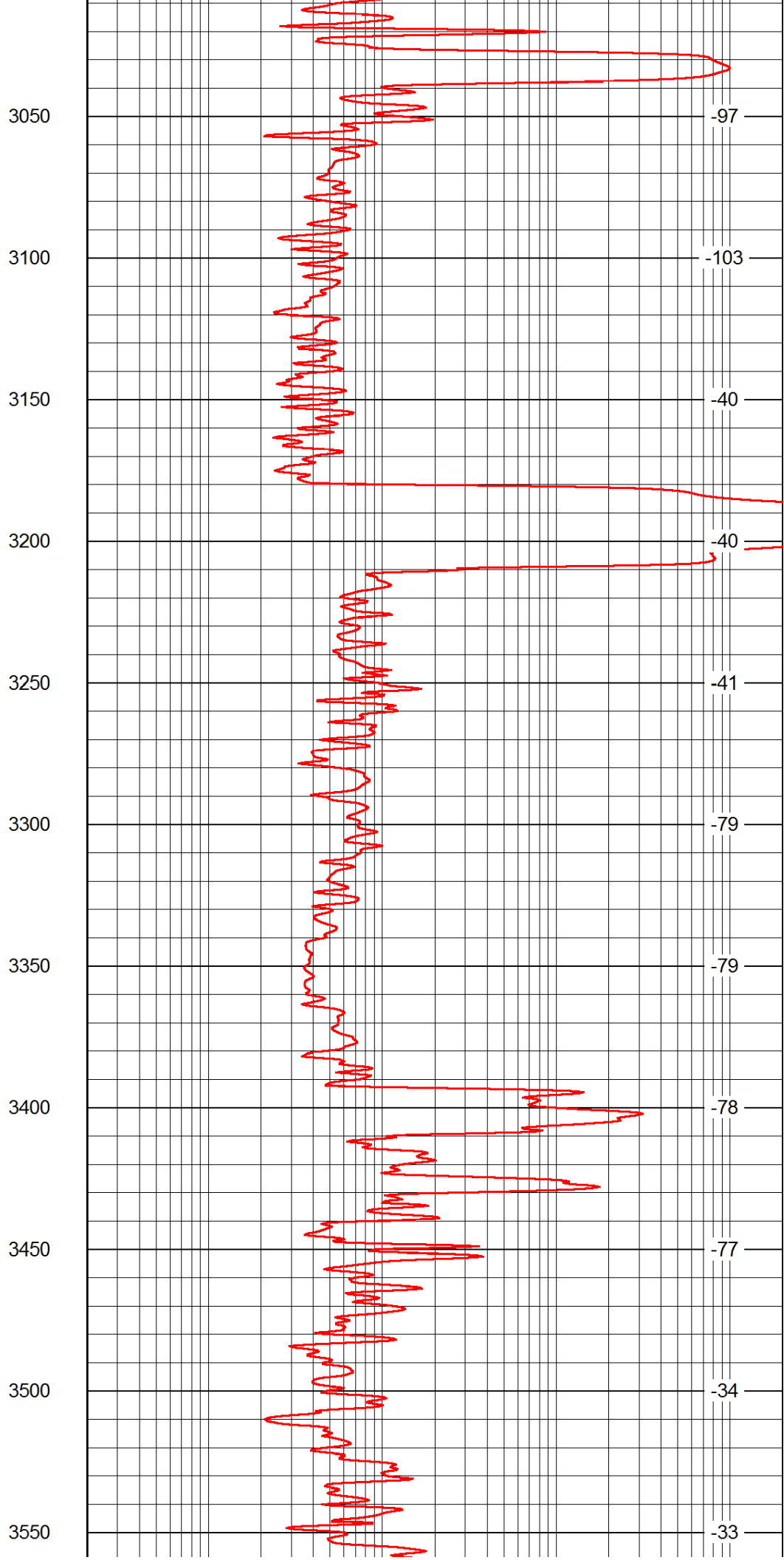
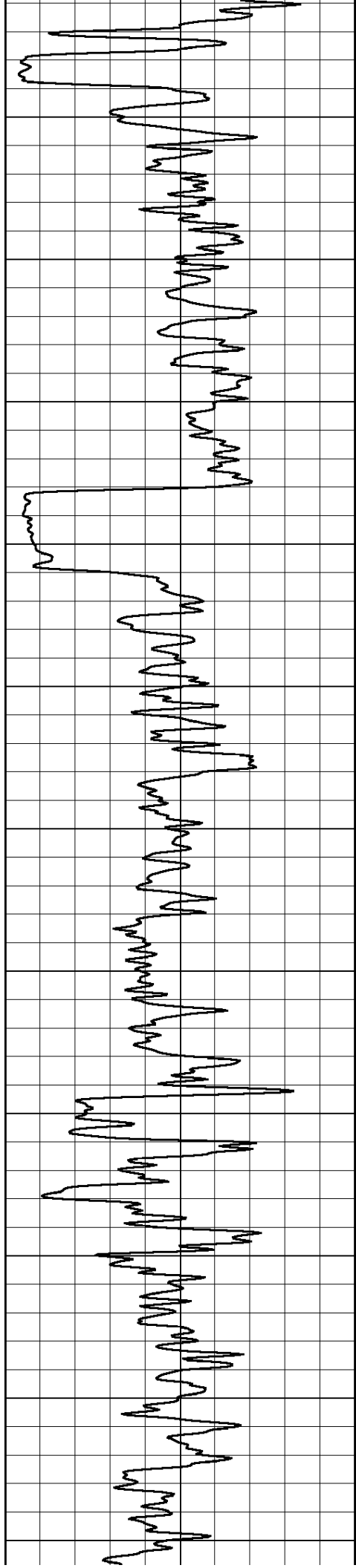
-95

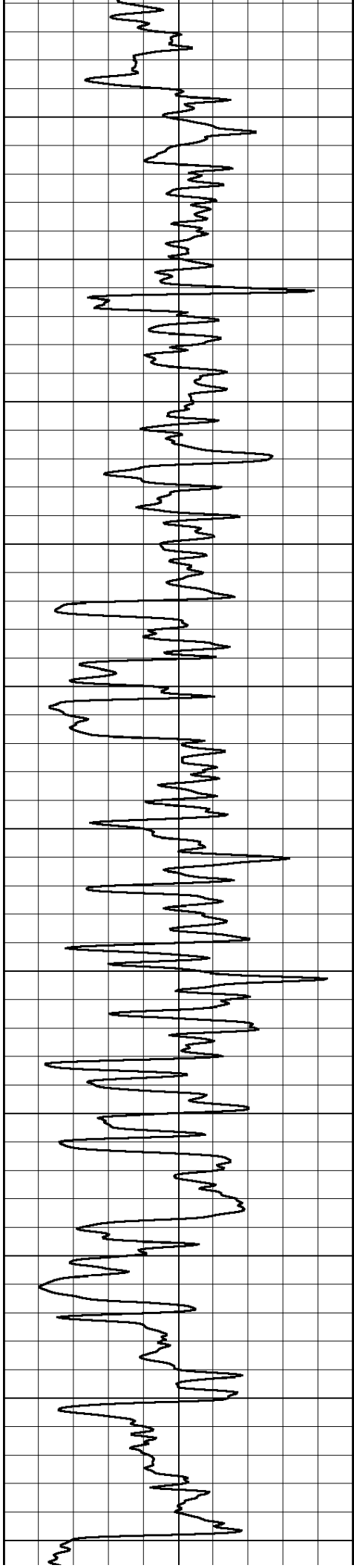
-95

-96

-96

-97





3600

3650

3700

3750

3800

3850

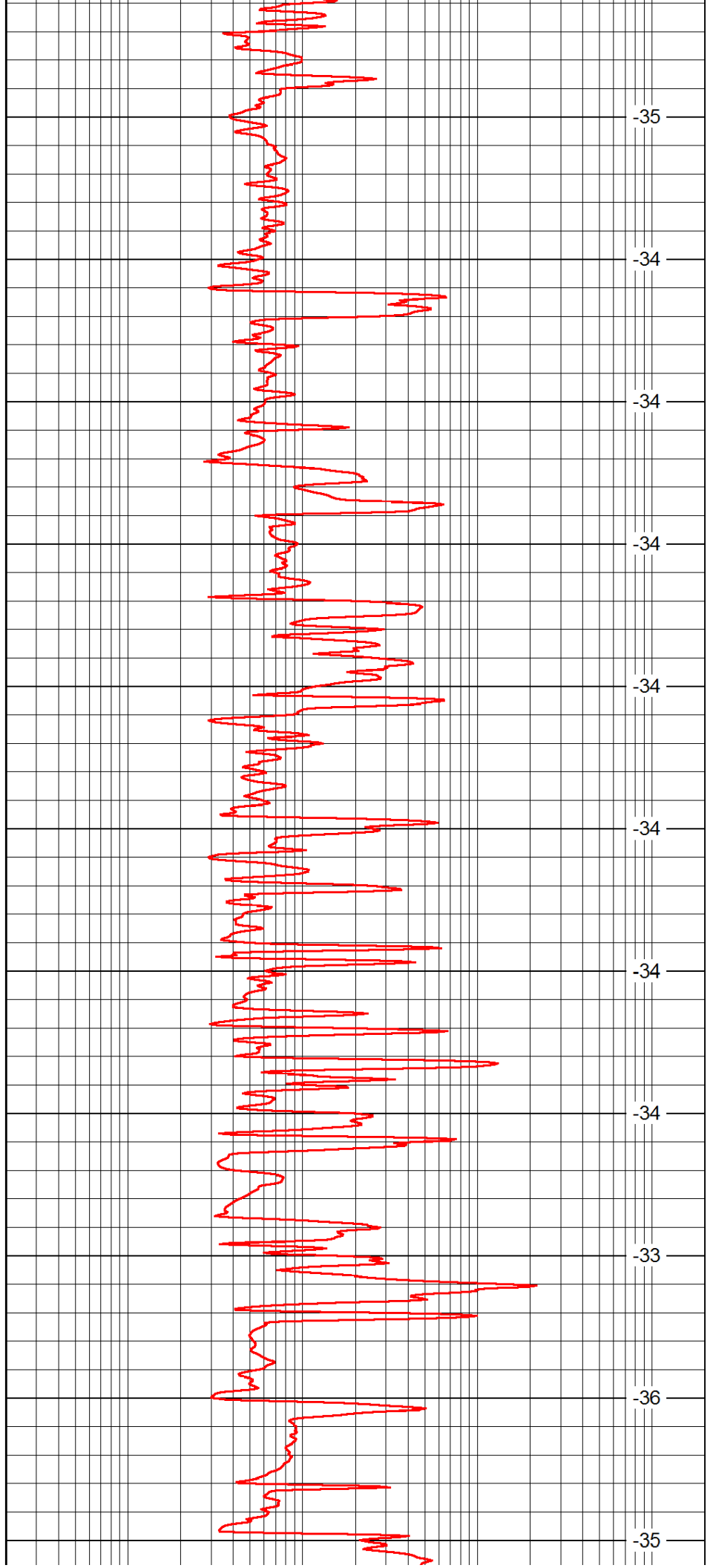
3900

3950

4000

4050

4100



-35

-34

-34

-34

-34

-34

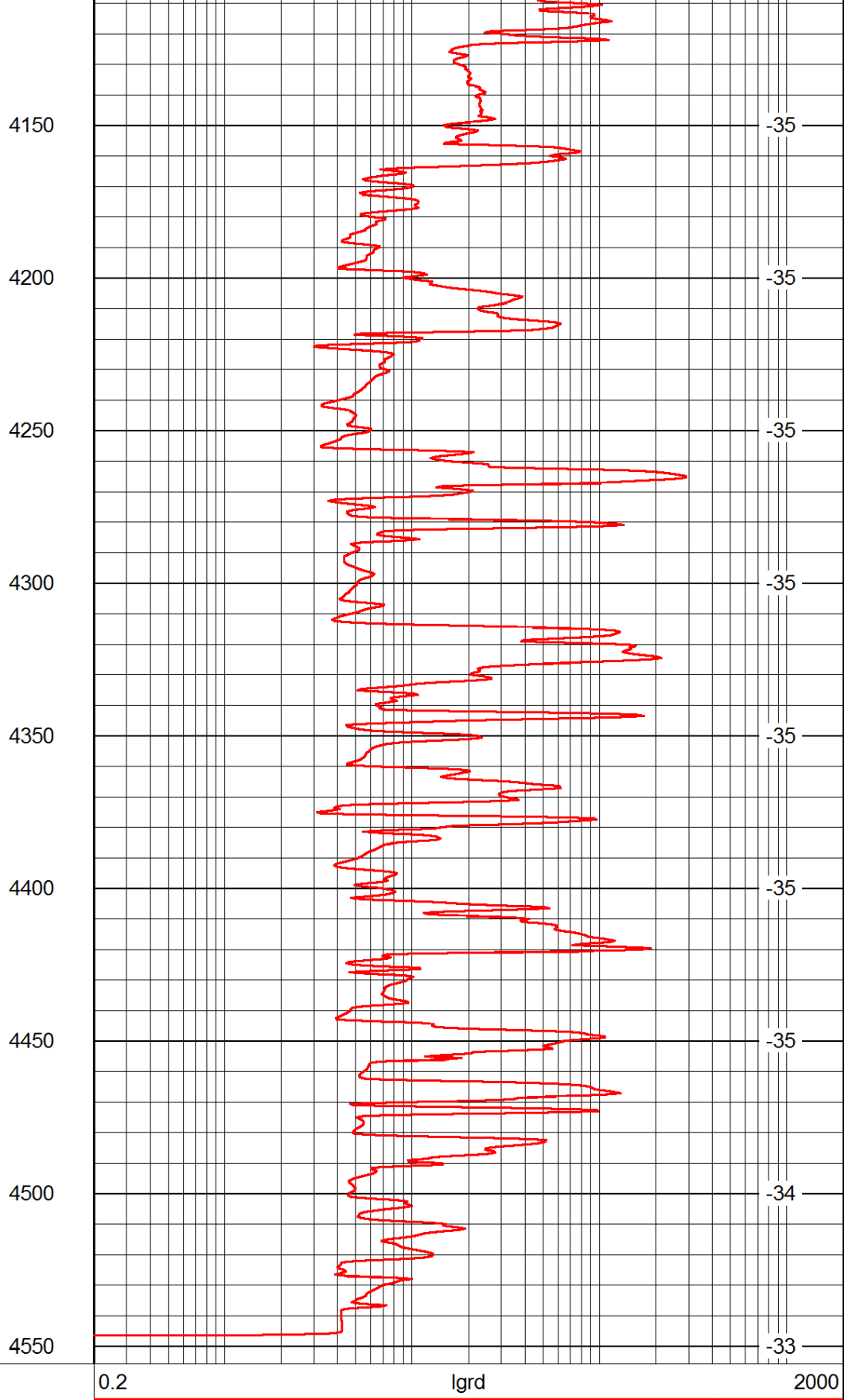
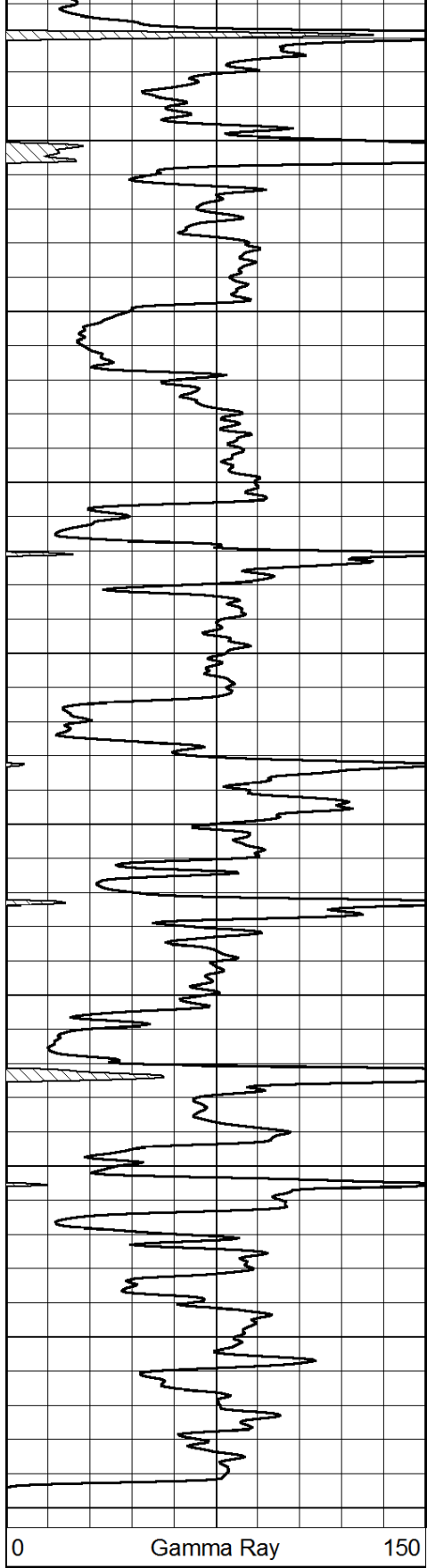
-34

-34

-33

-36

-35



Database File: c:\warrior\data\berexco_michael #3-23\berexco_michael_3-23hd.db
 Dataset Pathname: rag/berrag
 Presentation Format: rag
 Dataset Creation: Mon Mar 17 22:39:02 2014
 Charted by: Depth in Feet scaled 1:240

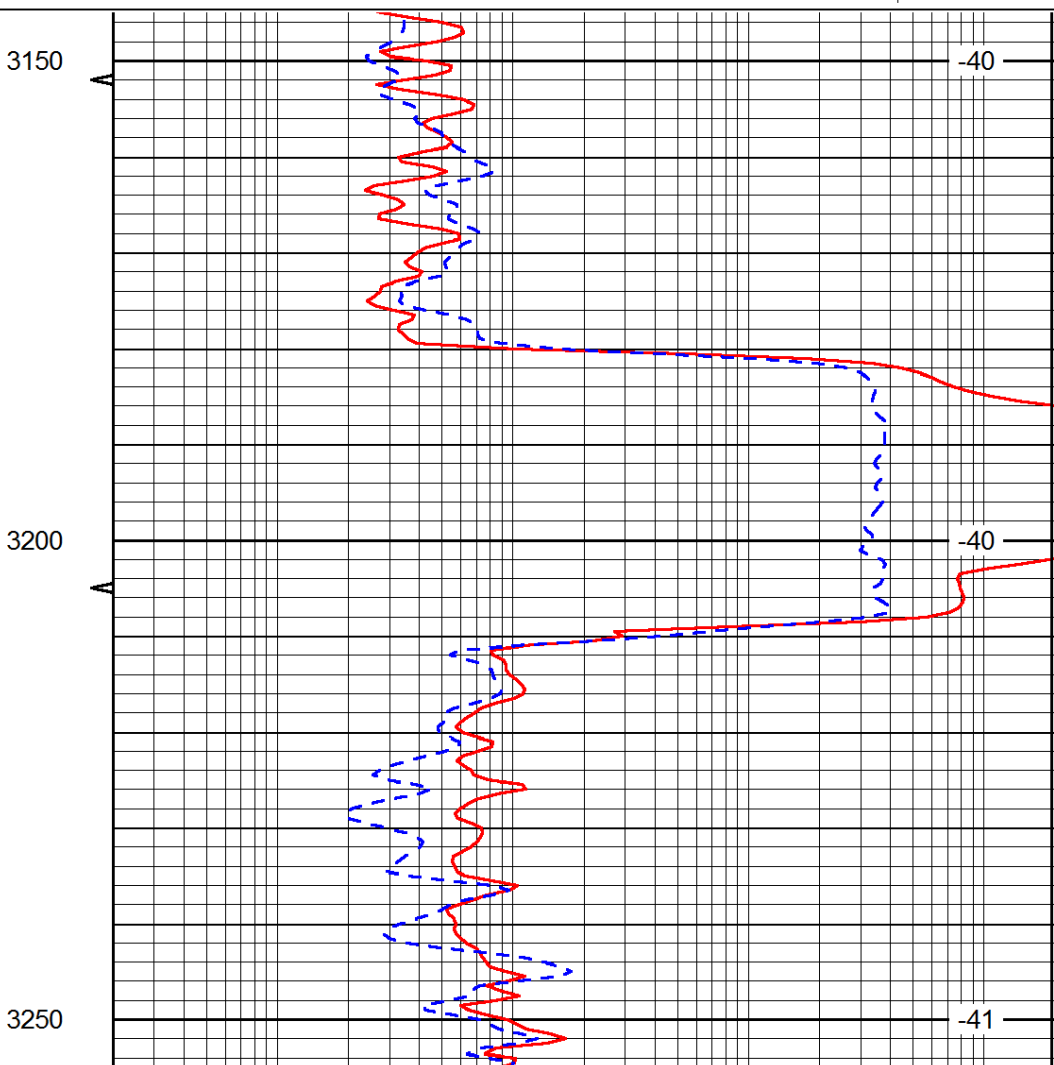
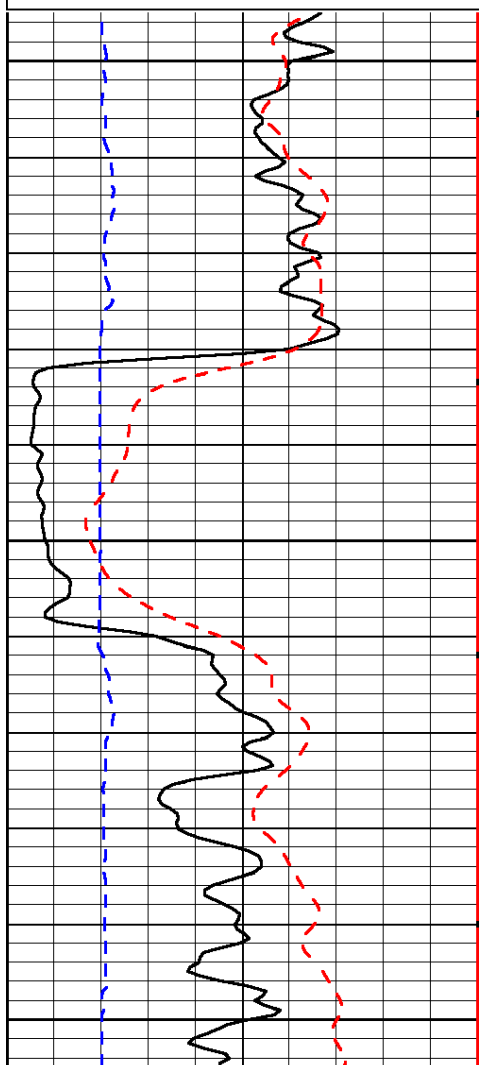
0 Gamma Ray 150

0.2 Long Guard 2000

6 Caliper (GAPI) 16
 -200 SP (mV) 0

560 Neutron 2160
 15000 Line Tension 0

LSPD



0 Gamma Ray 150
 6 Caliper (GAPI) 16
 -200 SP (mV) 0

0.2 Long Guard 2000
 560 Neutron 2160
 15000 Line Tension 0

LSPD

Database File: c:\warrior\data\berexco_michael #3-23\berexco_michael_3-23hd.db
 Dataset Pathname: rag/berrag
 Presentation Format: rag
 Dataset Creation: Mon Mar 17 22:39:02 2014
 Charted by: Depth in Feet scaled 1:240

0 Gamma Ray 150
 6 Caliper (GAPI) 16
 -200 SP (mV) 0

0.2 Long Guard 2000
 560 Neutron 2160
 15000 Line Tension 0

LSPD

