



**MIDWEST SURVEYS**  
 LOGGING - PERFORATING - CONSULTING SERVICES  
 P.O. Box 68, Osawatomie, KS 66064  
 913 / 755 - 2128

**GAMMA RAY / NEUTRON / CCL**

File No. Company Kansas Resources Exploration

Well Joeckel No. KR-5

Field Paola - Rantoul

County Miami State Kansas

Location 2475' FSL & 3795' FEL  
 Other Services Perforate  
 NMI-NW-NE-SW

Sec. 13 Twp. 17s Rge. 22e  
 Permanent Datum GL Elevation 1039'  
 Log Measured From GL  
 Drilling Measured From GL  
 Elevation K.B. NA  
 D.F. NA  
 G.L. 1039'

Date 09-18-2014

Run Number One

Depth Driller 540.0

Depth Logger 503.0

Bottom Logged Interval 502.0

Top Log Interval 20.0

Fluid Level Full

Type Fluid Water

Density / Viscosity NA

Salinity - PPM Cl NA

Max Recorded Temp NA

Estimated Cement Top 0.0

Equipment No. Location 107 Osawatomie

Recorded By Steve Windisch

Witnessed By Brad Kramer

BORE-HOLE RECORD				CASING RECORD			
Run No.	BIT	FROM	TO	SIZE	WGT.	FROM	TO
One	9.875"	0.0	20.0	7.00"	14.0 #	0.0	20.0
Two	5.875"	20.0	540.0	2.875"	6.5 #	0.0	535.95
				Baffle	Set	At	504.70

<<< Fold Here >>>

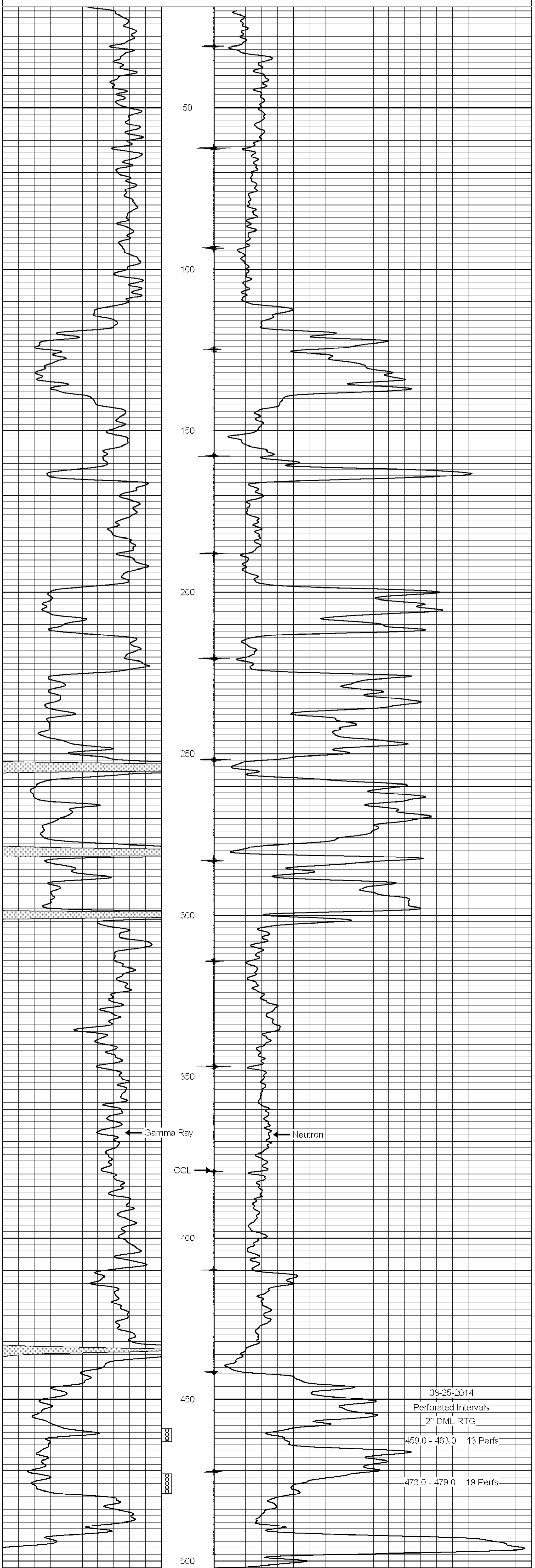
All interpretations are opinions based on inferences from electrical or other measurements and we cannot and do not guarantee the accuracy or correctness of any interpretation, and we shall not, except in the case of gross or willful negligence on our part, be liable or responsible for any loss, costs, damages, or expenses incurred or sustained by anyone resulting from any interpretation made by any of our officers, agents or employees. These interpretations are also subject to our general terms and conditions set out in our current Price Schedule.

Comments

Drilling Contractor :  
 Utah Oil, LLC

Database File: joeckel 5kr.db  
 Dataset Pathname: pass1  
 Presentation Format: gr-n-ccl  
 Dataset Creation: Mon Aug 18 15:26:41 2014 by Log SCH 111116  
 Charted by: Depth in Feet scaled 1:240

0	Gamma Ray (cps)	150	-1 CCL 1	10	Neutron (cps)	2100
150	Gamma Ray (cps)	300				



0	Gamma Ray (cps)	150	-1 CCL 1	10	Neutron (cps)	2100
150	Gamma Ray (cps)	300				