



**WIRELINE  
SERVICES, INC.**  
CHANUTE, KANSAS

**GAMMA RAY  
NEUTRON  
COMPLETION LOG**

Company GRASS HOPPER OIL COMPANY  
Well KNOWLES #3  
Field UNNAMED  
County WOODSON  
State KANSAS

Company GRASS HOPPER OIL COMPANY  
Well KNOWLES #3  
Field UNNAMED  
County WOODSON State KANSAS

Location: API # : 15-207-28951-00-00 Other Services  
880' FNL & 170' FWL  
NW SW NW NW  
SEC 4 TWP 26S RGE 15E  
Permanent Datum GL Elevation 1100'EST  
Log Measured From GL K.B.  
Drilling Measured From GL D.F.  
G.L. 1100'EST.

Date	7-23-14		
Run Number	1 NW		
Depth Driller	1225'		
Depth Logger	1221.8'		
Top Log Interval	0		
Bottom Logged Interval	1221.8'		
Fluid Level	FULL		
Type Fluid	WATER		
Production Casing	2 7/8" @ TD	@	@
Max. Recorded Temp.			
Estimated Cement Top			
Calculated Cement Top			
Amount & Type Cement			
Amount & Type Admix			
Drilling Contractor			
Equipment Number	103		
Location			
Recorded By	SOLOMON, B.		
Witnessed By	KNOWLES, D.		

<<< Fold Here >>>

All interpretations are opinions based on inferences from electrical or other measurements and we cannot and do not guarantee the accuracy or correctness of any interpretation, and we shall not, except in the case of gross or willful negligence on our part, be liable or responsible for any loss, costs, damages, or expenses incurred or sustained by anyone resulting from any interpretation made by any of our officers, agents or employees. These interpretations are also subject to our general terms and conditions set out in our current Price Schedule.

Comments

THANK YOU

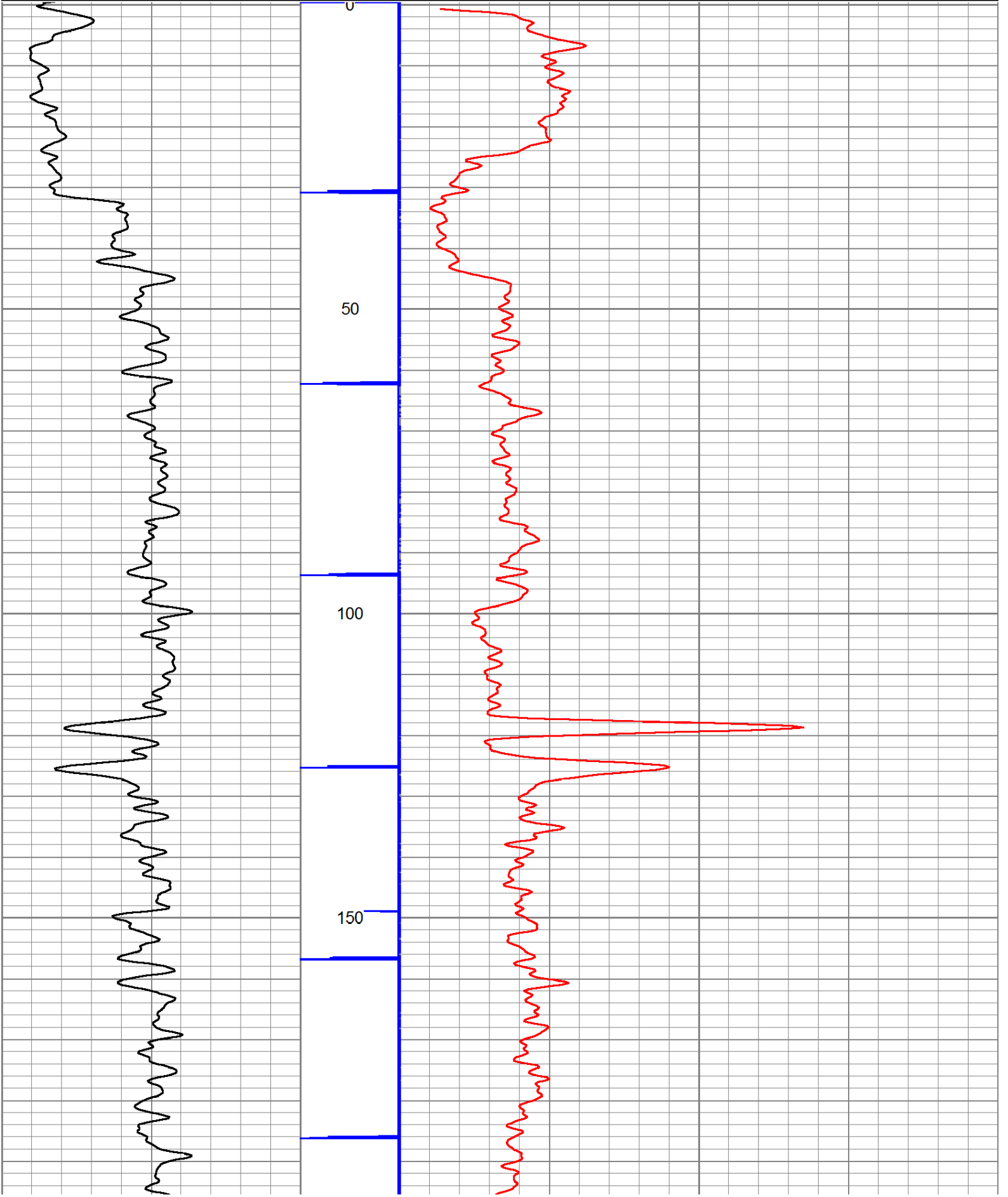
Sensor	Offset (ft)	Schematic	Description	Len (ft)	OD (in)	Wt (lb)

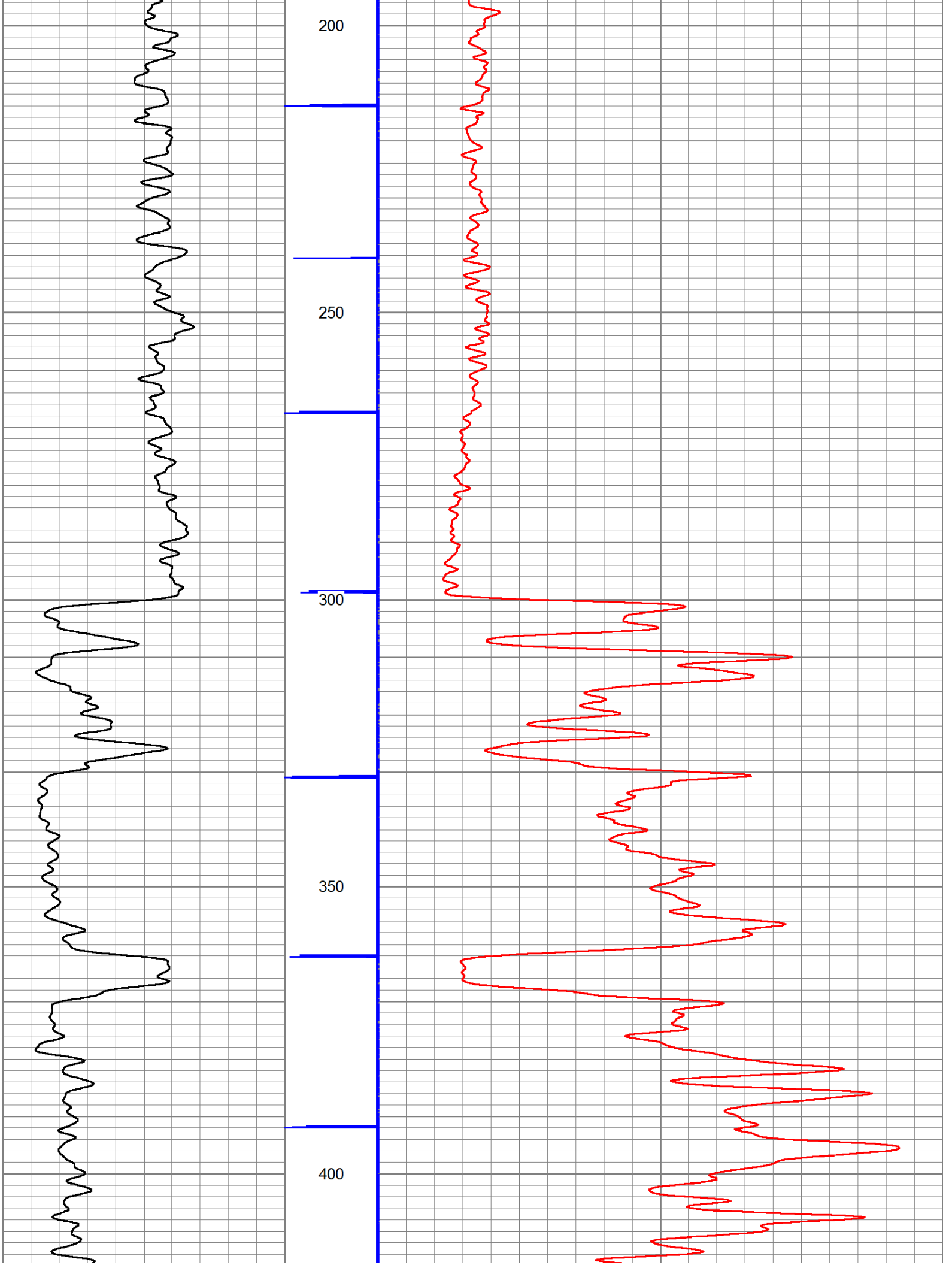
GR	7.59		GR-TITAN_169 (TIT169_001) Titan 1 11/16" Gamma Ray	4.75	1.69	20.00
CCL	5.05		CCL-TITAN_169 (TIT169) Titan 1 11/16" Logging CCL	1.83	1.69	7.50
NEU	0.63		NEU-TITAN (TIT801) TITAN 1 11/16" Neutron	4.33	1.69	25.00

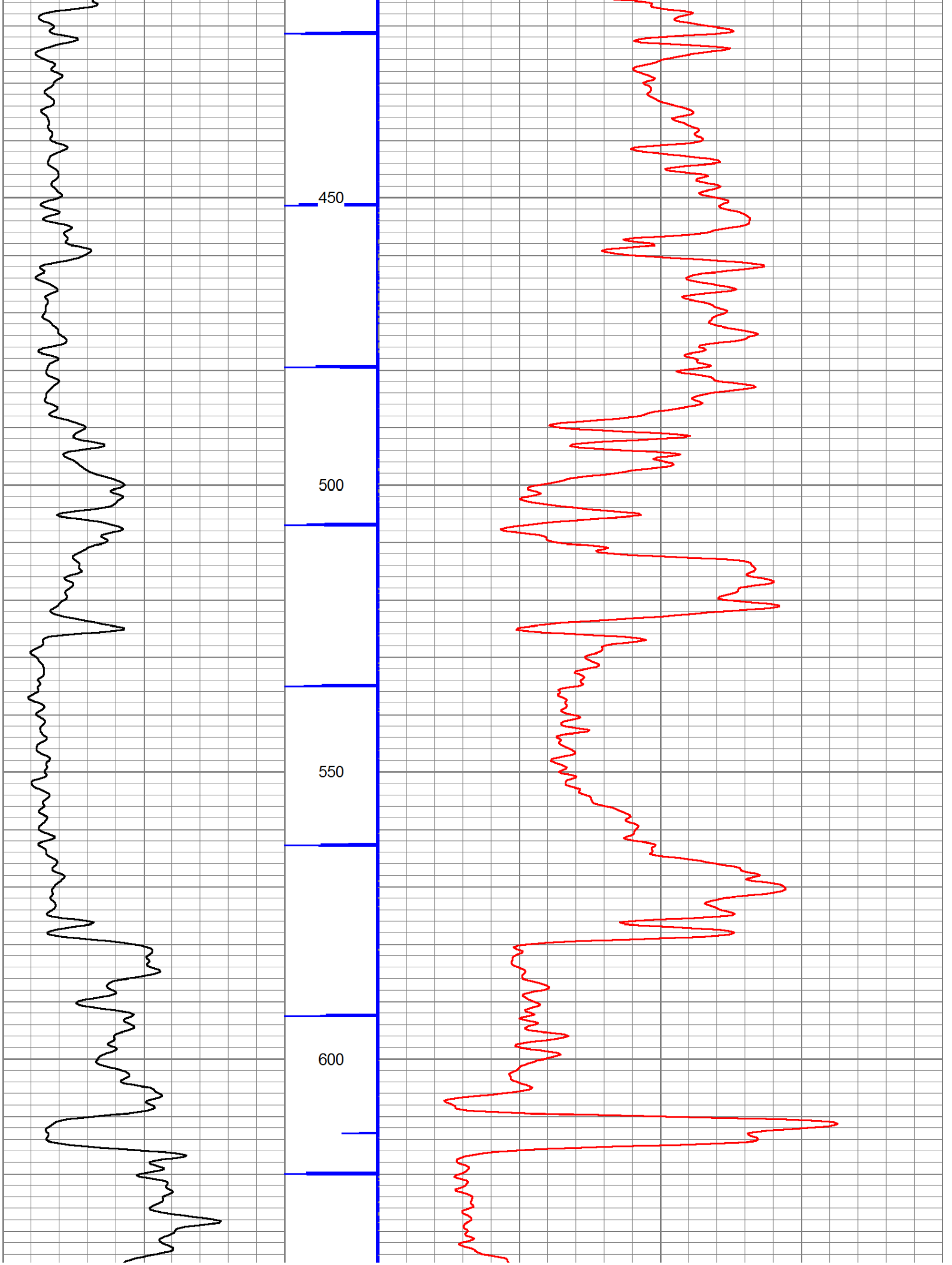
Dataset: knowles #3.db: field/well/run1/pass1  
 Total Length: 10.92 ft  
 Total Weight: 52.50 lb  
 O.D.: 1.69 in

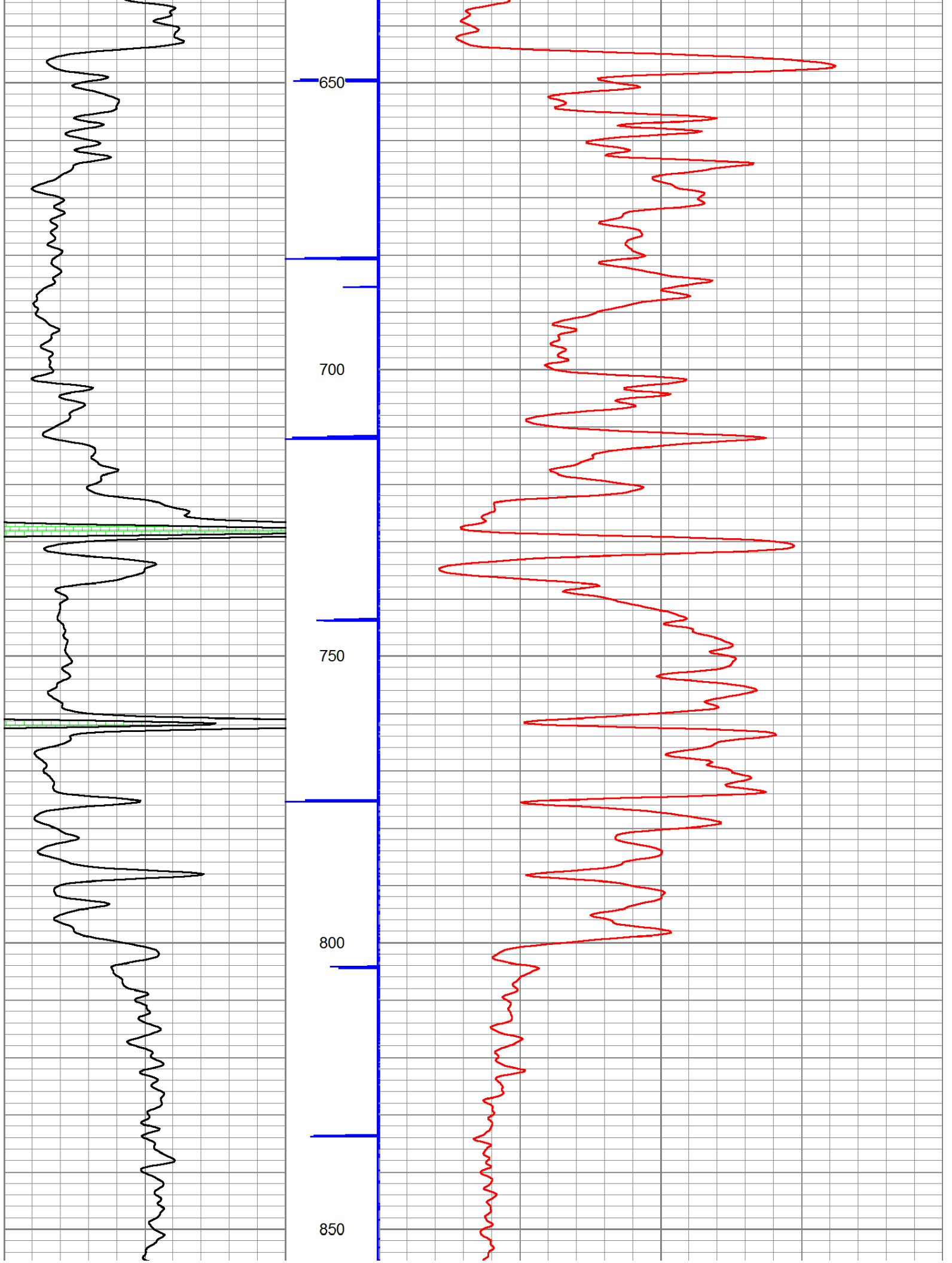
Database File: e:\knowles #3.db  
 Dataset Pathname: pass1  
 Presentation Format: gr-n-ccl

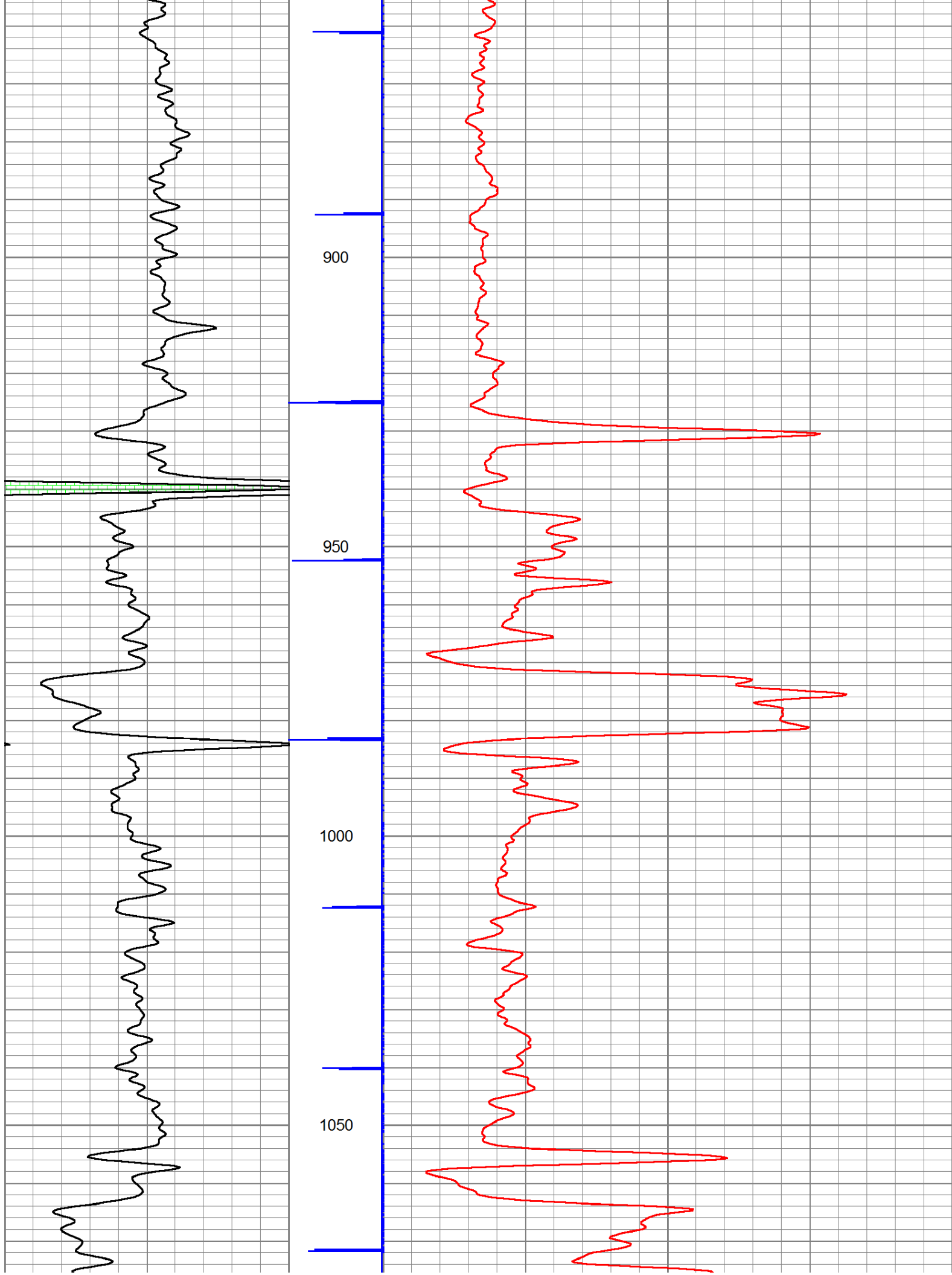
150	gr	300	3	CCLJ.05	100	NEU (cps)	1800
0	GR	150					

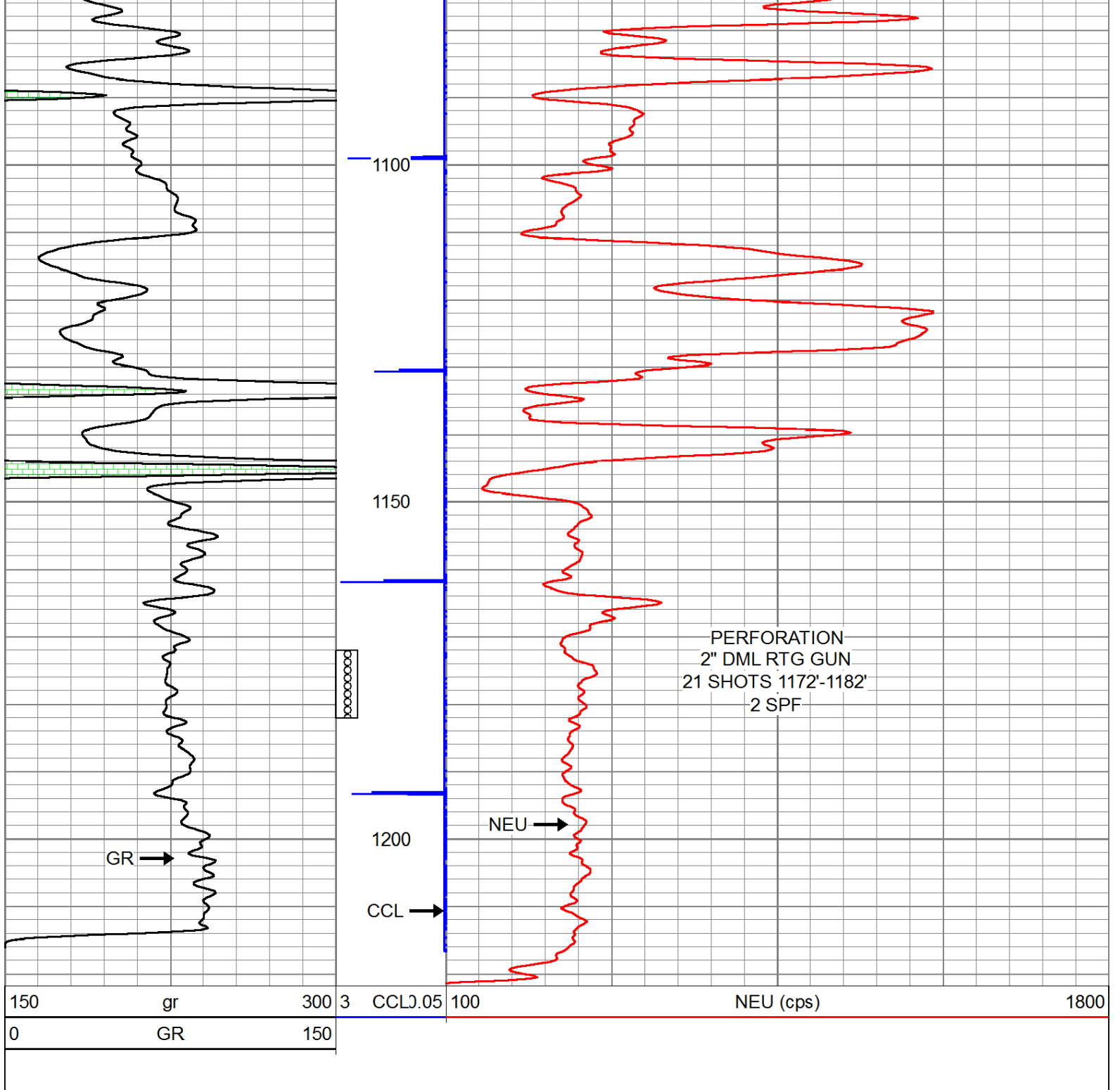












Company	GRASS HOPPER OIL COMPANY
Well	KNOWLES #3
Field	UNNAMED
County	WOODSON SEC. 4 TWP. 26S RGE. 15E
State	KANSAS
Date	7-23-14