



**COMPLETION
& PRODUCTION
SERVICES CO.**

**COMPENSATED
DENSITY / NEUTRON
PE LOG**

Company WOOLSEY OPERATING COMPANY, LLC
Well CUNNINGHAM #7
Field BLOOM NORTH
County BARBER
State KANSAS

Company WOOLSEY OPERATING COMPANY, LLC
Well CUNNINGHAM #7
Field BLOOM NORTH
County BARBER State KANSAS

Location: API # : 15-007-24232-00-00
405' FSL & 810' FEL
NE - SW - SE - SE
SEC 10 TWP 32S RGE 12W
Permanent Datum GROUND LEVEL Elevation 1512
Log Measured From KELLY BUSHING 12' A.G.L.
Drilling Measured From KELLY BUSHING
Other Services
Elevation
DIL
K.B. 1524
D.F. 1522
G.L. 1512

Date	11/9/14		
Run Number	ONE		
Depth Driller	4770		
Depth Logger	4770		
Bottom Logged Interval	4746		
Top Log Interval	1750		
Casing Driller	13 3/8" @ 234'		
Casing Logger	231'		
Bit Size	7.875		
Type Fluid in Hole	CHEMICAL MUD	CHLORIDES 7,000 PPM	
Density / Viscosity	8.9/10		
pH / Fluid Loss	9.5/10.8		
Source of Sample	FLOWLINE		
Rm @ Meas. Temp	1.90 @ 50F		
Rmt @ Meas. Temp	1.43 @ 50F		
Rmc @ Meas. Temp	2.28 @ 50F		
Source of Rmf / Rmc	MEASURED		
Rm @ BHT	0.77 @ 123F		
Time Circulation Stopped	2 HOURS		
Time Logger on Bottom			
Maximum Recorded Temperature	123F		
Equipment Number	4010		
Location	HAYS, KS.		
Recorded By	IAN MABB		
Witnessed By	BILL KLAVER		

<<< Fold Here >>>

All interpretations are opinions based on inferences from electrical or other measurements and we cannot and do not guarantee the accuracy or correctness of any interpretation, and we shall not, except in the case of gross or willful negligence on our part, be liable or responsible for any loss, costs, damages, or expenses incurred or sustained by anyone resulting from any interpretation made by any of our officers, agents or employees. These interpretations are also subject to our general terms and conditions set out in our current Price Schedule.

Comments

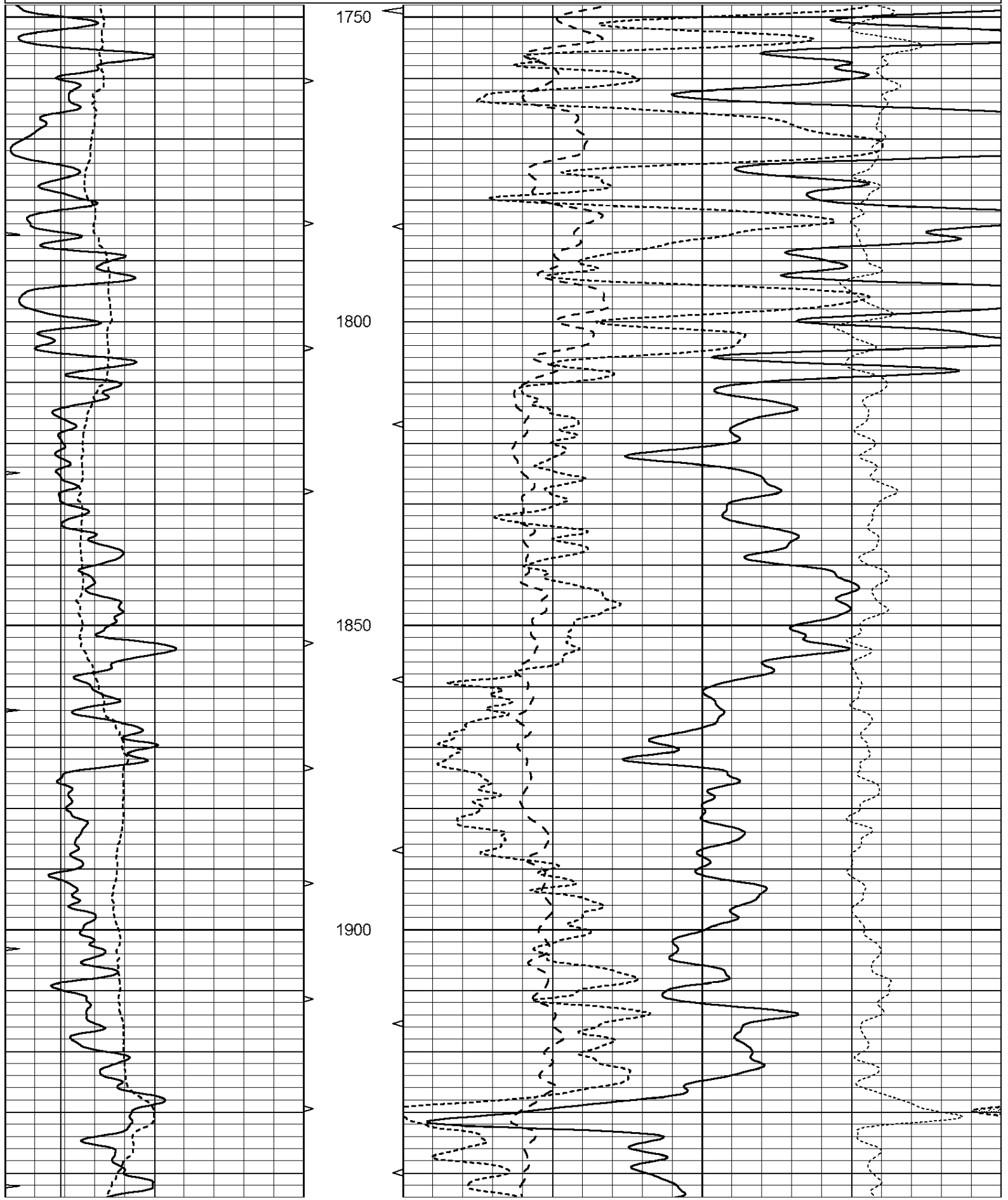
**NABORS COMPLETION & PRODUCTION SERVICES
785-628-6395**

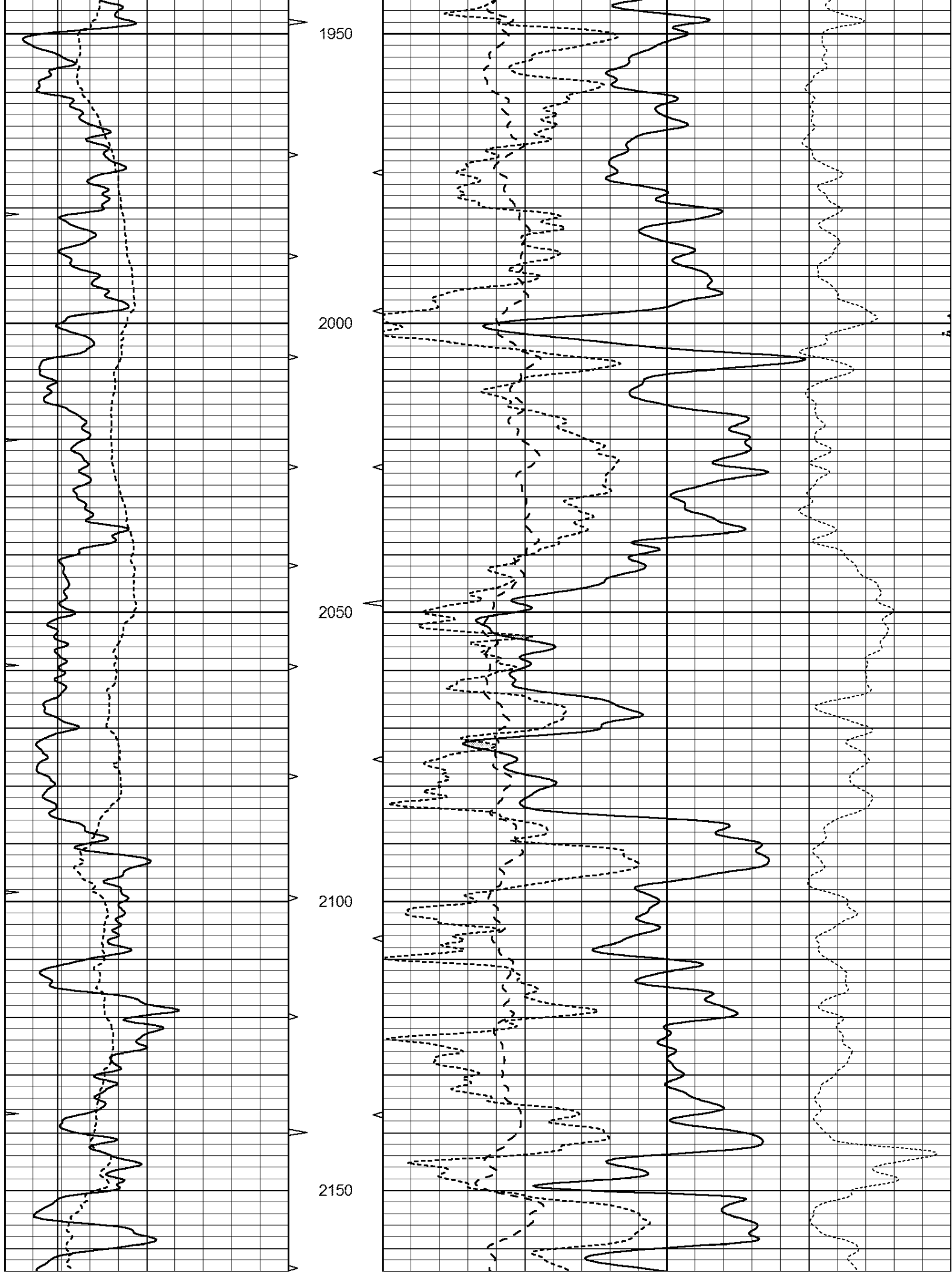
THANK YOU FOR YOUR BUSINESS

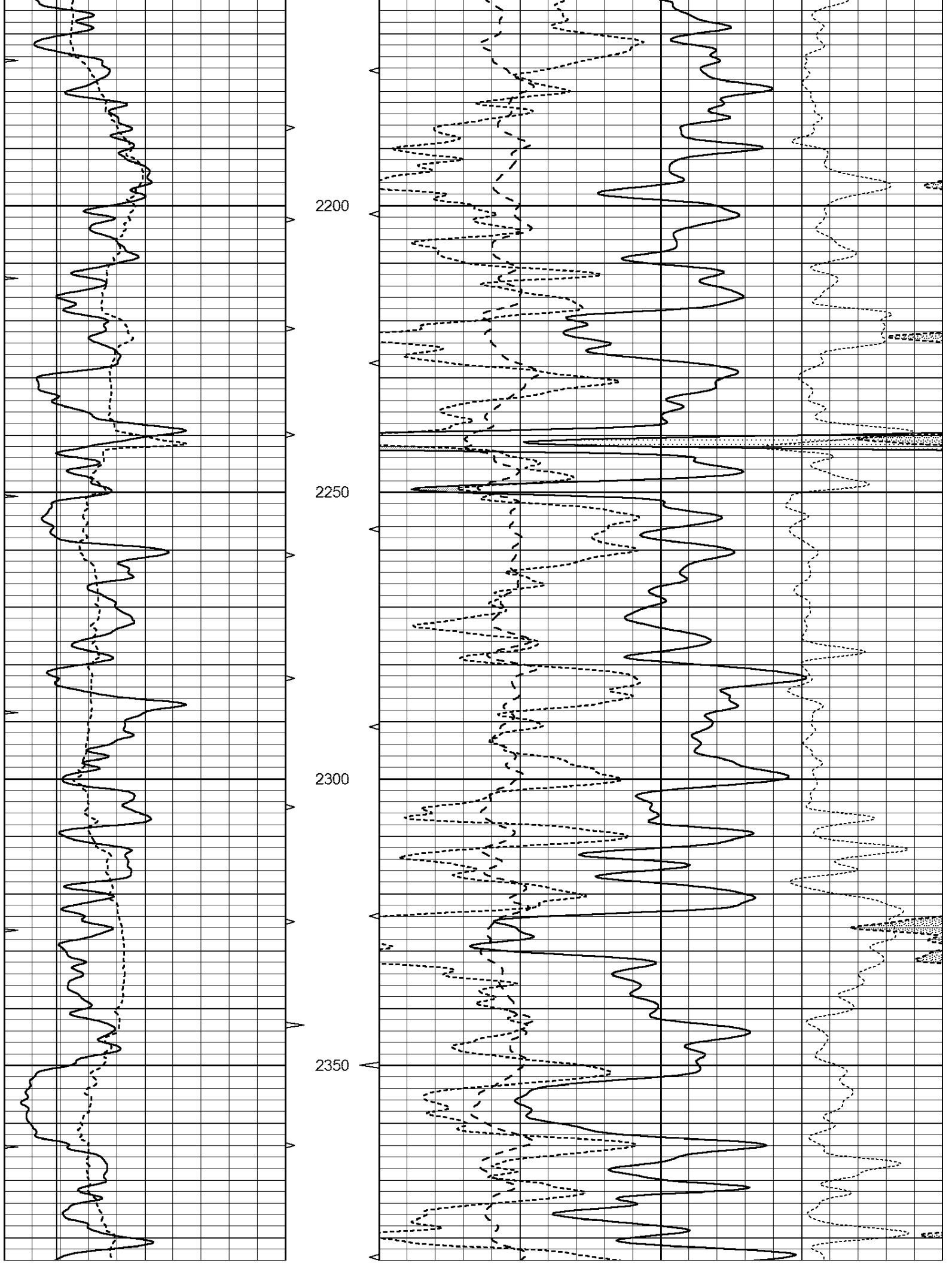
MEDICINE LODGE, KS. - WEST 1 1/2 MILE TO RED ROCK RD. - SOUTH 1/2 MILE WEST AND SOUTH INT

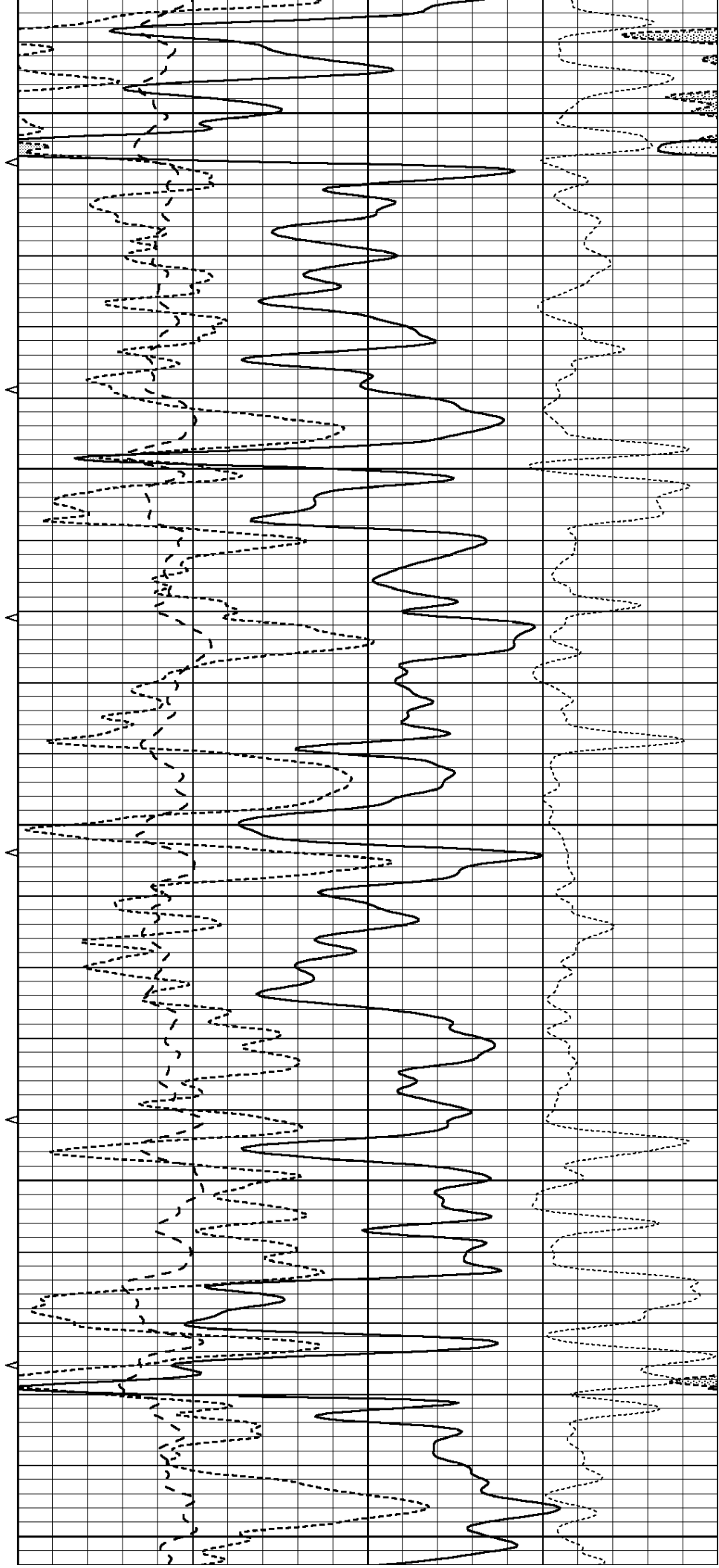
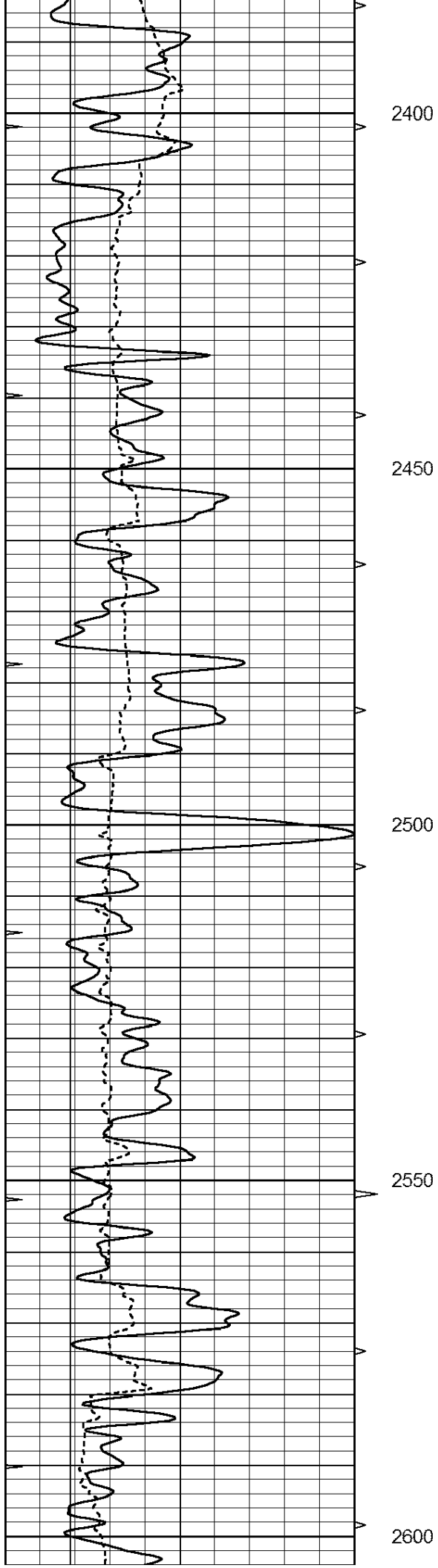
Database File: 26401pe.db
Dataset Pathname: pass3.3
Presentation Format: _ldt_neu
Dataset Creation: Sun Nov 09 08:03:32 2014 by Calc Open-Cased 090629
Charted by: Depth in Feet scaled 1:240

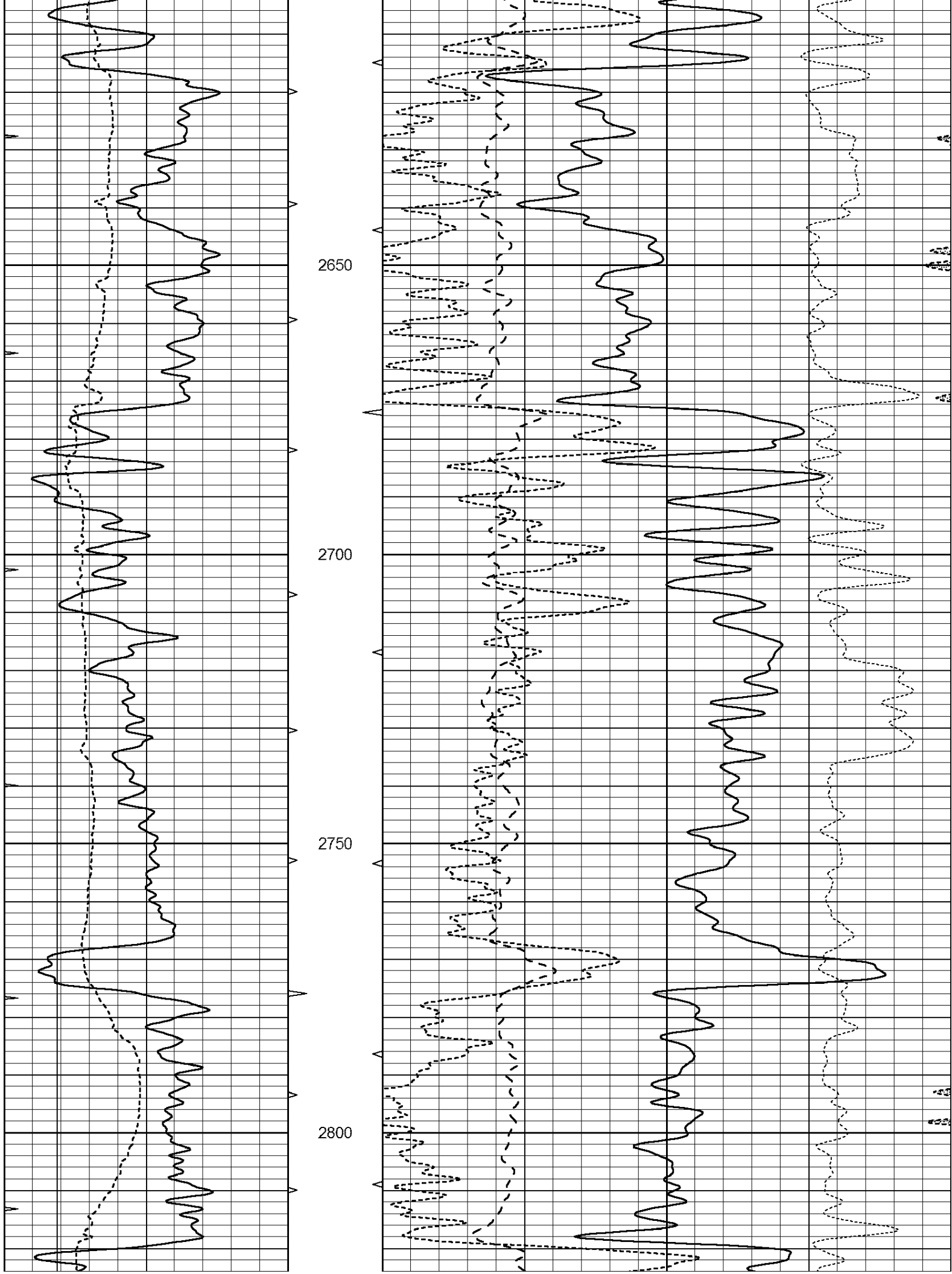
0	GAMMA RAY (GAPI)	150	ABHV	30	COMPENSATED DENSITY (pu)		-10		
6	CALIPER (in)	16	10 (ft3)	0	30	COMPENSATED NEUTRON (pu)		-10	
0	MINMK	20	TBHV	0	PE	10	-0.25	CORRECTION (g/cc)	0.25
			0 (ft3)	10					

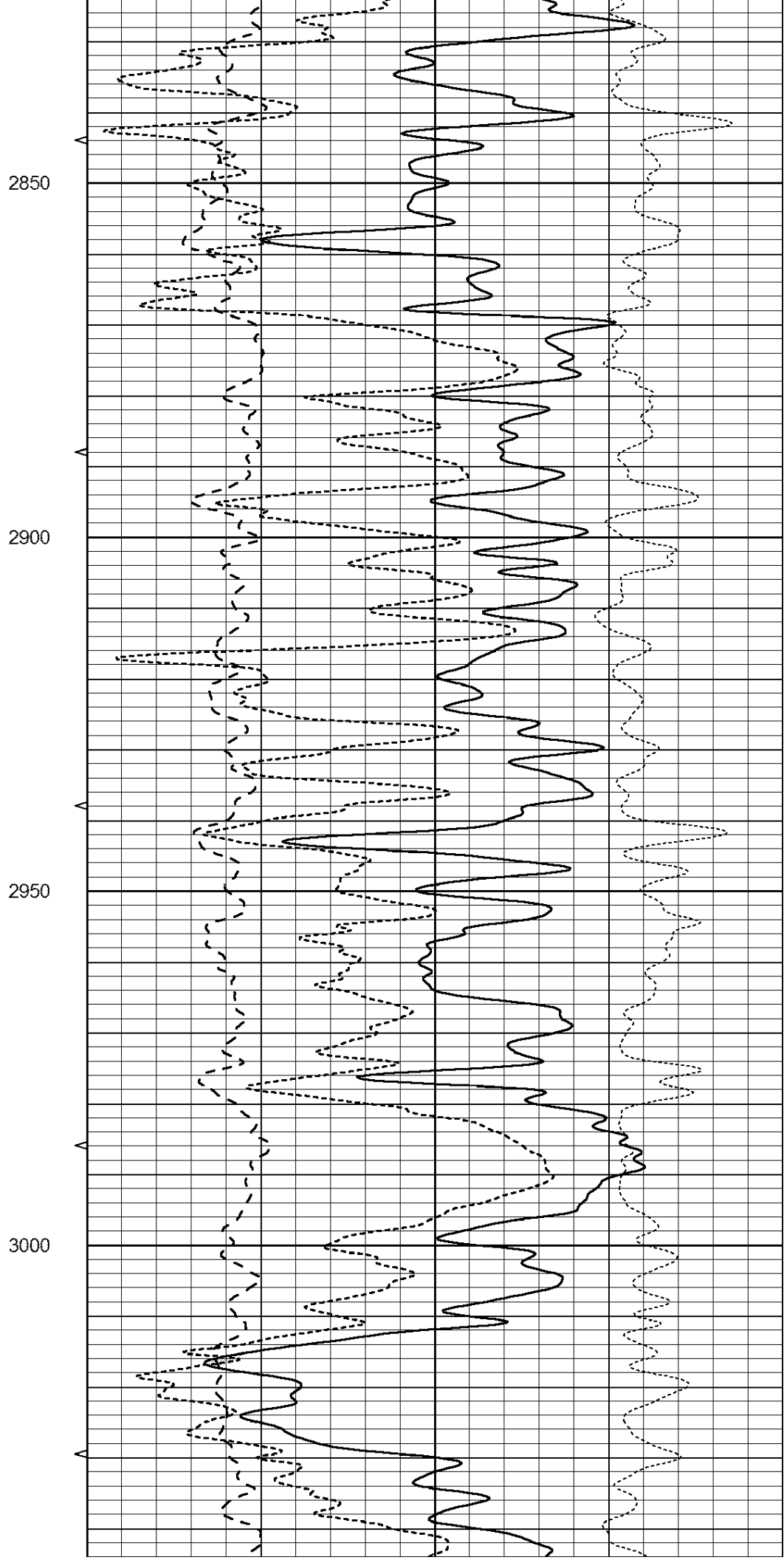
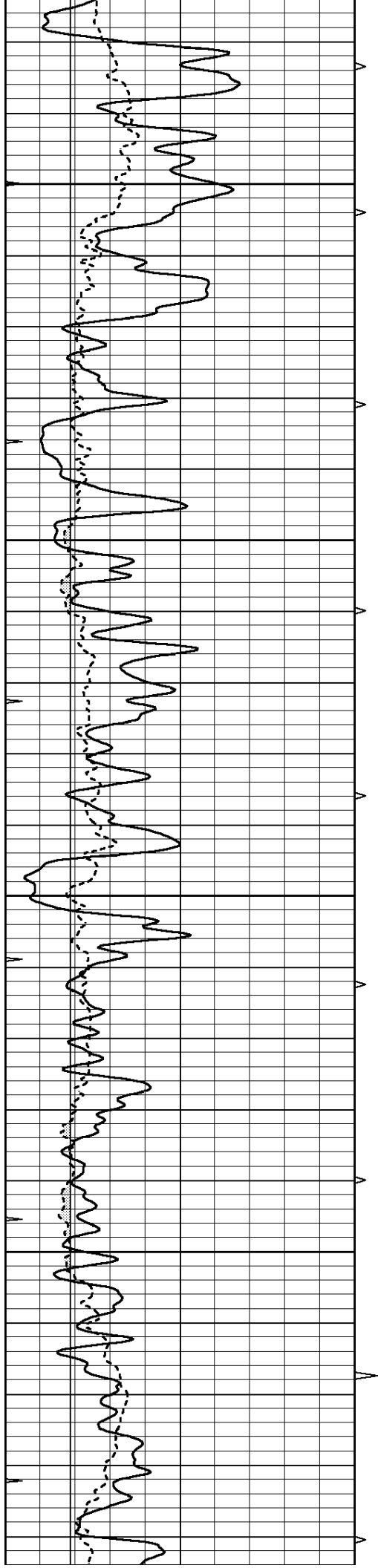


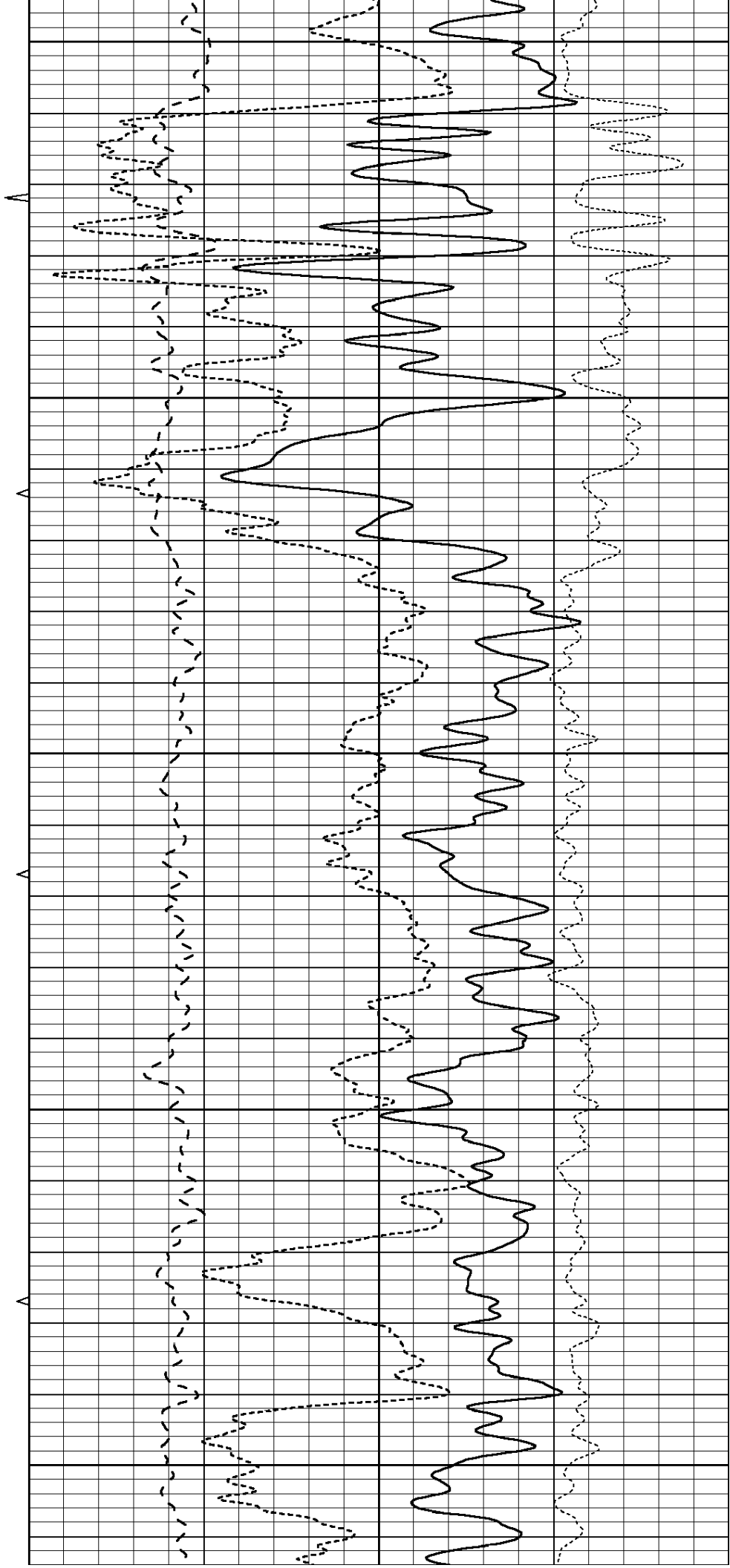
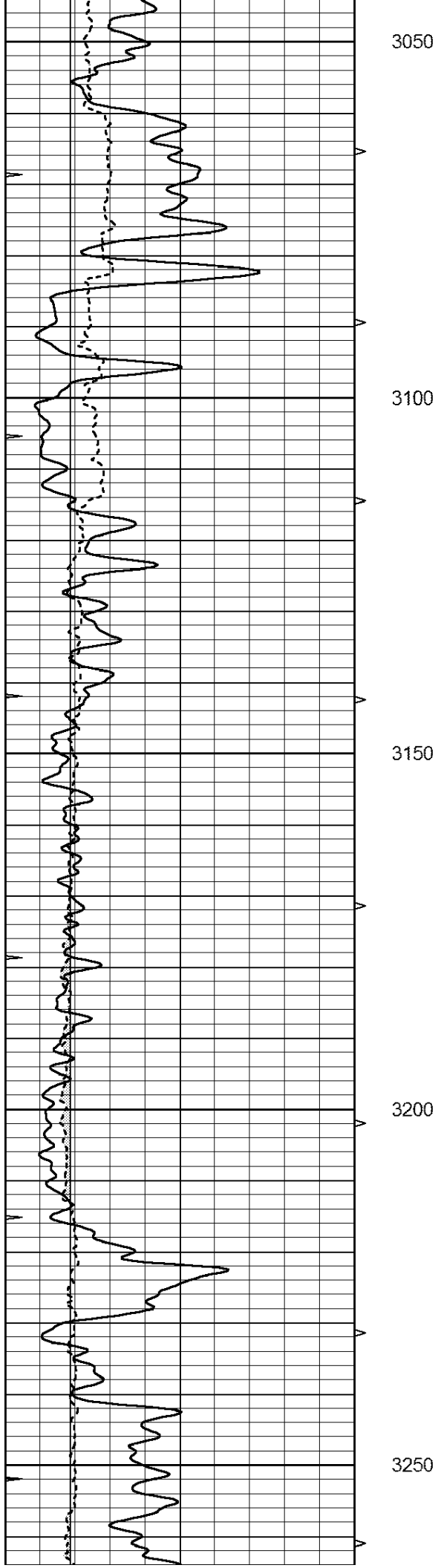


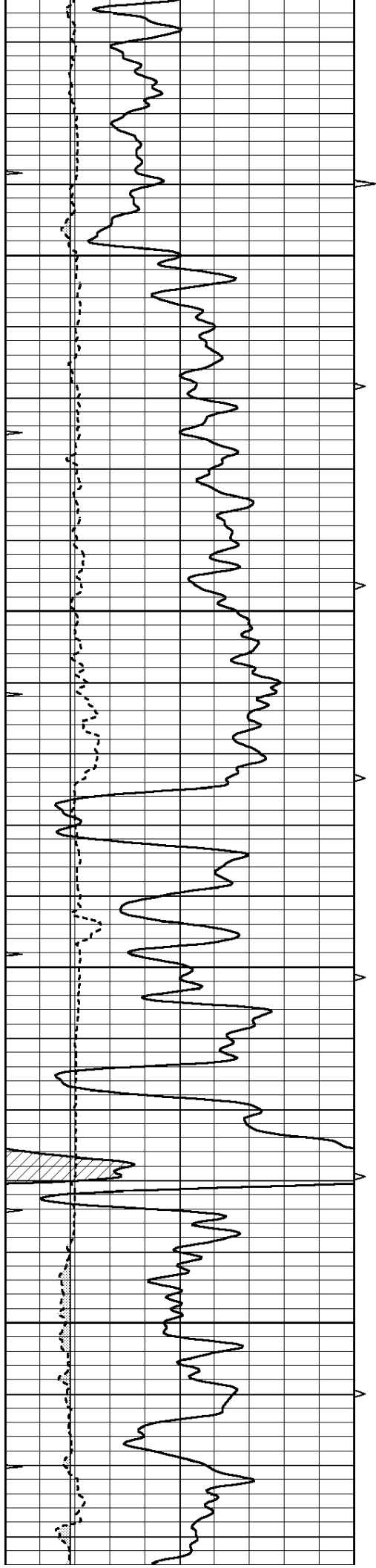










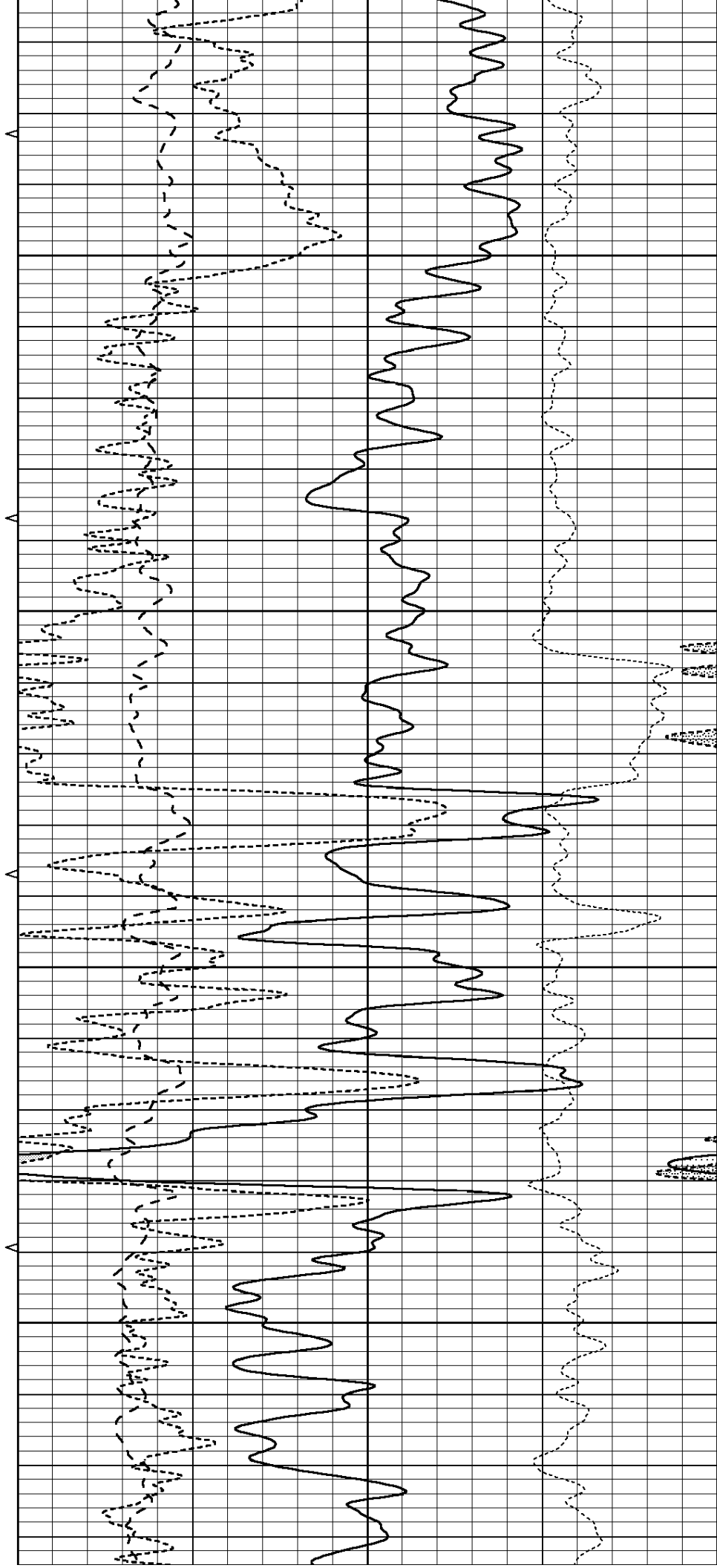


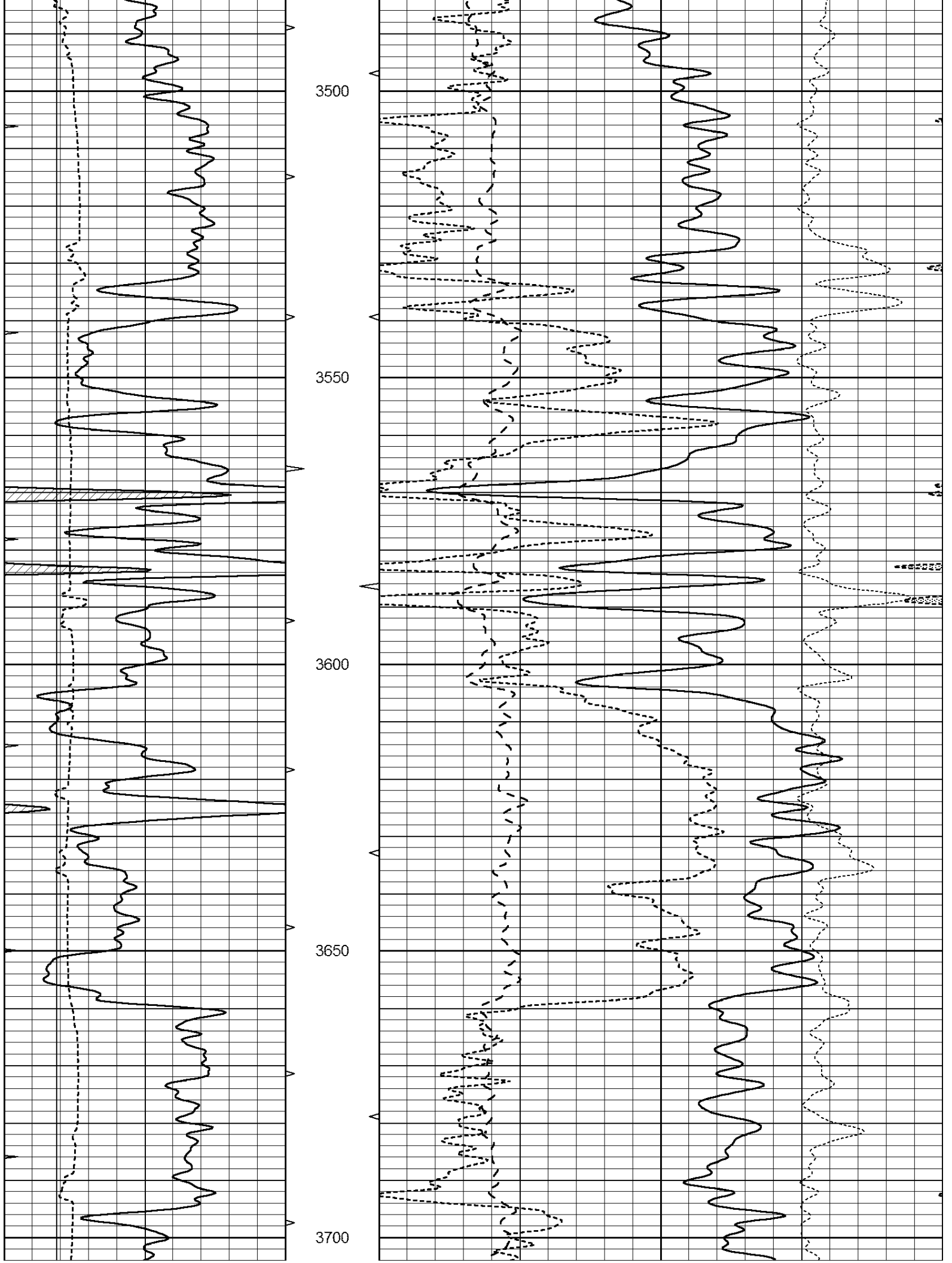
3300

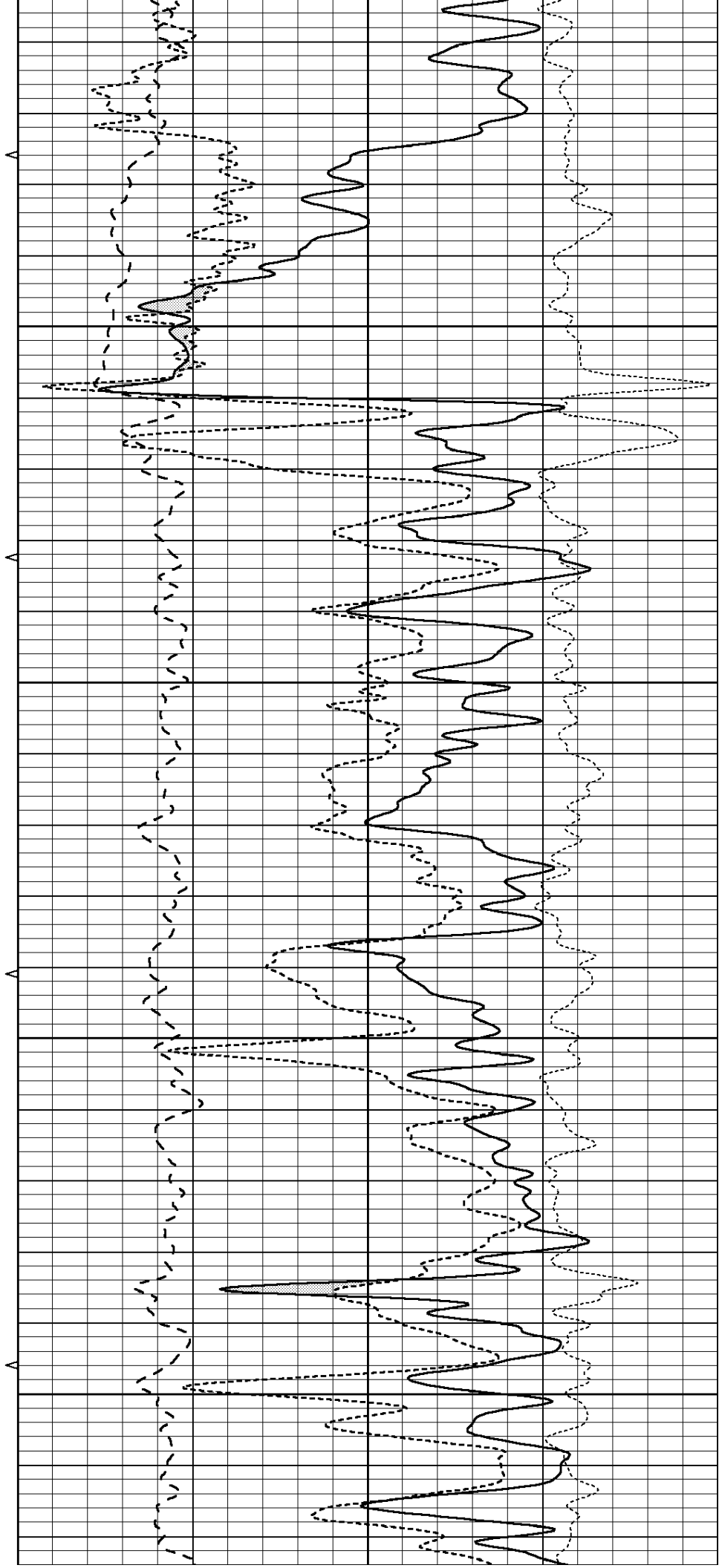
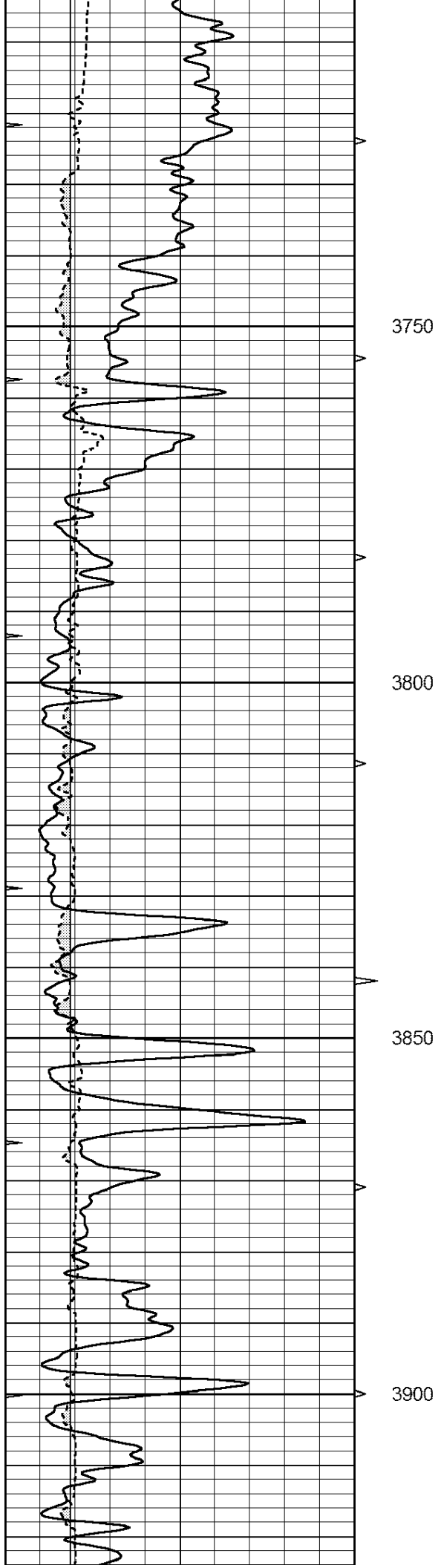
3350

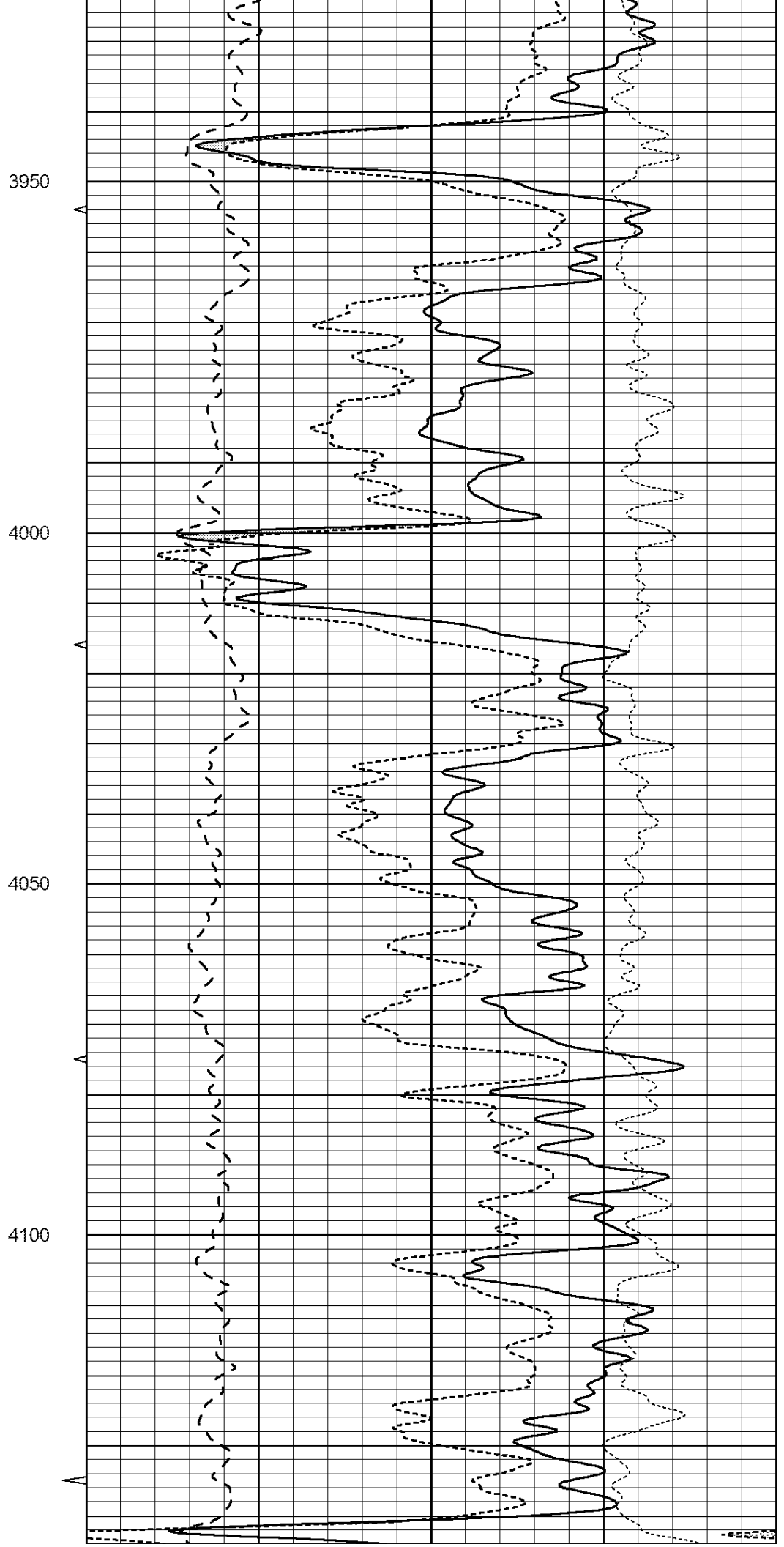
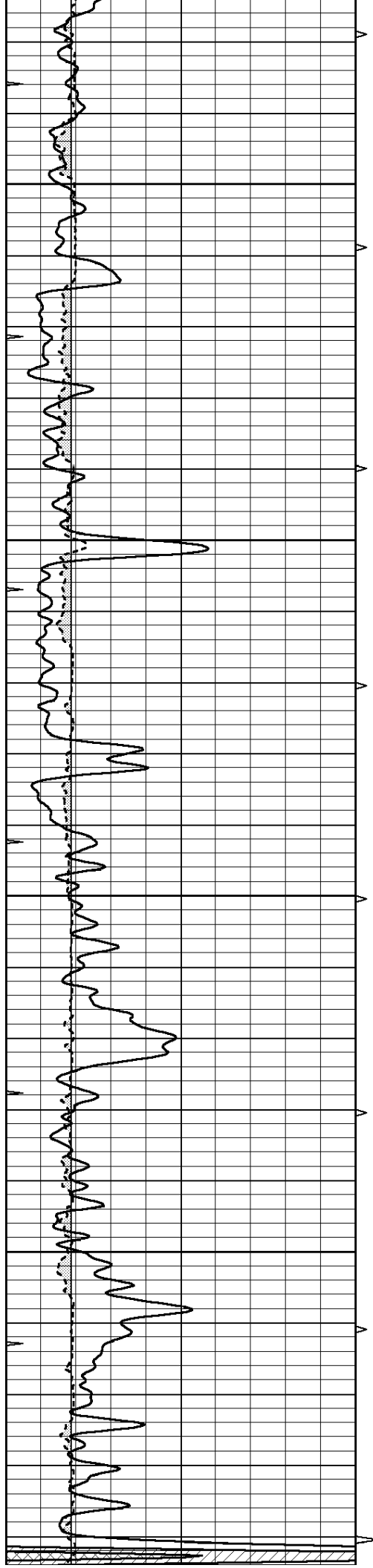
3400

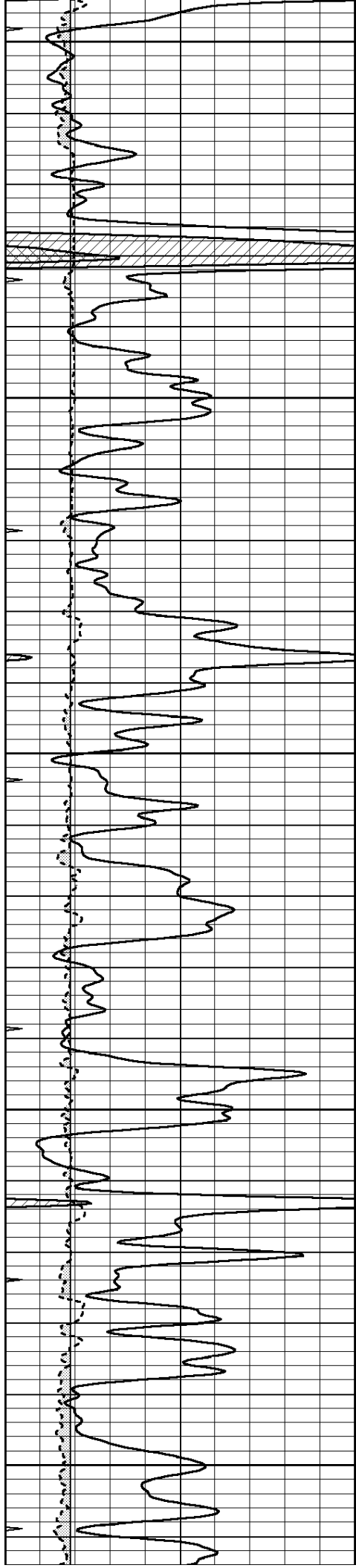
3450











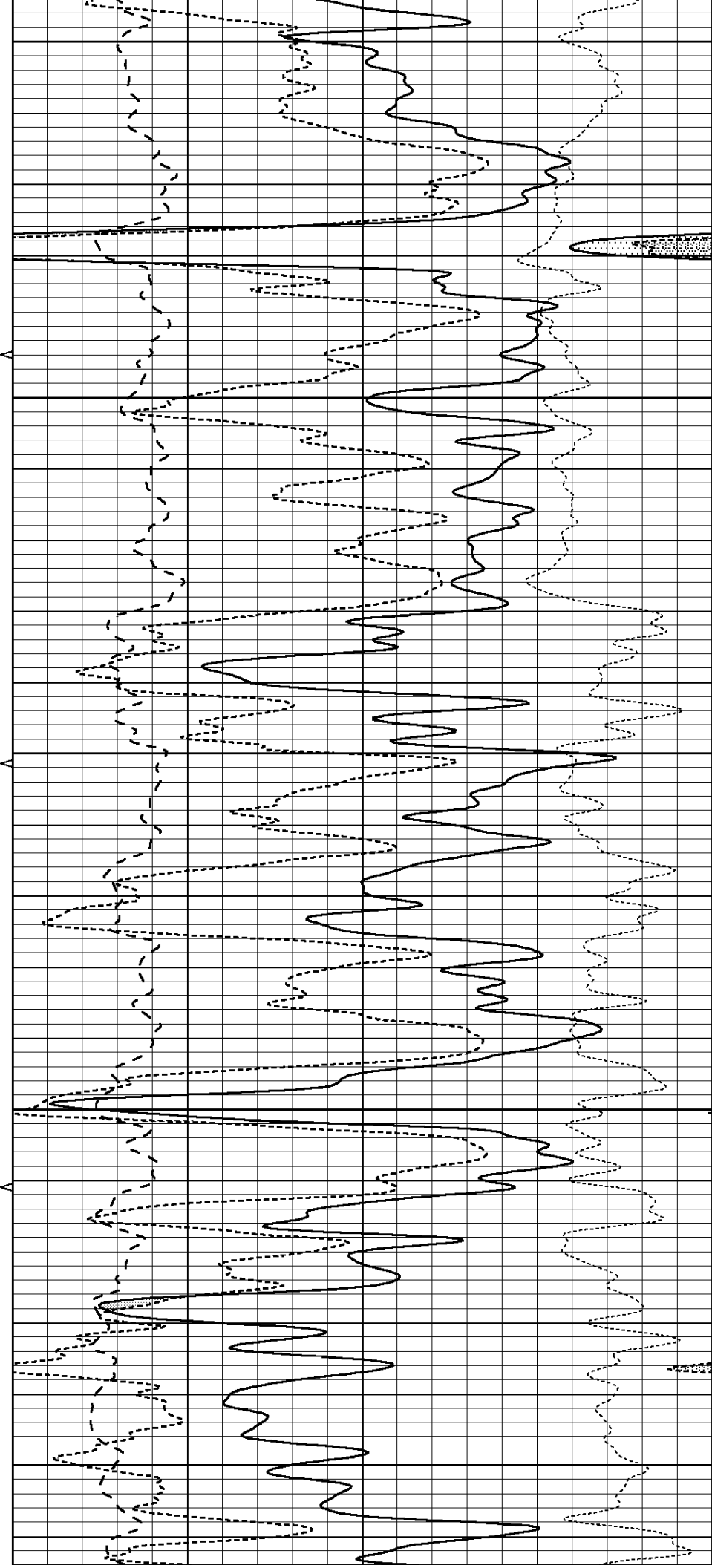
4150

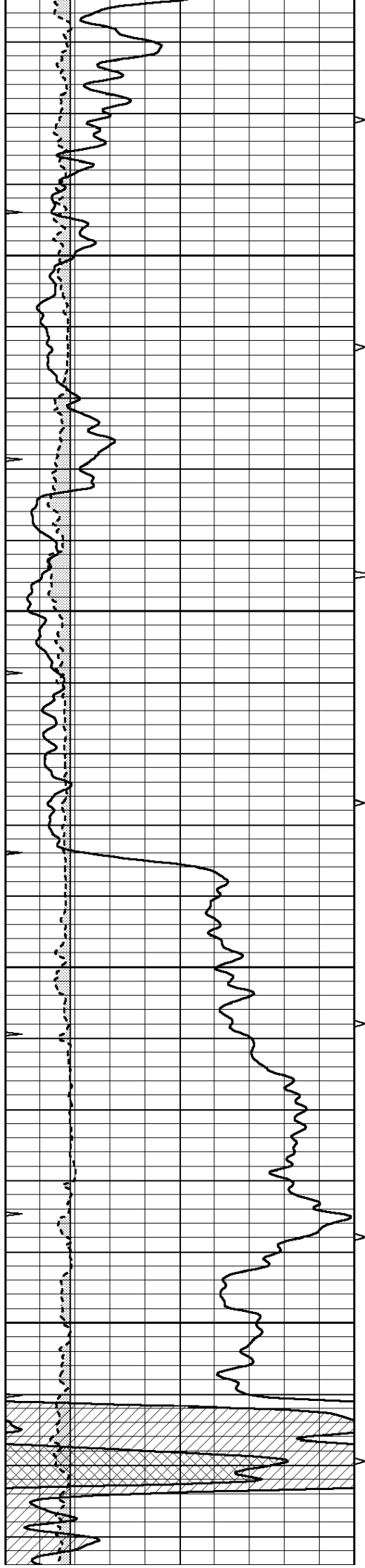
4200

4250

4300

4350



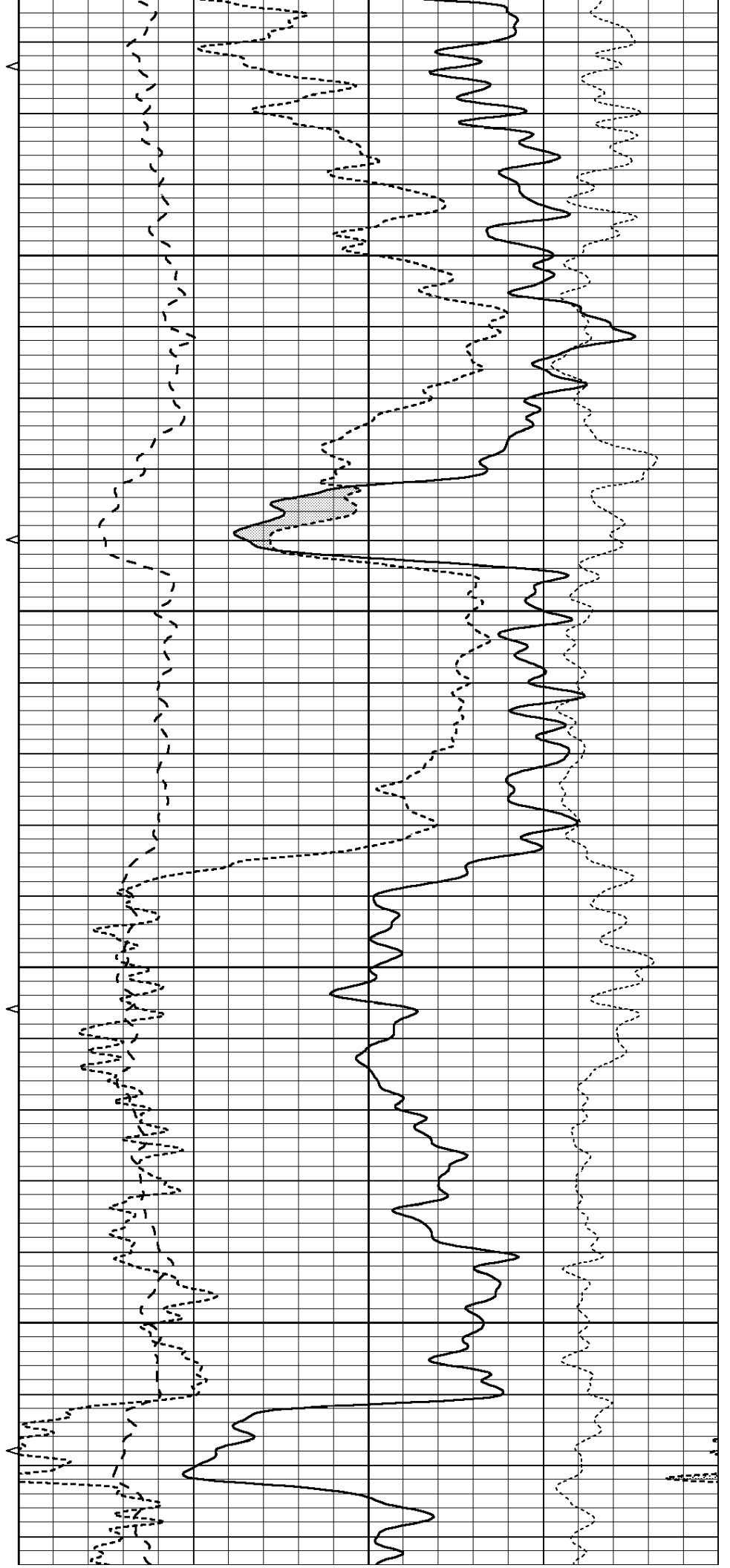


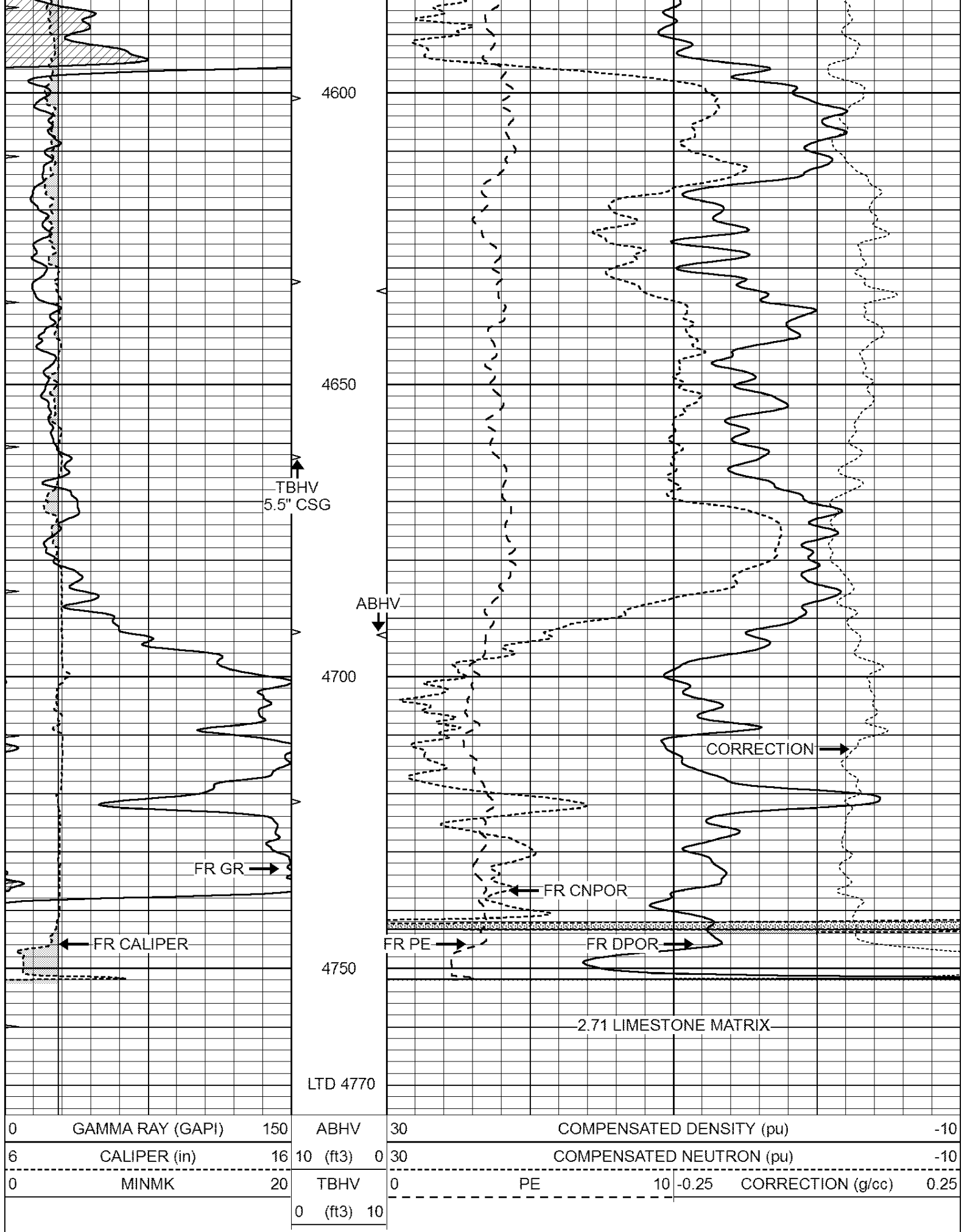
4400

4450

4500

4550

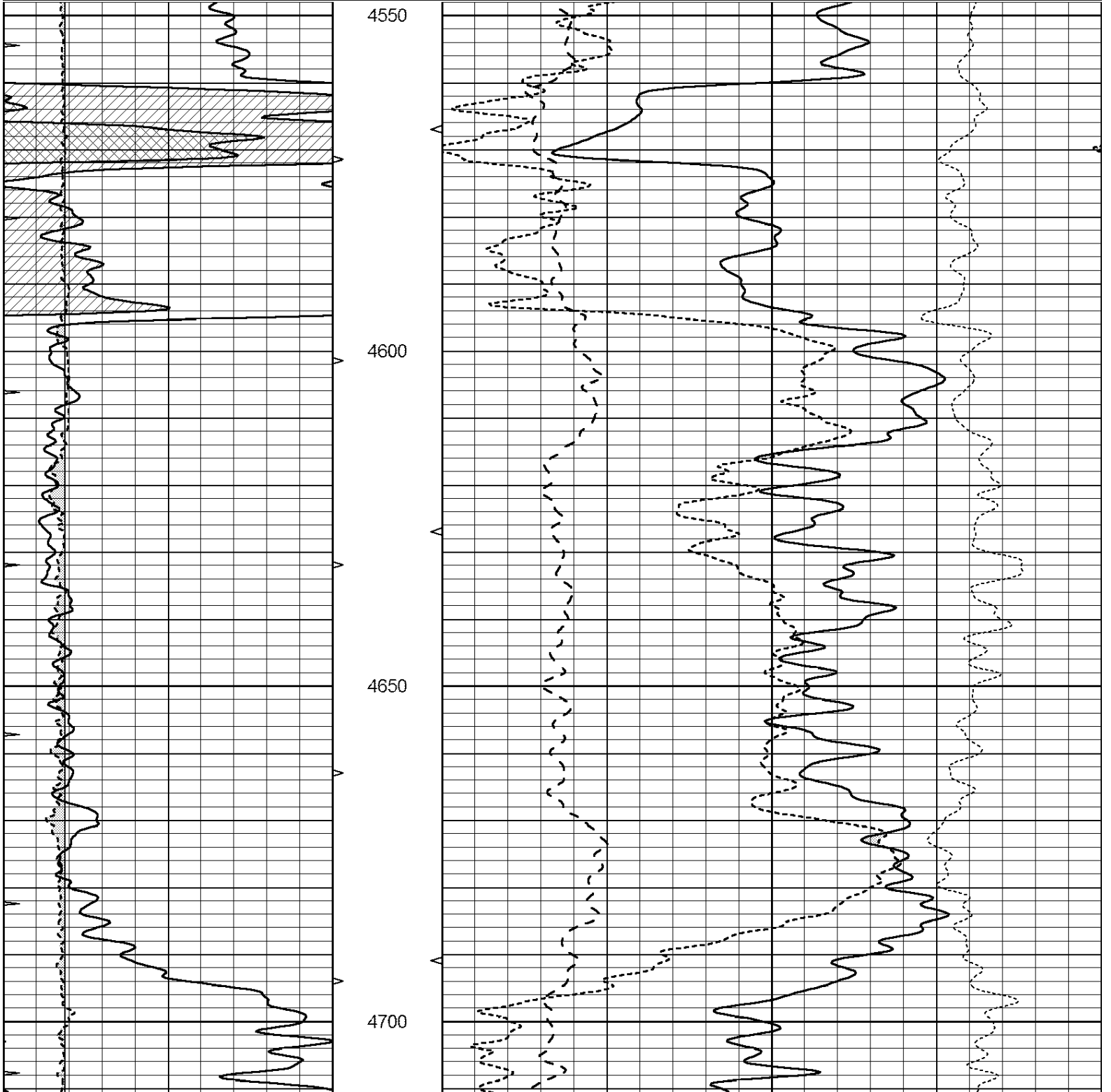


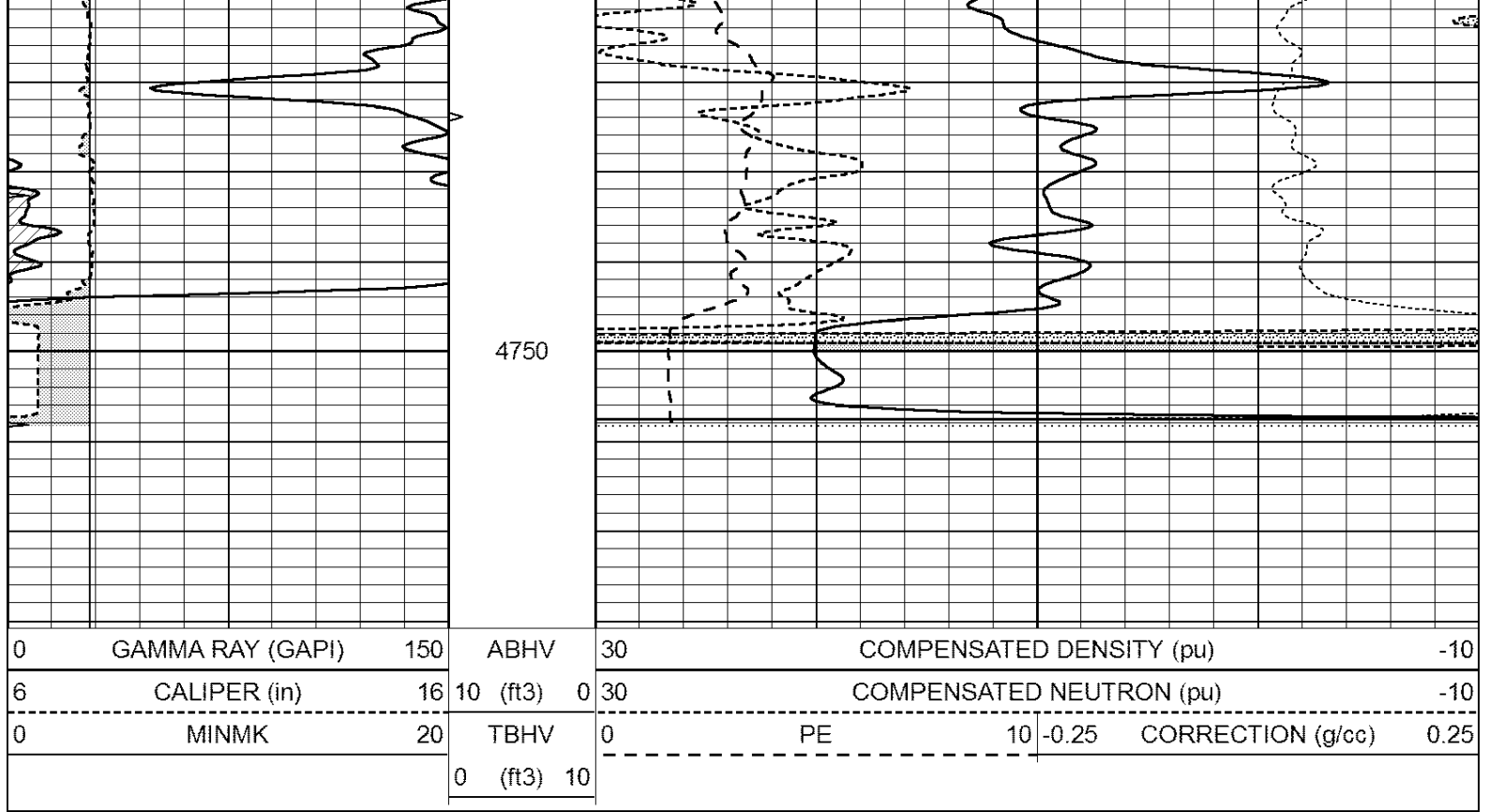


REPEAT SECTION

Database File: 26401pe.db
 Dataset Pathname: pass2.4
 Presentation Format: _ldt_neu
 Dataset Creation: Sun Nov 09 06:29:10 2014 by Calc Open-Cased 090629
 Charted by: Depth in Feet scaled 1:240

0	GAMMA RAY (GAPI)	150	ABHV	30	COMPENSATED DENSITY (pu)	-10
6	CALIPER (in)	16	10 (ft3)	0 30	COMPENSATED NEUTRON (pu)	-10
0	MINMK	20	TBHV	0	PE	10 -0.25 CORRECTION (g/cc) 0.25
			0 (ft3)	10		





Calibration Report

Database File: 26401pe.db
 Dataset Pathname: pass3.3
 Dataset Creation: Sun Nov 09 08:03:32 2014 by Calc Open-Cased 090629

Dual Induction Calibration Report

Serial-Model: PROBE8-DILG
 Surface Cal Performed: Sun Aug 17 08:09:53 2014
 Downhole Cal Performed: Mon Jul 28 11:08:27 2008
 After Survey Verification Performed: Mon Jul 28 11:08:27 2008

Surface Calibration

Loop:	Readings				References		Results	
	Air	Loop			Air	Loop	m	b
Deep	0.015	0.648	V	0.000	400.000	mmho/m	620.000	-2.000
Medium	0.029	0.796	V	0.000	464.000	mmho/m	590.000	-16.000
Internal:	Zero	Cal		Zero	Cal		m	b
Deep	0.017	0.657	V	0.000	400.000	mmho/m	625.153	-10.619
Medium	0.016	0.757	V	0.000	464.000	mmho/m	625.992	-9.739

Downhole Calibration

	Readings				References		Results	
	Zero	Cal			Zero	Cal	m'	b'
Deep	0.000	0.000	mmho/m	2.011	405.777	mmho/m	1.000	0.000
Medium	0.000	0.000	mmho/m	7.590	503.393	mmho/m	1.000	0.000
LL3		7.500	V		1500.000	Ohm-m		
		0.000	V		20.000	Ohm-m		
		-7.200	V		3800.000	mmho-m		

After Survey Verification

Readings	Targets	Results
----------	---------	---------

	Zero	Cal		Zero	Cal		m'	b'
Deep	0.000	0.000	mmho/m	0.000	0.000	mmho/m	0.000	0.000
Medium	0.000	0.000	mmho/m	0.000	0.000	mmho/m	0.000	0.000
LL3		1.000	Ohm-m		1.000	Ohm-m		
		0.000	Ohm-m		0.000	Ohm-m		
		1.000	mmho-m		1.000	mmho-m		

Litho Density Calibration Report
Serial: 006 Model: PRB

Master Calibration

Performed Wed Mar 12 14:26:38 2014

	Background	Magnesium	Aluminum	Sandstone	
Window 1	1296.6	7199.0	2625.4	7833.2	cps
Window 2	1218.8	5956.6	2257.8	6372.0	cps
Window 3	926.7	2990.0	1318.7	3107.7	cps
Window 4	314.3	319.6	320.3	326.2	cps
Long Space	0.0	4737.9	1039.0	5153.3	cps
Short Space	1.3	1655.6	1074.2	1728.4	cps
Rho		1.7100	2.5960	1.3800	g/cc
Pe		0.0000	2.5700	1.5500	
Rib Angle	: 44.1	Rib Slope	: 0.969	Density/Spine Ratio	: 0.562
Spine Angle	: 74.1	Spine Slope	: 3.507	Spine Intercept	: -17.5

Before Survey Verification

Performed Wed Dec 31 18:00:00 1969

Window 1	0.0	0.0	0.0	0.0	cps
Window 2	0.0	0.0	0.0	0.0	cps
Window 3	0.0	0.0	0.0	0.0	cps
Window 4	0.0	0.0	0.0	0.0	cps
Long Space	0.0	0.0	0.0	0.0	cps
Short Space	0.0	0.0	0.0	0.0	cps
Measured Rho		0.0000	0.0000	0.0000	g/cc
Measured Correction		0.0000	0.0000	0.0000	g/cc
Measured Pe			0.0000	0.0000	

After Survey Verification

Performed Wed Dec 31 18:00:00 1969

Window 1	0.0	0.0	0.0	0.0	cps
Window 2	0.0	0.0	0.0	0.0	cps
Window 3	0.0	0.0	0.0	0.0	cps
Window 4	0.0	0.0	0.0	0.0	cps
Long Space	0.0	0.0	0.0	0.0	cps
Short Space	0.0	0.0	0.0	0.0	cps
Measured Rho		0.0000	0.0000	0.0000	g/cc
Measured Correction		0.0000	0.0000	0.0000	g/cc
Measured Pe			0.0000	0.0000	

Compensated Neutron Calibration Report

Serial Number: 6I
Tool Model: G

CALIBRATION

Detector	Readings	Target	Normalization
Short Space	1.00 cps	1.00 cps	1.0000
Long Space	1.00 cps	1.00 cps	1.0000

Long Space 1.00 cps 1.00 cps 1.0000

PRE-SURVEY VERIFICATION

	Detector	Readings	Measured	Target
1)	Short Space Long Space	cps cps	pu	pu
2)	Short Space Long Space	cps cps	pu	
3)	Short Space Long Space	cps cps	pu	

POST-SURVEY VERIFICATION

	Detector	Readings	Measured	Target
1)	Short Space Long Space	cps cps	pu	pu
2)	Short Space Long Space	cps cps	pu	pu
3)	Short Space Long Space	cps cps	pu	pu

Gamma Ray Calibration Report

Serial Number:	GR6	
Tool Model:	OPEN	
Performed:	Sun Aug 17 15:23:09 2014	
Calibrator Value:	150.0	GAPI
Background Reading:	0.0	cps
Calibrator Reading:	276.0	cps
Sensitivity:	0.7000	GAPI/cps