



Pioneer Energy Services

Dual Induction Log

API No.	15-007-24,215-00-00	
Company	R & B Oil & Gas, Inc.	
Well	Chain Ranch No. 2	
Field	Amber Creek East	
County	Barber	State
Location	660' FSL & 660' FWL	
Other Services	CNL/CDL	
Sec: 31	Twp: 30s	Rge: 11w
Permanent Datum	Ground Level	Elevation 1748
Log Measured From	Kelly Bushing	10 Ft. Above Perm. Datum
Drilling Measured From	Kelly Bushing	
Date	9/22/2014	

Run Number	One
Depth Driller	4773
Depth Logger	4775
Bottom Logged Interval	4774
Top Log Interval	250
Casing Driller	8.625 @ 252
Casing Logger	250
Bit Size	7.875
Type Fluid in Hole	Chemical
Salinity, ppm CL	4000
Density / Viscosity	9.4 46
pH / Fluid Loss	10.0 9.6
Source of Sample	Flowline
Rm @ Meas. Temp	.70 @ 76
Rmf @ Meas. Temp	.53 @ 76
Rmc @ Meas. Temp	.95 @ 76
Source of Rmf / Rmc	Charts
Rm @ BHT	.43 @ 124
Operating Rig Time	2.5 Hours
Max Rec. Temp. F	124
Equipment Number	108
Location	Hays
Recorded By	D. Fischer
Witnessed By	Tim Pierce

<<< Fold Here >>>

All interpretations are opinions based on inferences from electrical or other measurements and we cannot and do not guarantee the accuracy or correctness of any interpretation, and we shall not, except in the case of gross or willful negligence on our part, be liable or responsible for any loss, costs, damages, or expenses incurred or sustained by anyone resulting from any interpretation made by any of our officers, agents or employees. These interpretations are also subject to our general terms and conditions set out in our current Price Schedule.

Comments

Thank you for using Log-Tech, Inc.
(785) 625-3858

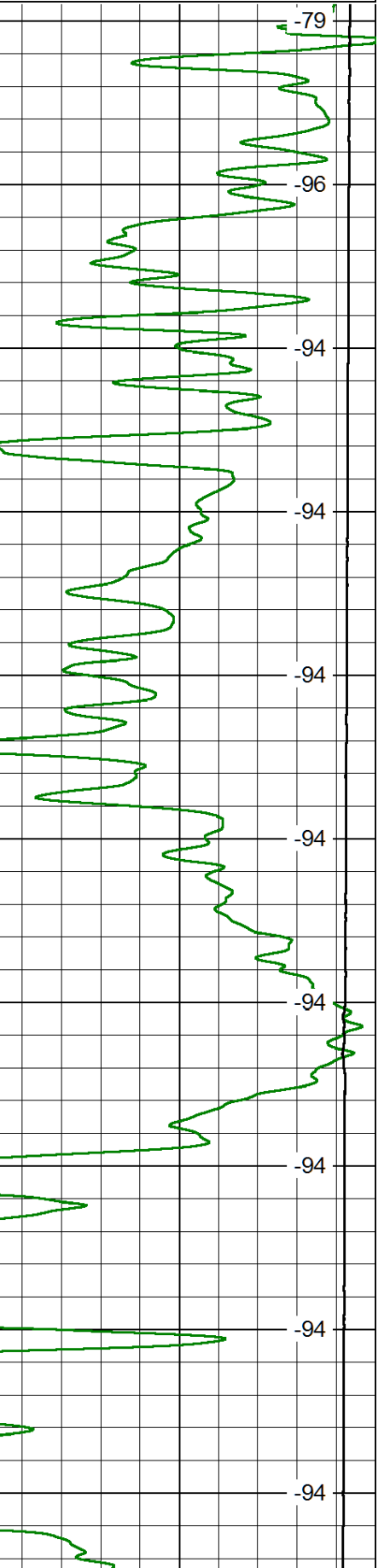
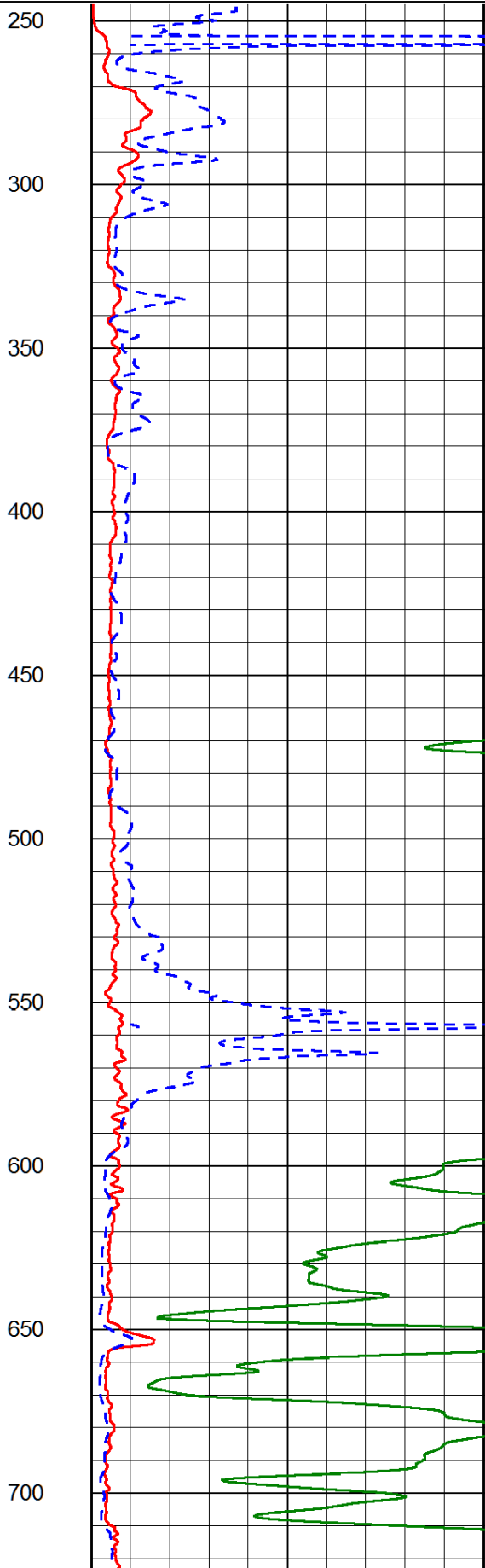
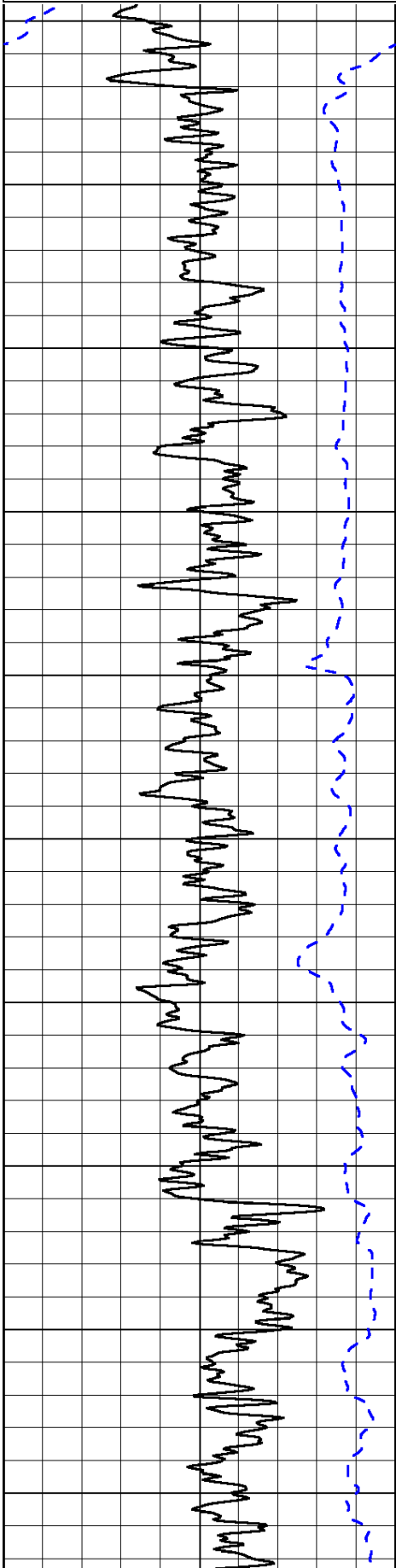
Pratt Ks., South to 99 Springs Rd., North to Gaillardia Rd. 1 1/2 East, South Into

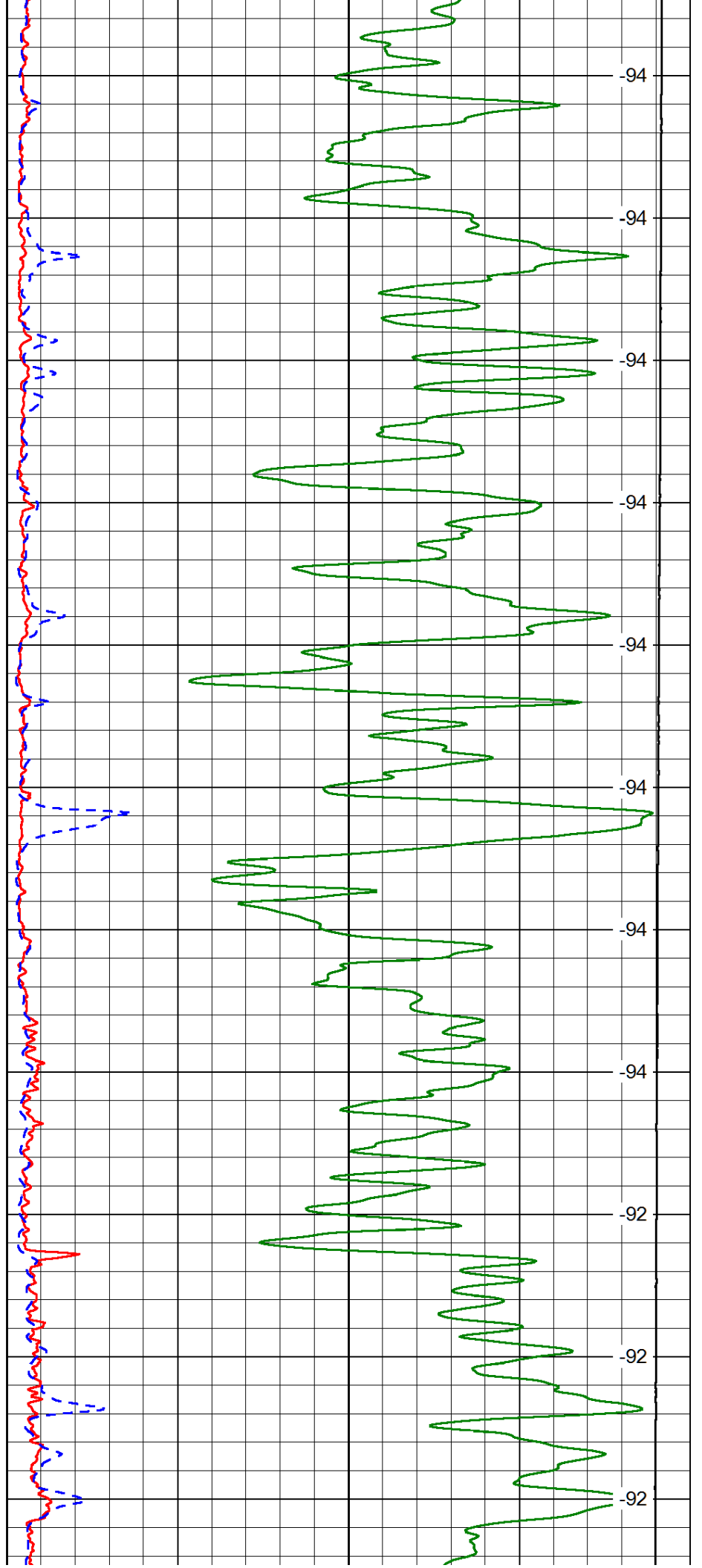
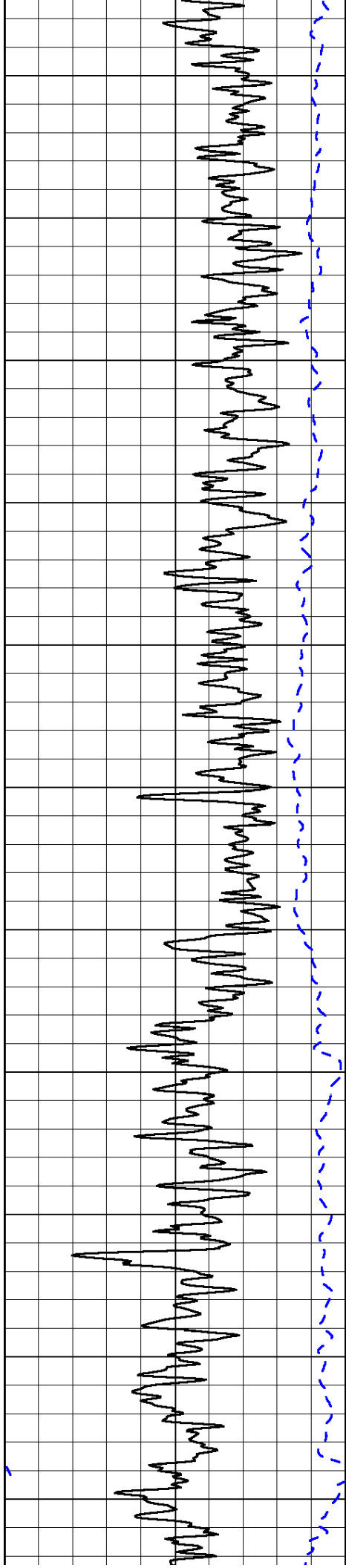
Database File: r&boil_chain_ranch_2hd.db
 Dataset Pathname: DIL/rbstck
 Presentation Format: dil2in
 Dataset Creation: Mon Sep 22 15:09:22 2014
 Charted by: Depth in Feet scaled 1:600

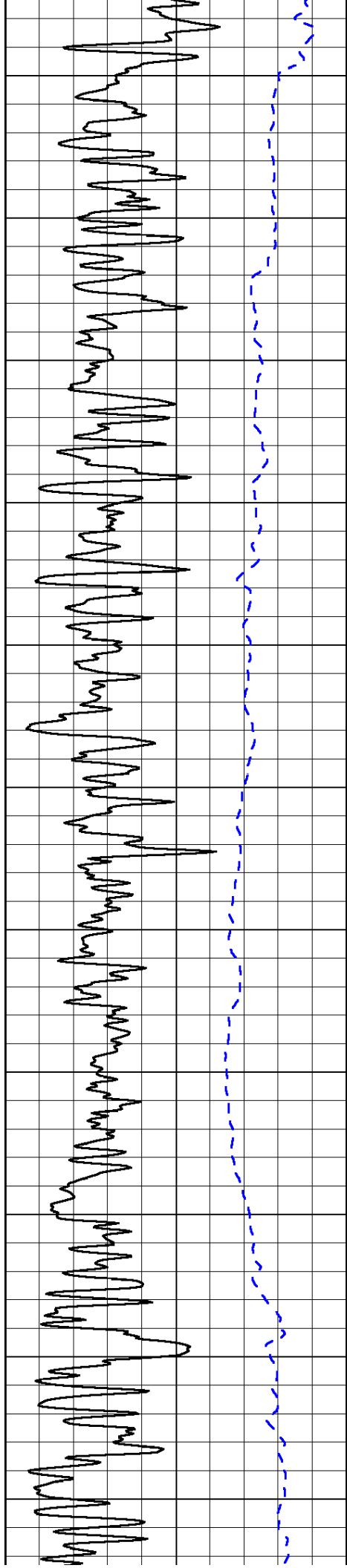
0	Gamma Ray	150
-200	SP (mV)	0

0	Shallow Resistivity	50
0	Deep Resistivity	50
1000	Conductivity	0
15000	Line Tension	0
50	Shallow Resistivity	500
50	Deep Resistivity	500

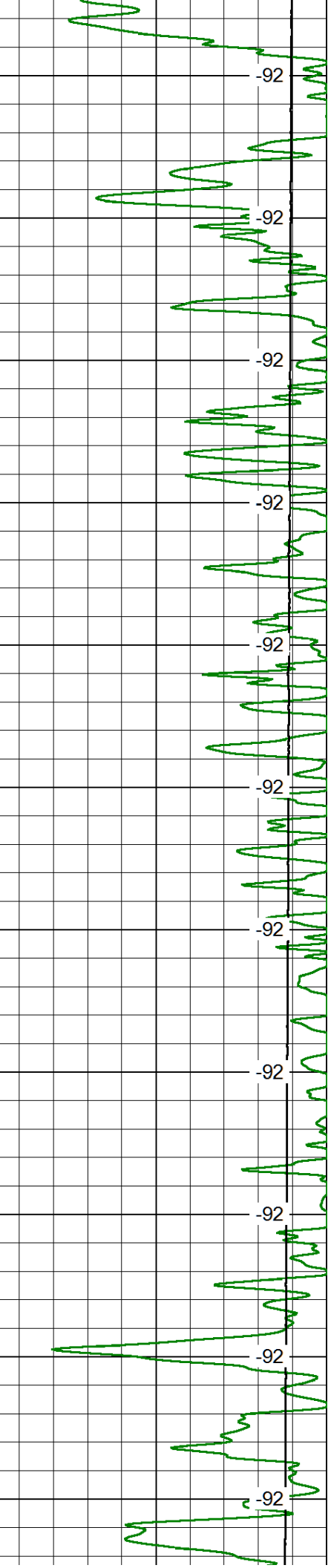
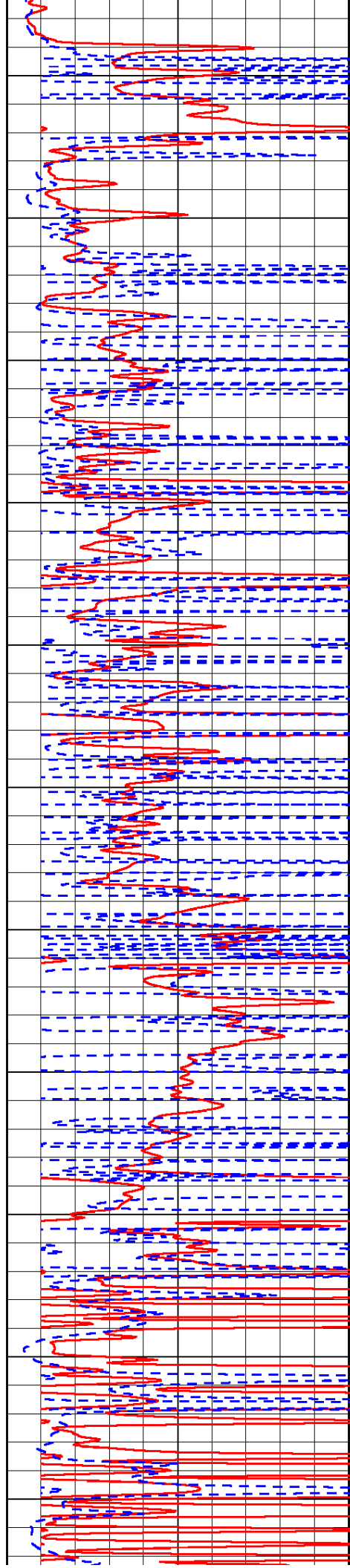
LSPD

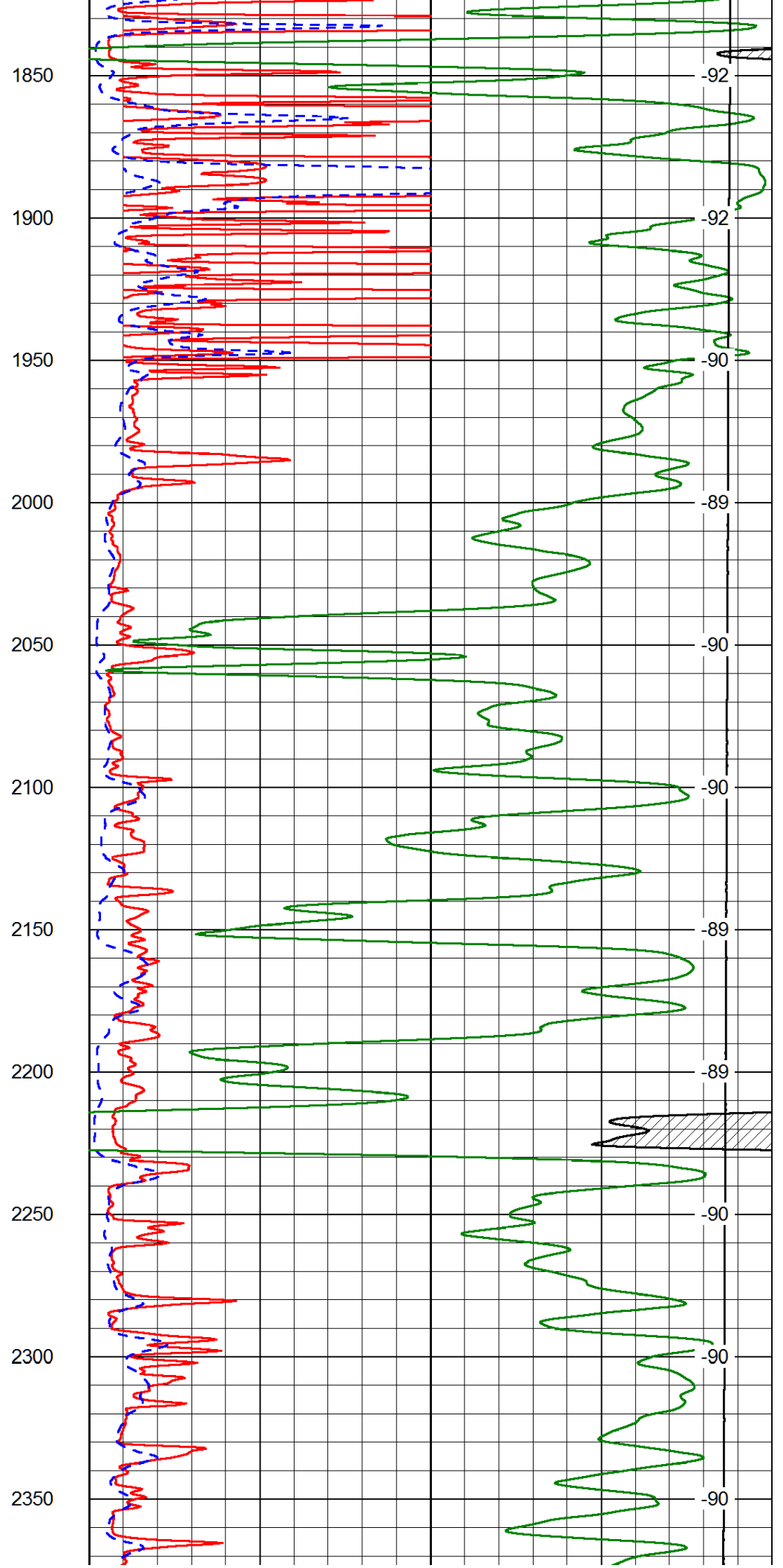
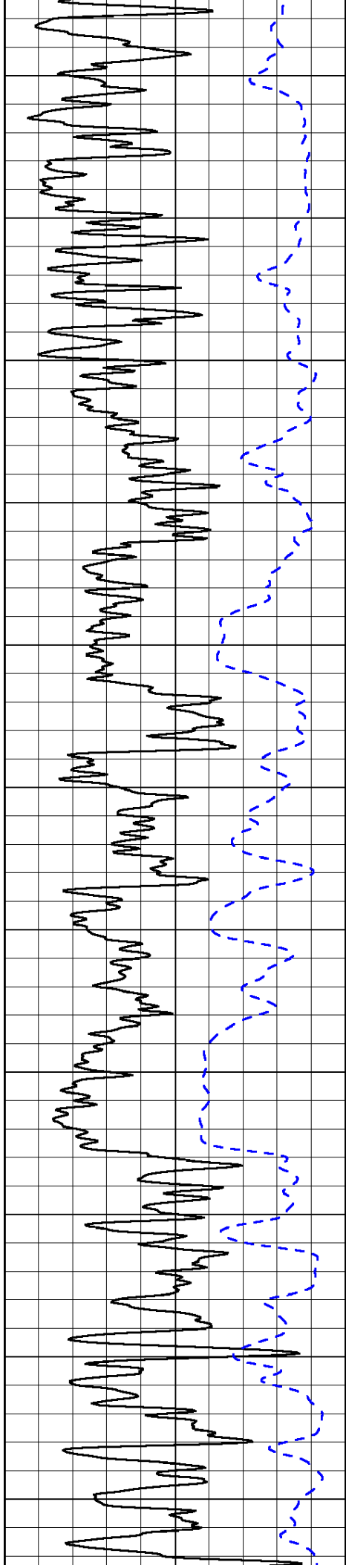


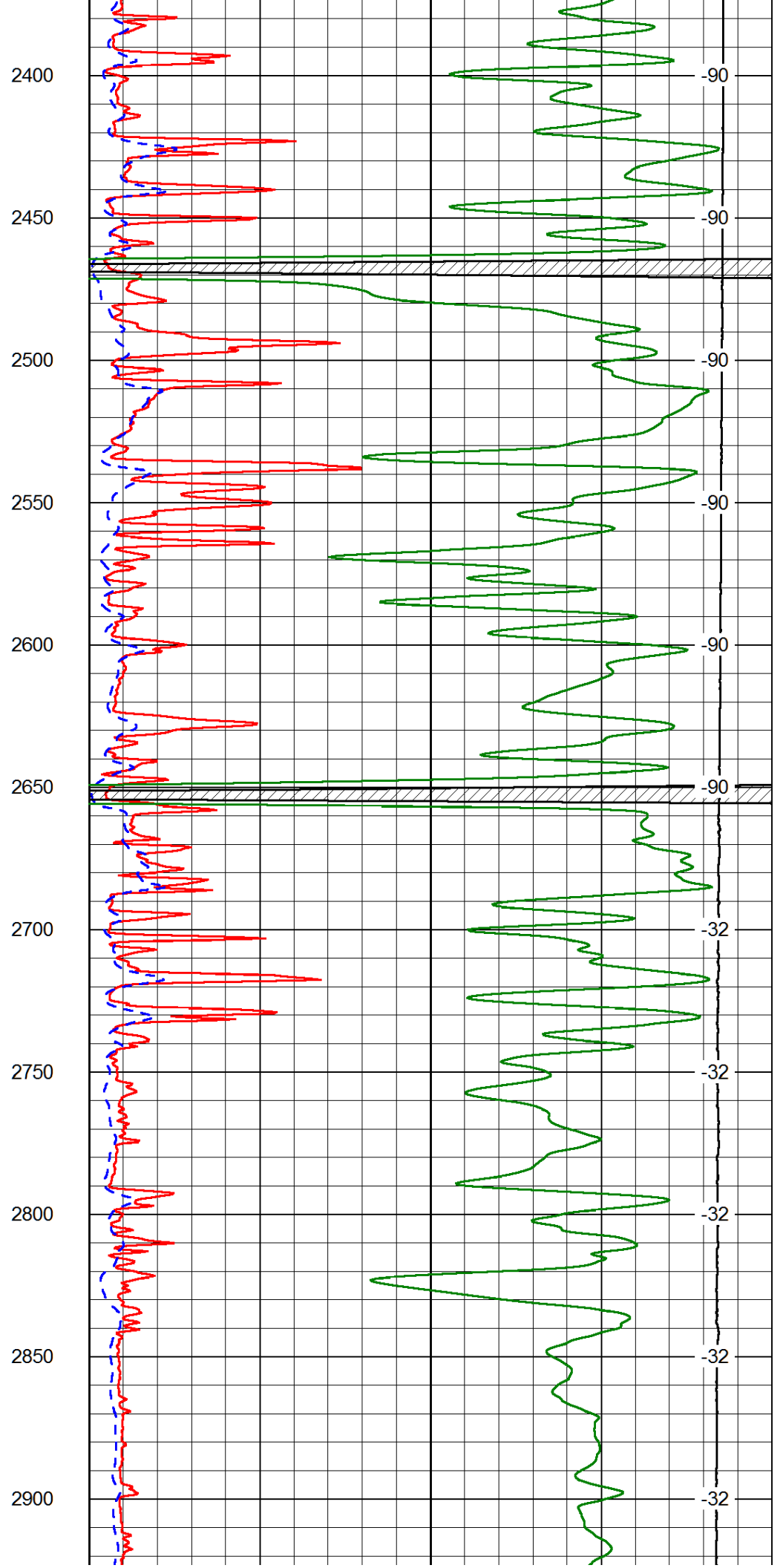
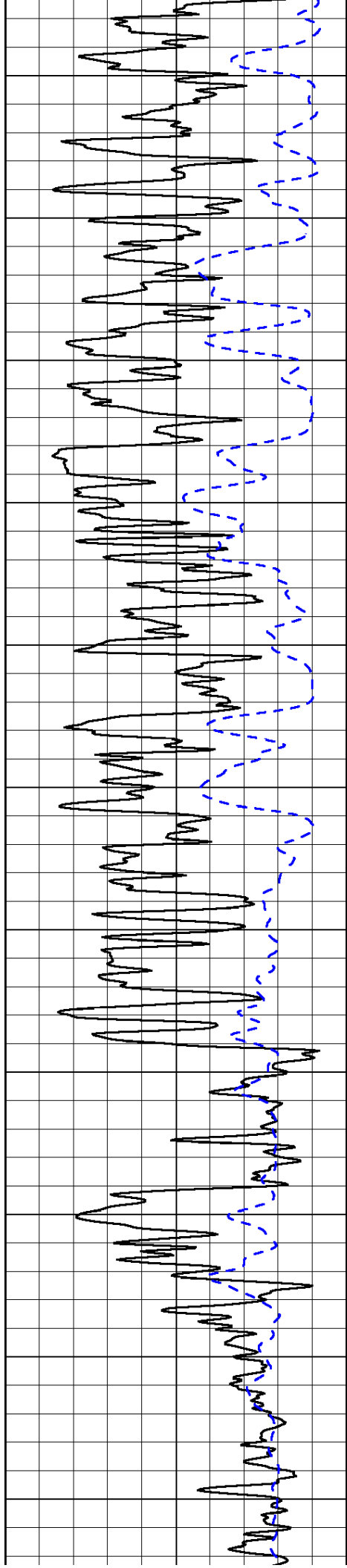


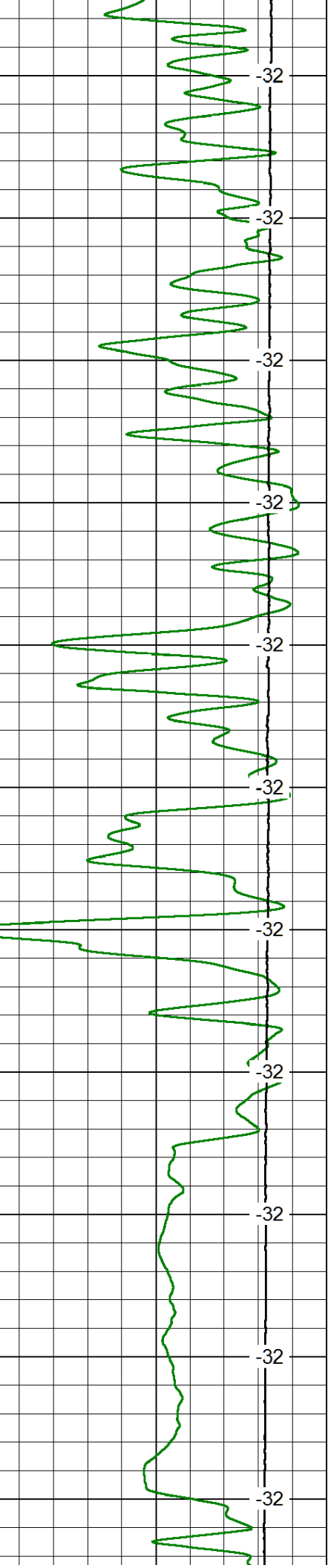
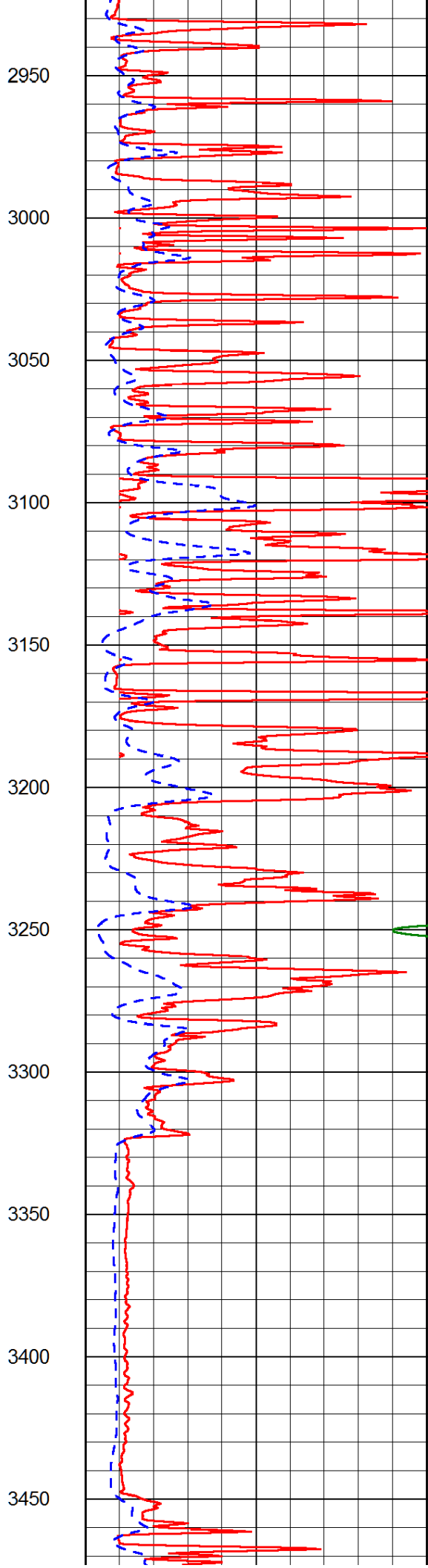
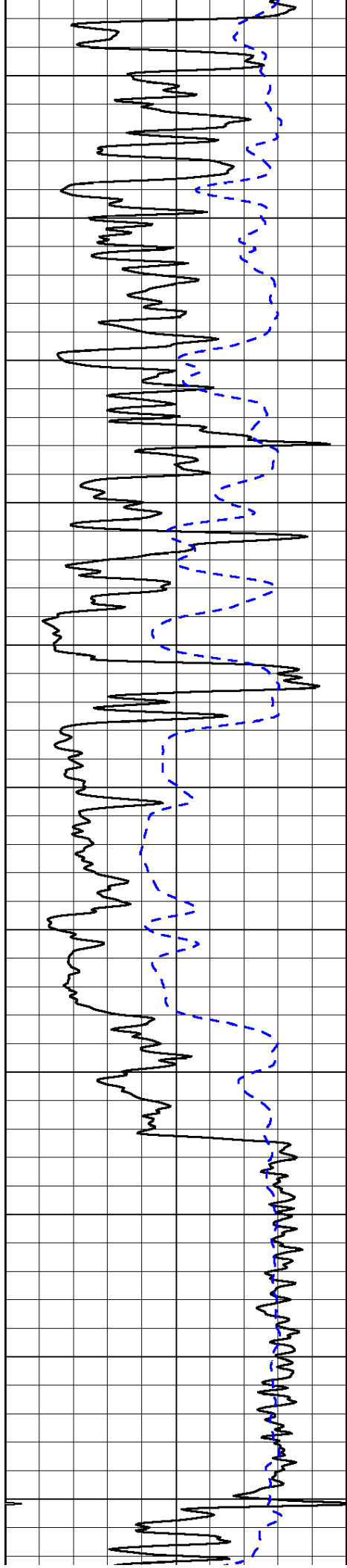


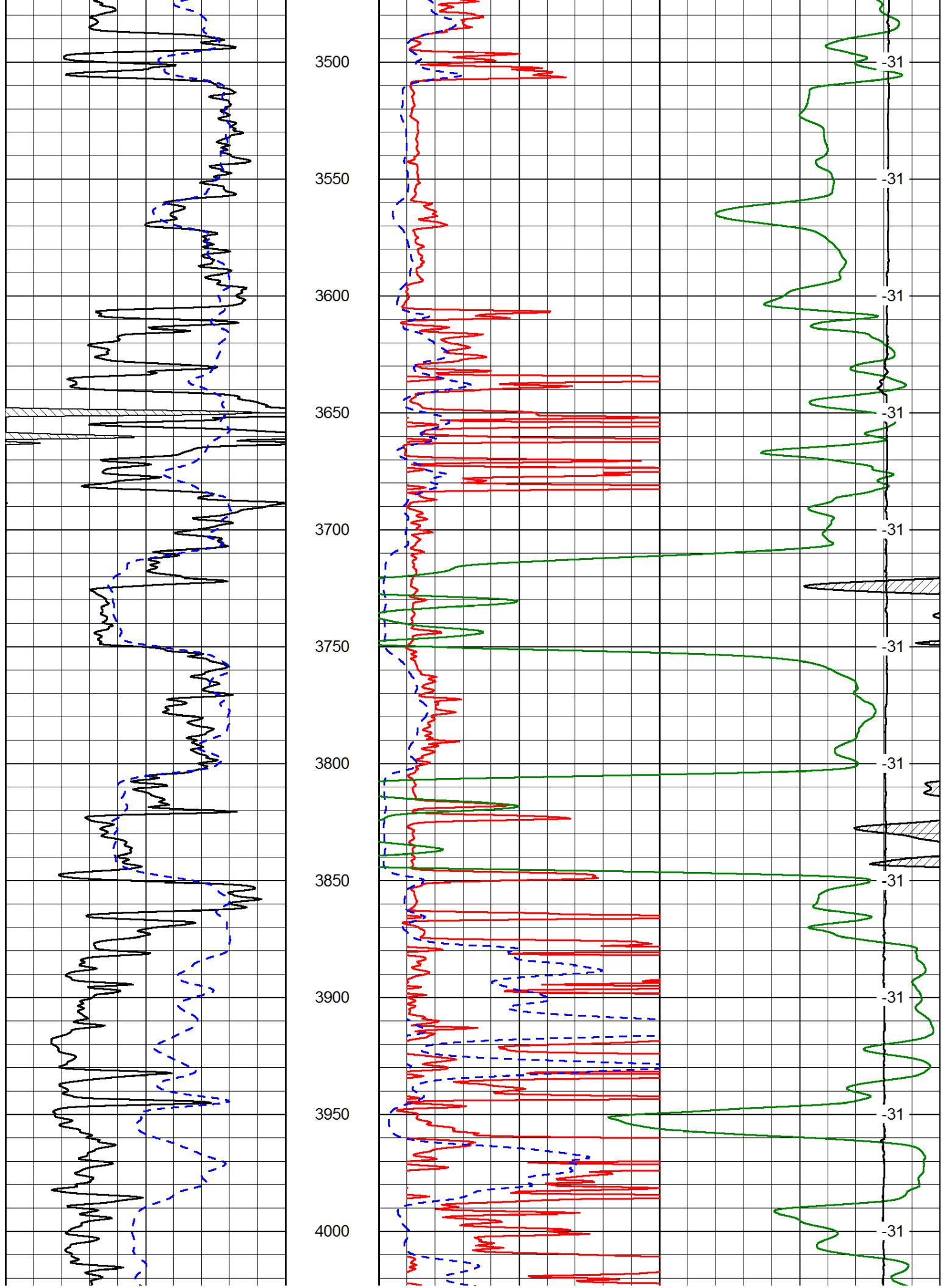
1300
1350
1400
1450
1500
1550
1600
1650
1700
1750
1800

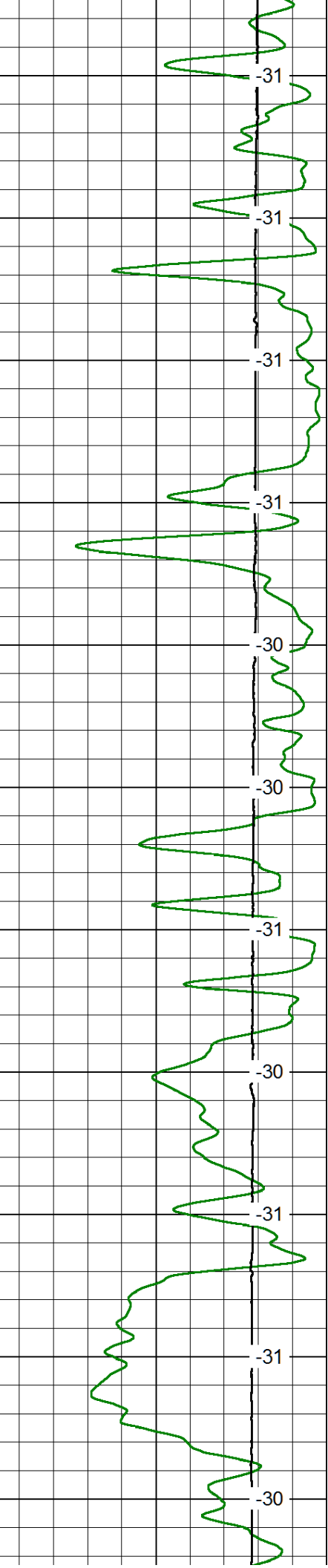
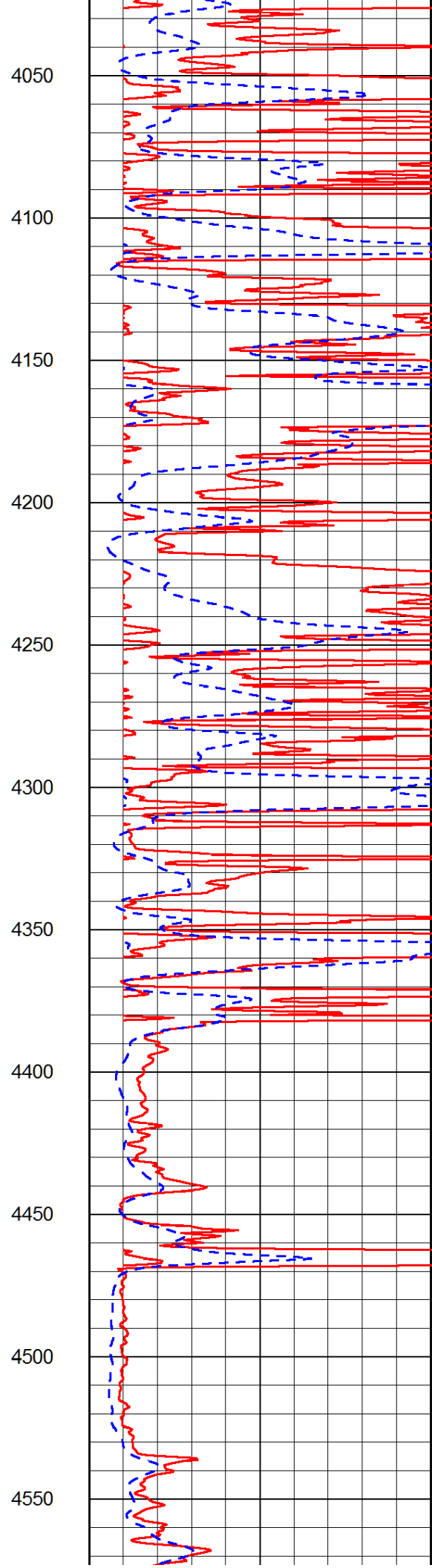
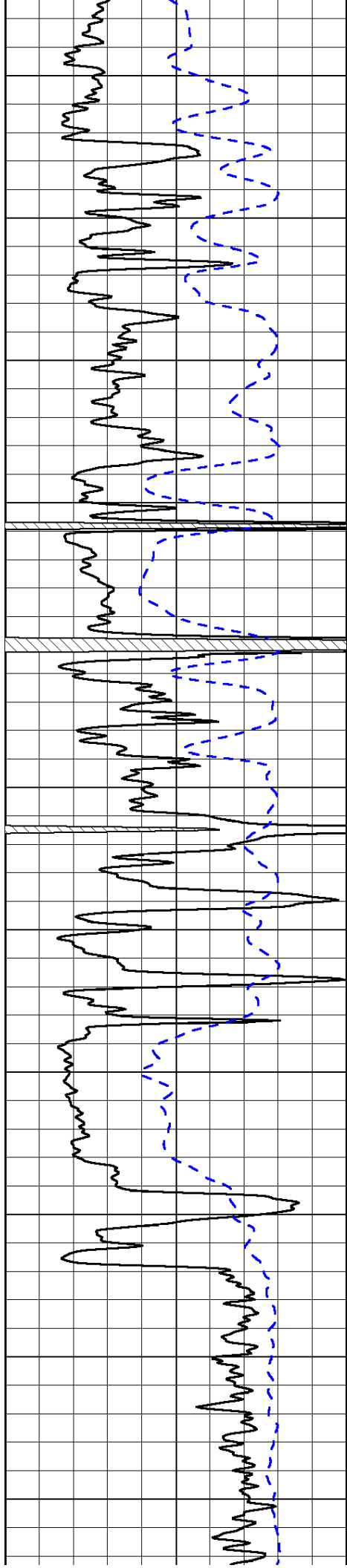


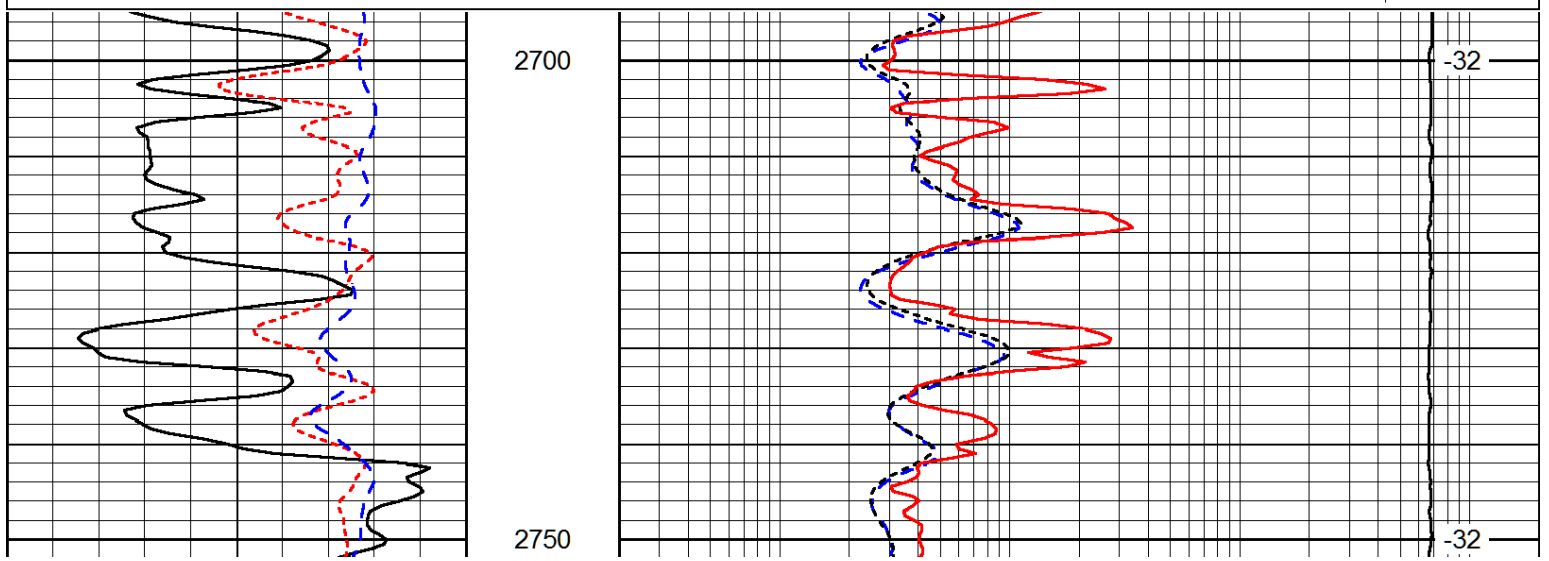
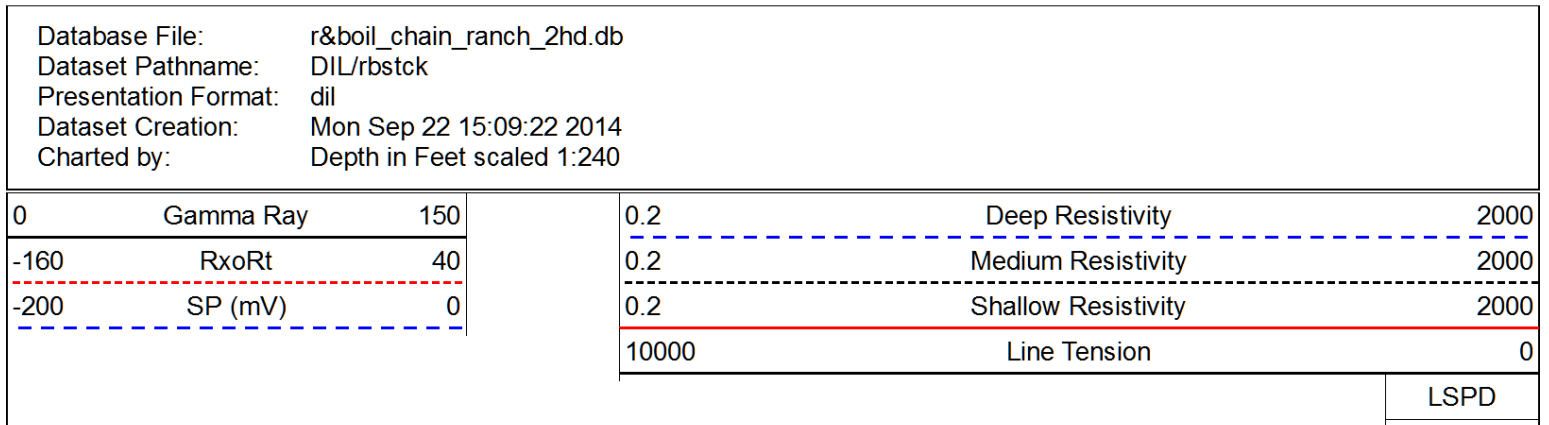
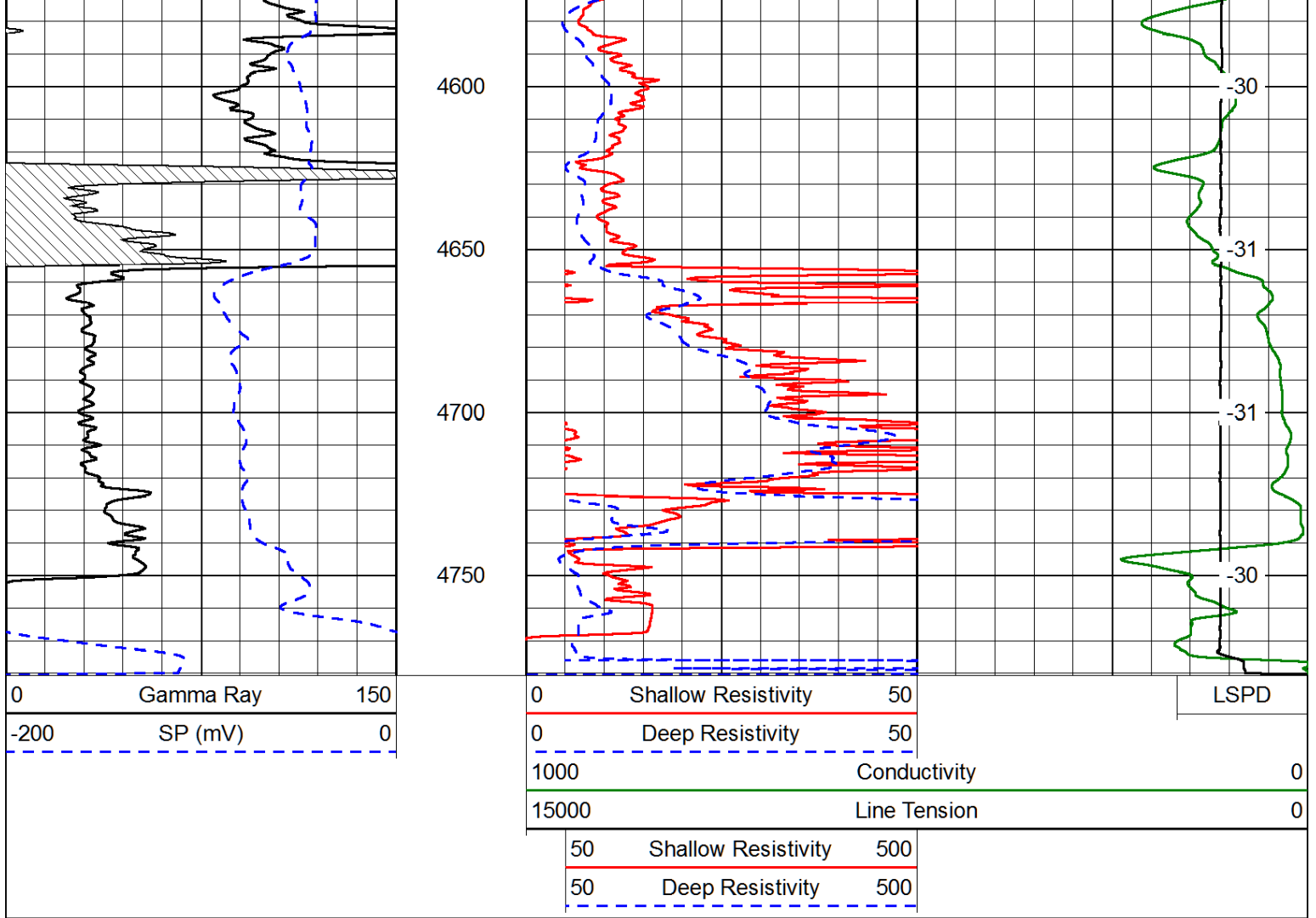


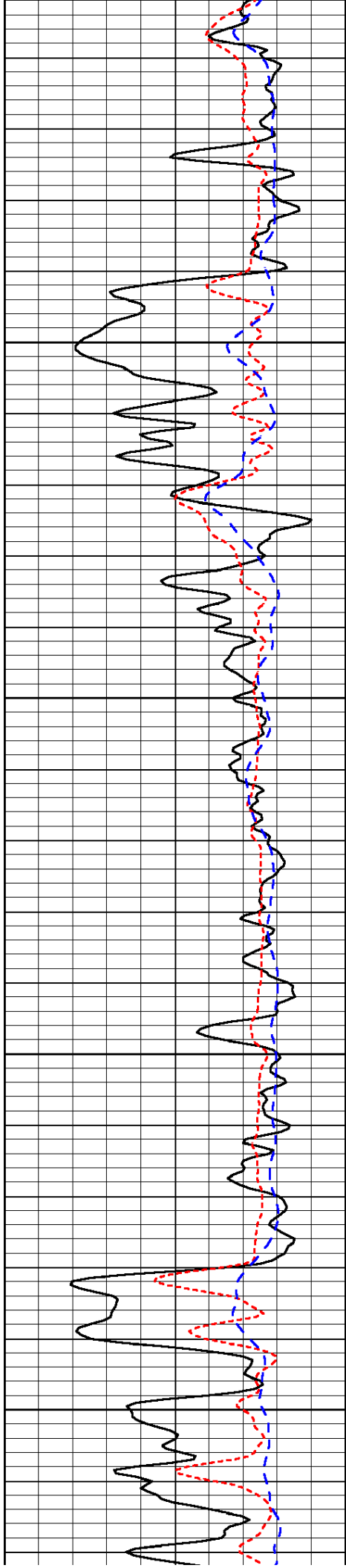










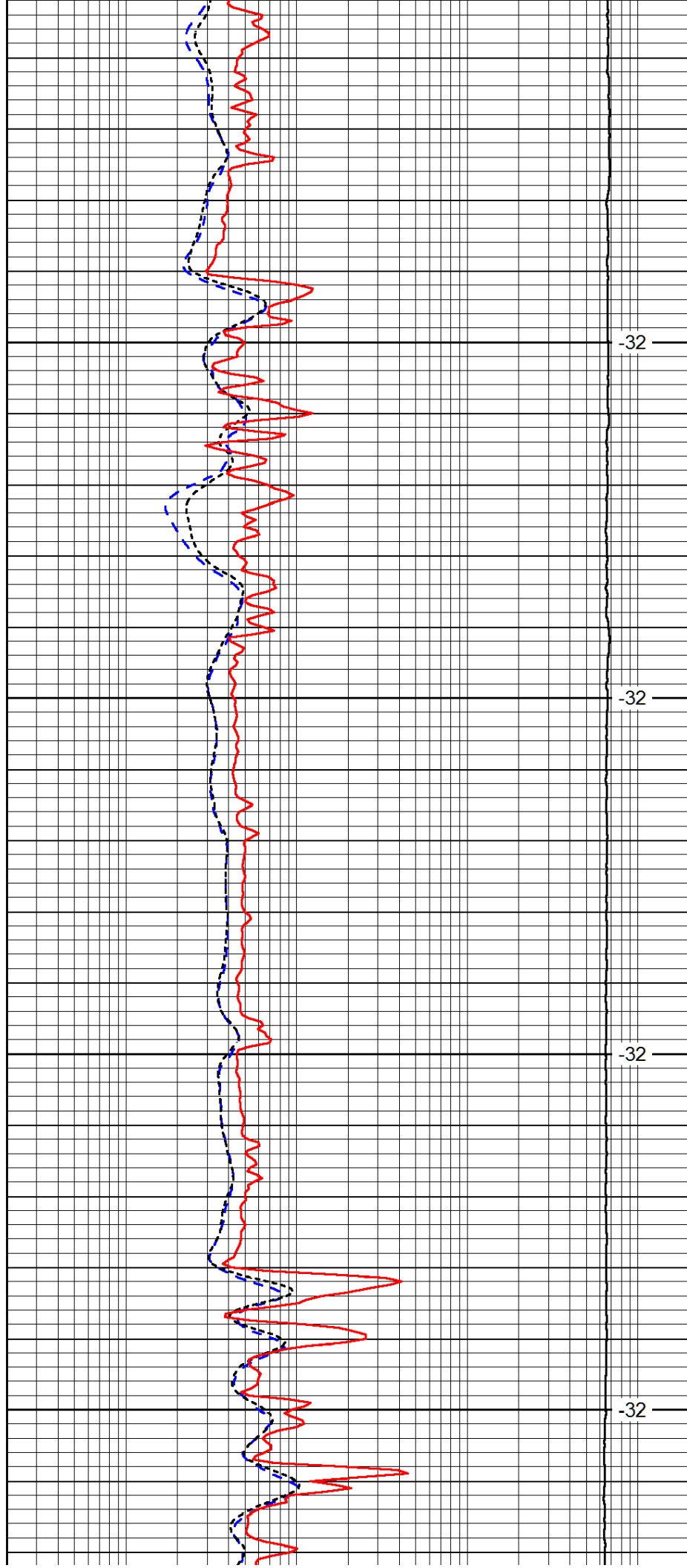


2800

2850

2900

2950

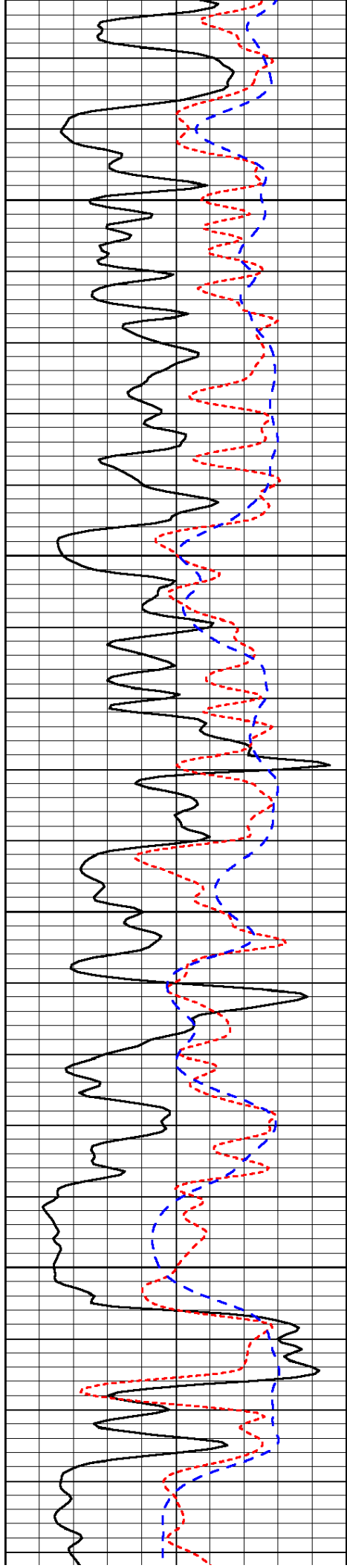


-32

-32

-32

-32

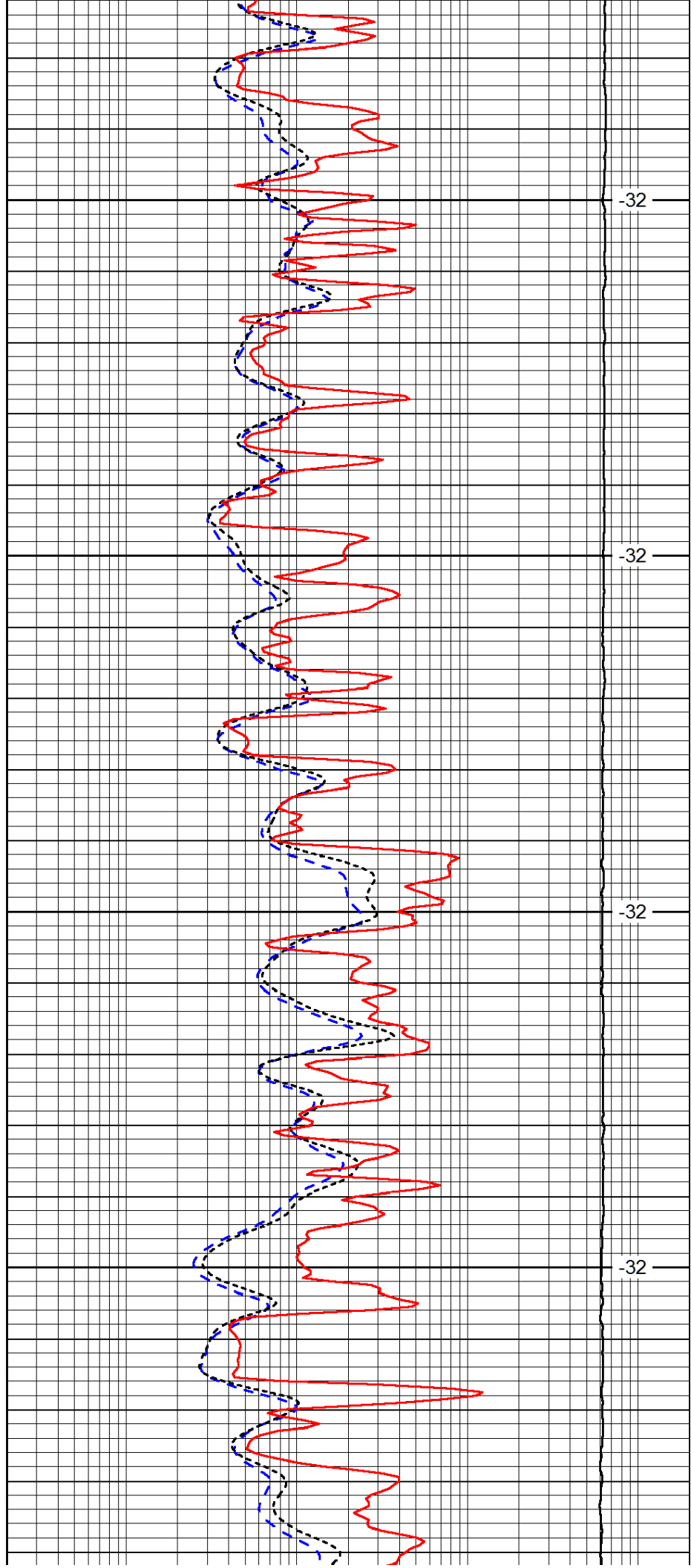


3000

3050

3100

3150

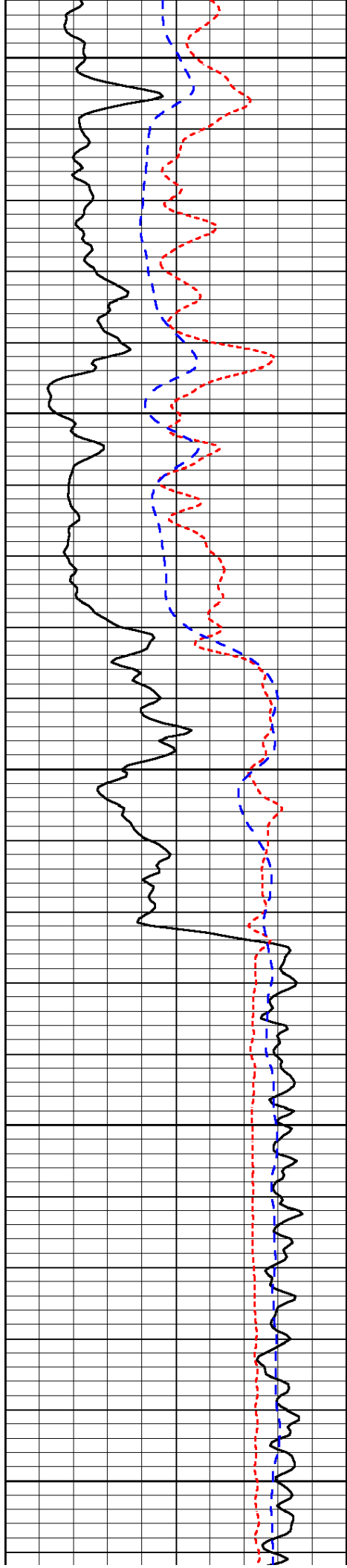


-32

-32

-32

-32



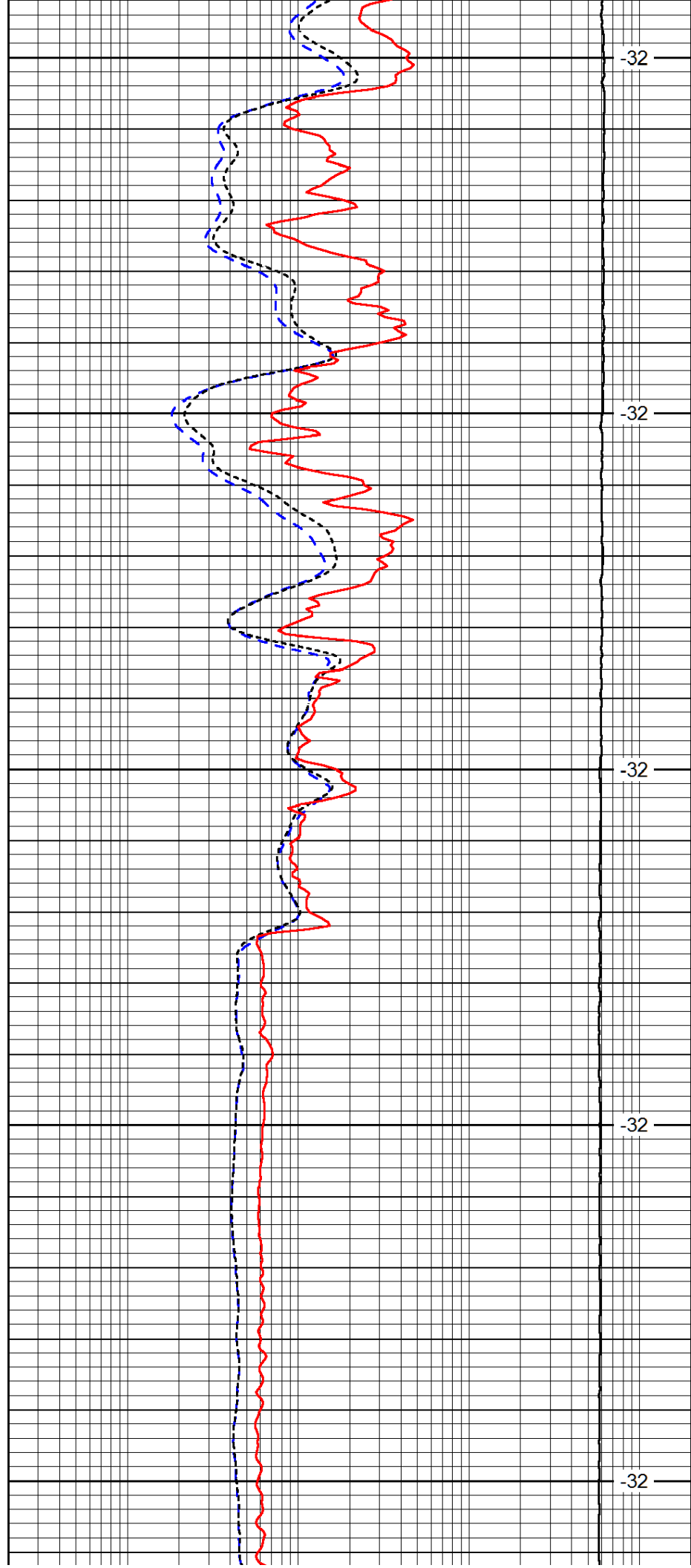
3200

3250

3300

3350

3400



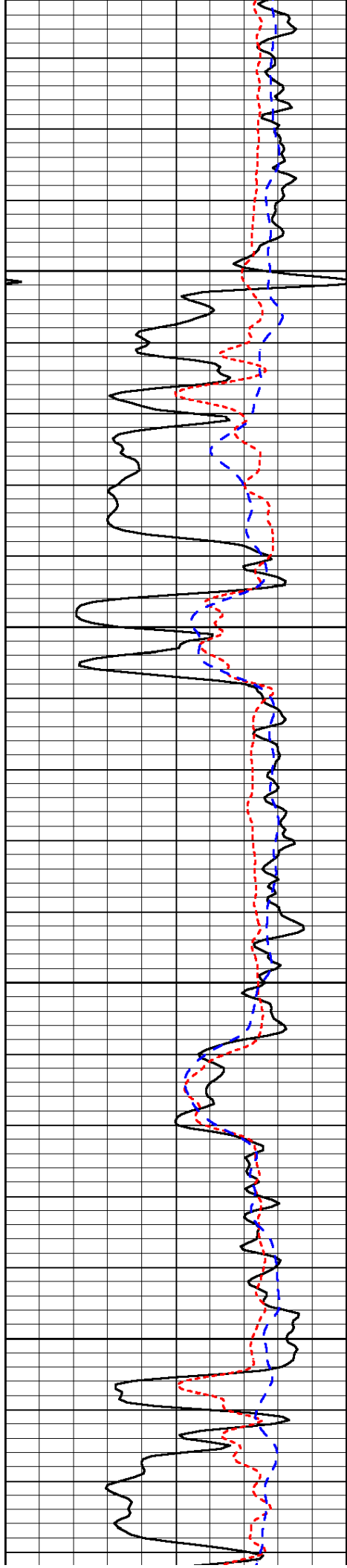
-32

-32

-32

-32

-32

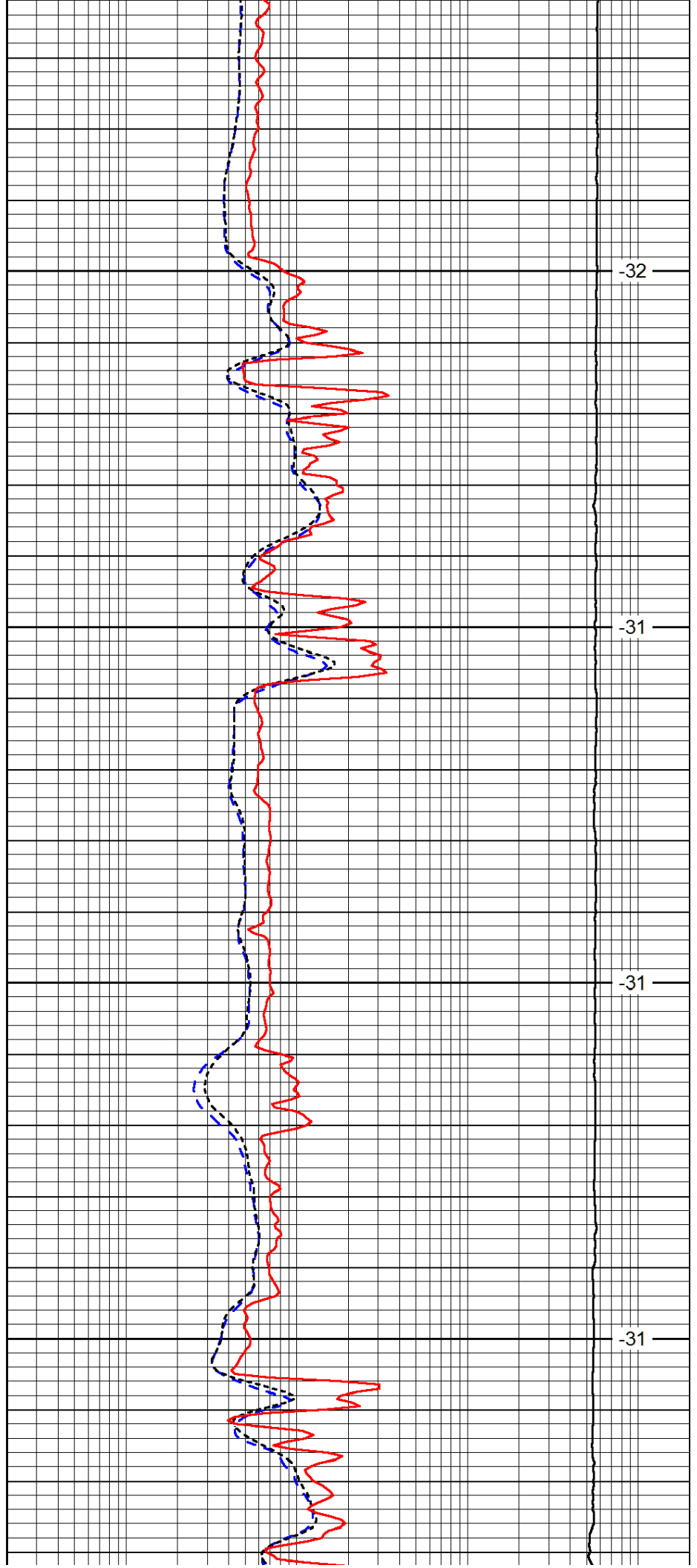


3450

3500

3550

3600

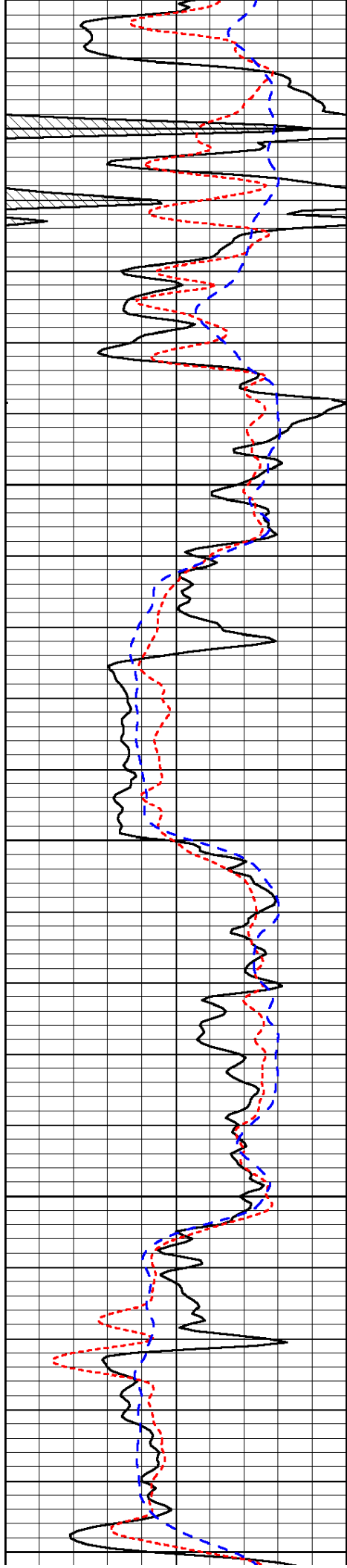


-32

-31

-31

-31



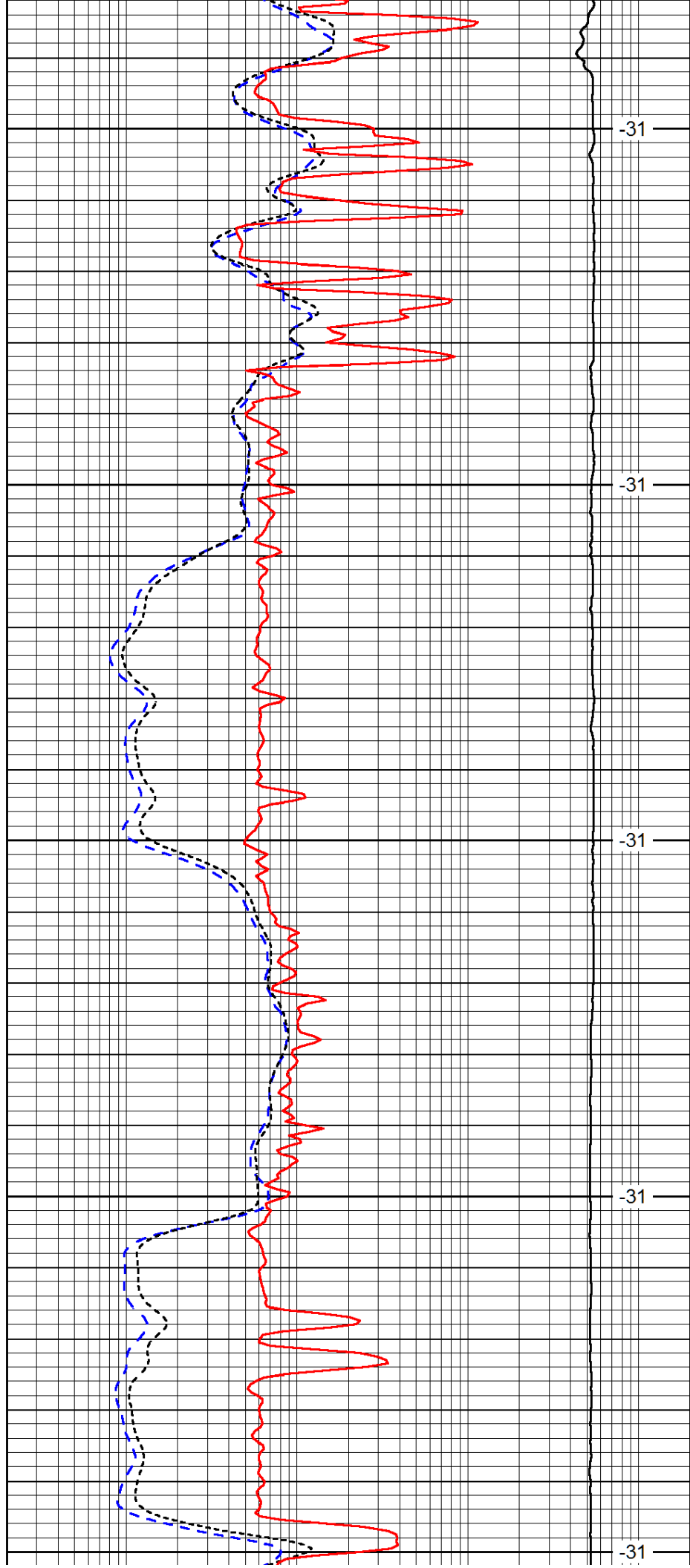
3650

3700

3750

3800

3850



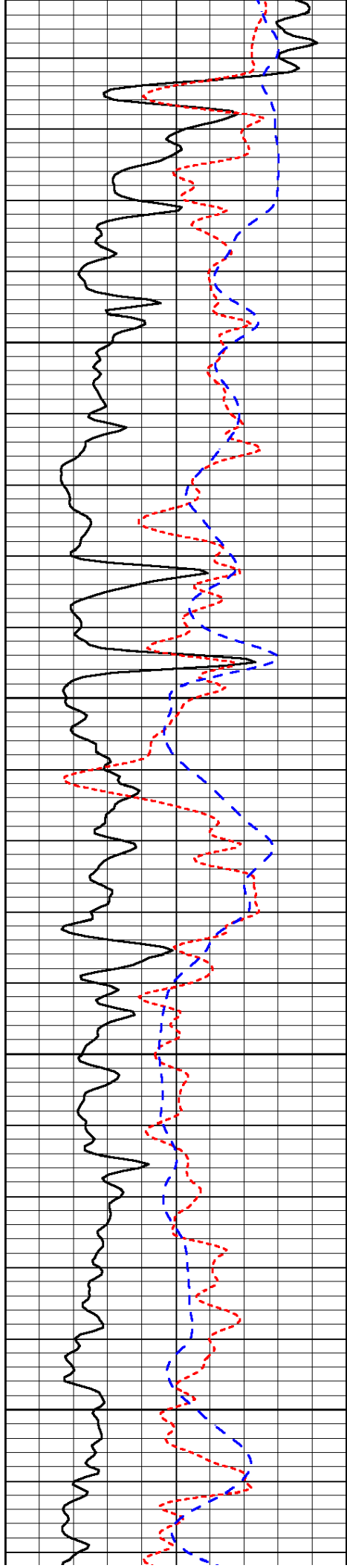
-31

-31

-31

-31

-31

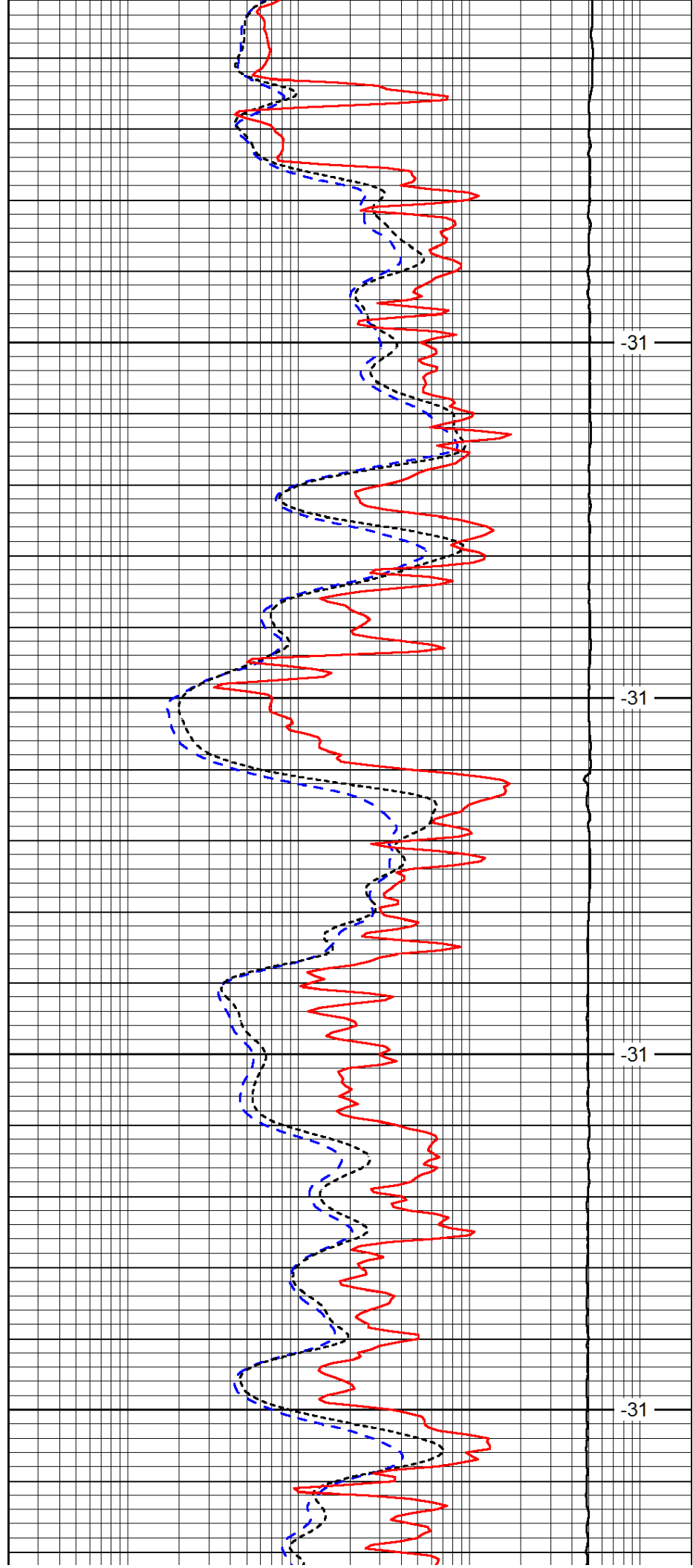


3900

3950

4000

4050

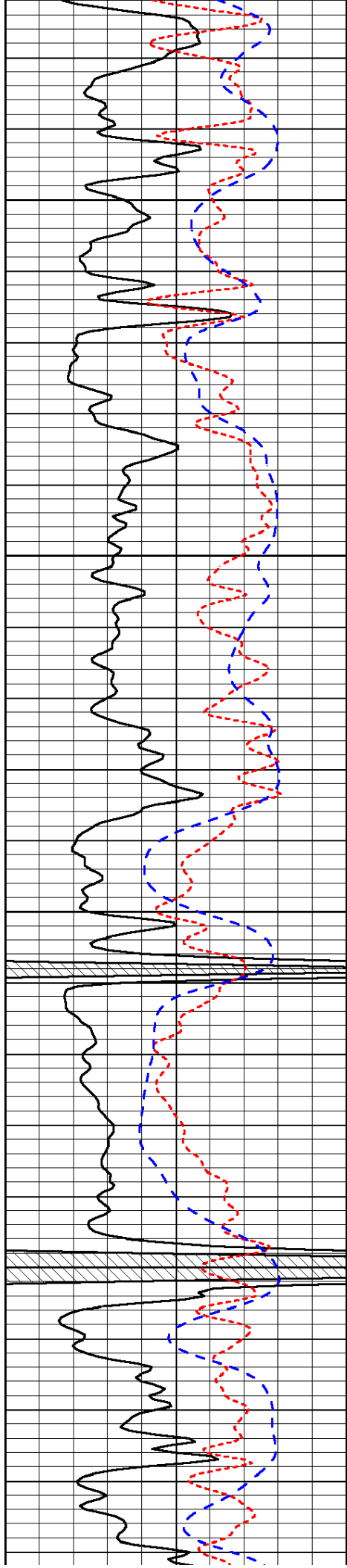


-31

-31

-31

-31

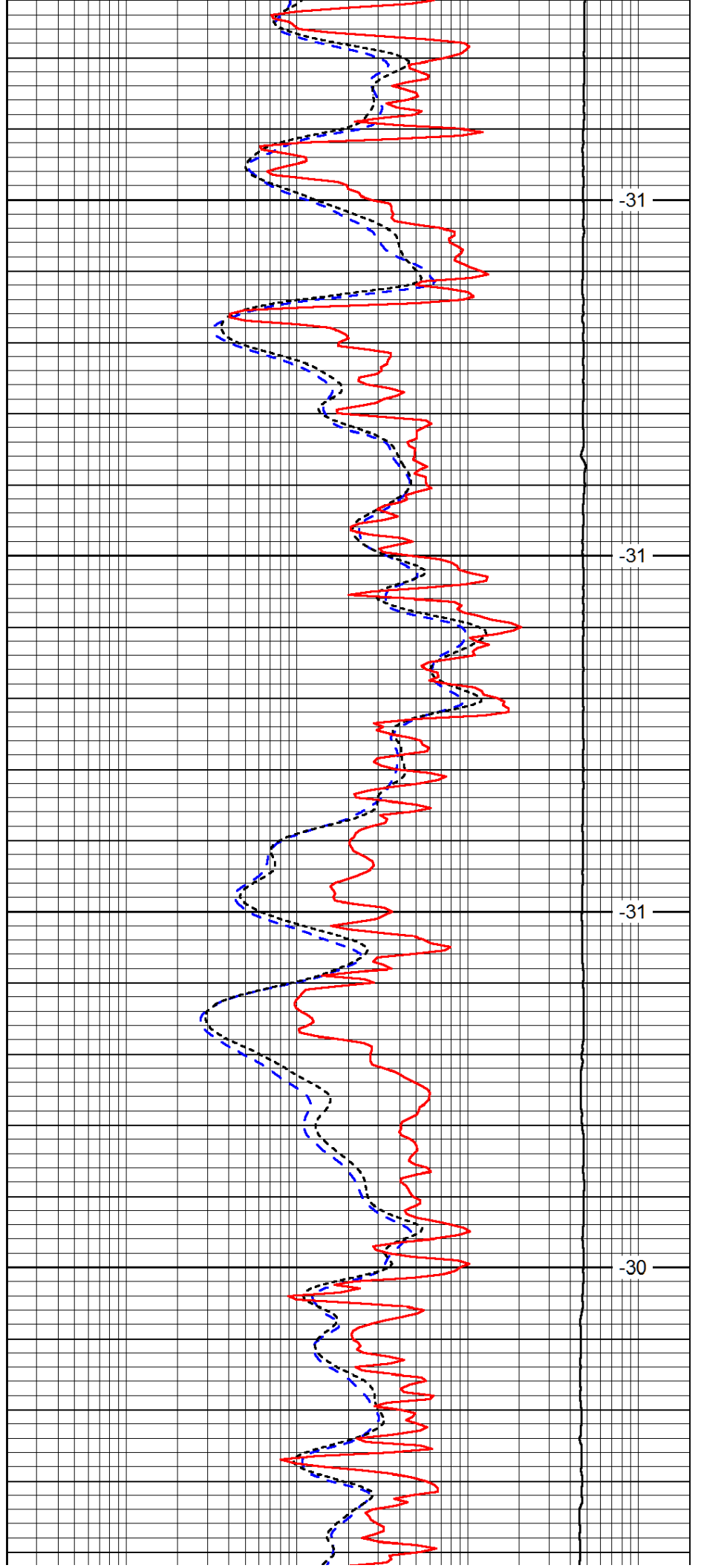


4100

4150

4200

4250

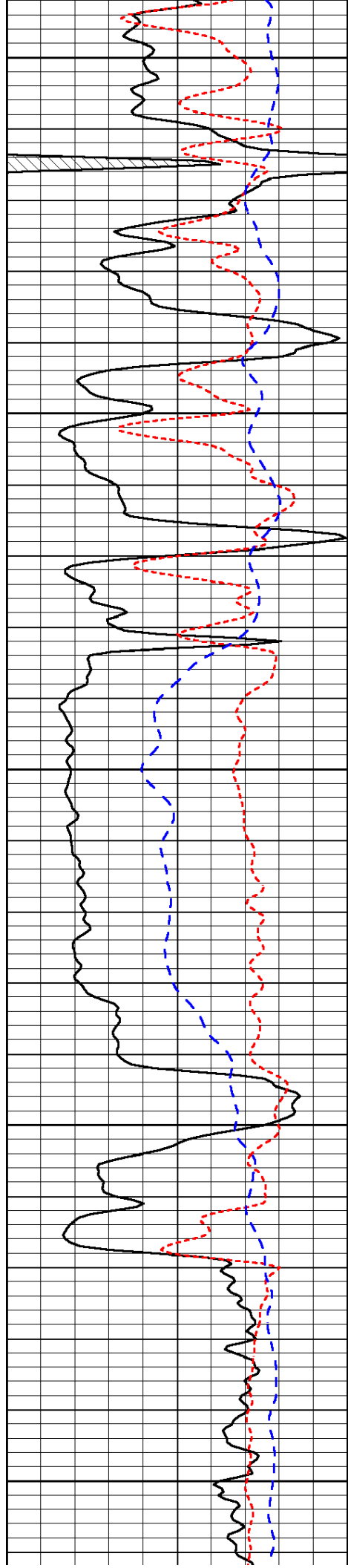


-31

-31

-31

-30



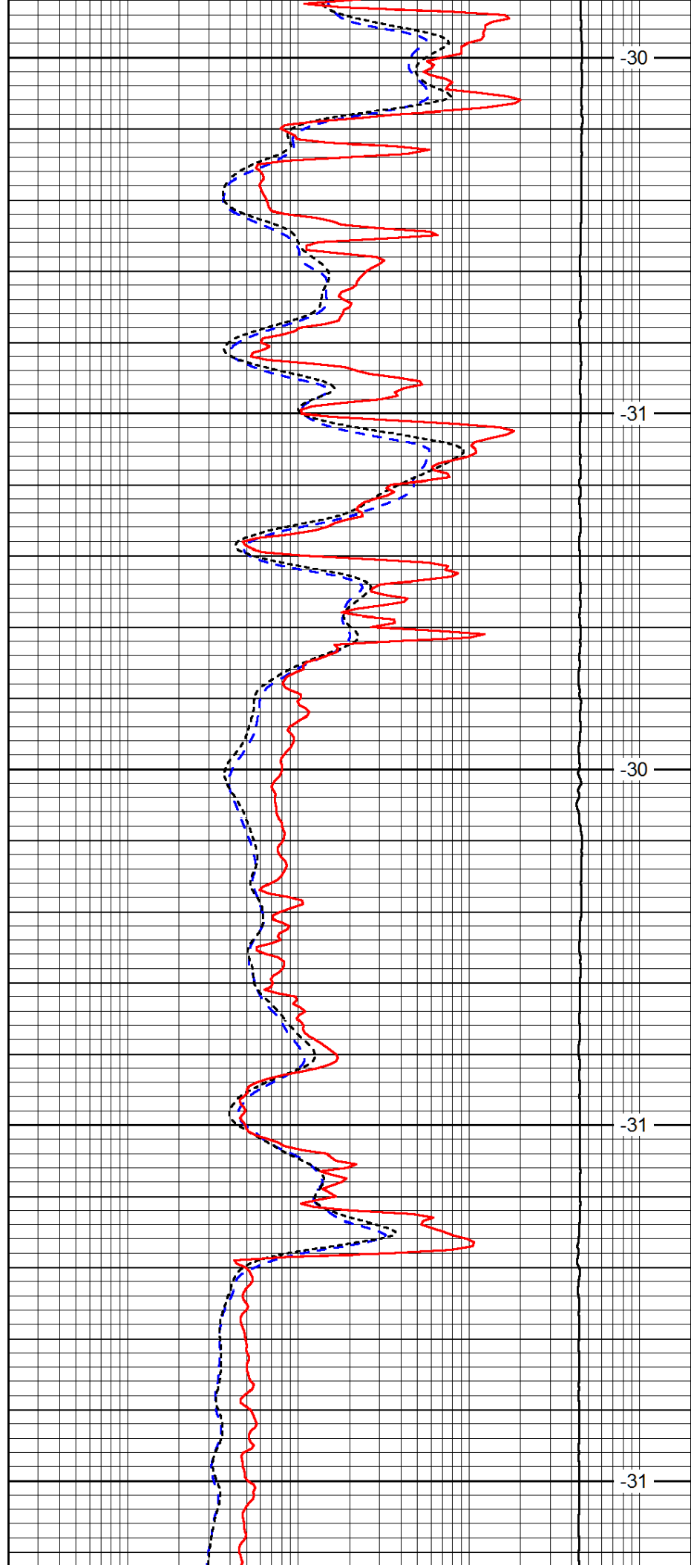
4300

4350

4400

4450

4500



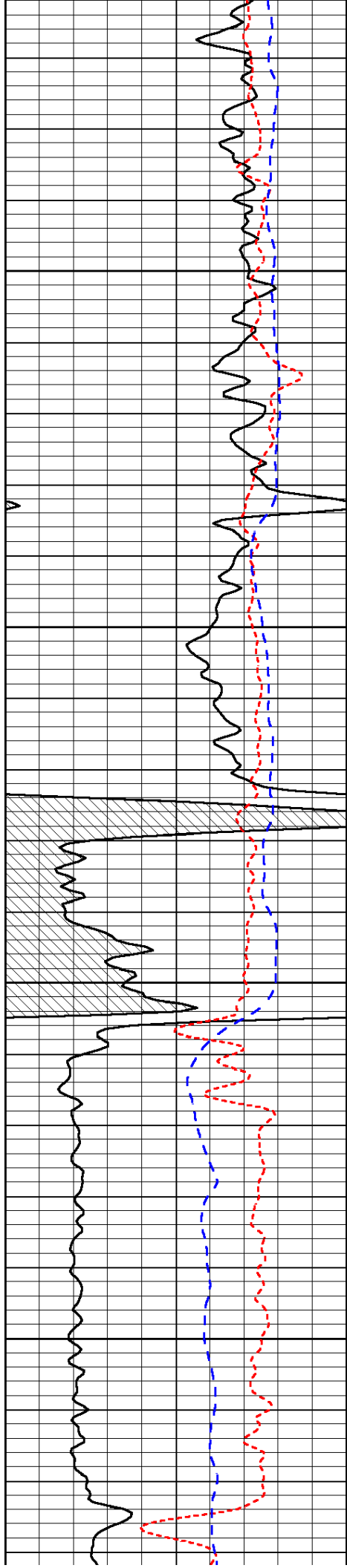
-30

-31

-30

-31

-31

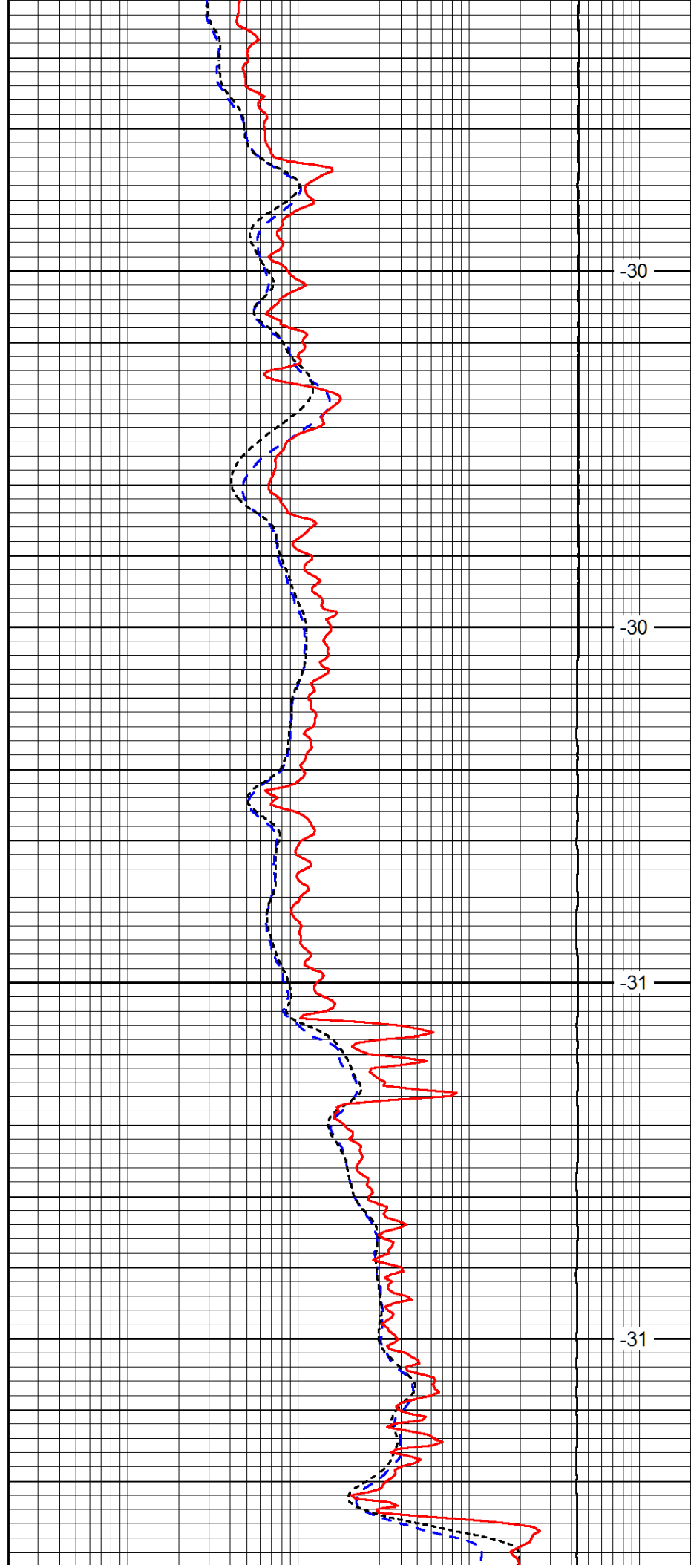


4550

4600

4650

4700

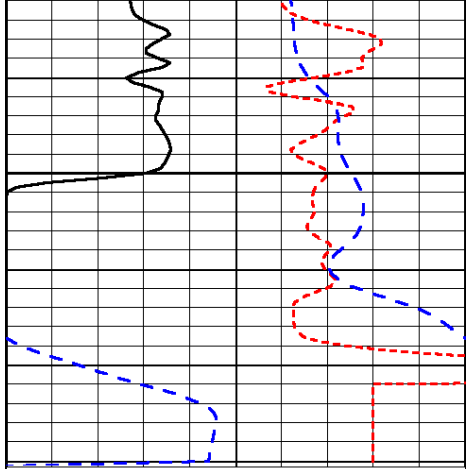


-30

-30

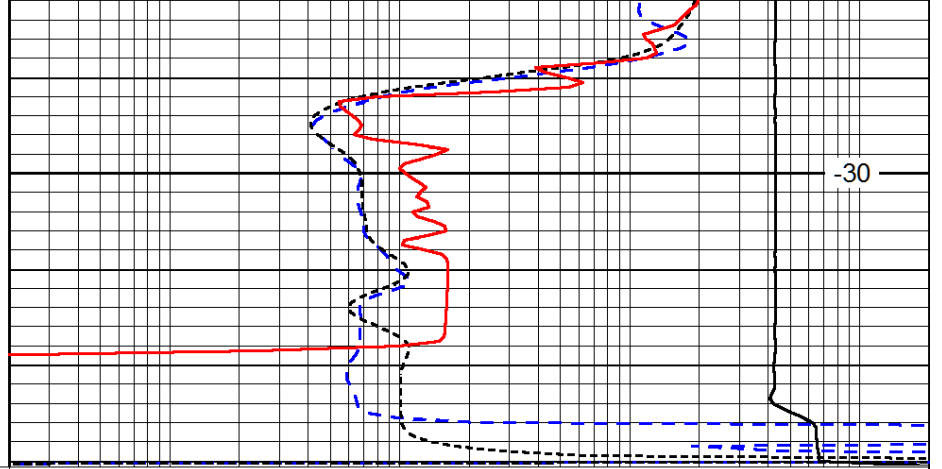
-31

-31



0	Gamma Ray	150
-160	RxoRt	40
-200	0	

4750



0.2	Deep Resistivity	2000
0.2	Medium Resistivity	2000
0.2	Shallow Resistivity	2000
10000	Line Tension	0

-30

LSPD