



MIDWEST SURVEYS
 LOGGING - PERFORATING - CONSULTING SERVICES
 P.O. Box 68, Osawatomie, KS 66064
 913 / 755 - 2128

GAMMA RAY / NEUTRON / CCL

File No. _____

Company **Diamond "B" Miami Flood, Ltd**
 Well **Murphy No. WM-4**
 Field **Paola - Rantoul**
 County **Miami** State **Kansas**

Location **4239' FSL & 505' FEL**
SW-SE-NE-NE

Other Services
 Perforate

Sec. 24 Typ. 16s Eye 21e
 Perforant Baum GL Elevation N/A
 Log Measured From GL
 Drilling Measured From GL

Date **09-26-2014**
 Run Number **One**
 Depth Dier **731.0**
 Depth Logger **724.6**
 Bottom Logged Interval **723.6**
 Top Log Interval **20.0**
 Fluid Level **Full**

Type Fluid **Water**
 Density / Viscosity **NA**
 Salinity - PPM Cl **NA**
 Max. Recorded Temp **NA**
 Estimated Cement Top **0.0**
 Equipment No. **107** Location **Osawatomie**
 Recorderd By **Steve Wandsch**
 Witnessed By **Jim Farley**

BORE-HOLE RECORD				CASING RECORD			
RUN	BIT	FROM	TO	SIZE	WT.	FROM	TO
One	8.75"	0.0	20.0	6.00"	14.0 #	0.0	20.0
Two	5.625"	20.0	731.0	2.875"	6.5 #	0.0	727.0

<<< Fold Here >>>

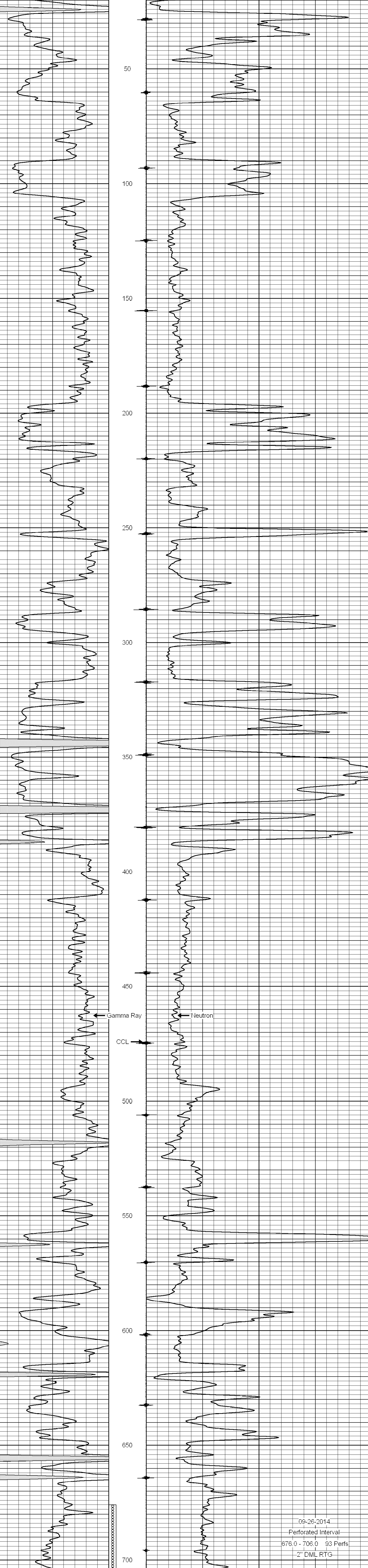
All interpretations are opinions based on inferences from electrical or other measurements and we cannot and do not guarantee the accuracy or correctness of any interpretation, and we shall not, except in the case of gross or willful negligence on our part, be liable or responsible for any loss, costs, damages, or expenses incurred or sustained by anyone resulting from any interpretation made by any of our officers, agents or employees. These interpretations are also subject to our general terms and conditions set out in our current Price Schedule.

Comments

Drilling Contractor :
Dale Jackson Production Company

Database File: **murphy 4wm.db**
 Dataset Pathname: **pass1**
 Presentation Format: **gr-n-ccl**
 Dataset Creation: **Fri Sep 26 13:05:03 2014 by Log SCH 111116**
 Charted by: **Depth in Feet scaled 1:240**

0	Gamma Ray (cps)	150	-1 CCL 1	10	Neutron (cps)	2100
150	Gamma Ray (cps)	300				



0	Gamma Ray (cps)	150	-1 CCL 1	10	Neutron (cps)	2100
150	Gamma Ray (cps)	300				