



**GAMMA RAY  
NEUTRON  
COMPLETION LOG**

Company **POSTROCK ENERGY CORP.**  
 Well **GROSDIDIER, FRANCIS E. #15-35**  
 Field **CHEROKEE BASIN CBM**  
 County **NEOSHO** State **KANSAS**

Location: **API #: 15-133-27763-00-00**  
**1520 FSL & 640 FEL**  
**SW SE NE SE**  
**SEC 15 TWP 28S RGE 20E**  
 Permament Datum **GL** Elevation **919'**  
 Log Measured From **GL**  
 Drilling Measured From **GL**  
 Date **7-29-2014**  
 Run Number **1 NW**  
 Depth Driller **600.9'**  
 Depth Logger **600.9'**  
 Top Log Interval **0**  
 Bottom Logged Interval **600.9'**  
 Fluid Level **FULL**  
 Type Fluid **WATER**

Production Casing **2 7/8" @ TD**  
 Max. Recorded Temp. **@**  
 Estimated Cement Top **@**  
 Calculated Cement Top **@**  
 Amount & Type Cement **@**  
 Drilling Contractor **@**  
 Equipment Number **105**  
 Location **GORMALEY, R.**  
 Recorded By **MICHELS, J.**  
 Witnessed By

Company **POSTROCK ENERGY CORP.**  
 Well **GROSDIDIER, FRANCIS E. #15-35**  
 Field **CHEROKEE BASIN CBM**  
 County **NEOSHO** State **KANSAS**

<<< Fold Here >>>

All interpretations are opinions based on inferences from electrical or other measurements and we cannot and do not guarantee the accuracy or correctness of any interpretation, and we shall not, except in the case of gross or willful negligence on our part, be liable or responsible for any loss, costs, damages, or expenses incurred or sustained by anyone resulting from any interpretation made by any of our officers, agents or employees. These interpretations are also subject to our general terms and conditions set out in our current Price Schedule.

Comments

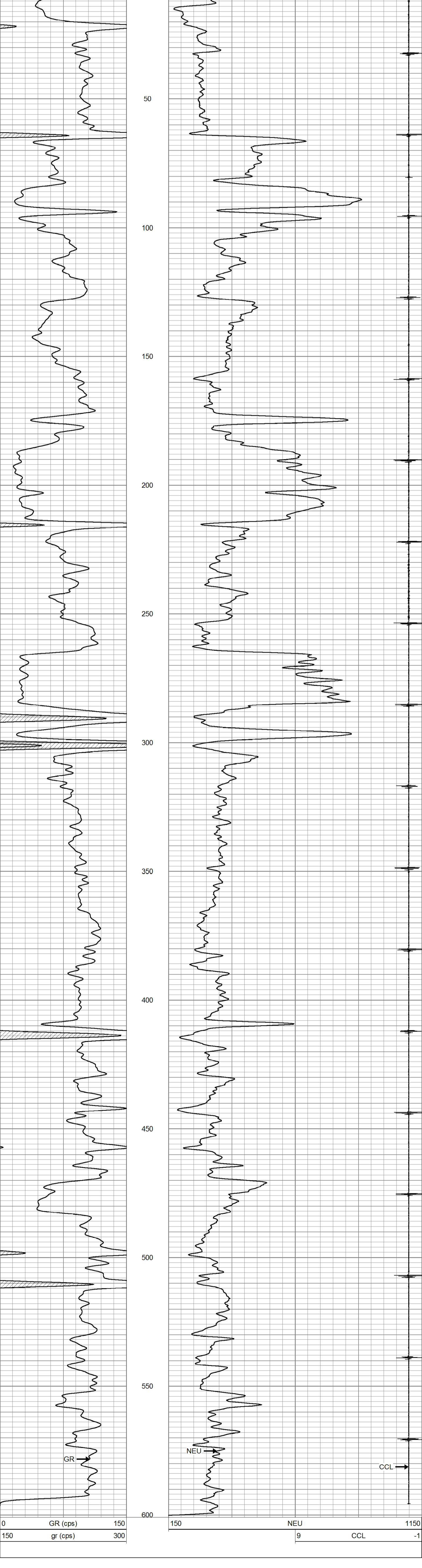
**THANK YOU**

Sensor	Offset (ft)	Schematic	Description	Len (ft)	OD (in)	Wt (lb)
GR	7.17		GR-TITAN_169 (1.69TTGRN) Titan 1 11/16" Gamma Ray	3.82	1.69	17.99
CCL	5.05		CCL-TITAN_169 (TIT169) Titan 1 11/16" Logging CCL	1.83	1.69	7.50
NEU	0.63		NEU-TITAN_169 (TIT169_001) Titan 1 11/16" Neutron	4.33	1.69	20.00

Dataset: grosdidier #15-35.db: field/well/run1/pass1  
 Total Length: 9.99 ft  
 Total Weight: 45.49 lb  
 O.D.: 1.69 in

Database File: grosdidier #15-35.db  
 Dataset Pathname: pass1  
 Presentation Format: gr-n-ccl  
 Dataset Creation: Tue Jul 29 13:49:26 2014 by Log Std Casedhole 07122  
 Charted by: Depth in Feet scaled 1:240

0	GR (cps)	150	150	NEU	1150
150	gr (cps)	300	9	CCL	-1



0	GR (cps)	150	150	NEU	1150
150	gr (cps)	300	9	CCL	-1



Company **POSTROCK ENERGY CORP.**  
 Well **GROSDIDIER, FRANCIS E. #15-35**  
 Field **CHEROKEE BASIN CBM**  
 County **NEOSHO SEC 15 TWP 28S RGE 20E**  
 State **KANSAS** Date **7-29-2014**