



**MIDWEST SURVEYS**  
 LOGGING - PERFORATING - CONSULTING SERVICES  
 P.O. Box 68, Osawatomie, KS 66064  
 913.755.2128

**GAMMA RAY / NEUTRON / CCL**

File No:

Company: **Heavy Oil Treatment Solutions, LLC**

Well: **Robbins No - 9**

Field: **Six Corners**

County: **Leavenworth** State: **Kansas**

Location: **4785' FSL & 2475' FEL**

Other Services: **SM-MW-MW-NE**

Sec. 23 Typ. 12s Rge. 20e

Permanent Datum: **GL** Elevation: **895'**

Log Measured From: **GL** K.B. NA

Drilling Measured From: **GL** D.F. NA

Date: **07-30-2014** Elevation: **GL 895'**

Run Number: **One**

Depth Logger: **875.0**

Bottom Logged Interval: **984.0**

Top Log Interval: **20.0**

Fluid Level: **Full**

Type Fluid: **Water**

Density / Viscosity: **NA**

Salinity - PPM Cl: **NA**

Max. Recorded Temp: **NA**

Estimated Cement Top: **0.0**

Equipment No.: **107** Location: **Osawatomie**

Recorded By: **Steve Winkler**

BOREHOLE RECORD		CASING RECORD		TO
NO.	BIT	FROM	TO	TO
One	12.25"	0.0	8325"	81.0
Two	6.75"	81.0	4.50"	10.5 #
				0.0
				688.0

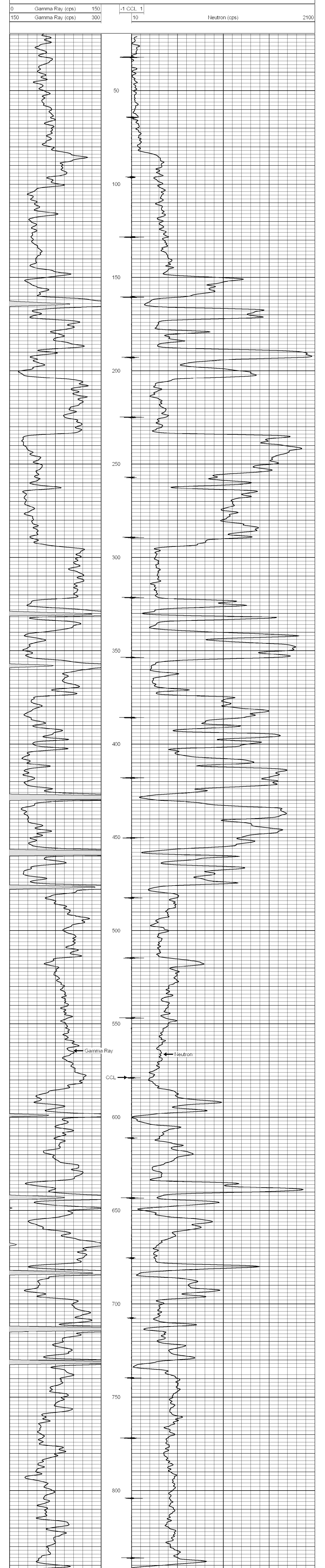
<<< Fold Here >>>

All interpretations are opinions based on inferences from electrical or other measurements and we cannot and do not guarantee the accuracy or correctness of any interpretation, and we shall not, except in the case of gross or willful negligence on our part, be liable or responsible for any loss, costs, damages, or expenses incurred or sustained by anyone resulting from any interpretation made by any of our officers, agents or employees. These interpretations are also subject to our general terms and conditions set out in our current Price Schedule.

Comments

Drilling Contractor :  
 Hat Drilling, LLC

Database File: robbins 9.db  
 Dataset Pathname: pass1  
 Presentation Format: gr-n-ccl  
 Dataset Creation: Wed Jul 30 14:09:39 2014 by Log SCH 111116  
 Charted by: Depth in Feet scaled 1:240



0 Gamma Ray (cps) 150  
 150 Gamma Ray (cps) 300  
 -1 CCL 1  
 10 Neutron (cps) 2100