



**COMPLETION
& PRODUCTION
SERVICES CO.**

**MICRO
LOG**

Company	ETERNITY EXPLORATION, LLC.	Company	ETERNITY EXPLORATION, LLC.
Well	WERTH FAMILY #1	Well	WERTH FAMILY #1
Field		Field	
County	SHERIDAN	County	SHERIDAN
State	KANSAS	State	KANSAS
Location:	API # : 15-179-21359-0000	Other Services	CDL/CNL DIL
Permanent Datum	825' FNL & 2310' FEL	Elevation	K.B. 2629
Log Measured From	N/2 - SW - NW - NE		D.F. 2627
Drilling Measured From	SEC 9 TWP 10S RGE 26W		G.L. 2624
	GROUND LEVEL	Elevation	2624
	KELLY BUSHING 5' A.G.L.		
	KELLY BUSHING		

Date	5/22/14
Run Number	TWO
Depth Driller	4155
Depth Logger	4160
Bottom Logged Interval	4158
Top Log Interval	3600
Casing Driller	8 5/8" @ 222
Casing Logger	219
Bit Size	7 7/8"
Type Fluid in Hole	CHEMICAL MUD
Density / Viscosity	9.3/51
pH / Fluid Loss	8.5/10.0
Source of Sample	FLOWLINE
Rm @ Meas. Temp	.55 @ 75F
Rmt @ Meas. Temp	.41 @ 75F
Rmc @ Meas. Temp	.66 @ 75F
Source of Rmf / Rmc	MEASUREMENT
Rm @ BHT	.34 @ 118F
Time Circulation Stopped	2 HOURS
Time Logger on Bottom	
Maximum Recorded Temperature	118F
Equipment Number	4010
Location	HAYS, KANSAS
Recorded By	JASON CAPPELLUCCI
Witnessed By	SCOTT ALBERG

<<< Fold Here >>>

All interpretations are opinions based on inferences from electrical or other measurements and we cannot and do not guarantee the accuracy or correctness of any interpretation, and we shall not, except in the case of gross or willful negligence on our part, be liable or responsible for any loss, costs, damages, or expenses incurred or sustained by anyone resulting from any interpretation made by any of our officers, agents or employees. These interpretations are also subject to our general terms and conditions set out in our current Price Schedule.

Comments

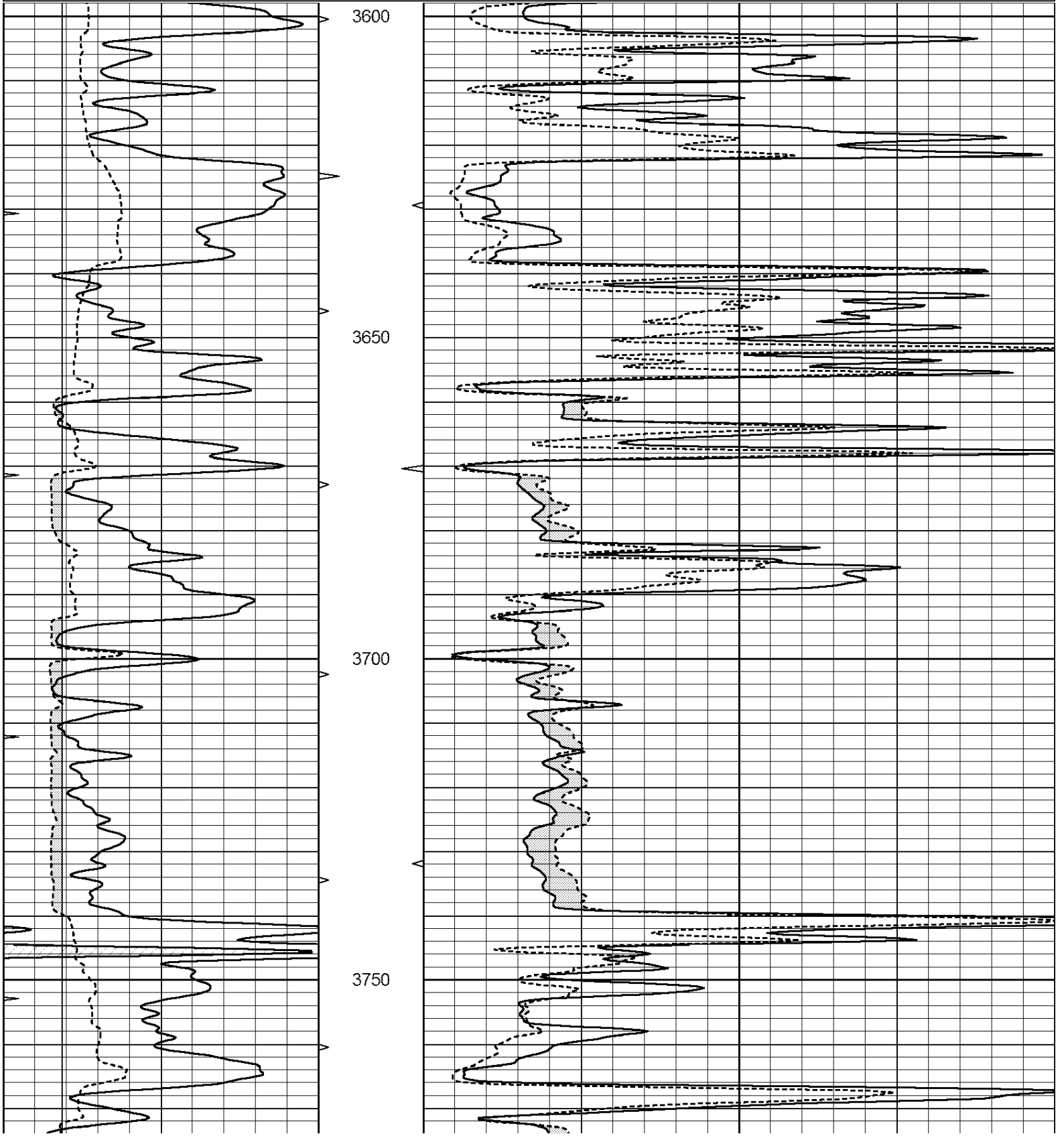
THANK YOU FOR USING NABORS, HAYS, KS. (785) 628-6395
DIRECTIONS:
I 70 & QUINTER EXIT (CASTLEROCK RD.) 10 MILES NORTH - 1/2 EAST - SOUTH INTO

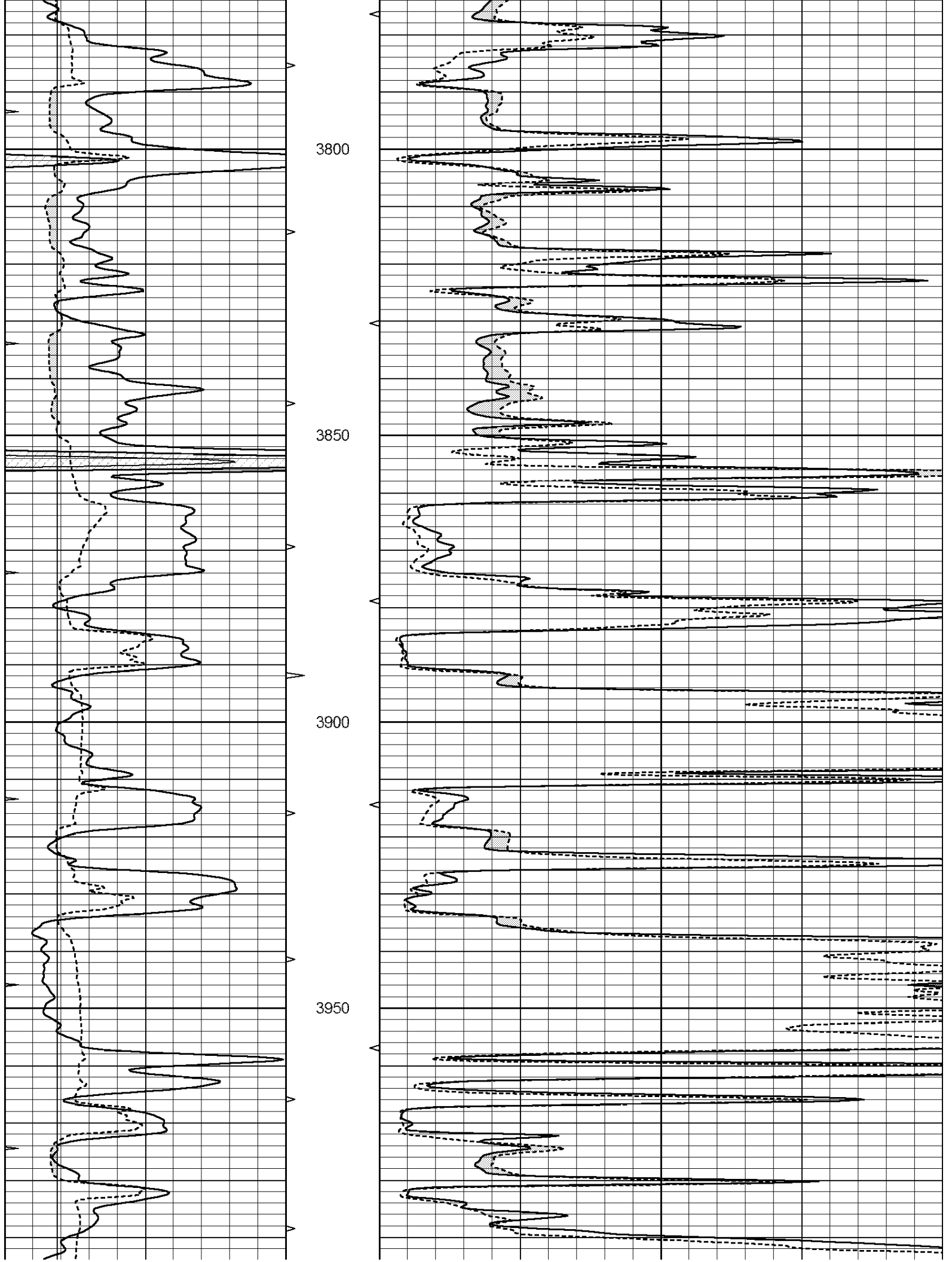


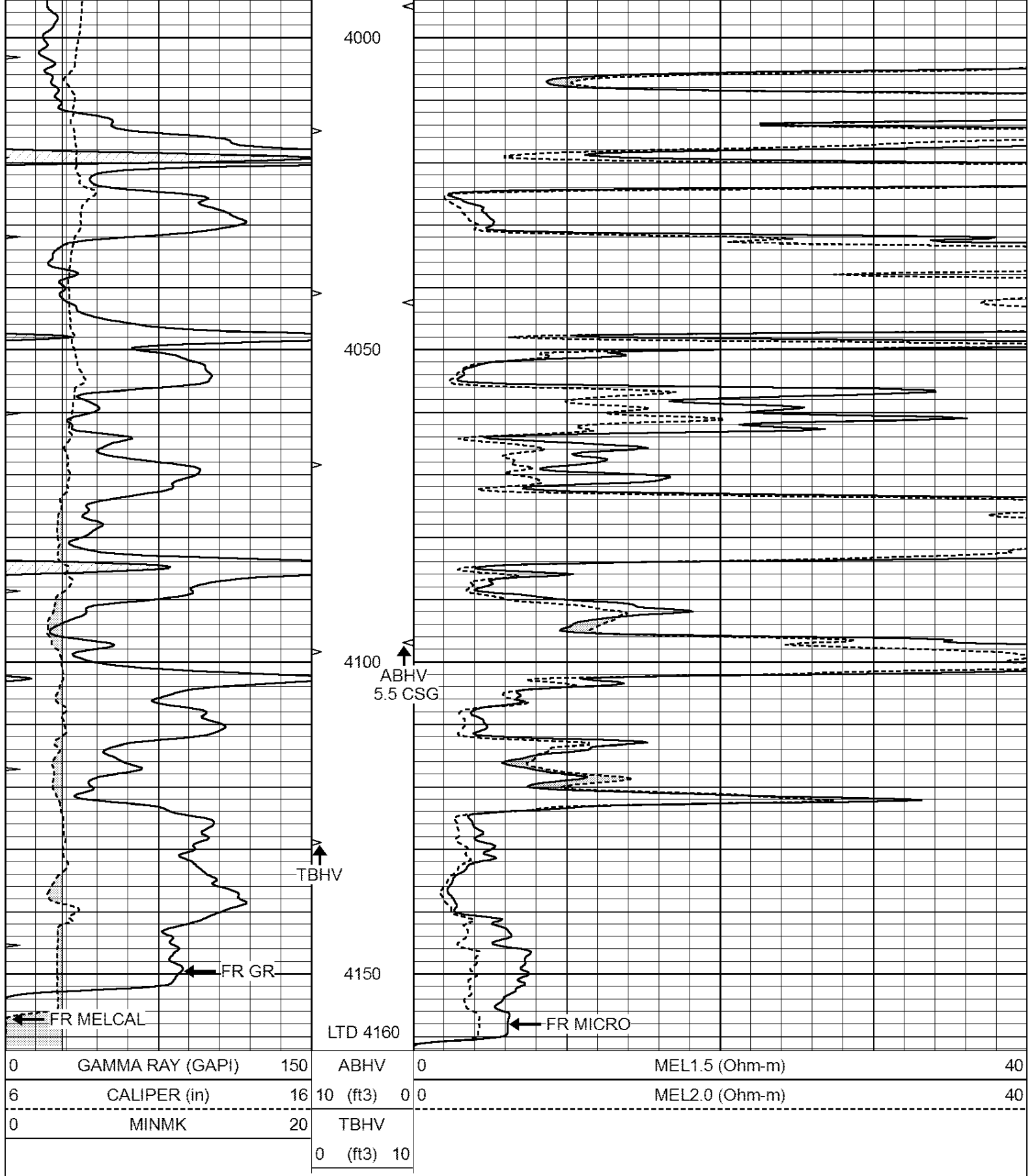
MAIN SECTION

Database File: 24247ddn.db
 Dataset Pathname: pass6.1
 Presentation Format: _micro
 Dataset Creation: Thu May 22 09:44:16 2014 by Calc Open-Cased 090629
 Charted by: Depth in Feet scaled 1:240

0	GAMMA RAY (GAPI)	150	ABHV	0	MEL1.5 (Ohm-m)	40
6	CALIPER (in)	16	10 (ft3)	0	MEL2.0 (Ohm-m)	40
0	MINMK	20	TBHV			
			0 (ft3)	10		



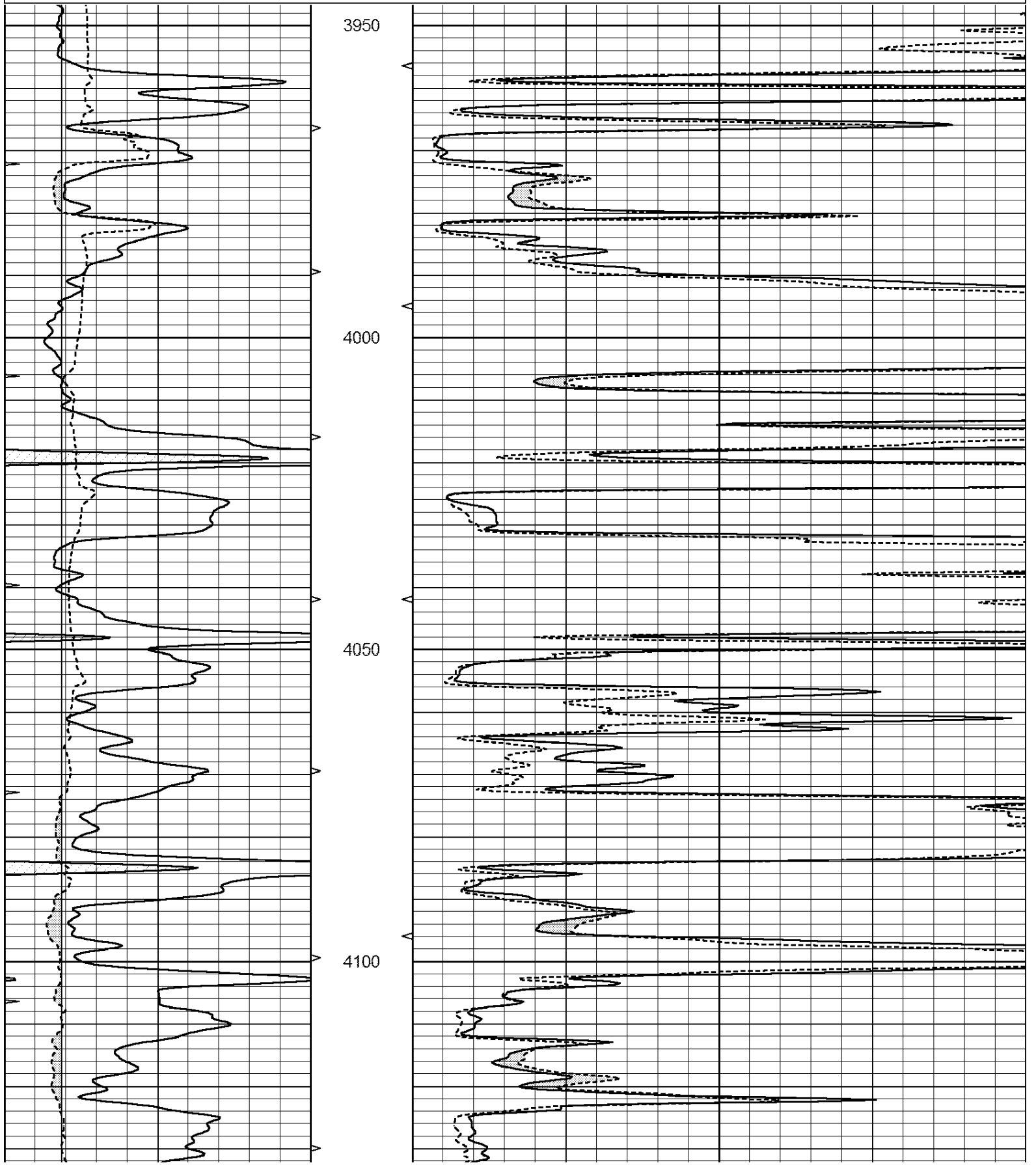


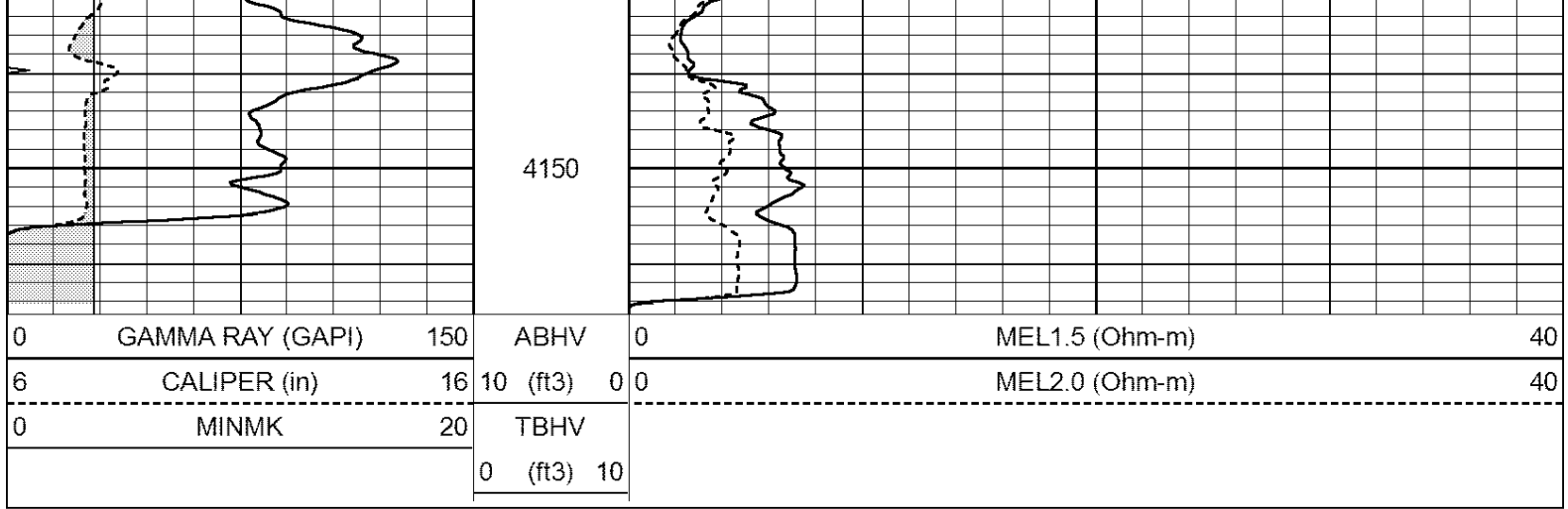


REPEAT SECTION

Dataset Patnname: pass5.2
 Presentation Format: _micro
 Dataset Creation: Thu May 22 09:40:51 2014 by Calc Open-Cased 090629
 Charted by: Depth in Feet scaled 1:240

0	GAMMA RAY (GAPI)	150	ABHV	0	MEL1.5 (Ohm-m)	40
6	CALIPER (in)	16	10 (ft3)	0 0	MEL2.0 (Ohm-m)	40
0	MINMK	20	TBHV			
			0 (ft3)	10		





Calibration Report

Database File: 24247ddn.db
 Dataset Pathname: pass5.2
 Dataset Creation: Thu May 22 09:40:51 2014 by Calc Open-Cased 090629

MICRO Calibration Report

Serial Number: MICRO6
 Tool Model: PROBE
 Performed: Fri Mar 14 21:54:54 2014

Caliper Calibration: Gain=5.542 Offset=-0.620

References	Low Cal	High Cal
Readings	8.000	14.000
	1.431	2.513

1.5" Calibration: Gain=38.075 Offset=0.000

References	Low Cal	High Cal
Readings	0.000	20.000
	0.004	1.196

2" Calibration: Gain=47.000 Offset=-0.600

References	Low Cal	High Cal
Readings	0.000	20.000
	0.006	0.913

Gamma Ray Calibration Report

Serial Number: GR5
 Tool Model: OPEN
 Performed: Thu May 15 22:33:18 2014

Calibrator Value: 1.0 GAPI

Background Reading:	0.0	cps
Calibrator Reading:	1.0	cps

Sensitivity: 0.8000 GAPI/cps