



**Sonic Cement
Bond Log**

15-007-24146-0000

Company **Chieftain Oil Company, Inc.**
 Well **AHS Cattle Company #4**
 Field **Stranathan**
 County **Barber** State **Kansas**

Location **1805' FNL & 2305' FEL
SE NW SW NE**

Sec: **12** Twp: **35S** Rge: **12W**

Other Services
Mast Trailer
Elevation
K.B. 1368
D.F. 1367
G.L. 1356

Run Number	One
Date Survey	5-13-2014
Date Cementing	5-3-2014
Type Cementing Operation	Primary
Depth Driller	5610
Depth Logger	5576
Logged Interval	5575 to 3600
Casing Driller	5.5 @ TD
Float Collar -- D.V. Tool	////
Squeeze Depth	////
Amount & Type Cement	////
Amount & Type Admix	////
Type Fluid In Hole	Water
Fluid Level	Full
Salinity PPM CL	////
Weight lb/gal -- Vis.	////
Approx. Logged Cement Top	////
Calculated Cement Top	3870
Max. Hole Temperature	////
Tool No.	Dig 01
Spacing Recorded	3-5
Equipment -- Location	01 Pratt
Recorded By	Dillon Ezell
Witnessed By	Ryan Moiz

<<< Fold Here >>>

All interpretations are opinions based on inferences from electrical or other measurements and we cannot and do not guarantee the accuracy or correctness of any interpretation, and we shall not, except in the case of gross or willful negligence on our part, be liable or responsible for any loss, costs, damages, or expenses incurred or sustained by anyone resulting from any interpretation made by any of our officers, agents or employees. These interpretations are also subject to our general terms and conditions set out in our current Price Schedule.

Comments

Thank you for using Excel Wireline (620) 388-5676

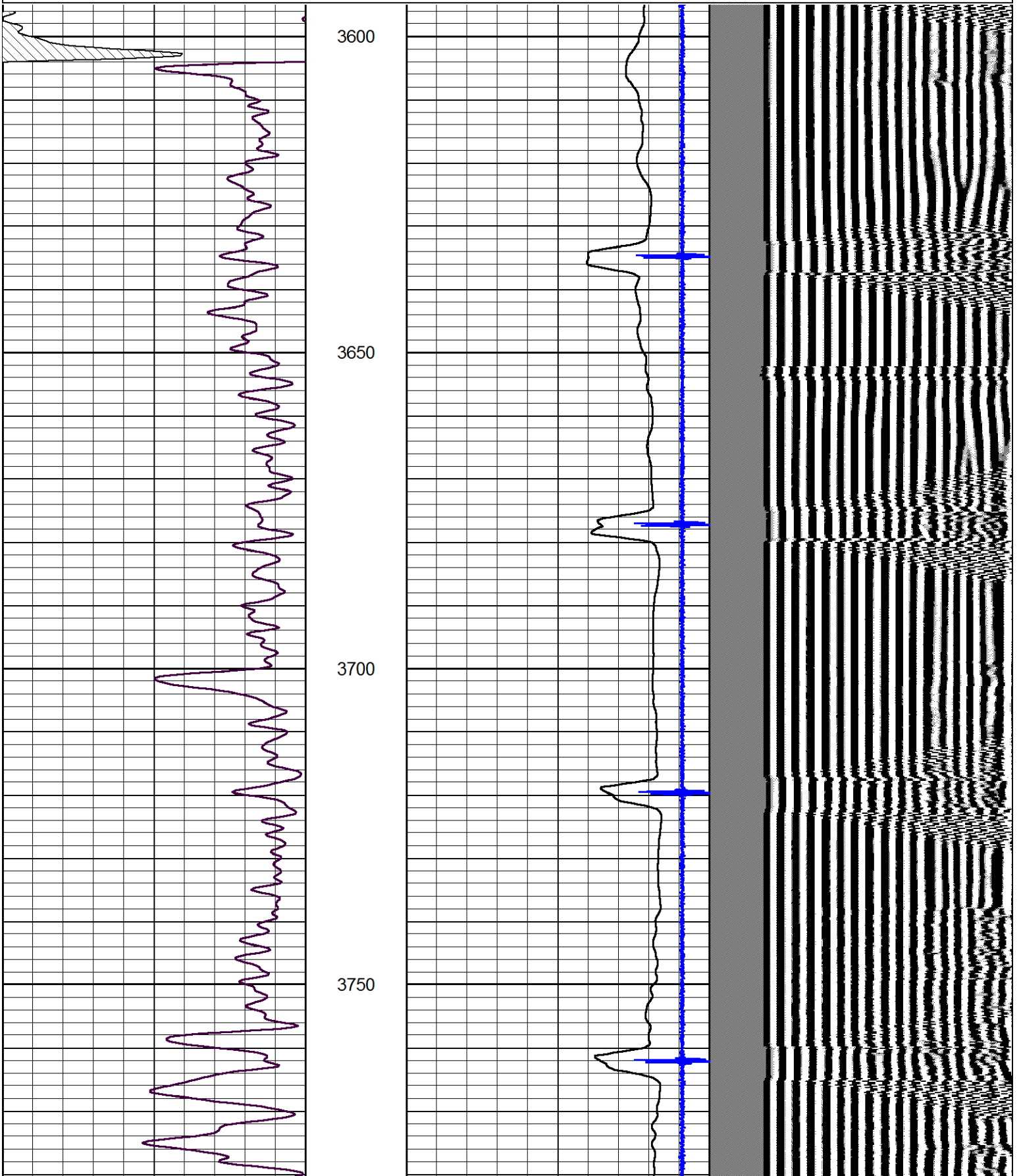
Hwy 281 & K-2 jct
1/2 West into

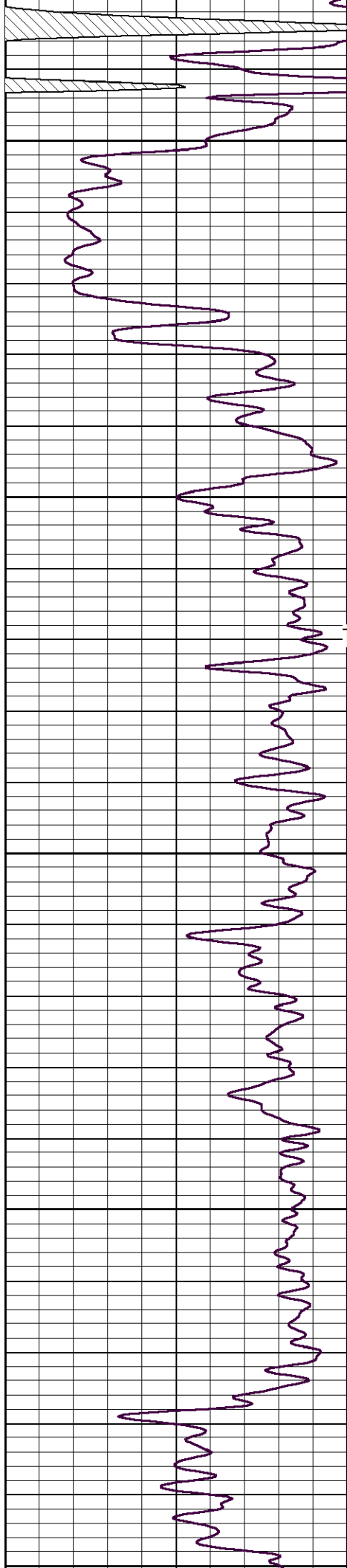


Main Pass

Database File chieftain_ahs_cattle_company#4.db
 Dataset Pathname grcbl/pass4
 Presentation Format cblcr
 Dataset Creation Tue May 13 08:51:25 2014
 Charted by Depth in Feet scaled 1:240

0	Gamma Ray (GAPI)	150	amp3ft	3	Casing Collars	-0.3	200	wvf5ft	1200
			(mV)	0	Amplified Amplitude (mV)	100			
			-100 10	0	Pipe Amplitude (mV)	20			





3800

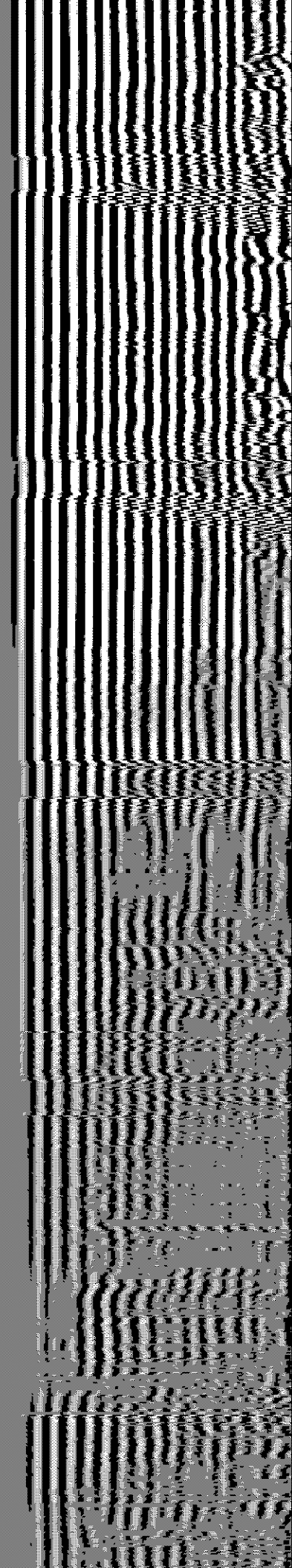
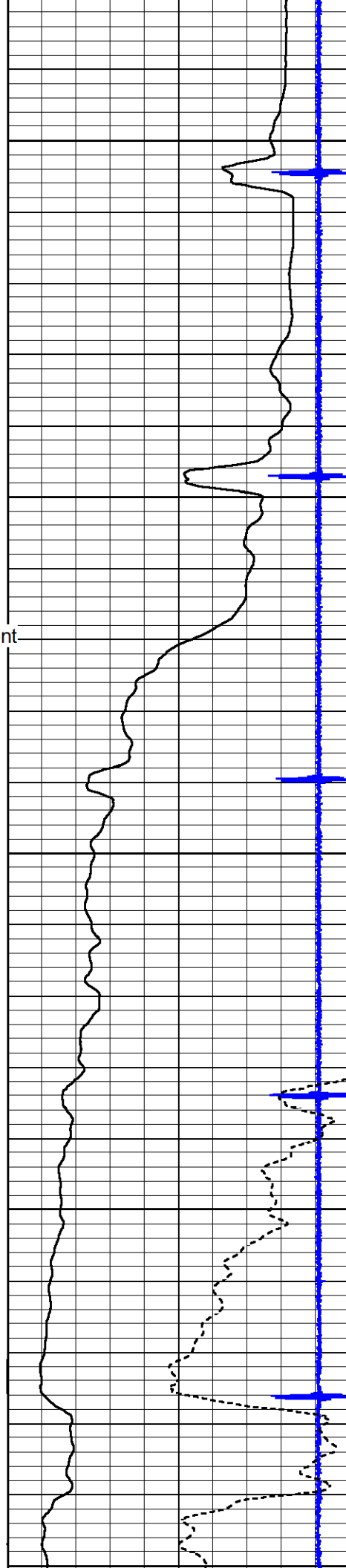
3850

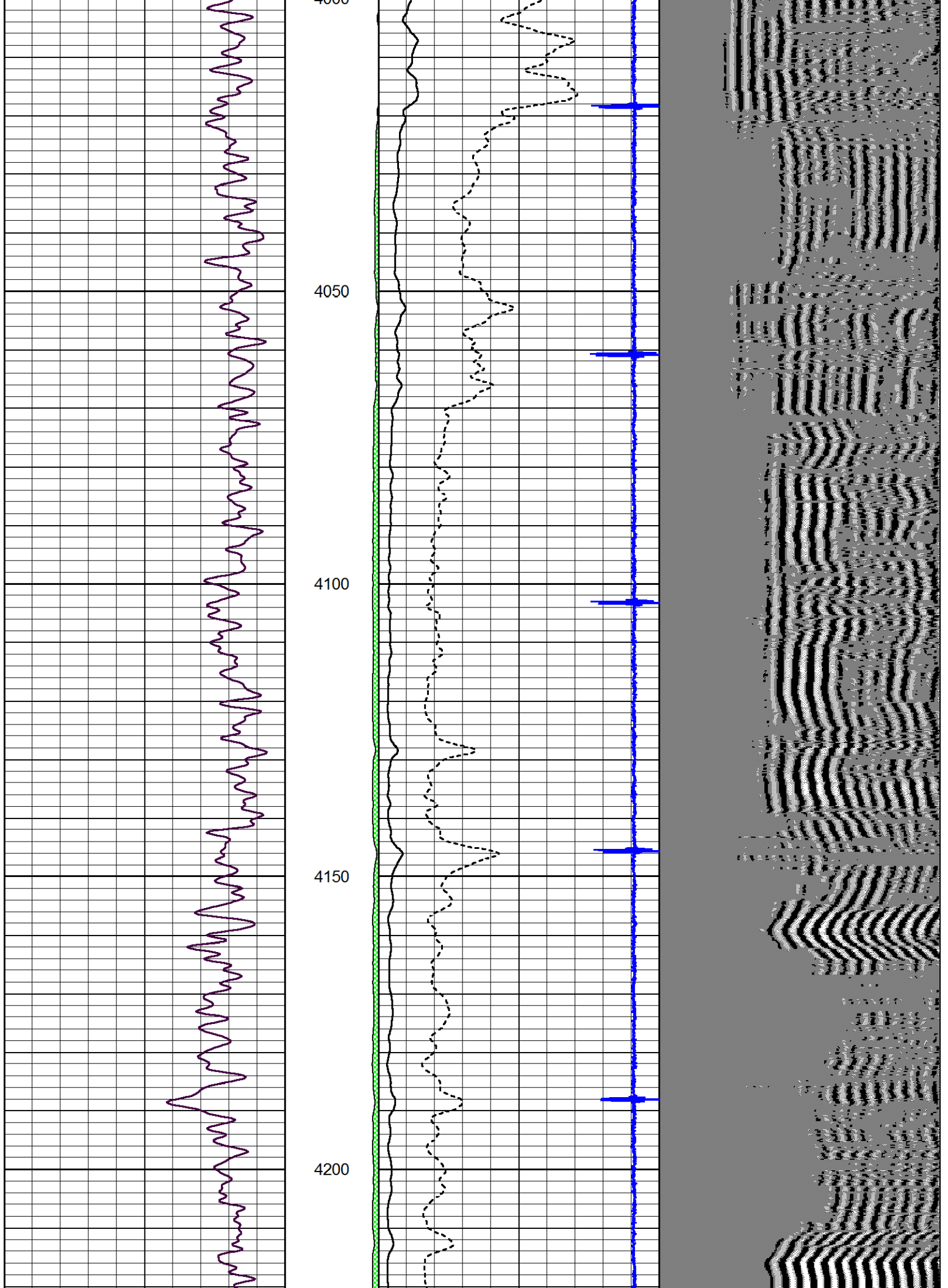
Top of Cement

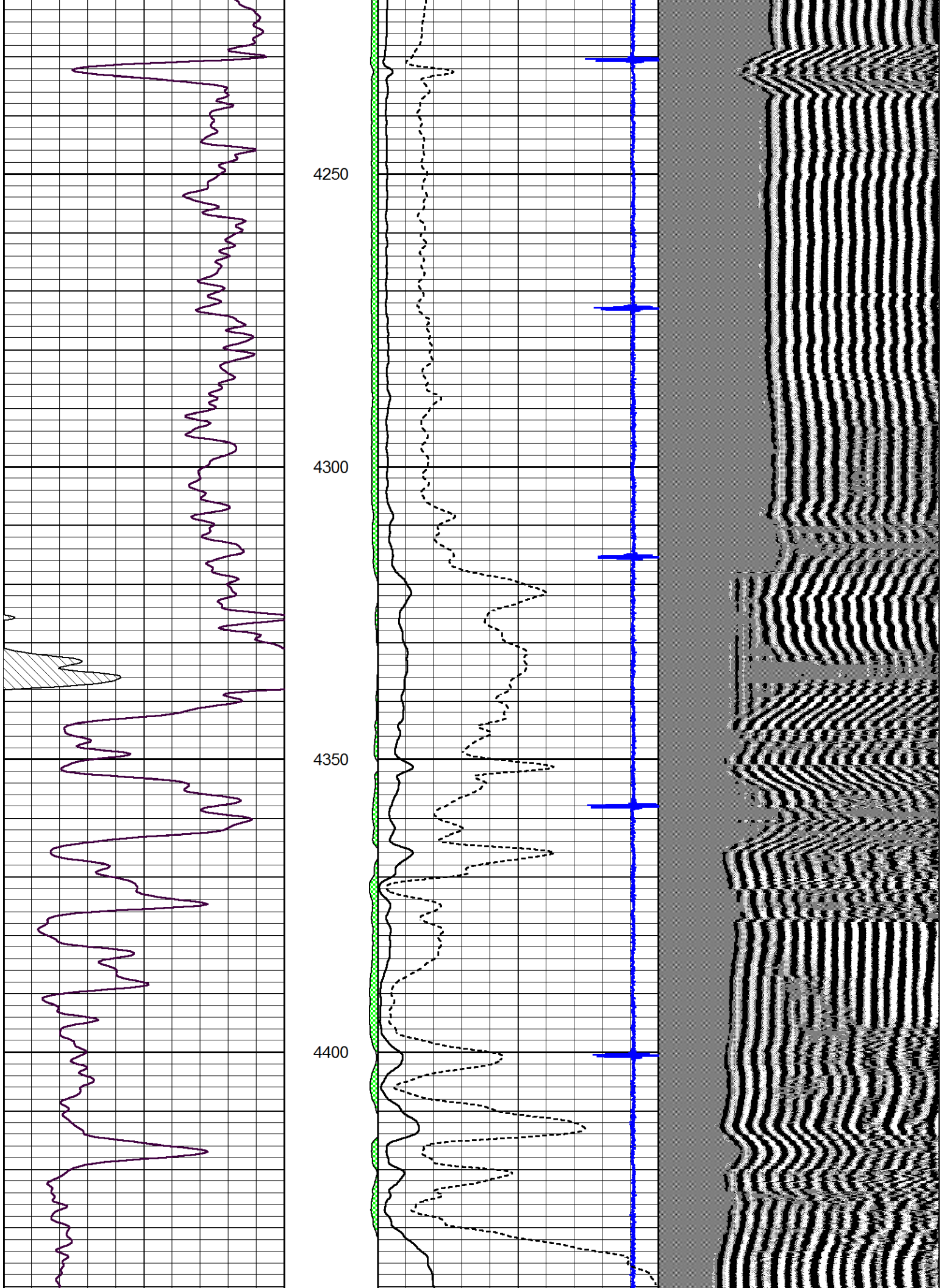
3900

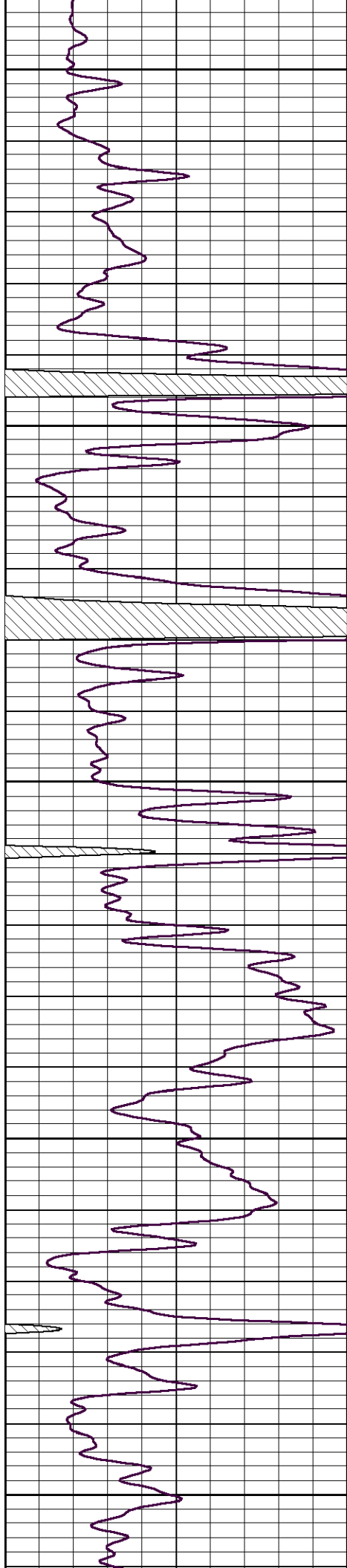
3950

4000









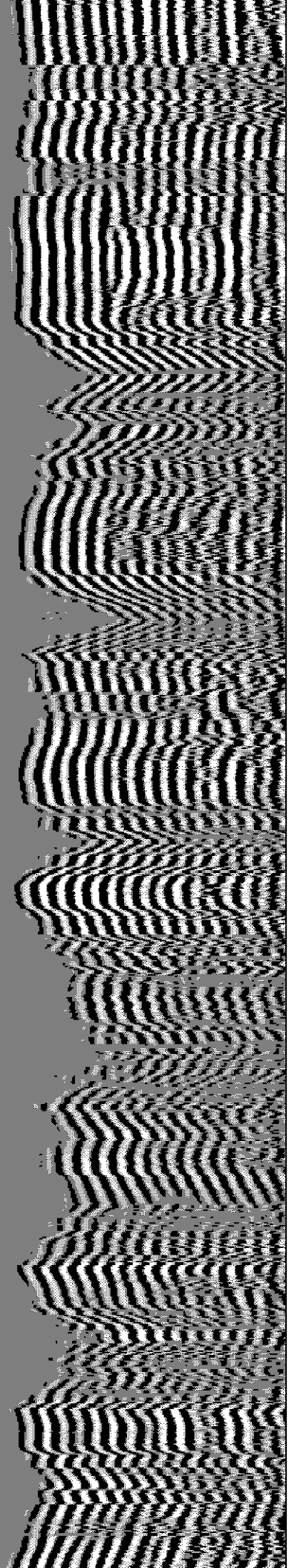
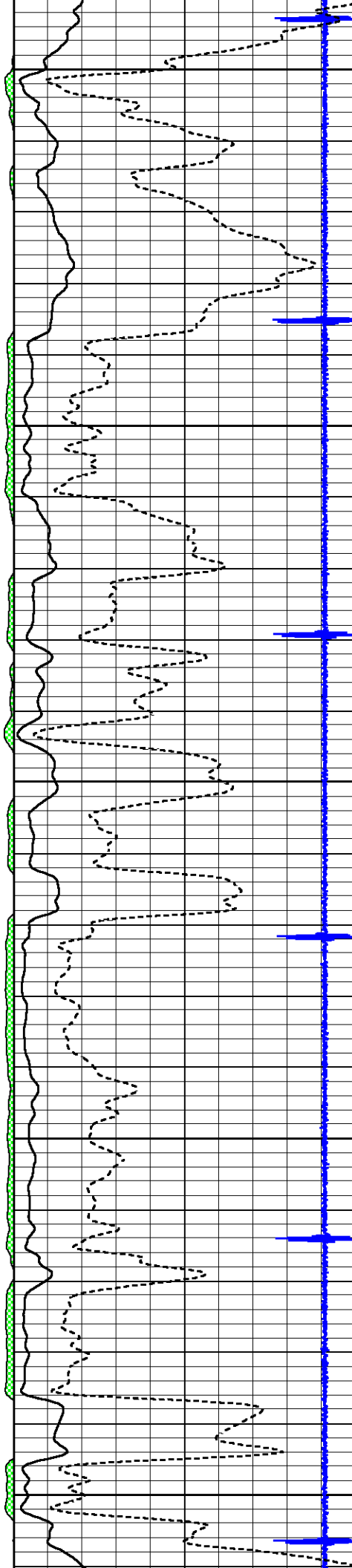
4450

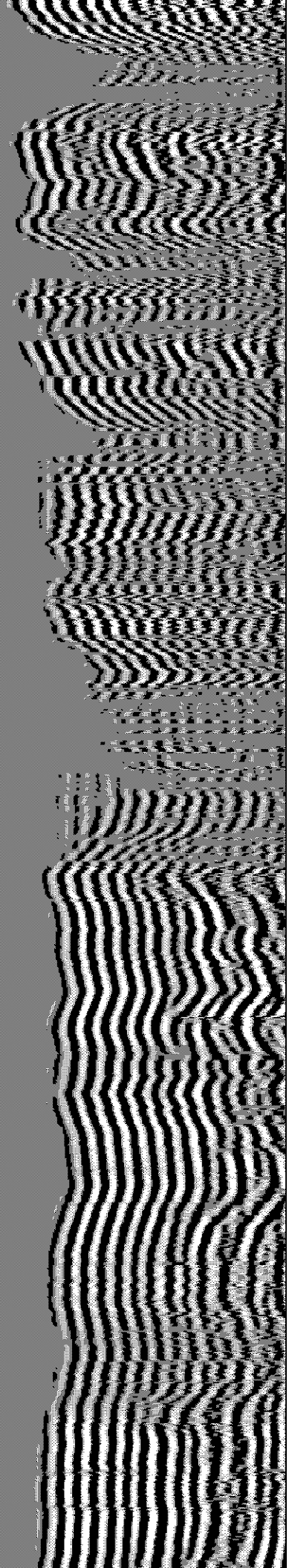
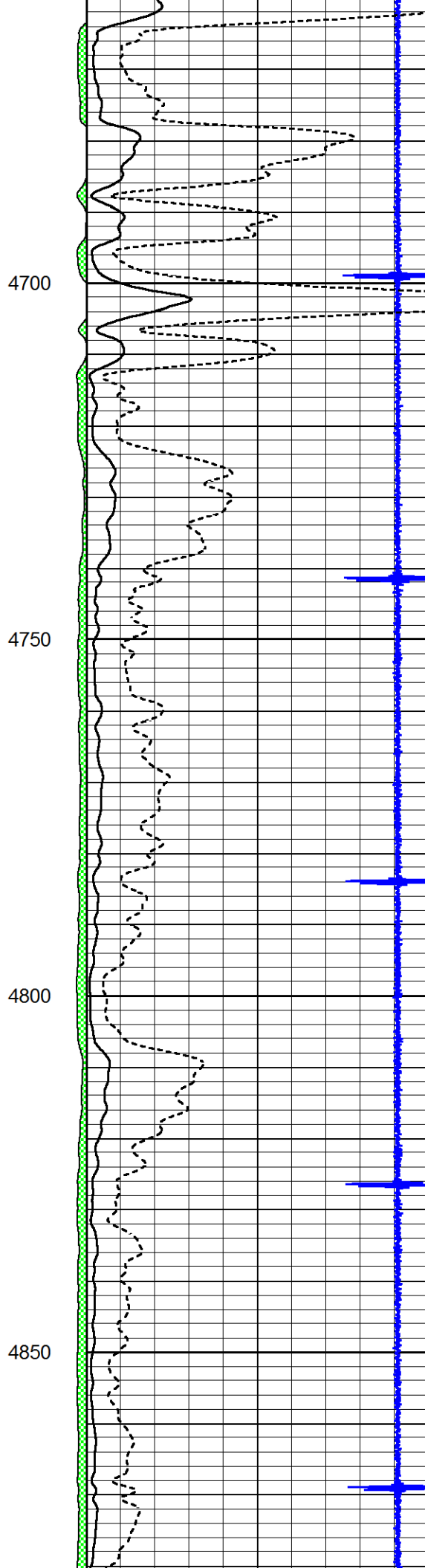
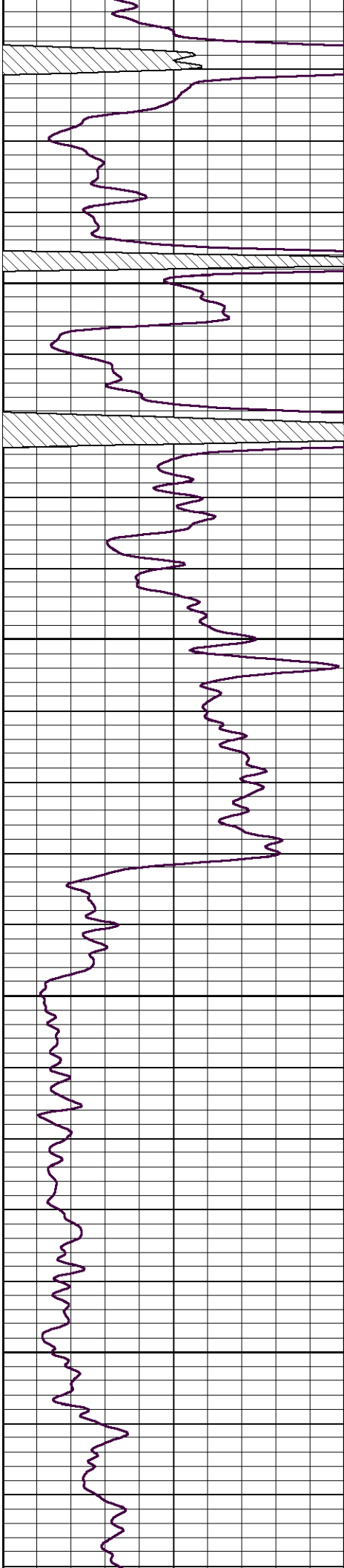
4500

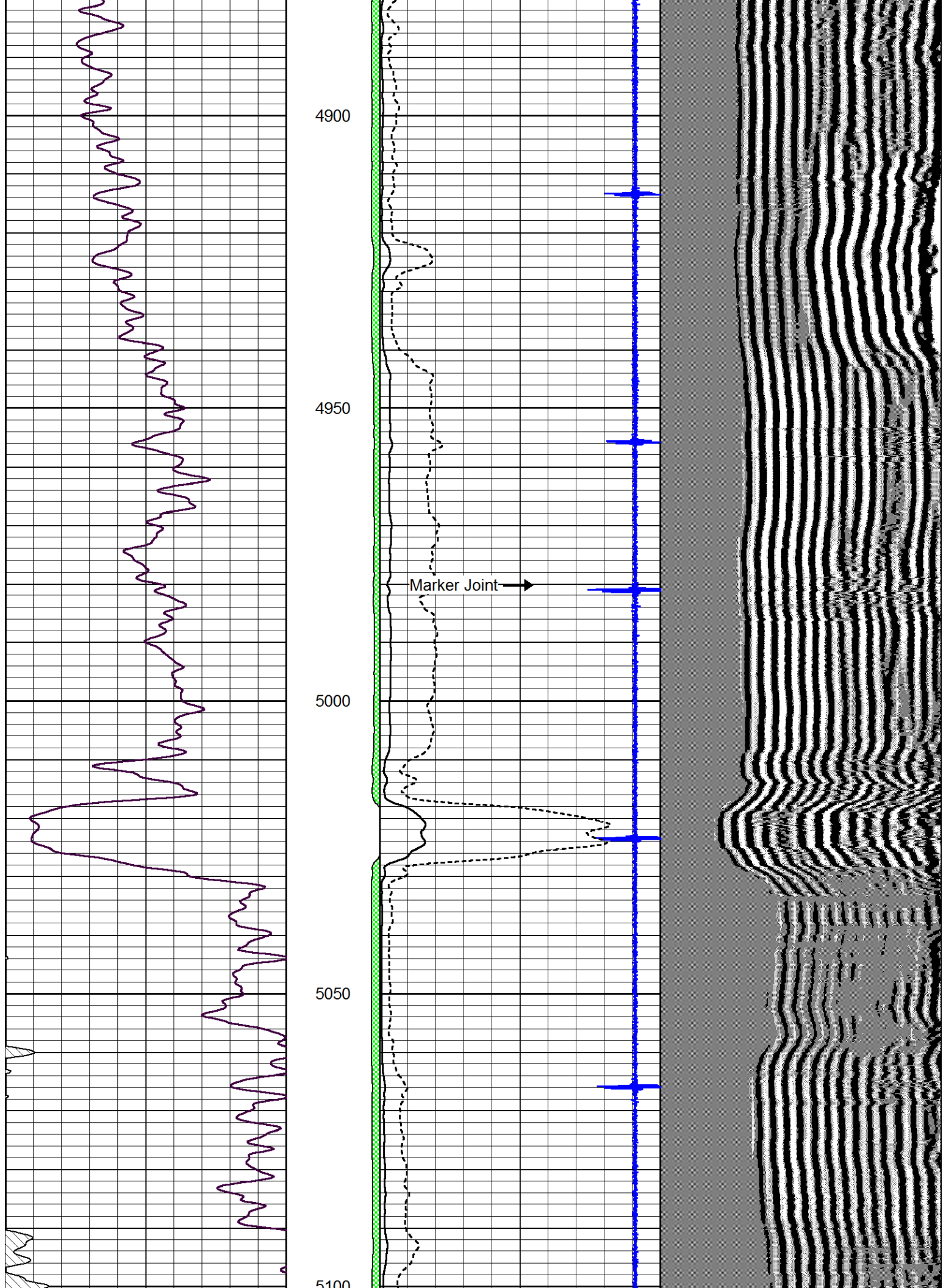
4550

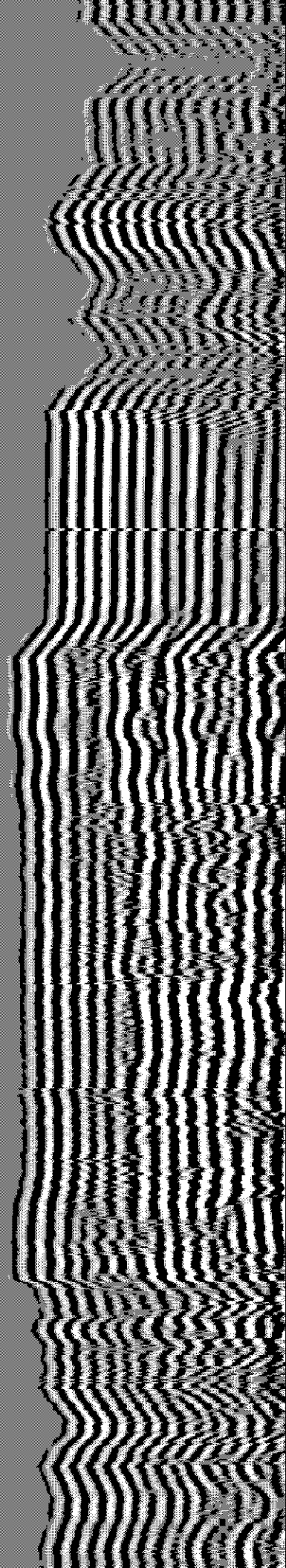
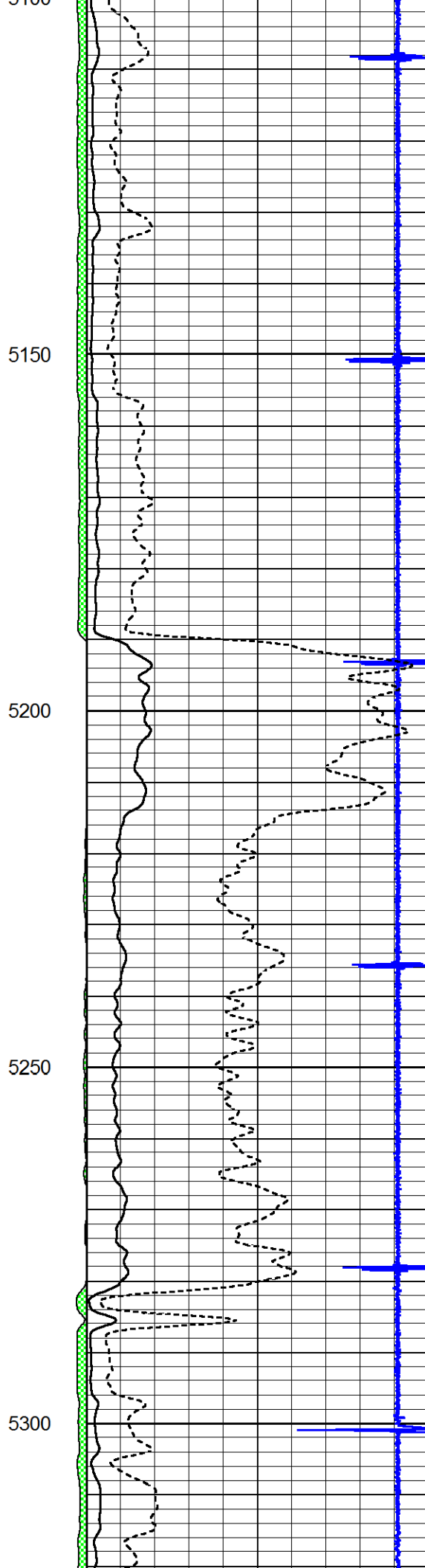
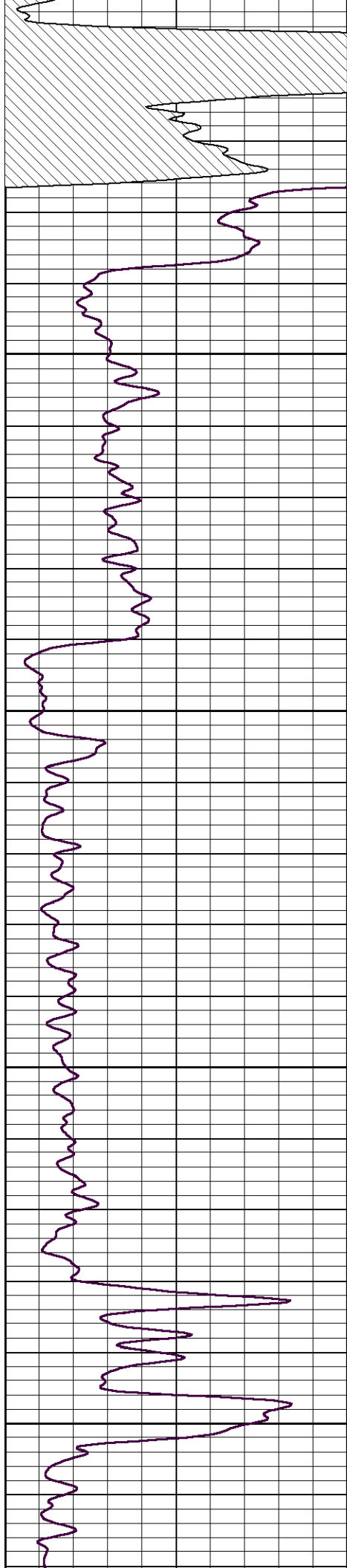
4600

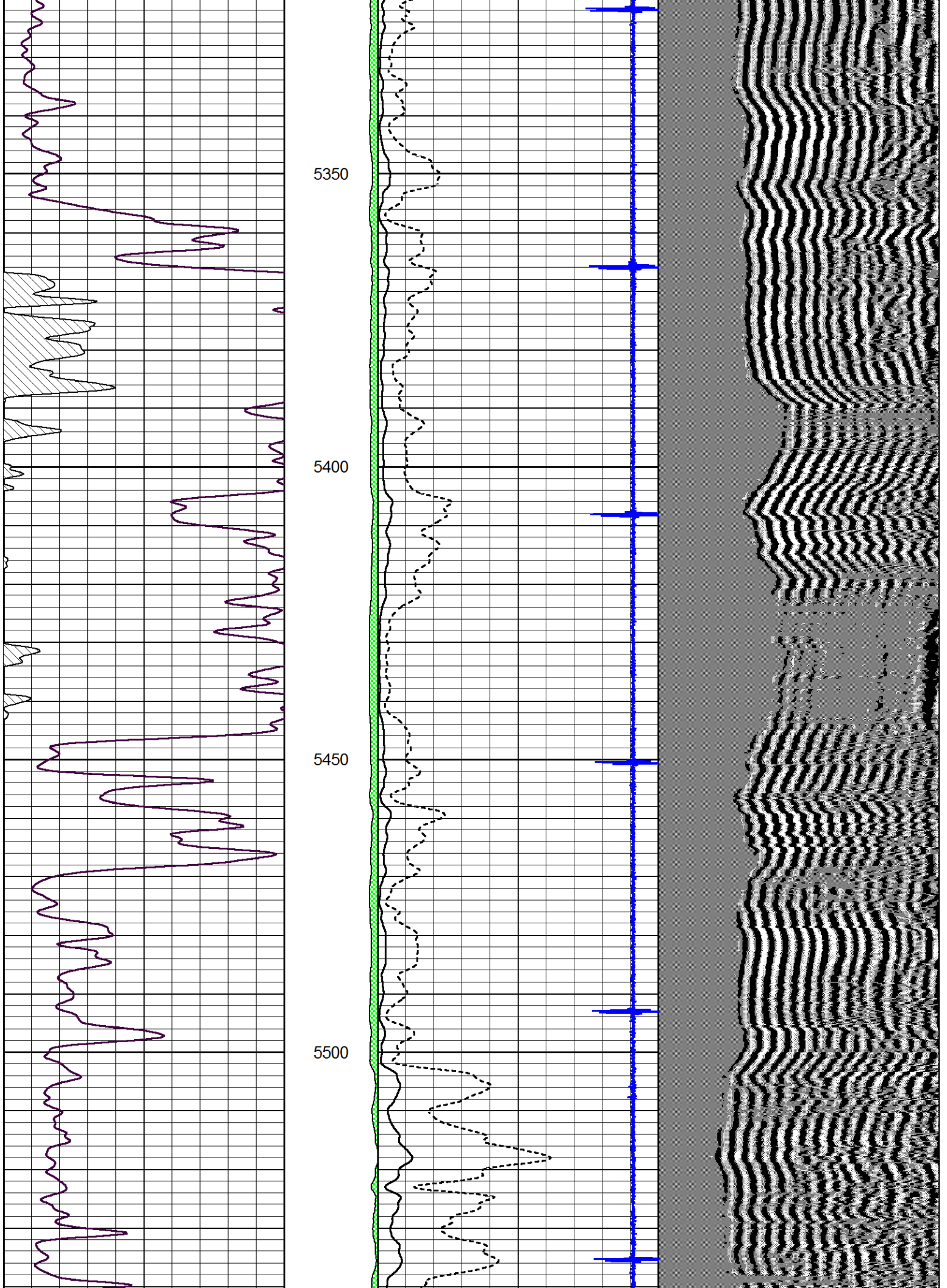
4650

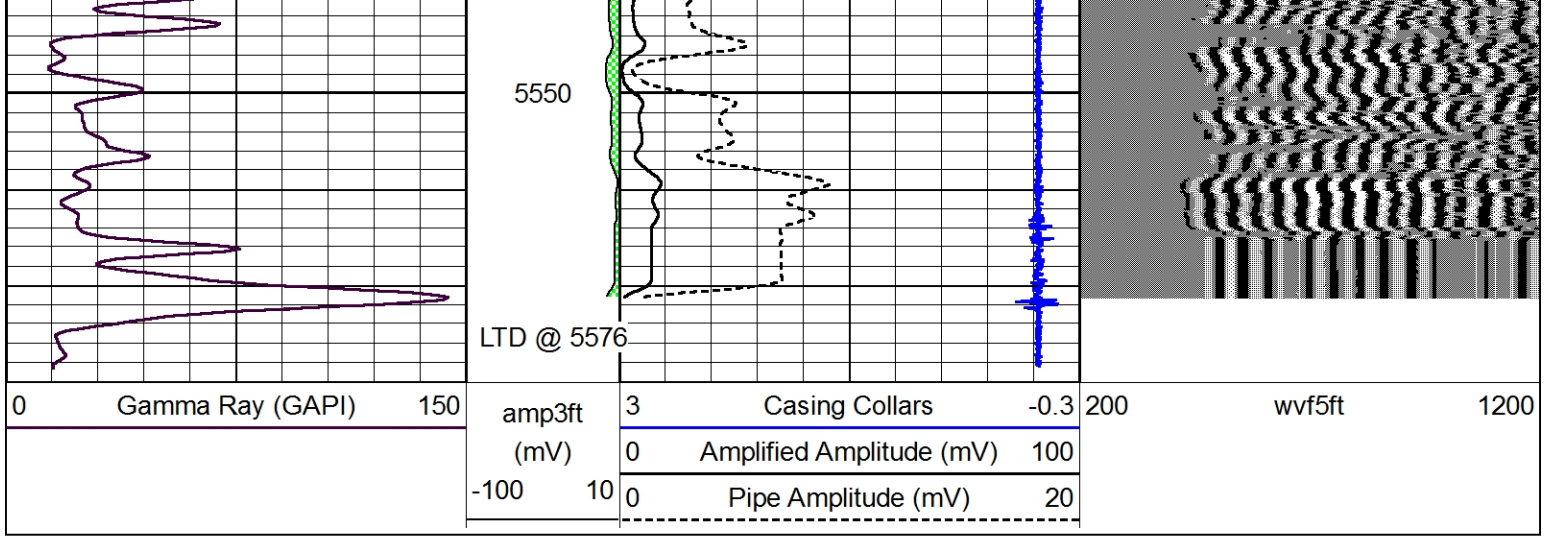












Repeat Section

Database File chieftain_ahs_cattle_company#4.db
 Dataset Pathname grcbl/pass3
 Presentation Format cbldr
 Dataset Creation Tue May 13 08:44:30 2014
 Charted by Depth in Feet scaled 1:240

