



MIDWEST SURVEYS
 LOGGING - PERFORATING - CONSULTING SERVICES
 P.O. Box 68, Osawatomie, KS 66064
 913 / 755 - 2128

GAMMA RAY / NEUTRON / CCL

API# 15-001-31,086

File No.

Company **Haas Petroleum, LLC.**

Well **Miewes No. 4-HP**

Field **Iola**

County **Allen** State **Kansas**

Location

825' FNL & 1820' FEL
 NW-SE-NW-NE

Sec. 8 Twp. 24S Rge. 19E

Permanent Datum GL Elevation 1075'

Log Measured From GL

Drilling Measured From GL

Other Services

Perforate

Elevation

K.B. NA
 D.F. NA
 G.L. 1075'

Date 07-02-2014

Run Number One

Depth Driller 1030.0

Depth Logger 1025.7

Bottom Logged Interval 1024.7

Top Log Interval 20.0

Fluid Level Full

Type Fluid Water

Density / Viscosity NA

Salinity - PPM Cl NA

Max Recorded Temp NA

Estimated Cement Top 0.0

Equipment No. Location 102 Osawatomie

Recorded By Gary Windisch

Witnessed By John Haas

RUN BORE-HOLE RECORD

CASING RECORD

No.	BIT	FROM		SIZE	WGT. #	FROM		TO
		TO	FROM			FROM	TO	
One	12.25"	0.0	20.0	8.625"	24.0 #	0.0	20.0	
Two	6.75"	20.0	1030.0	4.50"	10.5 #	0.0	1026.15	

<<< Fold Here >>>

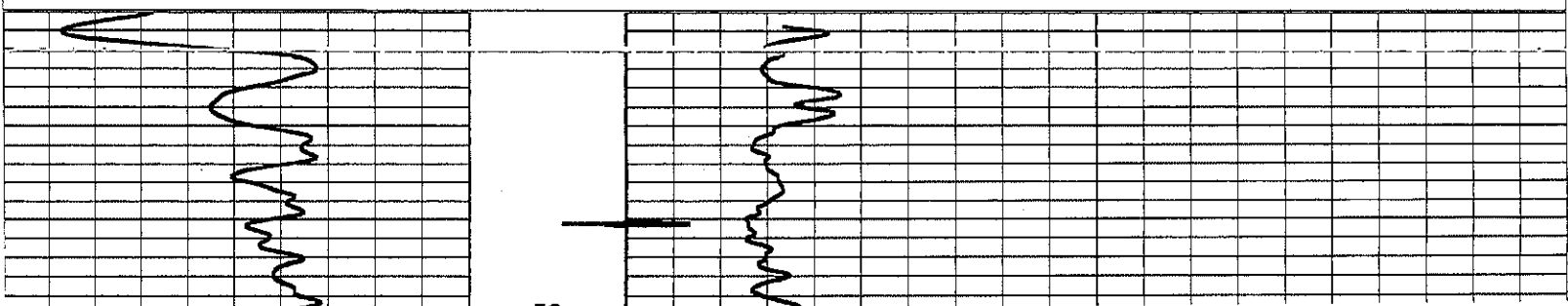
All interpretations are opinions based on inferences from electrical or other measurements and we cannot and do not guarantee the accuracy or correctness of any interpretation, and we shall not, except in the case of gross or willful negligence on our part, be liable or responsible for any loss, costs, damages, or expenses incurred or sustained by anyone resulting from any interpretation made by any of our officers, agents or employees. These interpretations are also subject to our general terms and conditions set out in our current Price Schedule.

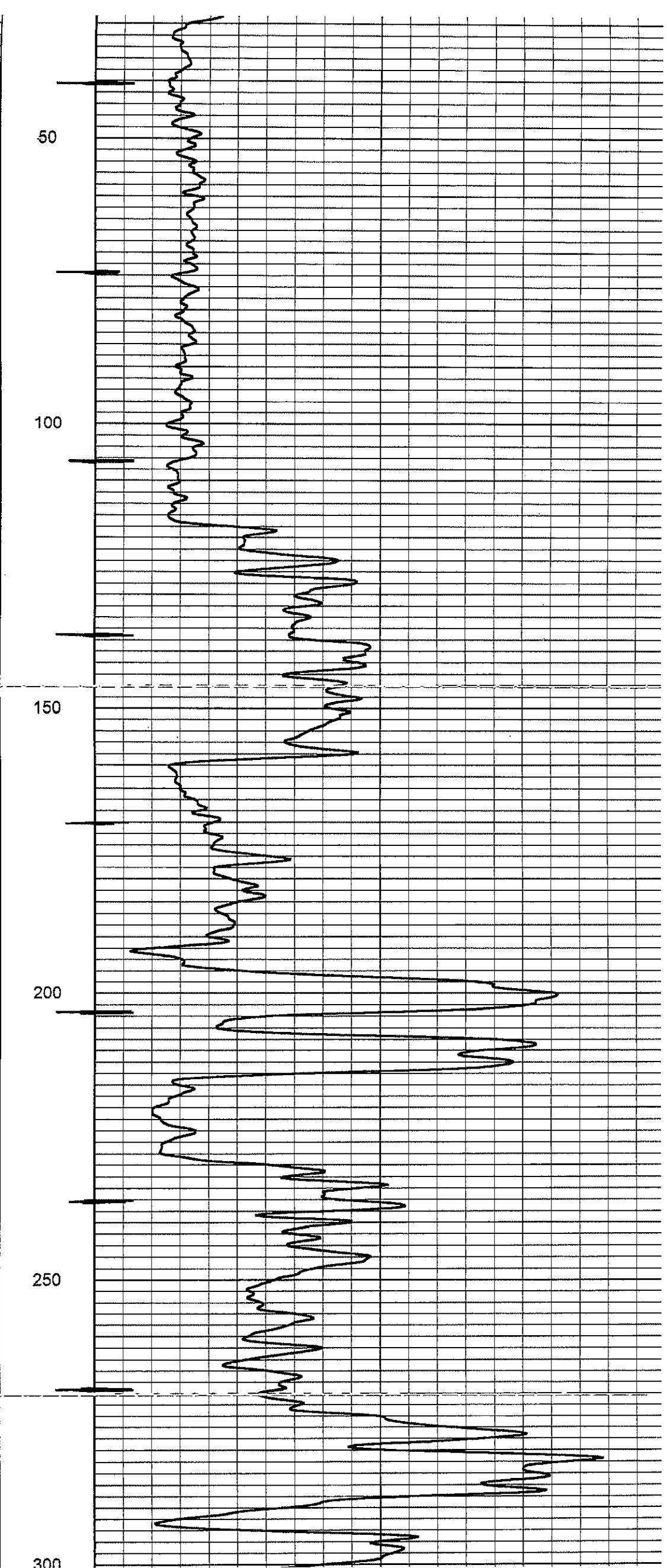
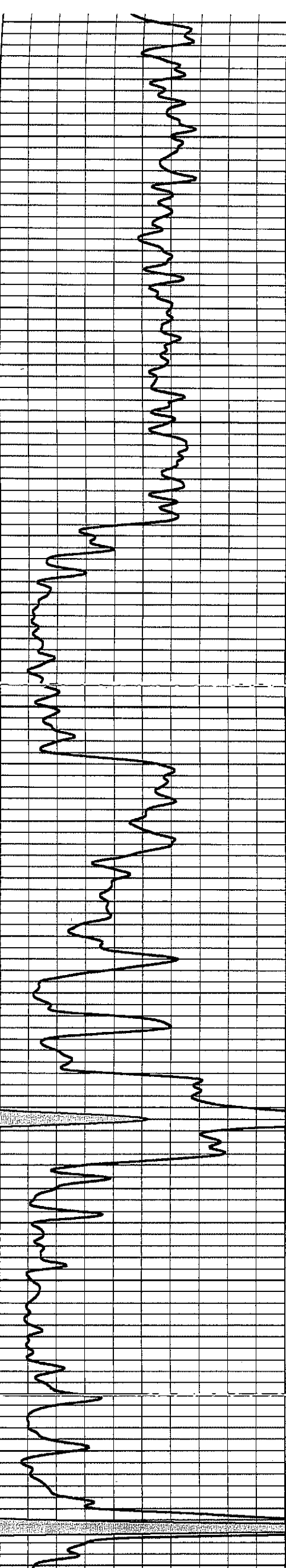
Comments

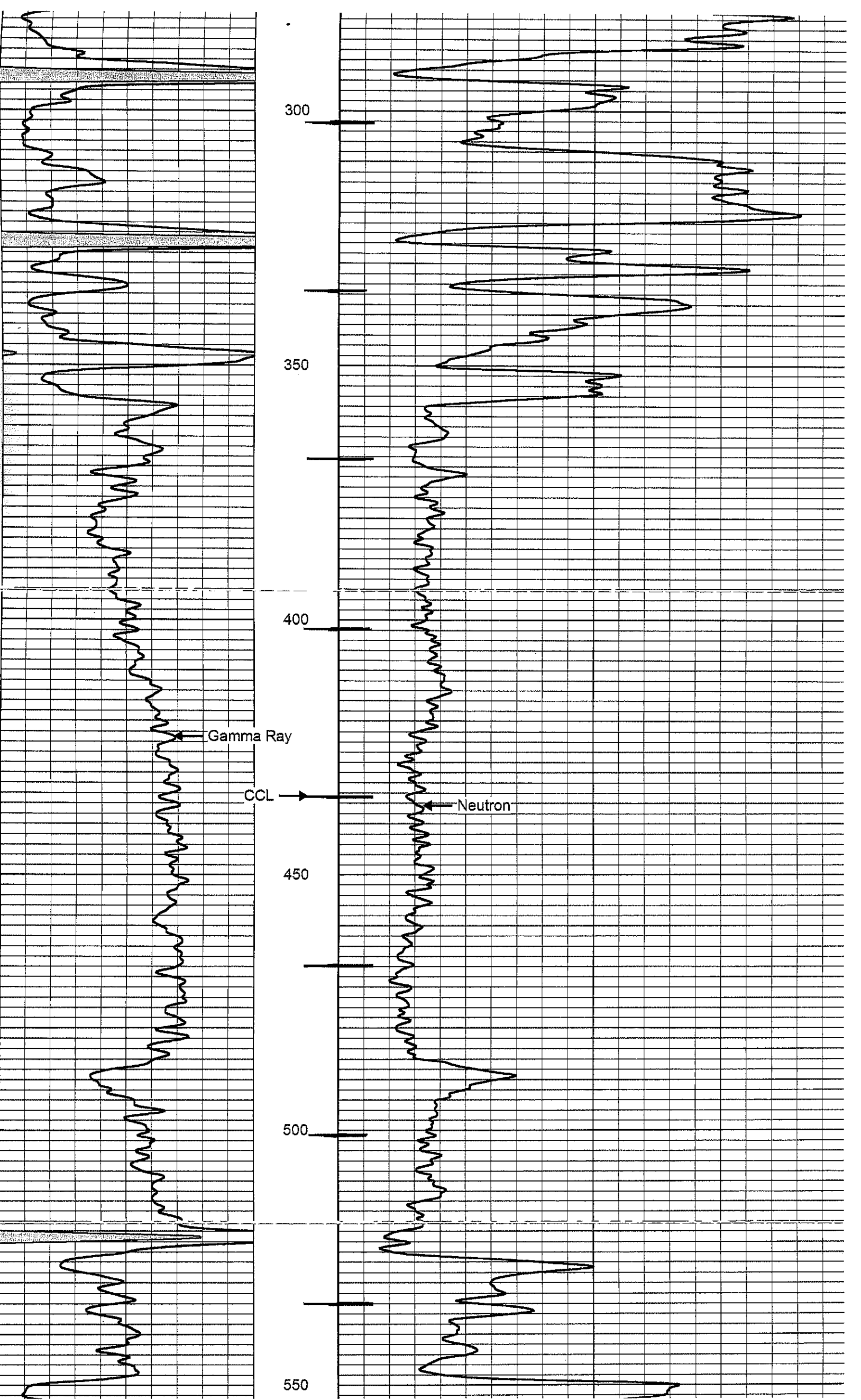
Drilling Contractor :
 Town Oilfield Services, Inc.

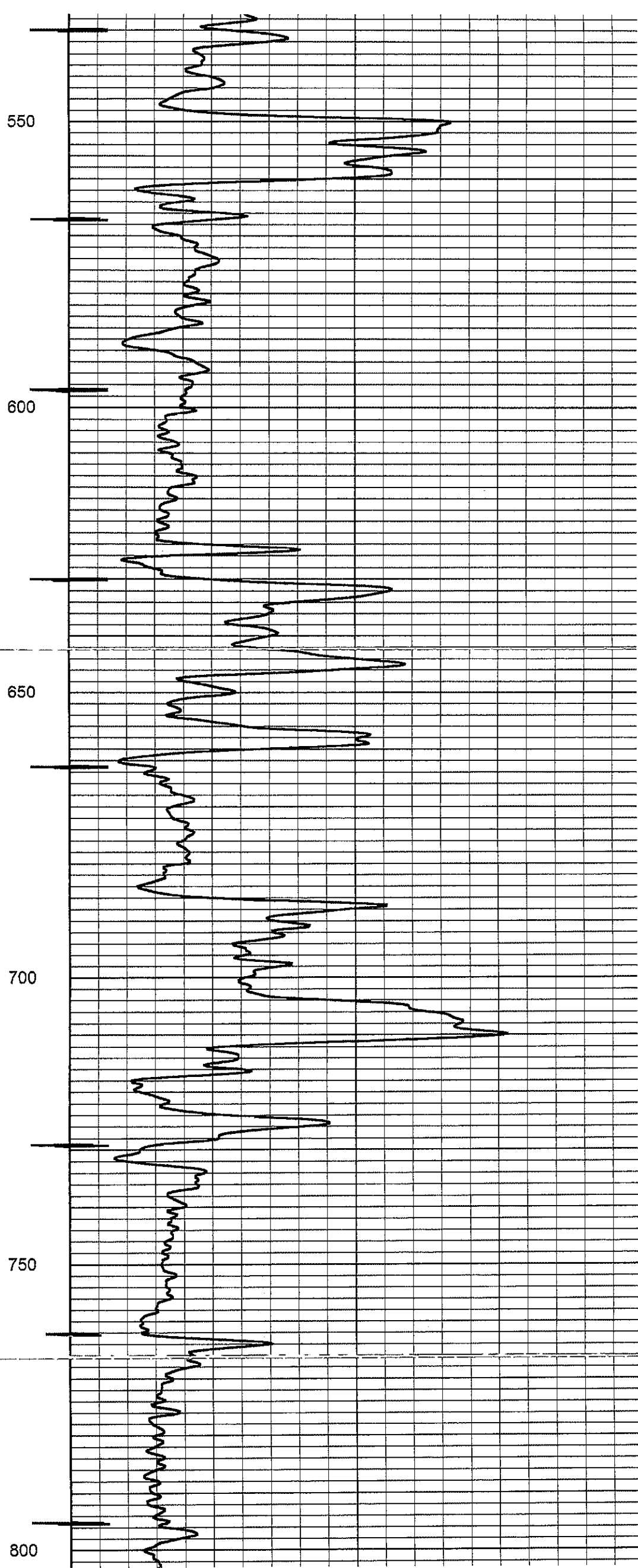
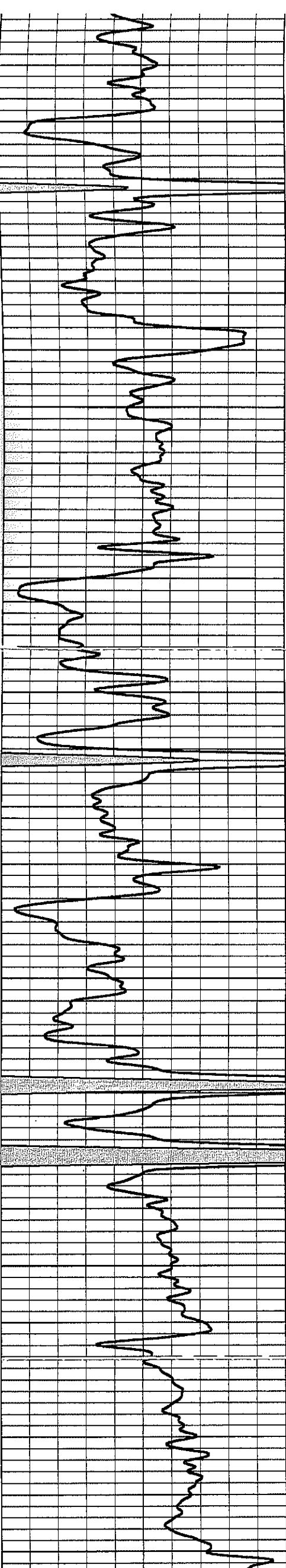
Database File: miewes4hp.db
 Dataset Pathname: pass1
 Presentation Format: gr-n-ccl
 Dataset Creation: Wed Jul 02 10:16:25 2014 by Log SCH 111116
 Charted by: Depth in Feet scaled 1:240

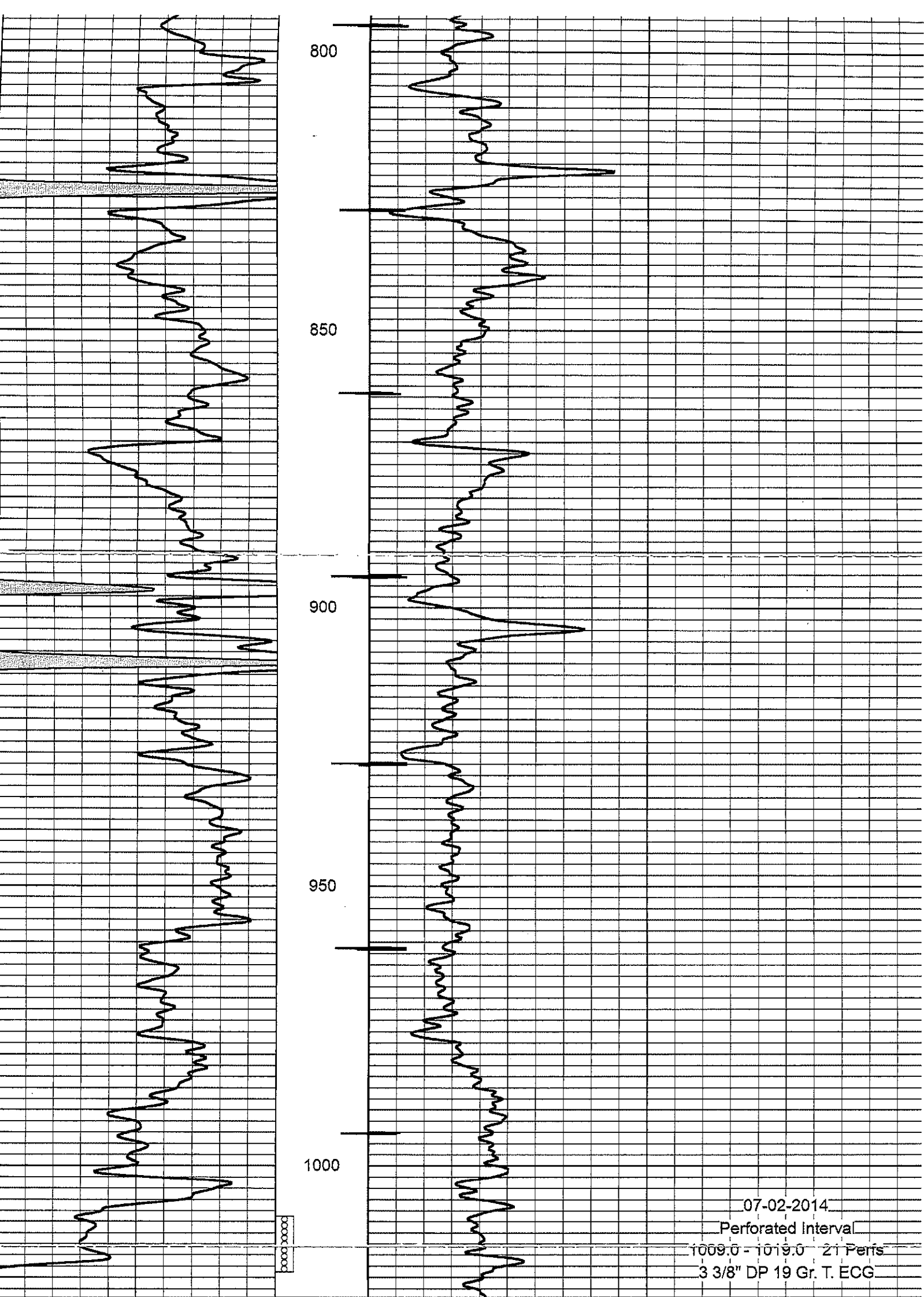
0	Gamma Ray (cps)	150	-1 CCL 1		
150	Gamma Ray (cps)	300	100	Neutron (cps)	1900











0 Gamma Ray (cps) 150
 150 Gamma Ray (cps) 300

-1 CCL 1
 100

Neutron (cps) 1900

07-02-2014
 Perforated Interval
 1009.0 - 1019.0 21 Perfs
 3 3/8" DP 19 Gr. T. ECG