



Pioneer Energy Services

## Dual Compensated Porosity Log

15-113-2,1367-00-00

API No.

Company **Kent Anderson**  
 Well **Nightingale #2**  
 Field **Jenday**  
 County **McPherson**

State **Kansas**

Location **1,650' FSL & 330' FEL**

Other Services  
DIL

Sec: **1** Twp: **19S** Rge: **2W**

Permanent Datum **Ground Level** Elevation **1595**  
 Log Measured From **Kelly Bushing** **5** Ft. Above Perm. Datum  
 Drilling Measured From **Kelly Bushing**

Elevation  
K.B. **1600**  
D.F. **1595**  
G.L. **1595**

Date	7/7/2014	
Run Number	One	
Type Log	CNL / CDL	
Depth Driller	3050	
Depth Logger	3049	
Bottom Logged Interval	3028	
Top Logged Interval	1300	
Type Fluid In Hole	Chemical	
Salinity, PPM CL	2200	
Density Level	9.1	
Max. Rec. Temp. F	Full	
Operating Rig Time	107	
Equipment -- Location	2 Hours	
Recorded By	J. Long	Hays
Witnessed By	David Gould	D. Fischer

**Borehole Record**

**Casing Record**

Run No.	Bit	From	To	Size	Wgt. 24#	From	To
1	12.25	00	209	8.625		00	209
2	7.875	209	3050				

<<< Fold Here >>>

All interpretations are opinions based on inferences from electrical or other measurements and we cannot and do not guarantee the accuracy or correctness of any interpretation, and we shall not, except in the case of gross or willful negligence on our part, be liable or responsible for any loss, costs, damages, or expenses incurred or sustained by anyone resulting from any interpretation made by any of our officers, agents or employees. These interpretations are also subject to our general terms and conditions set out in our current Price Schedule.

**Comments**

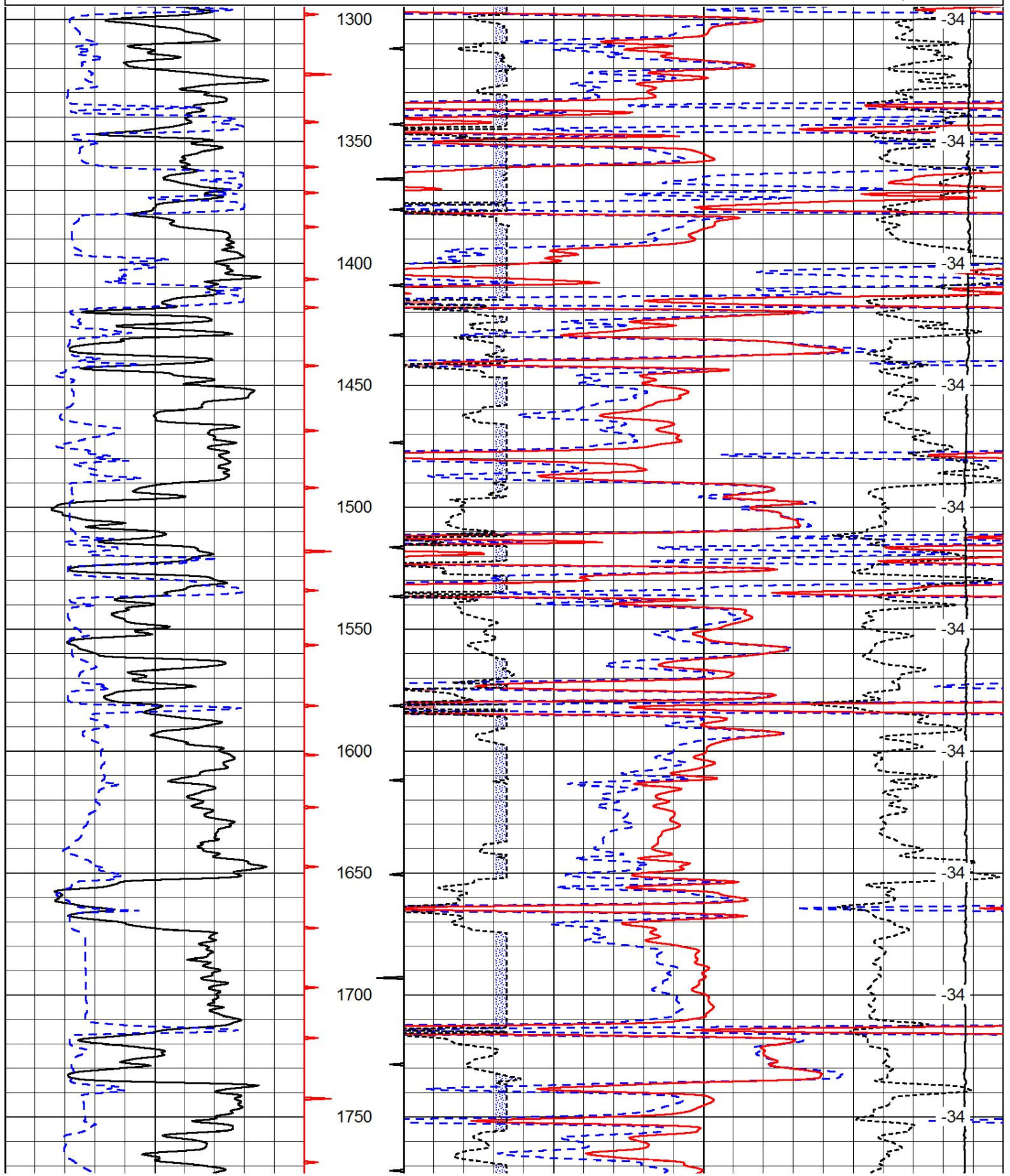
Thank you for using Pioneer Energy Services  
[www.pioneerenergy.com](http://www.pioneerenergy.com)  
 785 625 3858

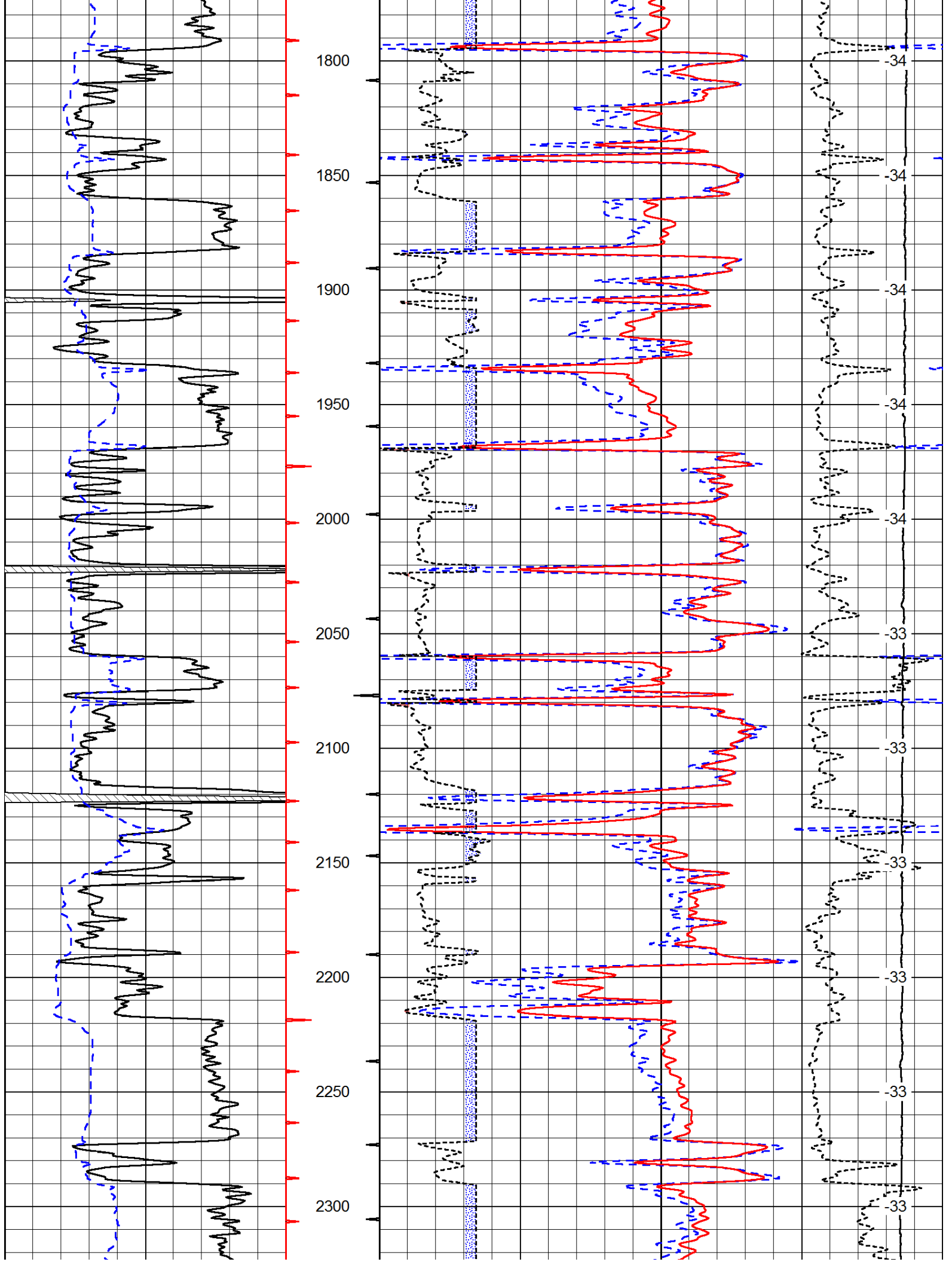
Galva Ks., 3 East to 24th Rd., 3 1/2 North, West Into.

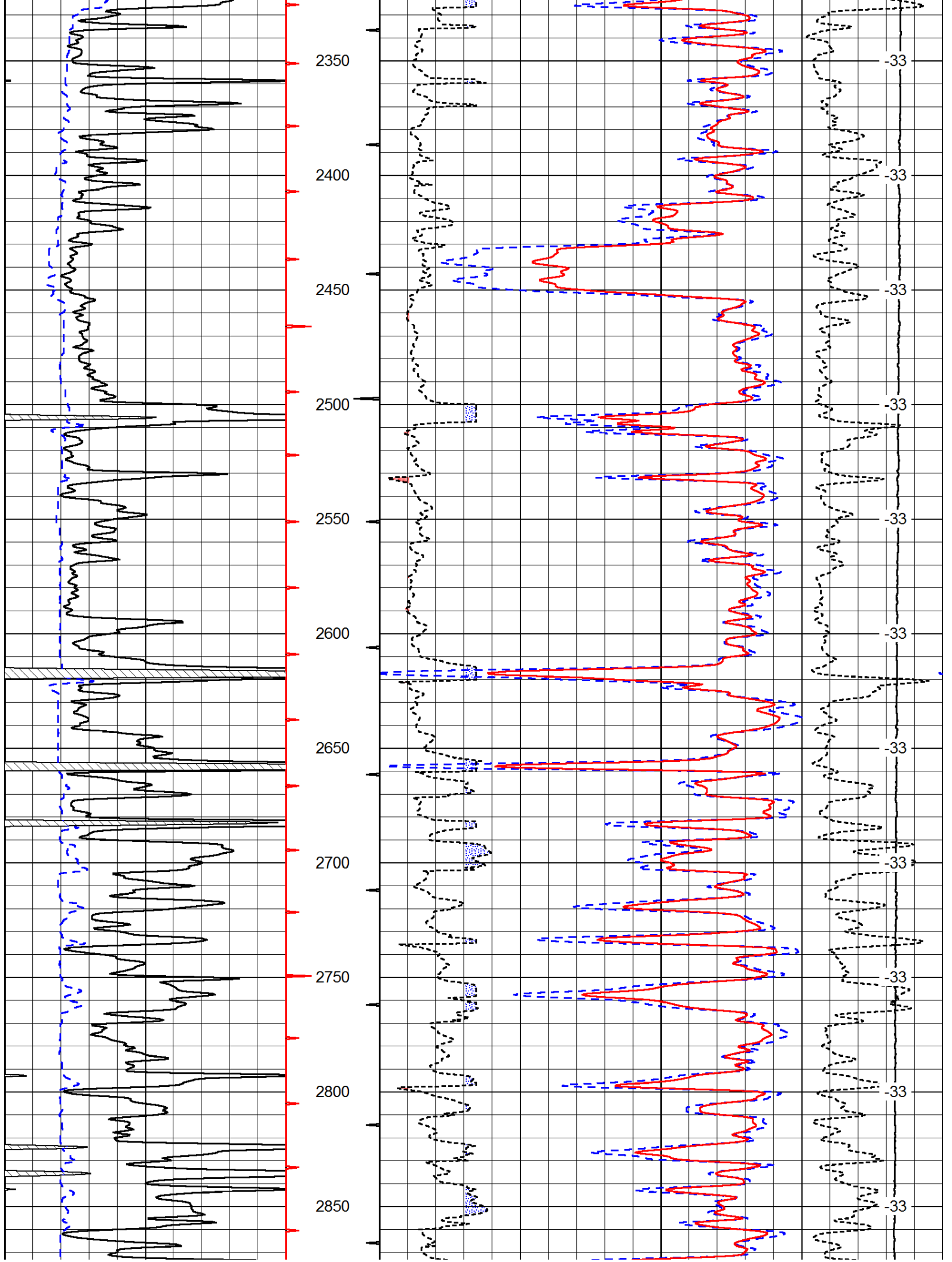
Database File: c:\warrior\data\kent anderson\_nightingale #2\anderson\_kent\_nightengale\_2hd.db  
 Dataset Pathname: DIL\andstck  
 Presentation Format: cdl  
 Dataset Creation: Mon Jul 07 16:58:18 2014  
 Charted by: Depth in Feet scaled 1:600

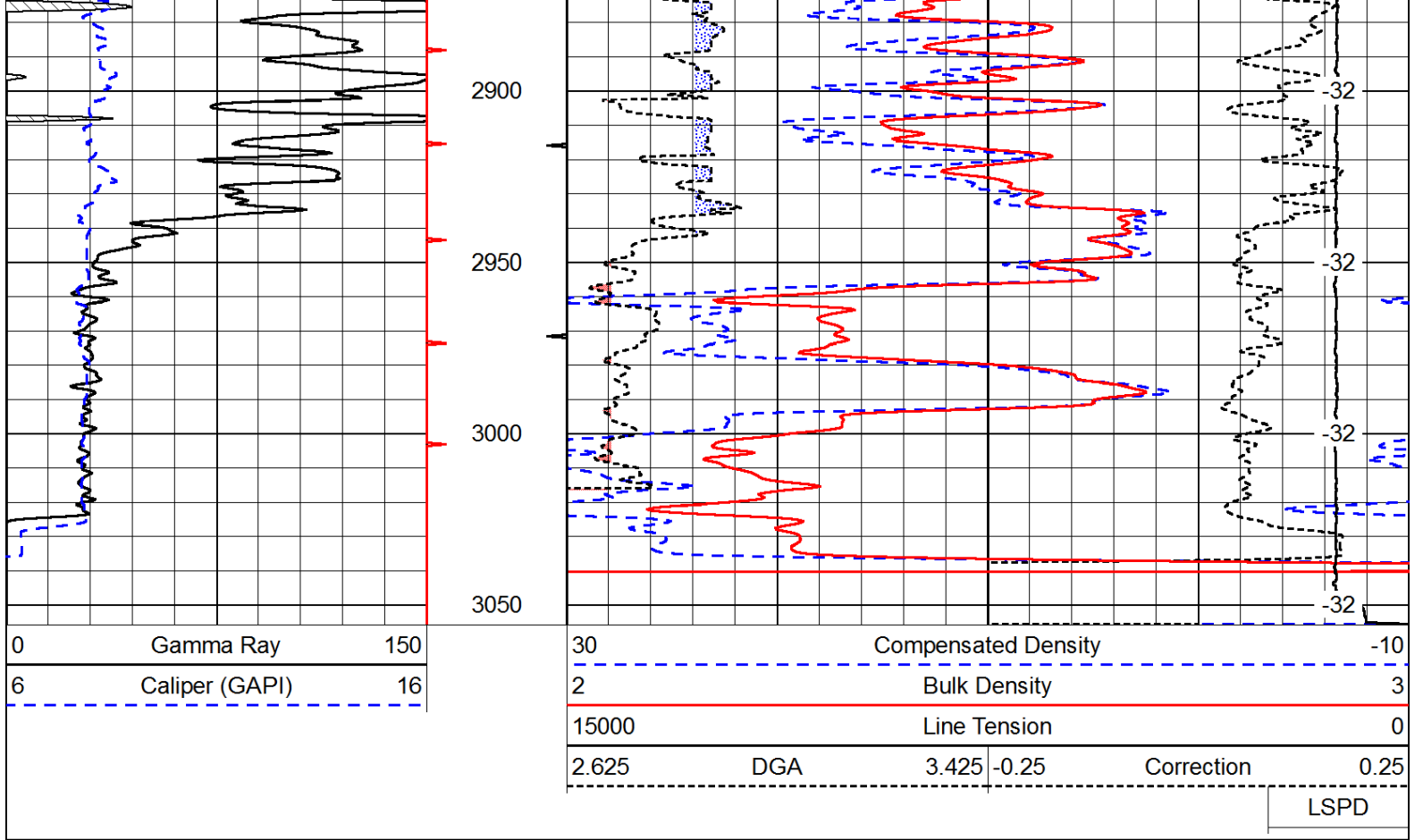
0	Gamma Ray	150
6	Caliper (GAPI)	16

30	Compensated Density		-10
2	Bulk Density		3
15000	Line Tension		0
2.625	DGA	3.425	-0.25
			Correction
			0.25
LSPD			

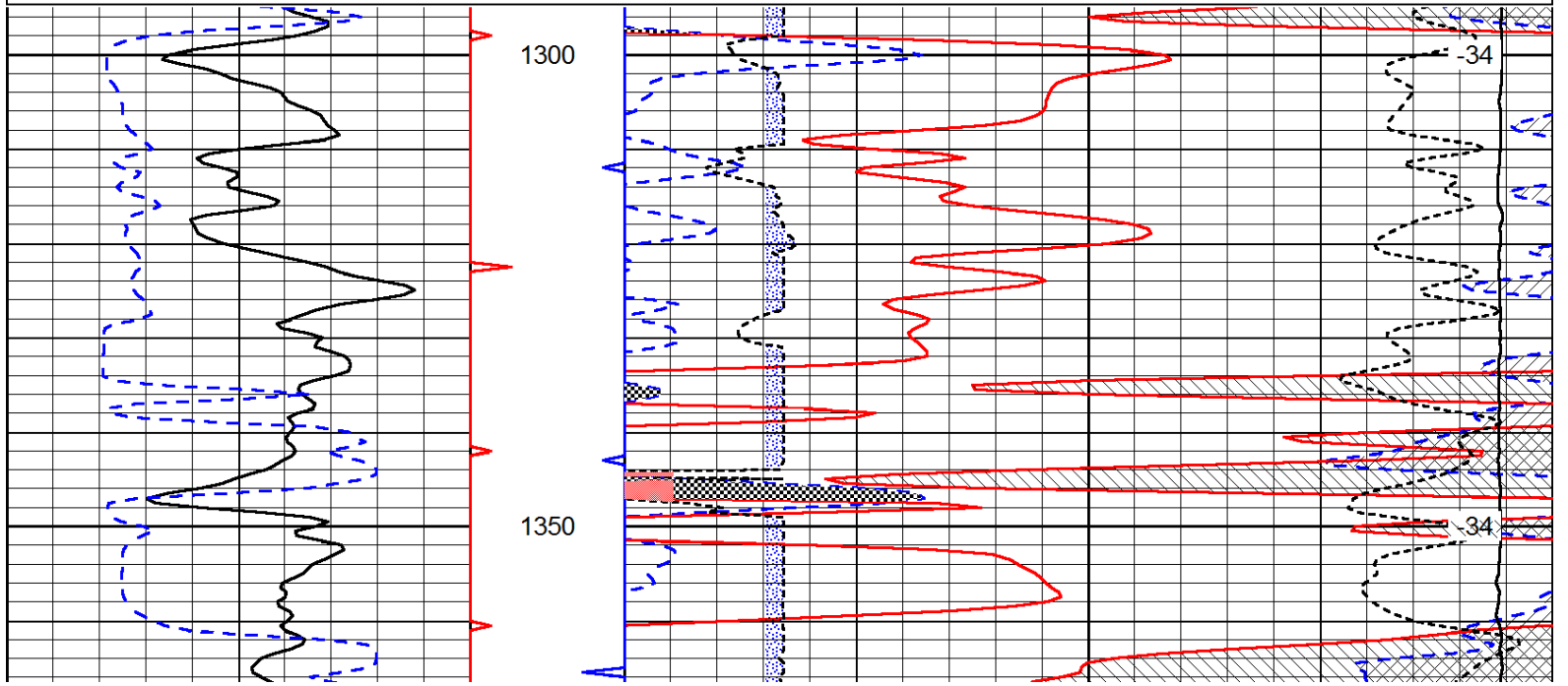
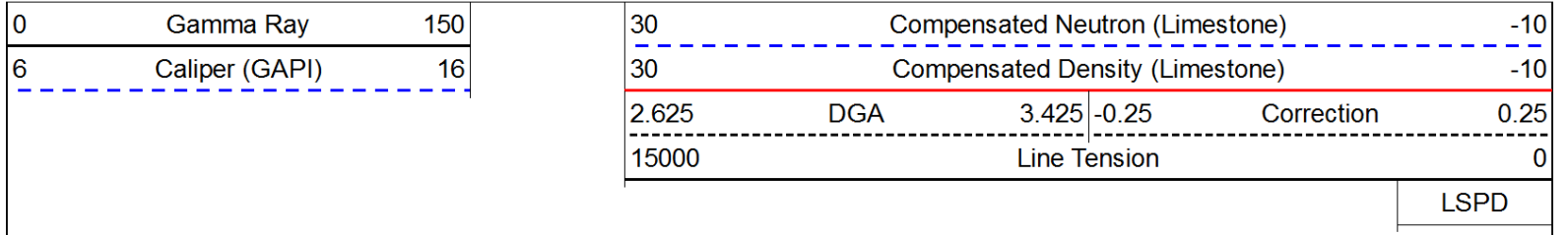


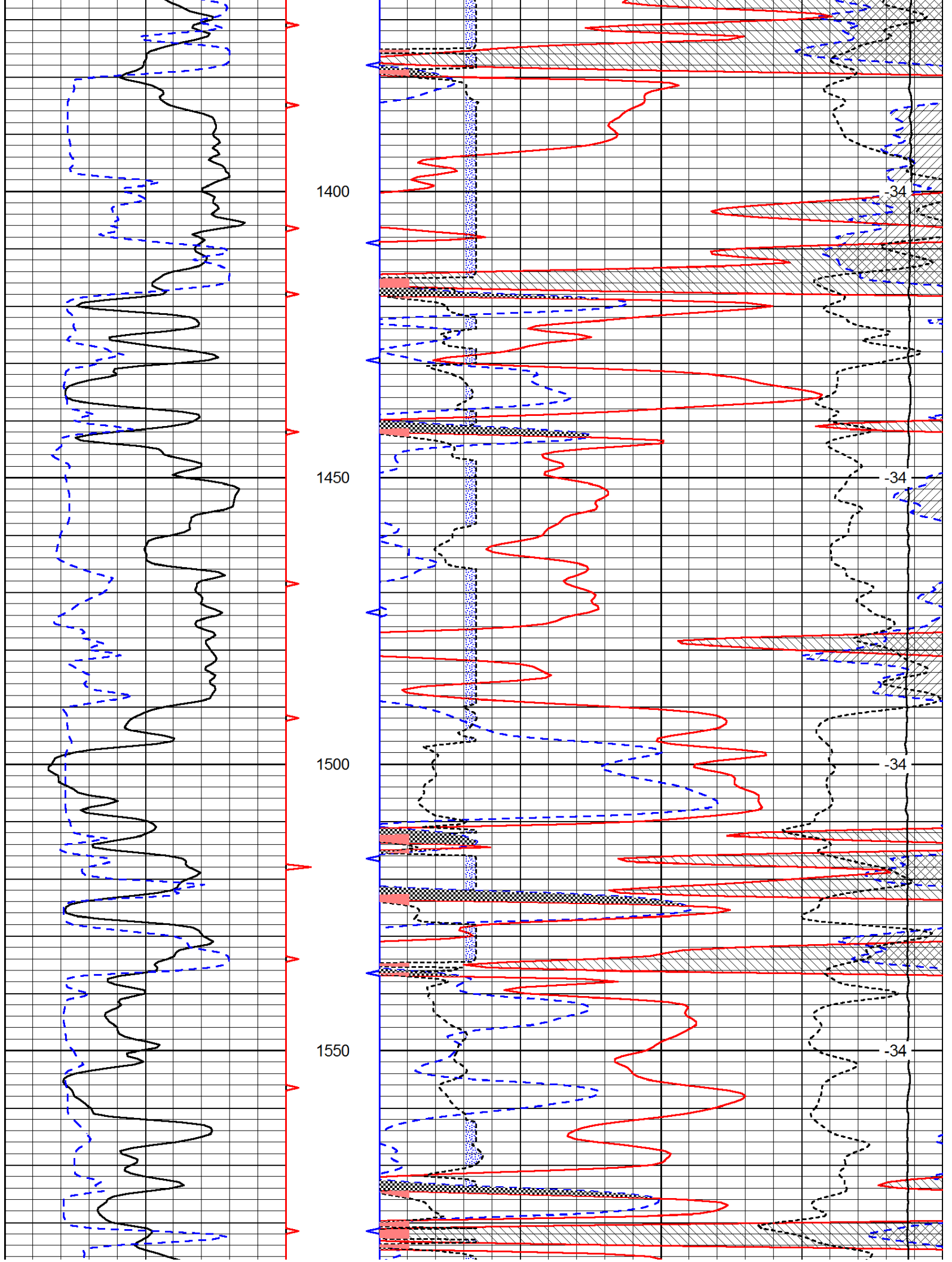


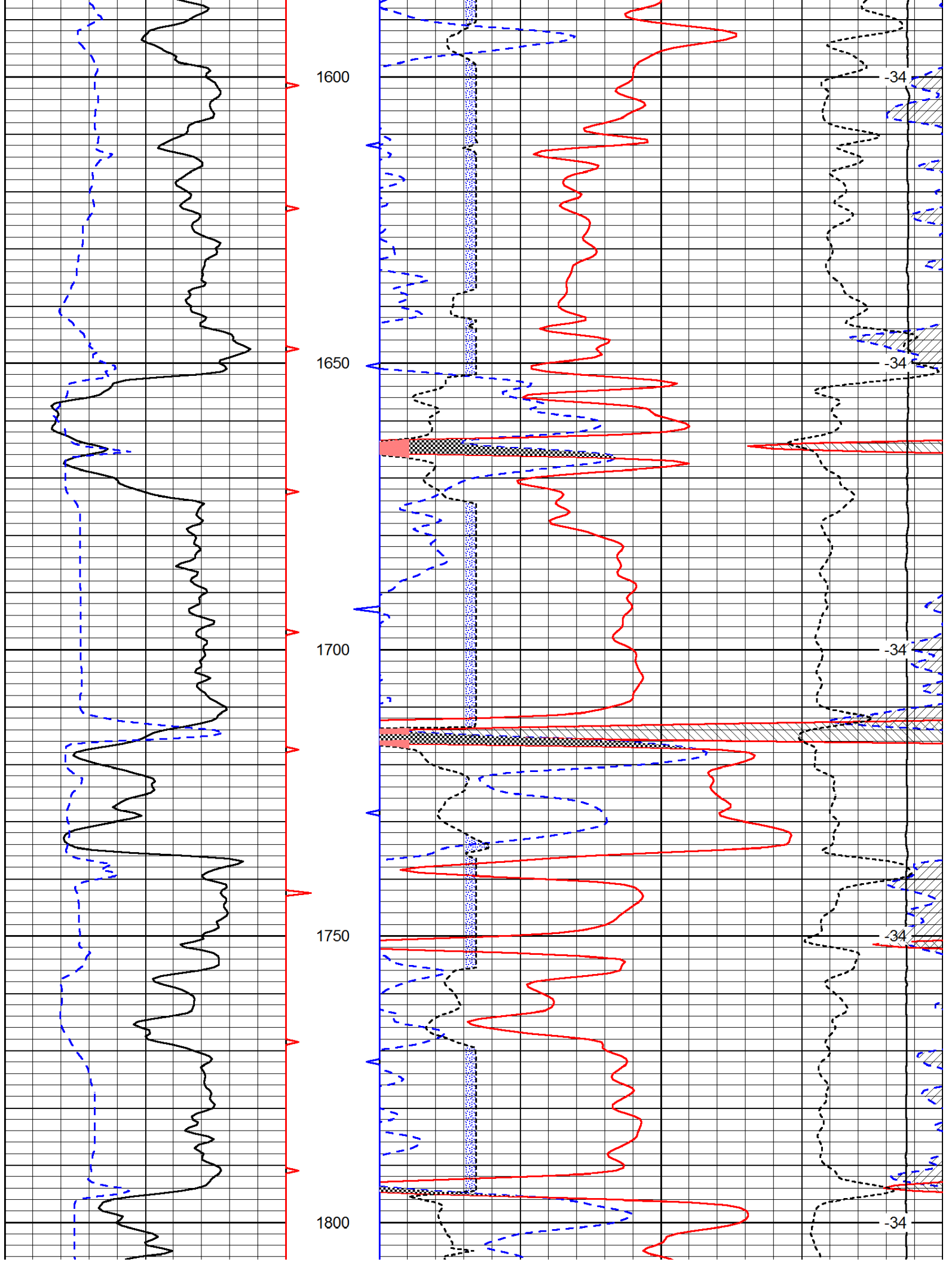


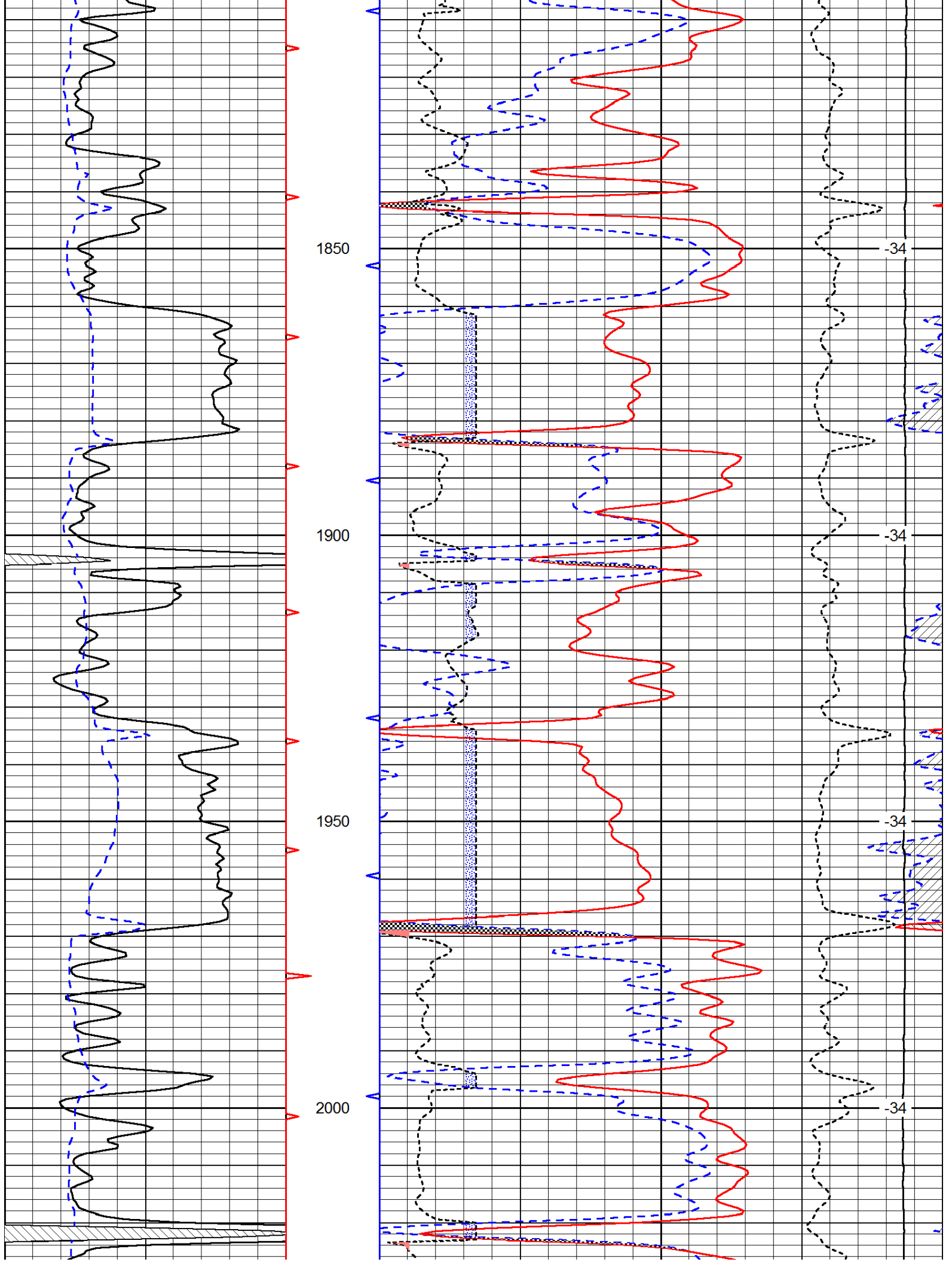


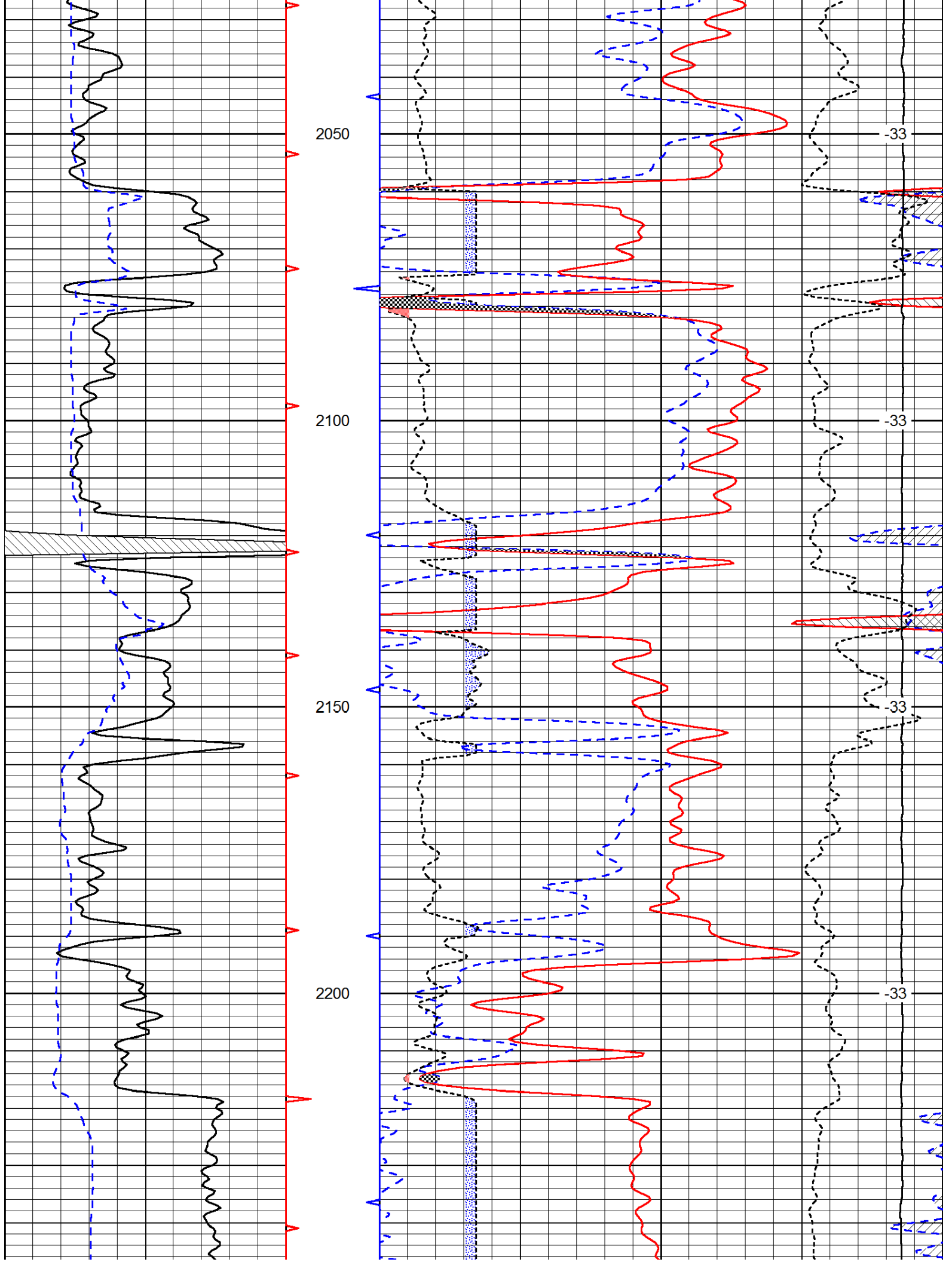
Database File: c:\warrior\data\kent anderson\_nightingale #2\anderson\_kent\_nightengale\_2hd.db  
 Dataset Pathname: DIL/andstck  
 Presentation Format: cndlspec  
 Dataset Creation: Mon Jul 07 16:58:18 2014  
 Charted by: Depth in Feet scaled 1:240

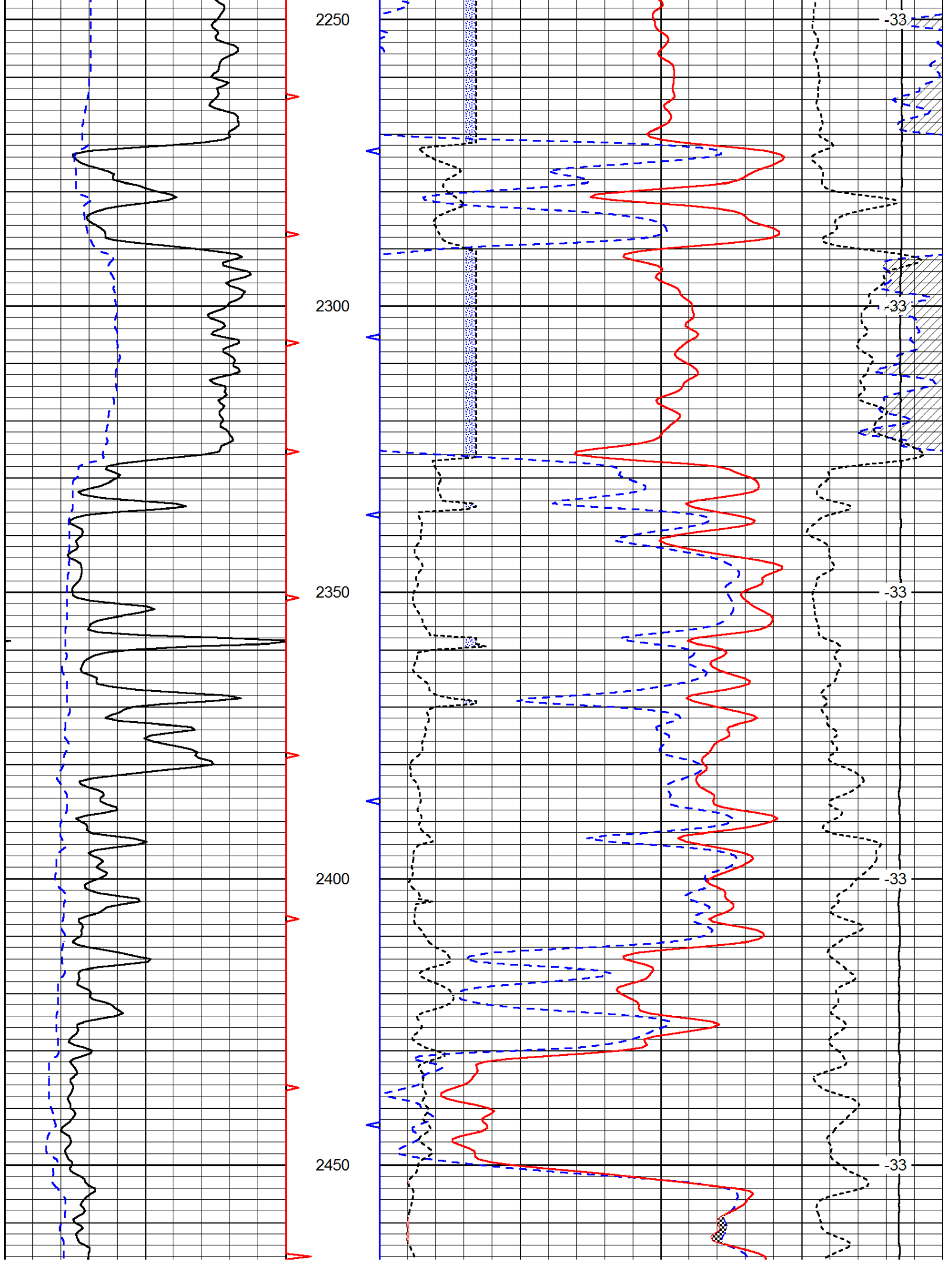


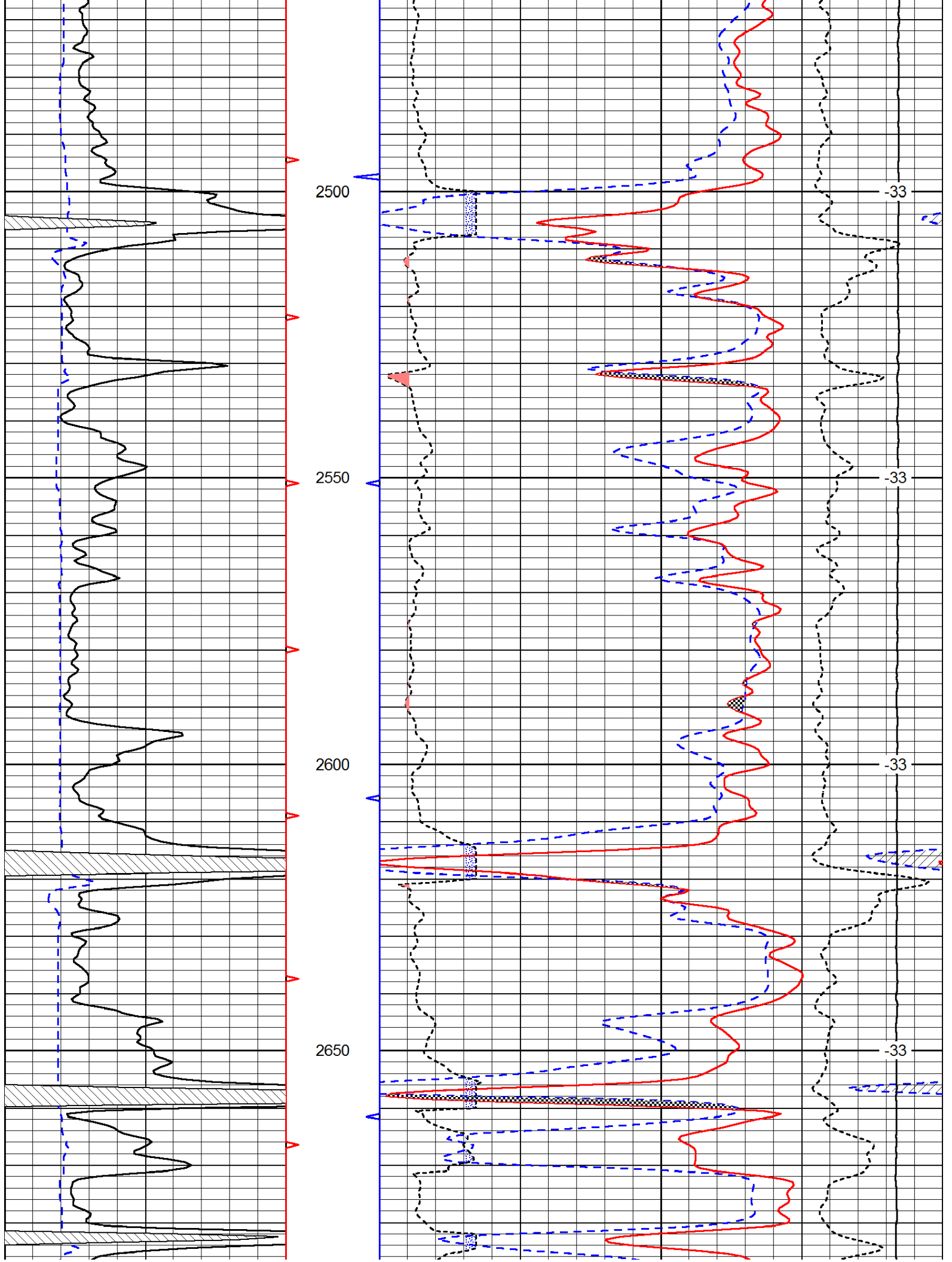


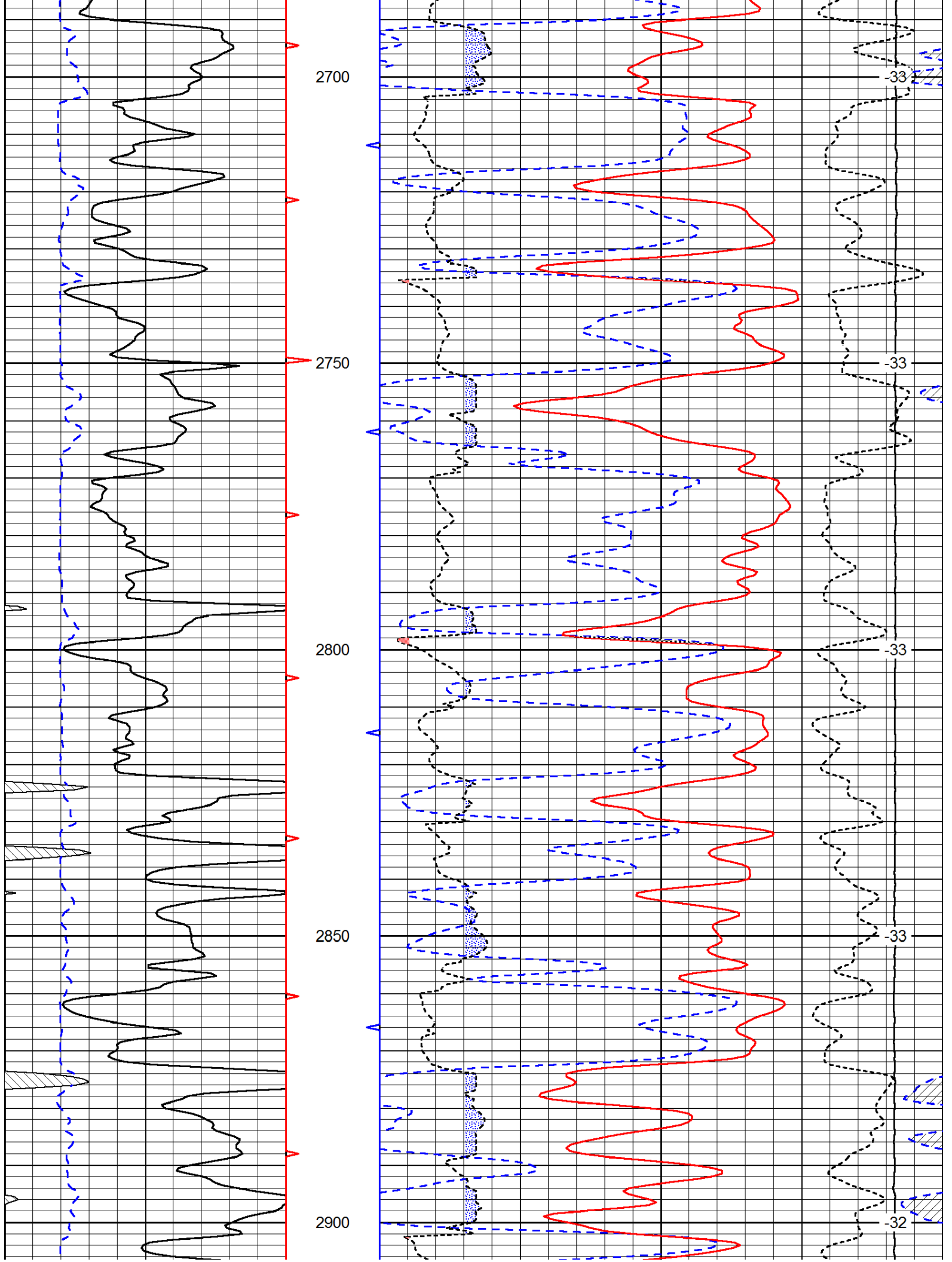


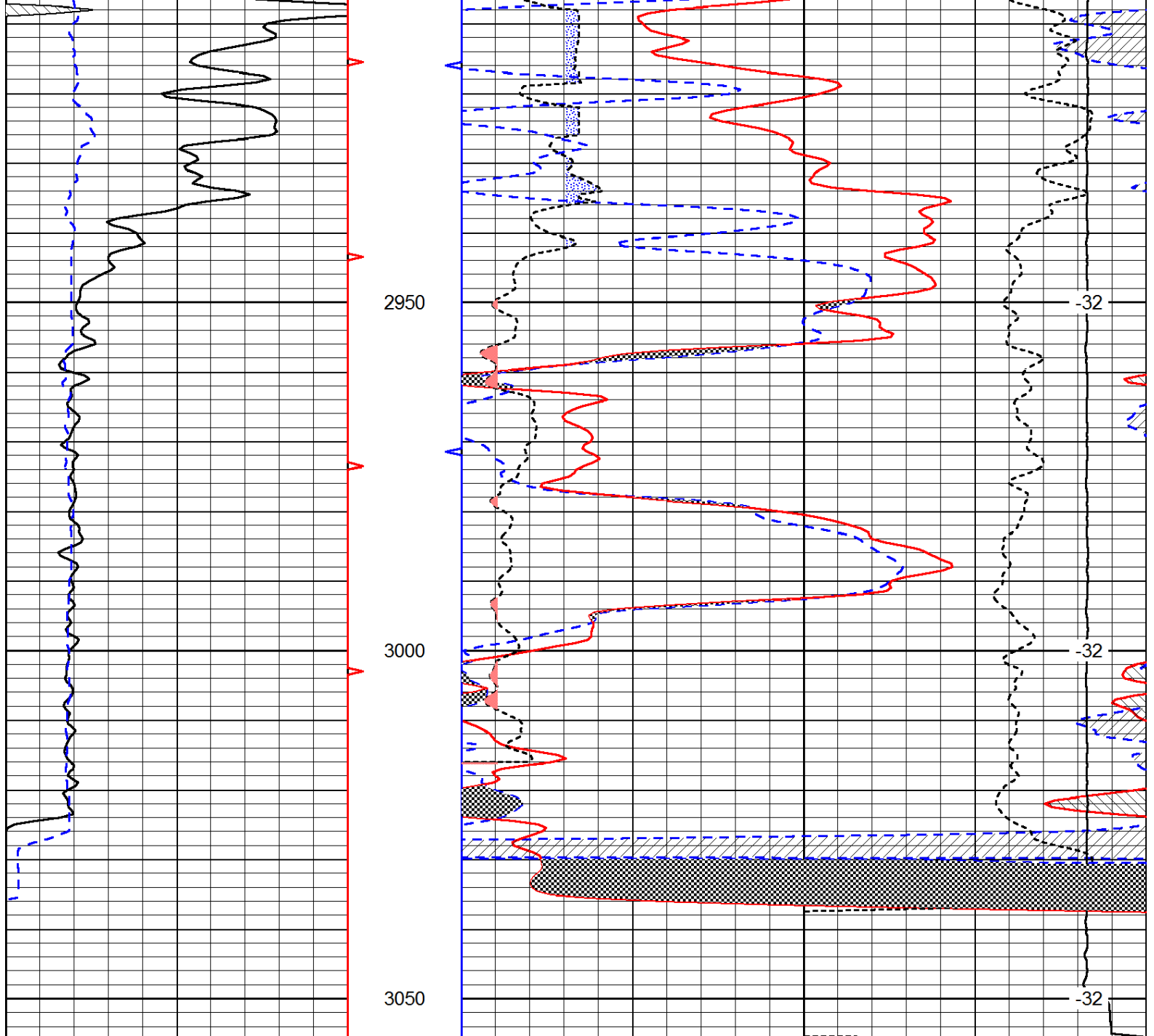












0	Gamma Ray	150
6	Caliper (GAPI)	16

30	Compensated Neutron (Limestone)			-10	
30	Compensated Density (Limestone)			-10	
2.625	DGA	3.425	-0.25	Correction	0.25
15000	Line Tension			0	

LSPD