



Pioneer Energy Services

# Dual Induction Log

15-113-2,1367-00-00

API No.

Company **Kent Anderson**

Well **Nightingale #2**

Field **Jenday**

County **McPherson State**

**Kansas**

Location **1,650' FSL & 330' FEL**

Other Services  
CNL/CDL

Sec: **1** Twp: **19S** Rge: **2W**

Permanent Datum **Ground Level** Elevation **1595**

Log Measured From **Kelly Bushing** **5** Ft. Above Perm. Datum

Elevation  
K.B. 1600  
D.F. 1595  
G.L. 1595

Date **7/7/2014**

Run Number **One**

Depth Driller **3050**

Depth Logger **3049**

Bottom Logged Interval **3048**

Top Log Interval **200**

Casing Driller **8.625 @ 209**

Casing Logger **208**

Bit Size **7.875**

Type Fluid in Hole **Chemical**

Salinity,ppm CL **2200**

Density / Viscosity **9.1 50**

pH / Fluid Loss **11.0 8.4**

Source of Sample **Flowline**

Rm @ Meas. Temp **.60 @ 84**

Rmf @ Meas. Temp **.45 @ 84**

Rmc @ Meas. Temp **.81 @ 84**

Source of Rmf / Rmc **Charts**

Rm @ BHT **.47 @ 107**

Operating Rig Time **2 Hours**

Max Rec. Temp. F **107**

Equipment Number **108**

Location **Hays**

Recorded By **J. Long**

Witnessed By **David Gould**

Recorded By **D. Fischer**

<<< Fold Here >>>

All interpretations are opinions based on inferences from electrical or other measurements and we cannot and do not guarantee the accuracy or correctness of any interpretation, and we shall not, except in the case of gross or willful negligence on our part, be liable or responsible for any loss, costs, damages, or expenses incurred or sustained by anyone resulting from any interpretation made by any of our officers, agents or employees. These interpretations are also subject to our general terms and conditions set out in our current Price Schedule.

## Comments

Thank you for using Pioneer Energy Services  
[www.pioneerenergy.com](http://www.pioneerenergy.com)  
 785 625 3858

Galva Ks., 3 East to 24th Rd., 3 1/2 North, West Into.

Database File: c:\warrior\data\kent anderson\_nightingale #2\anderson\_kent\_nightengale\_2hd.db  
 Dataset Pathname: DIL\andstck  
 Presentation Format: dil2in  
 Dataset Creation: Mon Jul 07 16:58:18 2014  
 Charted by: Depth in Feet scaled 1:600

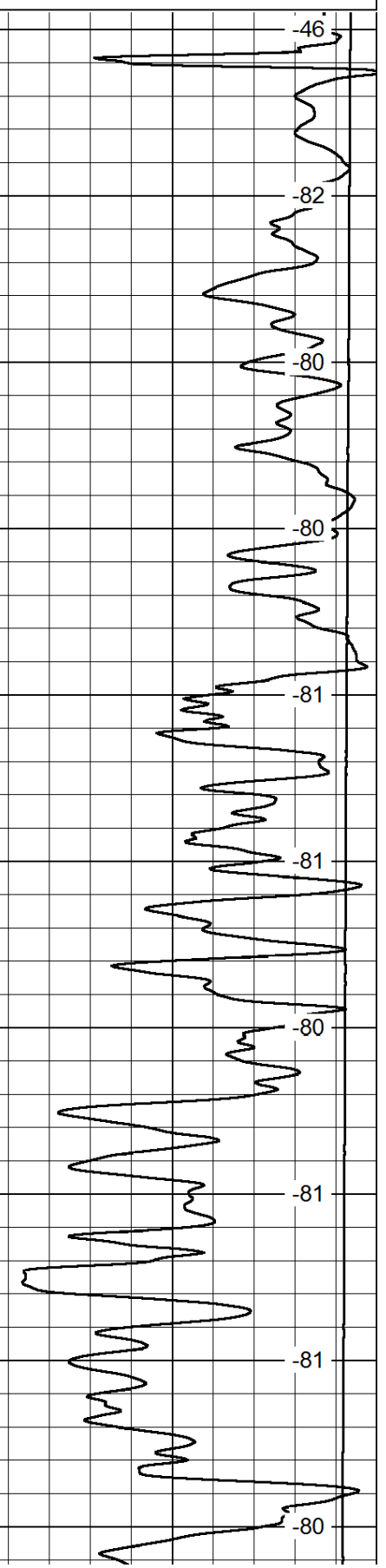
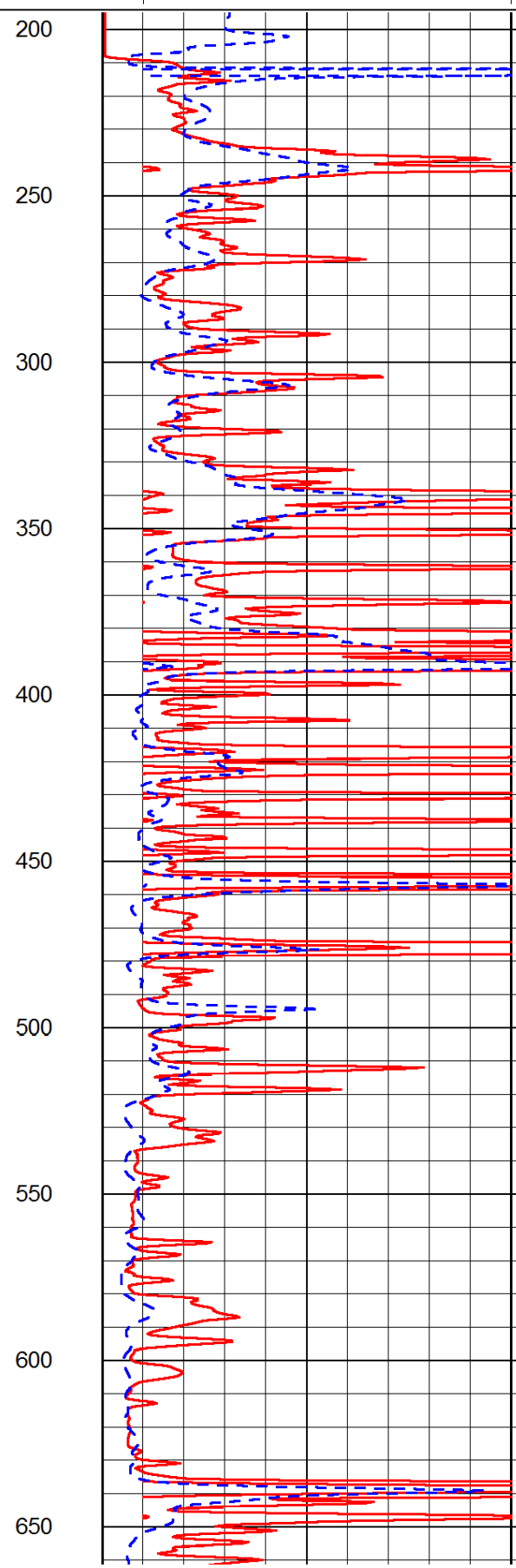
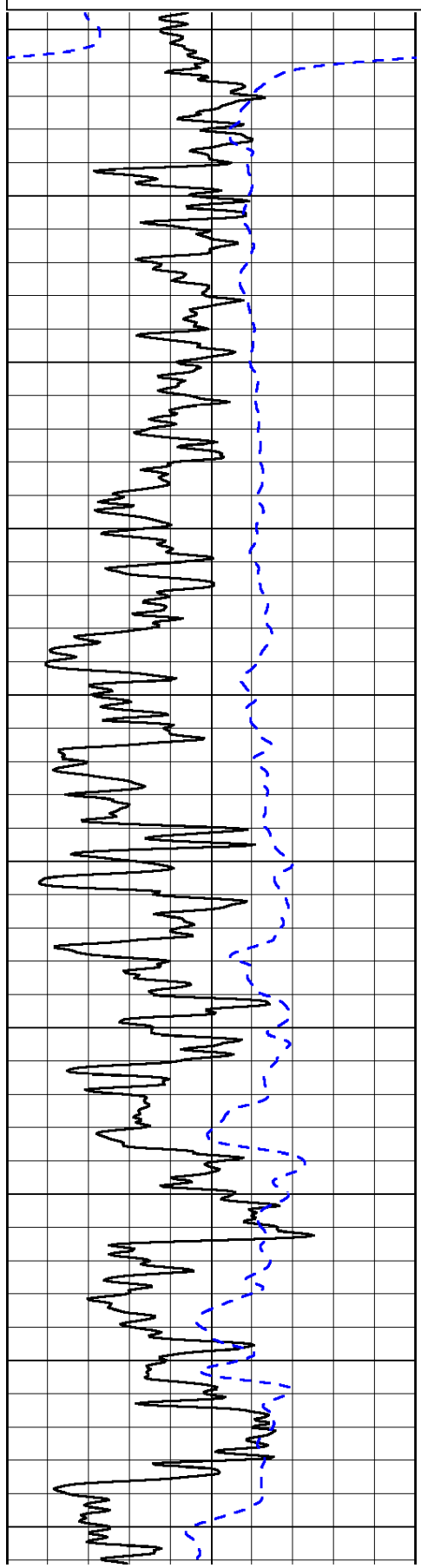
0	Gamma Ray	150
-200	SP (mV)	0

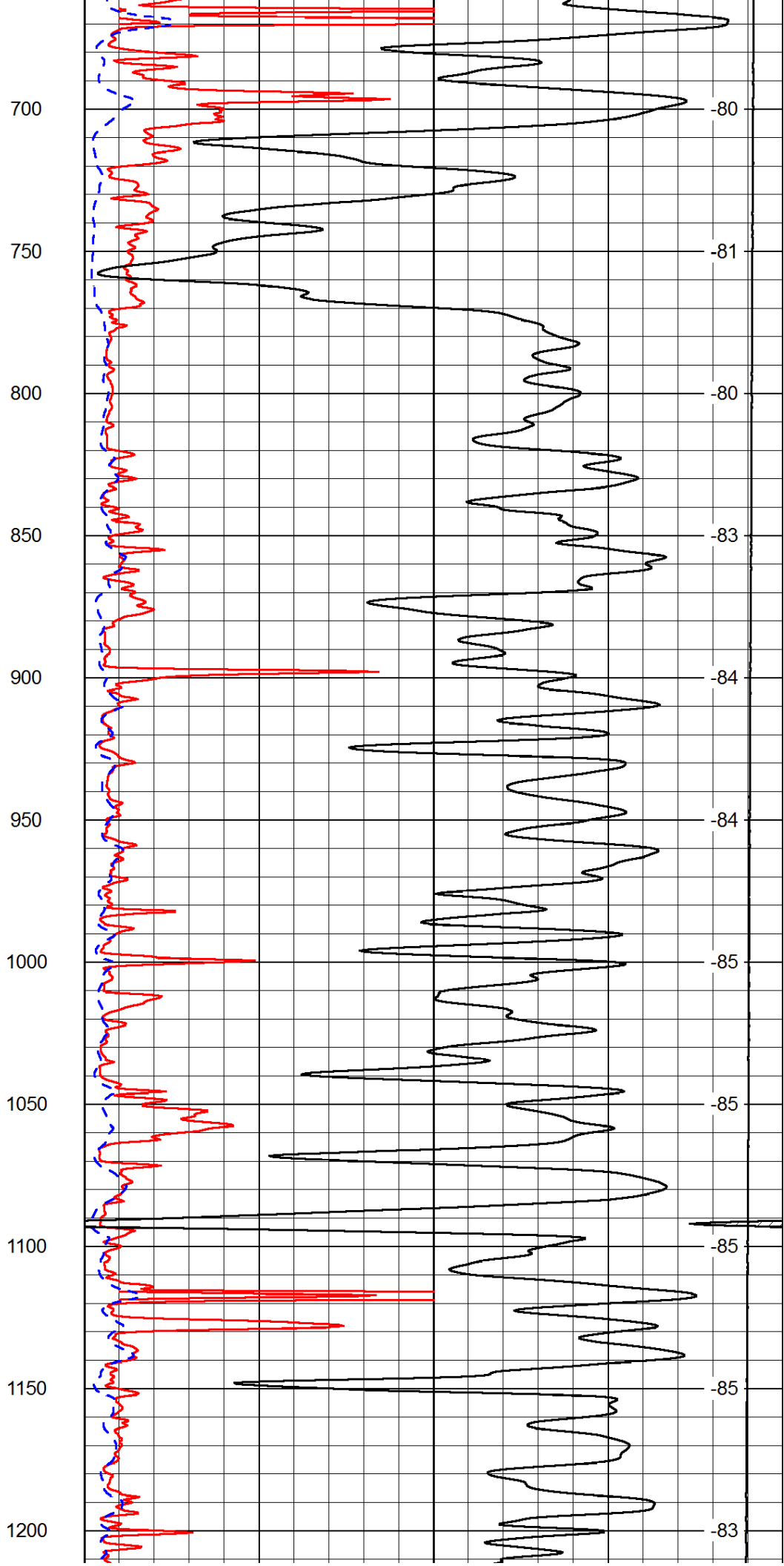
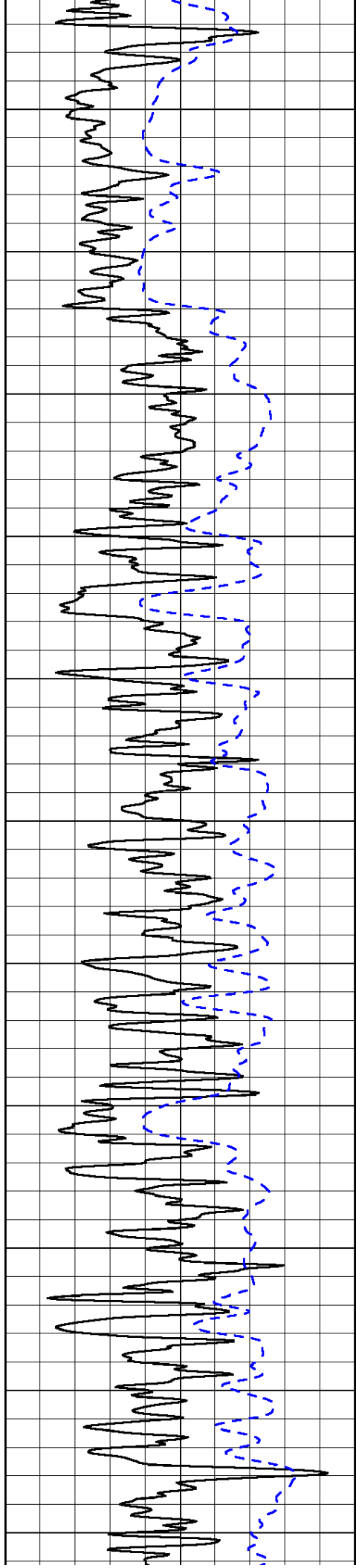
0	Shallow Resistivity	50
0	Deep Resistivity	50

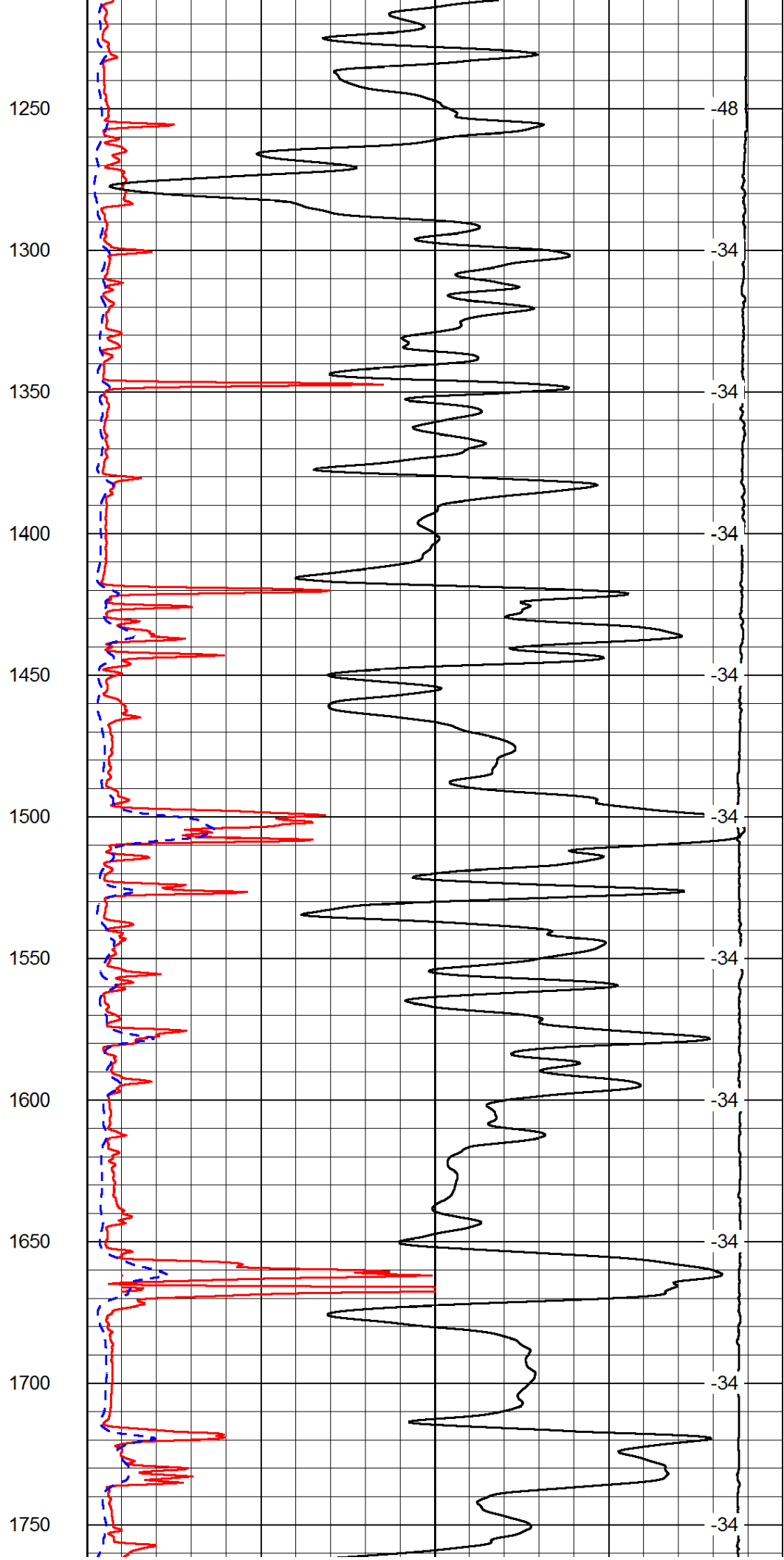
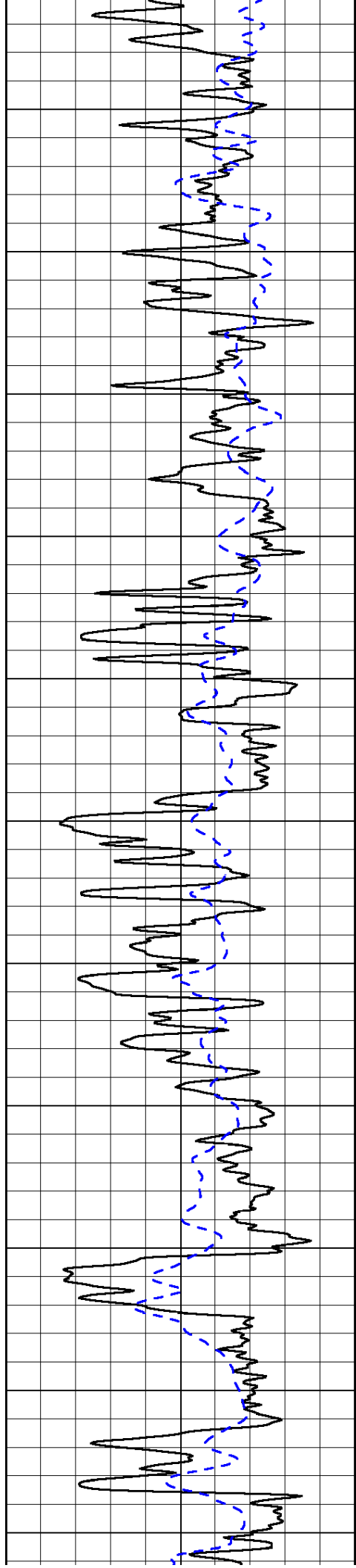
LSPD

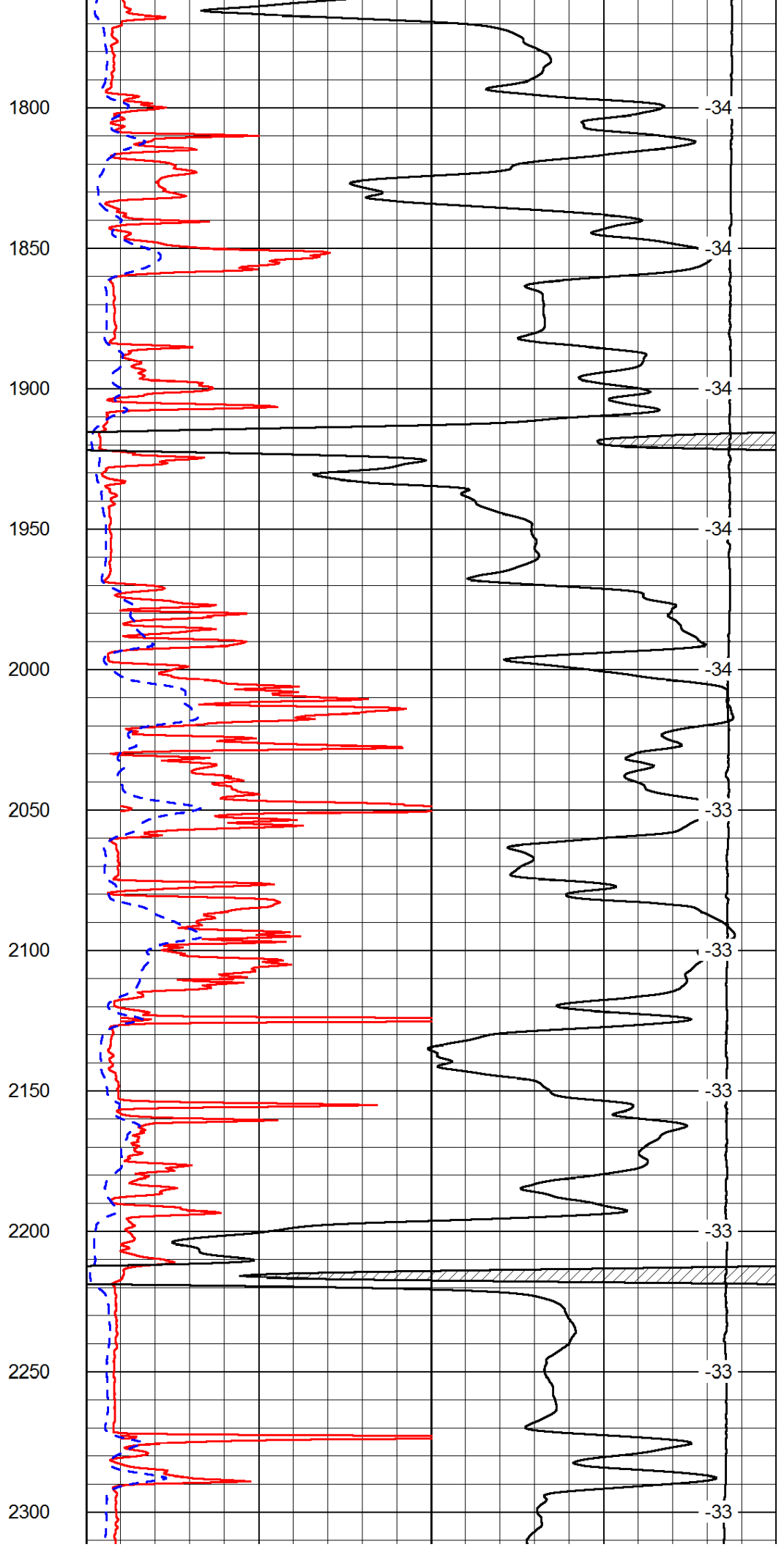
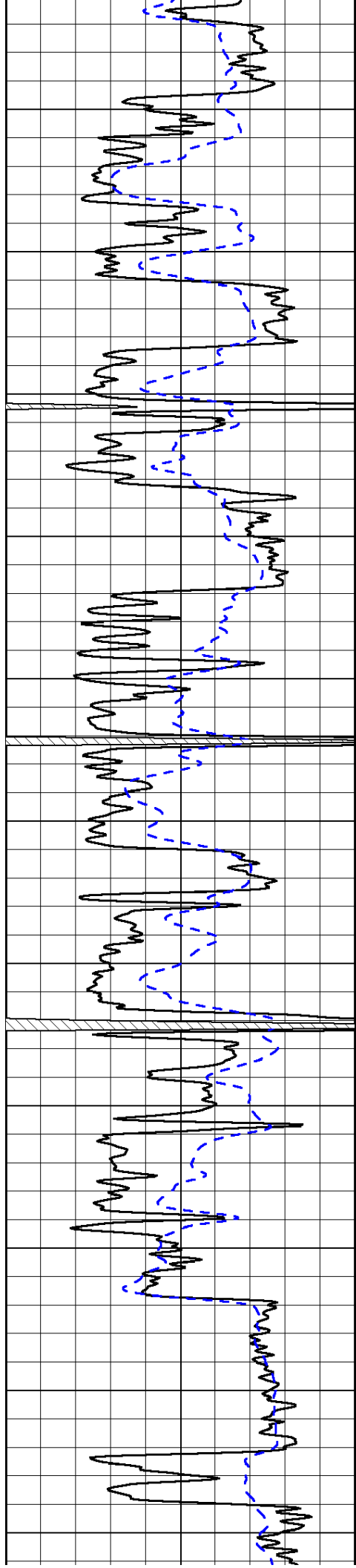
1000	Conductivity	0
15000	Line Tension	0

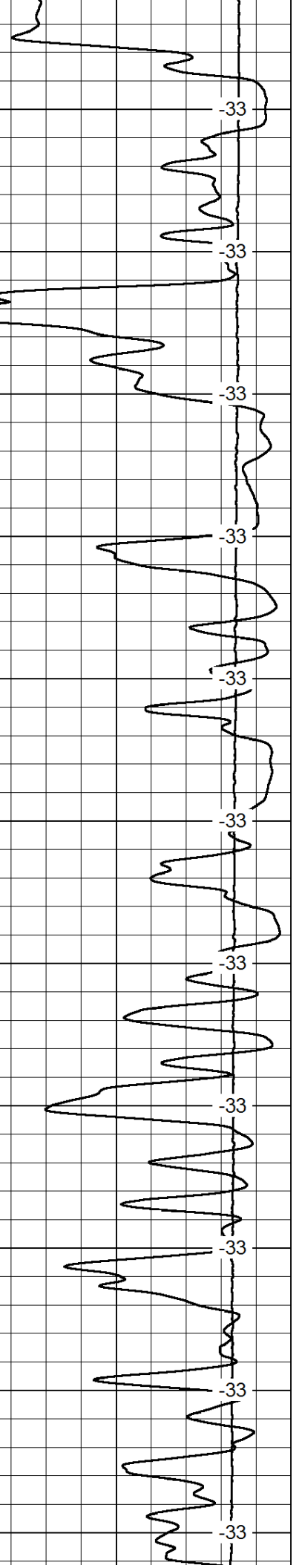
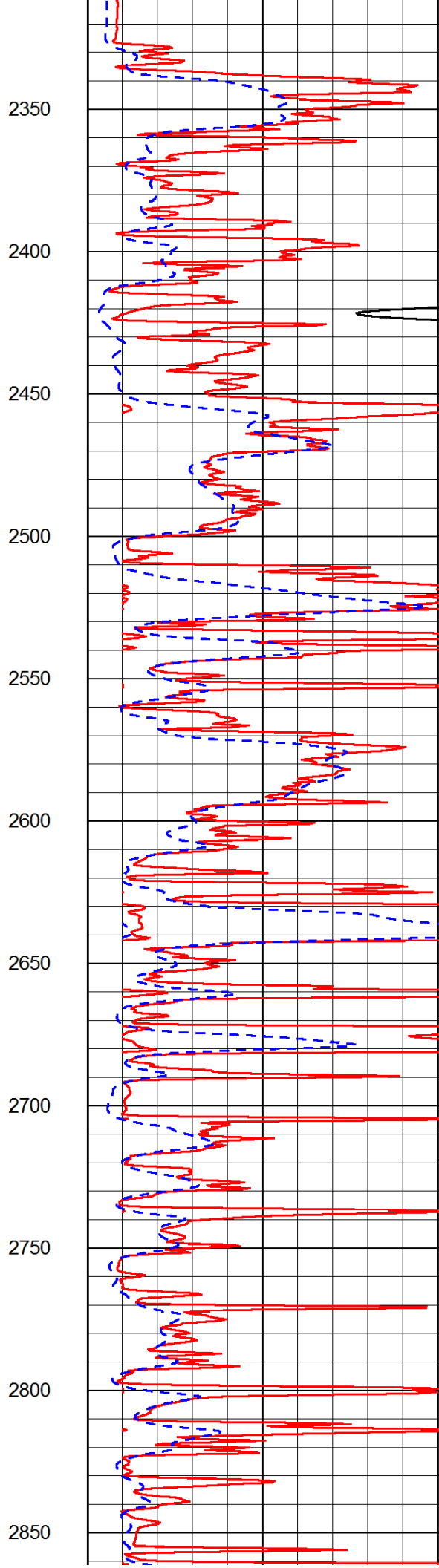
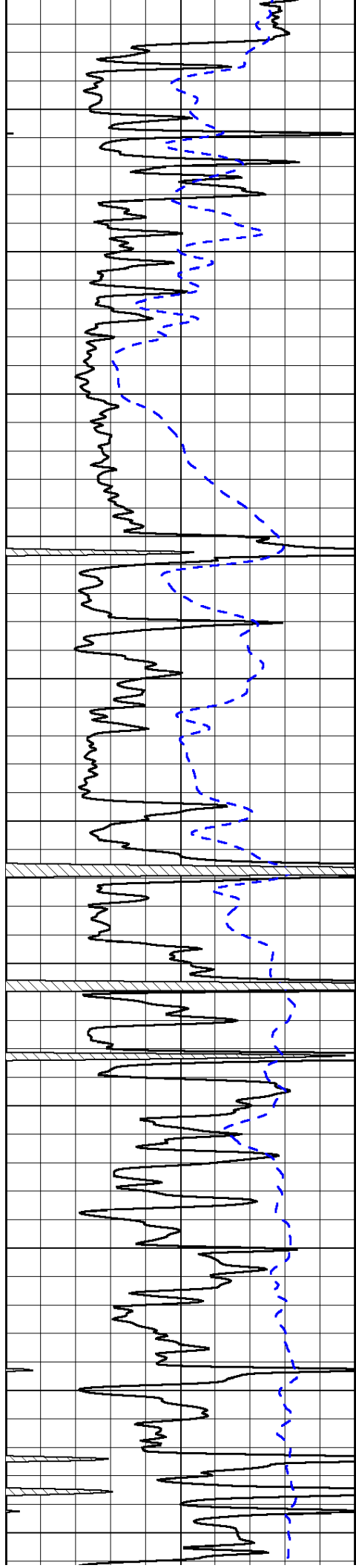
50	Shallow Resistivity	500
50	Deep Resistivity	500

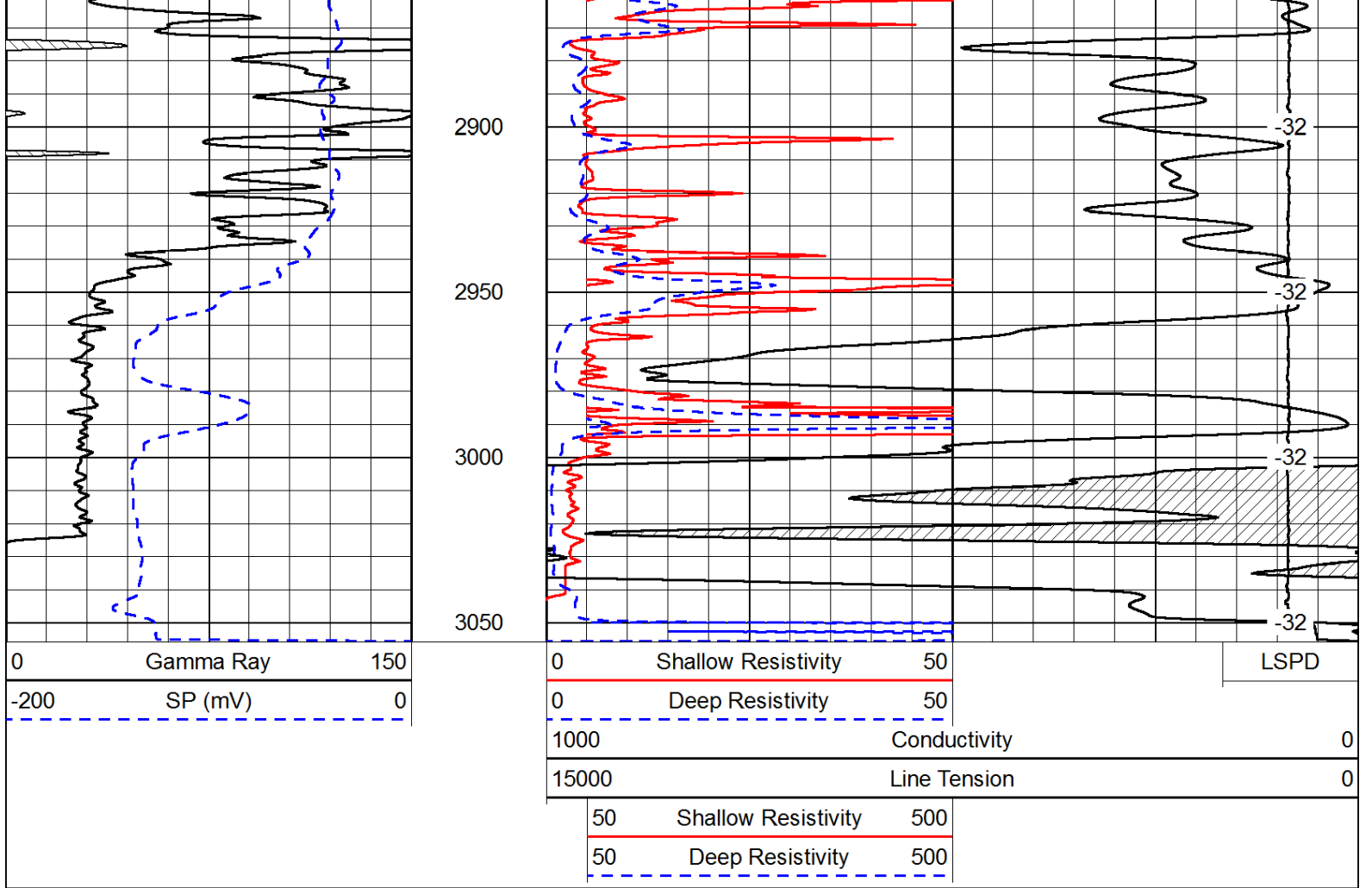




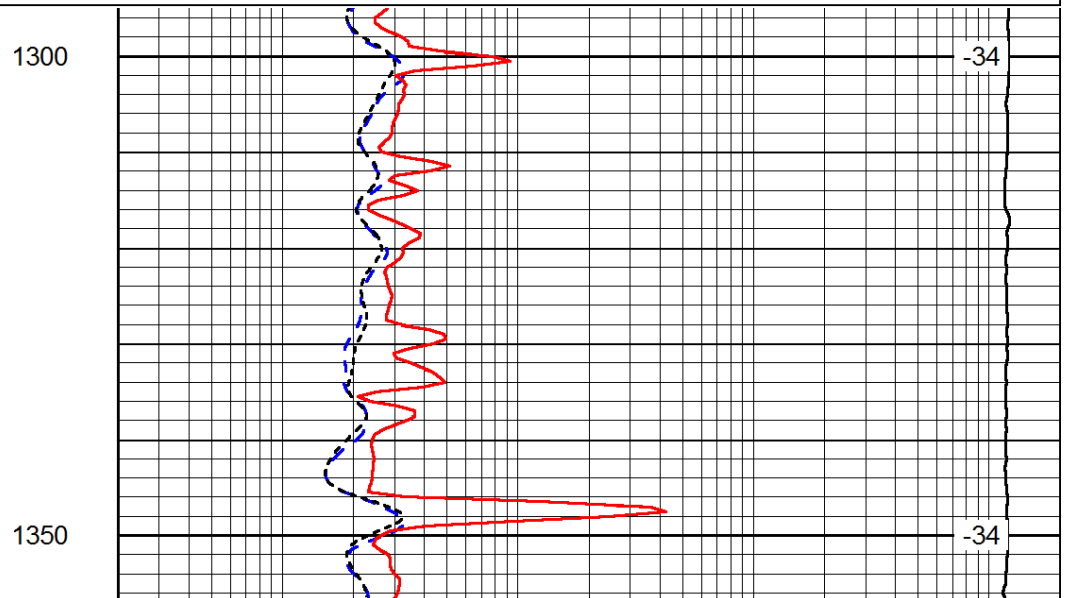
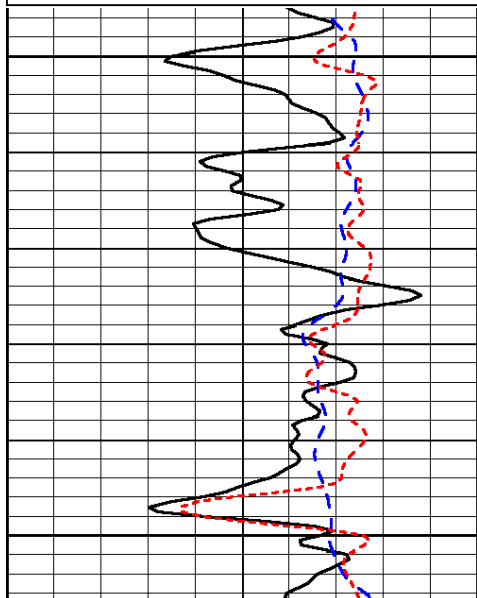
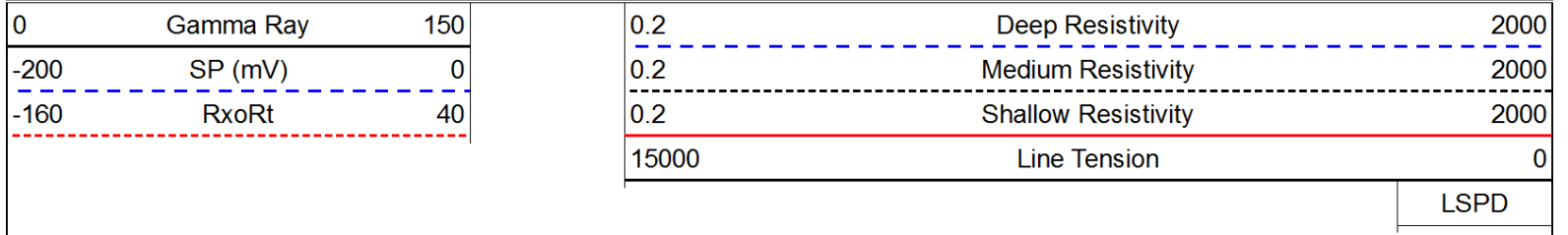


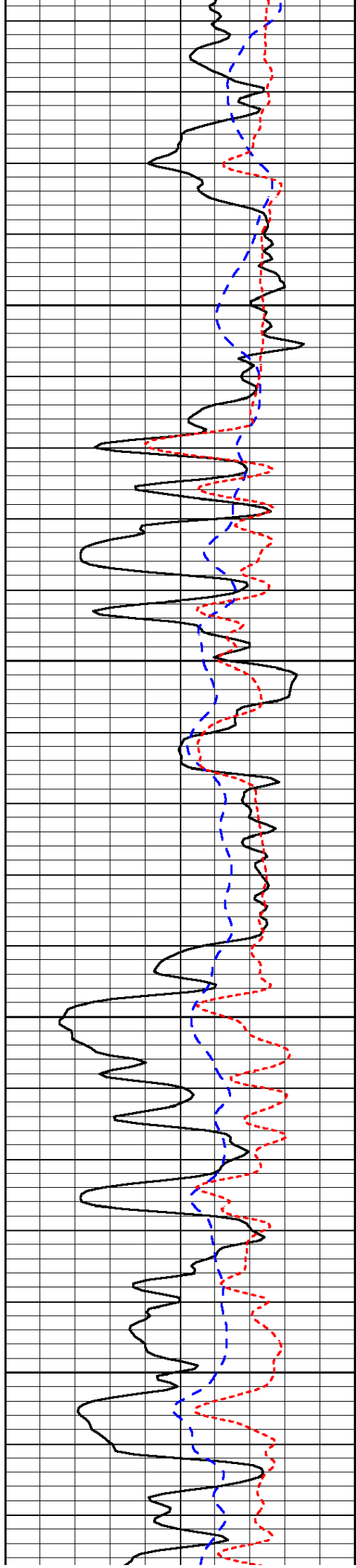






Database File: c:\warrior\data\kent anderson\_nightingale #2\anderson\_kent\_nightengale\_2hd.db  
 Dataset Pathname: DIL/andstck  
 Presentation Format: dil  
 Dataset Creation: Mon Jul 07 16:58:18 2014  
 Charted by: Depth in Feet scaled 1:240



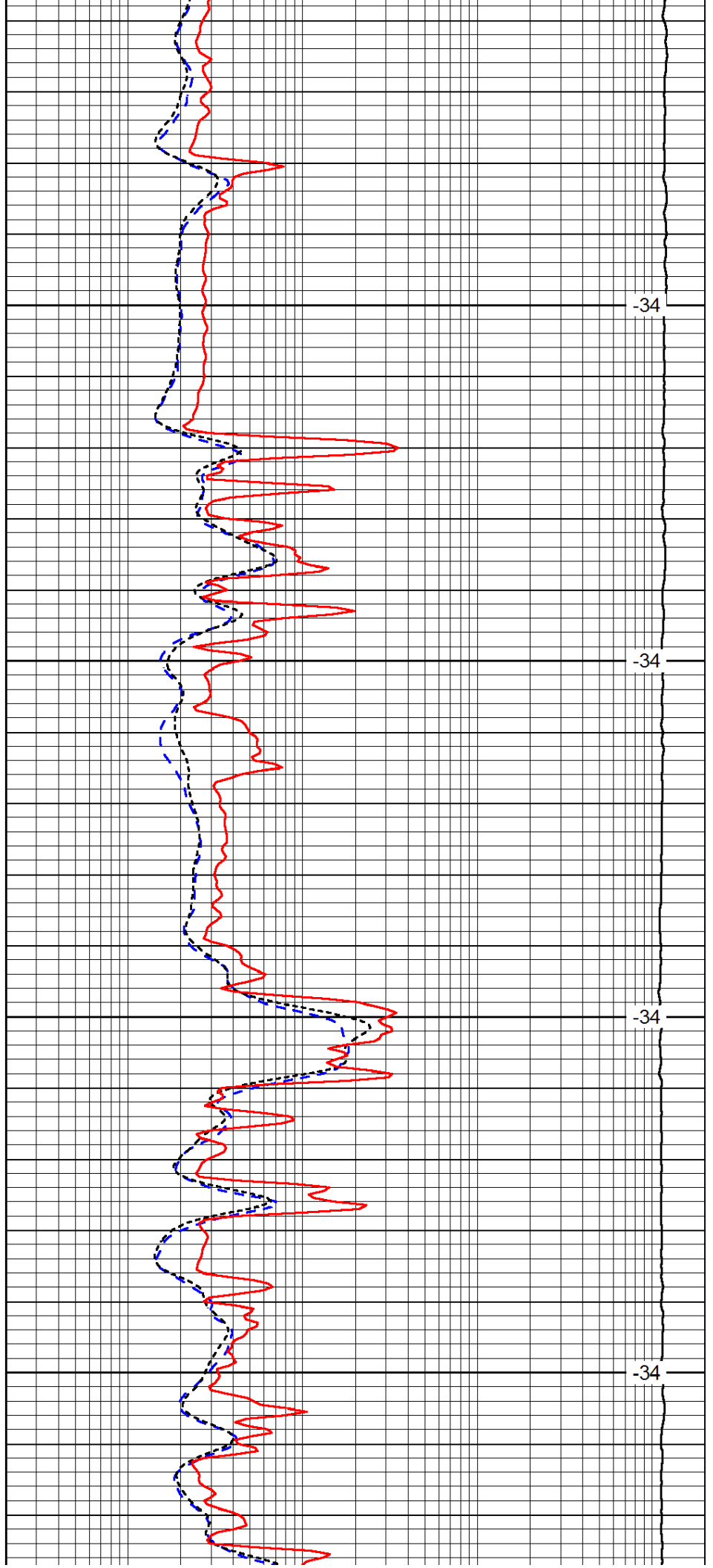


1400

1450

1500

1550

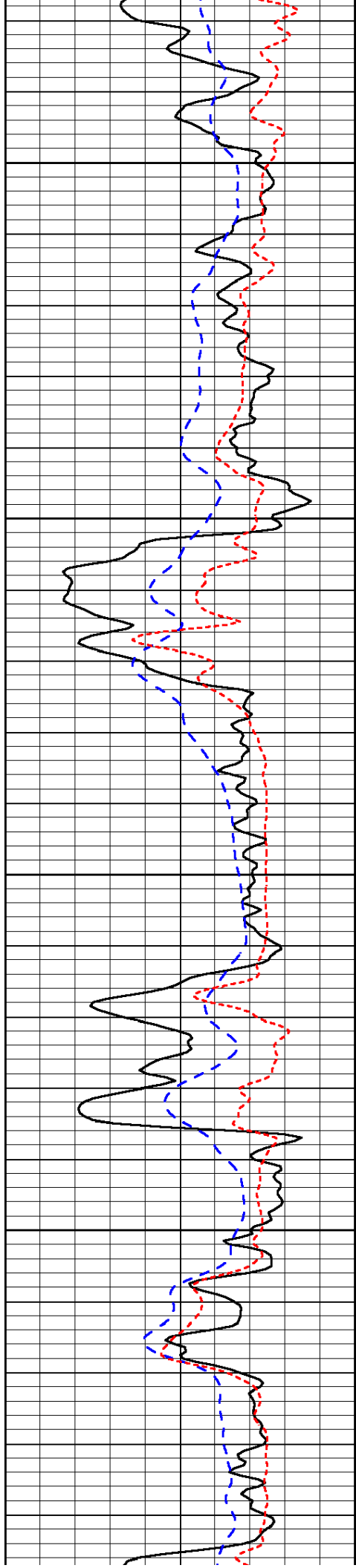


-34

-34

-34

-34

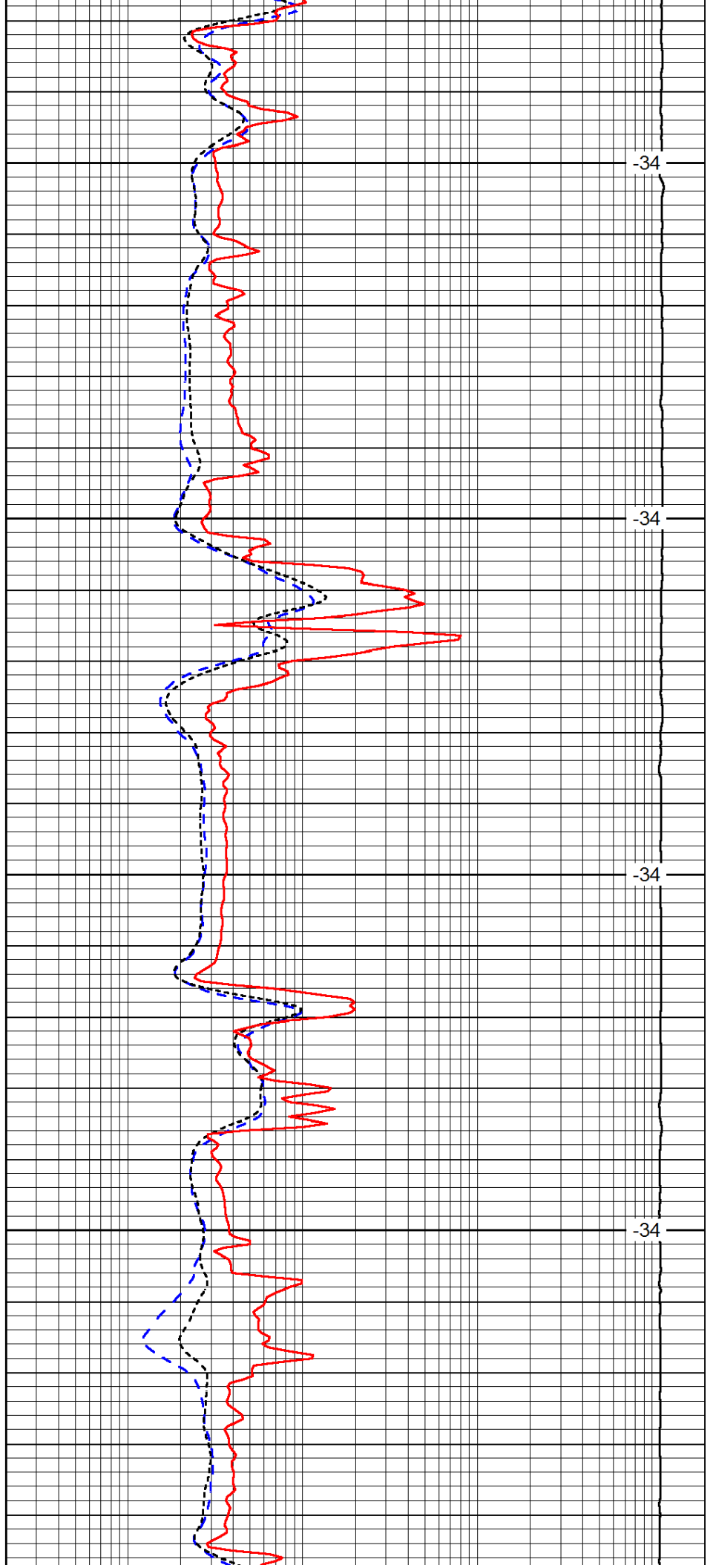


1600

1650

1700

1750

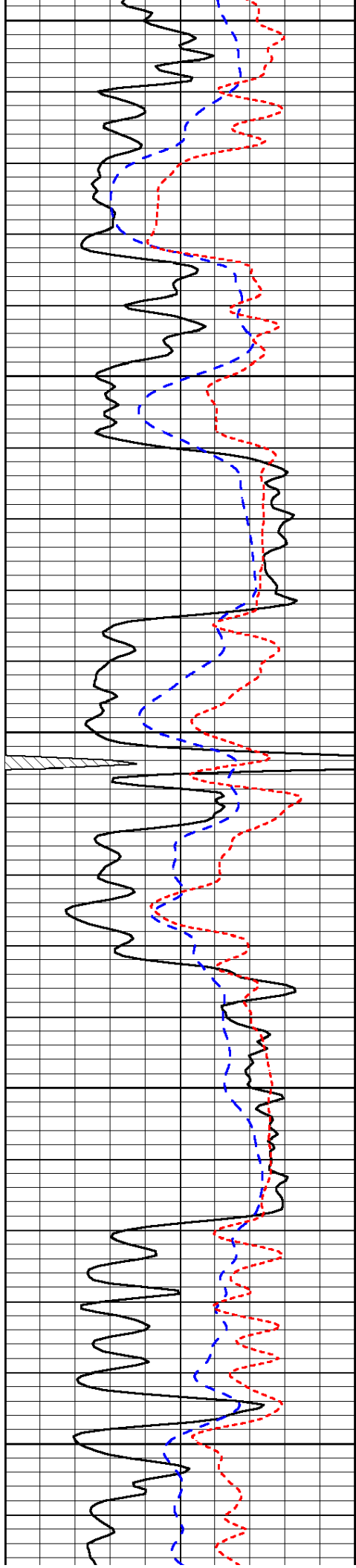


-34

-34

-34

-34



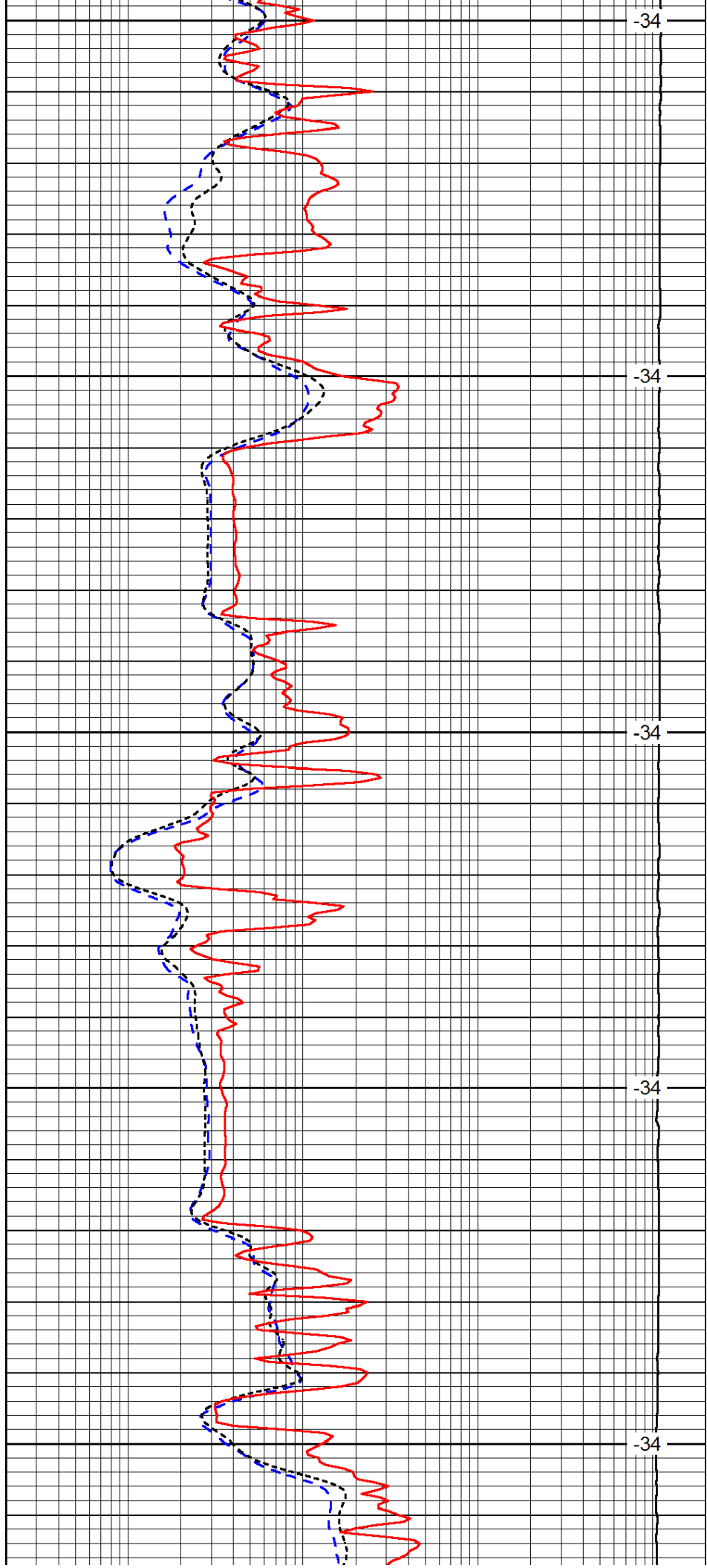
1800

1850

1900

1950

2000



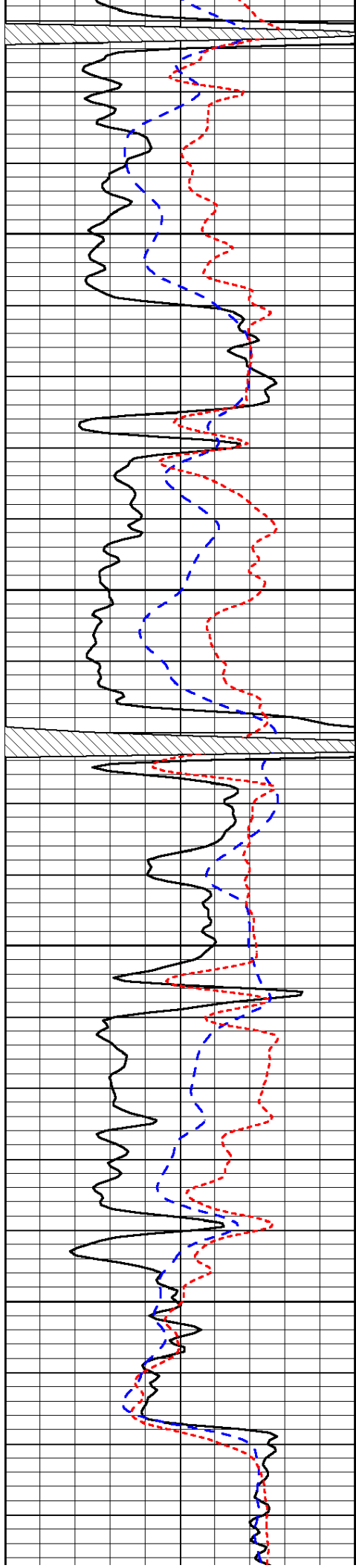
-34

-34

-34

-34

-34

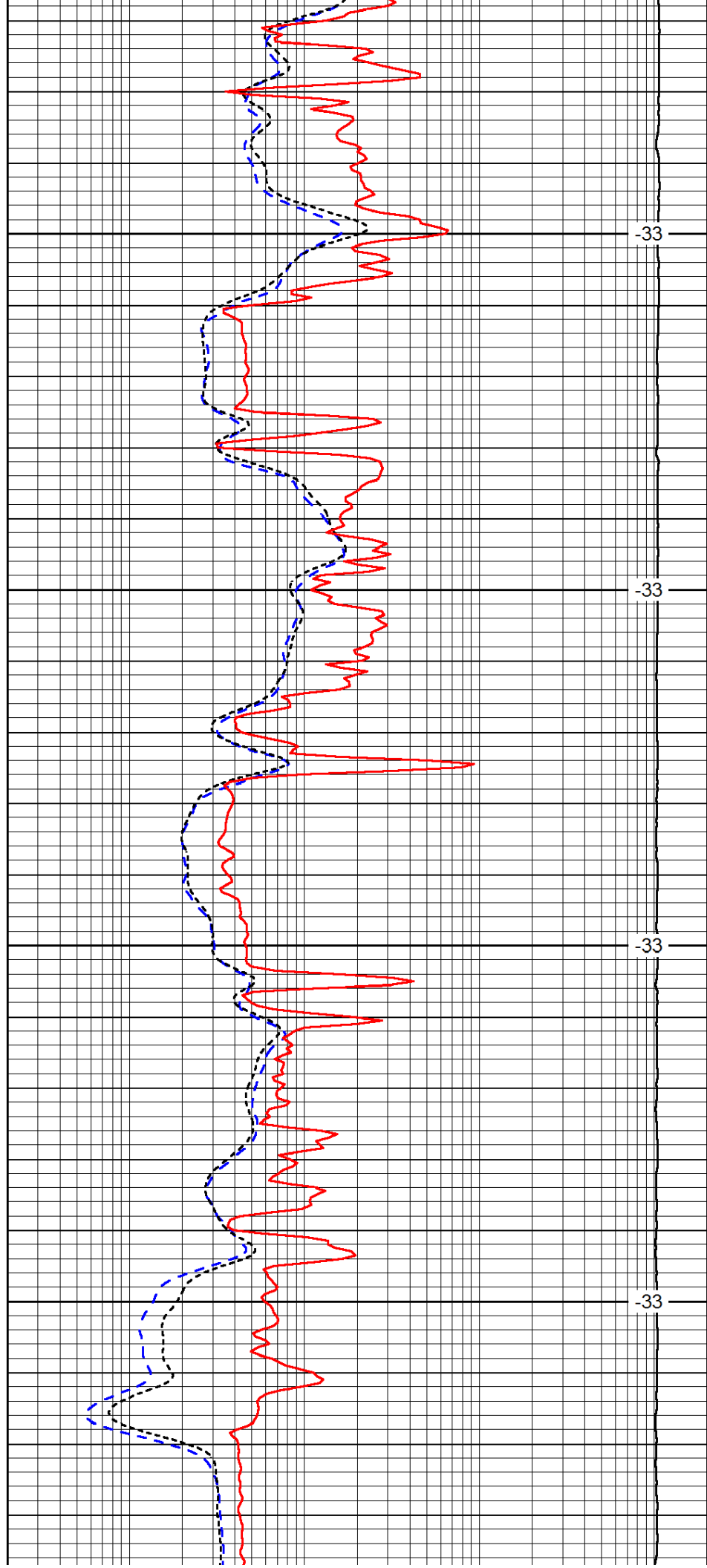


2050

2100

2150

2200

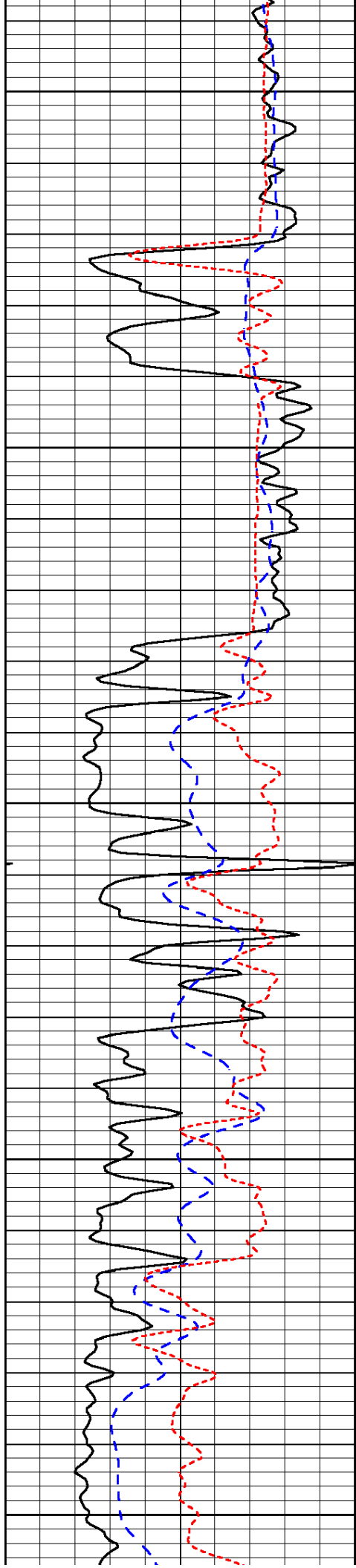


-33

-33

-33

-33



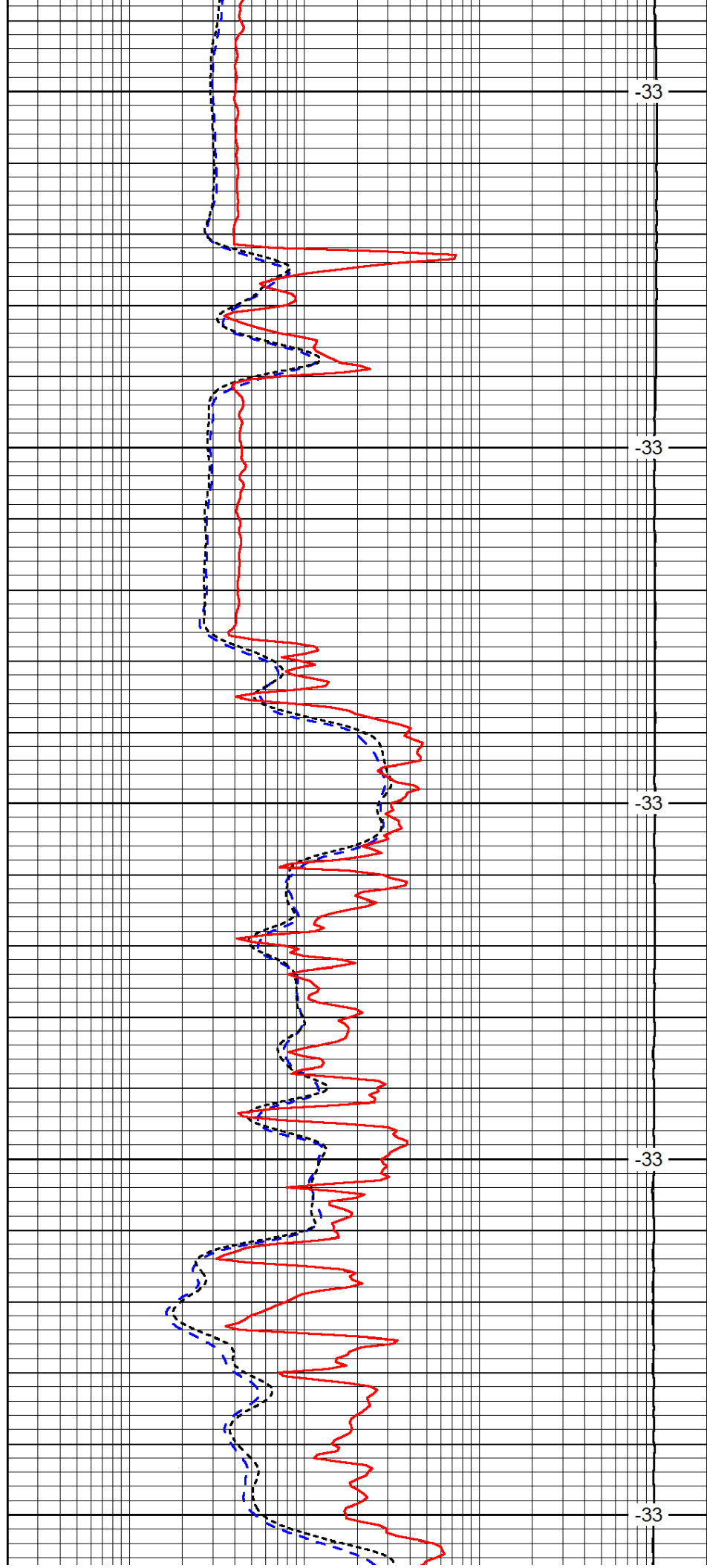
2250

2300

2350

2400

2450



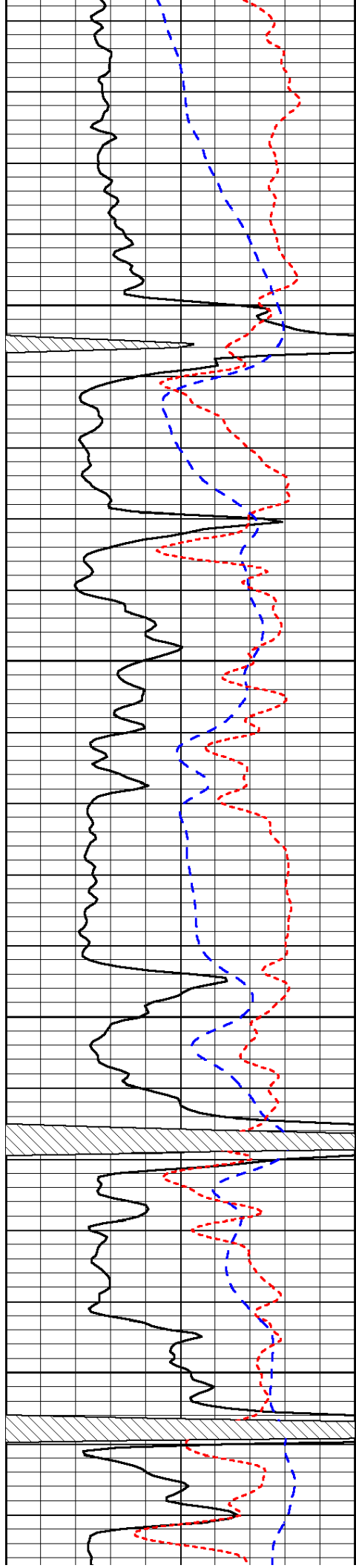
-33

-33

-33

-33

-33

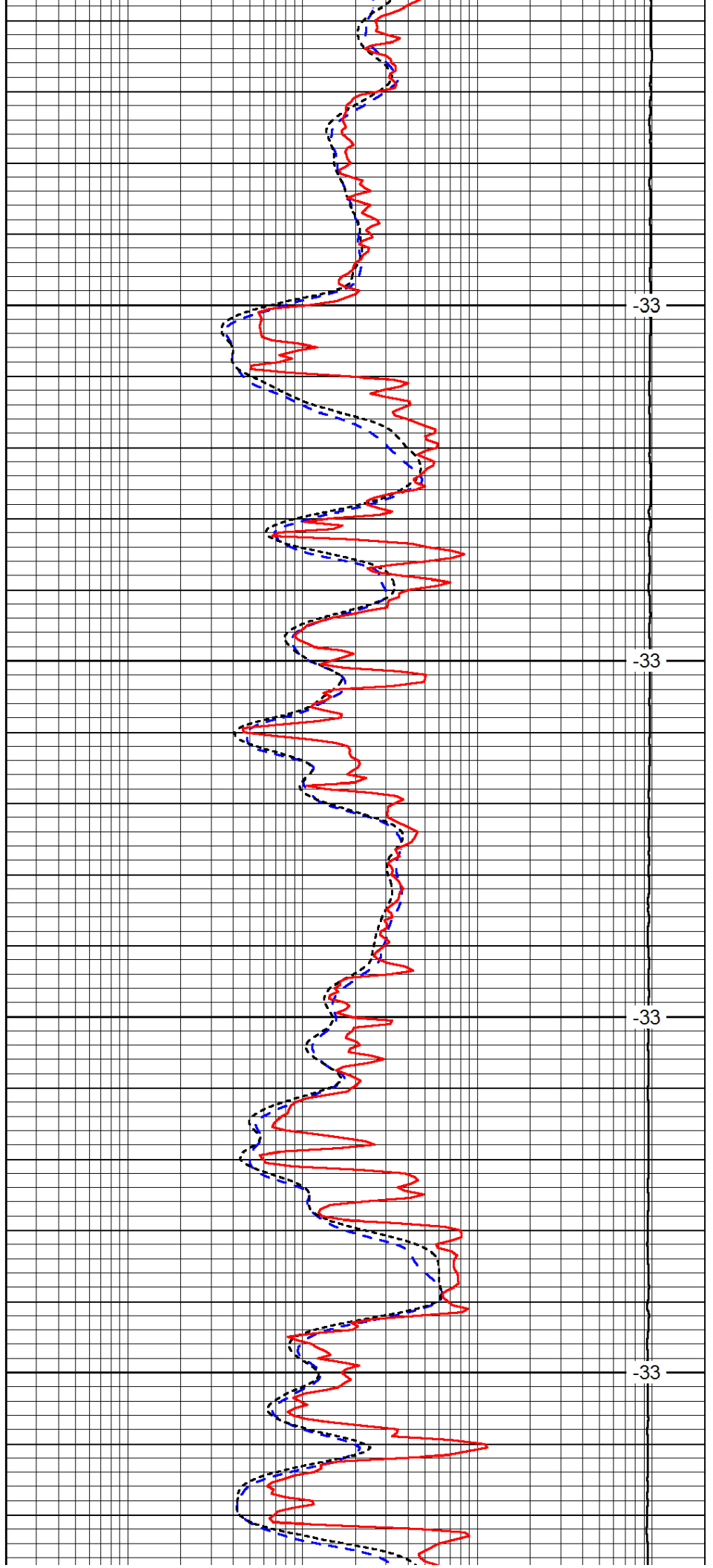


2500

2550

2600

2650

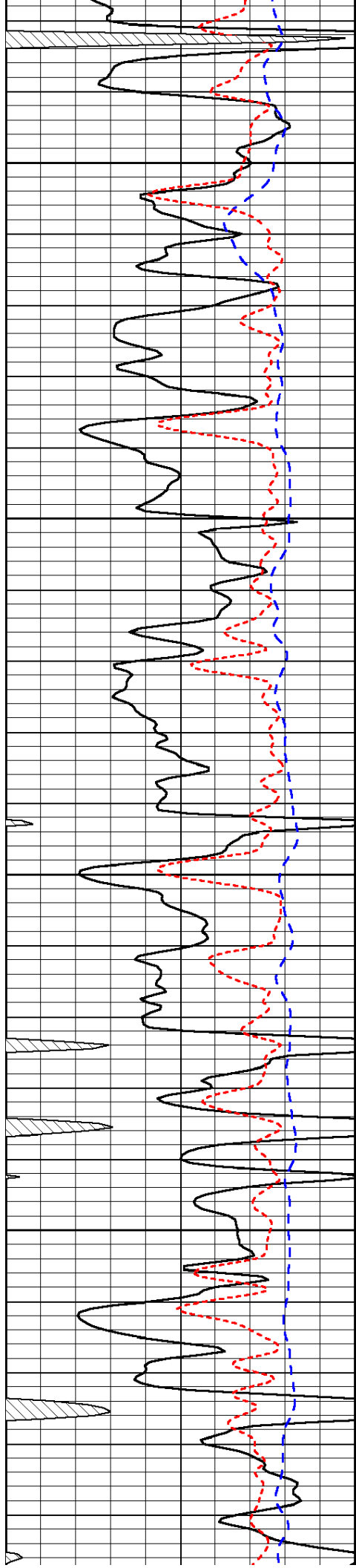


-33

-33

-33

-33

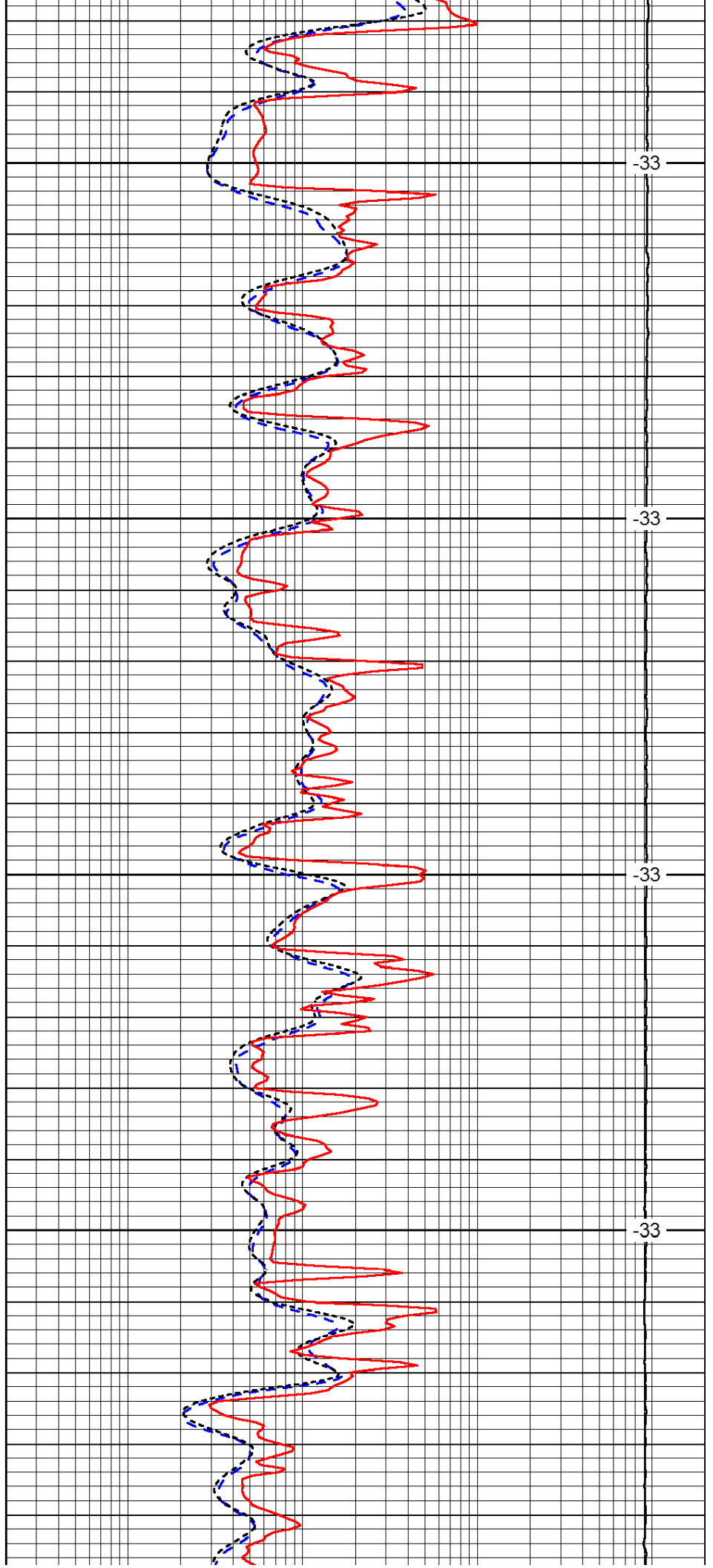


2700

2750

2800

2850

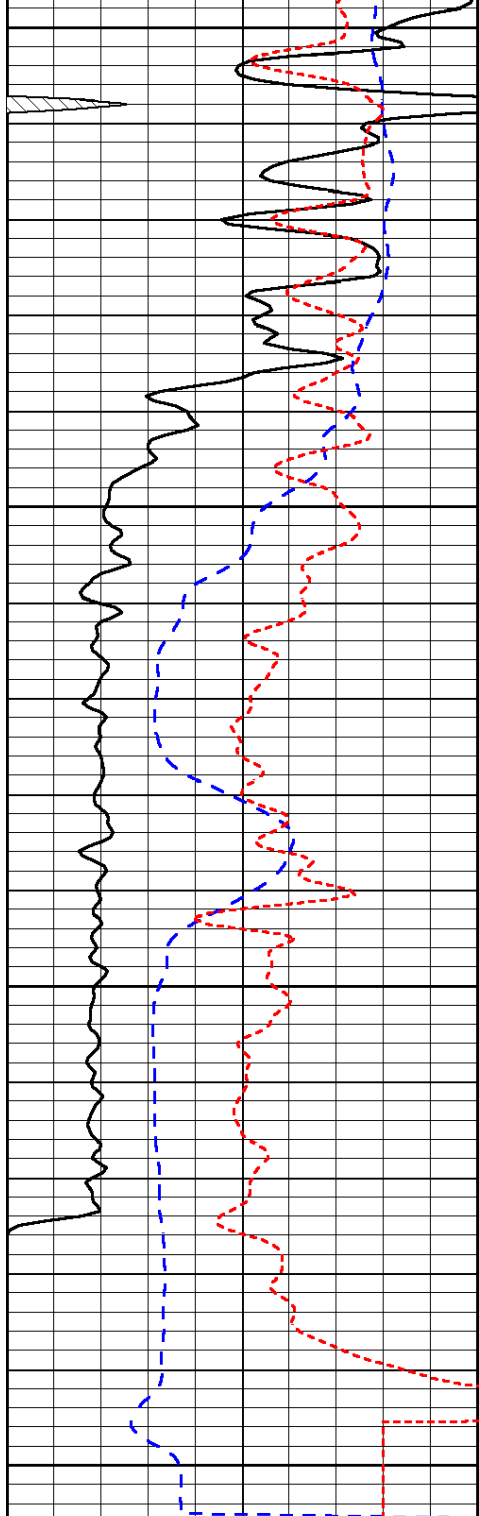


-33

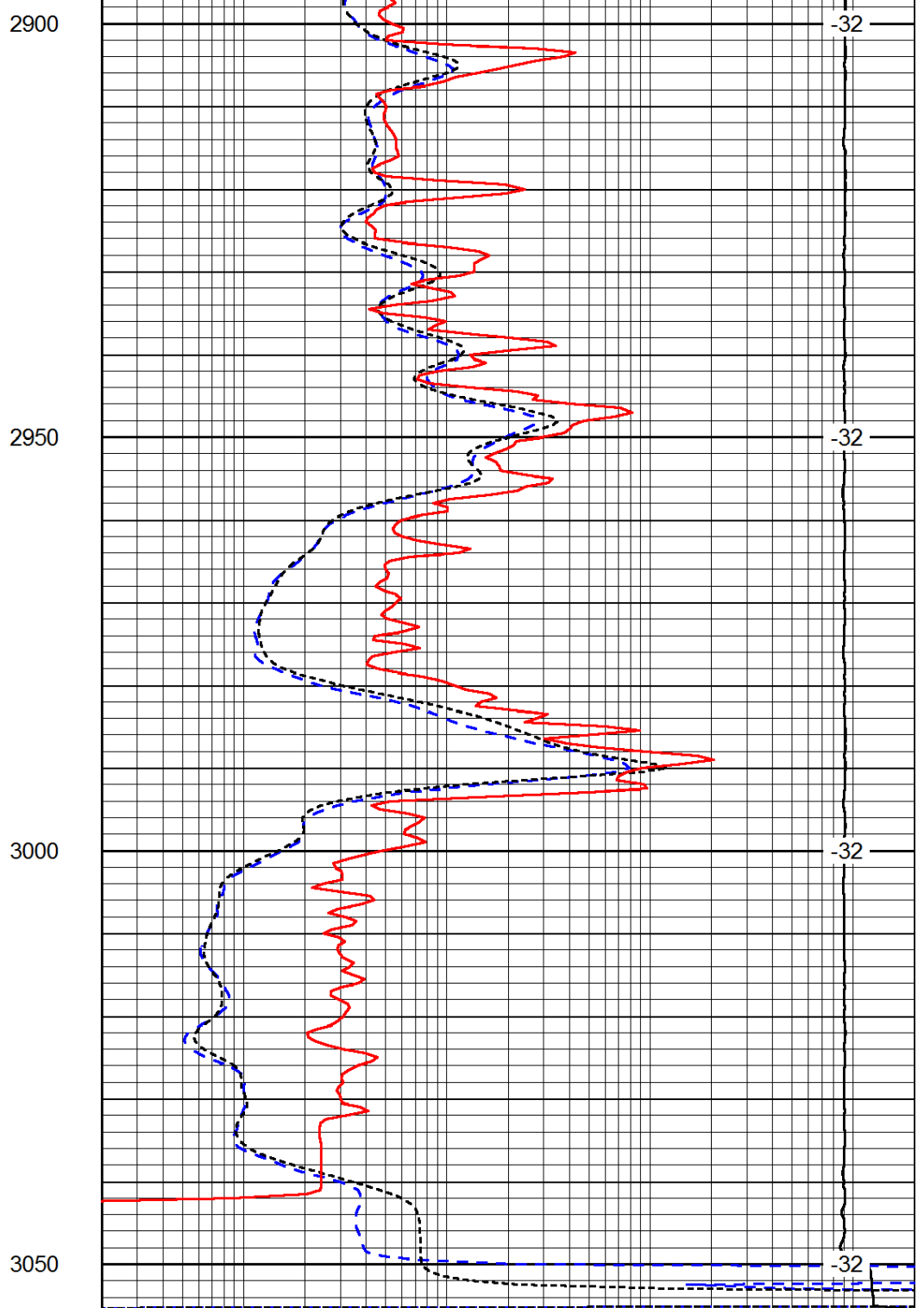
-33

-33

-33



0	Gamma Ray	150
-200	SP (mV)	0
-160	RxoRt	40



0.2	Deep Resistivity	2000
0.2	Medium Resistivity	2000
0.2	Shallow Resistivity	2000
15000	Line Tension	0

LSPD