

**MIDWEST SURVEYS**  
 LOGGING - PERFORATING - CONSULTING SERVICES  
 P.O. Box 68, Ocala, FL 32064  
 913.755.2128

**GAMMA RAY / NEUTRON / CCL**

File No. \_\_\_\_\_  
 Company Hughes Drilling Company  
 Well Braun No. 20-1  
 Field Longacker Southeast  
 County Johnson State Kansas  
 Location \_\_\_\_\_

Location 2300' FSL & 1995' FEL  
 SE-NW-NW-SE

Sec. 36 Typ. 14S Page 21e Elevation 1005'  
 Permanent Datum GL  
 Log Measured From GL  
 Drilling Measured From GL

Date 07-02-2014  
 Run Number One  
 Depth Logger 883.4  
 Bottom Logged Interval 882.4  
 Top Log Interval 20.0  
 Fluid Level Full

Other Services Perforate

K.B. NA  
 D.F. NA  
 G.L. 1005'

Perforate

Other Services

Perforate

Other Services

Perforate

Other Services

Perforate

Other Services

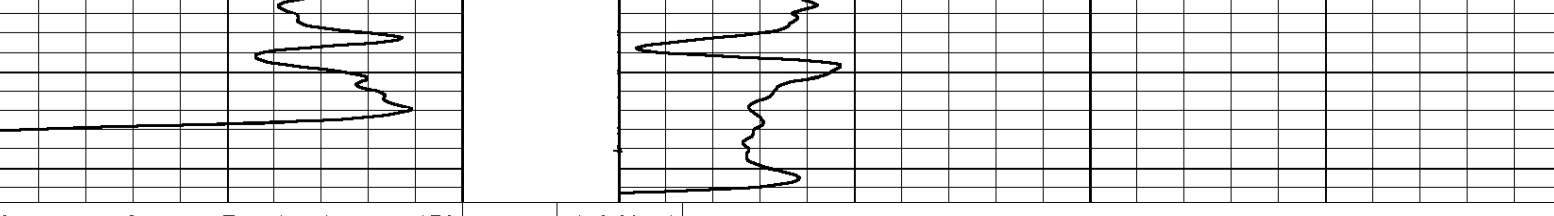
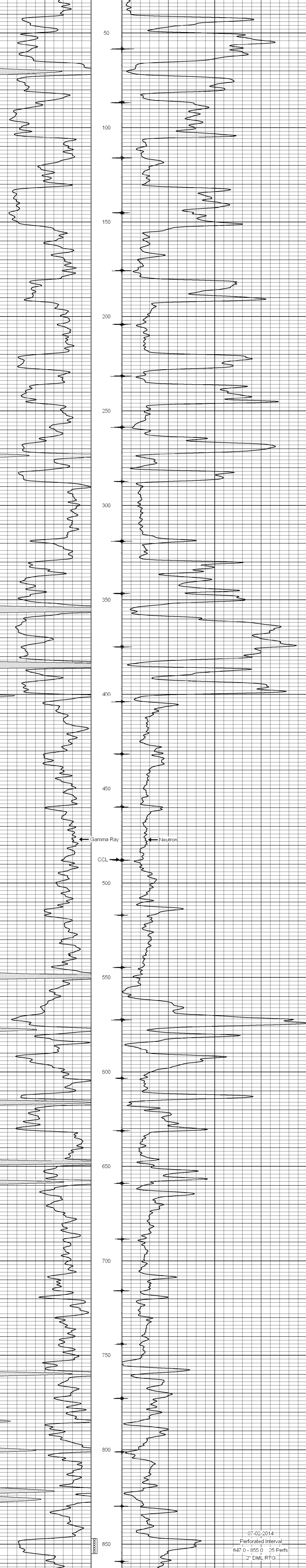
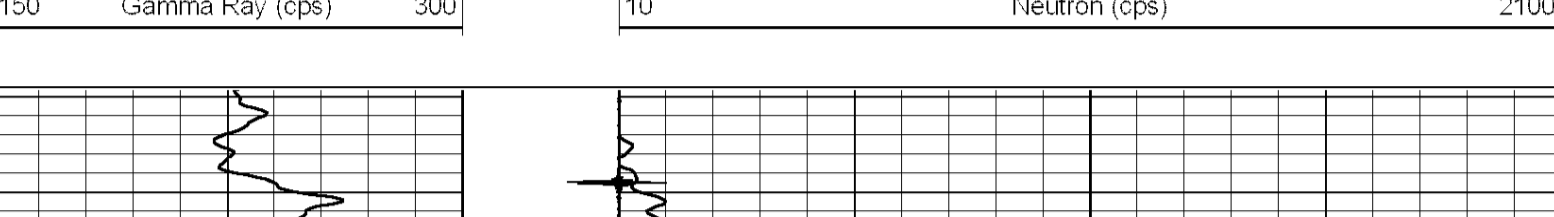
<<< Fold Here >>>

All interpretations are opinions based on inferences from electrical or other measurements and we cannot and do not guarantee the accuracy or correctness of any interpretation, and we shall not, except in the case of gross or willful negligence on our part, be liable or responsible for any loss, costs, damages, or expenses incurred or sustained by anyone resulting from any interpretation made by any of our officers, agents or employees. These interpretations are also subject to our general terms and conditions set out in our current Price Schedule.

Comments

Drilling Contractor :  
 Hughes Drilling Company

Database File: braun20i.db  
 Dataset Pathname: pass1  
 Presentation Format: gr-n-ccl  
 Dataset Creation: Wed Jul 02 09:04:02 2014 by Log SCH 111116  
 Charted by: Depth in Feet scaled 1:240



07-02-2014  
 Perforated Interval  
 847.0 - 855.0 25 Perfs  
 2' DML RTG