



MIDWEST SURVEYS
 LOGGING - PERFORATING - CONSULTING SERVICES
 P.O. Box 68, Ossawatimie, KS 68064
 913 / 755 - 2128

GAMMA RAY / NEUTRON / CCL

File No:

Company: TDR Construction, Inc.

Well: McCoy No.- 6

Field: Paola - Rantoul

County: Franklin

State: Kansas

Location: 3135 FSL & 865' FEL
NE-SW-SE-NE

Other Services: Perforate

Sec. 32 Typ. 15s Page 21e

Permittal Datum: GL Elevation: 1045'

Log Measured From: GL

Drilling Measured From: GL

Date: 05-26-2014

Run Number: One

Depth Driller: 840.0

Depth Logger: 786.9

Bottom Logged Interval: 785.9

Top Log Interval: 20.0

Fluid Level: Full

Type Fluid: Water

Density / Viscosity: NA

Salinity - PPM Cl: NA

Max. Recorded Temp: NA

Estimated Cement Top: 0.0

Equipment No.: 107

Recorded By: Steve Windisch

BORE-HOLE RECORD		CASING RECORD				
RIUN	BIT	FROM	TO	WT.	FROM	TO
One	12.25"	0.0	22.0	8.625"	24.0 #	0.0
Two	6.75"	22.0	840.0	4.50"	10.5 #	0.0
				Baffle	Set	At

Witnessed By: Lance Town

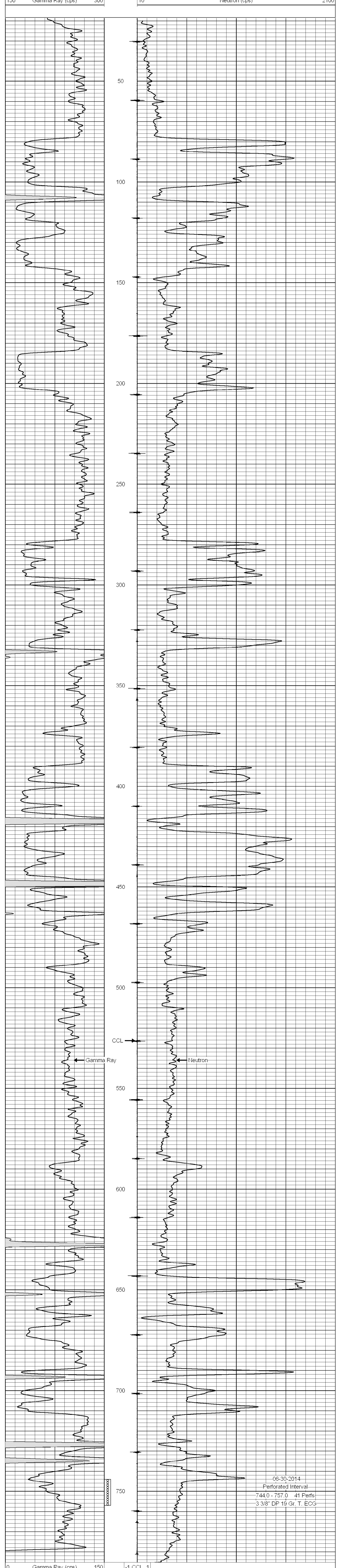
<<< Fold Here >>>

All interpretations are opinions based on inferences from electrical or other measurements and we cannot and do not guarantee the accuracy or correctness of any interpretation, and we shall not, except in the case of gross or willful negligence on our part, be liable or responsible for any loss, costs, damages, or expenses incurred or sustained by anyone resulting from any interpretation made by any of our officers, agents or employees. These interpretations are also subject to our general terms and conditions set out in our current Price Schedule.

Comments

Drilling Contractor :
Town Oilfield Services, Inc.

Database File: mcooy6.db
 Dataset Pathname: pass1
 Presentation Format: gr-n-ccl
 Dataset Creation: Thu Jun 26 14:46:09 2014 by Log SCH 111116
 Charted by: Depth in Feet scaled 1:240



06-30-2014
 Perforated Interval
 744.0 - 757.0 41 Perfs
 3 3/8" DP 19 Gr. T. ECG