



MIDWEST SURVEYS
 LOGGING - PERFORATING - CONSULTING SERVICES
 P.O. Box 68, Osawatomie, KS 66064
 913 / 755 - 2128

GAMMA RAY / NEUTRON / CCL

File No. Company TDR Construction, Inc.
 Well Hoehn No. I-22
 Field Paola - Rantoul

County Franklin State Kansas

Location 2970' FSL & 4225' FEL
 E12-SE-SW-NW

Sec. 5 Typ. 16s Eye 21e
 Perforated From GL Elevation 984'
 Log Measured From GL
 Drilling Measured From GL 984'

Date 08-27-2014
 Run Number One
 Depth Dialer 780.0
 Depth Logger 726.0
 Bottom Logged Interval 724.0
 Top Log Interval 20.0
 Fluid Level Full

Type Fluid		Water	
Density / Viscosity	NA		
Salinity - PPM Cl	NA		
Max Recorded Temp	NA		
Estimated Cement Top	0.0		
Equipment No.	107	Osawatimie	
Recorded By	Steve Wandsch		
Witnessed By	Lance Town		

BORE-HOLE RECORD				CASING RECORD			
Run No.	BIT	FROM	TO	SIZE	WGT.	FROM	TO
One	9.875"	0.0	21.0	7.00"	17.0#	0.0	21.0
Two	5.875"	21.0	790.0	2.875"	6.5 #	0.0	756.0
				Baffle	Set	At	727.0

<<< Fold Here >>>

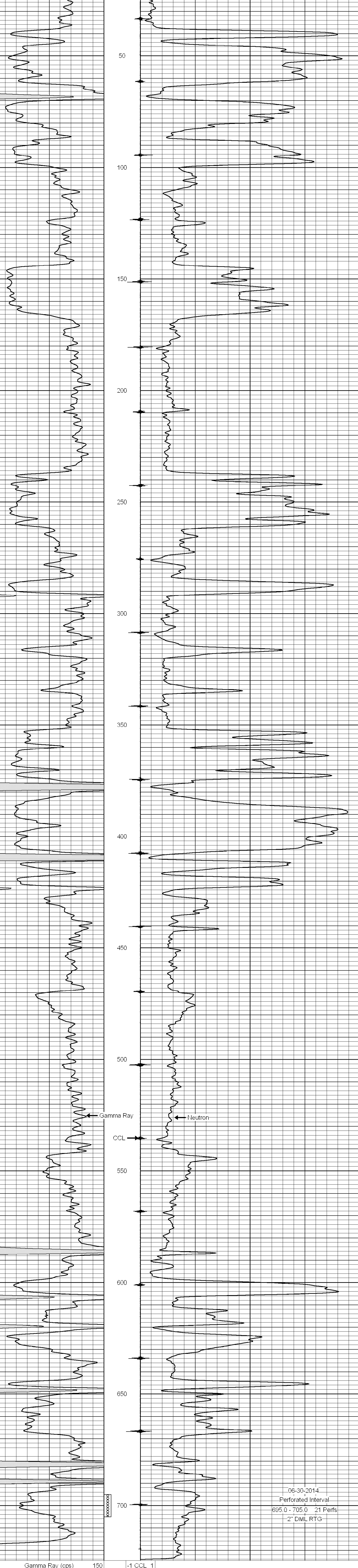
All interpretations are opinions based on inferences from electrical or other measurements and we cannot and do not guarantee the accuracy or correctness of any interpretation, and we shall not, except in the case of gross or willful negligence on our part, be liable or responsible for any loss, costs, damages, or expenses incurred or sustained by anyone resulting from any interpretation made by any of our officers, agents or employees. These interpretations are also subject to our general terms and conditions set out in our current Price Schedule.

Comments

Drilling Contractor :
Town Oilfield Services, Inc.

Database File: hoehn 22i.db
 Dataset Pathname: pass1
 Presentation Format: gr-n-ccl
 Dataset Creation: Fri Jun 27 13:40:16 2014 by Log SCH 111116
 Charted by: Depth in Feet scaled 1:240

0	Gamma Ray (cps)	150	-1 CCL 1	10	Neutron (cps)	2100
150	Gamma Ray (cps)	300				



06-30-2014
 Perforated Interval
 695.0 - 705.0 21 Perfs
 2" DML RTG

0	Gamma Ray (cps)	150	-1 CCL 1	10	Neutron (cps)	2100
150	Gamma Ray (cps)	300				