



**COMPLETION
& PRODUCTION
SERVICES CO.**

**MICRO
LOG**

Company MAI OIL OPERATIONS, INC.
Well T & P MILLER #1
Field HAMPTON NORTHEAST
County RUSH
State KANSAS

Company MAI OIL OPERATIONS, INC.
Well T & P MILLER #1
Field HAMPTON NORTHEAST
County RUSH State KANSAS

Location: API # : 15-165-22063-0000
2300' FNL & 480' FWL
NE - SW - SW - NW
SEC 31 TWP 16S RGE 19W
Permanent Datum GROUND LEVEL Elevation 2074
Log Measured From KELLY BUSHING 8' A.G.L.
Drilling Measured From KELLY BUSHING
Other Services
CDL/CNL
DIL
Elevation
K.B. 2082
D.F. 2080
G.L. 2074

Date	4/21/14		
Run Number	TWO		
Depth Driller	3899		
Depth Logger	3900		
Bottom Logged Interval	3898		
Top Log Interval	3100		
Casing Driller	8 5/8" @ 1103'		
Casing Logger	1103		
Bit Size	7 7/8"		
Type Fluid in Hole	CHEMICAL MUD	CHLORIDES 1,500 PPM	
Density / Viscosity	8.9/60		
pH / Fluid Loss	10.0/5.8		
Source of Sample	FLOWLINE		
Rim @ Meas. Temp	.500 @ 90F		
Rmf @ Meas. Temp	.375 @ 90F		
Rmc @ Meas. Temp	.500 @ 90F		
Source of Rmf / Rmc	MEASUREMENT		
Rim @ BHT	.391 @ 115F		
Time Circulation Stopped	3.5 HOURS		
Time Logger on Bottom	9:00 A.M.		
Maximum Recorded Temperature	115F		
Equipment Number	4854		
Location	HAYS, KANSAS		
Recorded By	JEFF LUEBBERS		
Witnessed By	JIM MUSGROVE		

<<< Fold Here >>>

All interpretations are opinions based on inferences from electrical or other measurements and we cannot and do not guarantee the accuracy or correctness of any interpretation, and we shall not, except in the case of gross or willful negligence on our part, be liable or responsible for any loss, costs, damages, or expenses incurred or sustained by anyone resulting from any interpretation made by any of our officers, agents or employees. These interpretations are also subject to our general terms and conditions set out in our current Price Schedule.

Comments

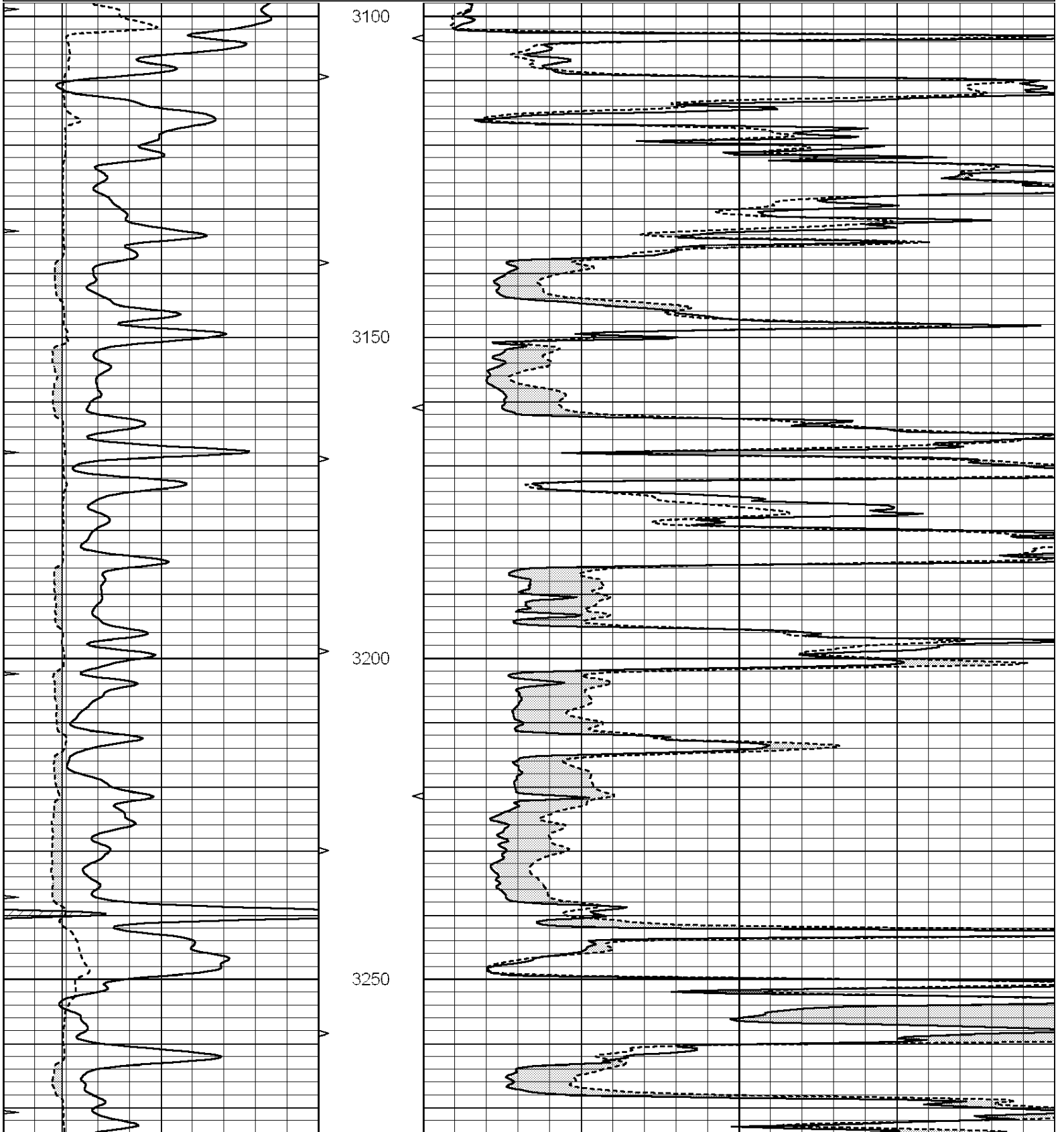
THANK YOU FOR USING "NABORS" HAYS, KANSAS (785) 628-6395
DIRECTIONS
LIEBENTHAL, KS., S. TO BLKTOP, 9W. TO (CEMETARY), 1 1/2S., E. INTO

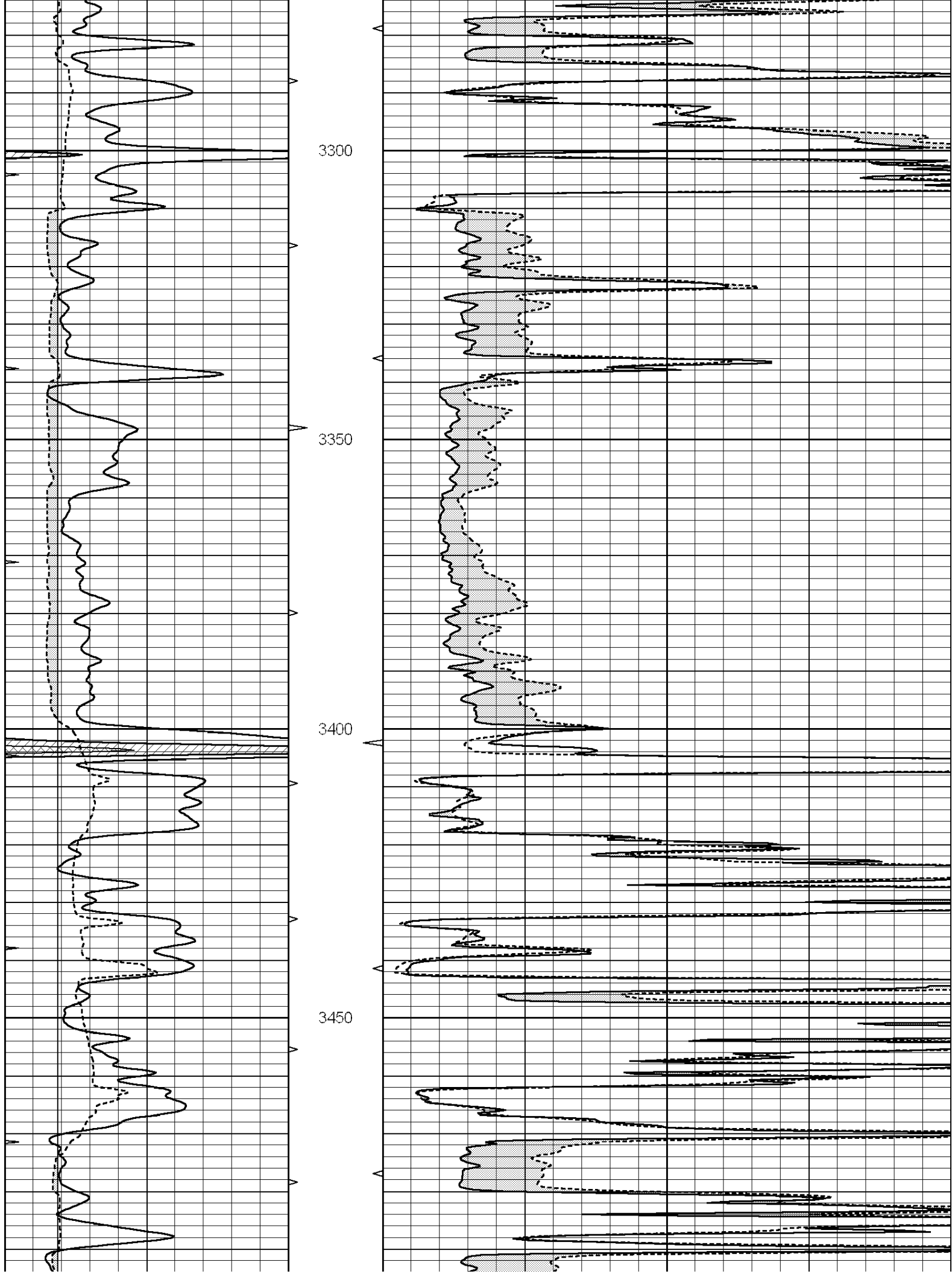


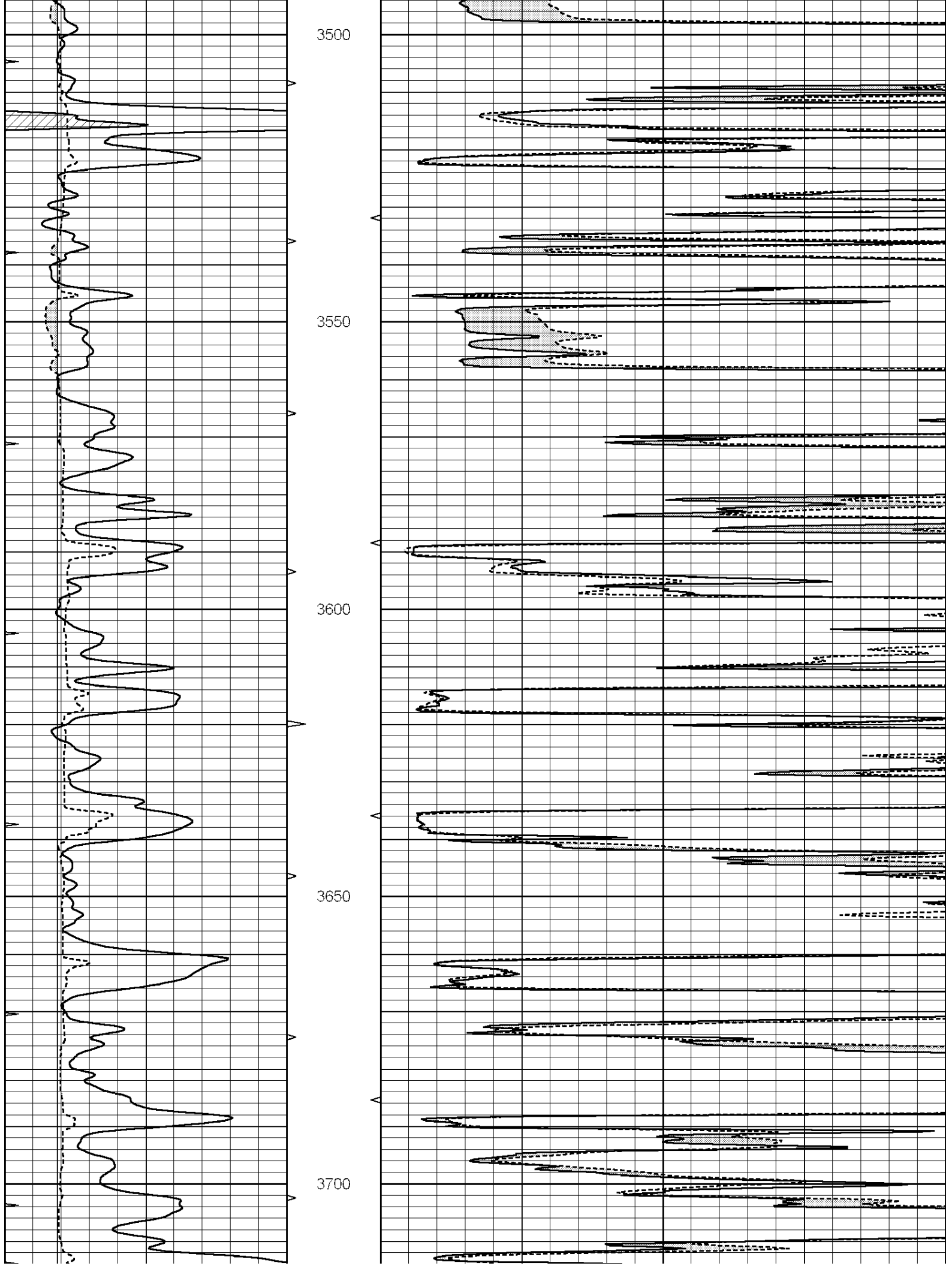
MAIN SECTION

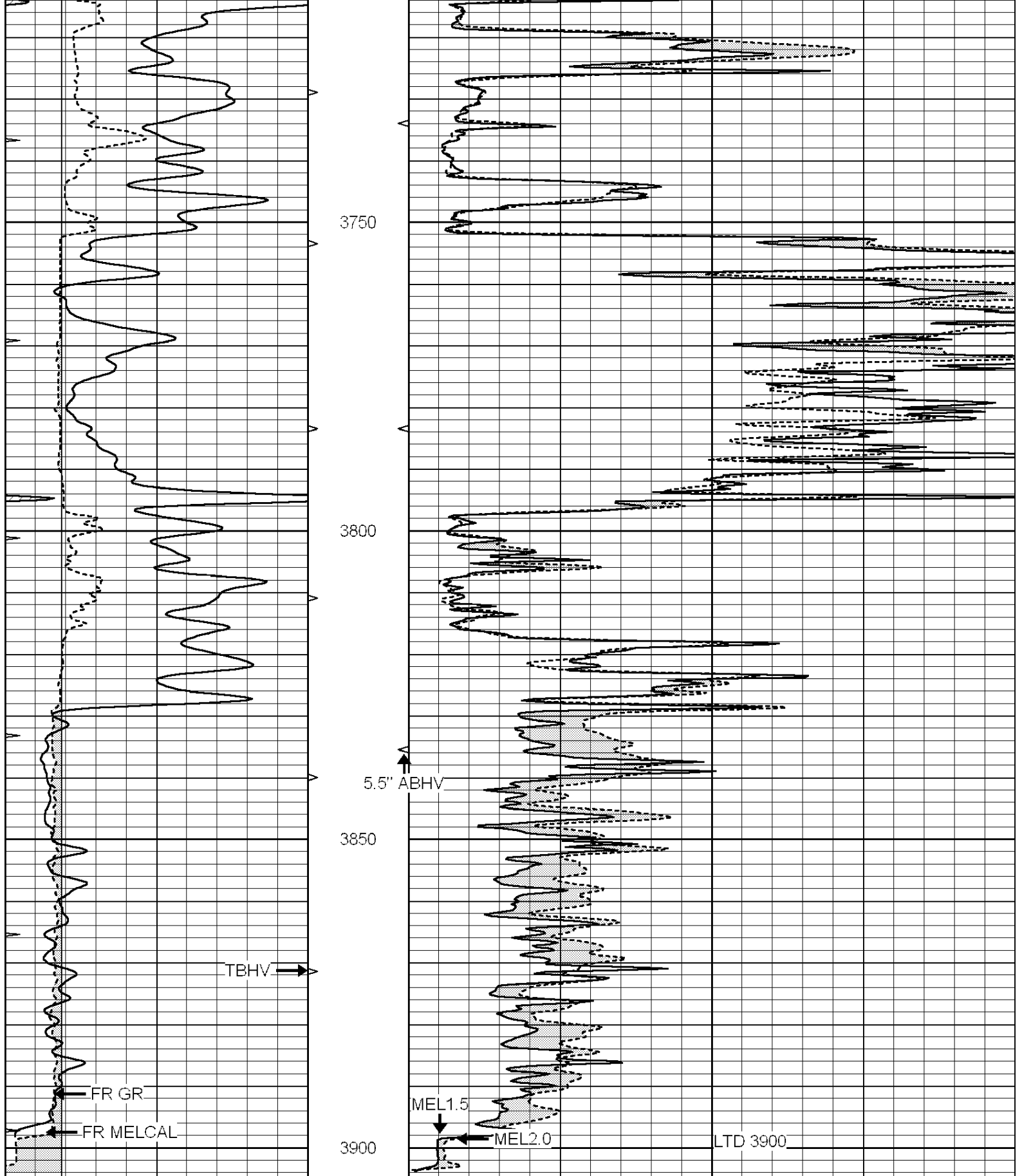
Database File: 23813ddn.db
 Dataset Pathname: pass6.2
 Presentation Format: micro
 Dataset Creation: Mon Apr 21 11:41:33 2014 by Calc SOC 120430
 Charted by: Depth in Feet scaled 1:240

0	GAMMA RAY (GAPI)	150	ABHV	0	MEL1.5 (Ohm-m)	20
6	CALIPER (in)	16	10 (ft3)	0	MEL2.0 (Ohm-m)	20
0	MINMK	20	TBHV			
			0 (ft3)	10		







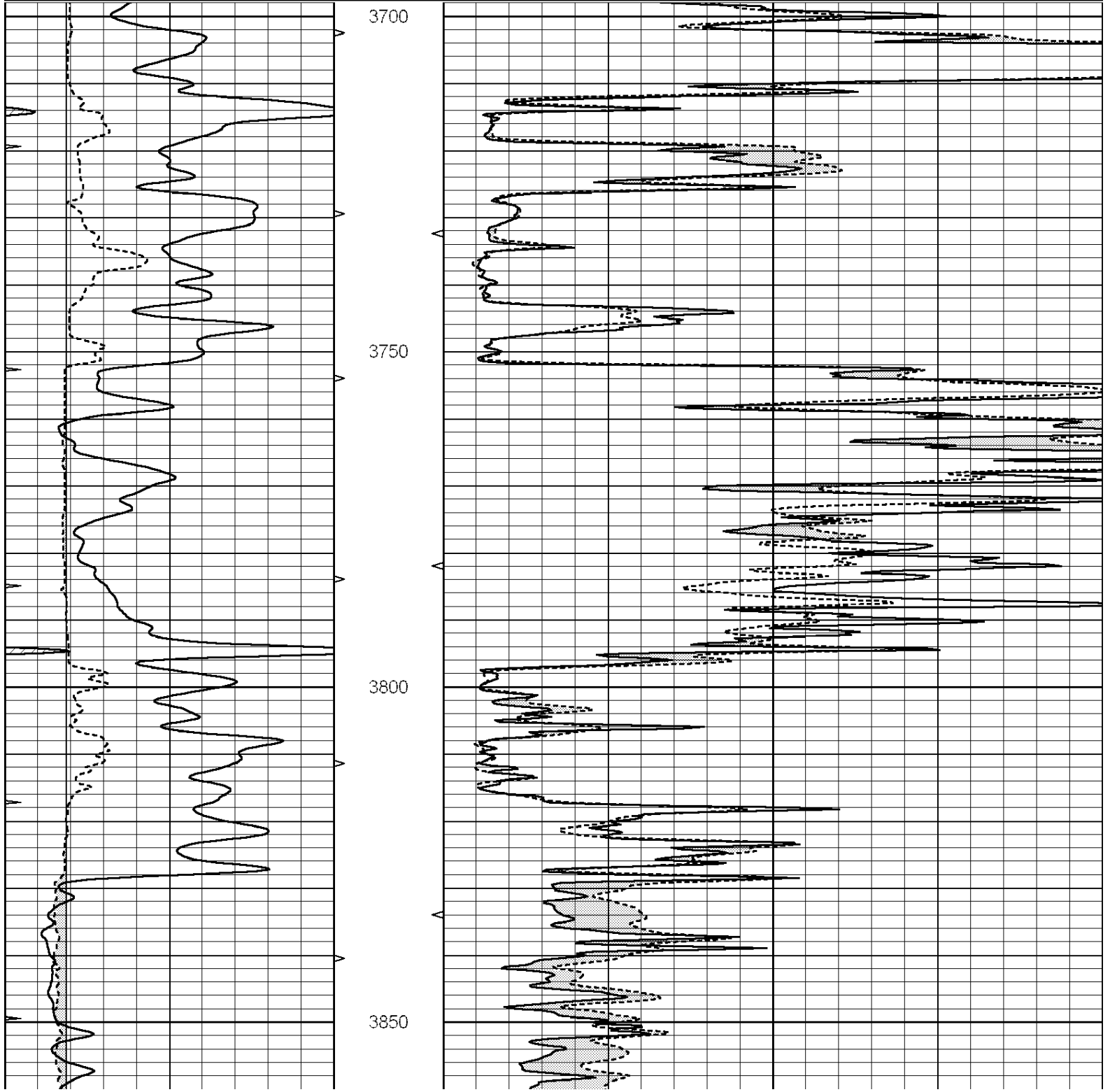


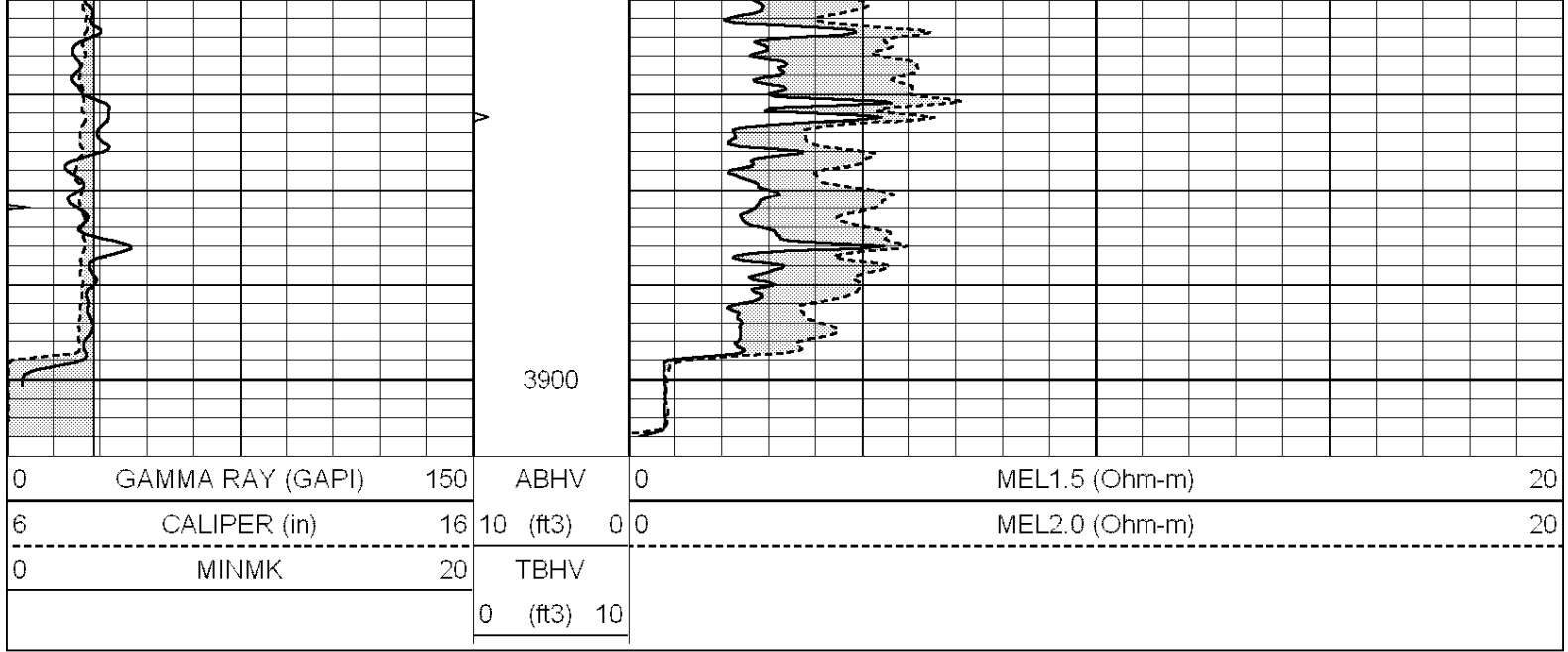
0	GAMMA RAY (GAPI)	150	ABHV	0	MEL1.5 (Ohm-m)	20
6	CALIPER (in)	16	10 (ft3)	0 0	MEL2.0 (Ohm-m)	20
0	MINMK	20	TBHV			
			0 (ft3)	10		

REPEAT SECTION

Database File: 23813ddn.db
 Dataset Pathname: pass5.5
 Presentation Format: micro
 Dataset Creation: Mon Apr 21 11:45:41 2014 by Calc SOC 120430
 Charted by: Depth in Feet scaled 1:240

0	GAMMA RAY (GAPI)	150	ABHV	0	MEL1.5 (Ohm-m)	20
6	CALIPER (in)	16	10 (ft3)	0 0	MEL2.0 (Ohm-m)	20
0	MINMK	20	TBHV			
			0 (ft3)	10		





Calibration Report

Database File: 23813ddn.db
 Dataset Pathname: pass6.2
 Dataset Creation: Mon Apr 21 11:41:33 2014 by Calc SOC 120430

MICRO Calibration Report

Serial Number:	070910	
Tool Model:	ProbeN	
Performed:	Fri Mar 07 13:40:05 2014	
Caliper Calibration:	Gain=4.208	Offset=1.270
References	Low Cal	High Cal
Readings	7.800	15.000
	1.552	3.263
1.5" Calibration:	Gain=22.000	Offset=0.200
References	Low Cal	High Cal
Readings	0.000	20.000
	0.001	1.229
2" Calibration:	Gain=58.000	Offset=-1.000
References	Low Cal	High Cal
Readings	0.000	20.000
	0.004	1.057

Gamma Ray Calibration Report

Serial Number:	070559	
Tool Model:	OPEN_GR	
Performed:	Mon Mar 24 02:01:13 2014	
Calibrator Value:	1.0	GAPI
Background Reading:	0.0	cps
Calibrator Reading:	1.0	cps
Sensitivity:	0.2200	GAPI/cps