



**COMPLETION
& PRODUCTION
SERVICES CO.**

**MICRO
LOG**

Company MAI OIL OPERATIONS, INC.
Well STULL #1
Field ROLAND EAST
County RUSH
State KANSAS

Company MAI OIL OPERATIONS, INC.
Well STULL #1
Field ROLAND EAST
County RUSH State KANSAS

Location: API # : 15-165-22057-0000
870' FNL & 1990' FWL
NW - SE - NE - NW
SEC 19 TWP 16S RGE 19W
Permanent Datum GROUND LEVEL Elevation 2123
Log Measured From KELLY BUSHING 8' A.G.L.
Drilling Measured From KELLY BUSHING
Other Services
CDL/CNL
DIL/SON
Elevation
K.B. 2131
D.F. 2129
G.L. 2123

Date	4/10/14		
Run Number	TWO		
Depth Driller	3921		
Depth Logger	3923		
Bottom Logged Interval	3905		
Top Log Interval	3100		
Casing Driller	8 5/8" @ 1103		
Casing Logger	1103		
Bit Size	7 7/8"		
Type Fluid in Hole	CHEMICAL MUD	CHLORIDES 7400 PPM	
Density / Viscosity	9.2/58		
pH / Fluid Loss	11.5/8.0		
Source of Sample	FLOWLINE		
Rm @ Meas. Temp	.60 @ 79F		
Rmt @ Meas. Temp	.45 @ 79F		
Rmc @ Meas. Temp	.72 @ 79F		
Source of Rmf / Rmc	MEASUREMENT		
Rm @ BHT	.40 @ 116F		
Time Circulation Stopped	2 HOURS		
Time Logger on Bottom			
Maximum Recorded Temperature	116F		
Equipment Number	4010		
Location	HAYS, KANSAS		
Recorded By	JASON CAPPELLUCCI		
Witnessed By	JIM MUSGROVE		

<<< Fold Here >>>

All interpretations are opinions based on inferences from electrical or other measurements and we cannot and do not guarantee the accuracy or correctness of any interpretation, and we shall not, except in the case of gross or willful negligence on our part, be liable or responsible for any loss, costs, damages, or expenses incurred or sustained by anyone resulting from any interpretation made by any of our officers, agents or employees. These interpretations are also subject to our general terms and conditions set out in our current Price Schedule.

Comments

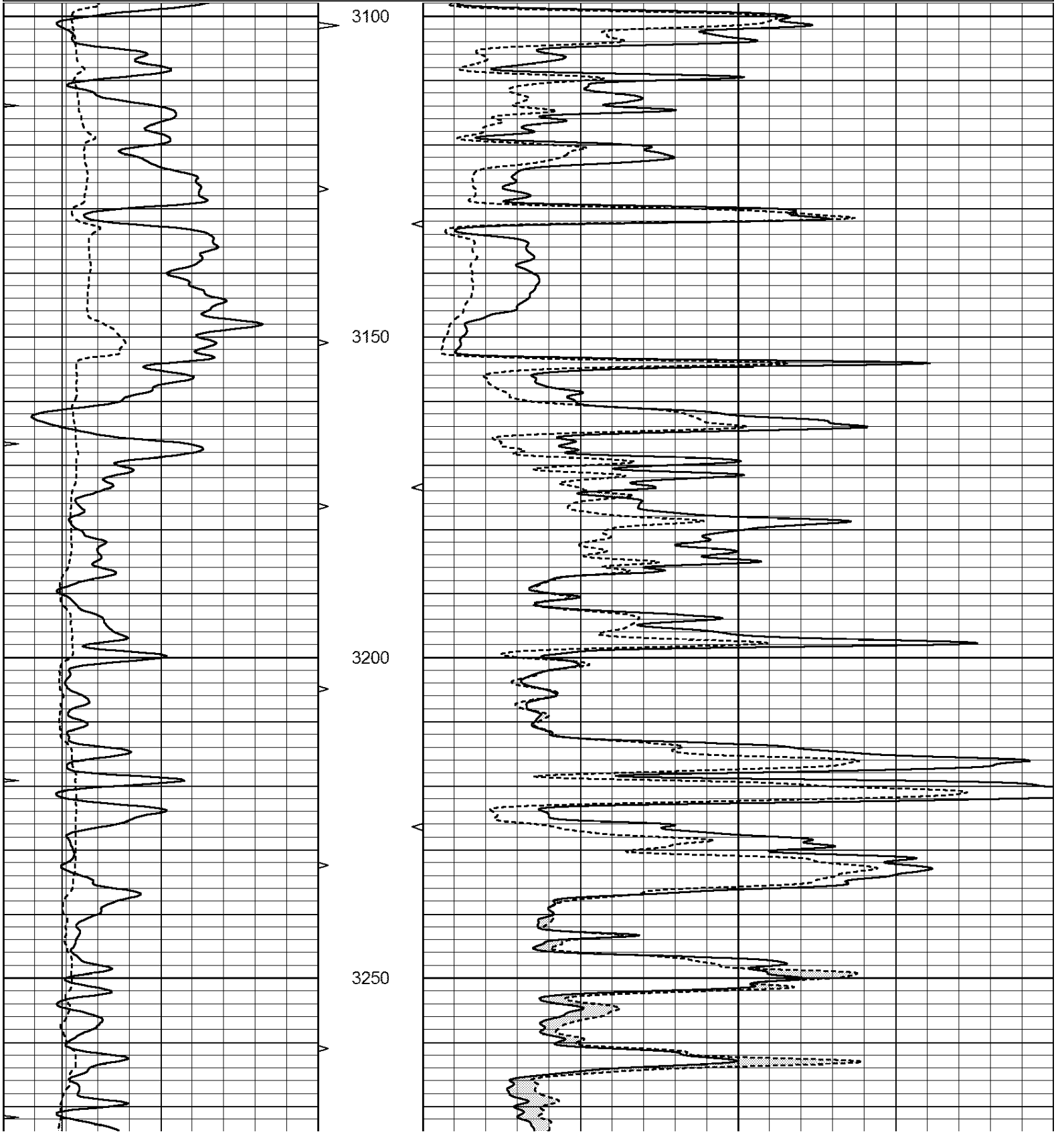
THANK YOU FOR USING NABORS, HAYS, KS. (785) 628-6395
DIRECTIONS:
LIEBENTHAL, KS. - 7 1/2 WEST ON BLKTOP TO RD. 170 - 1 NORTH - 1/2 WEST
SOUTH INTO

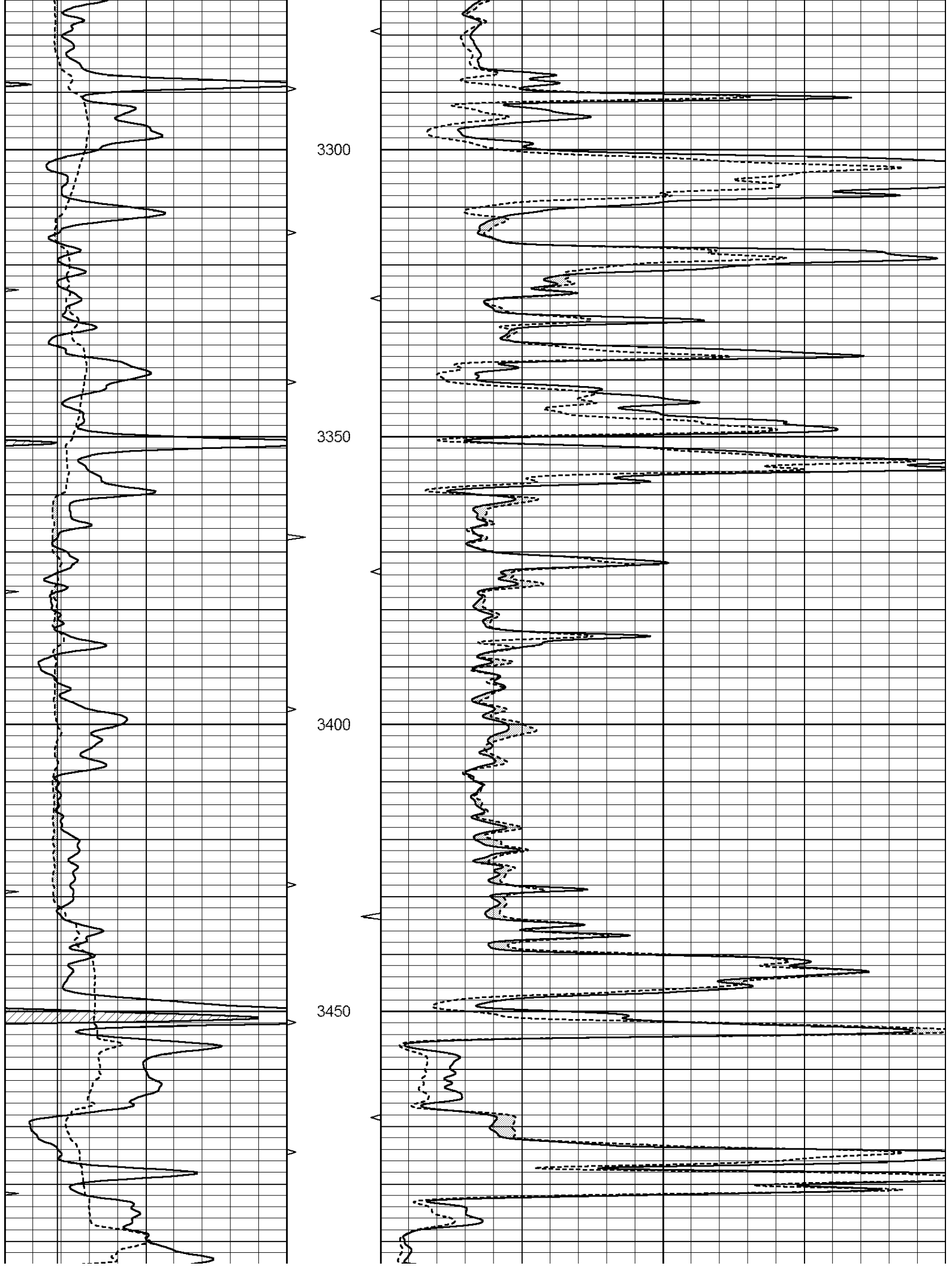


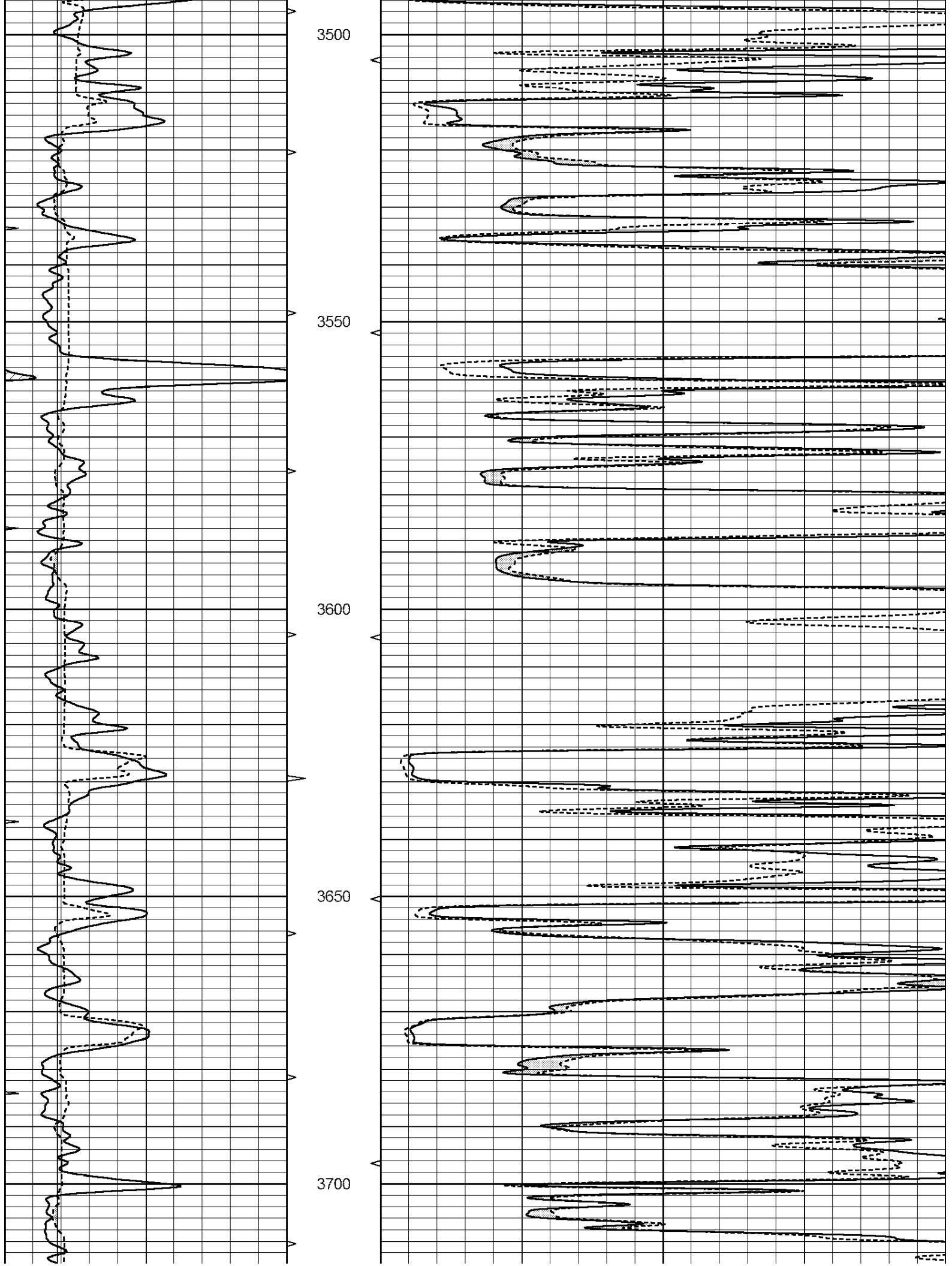
MAIN SECTION

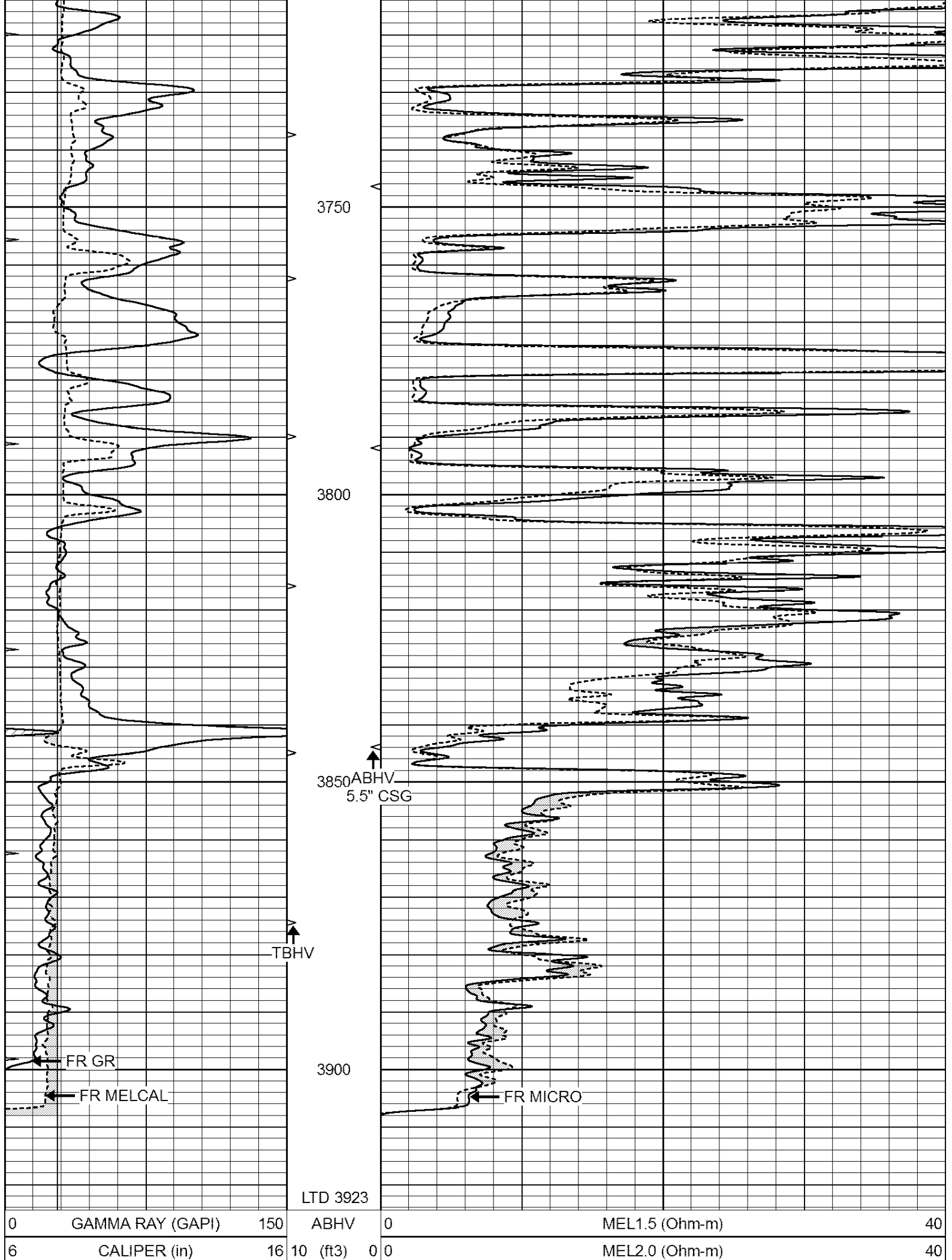
Database File: 24022ddn.db
 Dataset Pathname: pass6.1
 Presentation Format: _micro
 Dataset Creation: Thu Apr 10 15:49:15 2014 by Calc Open-Cased 090629
 Charted by: Depth in Feet scaled 1:240

0	GAMMA RAY (GAPI)	150	ABHV	0	MEL1.5 (Ohm-m)	40
6	CALIPER (in)	16	10 (ft3)	0	MEL2.0 (Ohm-m)	40
0	MINMK	20	TBHV			
			0 (ft3)	10		









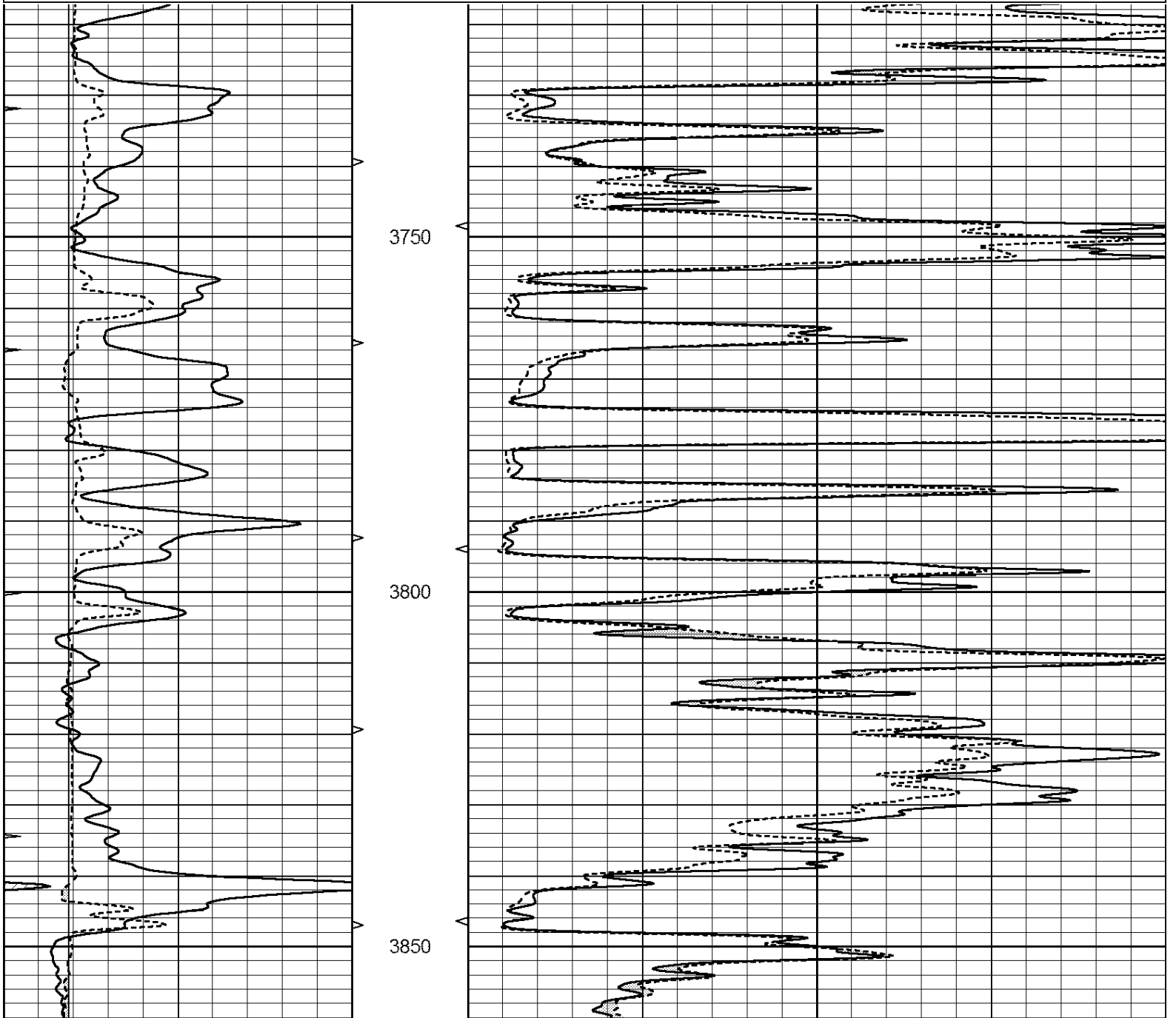
0	MINMK	20	TBHV
			0 (ft3) 10

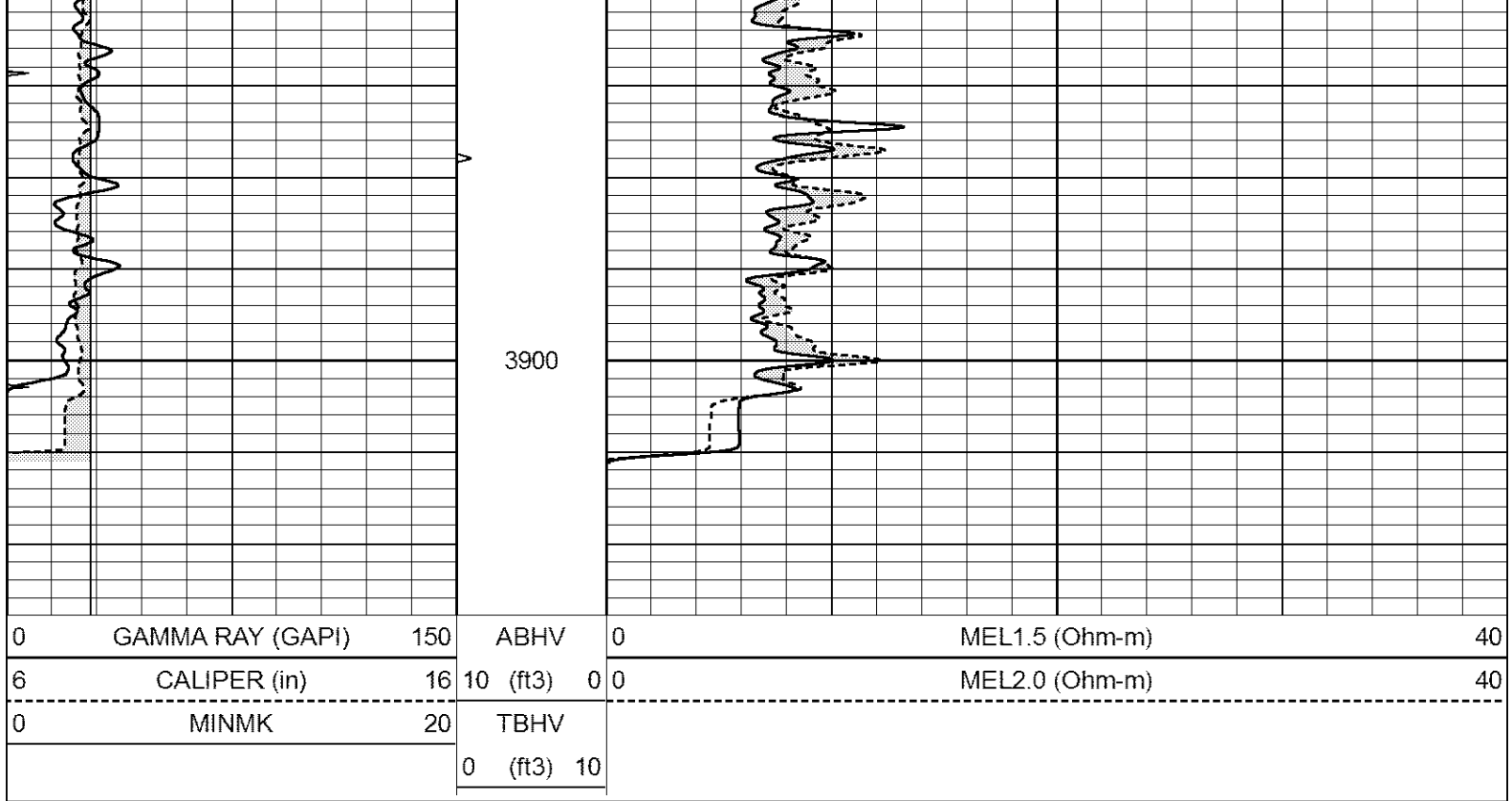


REPEAT SECTION

Database File: 24022ddn.db
 Dataset Pathname: pass5.1
 Presentation Format: _micro
 Dataset Creation: Thu Apr 10 15:42:11 2014 by Calc Open-Cased 090629
 Charted by: Depth in Feet scaled 1:240

0	GAMMA RAY (GAPI)	150	ABHV	0	MEL1.5 (Ohm-m)	40
6	CALIPER (in)	16	10 (ft3)	0	MEL2.0 (Ohm-m)	40
0	MINMK	20	TBHV			
			0 (ft3) 10			





Calibration Report

Database File: 24022ddn.db
 Dataset Pathname: pass5.1
 Dataset Creation: Thu Apr 10 15:42:11 2014 by Calc Open-Cased 090629

MICRO Calibration Report

Serial Number:	MICRO6	
Tool Model:	PROBE	
Performed:	Fri Mar 14 21:54:54 2014	
Caliper Calibration:	Gain=5.542	Offset=-0.820
References	Low Cal	High Cal
Readings	8.000	14.000
	1.431	2.513
1.5" Calibration:	Gain=38.075	Offset=0.000
References	Low Cal	High Cal
Readings	0.000	20.000
	0.004	1.196
2" Calibration:	Gain=44.000	Offset=-0.600
References	Low Cal	High Cal
Readings	0.000	20.000
	0.006	0.913

Gamma Ray Calibration Report

Serial Number:	GR6	
Tool Model:	OPEN	
Performed:	Fri Nov 29 08:34:37 2013	
Calibrator Value:	150.0	GAPI
Background Reading:	0.0	cps
Calibrator Reading:	276.0	cps

Sensitivity:

0.6035

GAPI/cps