



**COMPLETION
& PRODUCTION
SERVICES CO.**

**SONIC
LOG**

Company MAI OIL OPERATIONS, INC.
Well STULL #1
Field ROLAND EAST
County RUSH
State KANSAS

Company MAI OIL OPERATIONS, INC.
Well STULL #1
Field ROLAND EAST
County RUSH State KANSAS

Location: API # : 15-165-22057-0000
SEC 19 TWP 16S RGE 19W
870' FNL & 1990' FWL
NW - SE - NE - NW
Permanent Datum GROUND LEVEL Elevation 2123
Log Measured From KELLY BUSHING 8' A.G.L.
Drilling Measured From KELLY BUSHING
Other Services
CDL/CNL
DIL/MEL
Elevation
K.B. 2131
D.F. 2129
G.L. 2123

Date	4/10/14		
Run Number	TWO		
Depth Driller	3921		
Depth Logger	3923		
Bottom Logged Interval	3913		
Top Log Interval	1100		
Casing Driller	8 5/8" @ 1103		
Casing Logger	1103		
Bit Size	7 7/8"		
Type Fluid in Hole	CHEMICAL MUD	CHLORIDES 7400 PPM	
Density / Viscosity	9.2/58		
pH / Fluid Loss	11.5/8.0		
Source of Sample	FLOWLINE		
Rm @ Meas. Temp	.60 @ 79F		
Rmt @ Meas. Temp	.45 @ 79F		
Rmc @ Meas. Temp	.72 @ 79F		
Source of Rmf / Rmc	MEASUREMENT		
Rm @ BHT	.40 @ 116F		
Time Circulation Stopped	2 HOURS		
Time Logger on Bottom			
Maximum Recorded Temperature	116F		
Equipment Number	4010		
Location	HAYS, KANSAS		
Recorded By	JASON CAPPELLUCCI		
Witnessed By	JIM MUSGROVE		

<<< Fold Here >>>

All interpretations are opinions based on inferences from electrical or other measurements and we cannot and do not guarantee the accuracy or correctness of any interpretation, and we shall not, except in the case of gross or willful negligence on our part, be liable or responsible for any loss, costs, damages, or expenses incurred or sustained by anyone resulting from any interpretation made by any of our officers, agents or employees. These interpretations are also subject to our general terms and conditions set out in our current Price Schedule.

Comments

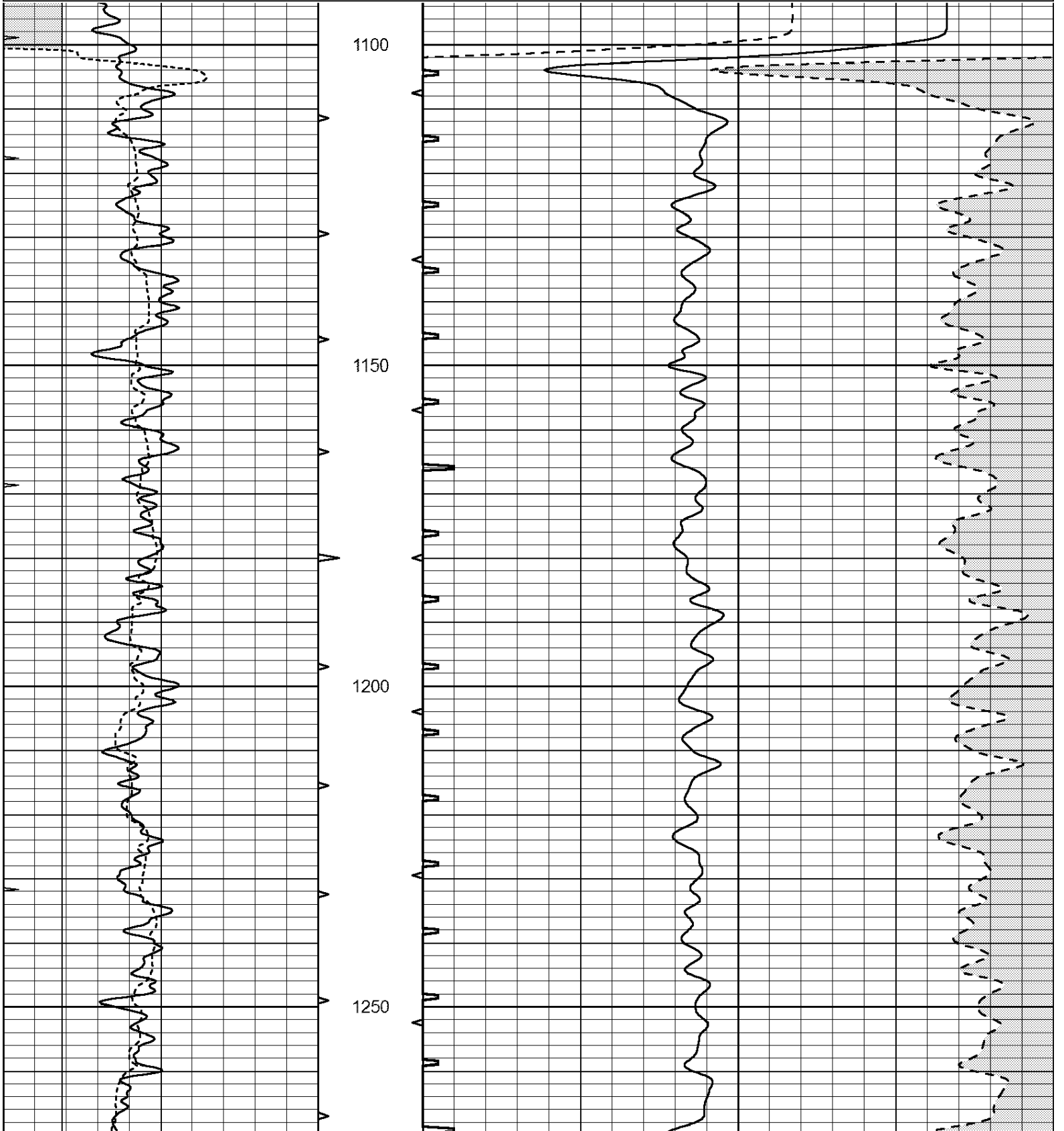
THANK YOU FOR USING NABORS, HAYS, KS. (785) 628-6395
DIRECTIONS:
LIEBENTHAL, KS. - 7 1/2 WEST ON BLKTOP TO RD. 170 - 1 NORTH - 1/2 WEST
SOUTH INTO

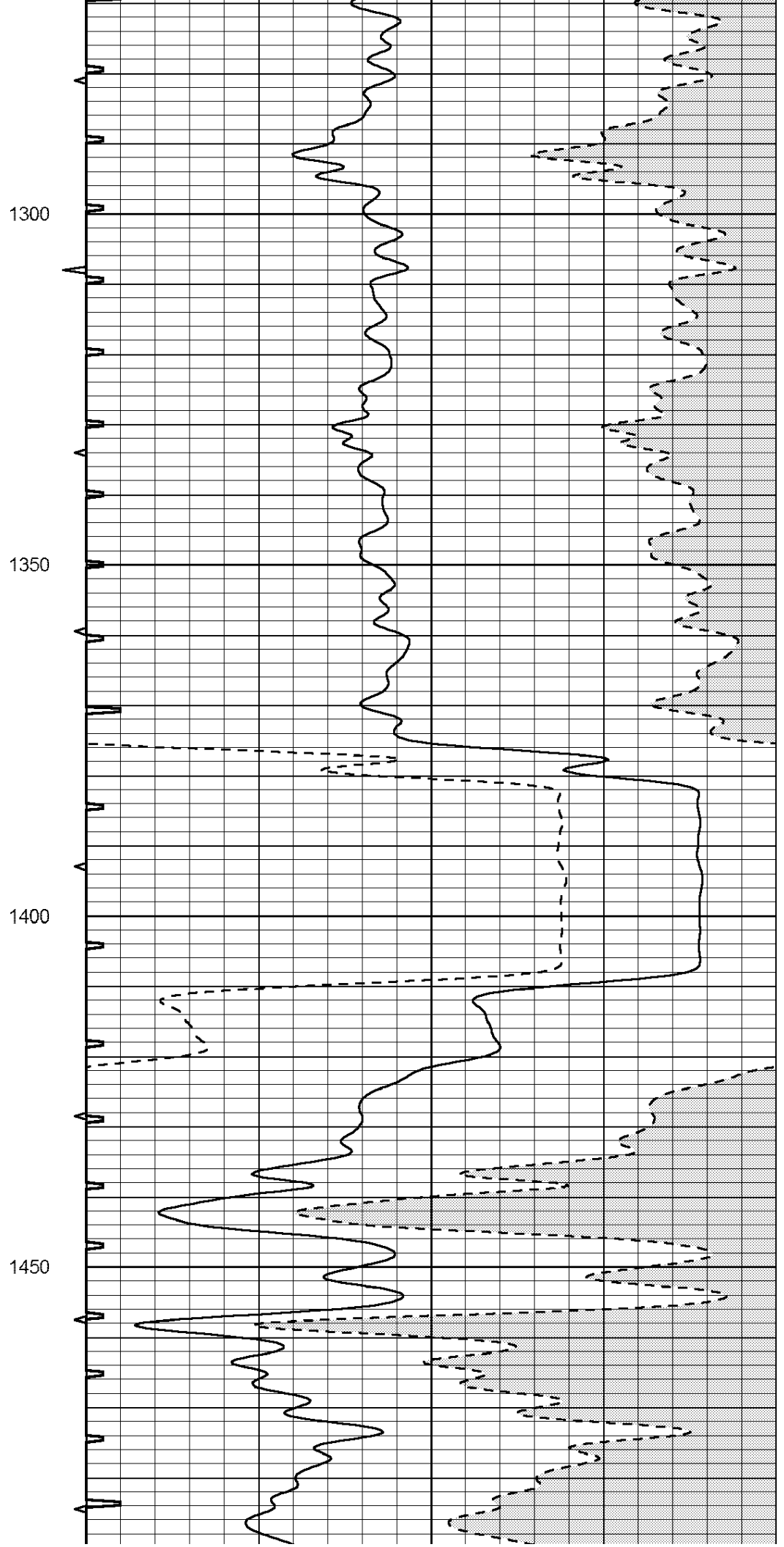
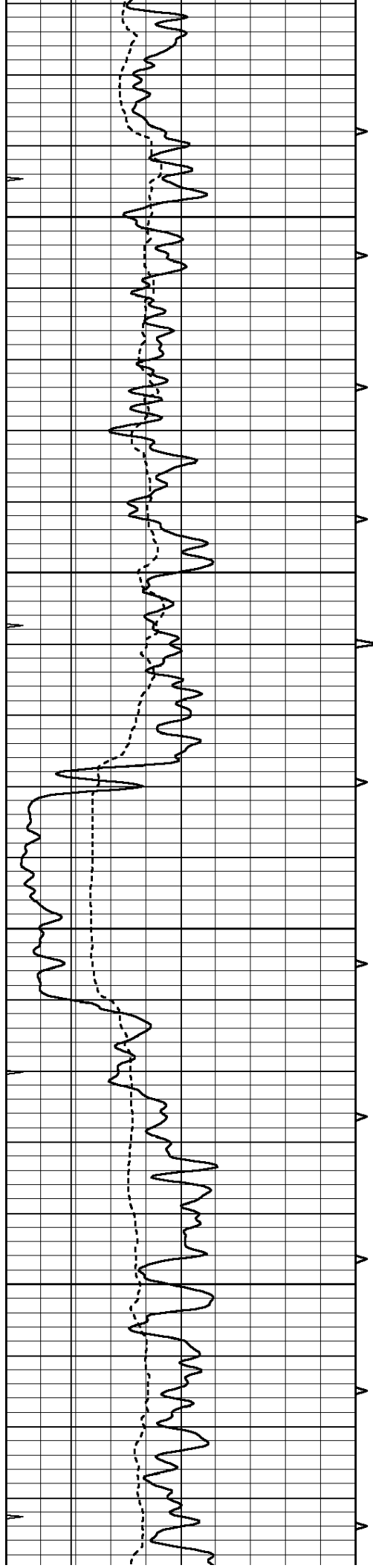


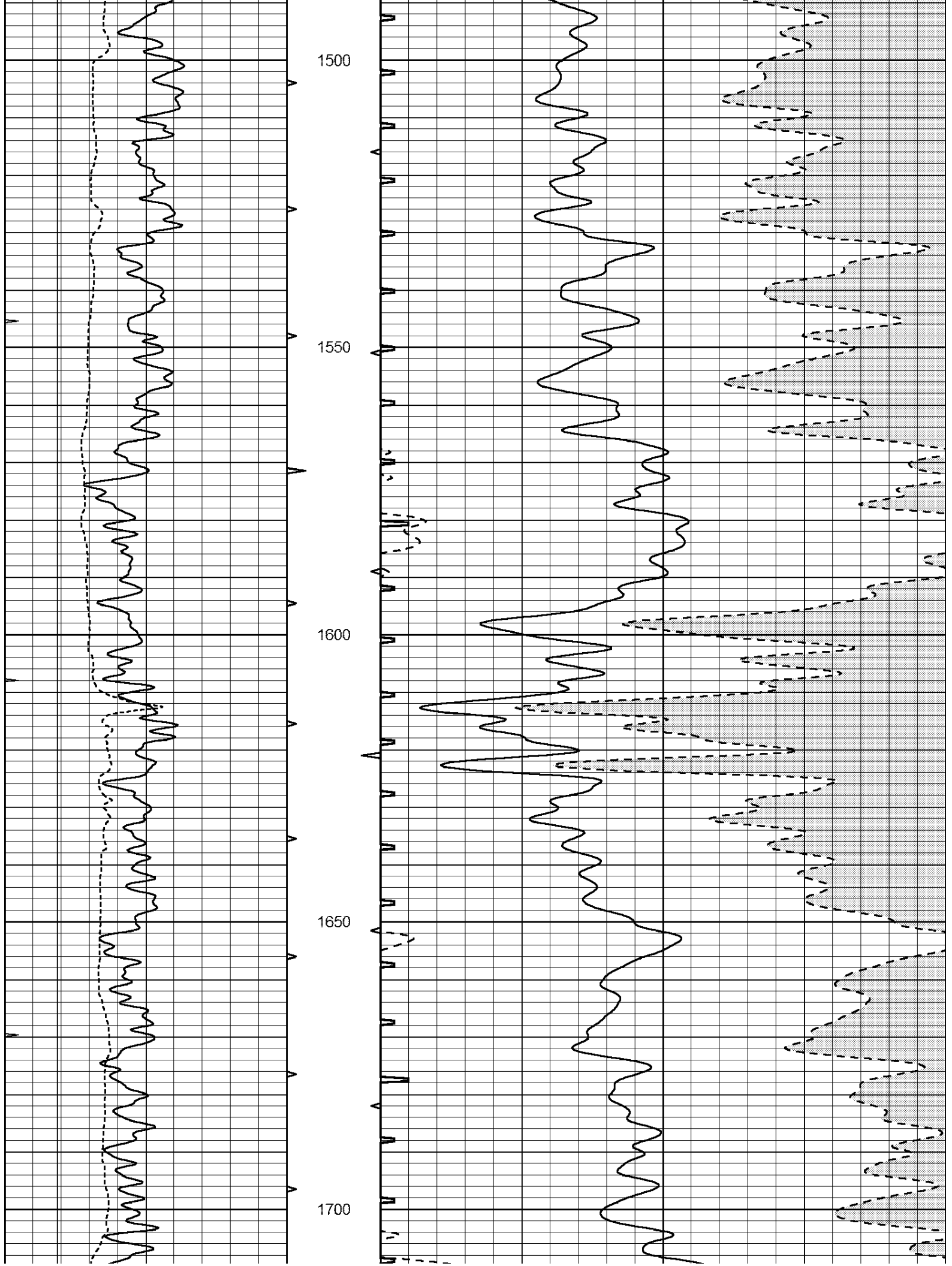
REPEAT SECTION

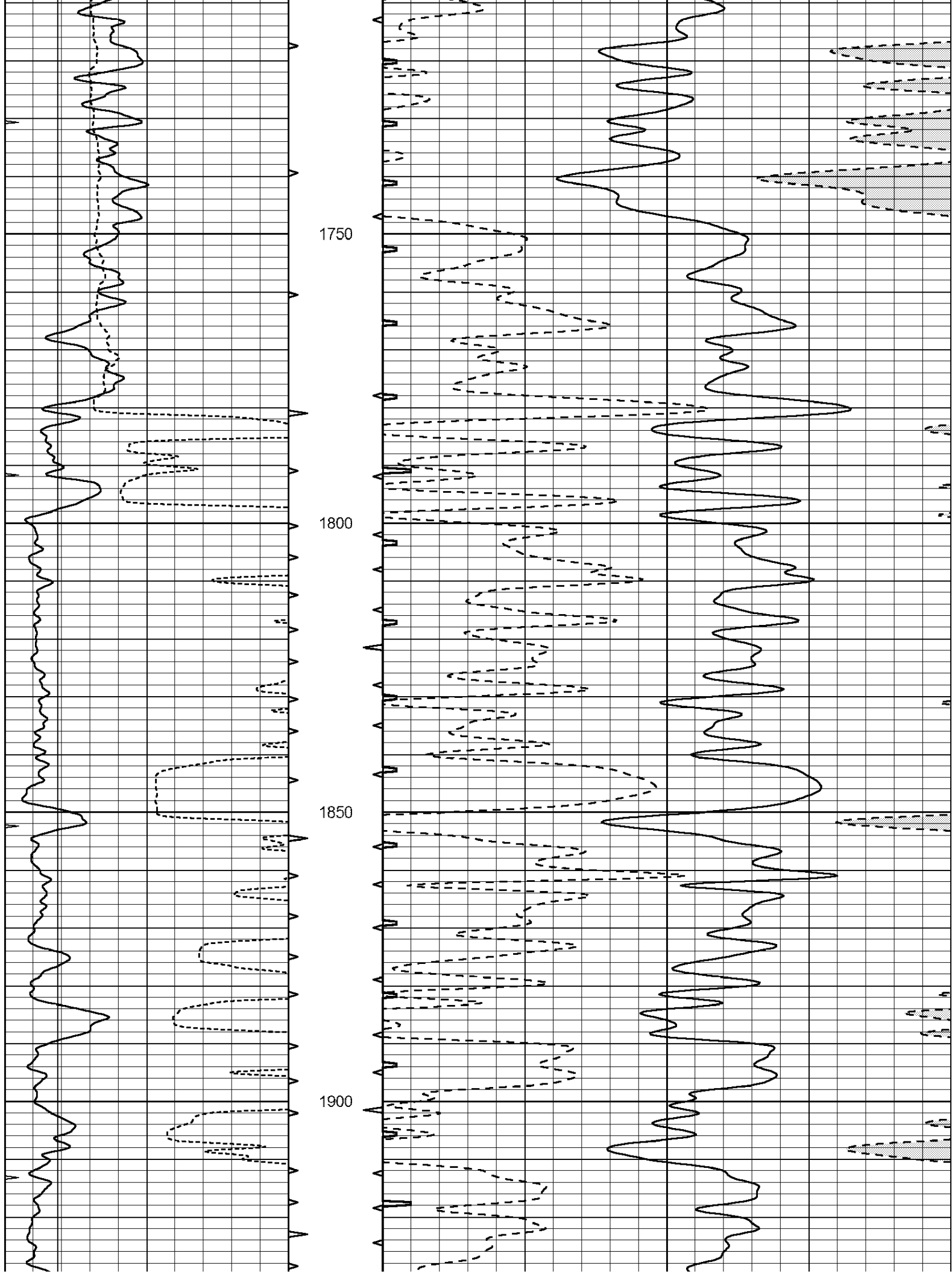
Database File: 24022ddn.db
 Dataset Pathname: pass6.2
 Presentation Format: _slt
 Dataset Creation: Thu Apr 10 16:18:03 2014 by Calc Open-Cased 090629
 Charted by: Depth in Feet scaled 1:240

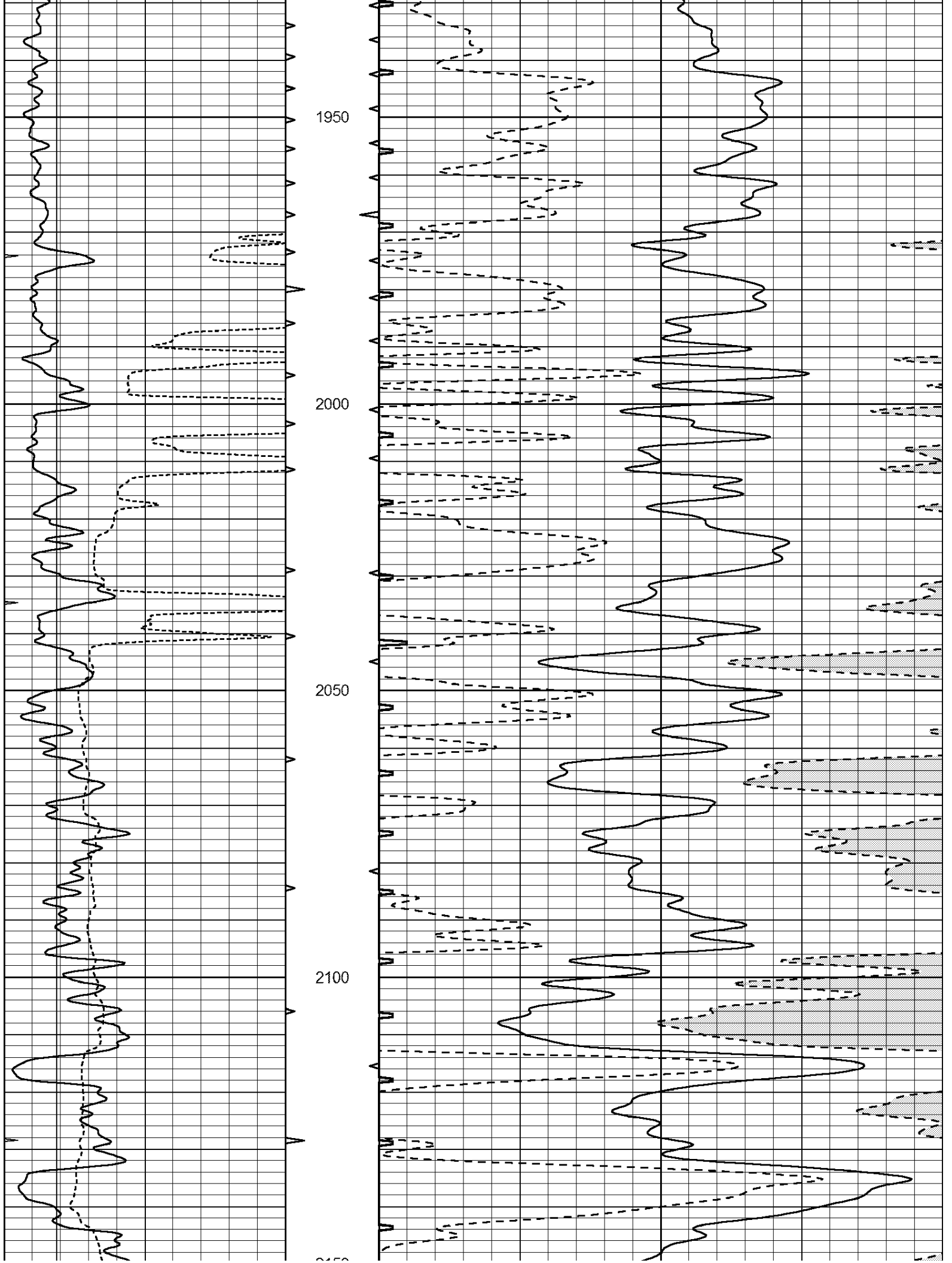
0	GAMMA RAY (GAPI)	150	ABHV	140	DELTA TIME (usec/ft)	40
6	CALIPER (in)	16	10 (ft3)	0	30	SONIC POROSITY (pu)
0	MINMK	20	TBHV	0	ITT (msec)	20
			0 (ft3)	10		

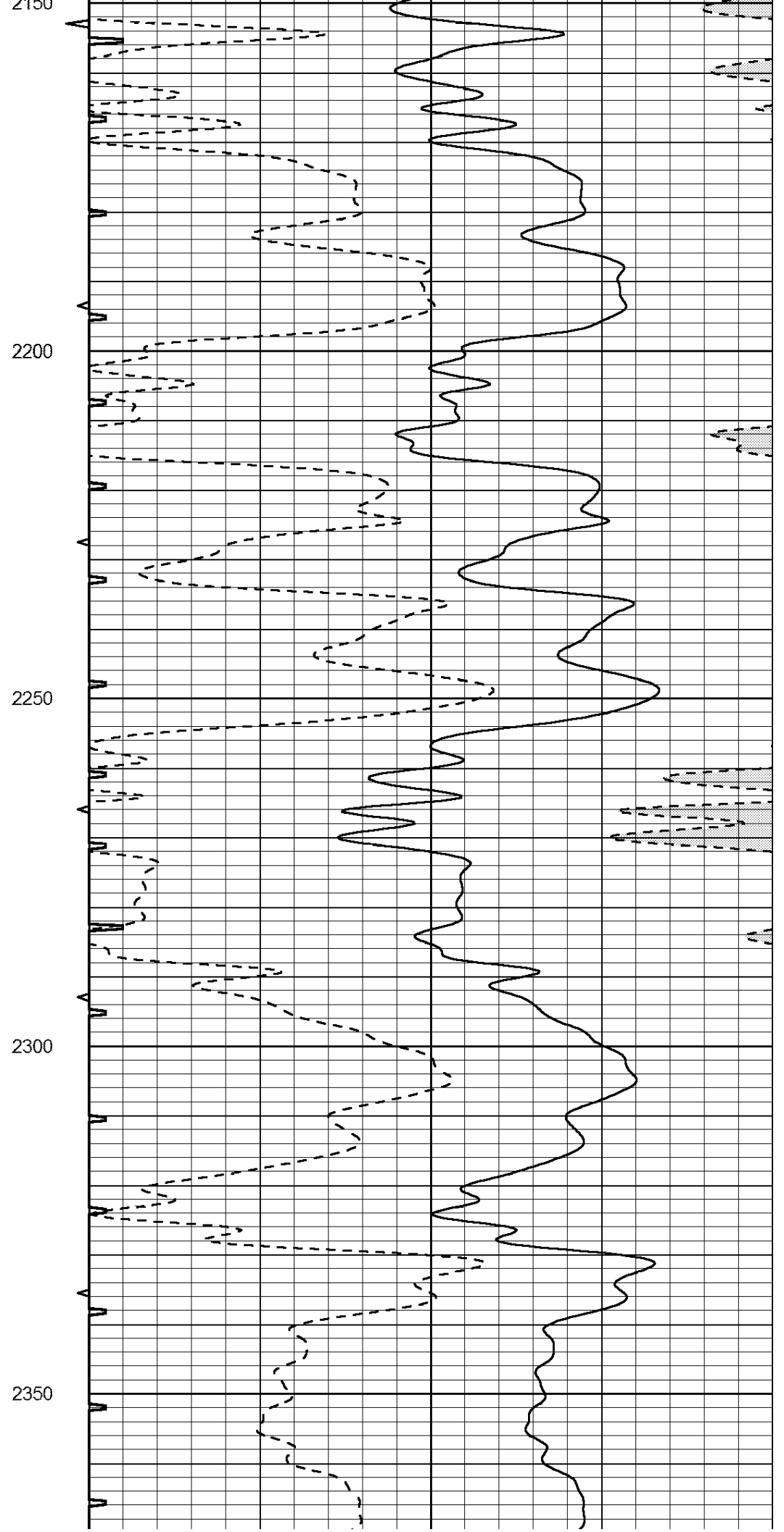
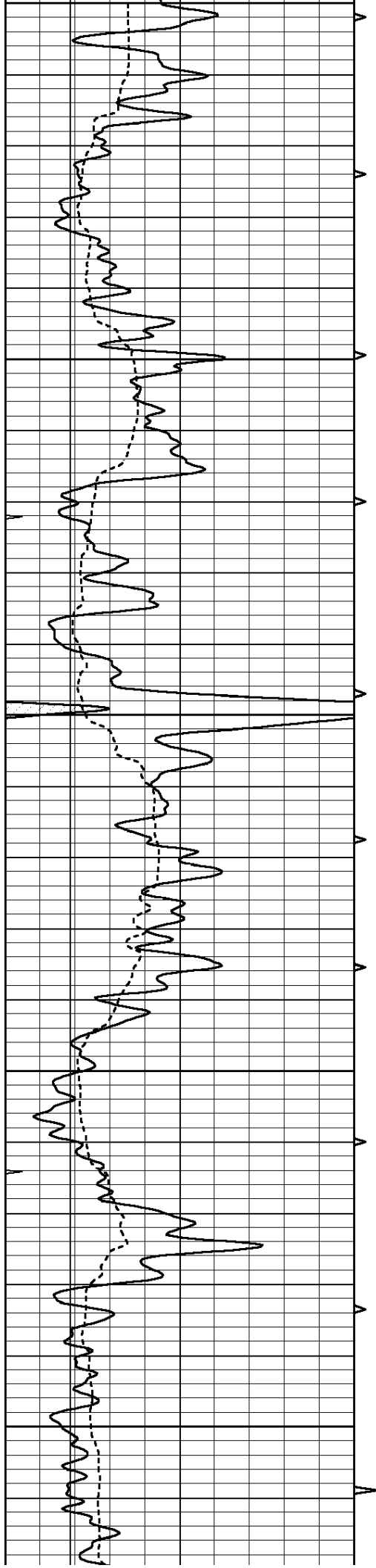


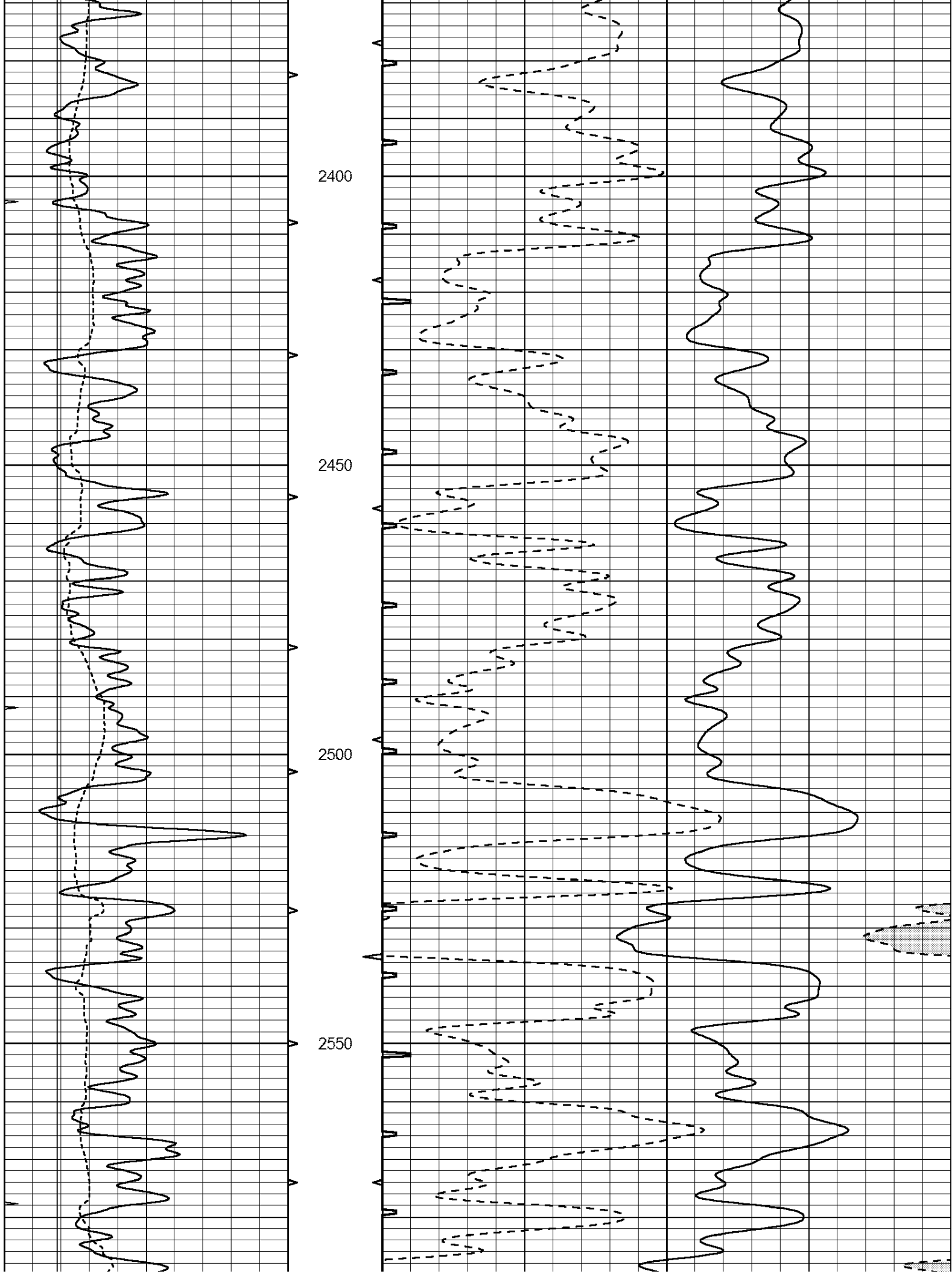


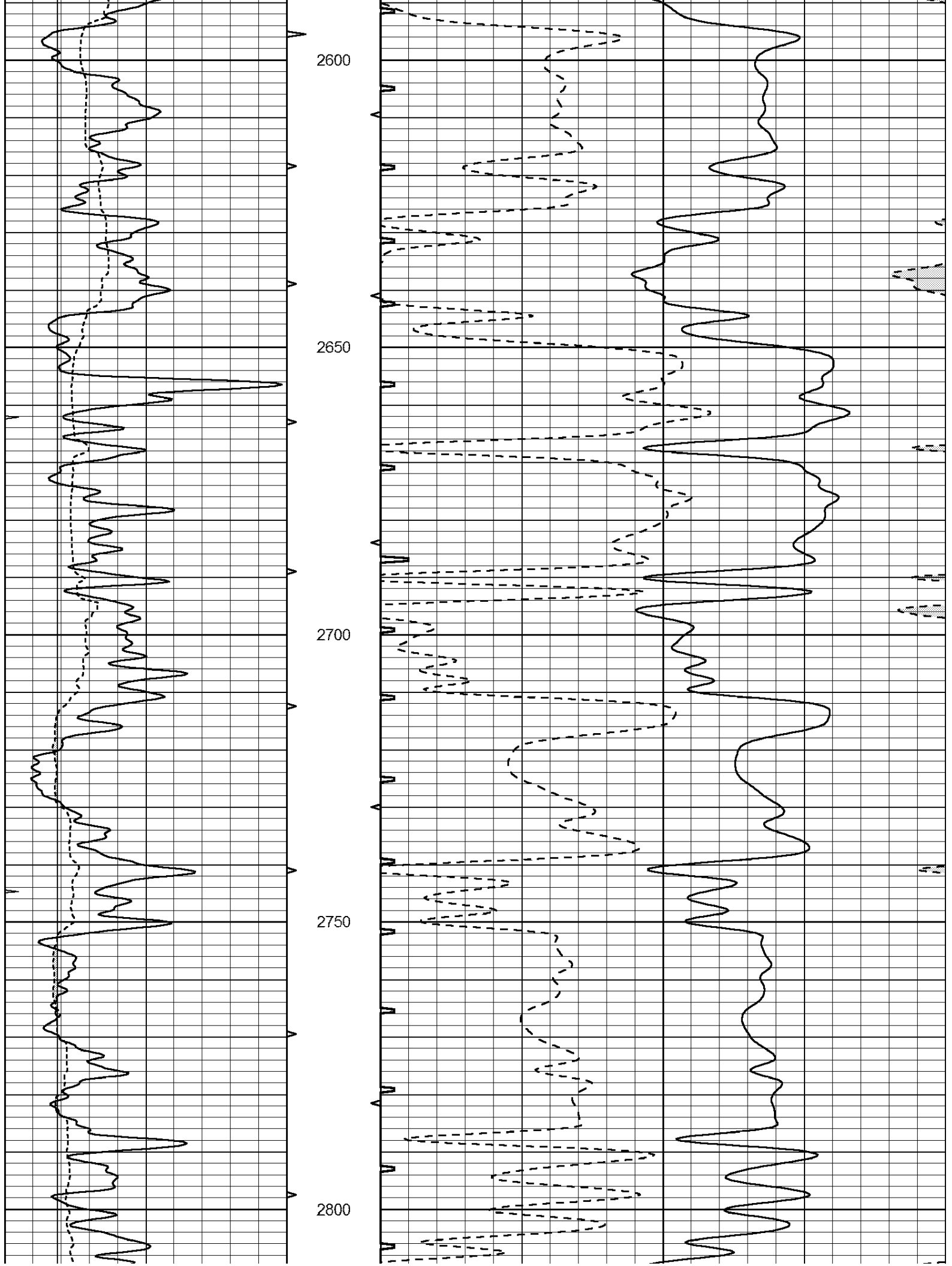


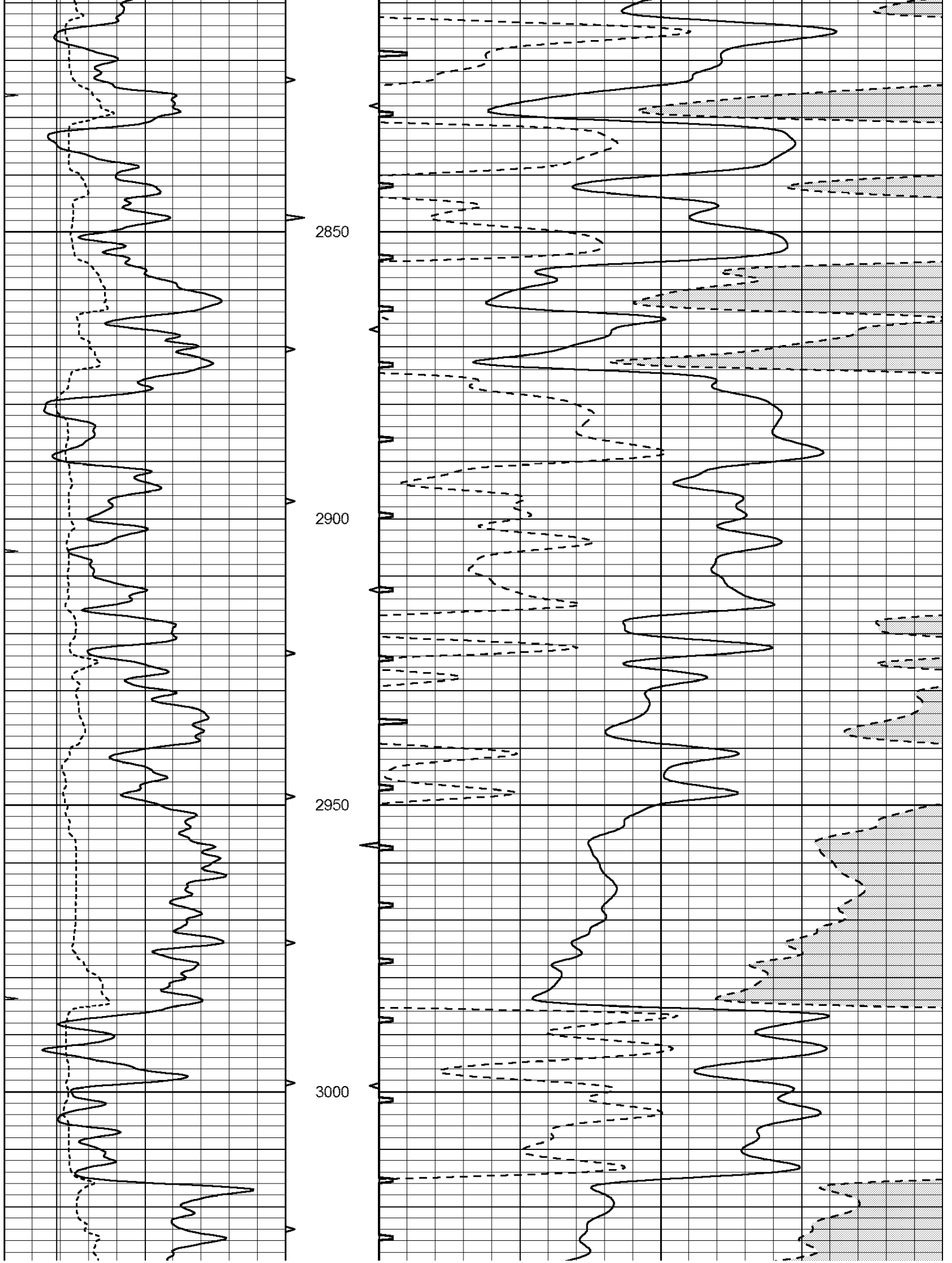


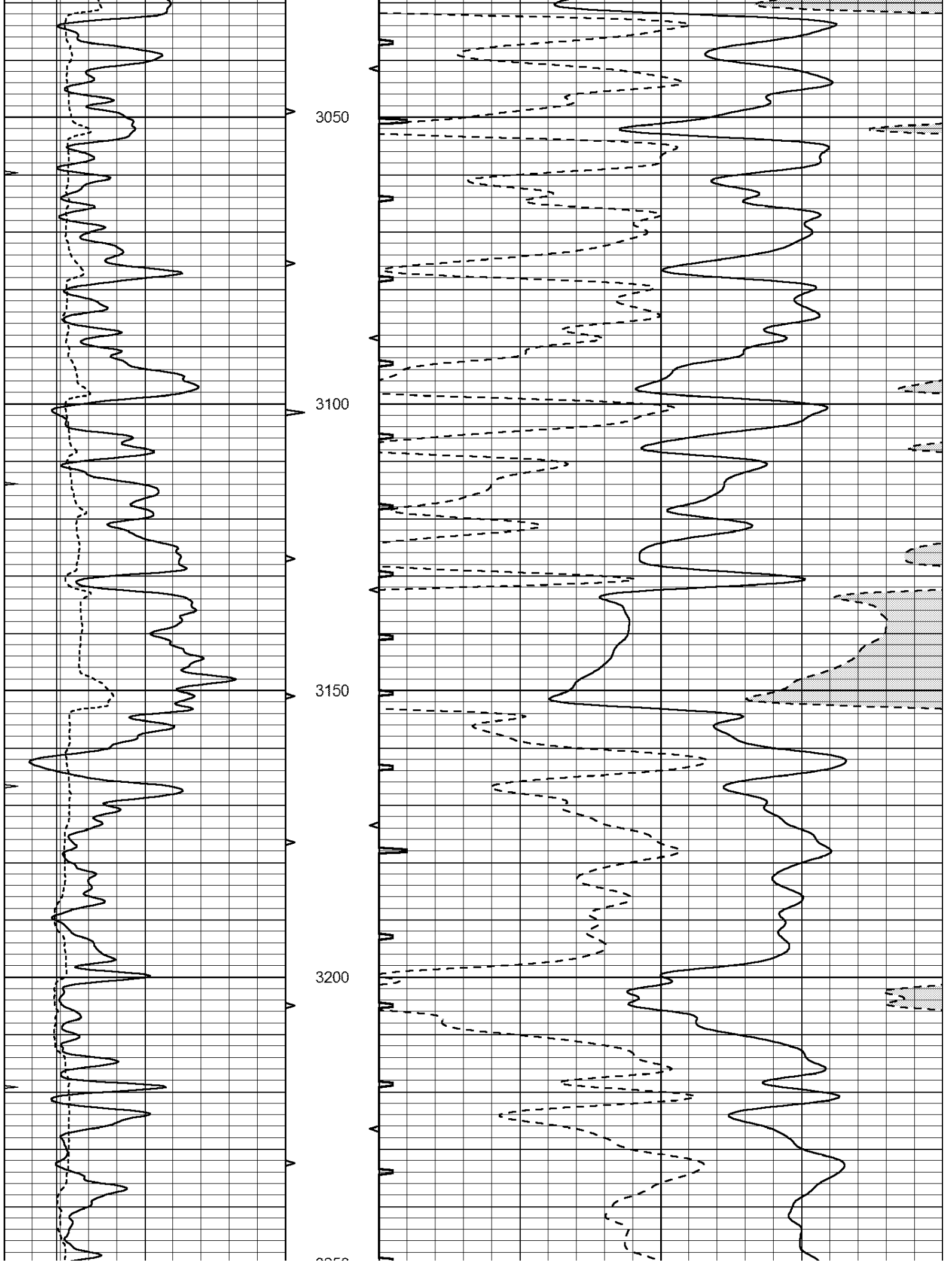


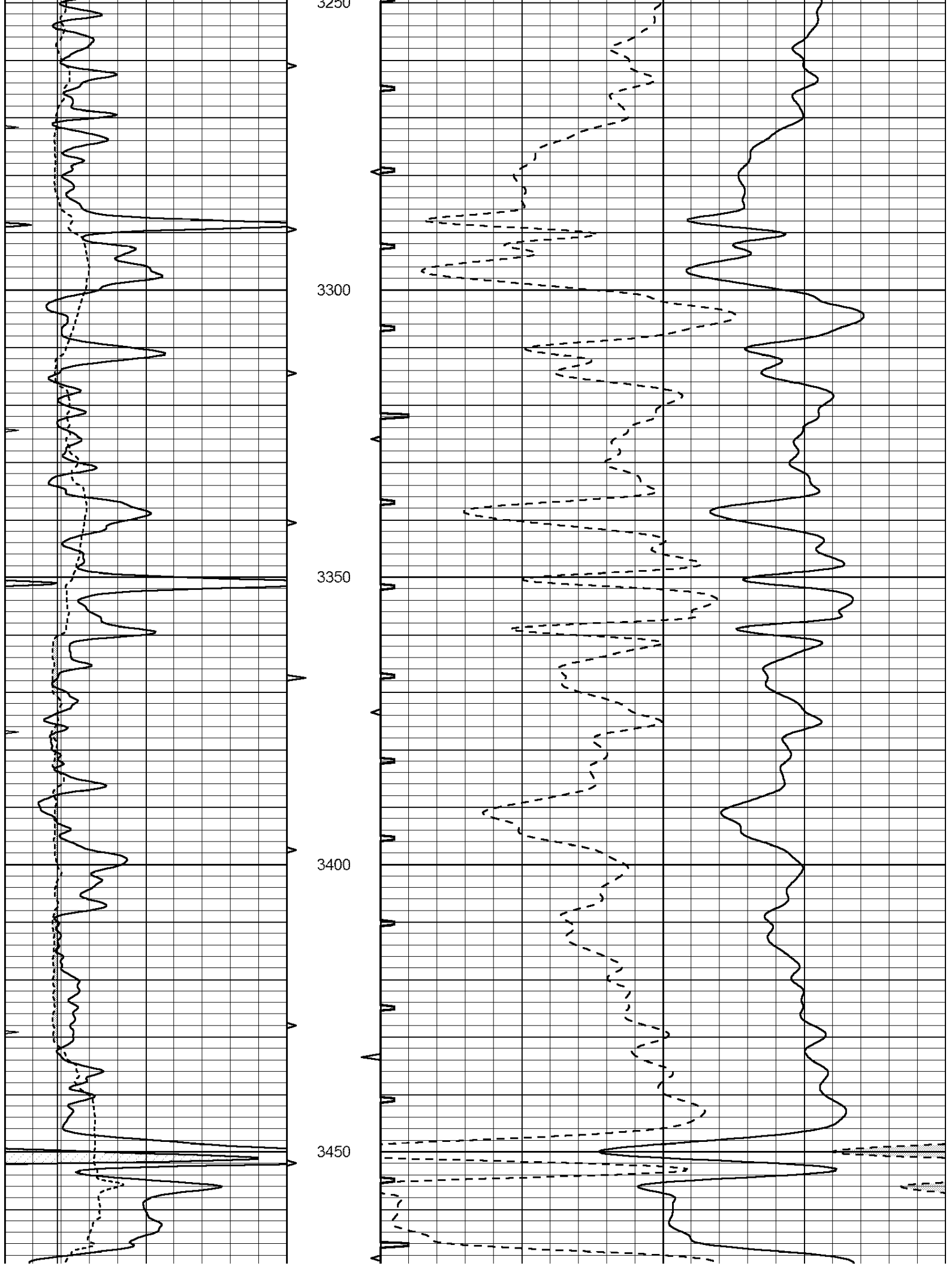


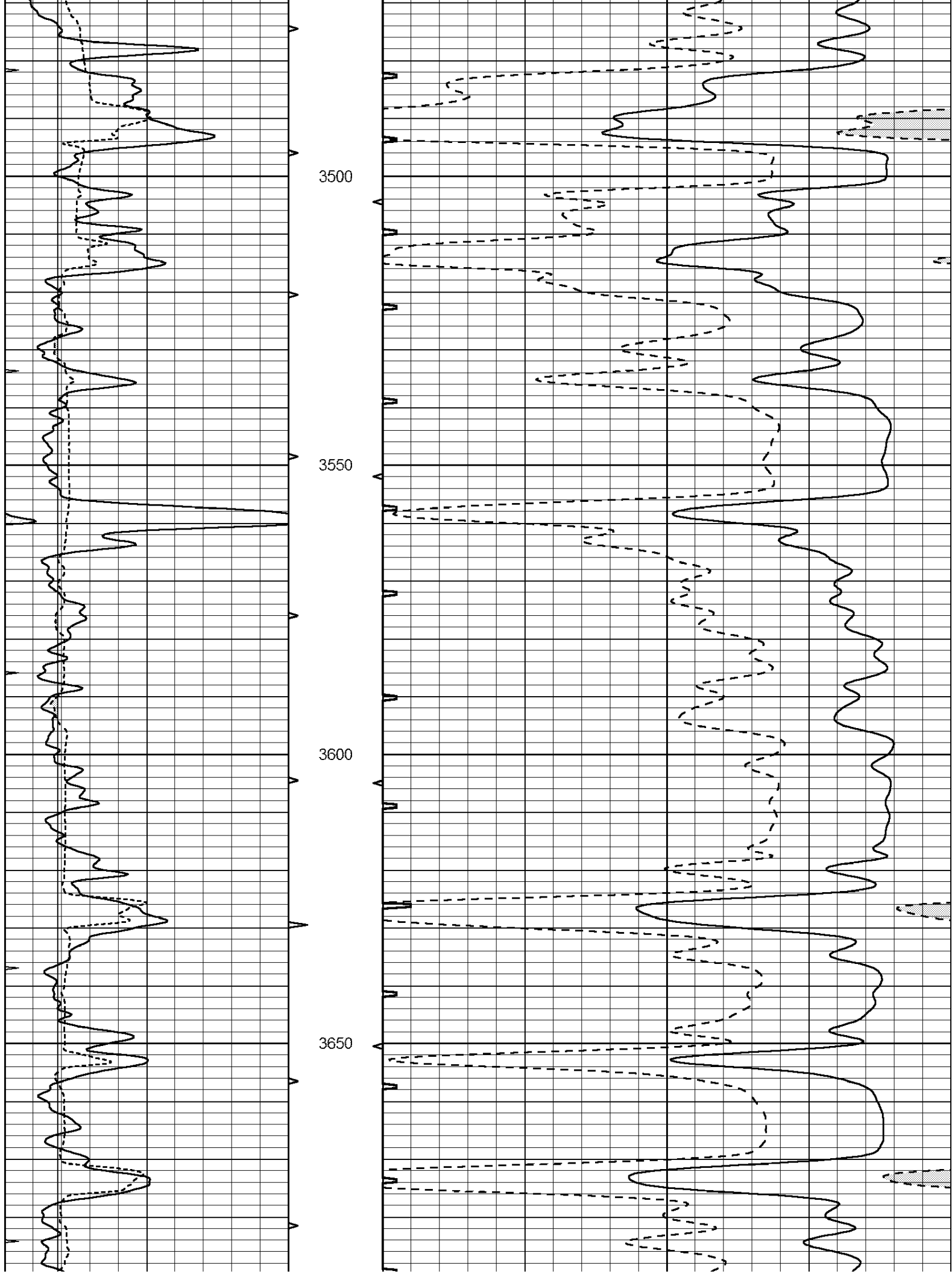


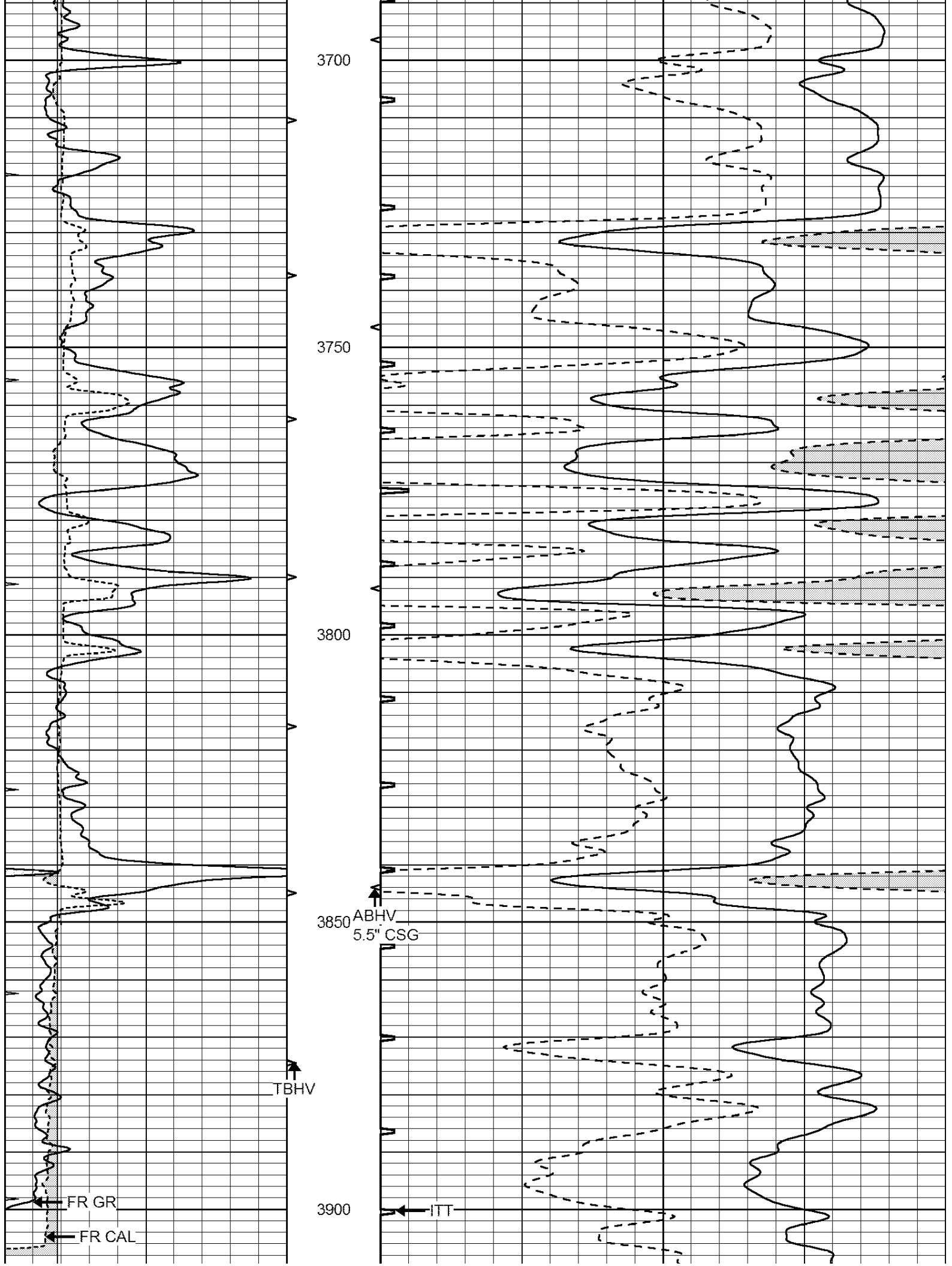


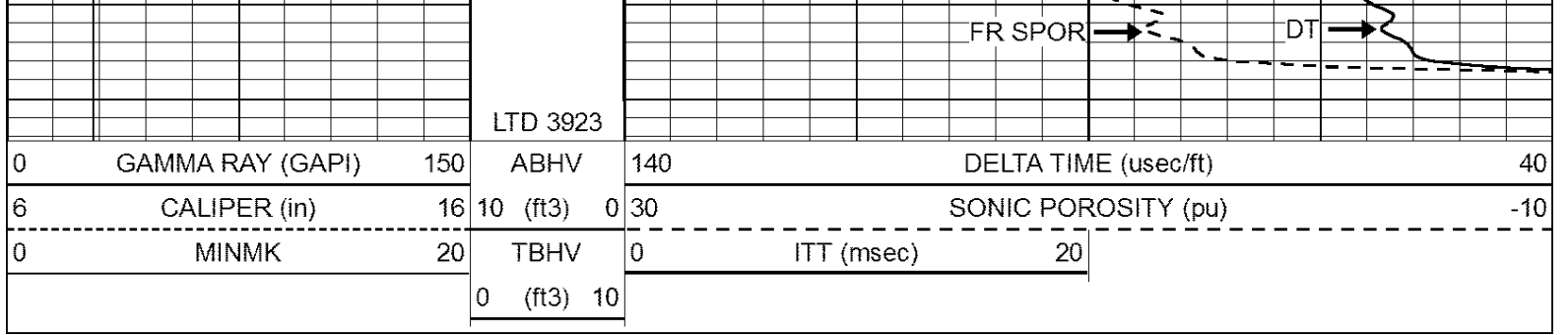












REPEAT SECTION

Database File: 24022ddn.db
 Dataset Pathname: pass5.1
 Presentation Format: _slt
 Dataset Creation: Thu Apr 10 15:42:11 2014 by Calc Open-Cased 090629
 Charted by: Depth in Feet scaled 1:240

