



**COMPLETION  
& PRODUCTION  
SERVICES CO.**

**MICRO  
LOG**

Company SIROKY OIL MANAGEMENT  
Well FISHGRAB #1  
Field SAWYER  
County BARBER  
State KANSAS

Company SIROKY OIL MANAGEMENT  
Well FISHGRAB #1  
Field SAWYER  
County BARBER  
State KANSAS

Location: API # : 15-007-24160-0000  
330' FNL & 230' FWL  
SEC 2 TWP 30S RGE 13W  
Permanent Datum GROUND LEVEL Elevation 1801  
Log Measured From KELLY BUSHING 8' A.G.L.  
Drilling Measured From KELLY BUSHING  
Other Services CDL/CNL DIL  
Elevation K.B. 1809 D.F. 1807 G.L. 1801

Date	4/25/14		
Run Number	TWO		
Depth Driller	4670		
Depth Logger	4673		
Bottom Logged Interval	4671		
Top Log Interval	3500		
Casing Driller	8 5/8" @ 225		
Casing Logger	220		
Bit Size	7 7/8"		
Type Fluid in Hole	CHEMICAL MUD	CHLORIDES 2200 PPM	
Density / Viscosity	8.8/45		
pH / Fluid Loss	9.5/8.8		
Source of Sample	FLOWLINE		
Rm @ Meas. Temp	1.1 @ 72F		
Rmt @ Meas. Temp	.82 @ 72F		
Rmc @ Meas. Temp	1.3 @ 72F		
Source of Rmf / Rmc	MEASUREMENT		
Rm @ BHT	.64 @ 122F		
Time Circulation Stopped	2 HOURS		
Time Logger on Bottom			
Maximum Recorded Temperature	122F		
Equipment Number	4010		
Location	HAYS, KANSAS		
Recorded By	JASON CAPPELLUCCI		
Witnessed By	SONJA McDANEL		

<<< Fold Here >>>

All interpretations are opinions based on inferences from electrical or other measurements and we cannot and do not guarantee the accuracy or correctness of any interpretation, and we shall not, except in the case of gross or willful negligence on our part, be liable or responsible for any loss, costs, damages, or expenses incurred or sustained by anyone resulting from any interpretation made by any of our officers, agents or employees. These interpretations are also subject to our general terms and conditions set out in our current Price Schedule.

**Comments**

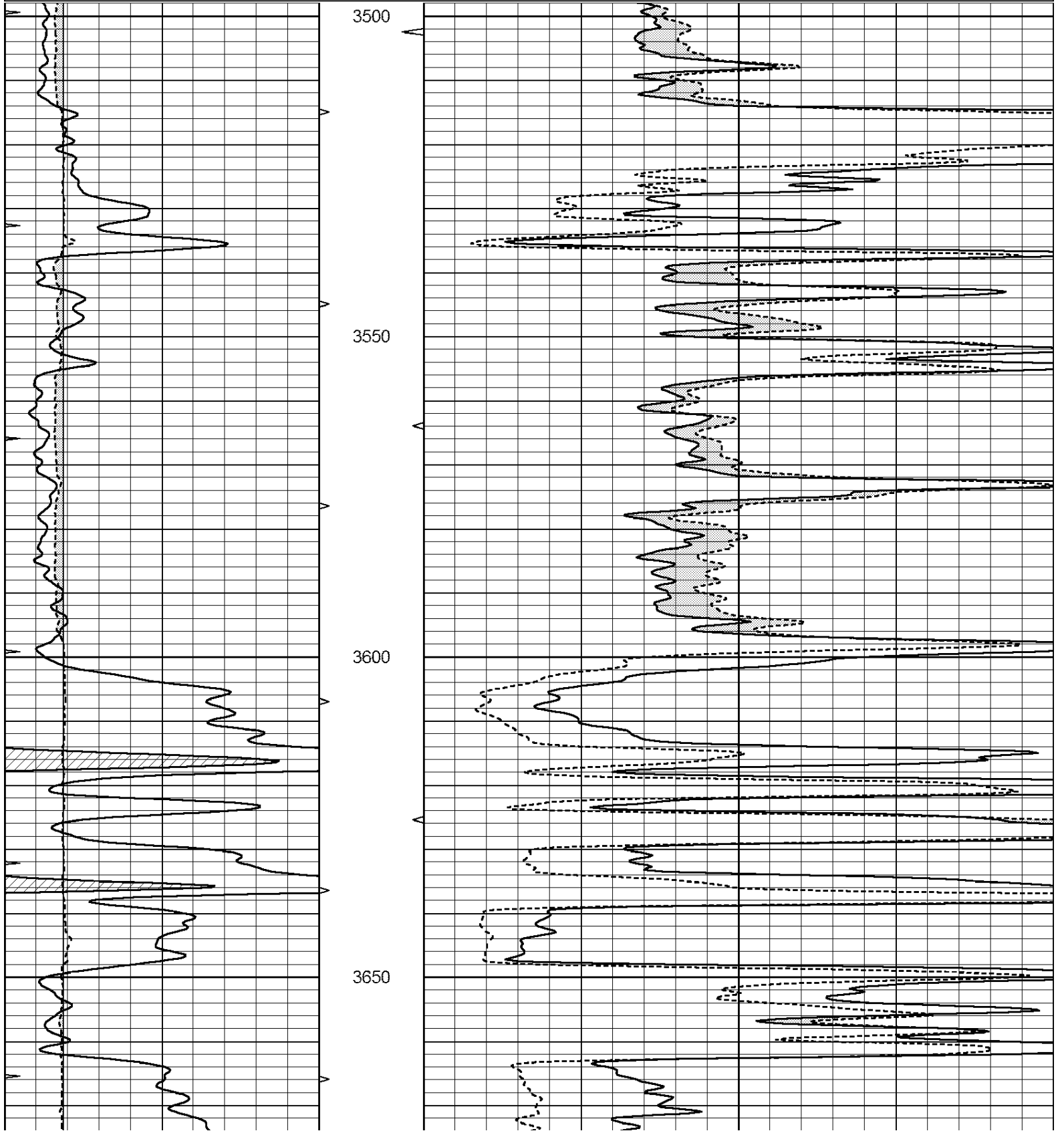
THANK YOU FOR USING NABORS, HAYS, KS. (785) 628-6395  
DIRECTIONS:  
SAWYER, KS. - 1 MILE SOUTH - 1 1/4 WEST - 1 MILE SOUTH INTO

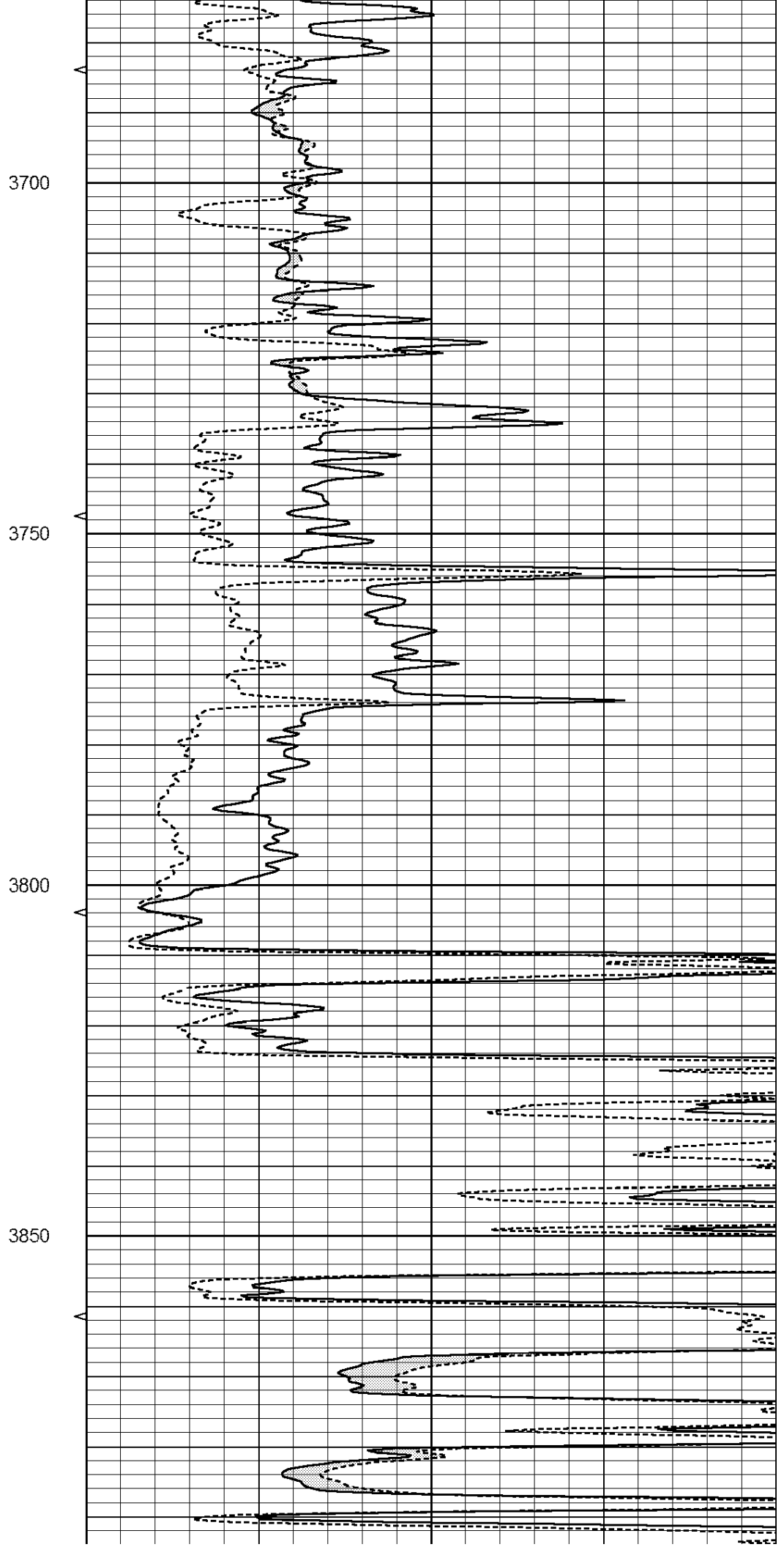
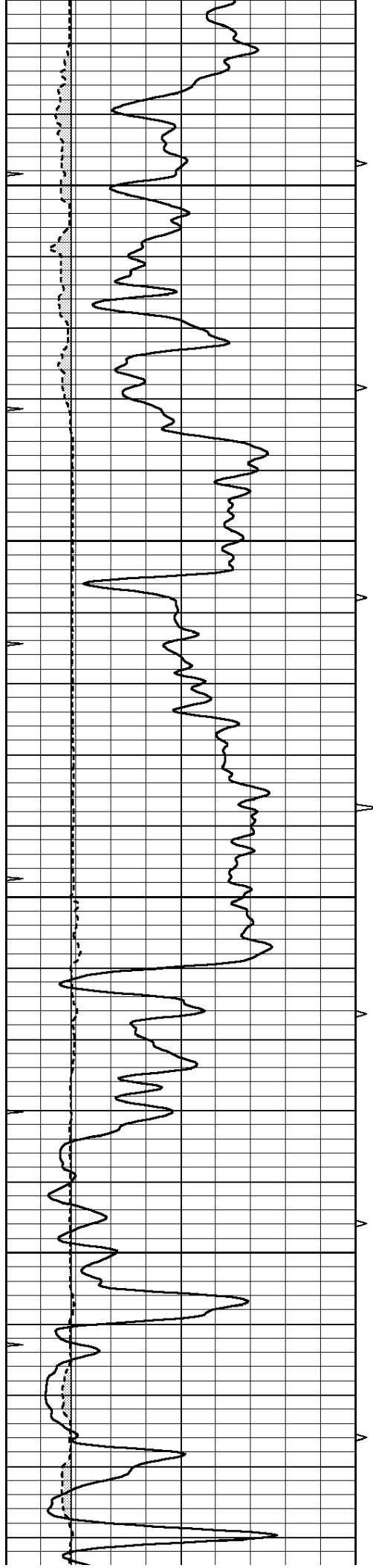


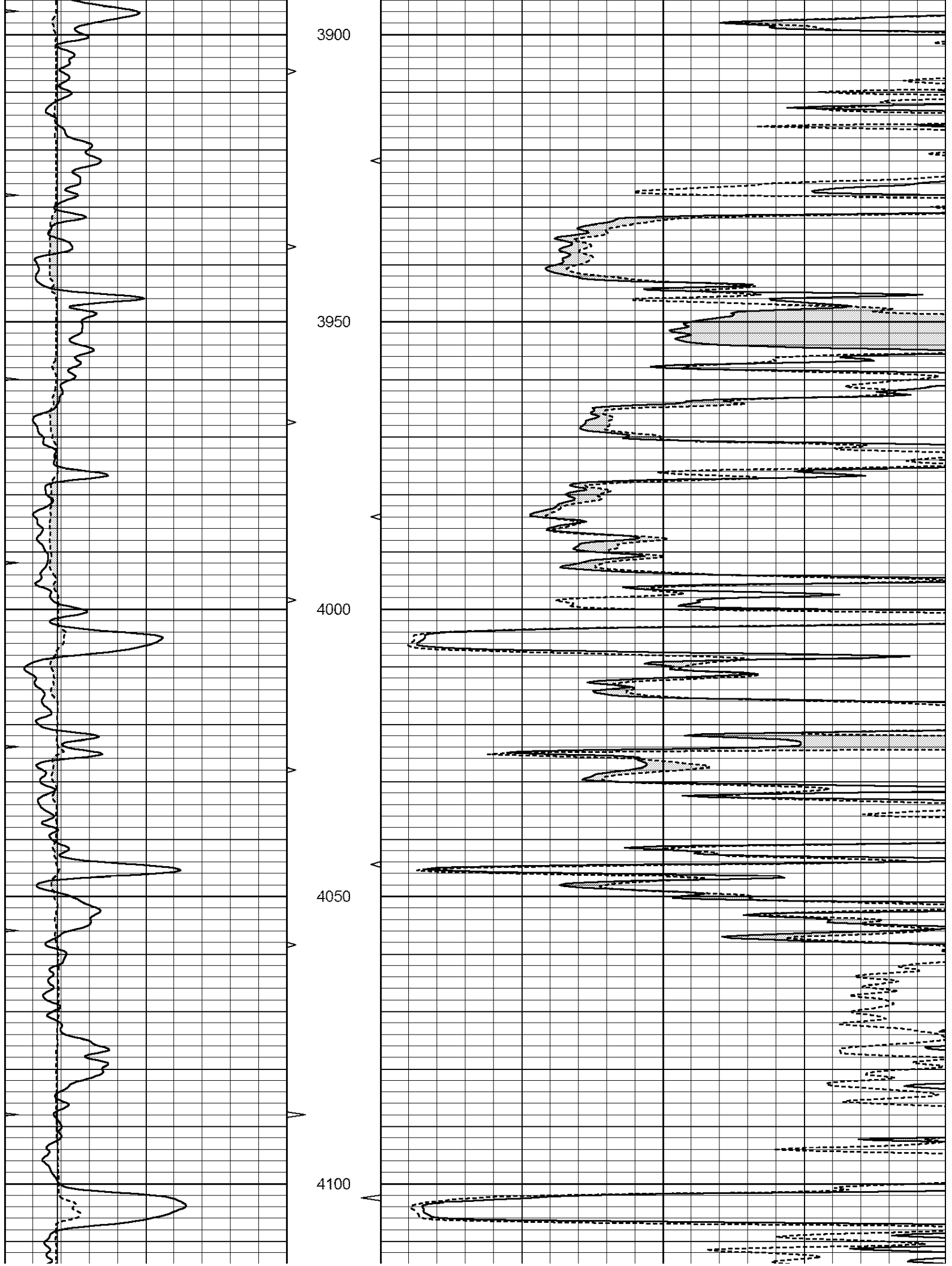
**MAIN SECTION**

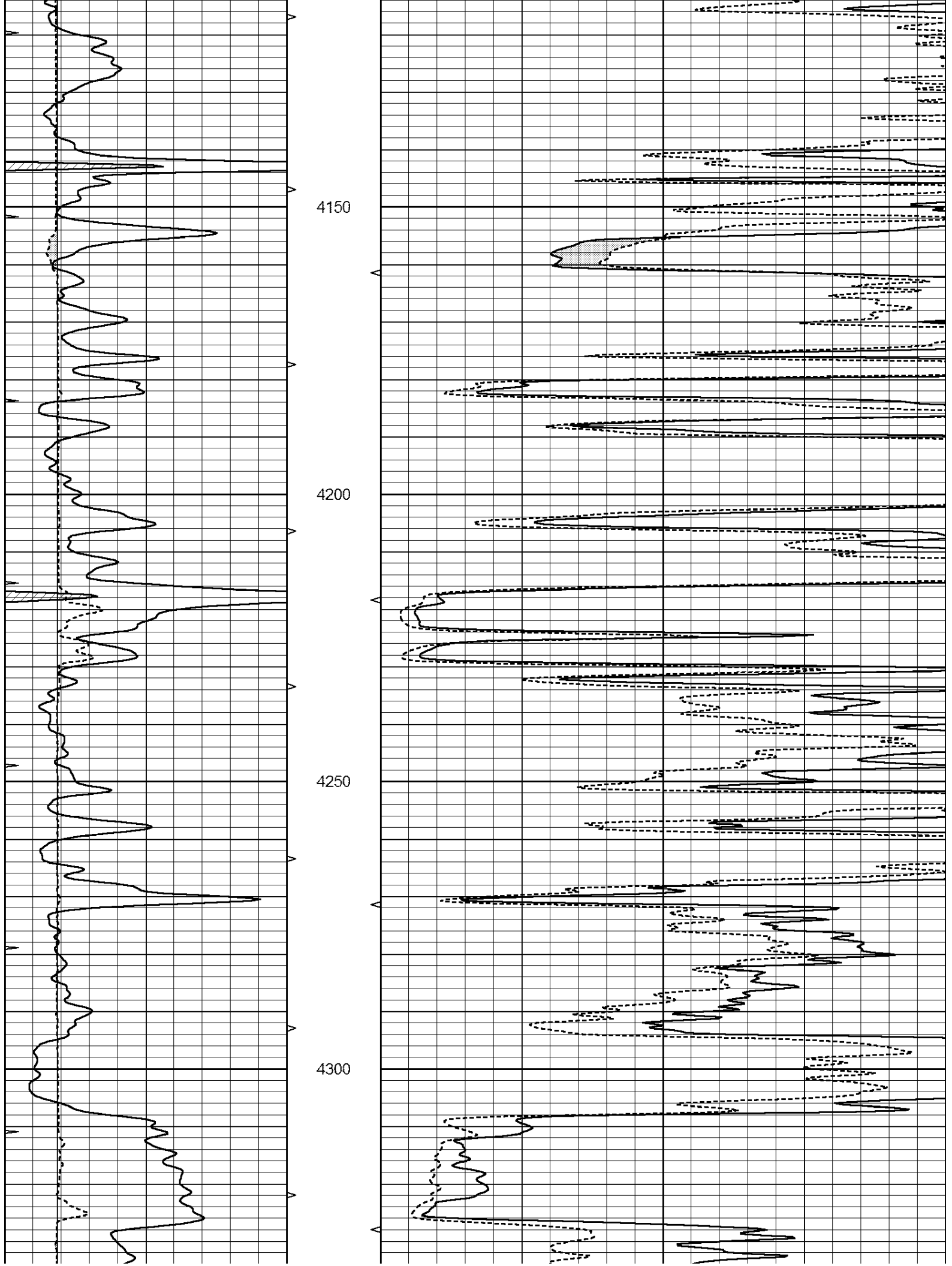
Database File: 24232ddn.db  
 Dataset Pathname: pass6.1  
 Presentation Format: \_micro  
 Dataset Creation: Fri Apr 25 14:42:47 2014 by Calc Open-Cased 090629  
 Charted by: Depth in Feet scaled 1:240

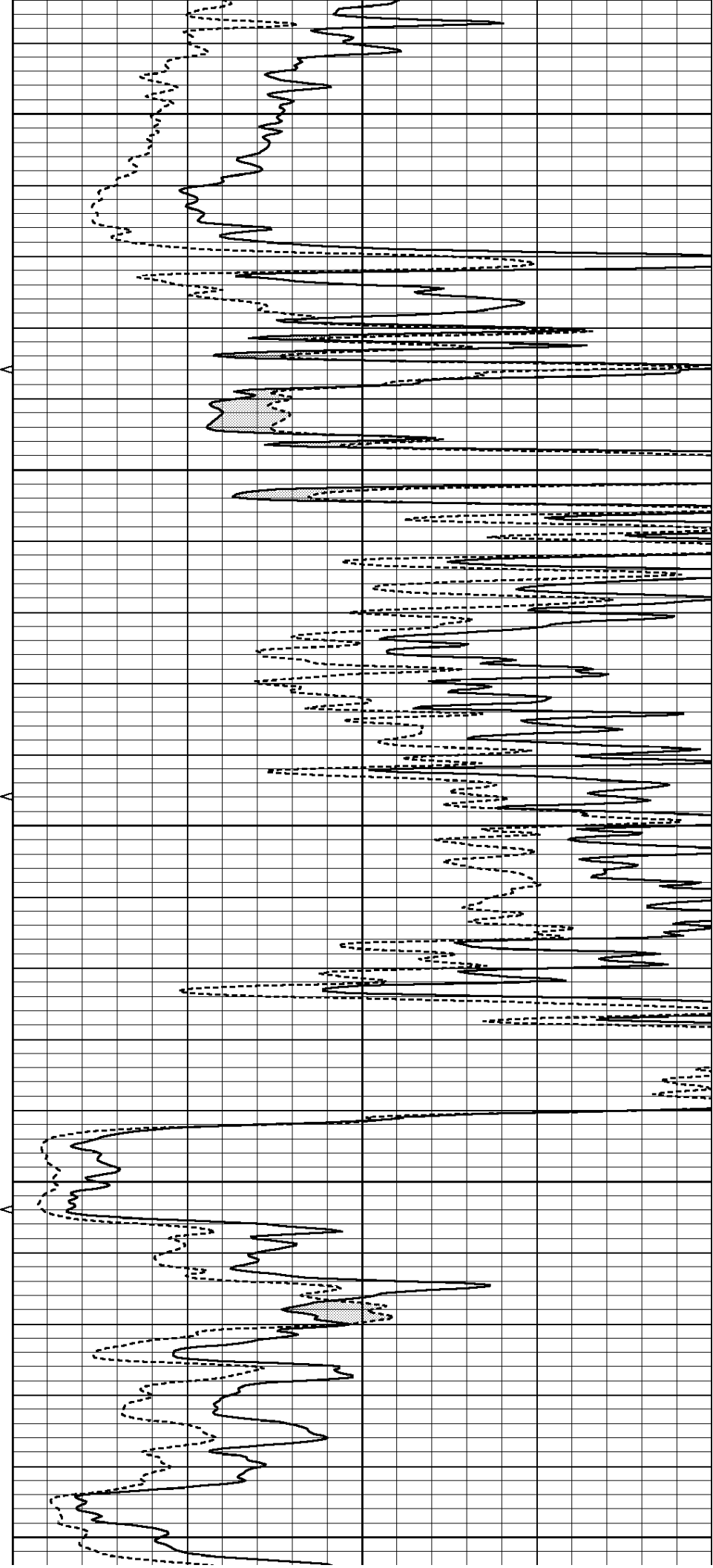
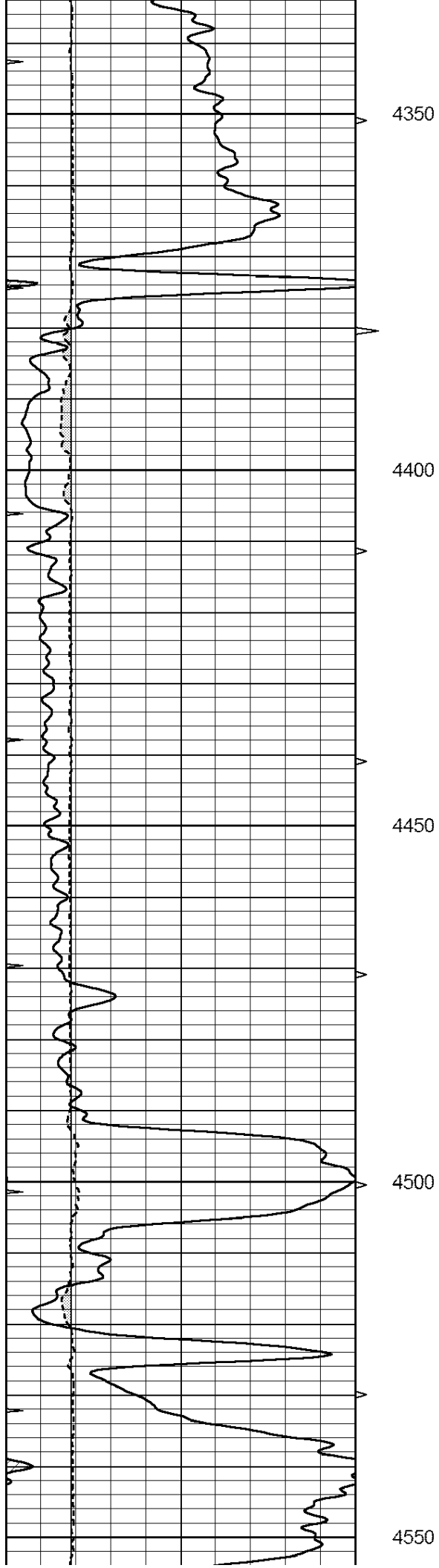
0	GAMMA RAY (GAPI)	150	ABHV	0	MEL1.5 (Ohm-m)	40
6	CALIPER (in)	16	10 (ft3)	0	MEL2.0 (Ohm-m)	40
0	MINMK	20	TBHV			
			0 (ft3)	10		

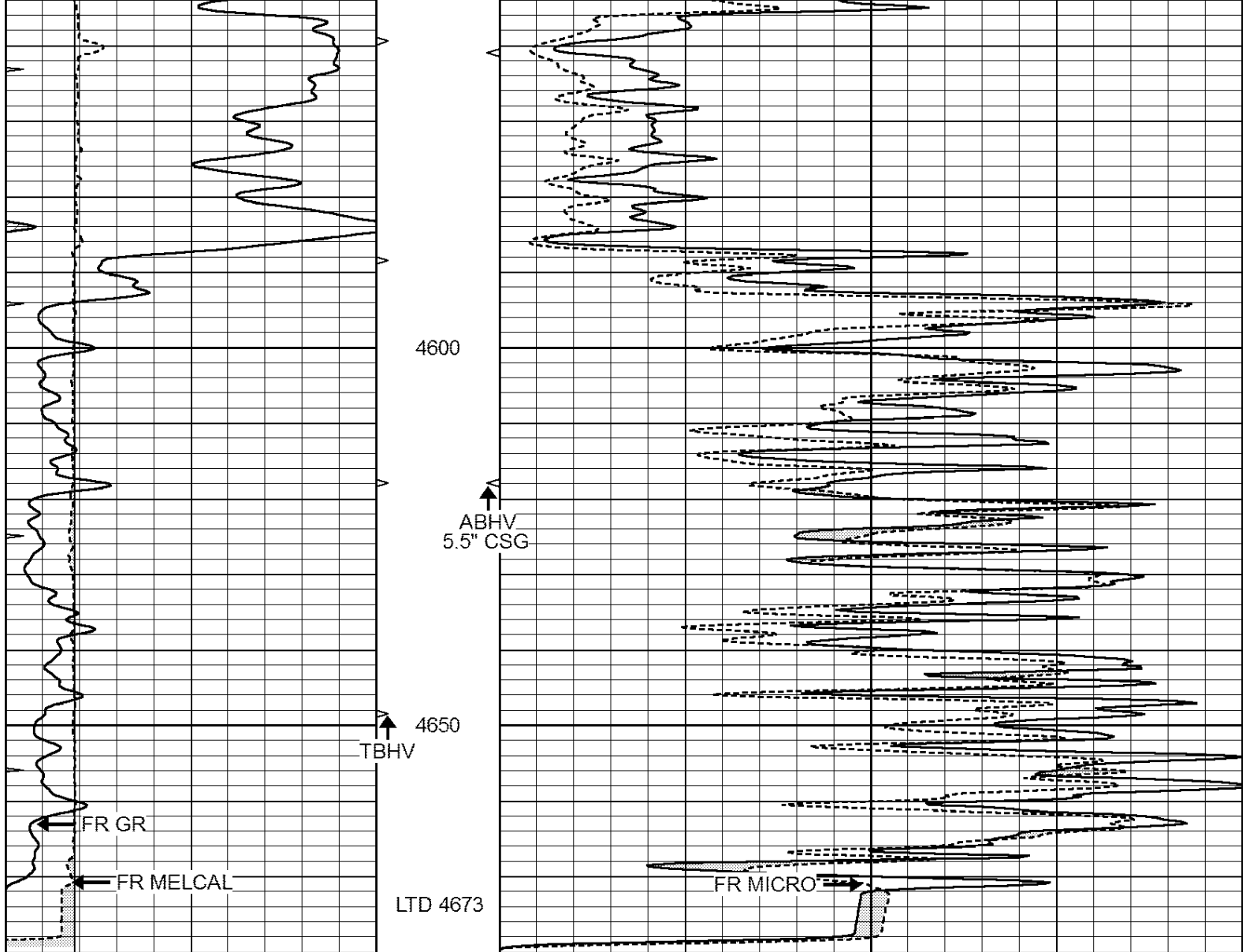












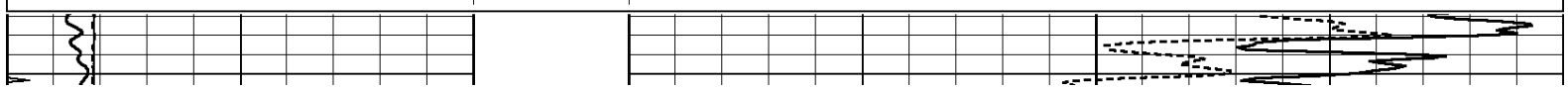
0	GAMMA RAY (GAPI)	150	ABHV	0	MEL1.5 (Ohm-m)	40
6	CALIPER (in)	16	10 (ft3)	0	MEL2.0 (Ohm-m)	40
0	MINMK	20	TBHV			
			0 (ft3)	10		

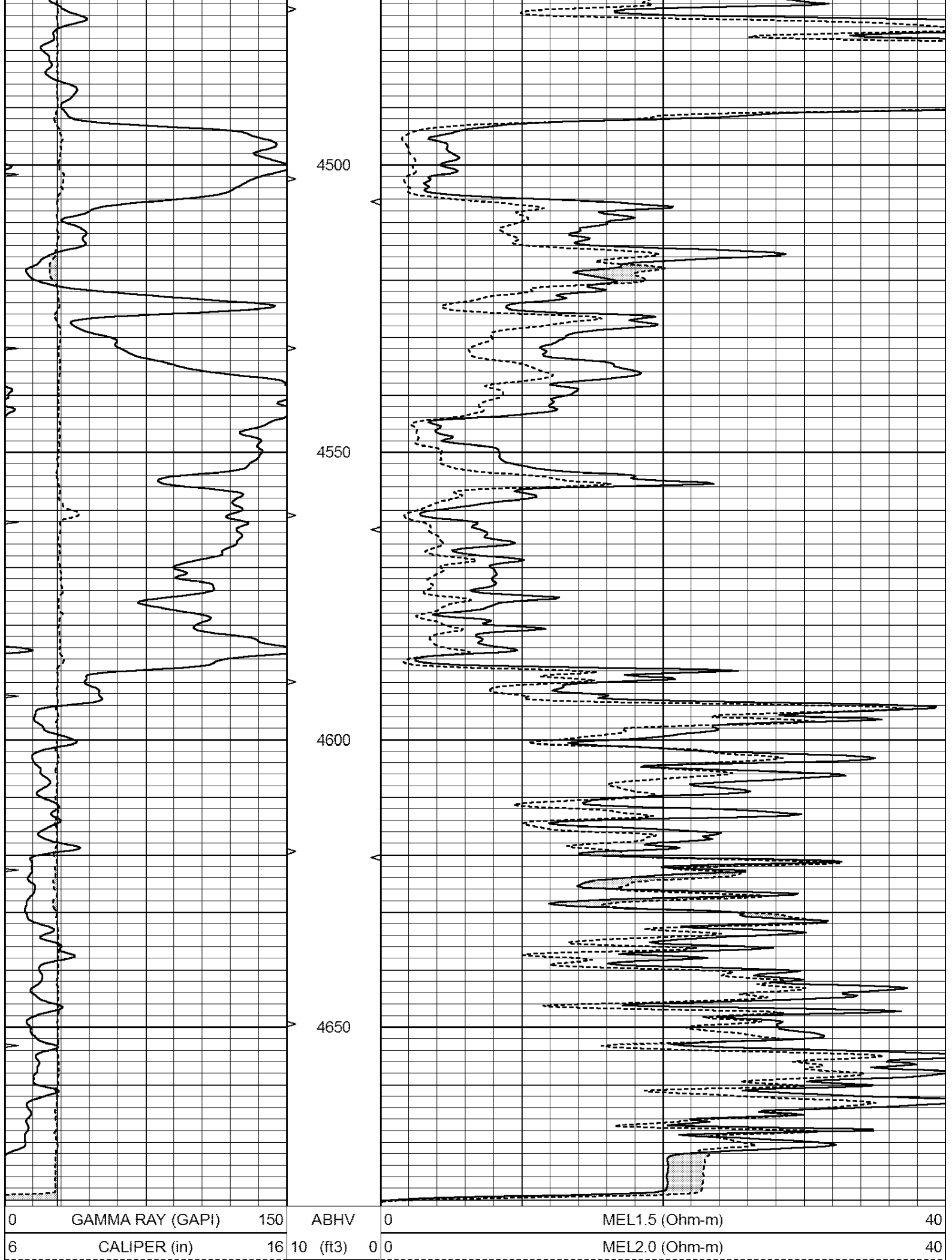


# REPEAT SECTION

Database File: 24232ddn.db  
 Dataset Pathname: pass5.1  
 Presentation Format: \_micro  
 Dataset Creation: Fri Apr 25 14:31:25 2014 by Calc Open-Cased 090629  
 Charted by: Depth in Feet scaled 1:240

0	GAMMA RAY (GAPI)	150	ABHV	0	MEL1.5 (Ohm-m)	40
6	CALIPER (in)	16	10 (ft3)	0	MEL2.0 (Ohm-m)	40
0	MINMK	20	TBHV			
			0 (ft3)	10		





0	MINMK	20	TBHV
		0	(ft3) 10

### Calibration Report

Database File: 24232ddn.db  
 Dataset Pathname: pass5.1  
 Dataset Creation: Fri Apr 25 14:31:25 2014 by Calc Open-Cased 090629

#### MICRO Calibration Report

Serial Number: MICRO6  
 Tool Model: PROBE  
 Performed: Fri Mar 14 21:54:54 2014

Caliper Calibration: Gain=5.542      Offset=-0.920

	Low Cal	High Cal
References	8.000	14.000
Readings	1.431	2.513

1.5" Calibration: Gain=38.075      Offset=0.000

	Low Cal	High Cal
References	0.000	20.000
Readings	0.004	1.196

2" Calibration: Gain=44.000      Offset=-0.600

	Low Cal	High Cal
References	0.000	20.000
Readings	0.006	0.913

#### Gamma Ray Calibration Report

Serial Number: GR6  
 Tool Model: OPEN  
 Performed: Fri Nov 29 08:34:37 2013

Calibrator Value: 150.0      GAPI

Background Reading:	0.0	cps
Calibrator Reading:	276.0	cps

Sensitivity: 0.6035      GAPI/cps