



Pioneer Energy Services

Sonic Cement
Bond Log

15-035-24444-00-01

Company Future Acquisition Company
Well Belvedere No. 1 OWWO
Field NA
County Cowley State Kansas

Location

2000' FNL @ 2165' FWL

Other Services

Sec: 4

Twp: 32S

Rge: 6E

Elevation

K.B. NA

D.F. 1313

G.L. 1313

Permanent Datum Ground Level Elevation 1313
Log Measured From Ground Level 0 Ft. Above Perm. Datum
Drilling Measured From Kelly Bushing

Run Number

One

Date Survey

3/26/2014

Date Cementing

////

Type Cementing Operation

Primary

Depth Driller

////

Depth Logger

3539

Logged Interval

3539 to 1610

Casing Driller

5.5 @ TD

Float Collar -- D.V. Tool

//// @

Squeeze Depth

////

Amount & Type Cement

////

Amount & Type Admix

////

Type Fluid In Hole

Water

Fluid Level

Full

Salinity PPM CL

////

Weight lb/gal -- Vis.

////

Approx. Logged Cement Top

1810

Calculated Cement Top

////

Max. Hole Temperature

////

Tool No.

RBT 1-1

Spacing Recorded

3-5

Equipment -- Location

106 Pratt

Recorded By

T. VanDusen

Witnessed By

Terry Madden

<<< Fold Here >>>

All interpretations are opinions based on inferences from electrical or other measurements and we cannot and do not guarantee the accuracy or correctness of any interpretation, and we shall not, except in the case of gross or willful negligence on our part, be liable or responsible for any loss, costs, damages, or expenses incurred or sustained by anyone resulting from any interpretation made by any of our officers, agents or employees. These interpretations are also subject to our general terms and conditions set out in our current Price Schedule.

Comments

Thank you for using Pioneer Energy Services
(620) 672-8300

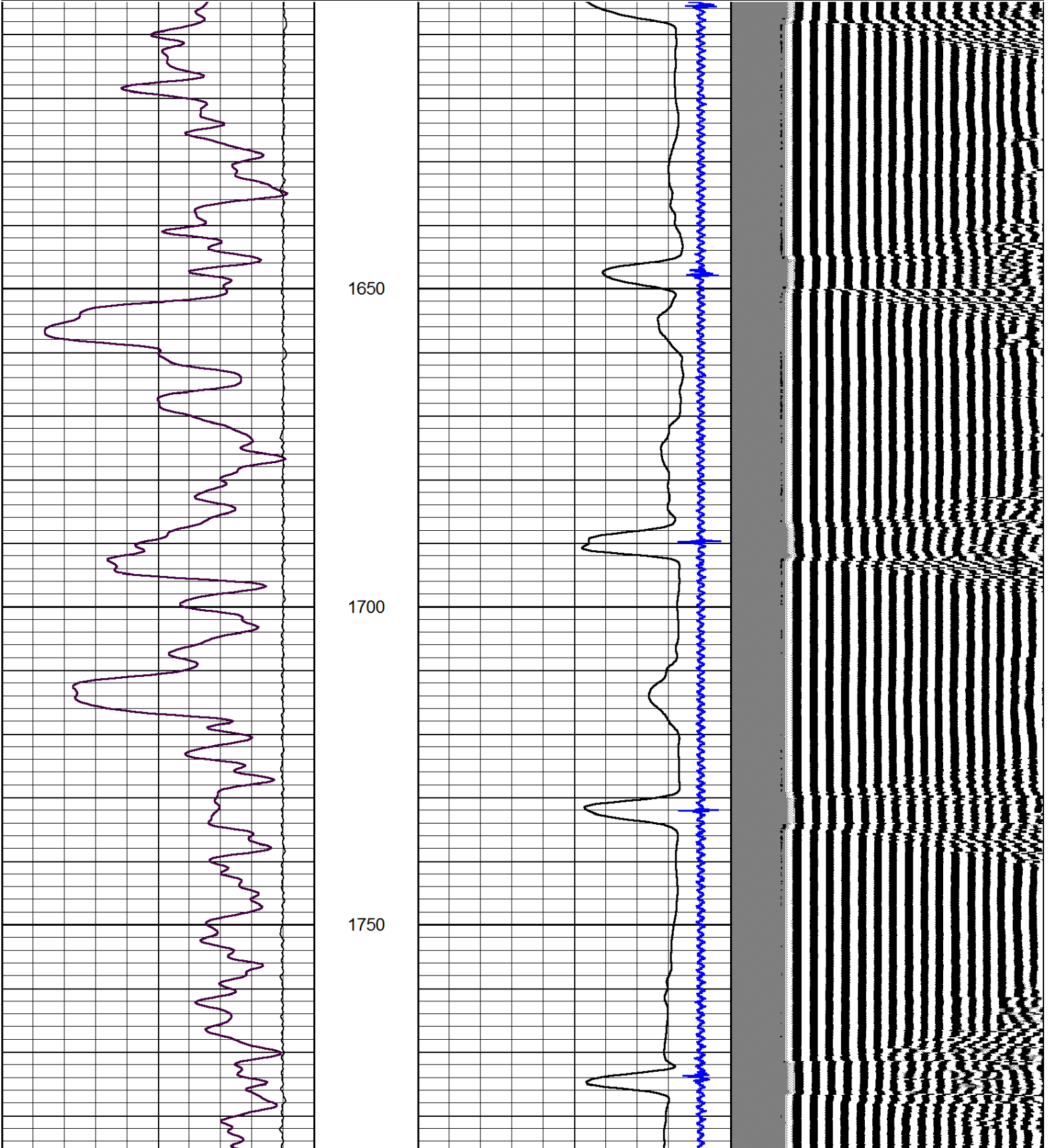
Winfield Ks, 10 East On Hwy 160
4 North, 1/2 West Through Gate On Lease Rd,
South Into



Main Pass

Database File: future_belvedere_1.db
Dataset Pathname: grcbl/pass5
Presentation Format: cbldr
Dataset Creation: Wed Mar 26 14:10:41 2014 by Log SCH 111116
Charted by: Depth in Feet scaled 1:240

| | | | | | | | | | |
|---|-----------|-----|---------|----|--------------------------|------|-----|--------|------|
| 0 | Gamma Ray | 150 | amp3ft | 16 | Casing Collars | -1.7 | 200 | wvf5ft | 1200 |
| | | | (mV) | 0 | Amplified Amplitude (mV) | 100 | | | |
| | | | -100 10 | 0 | Pipe Amplitude (mV) | 20 | | | |





1800

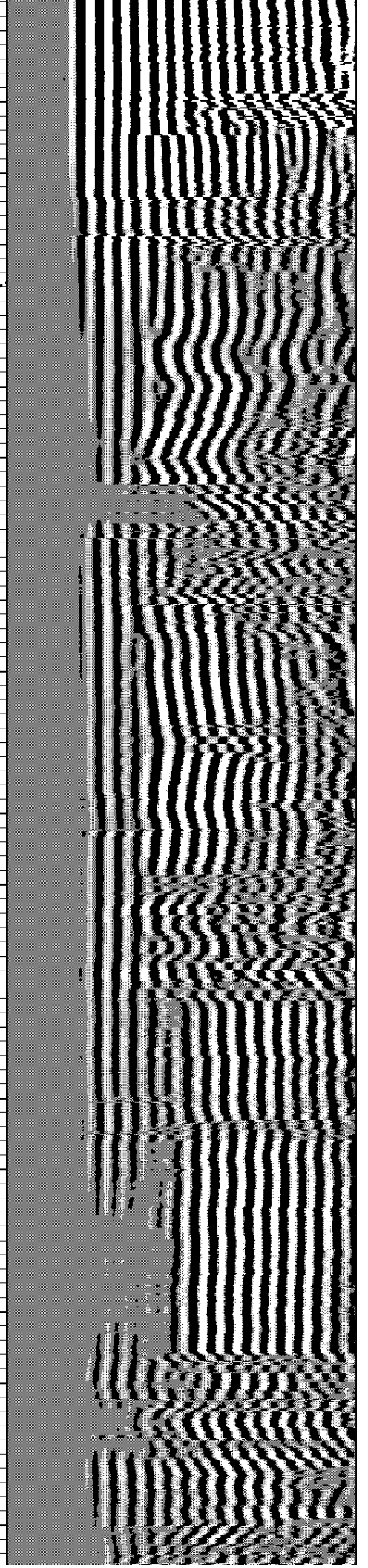
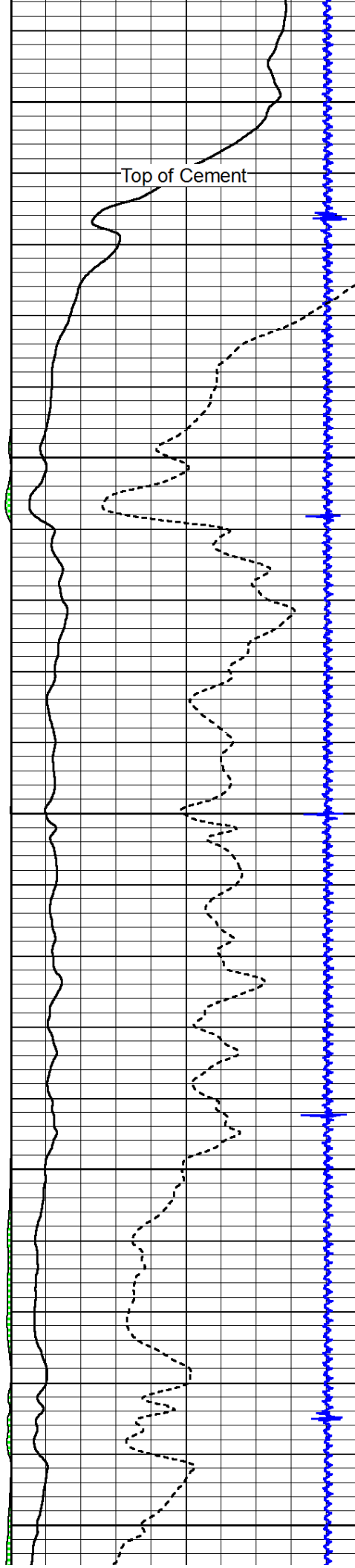
Top of Cement

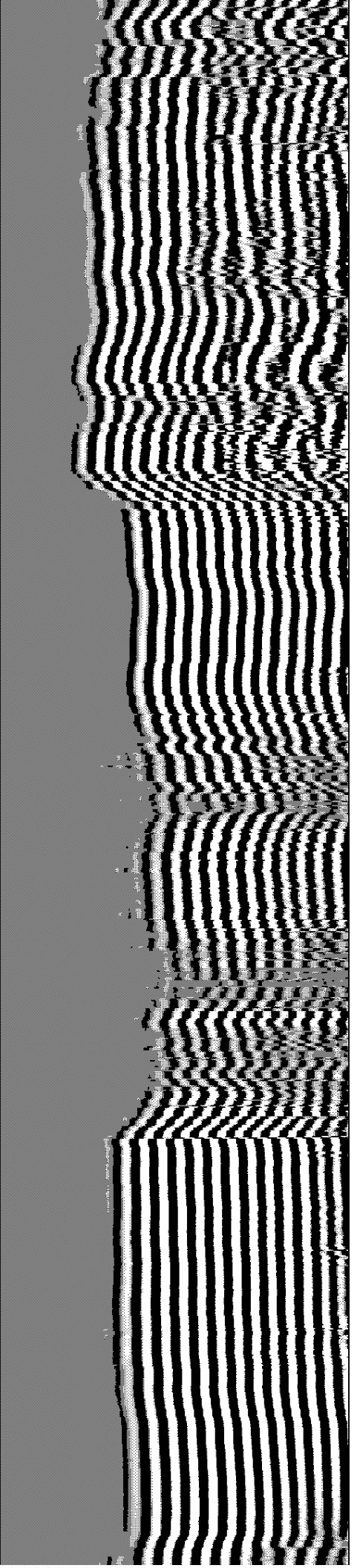
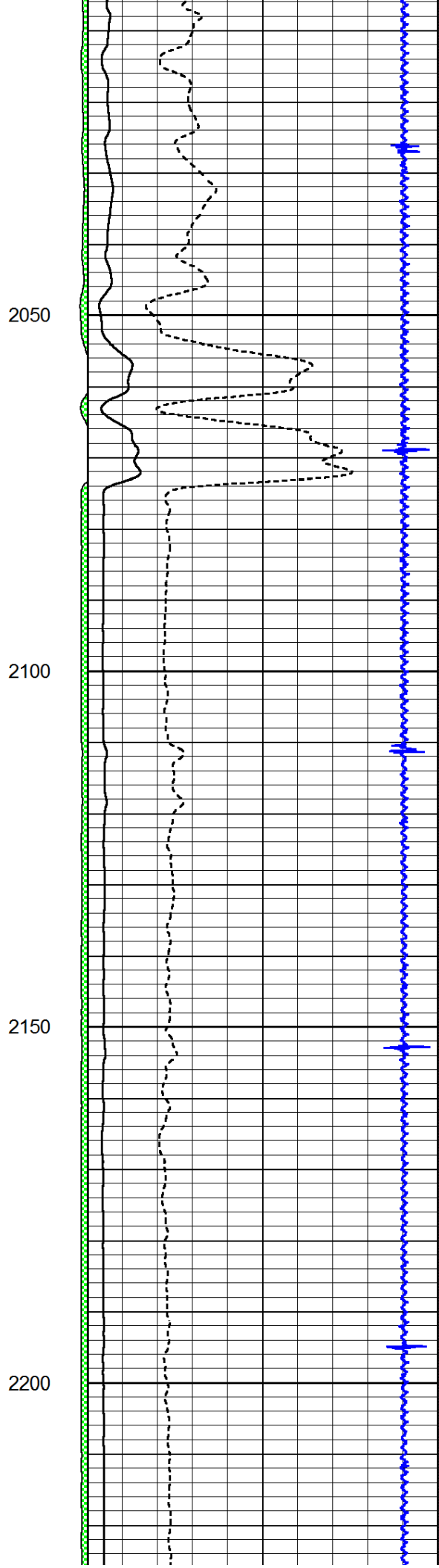
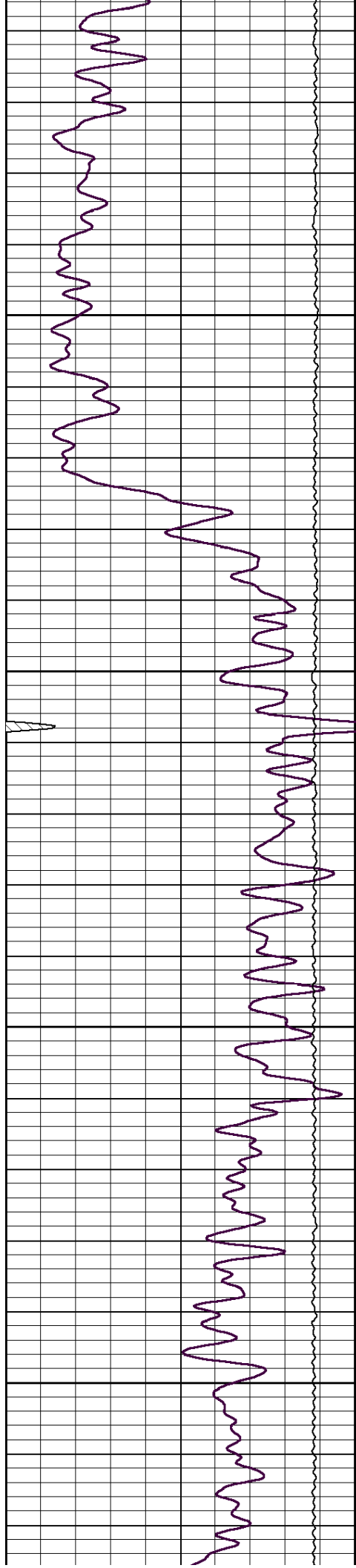
1850

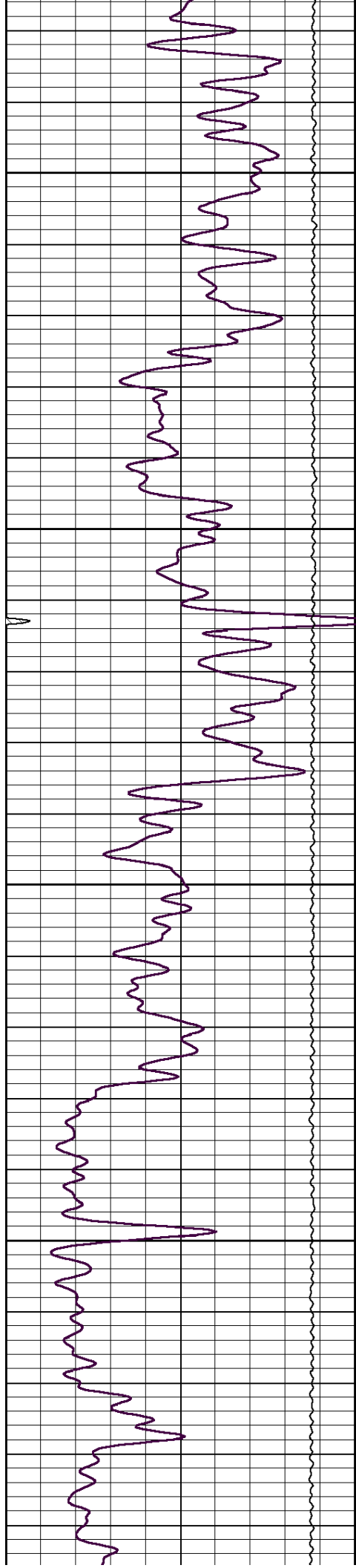
1900

1950

2000





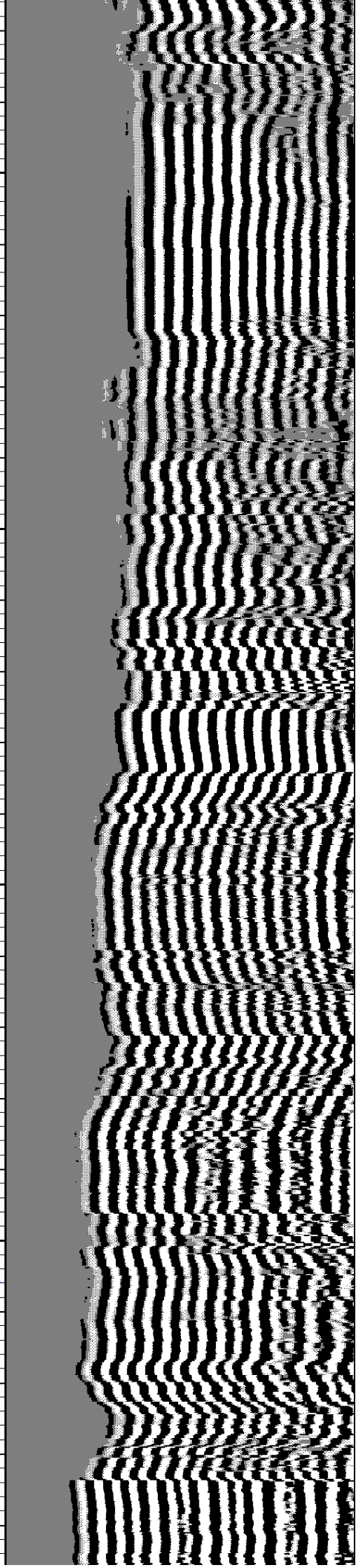
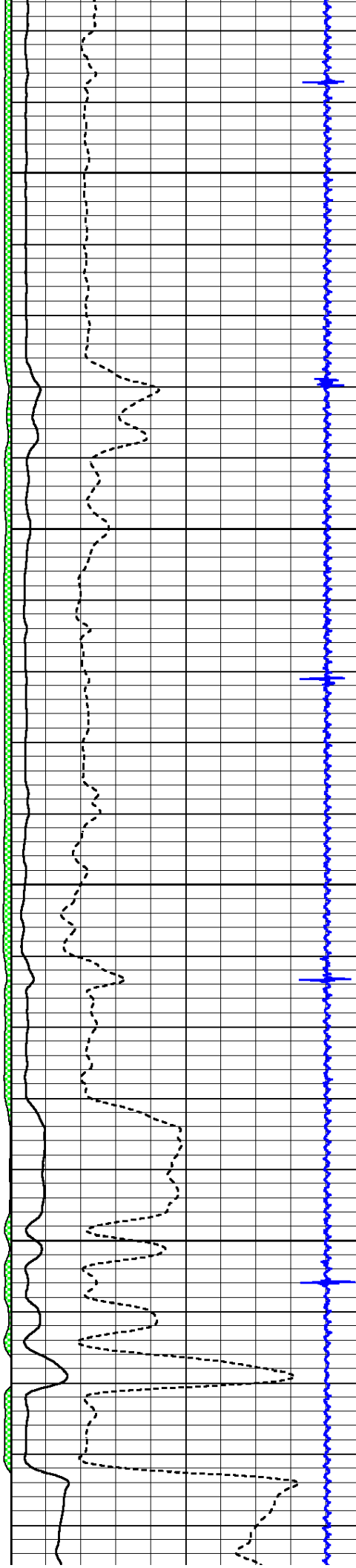


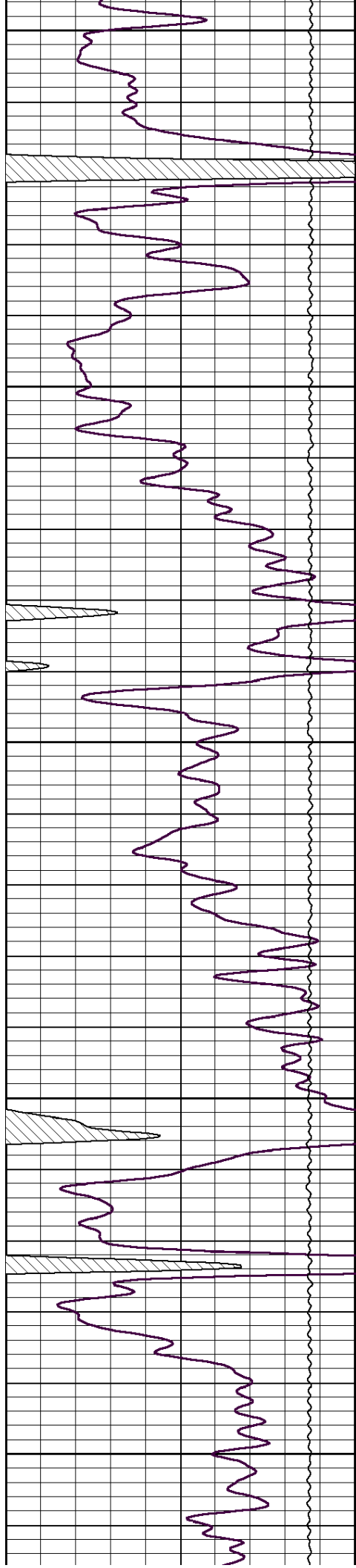
2250

2300

2350

2400





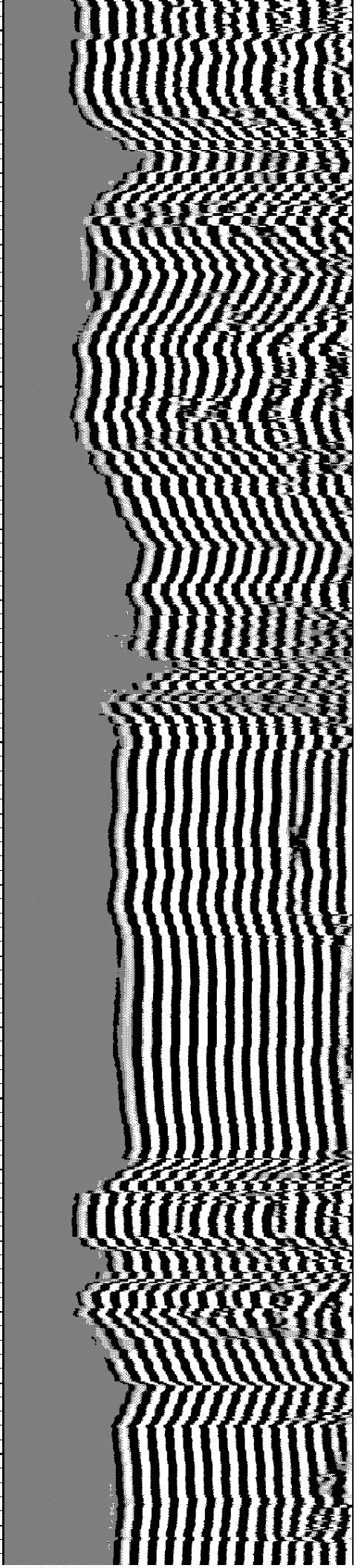
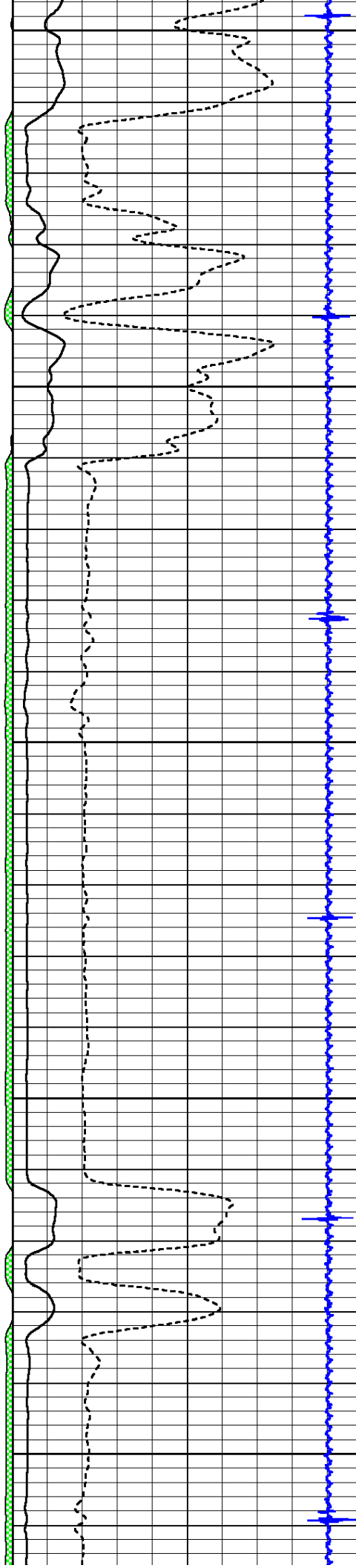
2450

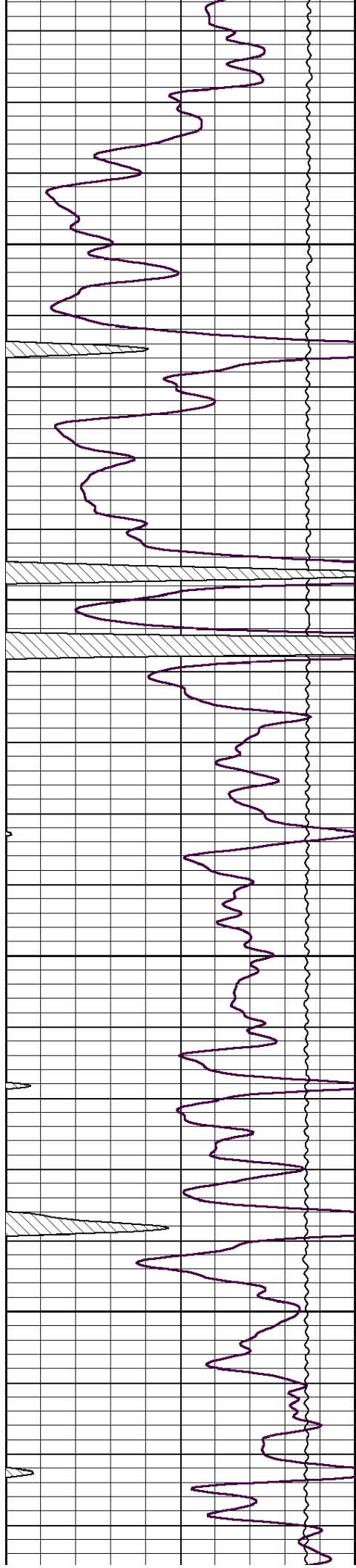
2500

2550

2600

2650



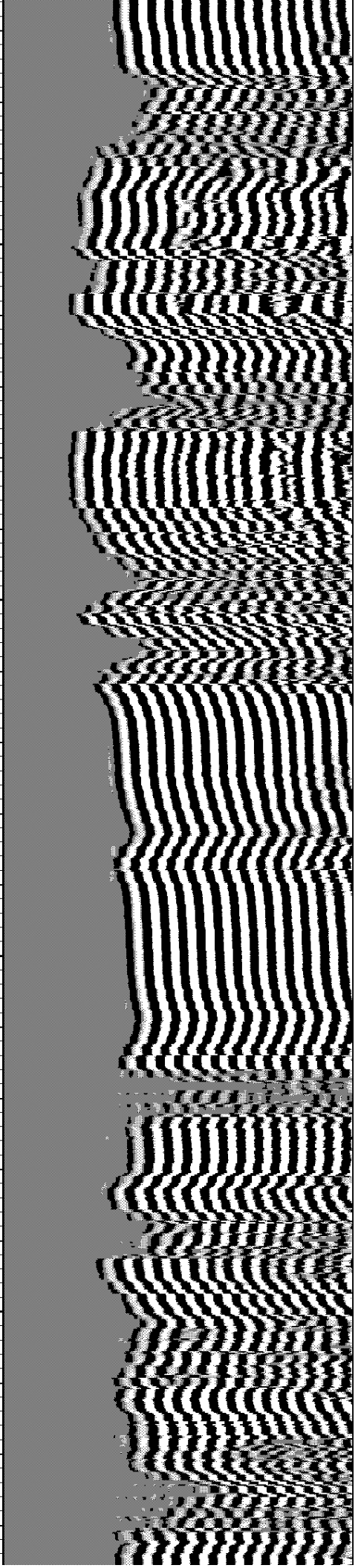
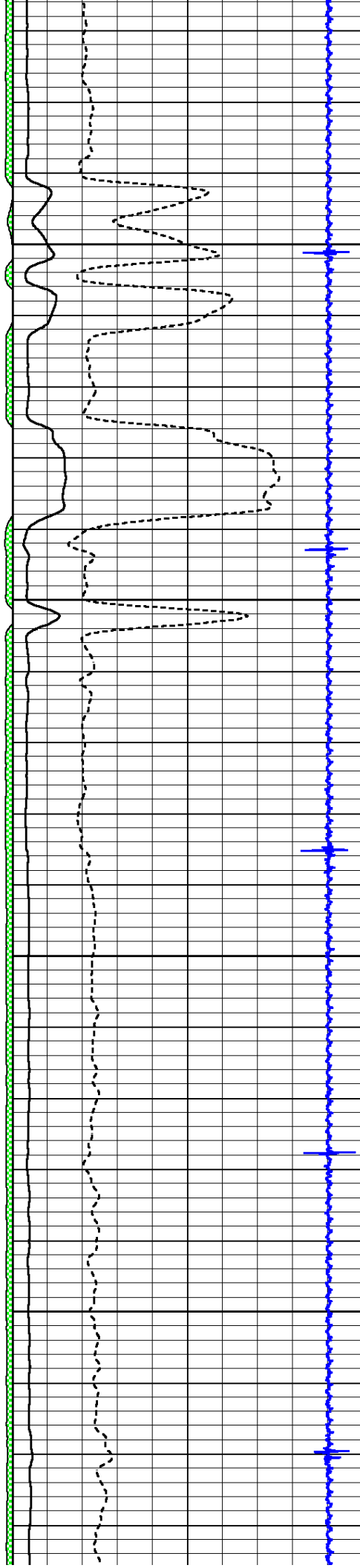


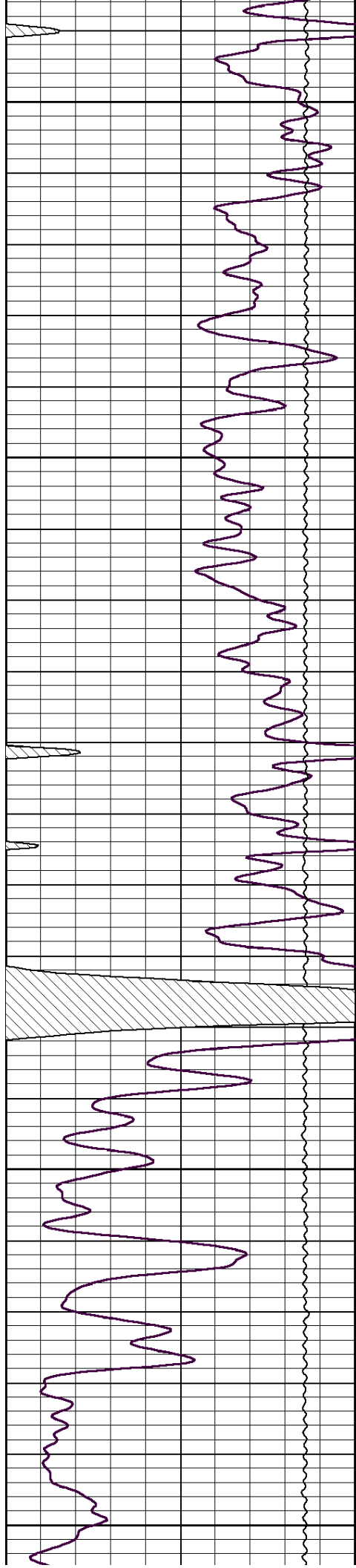
2700

2750

2800

2850





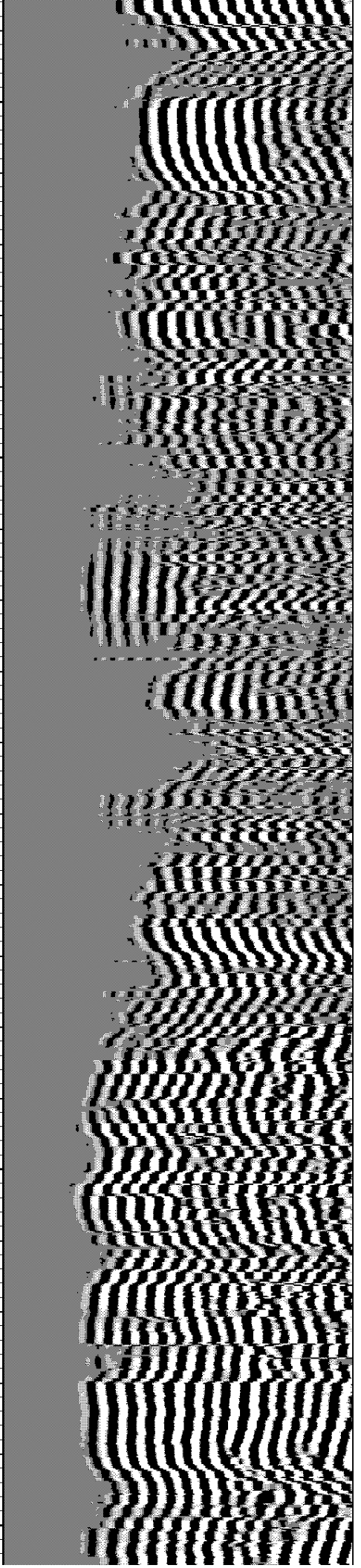
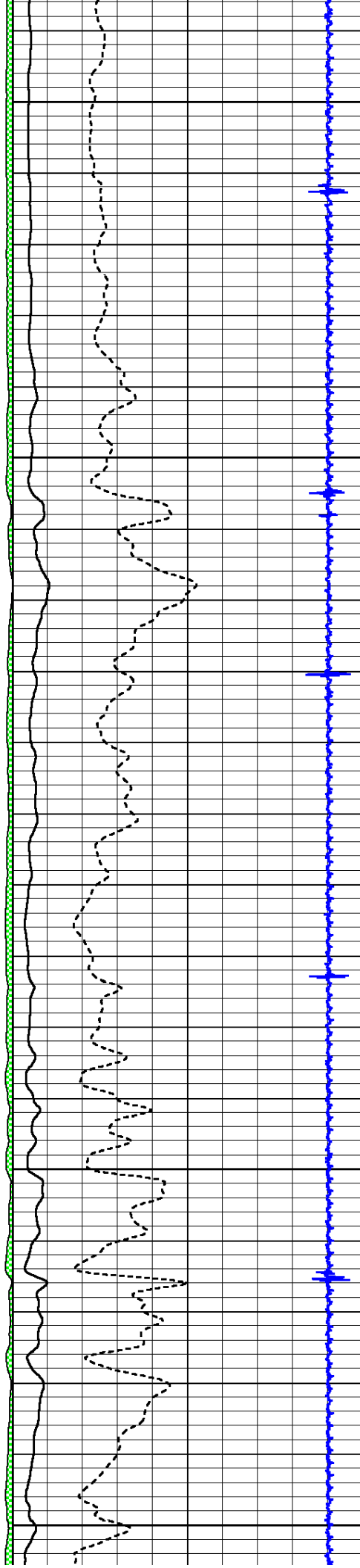
2900

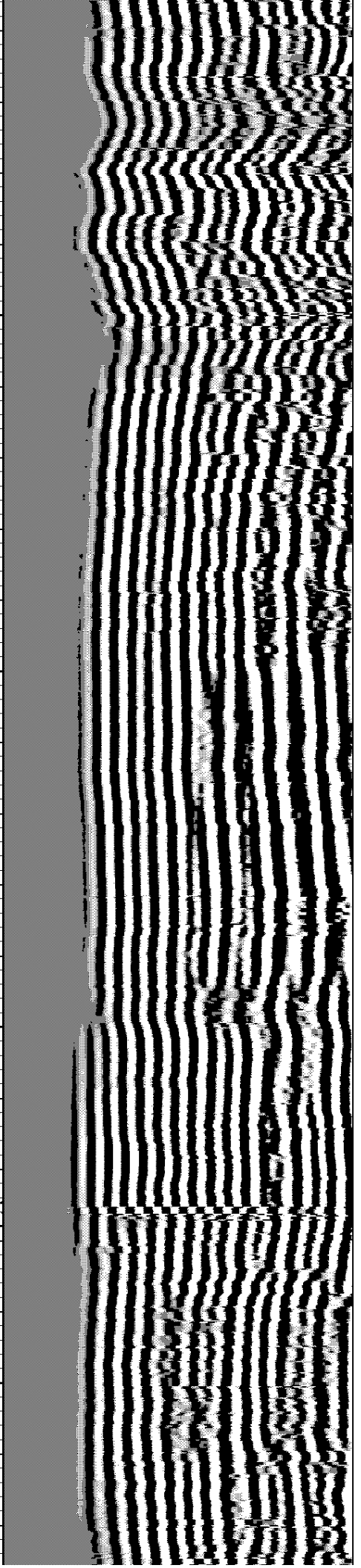
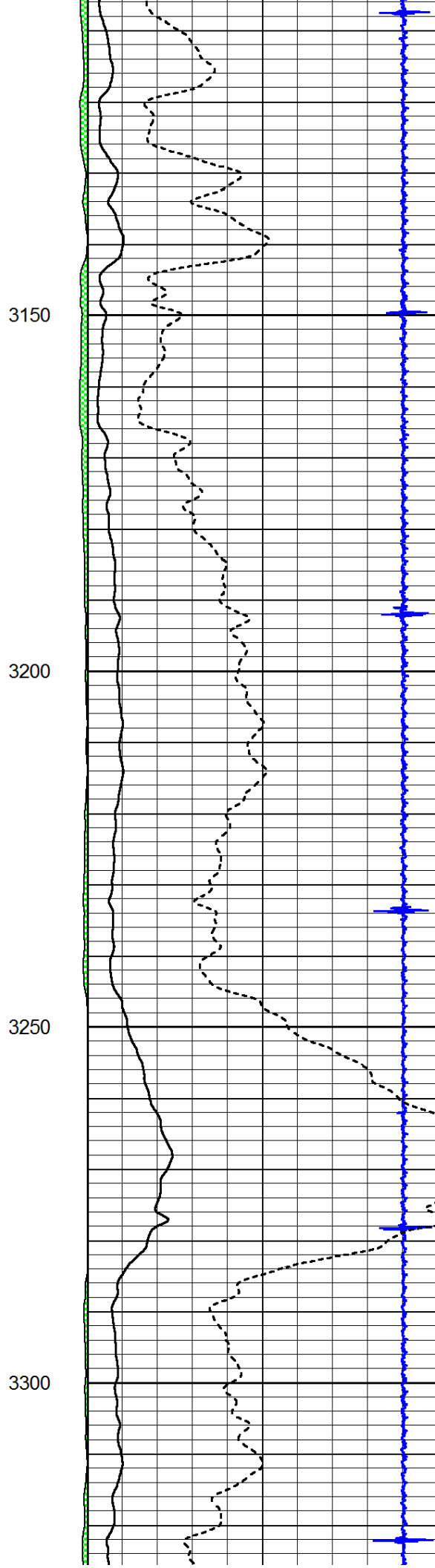
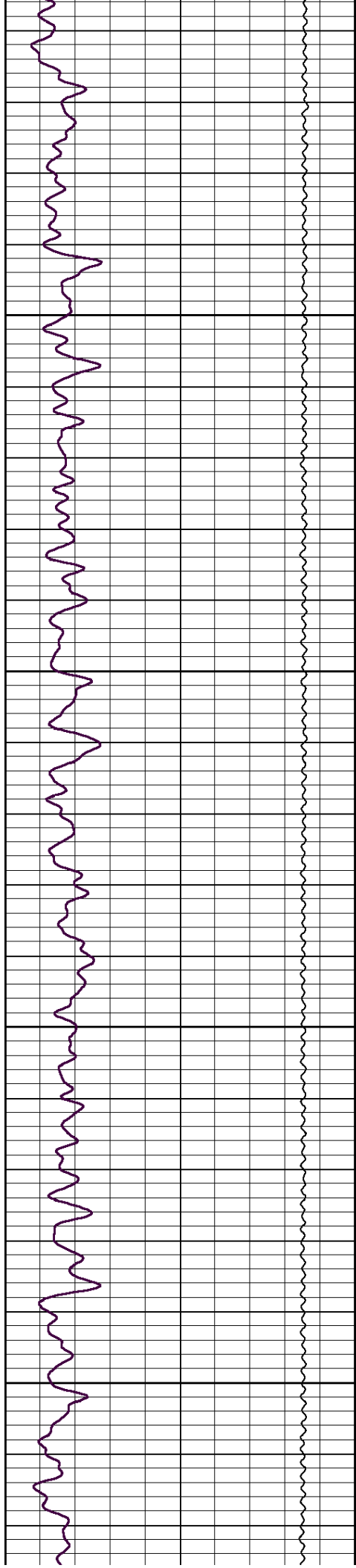
2950

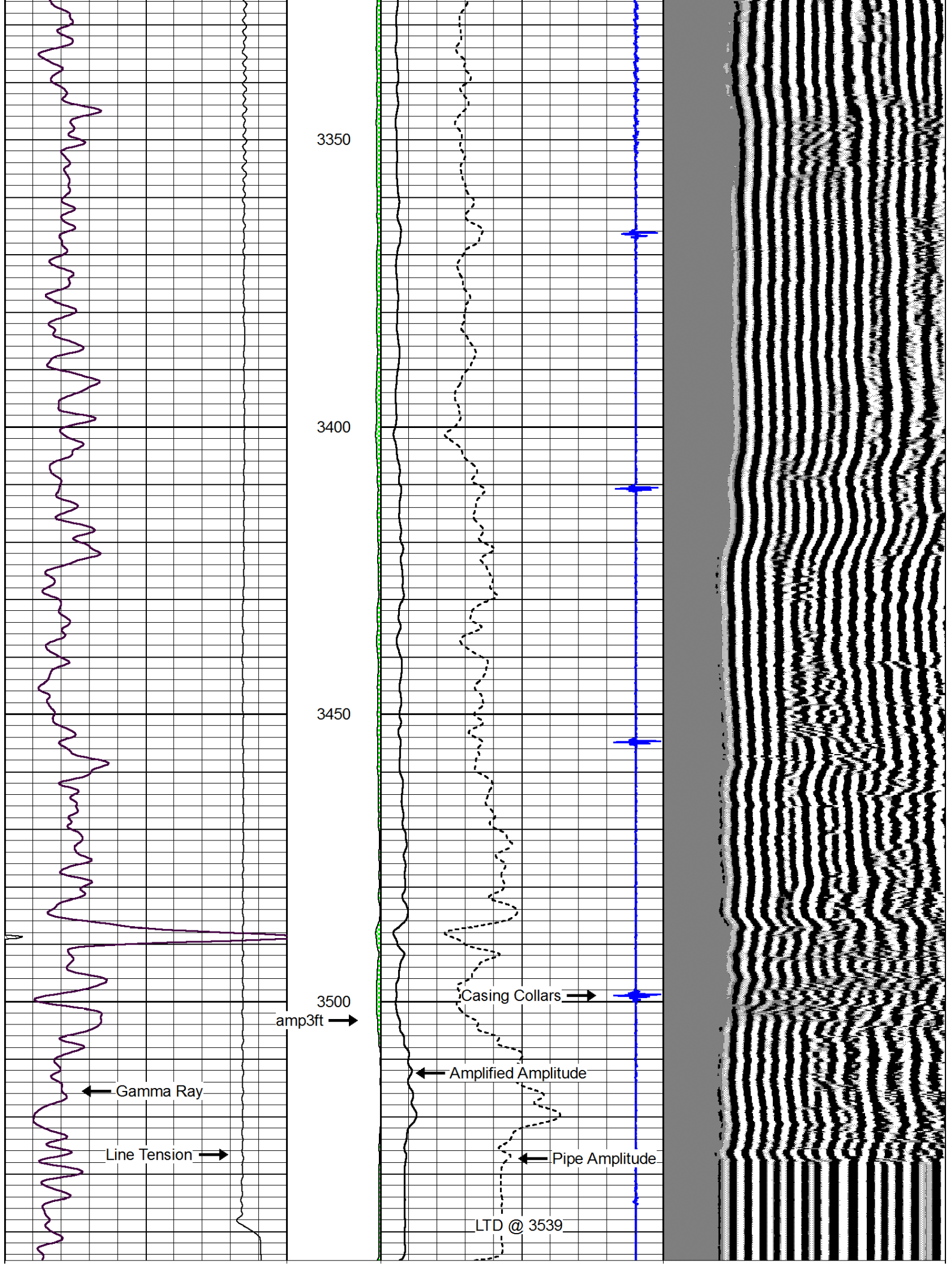
3000

3050


3100







| | | | | | | | | | |
|---|-----------|-----|---------|----|--------------------------|------|-----|--------|------|
| 0 | Gamma Ray | 150 | amp3ft | 16 | Casing Collars | -1.7 | 200 | wvf5ft | 1200 |
| | | | (mV) | 0 | Amplified Amplitude (mV) | 100 | | | |
| | | | -100 10 | 0 | Pipe Amplitude (mV) | 20 | | | |



PIONEER
Pioneer Energy Services

Repeat Section

Database File: future_belvedere_1.db
 Dataset Pathname: grcbl/pass3
 Presentation Format: cbldr
 Dataset Creation: Wed Mar 26 14:01:58 2014 by Log SCH 111116
 Charted by: Depth in Feet scaled 1:240

| | | | | | | | | | |
|---|-----------|-----|---------|----|--------------------------|------|-----|--------|------|
| 0 | Gamma Ray | 150 | amp3ft | 16 | Casing Collars | -1.7 | 200 | wvf5ft | 1200 |
| | | | (mV) | 0 | Amplified Amplitude (mV) | 100 | | | |
| | | | -100 10 | 0 | Pipe Amplitude (mV) | 20 | | | |

