



**COMPLETION  
& PRODUCTION  
SERVICES CO.**

**MICRO  
LOG**

Company	RAYMOND OIL COMPANY, INC.	Company	RAYMOND OIL COMPANY, INC.
Well	DOWD #1	Well	DOWD #1
Field	ALAMOTA	Field	ALAMOTA
County	LANE	County	LANE
State	KANSAS	State	KANSAS
Location:	API # : 15-101-22515-00-00 1996' FSL & 1216' FWL	Other Services	CNL/CDL DIL
Permanent Datum	GROUND LEVEL	Elevation	2685
Log Measured From	KELLY BUSHING 5' A.G.L.	K.B.	2690
Drilling Measured From	KELLY BUSHING	D.F.	2688
		G.L.	2685

Date	6/15/14
Run Number	TWO
Depth Driller	4720
Depth Logger	4720
Bottom Logged Interval	4768
Top Log Interval	3400
Casing Driller	8 5/8" @ 261
Casing Logger	256
Bit Size	7 7/8"
Type Fluid in Hole	CHEMICAL MUD
Density / Viscosity	9.3/50
pH / Fluid Loss	11.0/7.6
Source of Sample	FLOWLINE
Rm @ Meas. Temp	0.95 @ 86F
Rmt @ Meas. Temp	0.71 @ 86F
Rmc @ Meas. Temp	1.14 @ 86F
Source of Rmf / Rmc	MEASUREMENT
Rm @ BHT	0.67 @ 122F
Time Circulation Stopped	2 HOURS
Time Logger on Bottom	
Maximum Recorded Temperature	122F
Equipment Number	4010
Location	HAYS, KANSAS
Recorded By	IAN MABB
Witnessed By	KIM SHOEMAKER

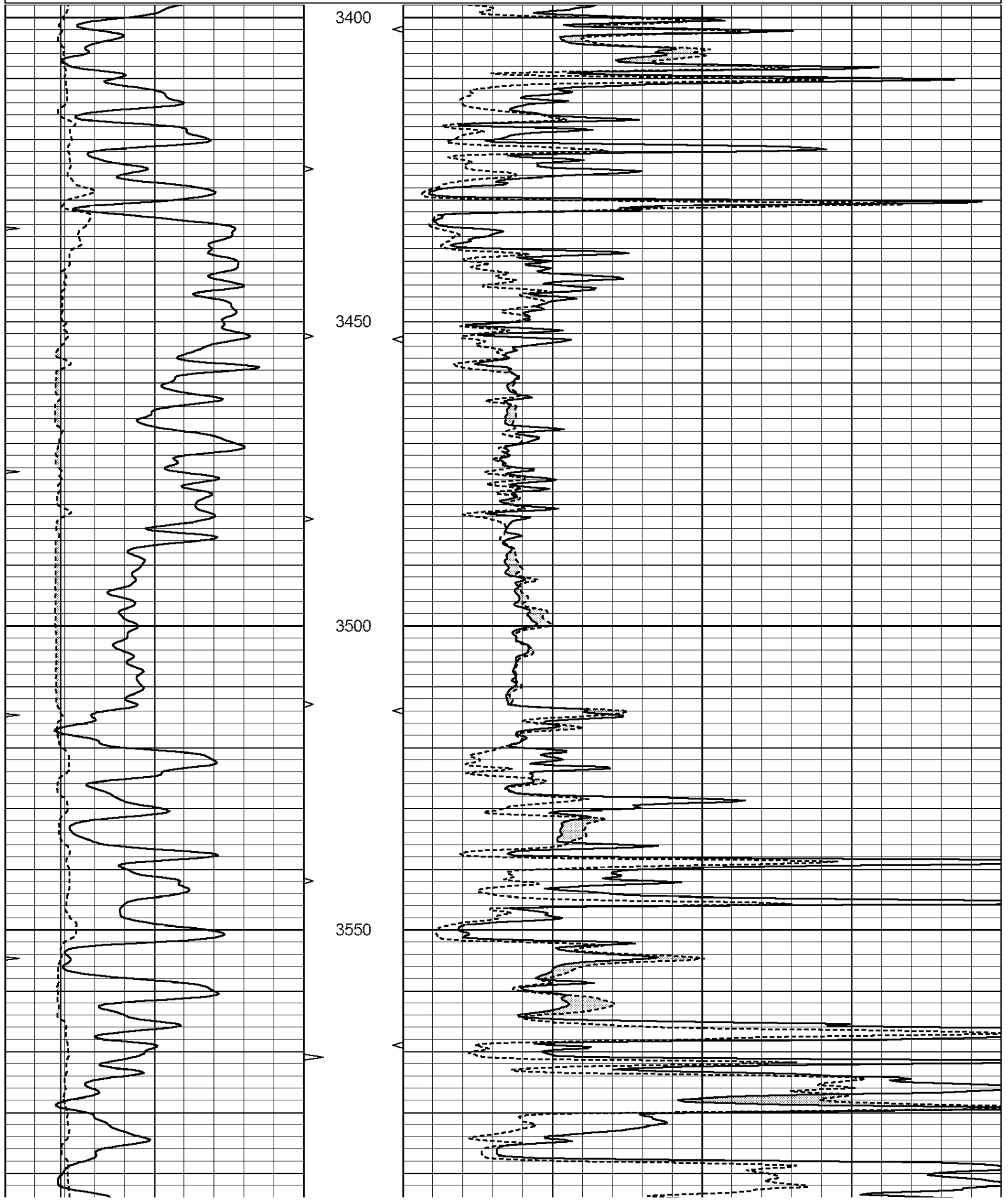
<<< Fold Here >>>

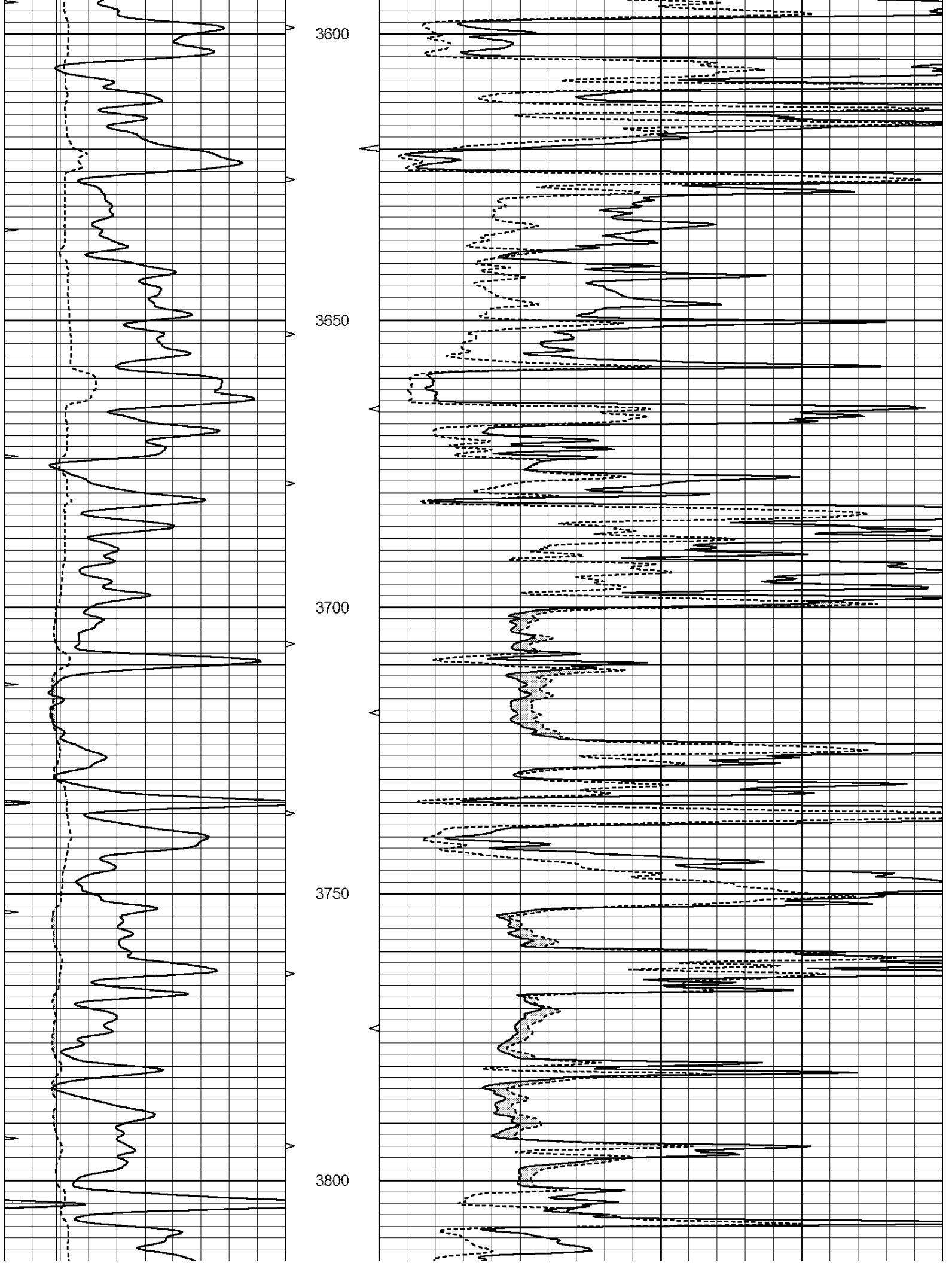
All interpretations are opinions based on inferences from electrical or other measurements and we cannot and do not guarantee the accuracy or correctness of any interpretation, and we shall not, except in the case of gross or willful negligence on our part, be liable or responsible for any loss, costs, damages, or expenses incurred or sustained by anyone resulting from any interpretation made by any of our officers, agents or employees. These interpretations are also subject to our general terms and conditions set out in our current Price Schedule.

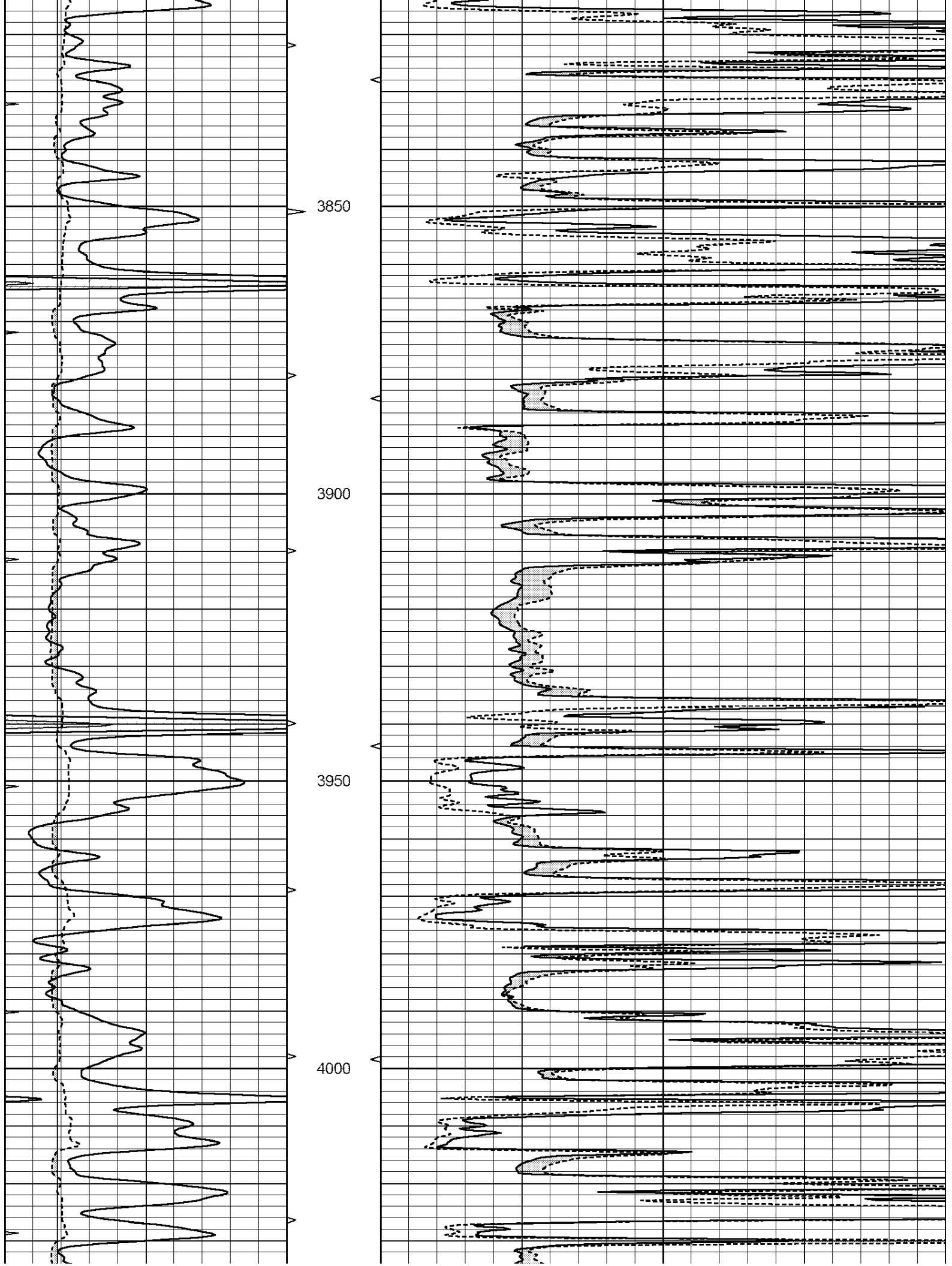
**Comments**

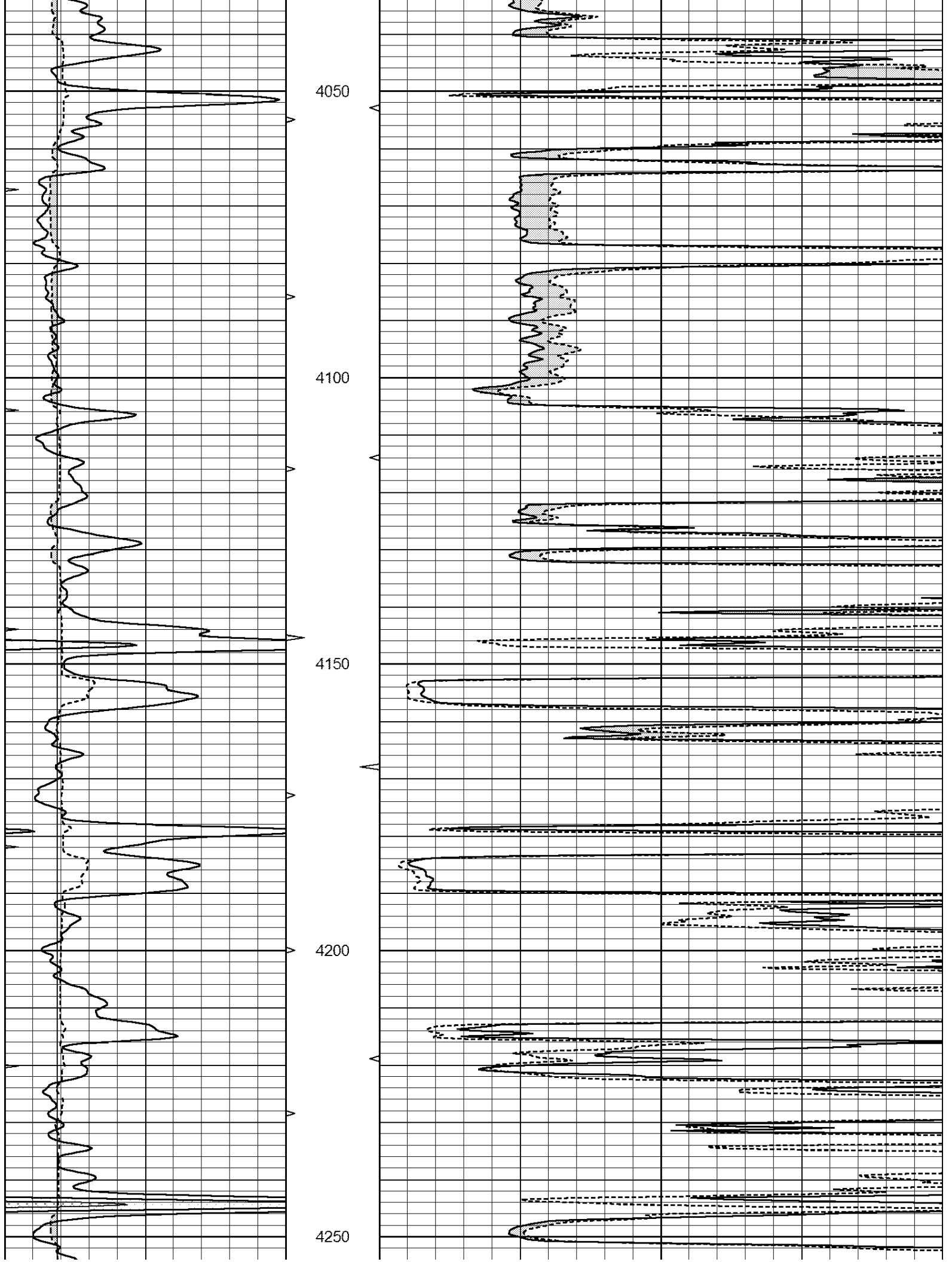
**THANK YOU FOR USING NABORS, HAYS, KS. (785) 628-6395**  
**DIRECTIONS:**  
**DIGHTON, KS. - 8 MILES EAST TO TURKEY RED RD. - NORTH 1/2 MILE - EAST INTO**

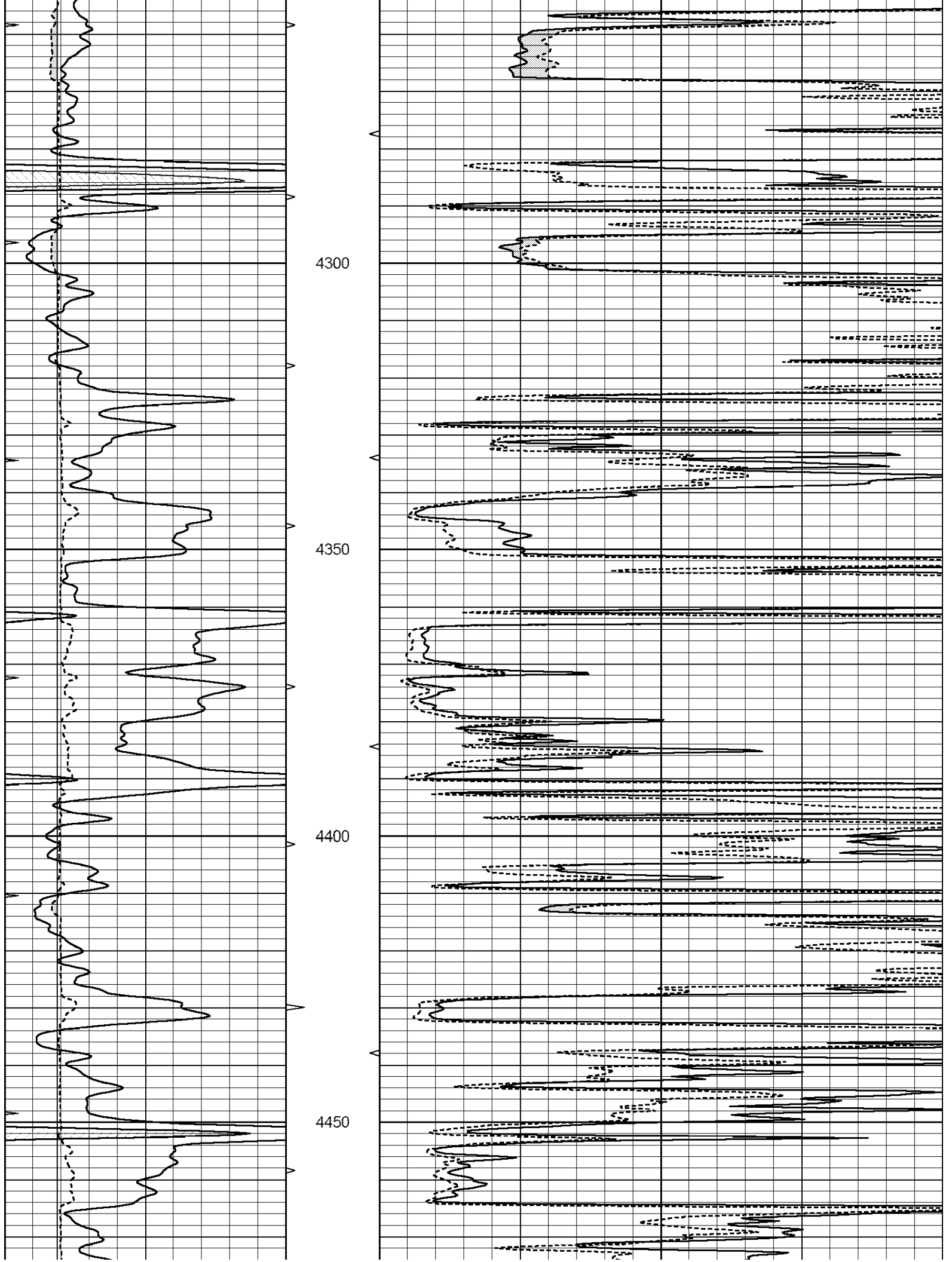
0	GAMMA RAY (GAPI)	150	ABHV	0	MEL1.5 (Ohm-m)	40
6	CALIPER (in)	16	10 (ft3)	0 0	MEL2.0 (Ohm-m)	40
0	MINMK	20	TBHV			
			0 (ft3)	10		

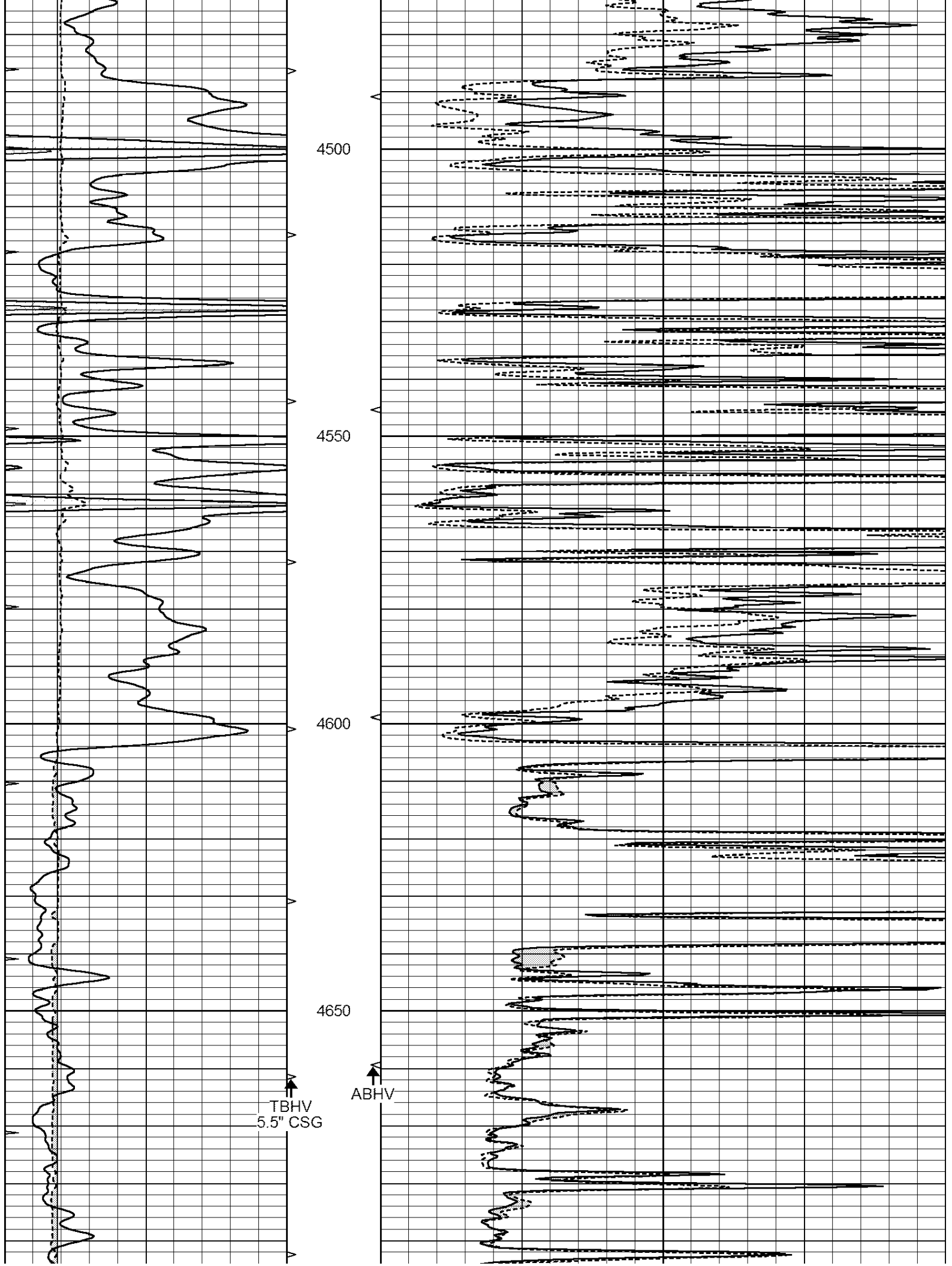


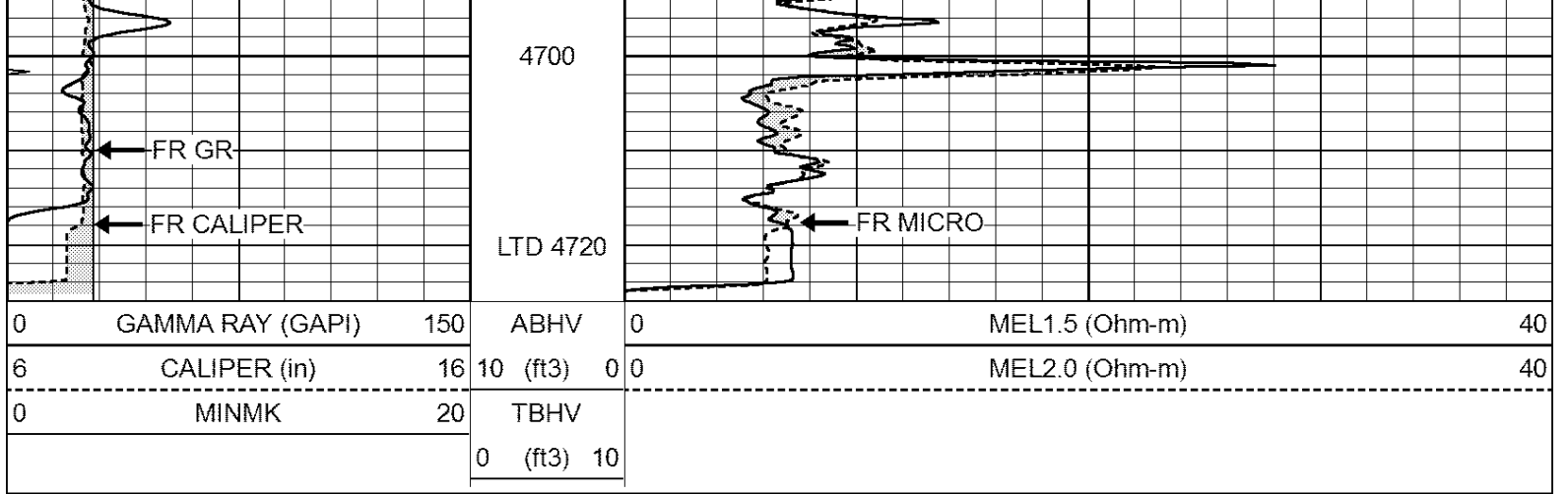








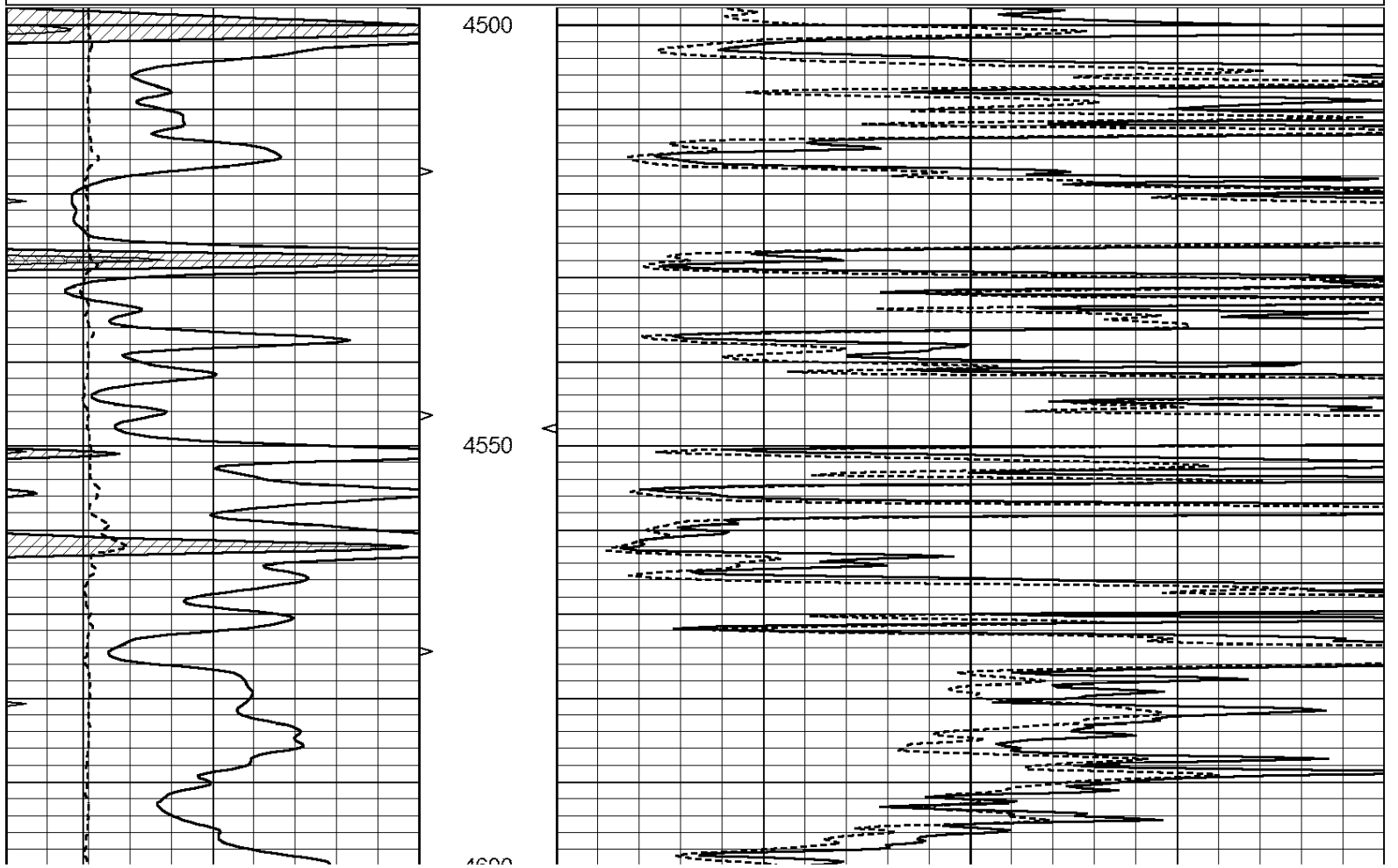


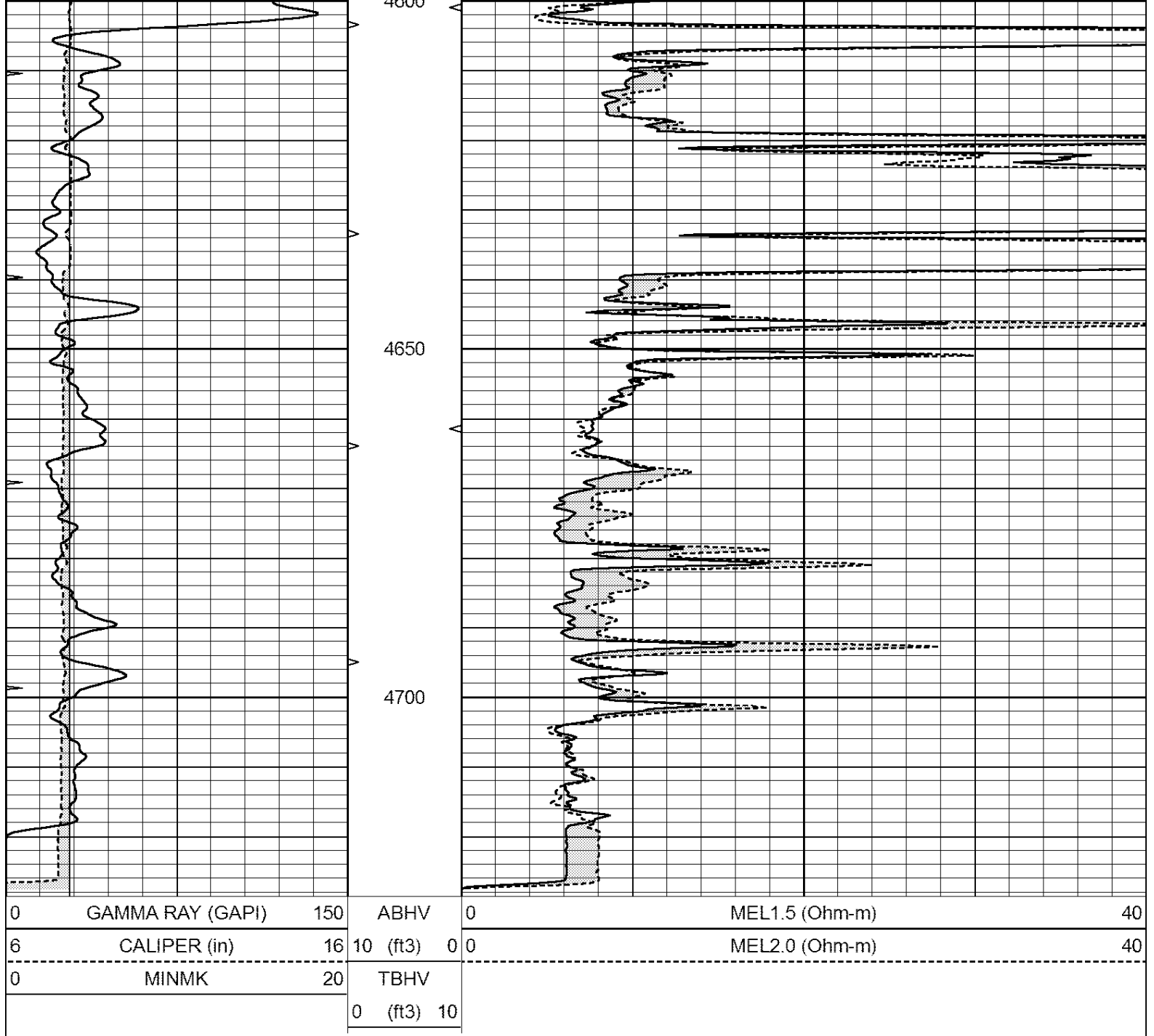


# REPEAT SECTION

Database File: 24634ddn.db  
 Dataset Pathname: pass6.1  
 Presentation Format: \_micro  
 Dataset Creation: Sun Jun 15 14:13:35 2014 by Calc Open-Cased 090629  
 Charted by: Depth in Feet scaled 1:240

0	GAMMA RAY (GAPI)	150	ABHV	0	MEL1.5 (Ohm-m)	40
6	CALIPER (in)	16	10 (ft3)	0 0	MEL2.0 (Ohm-m)	40
0	MINMK	20	TBHV			
			0 (ft3)	10		





### Calibration Report

Database File: 24634ddn.db  
 Dataset Pathname: pass8.1  
 Dataset Creation: Sun Jun 15 15:05:19 2014 by Calc Open-Cased 090629

### MICRO Calibration Report

Serial Number: MICRO6  
 Tool Model: PROBE  
 Performed: Fri May 23 07:29:07 2014

Caliper Calibration: Gain=5.542      Offset=-0.220

References	Low Cal	High Cal
Readings	8.000	14.000
	1.431	2.513

1.5" Calibration: Gain=38.075      Offset=0.000

Low Cal	High Cal
---------	----------

References	0.000	20.000
Readings	0.004	1.196

2" Calibration:	Gain=44.000	Offset=-0.600
-----------------	-------------	---------------

	Low Cal	High Cal
References	0.000	20.000
Readings	0.006	0.913

Gamma Ray Calibration Report

Serial Number:	GR6	
Tool Model:	OPEN	
Performed:	Sat May 31 01:22:06 2014	

Calibrator Value:	150.0	GAPI
-------------------	-------	------

Background Reading:	0.0	cps
Calibrator Reading:	276.0	cps

Sensitivity:	0.7535	GAPI/cps
--------------	--------	----------