



**ORNISH**  
WIRELINE  
SERVICES, INC.  
CHANUTE, KANSAS

**GAMMA RAY  
NEUTRON  
COMPLETION LOG**

Company **N & W ENTERPRISES, INC.**  
Well **GIEFER #INJ 14**  
Field **WALNUT SE**  
County **CRAWFORD**  
State **KANSAS**

Company **N & W ENTERPRISES, INC.**  
Well **GIEFER #INJ 14**  
Field **WALNUT SE**  
County **CRAWFORD** State **KANSAS**

Location: **API # : 15-037-22270-00-00**  
**1650 FSL & 4290 FEL**  
**SE NW SW**  
**SEC 34 TWP 28S RGE 22E**

Permanent Datum	GL	Elevation	975EST.
Log Measured From	GL	K.B.	D.F.
Drilling Measured From	GL	G.L.	975EST.

Date	6-6-14		
Run Number	1 NW		
Depth Driller	420'		
Depth Logger	410.5'		
Top Log Interval	0		
Bottom Logged Interval	410.5'		
Fluid Level	FULL		
Type Fluid	WATER		
Production Casing	2 7/8" @ TD	@	@
Max. Recorded Temp.			
Estimated Cement Top			
Calculated Cement Top			
Amount & Type Cement			
Amount & Type Admix			
Drilling Contractor			
Equipment Number	103		
Location			
Recorded By	SOLOMON, B.		
Witnessed By	NORRIS, T.		

<<< Fold Here >>>

All interpretations are opinions based on inferences from electrical or other measurements and we cannot and do not guarantee the accuracy or correctness of any interpretation, and we shall not, except in the case of gross or willful negligence on our part, be liable or responsible for any loss, costs, damages, or expenses incurred or sustained by anyone resulting from any interpretation made by any of our officers, agents or employees. These interpretations are also subject to our general terms and conditions set out in our current Price Schedule.

**Comments**

**THANK YOU**

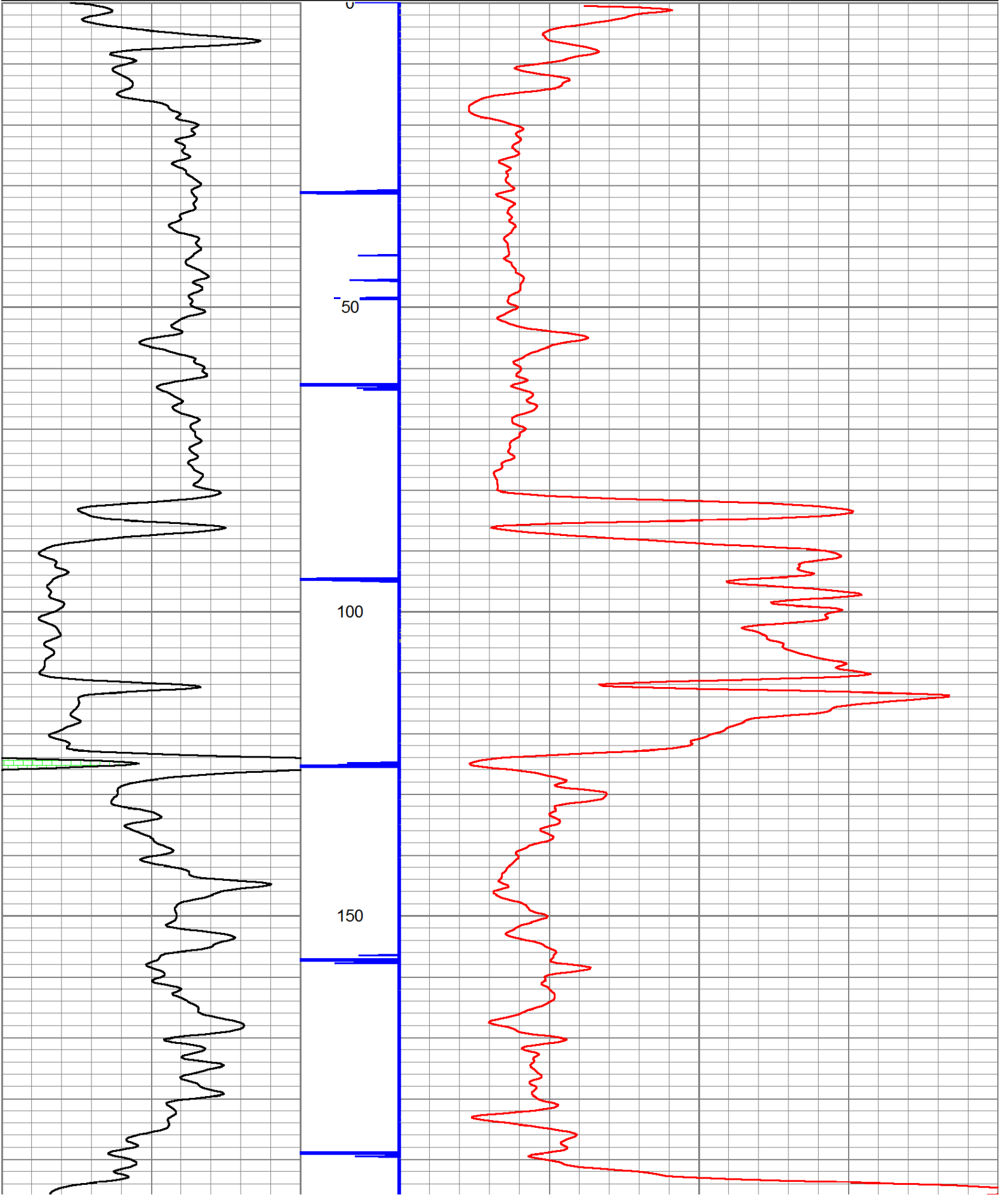
Sensor	Offset (ft)	Schematic	Description	Len (ft)	OD (in)	Wt (lb)

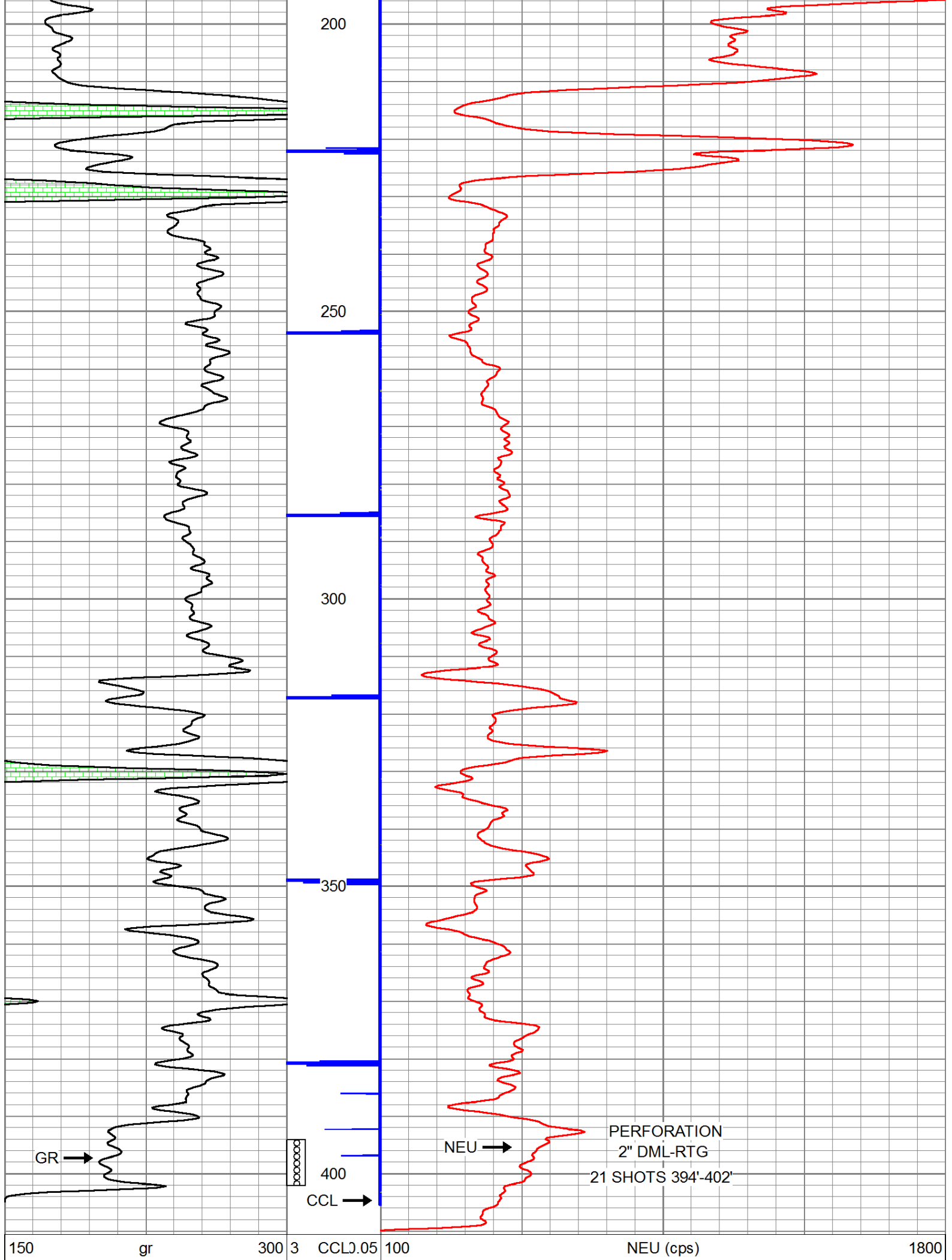
GR	7.59		GR-TITAN_169 (TIT169_001) Titan 1 11/16" Gamma Ray	4.75	1.69	20.00
CCL	5.05		CCL-TITAN_169 (TIT169) Titan 1 11/16" Logging CCL	1.83	1.69	7.50
NEU	0.63		NEU-TITAN (TIT801) TITAN 1 11/16" Neutron	4.33	1.69	25.00

Dataset: giefer #inj 14.db: field/well/run1/pass1  
 Total Length: 10.92 ft  
 Total Weight: 52.50 lb  
 O.D.: 1.69 in

Database File: e:\giefer #inj 14.db  
 Dataset Pathname: pass1  
 Presentation Format: gr-n-ccl

150	gr	300	3	CCLJ.05	100	NEU (cps)	1800
0	GR	150					







Company	N & W ENTERPRISES, INC.		
Well	GIEFER #INJ 14		
Field	WALNUT SE		
County	CRAWFORD	SEC. 34	TWP. 28S RGE. 22E
State	KANSAS	Date	6-6-14